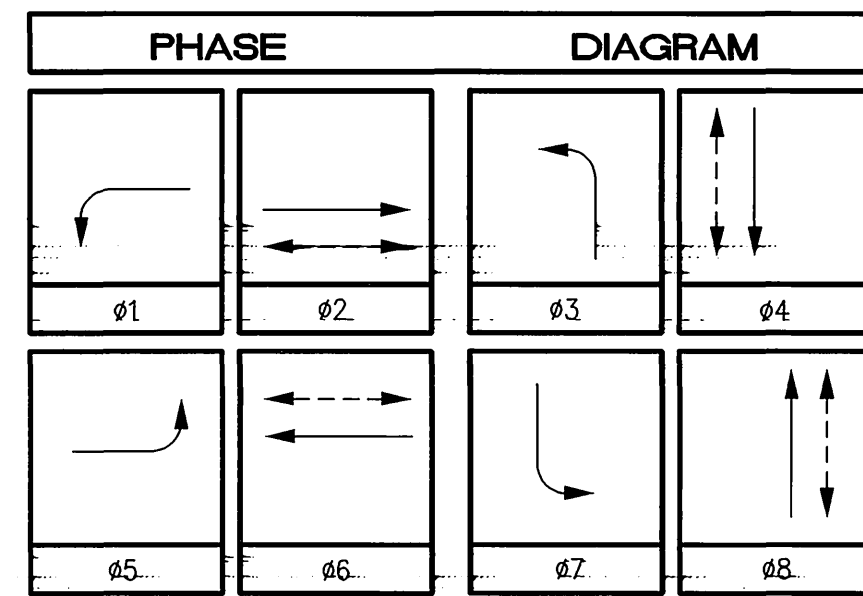


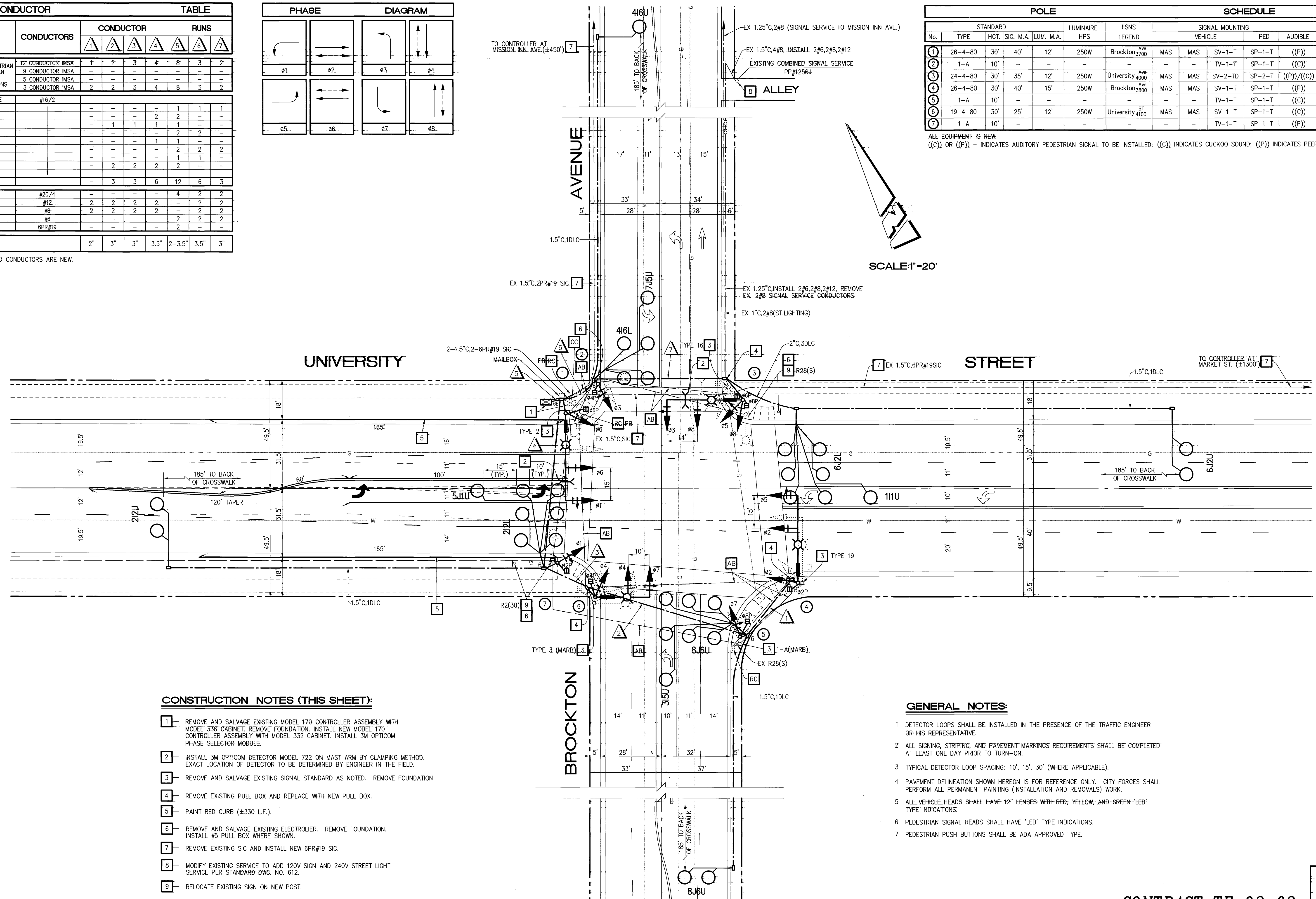
CONDUCTOR		TABLE						
CONTROL FUNCTION	CONDUCTORS	CONDUCTOR RUNS						
		1	2	3	4	5	6	7
VEHICLE & PEDESTRIAN HEADS, PEDESTRIAN PUSH BUTTONS, SPARES & COMMONS	12 CONDUCTOR IMSA	1	2	3	4	8	3	2
	9 CONDUCTOR IMSA	-	-	-	-	-	-	-
	5 CONDUCTOR IMSA	-	-	-	-	-	-	-
	3 CONDUCTOR IMSA	2	2	3	4	8	3	2
DETECTOR CABLE	#16/2	-	-	-	-	1	1	1
PHASE 1		-	-	-	2	2	-	-
PHASE 2		-	1	1	1	1	-	-
PHASE 3		-	-	-	-	2	2	-
PHASE 4		-	-	-	-	2	2	-
PHASE 5		-	-	-	1	1	-	-
PHASE 6		-	-	-	-	2	2	2
PHASE 7		-	-	-	-	1	1	-
PHASE 8		-	2	2	2	2	-	-
TOTALS		-	3	3	6	12	6	3
EVPE CABLE	#20/4	-	-	-	-	4	2	2
USNS	#12	2	2	2	2	-	2	2
LUMINAIRES	#8	2	2	2	2	-	2	2
SIGNAL SERVICE	#6	-	-	-	-	2	2	2
INTERCONNECT	6PR#19	-	-	-	-	2	-	-
CONDUIT SIZE		2"	3"	3"	3.5"	2-3.5"	3.5"	3"

ALL CONDUIT AND CONDUCTORS ARE NEW.



POLE		SCHEDULE										
No.	TYPE	STANDARD		LUMINAIRE HPS	IISNS LEGEND	SIGNAL MOUNTING				PPB PHASE	REMARKS	
		HGT.	SIG. M.A.			LUM. M.A.	VEHICLE	PED	AUDIBLE			
1	26-4-80	30'	40'	12'	250W	Brockton 3700	MAS	MAS	SV-1-T	SP-1-T	((P))	Ø4
2	1-A	10'	-	-	-	-	-	-	TV-1-T	SP-1-T	((C))	Ø6
3	24-4-80	30'	35'	12'	250W	University Ave 4000	MAS	MAS	SV-2-TD	SP-2-T	((P))/((C))	Ø6/Ø8
4	26-4-80	30'	40'	15'	250W	Brockton Ave 3800	MAS	MAS	SV-1-T	SP-1-T	((P))	Ø2/Ø8
5	1-A	10'	-	-	-	-	-	-	TV-1-T	SP-1-T	((C))	-
6	19-4-80	30'	25'	12'	250W	University 4100	MAS	MAS	SV-1-T	SP-1-T	((C))	Ø2
7	1-A	10'	-	-	-	-	-	-	TV-1-T	SP-1-T	((P))	Ø4

ALL EQUIPMENT IS NEW.
((C)) OR ((P)) - INDICATES AUDITORY PEDESTRIAN SIGNAL TO BE INSTALLED; ((C)) INDICATES CUCKOO SOUND; ((P)) INDICATES PEEP-PEEP SOUND.

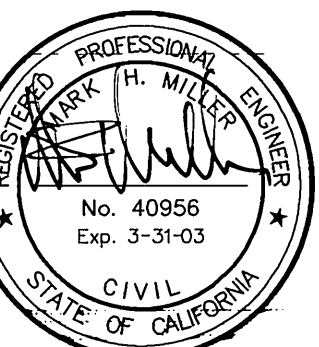


CONSTRUCTION NOTES (THIS SHEET):

- REMOVE AND SALVAGE EXISTING MODEL 170 CONTROLLER ASSEMBLY WITH MODEL 336 CABINET. REMOVE FOUNDATION. INSTALL NEW MODEL 170 CONTROLLER ASSEMBLY WITH MODEL 332 CABINET. INSTALL 3M OPTICOM PHASE SELECTOR MODULE.
- INSTALL 3M OPTICOM DETECTOR MODEL 722 ON MAST ARM BY CLAMPING METHOD. EXACT LOCATION OF DETECTOR TO BE DETERMINED BY ENGINEER IN THE FIELD.
- REMOVE AND SALVAGE EXISTING SIGNAL STANDARD AS NOTED. REMOVE FOUNDATION.
- REMOVE EXISTING PULL BOX AND REPLACE WITH NEW PULL BOX.
- PAINT RED CURB (±330 L.F.).
- REMOVE AND SALVAGE EXISTING ELECTROLIER. REMOVE FOUNDATION. INSTALL #5 PULL BOX WHERE SHOWN.
- REMOVE EXISTING SIC AND INSTALL NEW 6PR#19 SIC.
- MODIFY EXISTING SERVICE TO ADD 120V SIGN AND 240V STREET LIGHT SERVICE PER STANDARD DWG. NO. 612.
- RELOCATE EXISTING SIGN ON NEW POST.

GENERAL NOTES:

- DETECTOR LOOPS SHALL BE INSTALLED IN THE PRESENCE OF THE TRAFFIC ENGINEER OR HIS REPRESENTATIVE.
- ALL SIGNING, STRIPING, AND PAVEMENT MARKINGS REQUIREMENTS SHALL BE COMPLETED AT LEAST ONE DAY PRIOR TO TURN-ON.
- TYPICAL DETECTOR LOOP SPACING: 10', 15', 30' (WHERE APPLICABLE).
- PAVEMENT DELINEATION SHOWN HEREON IS FOR REFERENCE ONLY. CITY FORCES SHALL PERFORM ALL PERMANENT PAINTING (INSTALLATION AND REMOVALS) WORK.
- ALL VEHICLE HEADS SHALL HAVE 12" LENSES WITH RED, YELLOW, AND GREEN 'LED' TYPE INDICATIONS.
- PEDESTRIAN SIGNAL HEADS SHALL HAVE 'LED' TYPE INDICATIONS.
- PEDESTRIAN PUSH BUTTONS SHALL BE ADA APPROVED TYPE.



TRAFFIC No. 1575-
DATE: 10-1-02
AGA Job No.: 134-005
AGA File Name: UNIBROMD
Print Date: 10/1/02
Last Revision: 10/1/02

ALBERT GROVER & ASSOCIATES
TRANSPORTATION CONSULTING ENGINEERS
211 E. Imperial Hwy., Suite 208 Fullerton, CA 92835

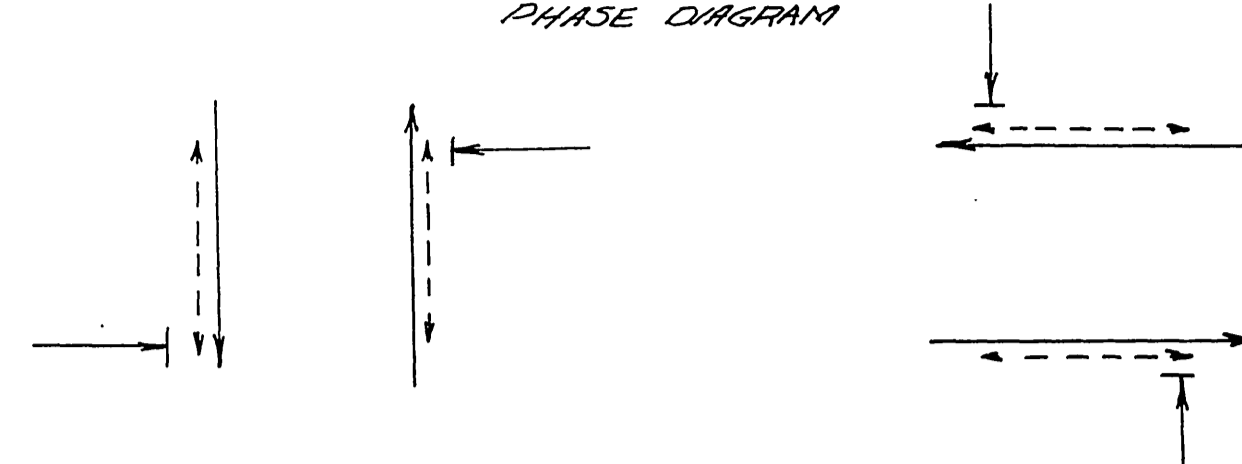
CONTRACT TE-02-03

Underground Service Alert
Call TOLL FREE
1-800-227-2600
TWO WORKING DAYS BEFORE YOU DIG

CITY OF RIVERSIDE, CALIFORNIA DEPARTMENT OF PUBLIC WORKS		TRAFFIC SIGNAL PLAN		ACCOUNT NO.
APPROVED BY	DATE	BY	DATE	X-137A SHEET 3 OF 9
PRINCIPAL ENGINEER		APPROVED BY		
INSPECTION	10/7/02	Public Works Director	10/1/02	
TRAFFIC DIVISION		CHIEF P. W. ENGINEER		
MARK	REVISIONS	APPR.	DATE	
DESIGNED BY	DRAWN BY	CHECKED BY	DATE	

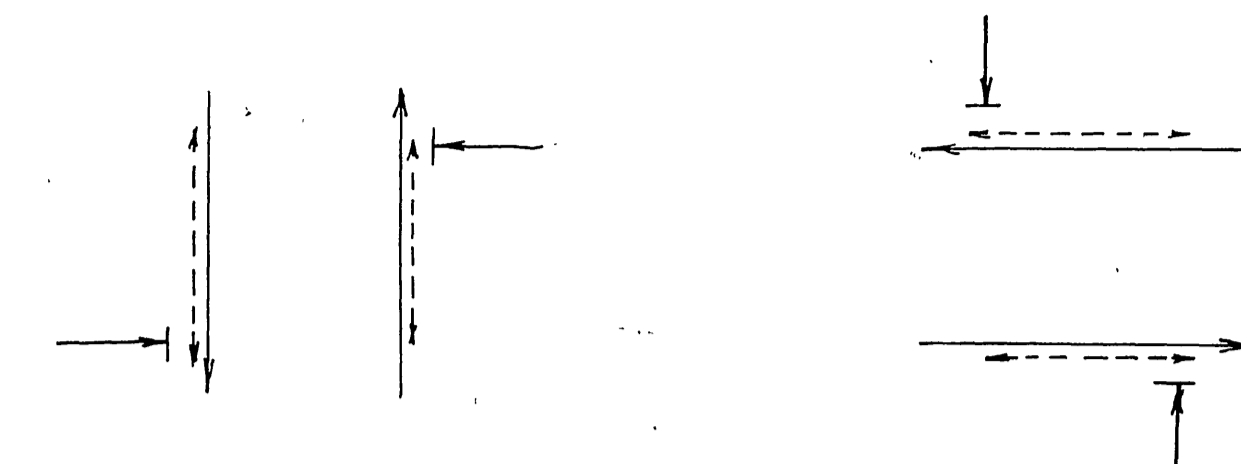
HORIZ. SCALE: 1" = 20' VERT. SCALE: 1" = -

PHASE DIAGRAM

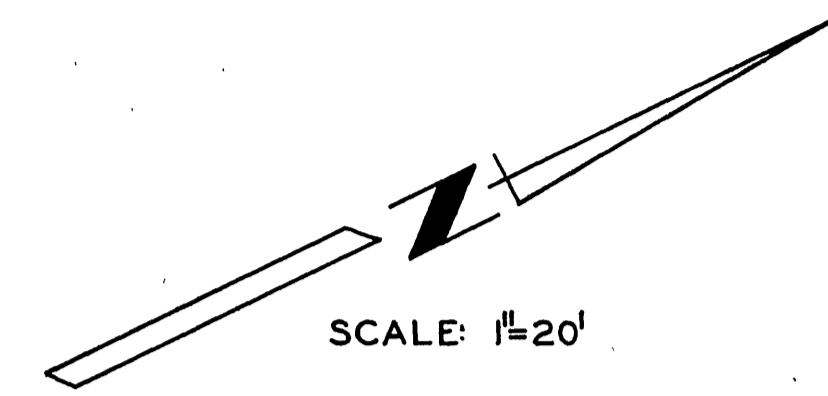


Flashing Indications: ϕA - Yellow ; ϕB - Red

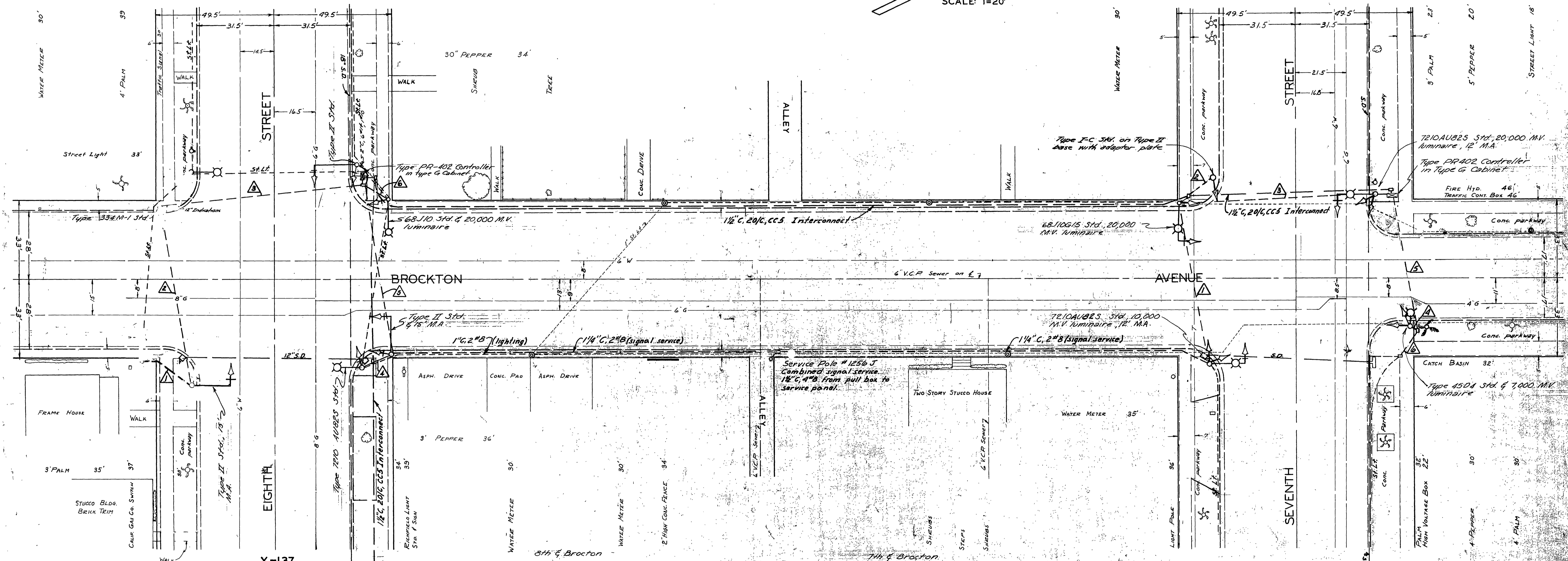
PHASE DIAGRAM



Flashing Indications: ϕA - Yellow ; ϕB - Red



SCALE: 1"=20'



X-137

X-136

FB T 4 / 2, 8

CONDUCTOR SCHEDULE

CONDUCTOR RUN	A				B				C				D			
	8	10	12	14	8	10	12	14	8	10	12	14	8	10	12	14
ϕA	3				3				3				3			
ϕB			3				3				3				3	
ϕA Ped. (omit)				1				1				1				1
110v Neutral	1				1				1				1			
Spares		3				1				3				3		
Signal Service									2							
Total Conductors	1	6		5	5	1	6	2	10	7	10	7	5	10	7	5
Conduit Size	1 1/2"				1 1/2"				1 1/2"				1 1/2"			

CONDUCTOR SCHEDULE

CONDUCTOR RUN	A				B				C				D			
	8	10	12	14	8	10	12	14	8	10	12	14	8	10	12	14
ϕA	3				3				3				3			
ϕB			3				3				3				3	
ϕA Ped. (omit)				1				1				1				1
110v Neutral	1				1				1				1			
Spares		3				1				3				3		
Signal Service									2							
Lighting													2			
Total Conductors	5	10		7	7	6	5	10	2	8	10	7	5	10	7	5
Conduit Size	1 1/2"				1 1/2"				1 1/2"				1 1/2"			

REVISIONS			CITY OF RIVERSIDE, CALIFORNIA DEPARTMENT OF PUBLIC WORKS
MARK	DATE	DESCRIPTION	
16	1/3	As Built	TRAFFIC SIGNALS BROCKTON AVE 7TH & 8TH STREETS
12	1/2	Revised 5th & 7th Way	
15	1/3	As Built 2 Way	

DESIGNED BY	CHECKED BY	APPROVED BY	X-136
DRAWN BY ADD		DIRECTOR OF PUBLIC WORKS	X-137
RECOMMENDED BY	ASSISTANT CITY ENGINEER	DATE	SHEET OF 2