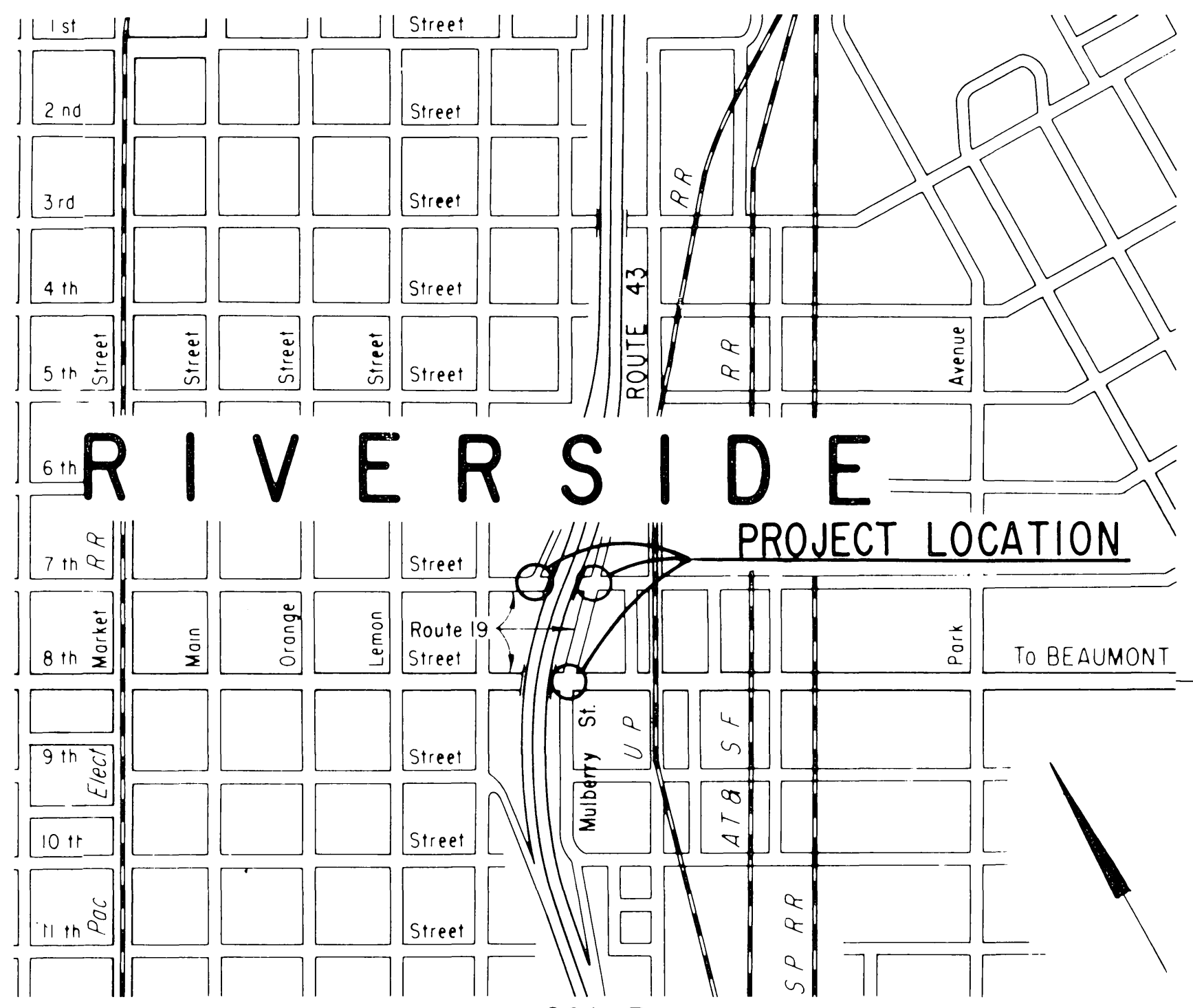


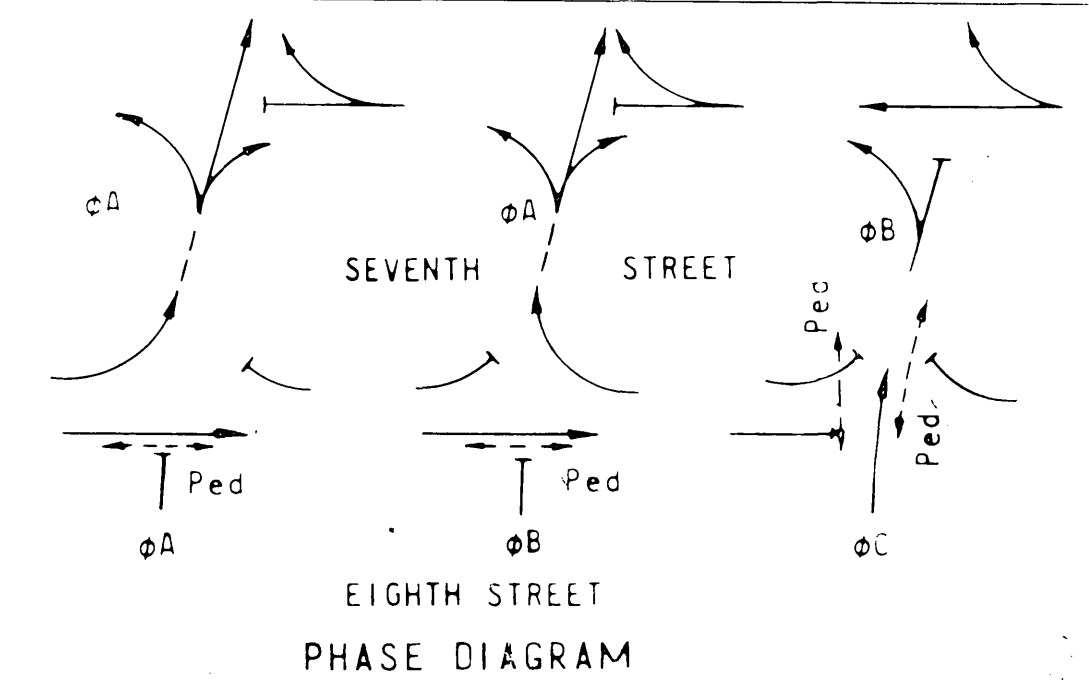
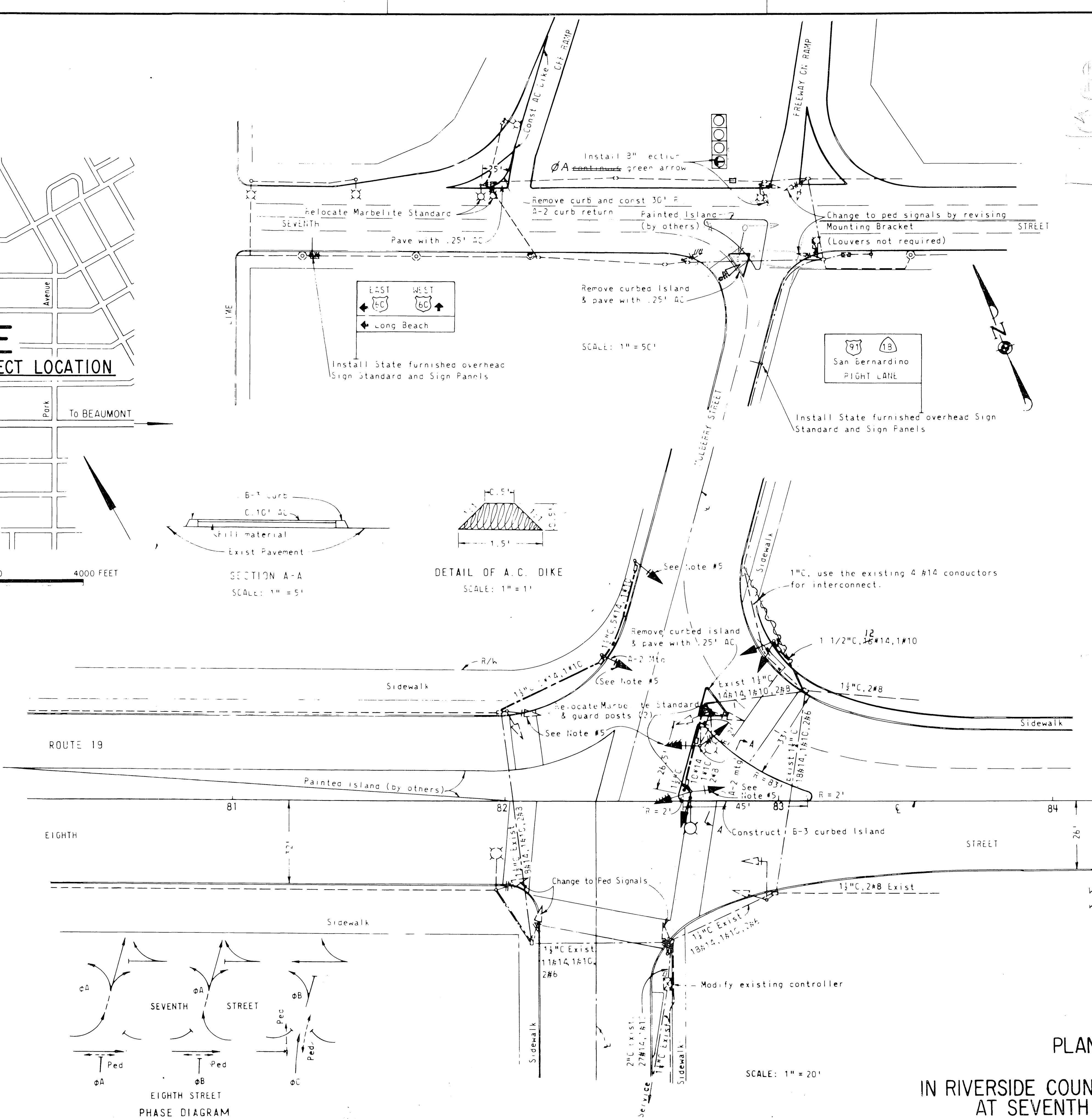
DIST.	STATE	FEDERAL PROJECT NO.	YEAR	NO.	SHEETS
VIII	Calif.	19	Riv	1	5

APPROVED: *[Signature]* DISTRICT ENGINEER DIST. VIII  
 October 19, 1960

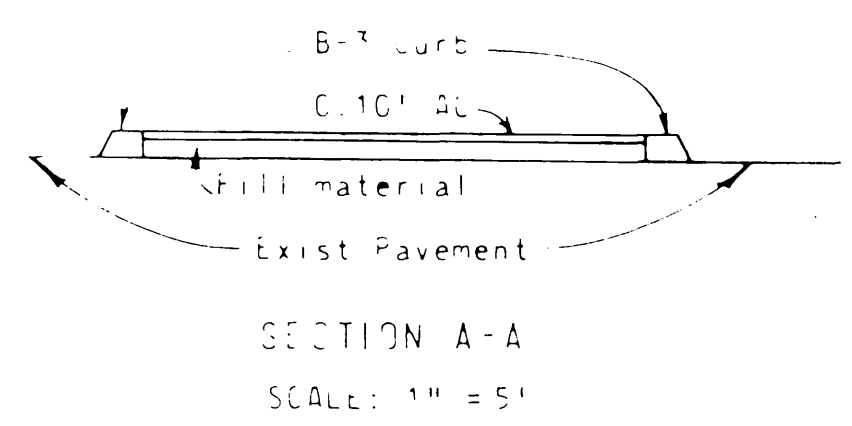


LOCATION MAP

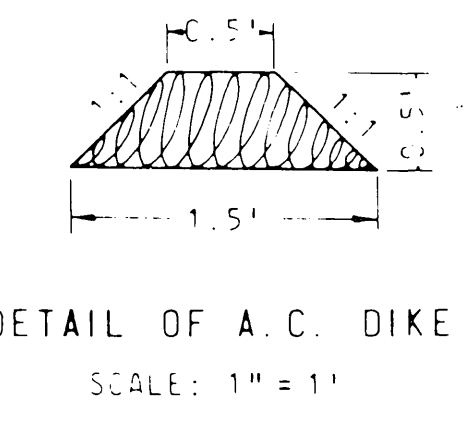
- NOTES:
1. Painting of all pavement markings will be performed by others.
  2. Conductors indicated represent the total number required. Existing conductors may be reused when approved by the Engineer.
  3. Use spare conductors at Seventh Street and Mulberry for green arrow indication.
  4. Existing Signals changed to provide two light pedestrian indications shall be reinstalled at the present ten foot mounting height.
  5. Install eight inch green arrow lens.
  6. Salvaged signal sections shall be reused.



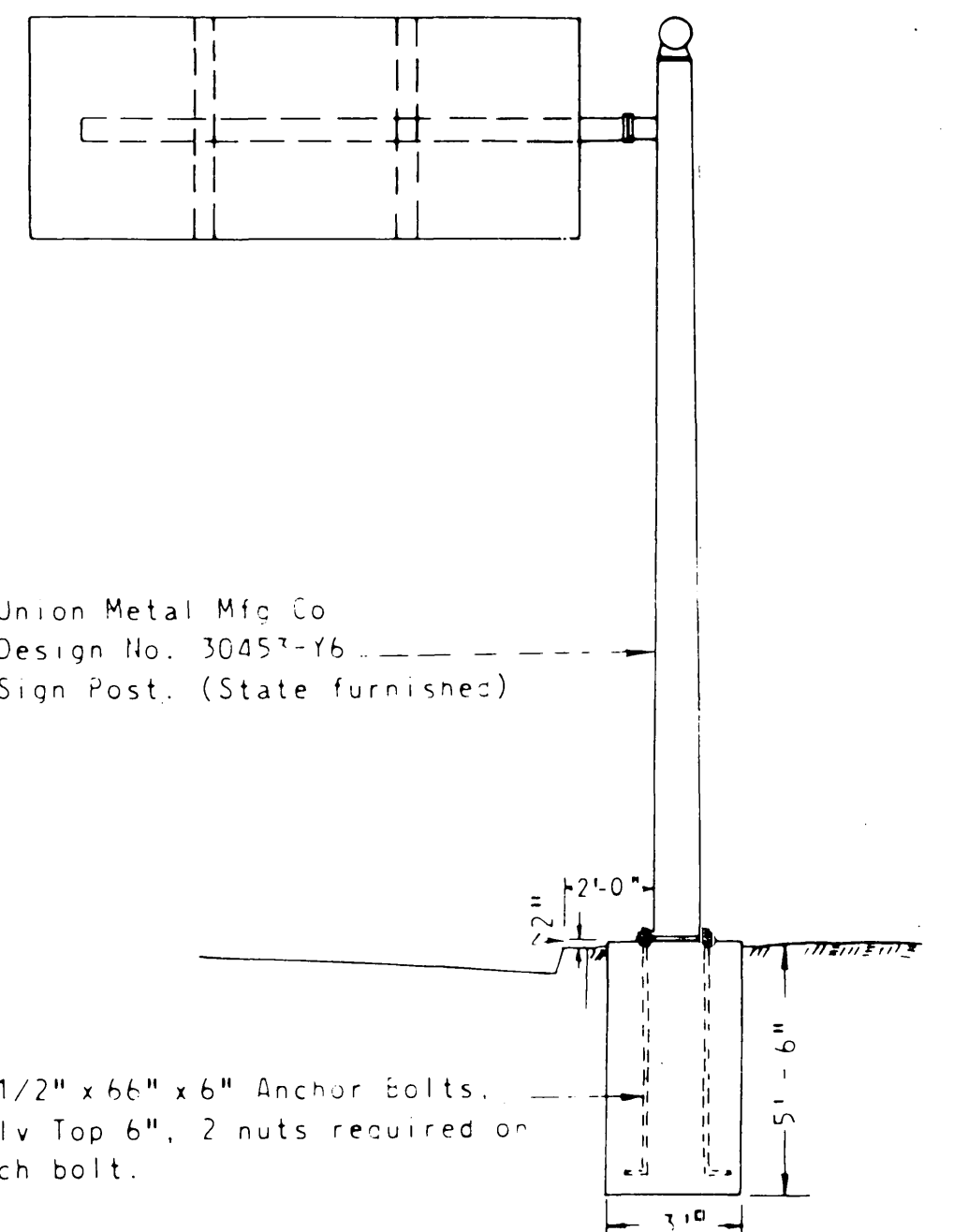
PHASE DIAGRAM



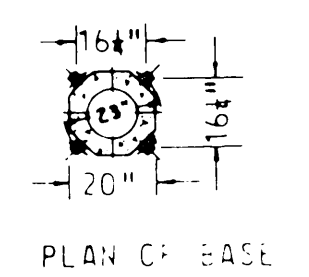
SECTION A-A  
SCALE: 1" = 5'



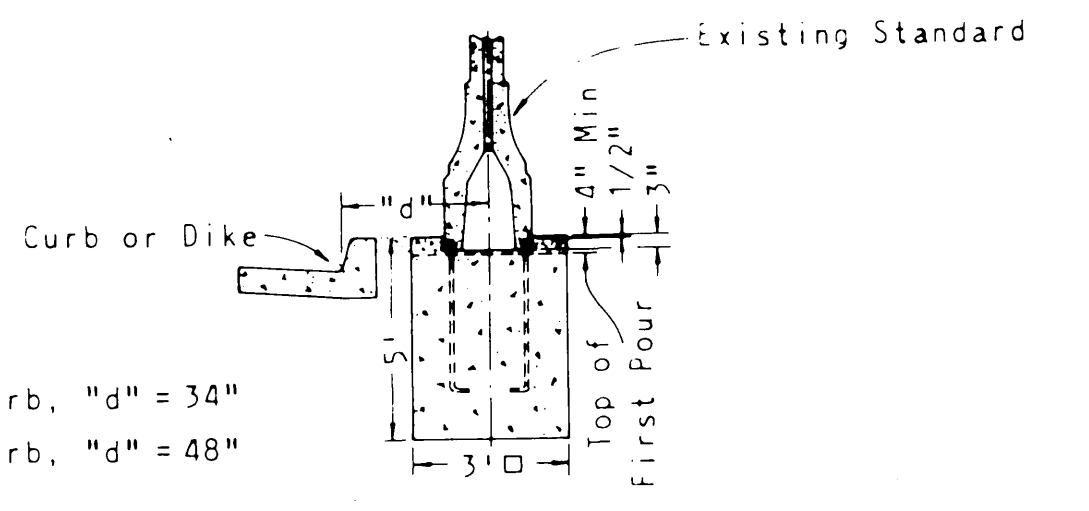
DETAIL OF A.C. DIKE  
SCALE: 1" = 1'



OVERHEAD SIGN STANDARD  
SCALE: 1" = 4'



PLAN OF BASE



FOUNDATION DETAILS  
NO SCALE

STATE OF CALIFORNIA  
 DEPARTMENT OF PUBLIC WORKS  
 DIVISION OF HIGHWAYS

PLANS FOR CONSTRUCTION ON  
 STATE HIGHWAY  
 IN RIVERSIDE COUNTY IN RIVERSIDE ON MULBERRY STREET  
 AT SEVENTH STREET AND AT EIGHTH STREET

Project Engineer	Date	Design Engineer	Date	Approval Recommended By	Date
<i>[Signature]</i>		<i>[Signature]</i>		<i>[Signature]</i>	9.60

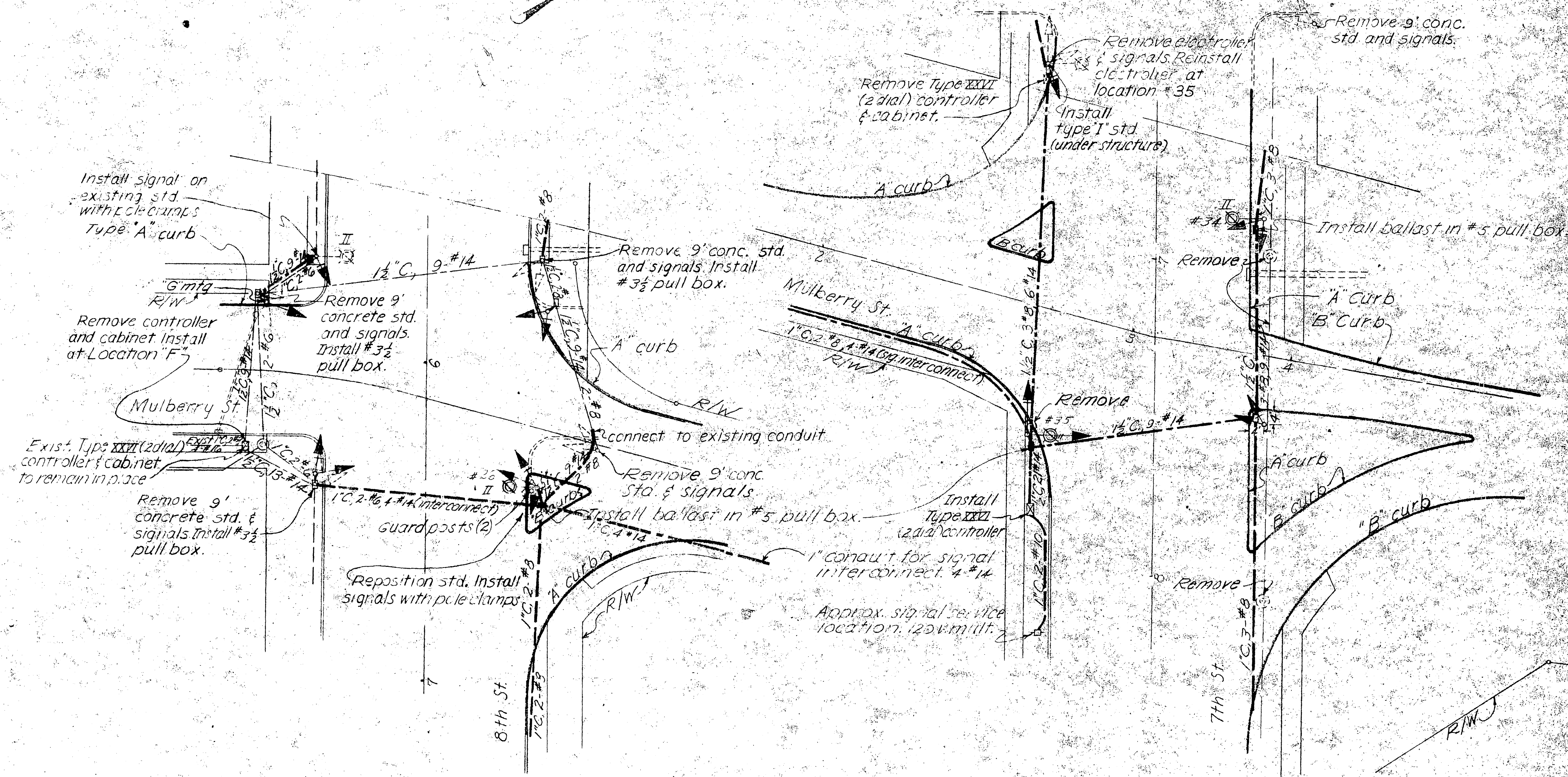
X-142-193



FEDERAL PROJECT NO. U-0269(1)  
 STATE CALIF.  
 DIVISION 7  
 SHEET 49  
 TOTAL SHEETS 160  
 August 1, 1955  
 Traffic Engineer  
 Civil Engineer License No. 5429

Remove electroler & signals. Reinstall electroler at location #34  
 Remove 9' conc. std. and signals  
 Existing Mulberry St. intersection

- Notes: Locations 'G' and 'I'
1. Remove and salvage signals and 9' concrete standards. Reinstall at locations on Lime St. as required.
  2. Reposition lighting standards as shown.
  3. All signals, mounting brackets, type 'I' standards, and wiring at locations 'G' & 'I' shall be new.



8th St & MULBERRY  
 LOCATION "G"

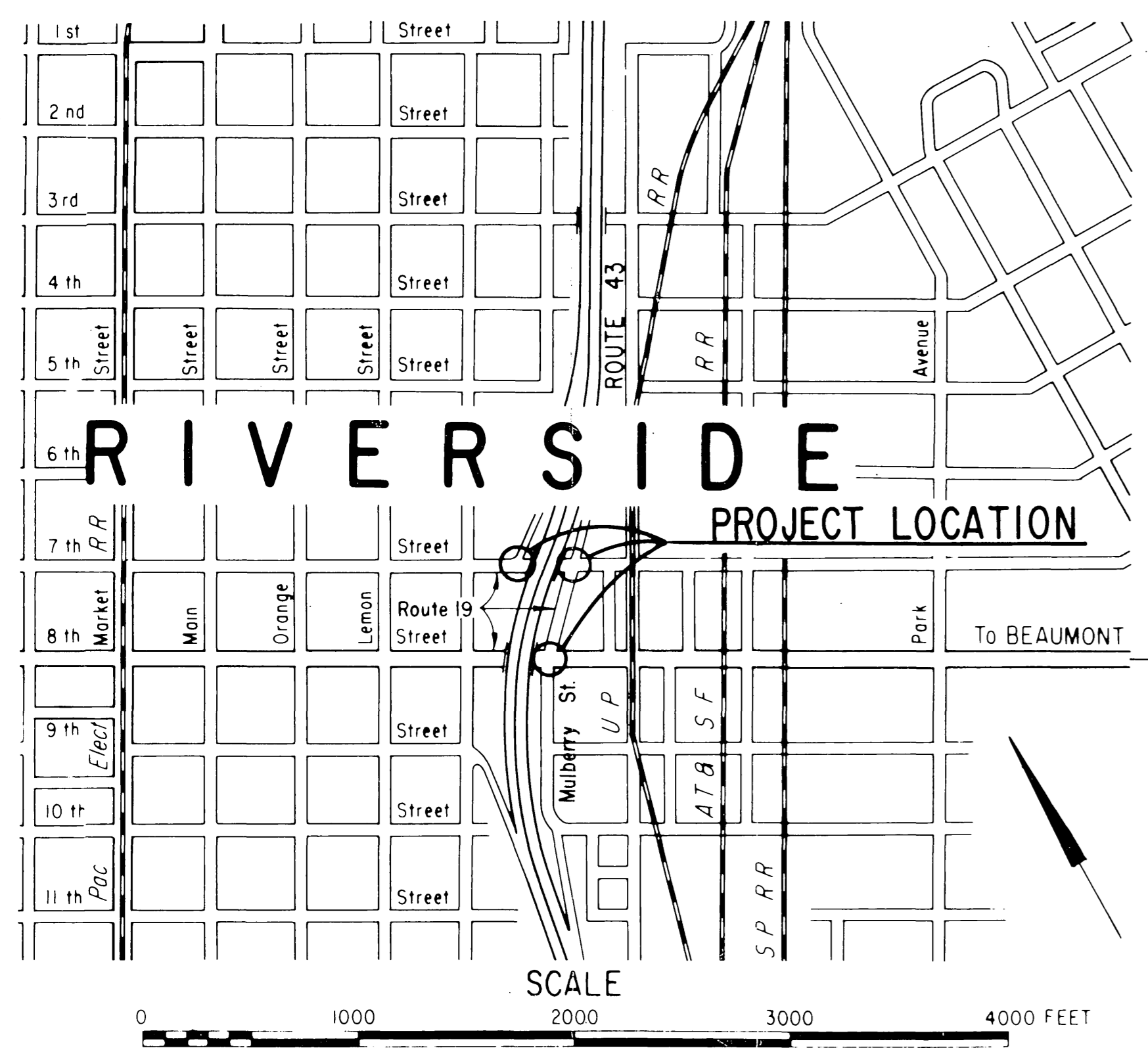
AS BUILT  
 CORRECTIONS BY J. McDonald  
 DATE 9/30/57  
 7th St. & MULBERRY  
 LOCATION "I"

For legend see SPECIAL DETAILS sheet  
 SIGNAL PLAN  
 Scale: 1"=20'

R.P.D. No.	STATE	FEDERAL PROJECT NO.	FISCAL YEAR	SHEET NO.	TOTAL SHEETS
	CALIF.				
DIST.	COUNTY	ROUTE	SECTION	SHEET NO.	TOTAL SHEETS
VIII	Riv	19	Riv	1	5

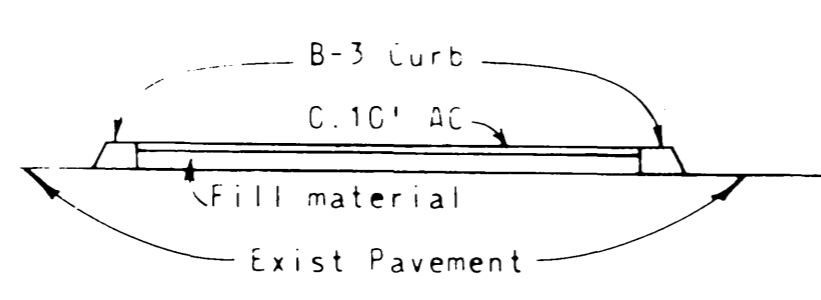
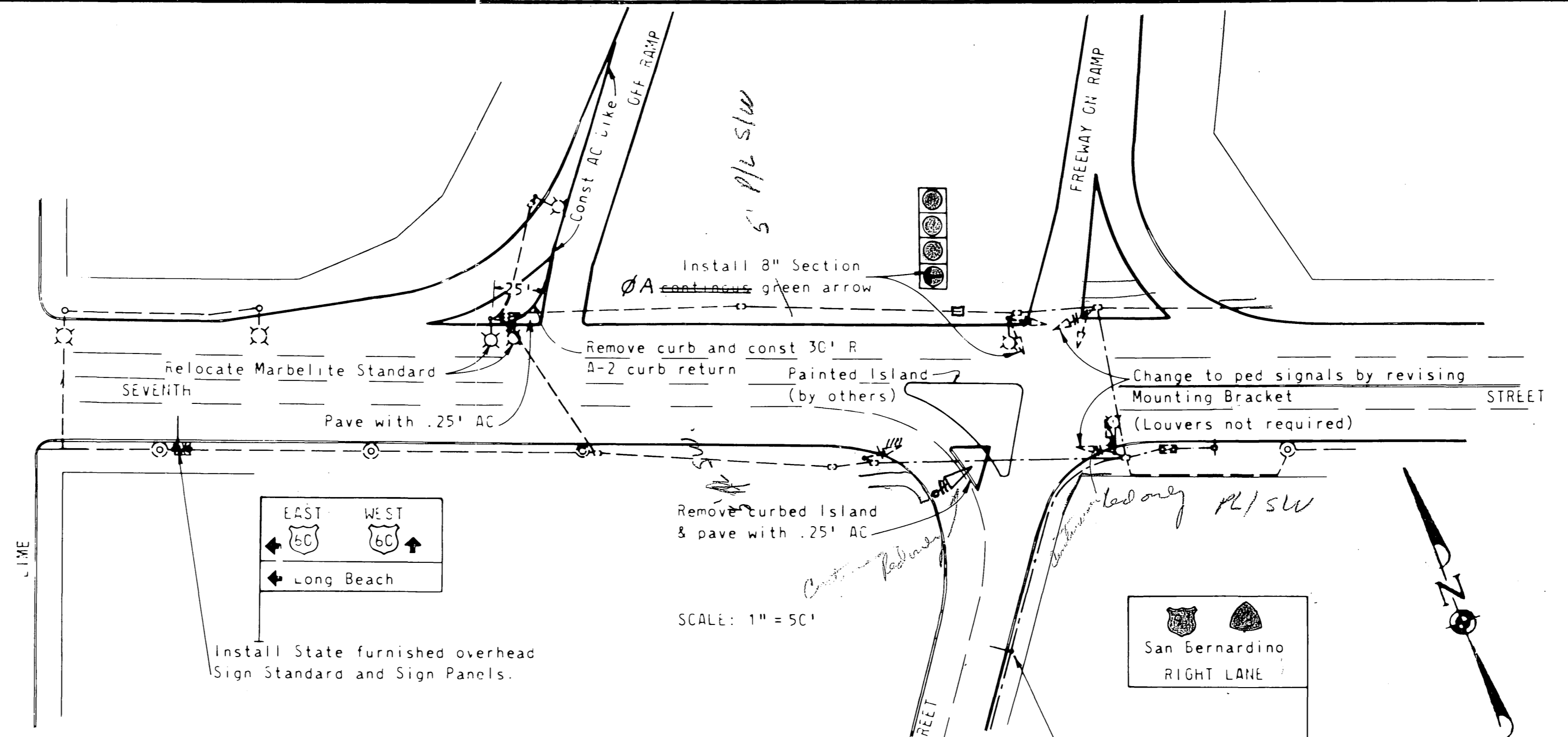
*C. W. H. ...*  
 DISTRICT ENGINEER  
 DIST. VIII  
 APPROVED: *[Signature]*  
 October 19, 1960  
 ENGINEER LICENSE NO. 5474

INDEX OF SHEETS  
 Sheet No. 1 Location Map, Plan, Details  
 " " 2-5 Standard Plans

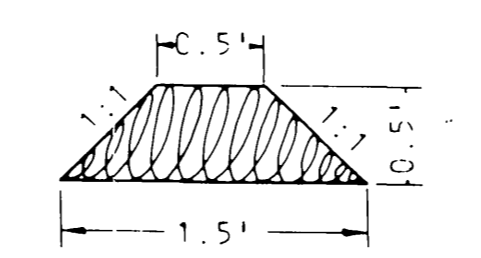


LOCATION MAP

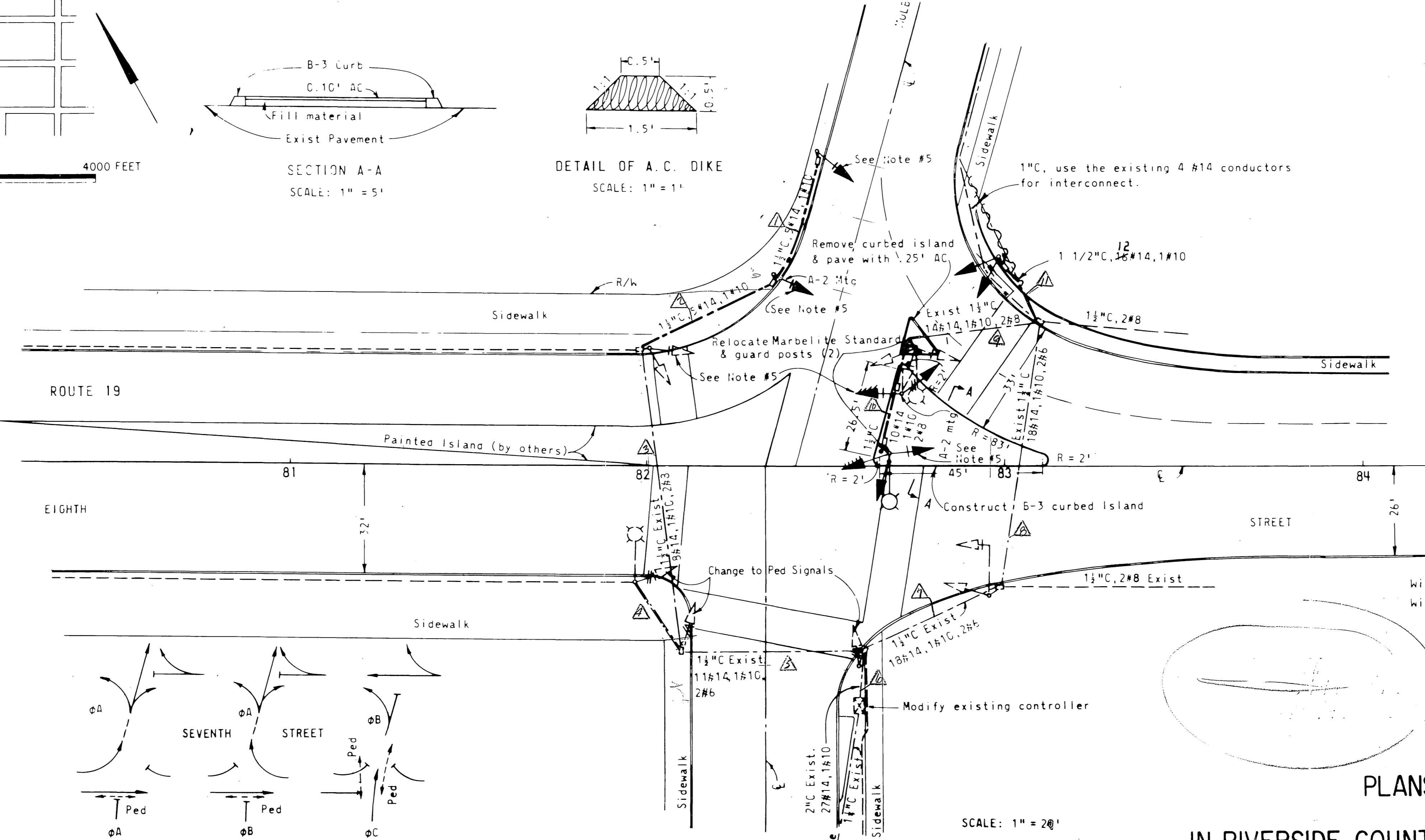
- NOTES:
1. Painting of all pavement markings will be performed by others.
  2. Conductors indicated represent the total number required. Existing conductors may be reused when approved by the Engineer.
  3. Use spare conductors at Seventh Street and Mulberry for green arrow indication.
  4. Existing Signals changed to provide two light pedestrian indications shall be reinstalled at the present ten foot mounting height.
  5. Install eight inch green arrow lens.
  6. Salvaged signal sections shall be reused.



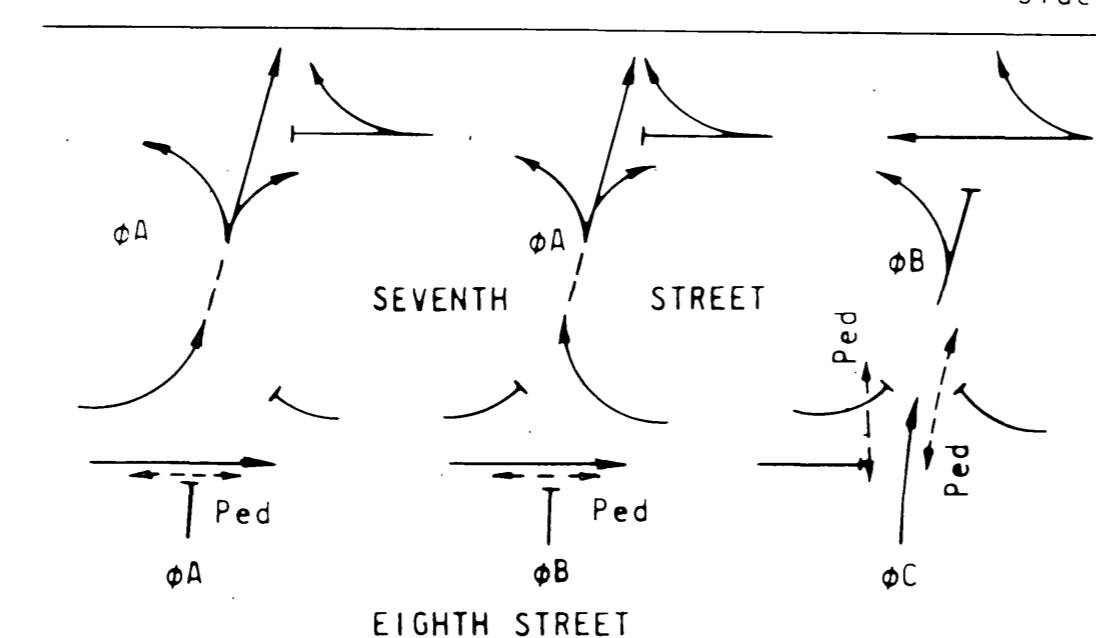
SECTION A-A  
SCALE: 1" = 5'



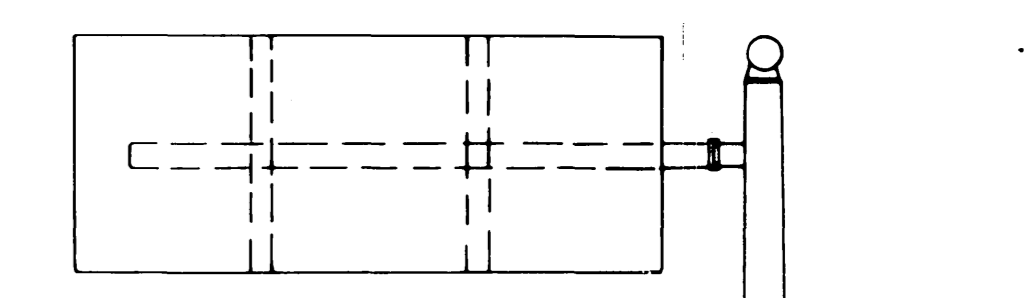
DETAIL OF A.C. DIKE  
SCALE: 1" = 1'



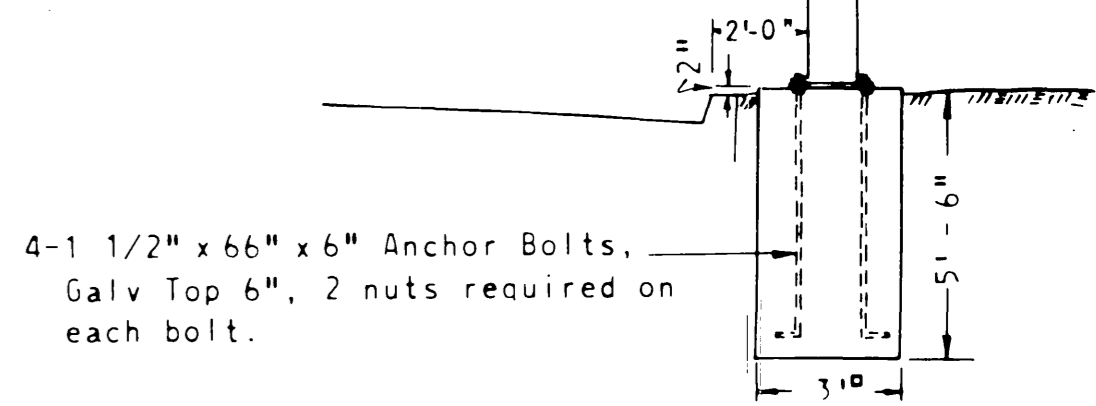
SCALE: 1" = 20'



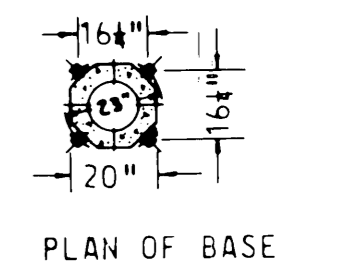
PHASE DIAGRAM



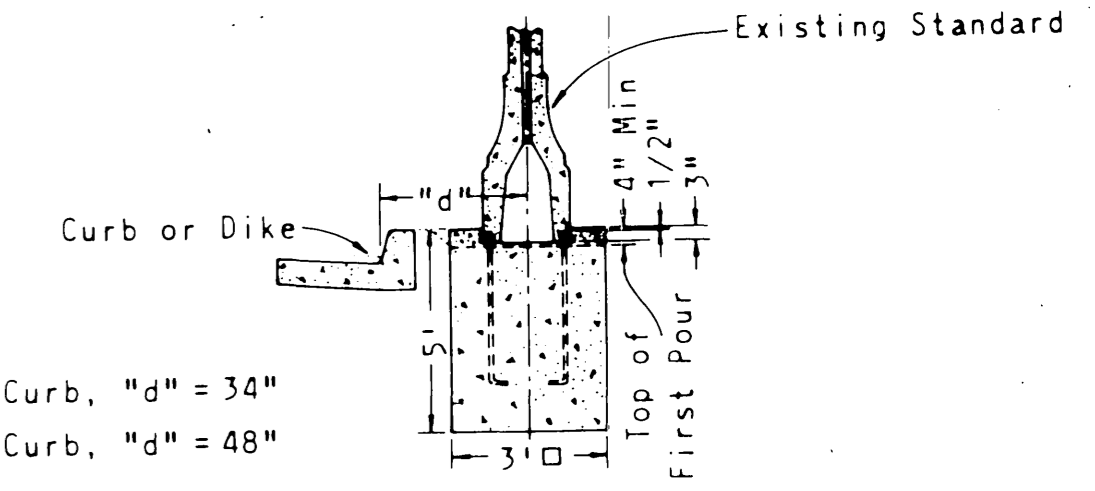
Union Metal Mfg Co  
 Design No. 30453-76  
 Sign Post. (State furnished)



OVERHEAD SIGN STANDARD  
SCALE: 1" = 4'



PLAN OF BASE

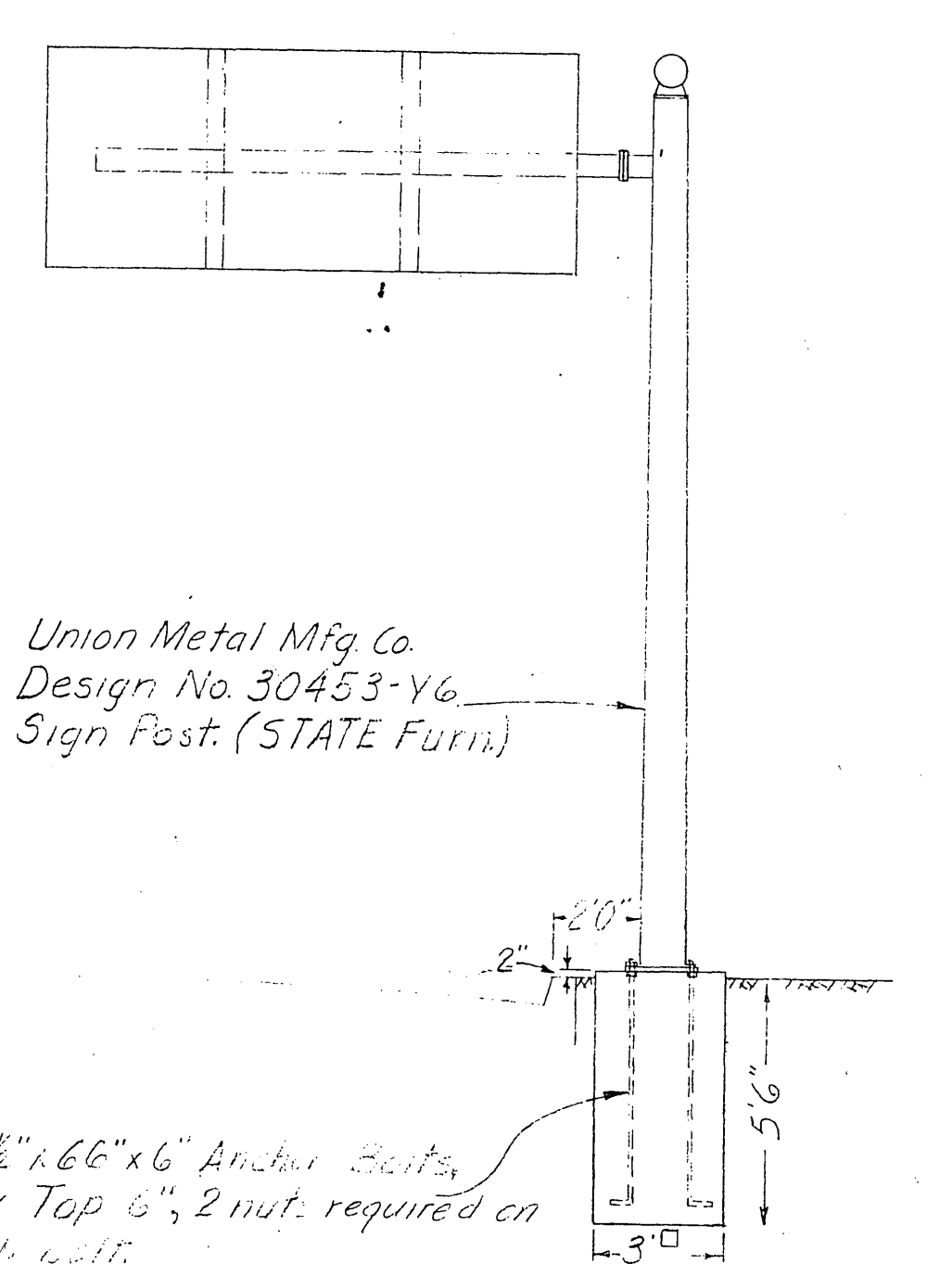


FOUNDATION DETAILS  
NO SCALE

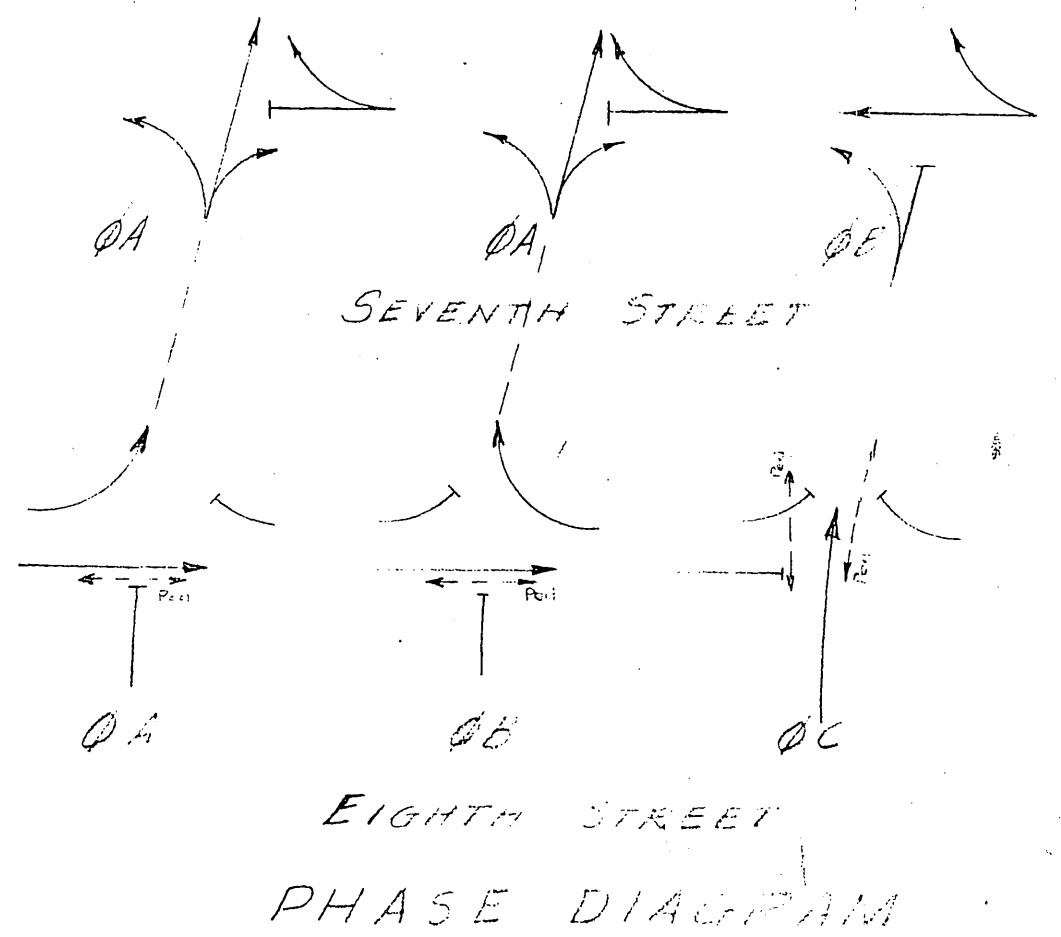
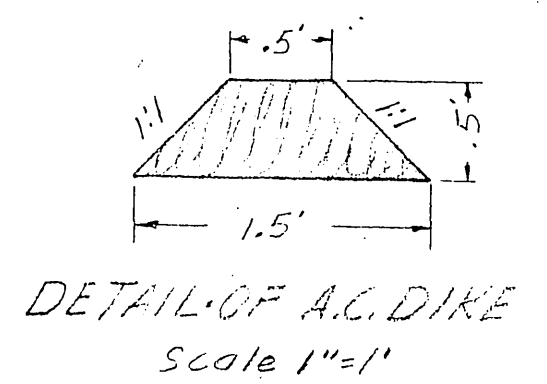
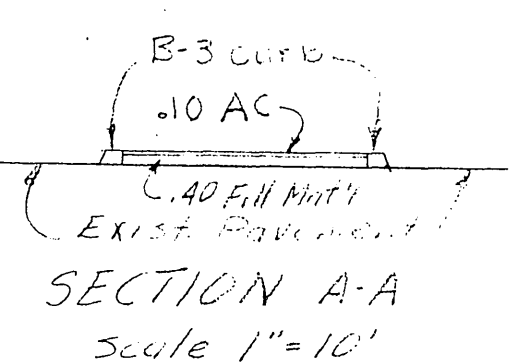
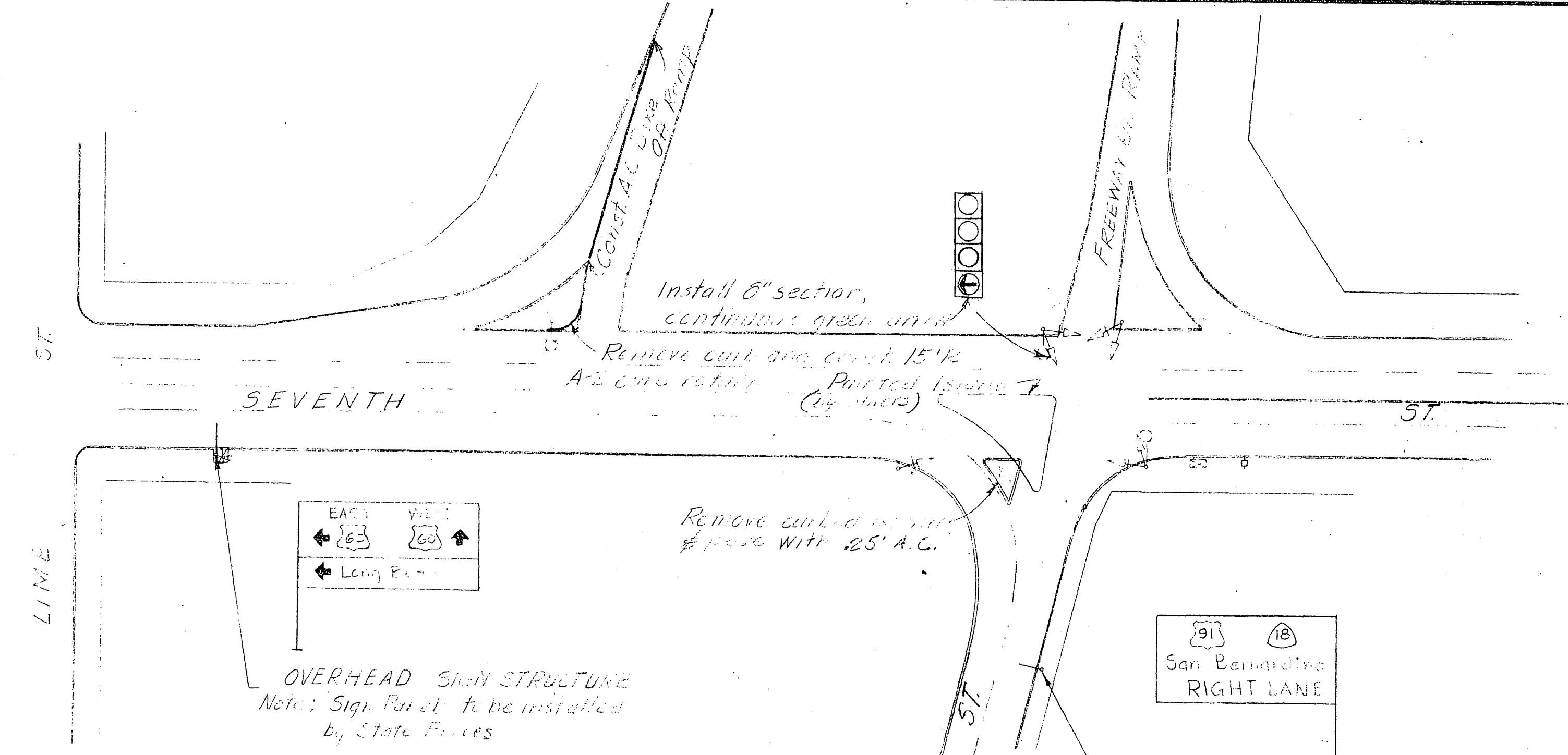
PLANS FOR CONSTRUCTION ON  
 STATE HIGHWAY  
 IN RIVERSIDE COUNTY IN RIVERSIDE ON MULBERRY STREET  
 AT SEVENTH STREET AND AT EIGHTH STREET

Project Engineer	Date	Design Engineer	Date	Approved/Recommended By	Date

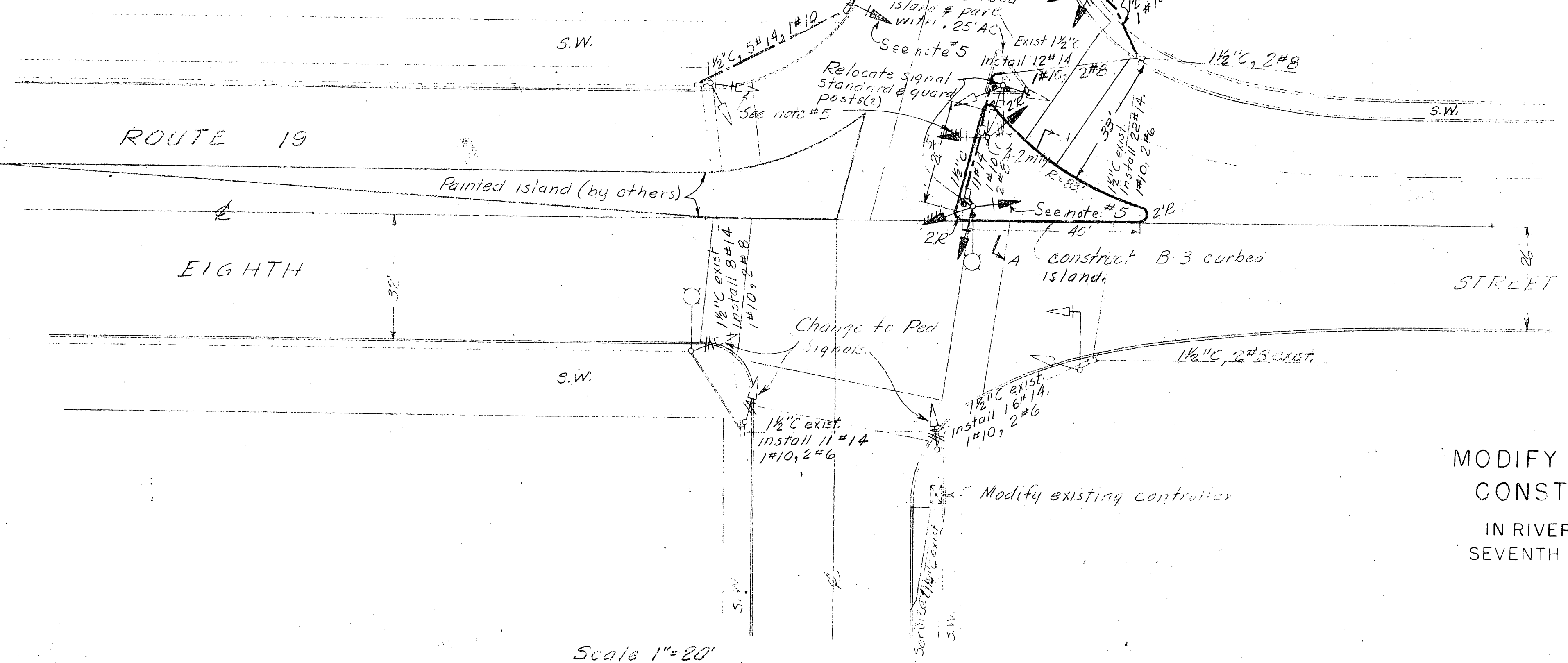
July 25, 1960



OVERHEAD SIGN STANDARD  
SCALE 1"=4'



- ~ NOTES ~
1. Painting of all pavement markings will be performed by others.
  2. Conductors indicated represent the total number required. Existing conductors may be reused when approved by the Engineer.
  3. Use spare conductors at Seventh St. and Mulberry for green arrow indication.
  4. Existing signals changed to provide two light pedestrian indications shall be reinstalled at the present ten foot mounting height.
  5. Install eight inch green arrow lens.
  6. Salvaged signal sections shall be reused.
  7. The two existing conductors which are to be used for interconnection will be determined by the Engineer.



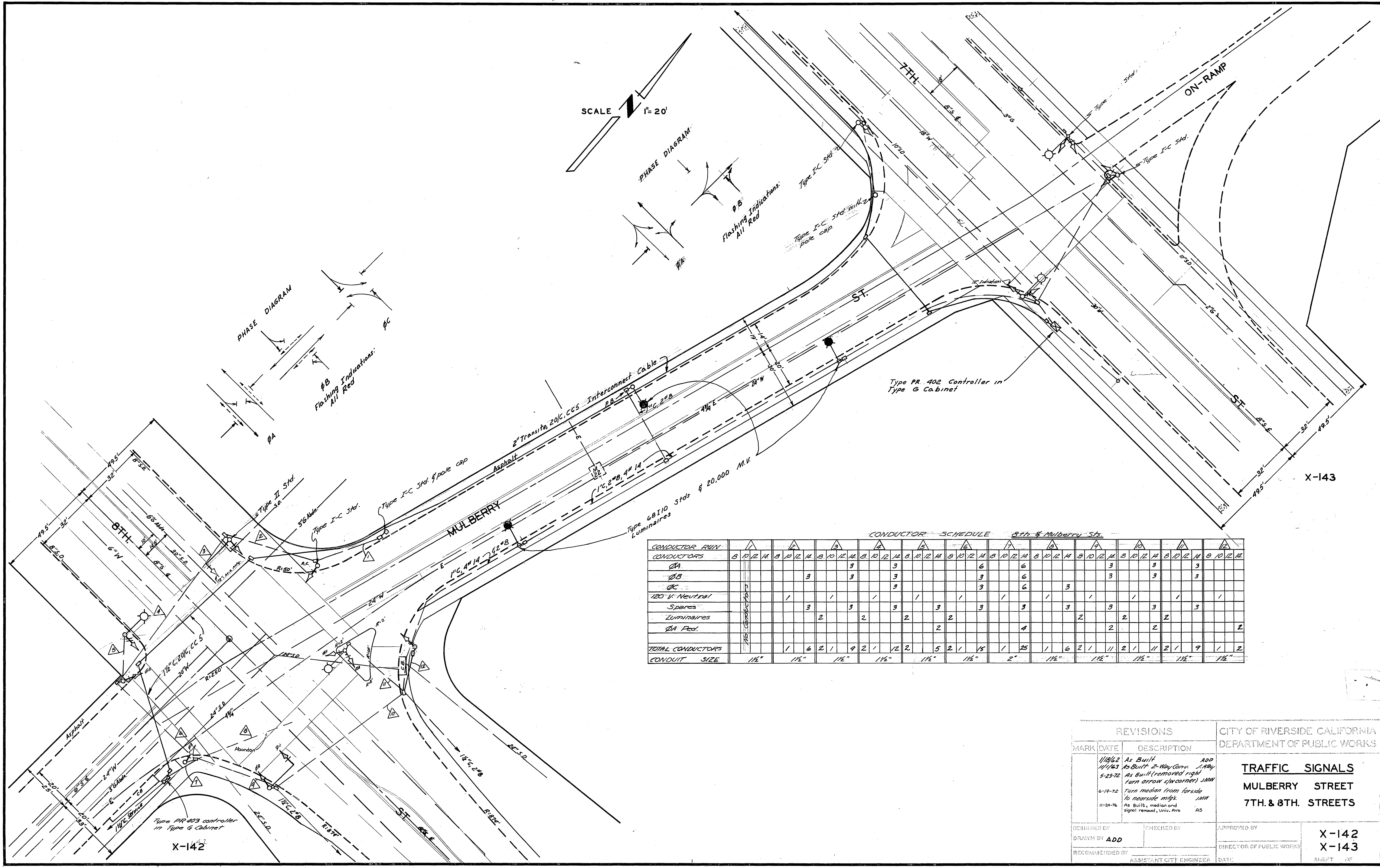
VIII-Riv-19-Riv  
**MODIFY TRAFFIC SIGNALS AND  
 CONSTRUCT CHANNELIZATION**  
 IN RIVERSIDE ON MULBERRY STREET AT  
 SEVENTH STREET AND AT EIGHTH STREET  
 SCALE-AS SHOWN

DESIGN DEPT.	INITIAL	DATE
Designed	MCK	7-60
Traced		
Checked		
Supervised by		

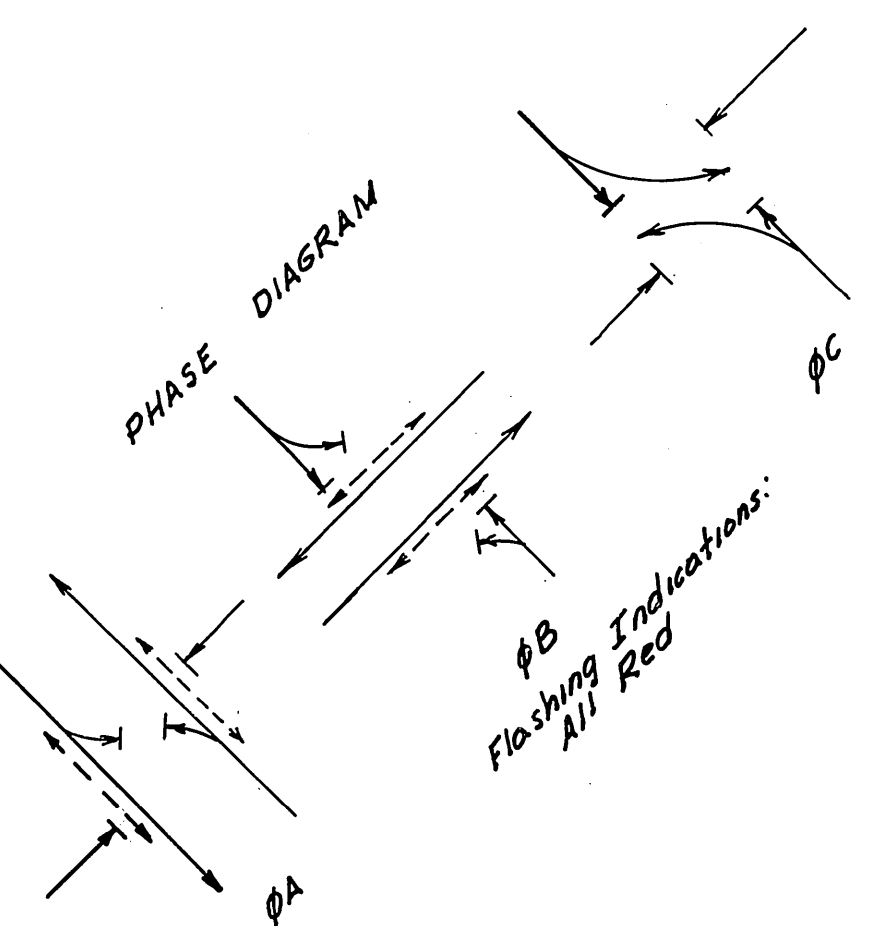
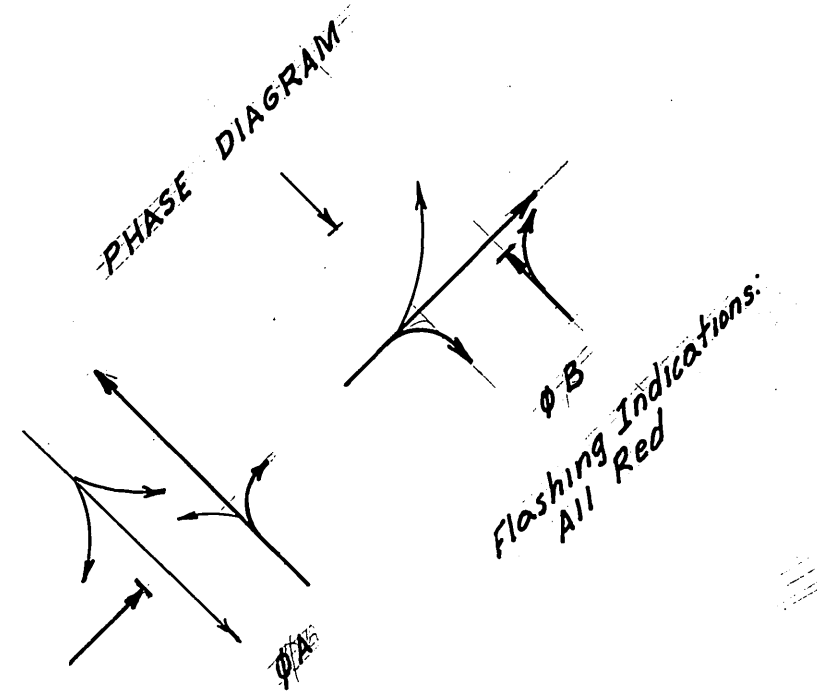
PROJECT ENGINEER	DATE	DESIGN ENGINEER	DATE	APPROVAL RECOMMENDED BY	DATE
[Signature]	7/60	[Signature]	7/60	[Signature]	7/60

X-142-143

8L  
h1  
h2



SCALE 1" = 20'



CONDUCTOR SCHEDULE 8th & Mulberry Sts.

CONDUCTOR RUN	A		B		C		A		B		C		A		B		C			
	8	10	12	14	8	10	12	14	8	10	12	14	8	10	12	14	8	10	12	14
CONDUCTORS																				
OA																				
OB																				
OC																				
120 V. Neutral																				
Spares																				
Luminaires																				
OA Red.																				
TOTAL CONDUCTORS																				
CONDUIT SIZE																				

REVISIONS			CITY OF RIVERSIDE CALIFORNIA DEPARTMENT OF PUBLIC WORKS
MARK	DATE	DESCRIPTION	
	1/18/62	As Built	<b>TRAFFIC SIGNALS</b> <b>MULBERRY STREET</b> <b>7TH. &amp; 8TH. STREETS</b>
	1/1/63	As Built - 2-Way Conv. JAW	
	5-23-72	As Built (removed right turn arrow sign/corner) JMW	
	6-19-72	Turn median from far side to nearside m/bk. JMW	
	11-24-76	As Built, median and signal removal, Univ. Ave AS	
DESIGNED BY	CHECKED BY	APPROVED BY	X-142
DRAWN BY ADD		DIRECTOR OF PUBLIC WORKS	X-143
RECOMMENDED BY	ASSISTANT CITY ENGINEER	DATE	SHEET OF

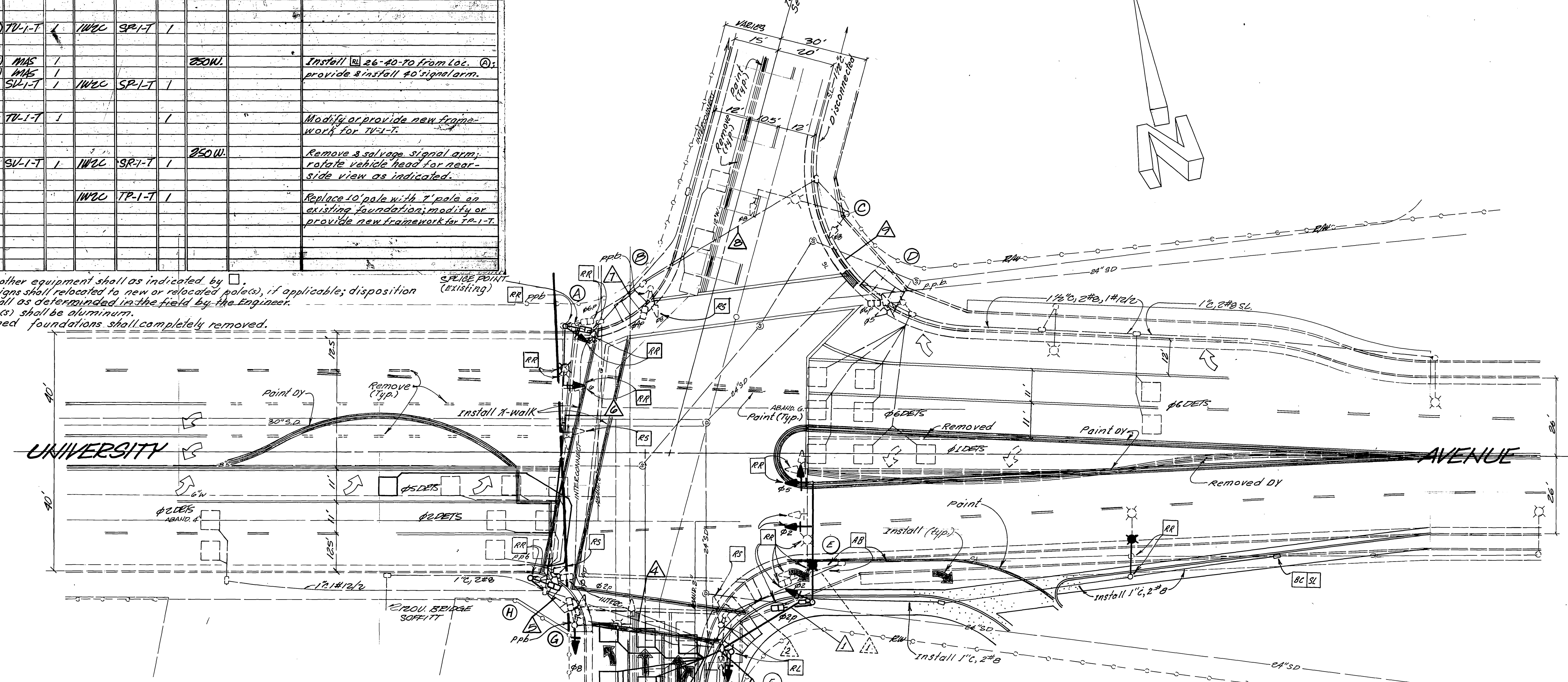
# EQUIPMENT SCHEDULE

LOCATION	STANDARD	VEHICLE HEADS			PEDESTRIAN HEADS			LUMINAIRE	INT ILLUM STREET NAME SIGN	REMARKS
		HEAD	Mounting	BACK PLATE	HEAD	Mounting	PFB			
A	17-2-80 206A/10A	1W3C(12")	MMS	1	1W3C	SP-1-T	1	250W.	Install signal arm; 26-4-70 pole; provide & install adapter plate for new 17-2-80	
B	1A(10')	1W3C	TV-1-T	1	1W3C	SP-1-T	1			
C	17-4-70 206A/10A	1W3C(12")	MMS	1	1W3C	SP-1-T	1	250W.		
D	1A(10')	1W3C(12")	TV-1-T	1	1W3C	SP-1-T	1			
E	26-4-70 405A/10A	1W3C(12")	MMS	1	1W3C	SP-1-T	1	250W.	Install 26-40-70 from Loc. C; provide & install #0 signal arm.	
F	1A(10')	W3C	TV-1-T	1			1		Modify or provide new framework for TV-1-T.	
G	17-2-70 121A	1W3C	SV-1-T	1	1W3C	SR-1-T	1	250W.	Remove & salvage signal arm; rotate vehicle head for near-side view as indicated.	
H	1A(10')				1W3C	TP-1-T	1		Replace 10' pole with 7' pole on existing foundation; modify or provide new framework for TP-1-T.	

### NOTES:

1. Detector loops are 6'x6' unless otherwise noted; spacing between detector loops is 10' and 15'.
2. Detector loops shall be installed in the presence of the Traffic Engineer or his representative.
3. No splicing of signal conductors will be allowed; Runs 1 and 3 shall have new conductors as required.
4. Refer to plans XL-285, XL-287 and X-143 for other requirements regarding pavement markings, signs and striping. Also, see Plans 9-323 for street improvements.

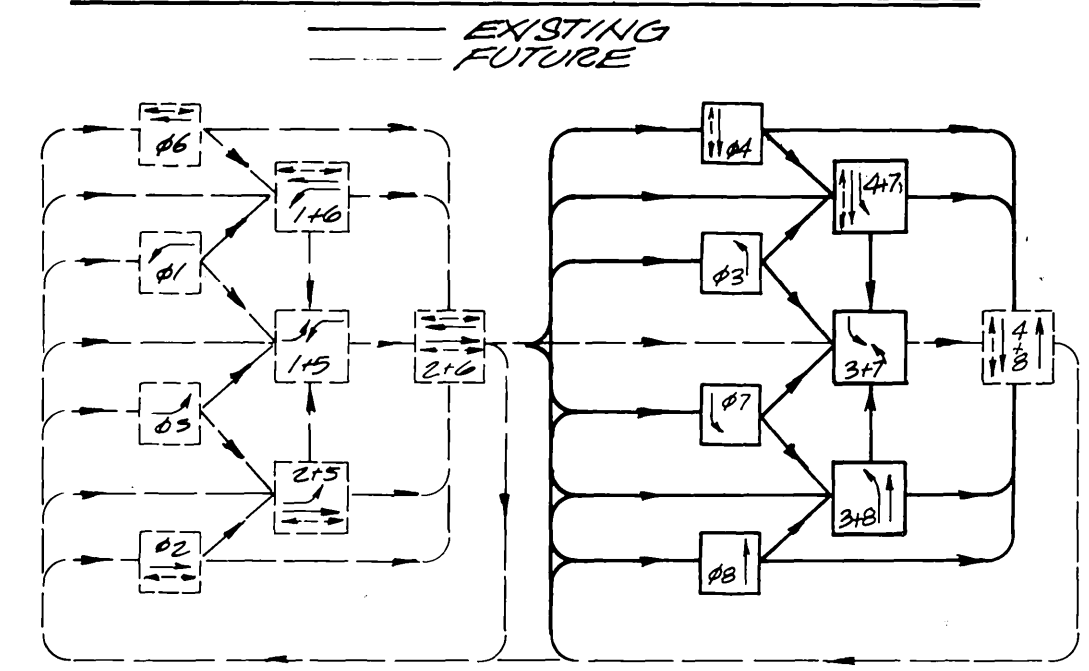
Notes: 1) Disposition of other equipment shall as indicated by  $\square$ .  
 2) Any existing signs shall be relocated to new or relocated poles(s), if applicable; disposition of others shall as determined in the field by the Engineer.  
 3) New 1A poles shall be aluminum.  
 4) All abandoned foundations shall completely removed.



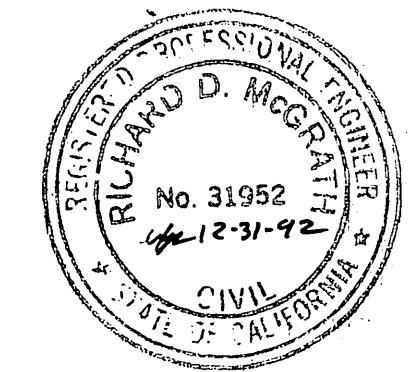
# CONDUCTOR SCHEDULE

CONTROL FUNCTION	CONDUCTORS	CONDUIT RUN																			
		1	2	3	4	5	6	7	8	9	10	11	12	13	14	15	16	17	18	19	20
VEHICLE HEADS	1																				
PEDESTRIAN HEADS	2																				
TRUCK DETECTORS	3																				
VEHICLE DETECTORS	4																				
PEDESTRIAN DETECTORS	5																				
TRUCK DETECTORS	6																				
VEHICLE DETECTORS	7																				
PEDESTRIAN DETECTORS	8																				
TRUCK DETECTORS	9																				
VEHICLE DETECTORS	10																				
PEDESTRIAN DETECTORS	11																				
TRUCK DETECTORS	12																				
VEHICLE DETECTORS	13																				
PEDESTRIAN DETECTORS	14																				
TRUCK DETECTORS	15																				
VEHICLE DETECTORS	16																				
PEDESTRIAN DETECTORS	17																				
TRUCK DETECTORS	18																				
VEHICLE DETECTORS	19																				
PEDESTRIAN DETECTORS	20																				

### EXISTING PHASE DIAGRAM



FLASHING INDICATIONS: ALL RED  
 Note: Phases 2, 4, 5, 6 and 8 shall be utilized; programming by City Forces.



ENGINEER IN RESPONSIBLE CHARGE  
 Richard D. McGrath  
 R.C.E. 31952 Expires: 12/31/92  
 DATE 7-10-91

EDA PROJECT  
 No. 07-01-03135

## CITY OF RIVERSIDE PUBLIC WORKS DEPARTMENT

APPROVED BY	DATE	BY
PRINCIPAL ENGINEER	7/10/91	R.D.M.
INSPECTOR	7-13-91	...
CHIEF ENGINEER	7-8-91	...
CHIEF W. ENGINEER	7-10-91	...
PUBLIC UTILITIES	7-10-91	...

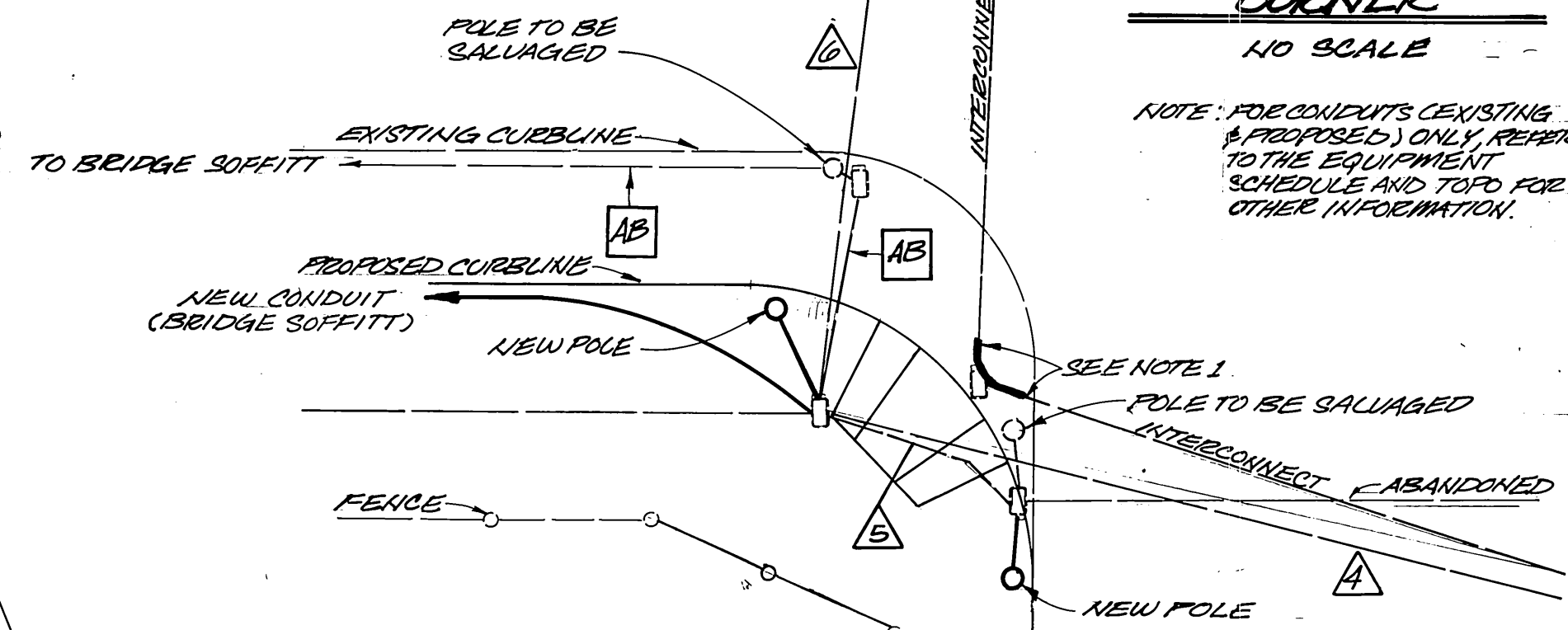
TRAFFIC SIGNAL MODIFICATIONS  
**UNIVERSITY AVENUE  
 AND  
 MULBERRY STREET**

ACCOUNT NO.  
**X-142**  
 SHEET 1 OF 1

NOTE: RUN 14 HAS DEPTH OF 15" NEAR NORTHERLY CURBLINE OF UNIVERSITY.  
 N=New; AB=Abandon; E=Existing.

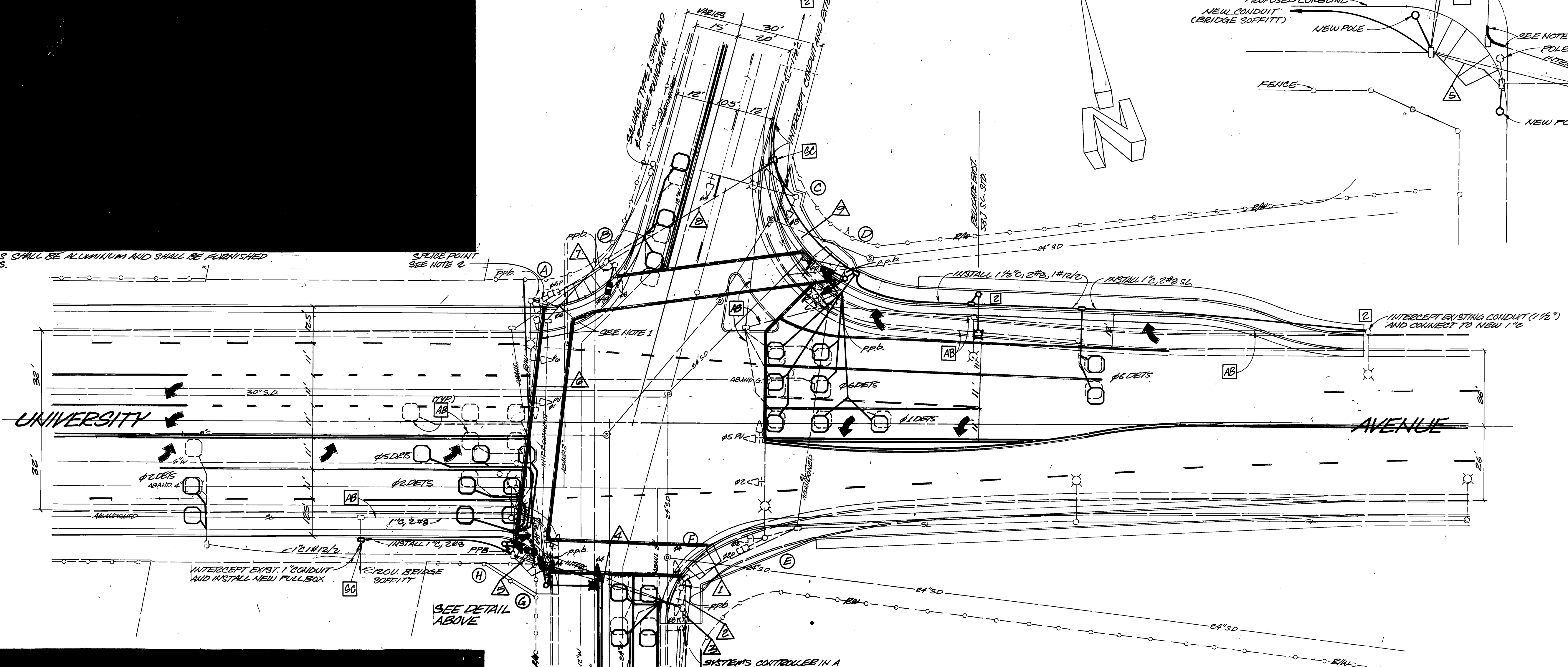
**DETAIL OF S/W CORNER**  
NO SCALE

NOTE: FOR CONDUITS EXISTING & PROPOSED ONLY, REFER TO THE EQUIPMENT SCHEDULE AND TSD FOR OTHER INFORMATION.

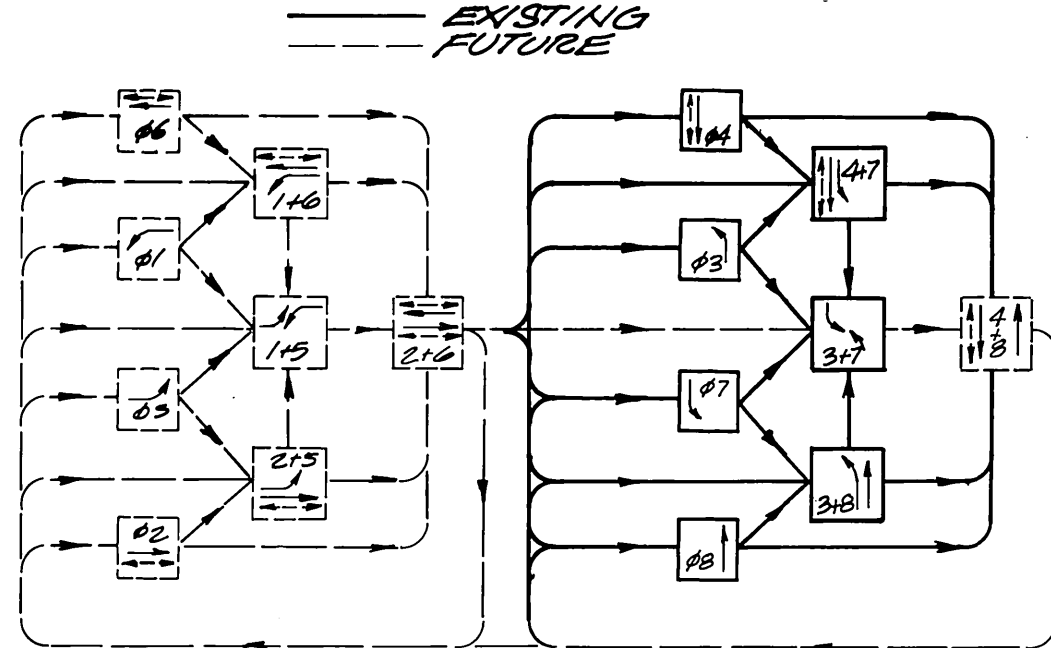


NEW TYPE 1A STANDARDS SHALL BE ALUMINUM AND SHALL BE FURNISHED WITH ANCHOR BOLT COVERS.

SPlice POINT SEE NOTE 2



**EXISTING PHASE DIAGRAM**



FLASHING INDICATIONS: ALL RED

**CONSTRUCTION NOTES**

- INTERCEPT EXISTING 1 1/2" INTERCONNECT CONDUIT AND REMOVE PULLBOX; INSTALL NEW SECTION OF CONDUIT, WITH DRAW, REINSTALL AND RECONNECT INTERCONNECT CONDUIT.
- SPlice POINT - INSTALL PHASE-A CONDUCTORS IN RUN Δ; SPlice IN PULLBOX TO EXISTING.
- EXISTING CABLE AND CONDUCTORS SHALL BE REUSED, EXCEPTING SL CONDUCTORS ALONG THE NORTHERLY SIDE OF UNIVERSITY; SPlice IN PULLBOX ADJACENT LOC. C.

- 1 120V LUMINAIRE (INTERSECTION) AND SOFFIT LIGHTING (BRIDGE) SERVICES.
- 2 240V LUMINAIRE SERVICE; SERVES (2) STREET LIGHTS.



NOTE: EVEN Δ HAS DEPTH OF 15" NEAR NORTHERLY CURBLINE OF UNIVERSITY.

<b>CITY OF RIVERSIDE</b> <b>PUBLIC WORKS DEPARTMENT</b>		<b>TRAFFIC SIGNAL REVISIONS</b> <b>UNIVERSITY AVENUE</b> <b>REDWOOD DR TO KANSAS AVE.</b> <b>UNIVERSITY AVE &amp; MULBERRY ST.</b>		ACCOUNT NO. 30-575-245-07 <b>X-142</b> SHEET ____ OF ____
APPROVED BY PRINCIPAL ENGINEER PARK DEPARTMENT TRAFFIC DIVISION CHIEF P.W. ENGINEER TELECOMMUNITIES	DATE 5/12/80 2:22 PM	APPROVED BY William S. Gardner PUBLIC WORKS DIRECTOR	DATE 5-30-80	HORIZ. SCALE: 1"=20' VERT. SCALE: 1"=