

CONDUCTOR SCHEDULE

CONTROL FUNCTION	CONDUCTORS		RUNS				
	SIZE	INSULATION	1	2	3	4	5
VEHICLE HEADS	#14	T.W.					
PHASE 2							3
PHASE 3				3	3	3	
PHASE 4			3	3	3	9	3
PHASE 6			3	3	3	3	
PED. HEADS							
PHASE 6			2	2	2	2	
PED. PUSH BUTTON							
PHASE 6			1	1	1	1	
SPARES							
12V COMMON			3	3	3	6	3
			1	1	1	2	1
DETECTORS	#16/2	P.E.					
PHASE 2							4
PHASE 3							1
PHASE 4						3	3
PHASE 6						3	3
I.I.S.N.S.	#12	T.W.					
120V COMMON	#10	T.W.	1	1	1	2	1
LUMINAIRES	#8	T.H.W.	2	2	2		
SIGNAL SERVICE	#4	T.H.W.					2
INTERCONNECT	#19/2	P.E.					1
CONDUIT SIZE			2"	2"	3"	2"	3"

NOTE: INTERCONNECT CABLE: 1-6 PAIR #19 GA WIRE.

EQUIPMENT SCHEDULE

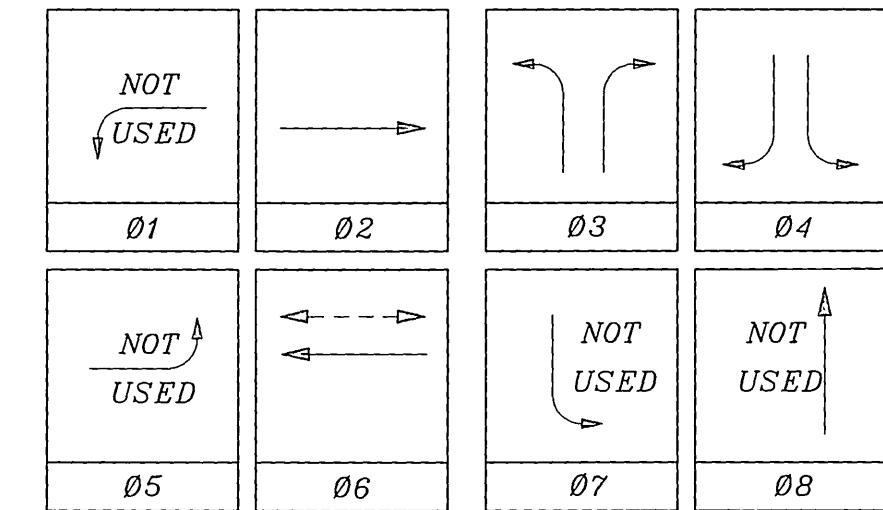
SIGNAL STANDARD NO.	TYPE	H'GHT	M.A.	LUMINAIRE L.A.	LUMINAIRE H.P.S.V.	I.I.S.N.S. LEGEND	SIGNAL MOUNTINGS			PPB PHASE
							VEHICLE	PEDESTRIAN	AUDIBLE	
(A)	17B-1-70	30'	15'	12'	250W		MAS	SV-1-T	SP-1-T	
(B)	1A	14'					TV-1-T			
(C)	19-1-80	30'	30'	12'	250W		MAS	SV-1-T		
(D)	1A	10'					TV-2-T	SP-1-T		6
(E)	1A	10'					TV-2-T			6

NOTES:
 1. ALL VEHICULAR HEADS HAVE 12" LENSES.
 2. ALL TYPE 1A STANDARDS ARE ALUMINUM.
 3. LUMINAIRES ARE HIGH PRESSURE SODIUM VAPOR.
 4. ALL SIGNAL HEADS WITH LEFT OR RIGHT TURN ARROWS HAVE RED BALL INDICATIONS.

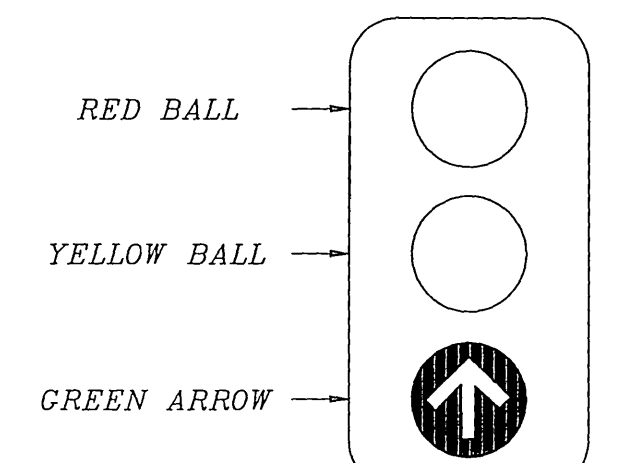
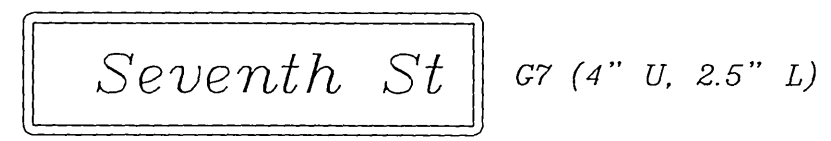
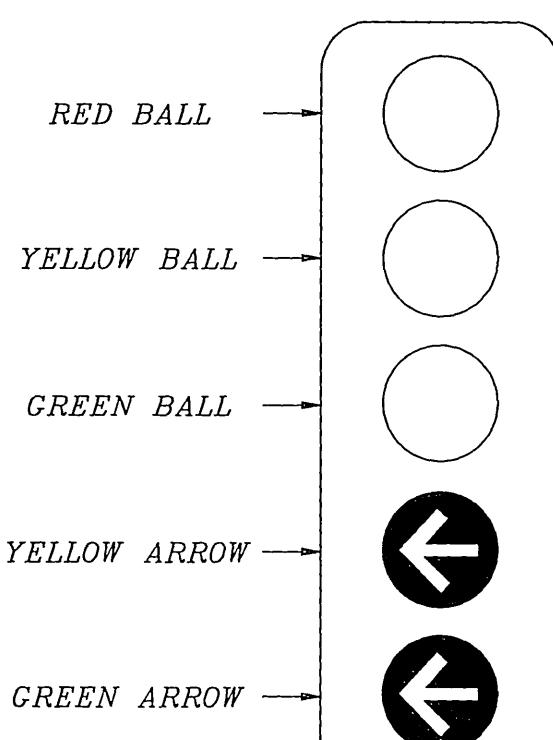
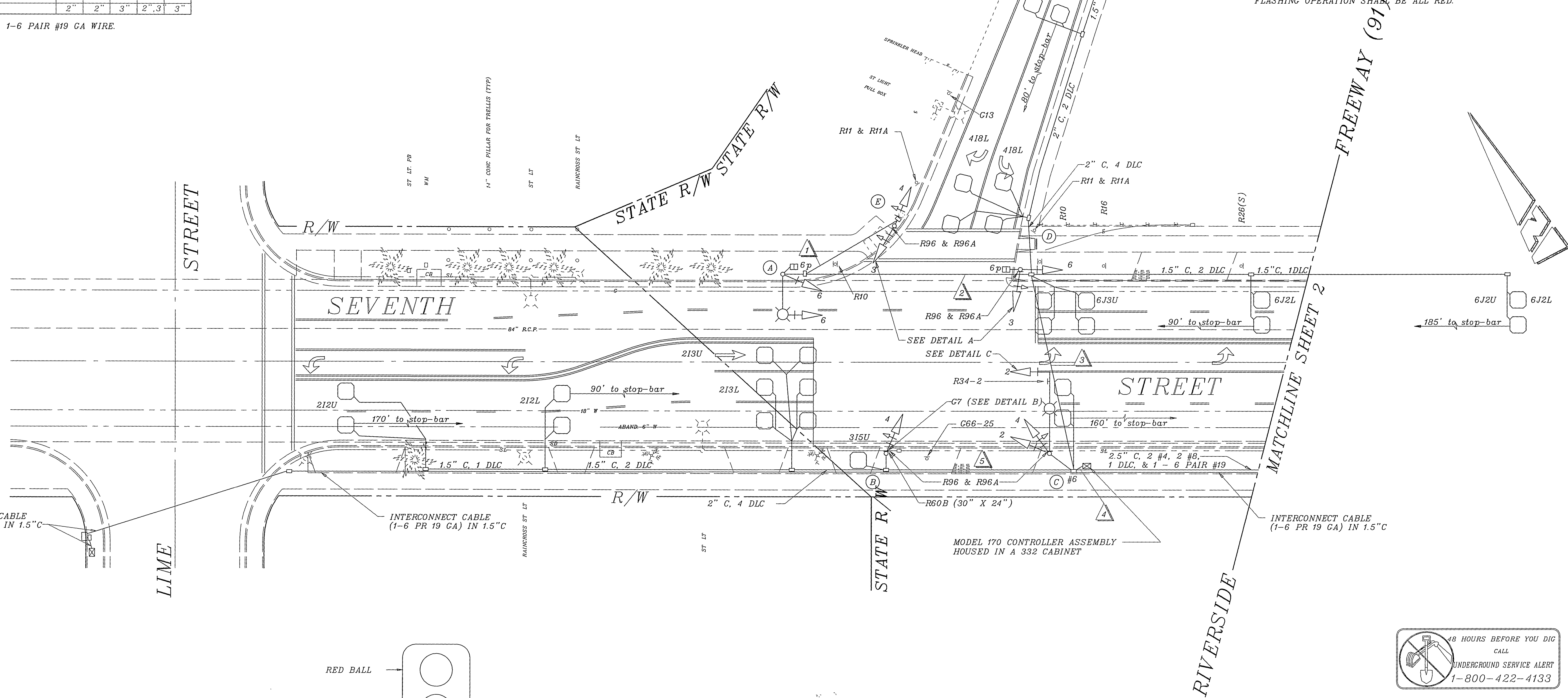
W41 AT APPROX. 300' IN ADVANCE OF INTERSECTION

R61-20.1 AT APPROX. 200' IN ADVANCE OF INTERSECTION

PHASE DIAGRAM



FLASHING OPERATION SHALL BE ALL RED.



ENGINEER IN RESPONSIBLE CHARGE
 RICHARD D. McGRATH
 R.C.E. No. 31952 expires 12-31-96
 DATE 1-10-95

CITY OF RIVERSIDE, CALIFORNIA
 DEPARTMENT OF PUBLIC WORKS

APPROVED BY: [Signature] BY: [Signature] DATE: [Date]

PRINCIPAL ENGINEER: [Signature] P.W. INSPECTION: [Signature] TRAFFIC DIVISION: [Signature] CHIEF P.W. ENGR. PUBLIC UTILITIES: [Signature]

AS-BUILT PER RIV. MARKETPLACE MAC 12/94
 REVISIONS: [Date]
 DESIGNED BY: [Signature] DRAWN BY: [Signature] CHECKED BY: [Signature]

TRAFFIC SIGNAL
SEVENTH STREET @ 91 FREEWAY

ACCT. NO. X-143
 SHEET 1 OF 2
 FILE NAME: X143-1.DWG

SCALE: 1" = 20'



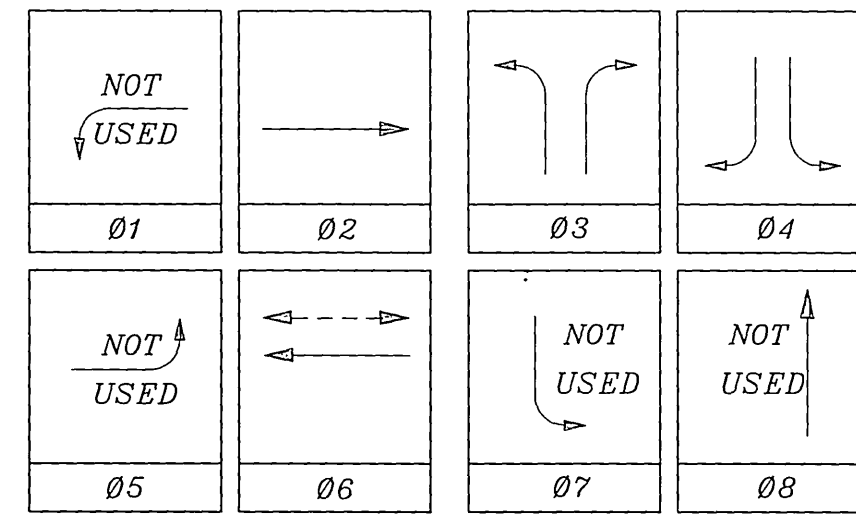
EQUIPMENT

SCHEDULE

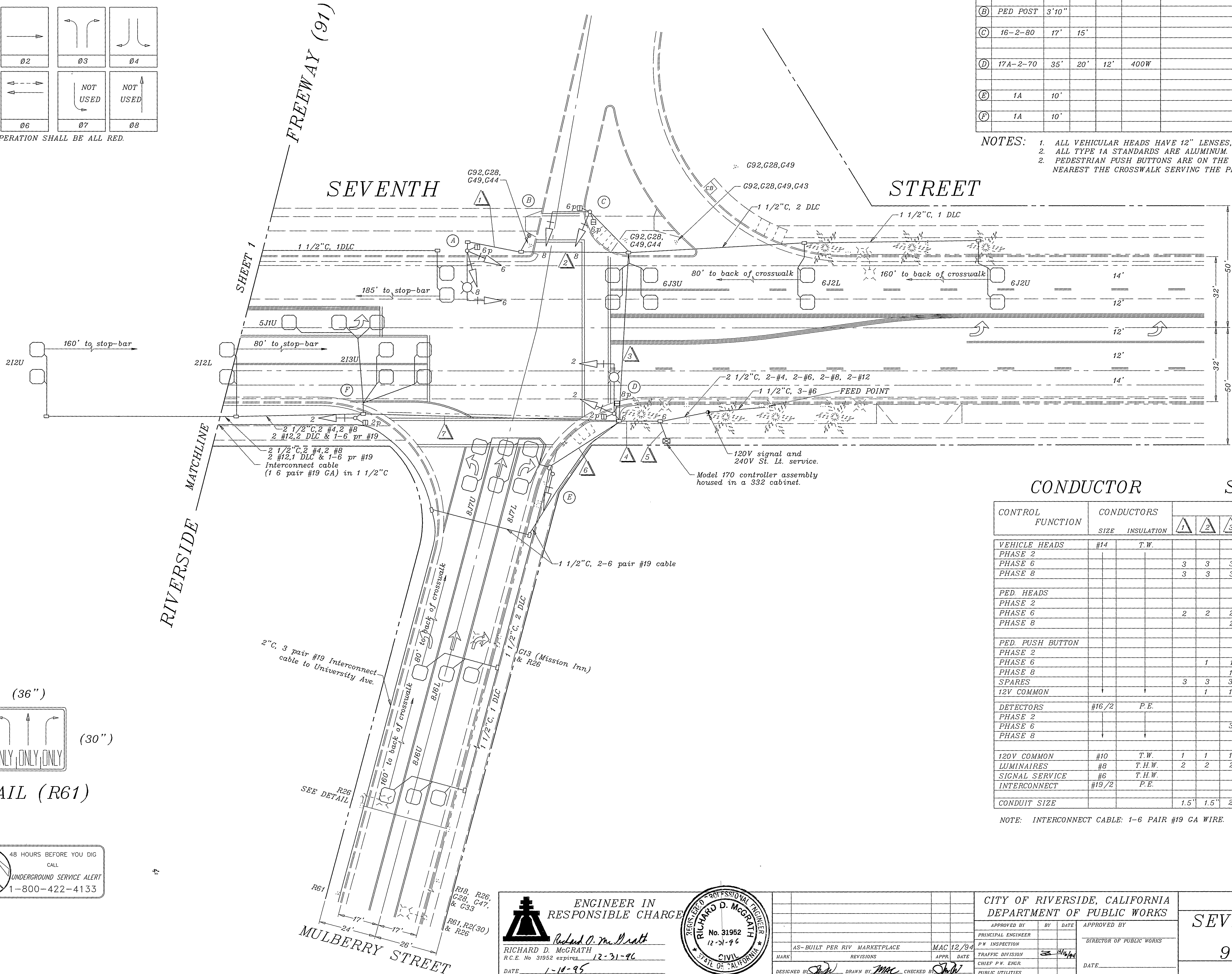
SIGNAL STANDARD NO.	TYPE	H'GHT	M.A.	LUMINAIRE		I.I.S.N.S. LEGEND	SIGNAL MOUNTINGS			PPB PHASE
				L.A.	H.P.S.V.		VEHICLE	PEDESTRIAN	AUDIBLE	
(A)	17A-2-70	35'	20'	12'	400W		MAS	SV-1-TD(8")	SP-1-T	
(B)	PED POST	3'10"								6
(C)	16-2-80	17'	15'				MAS	SV-1-T	SP-1-T	6,8
(D)	17A-2-70	35'	20'	12'	400W		MAS	SV-1-T(8")	SP-2-T	2,8
(E)	1A	10'					TV-1-T			
(F)	1A	10'					TV-1-T	SP-1-T		2

NOTES:
 1. ALL VEHICULAR HEADS HAVE 12" LENSES, EXCEPT AS NOTED.
 2. ALL TYPE 1A STANDARDS ARE ALUMINUM.
 3. PEDESTRIAN PUSH BUTTONS ARE ON THE POLE IN THE QUADRANT NEAREST THE CROSSWALK SERVING THE PHASE.

PHASE DIAGRAM



FLASHING OPERATION SHALL BE ALL RED.

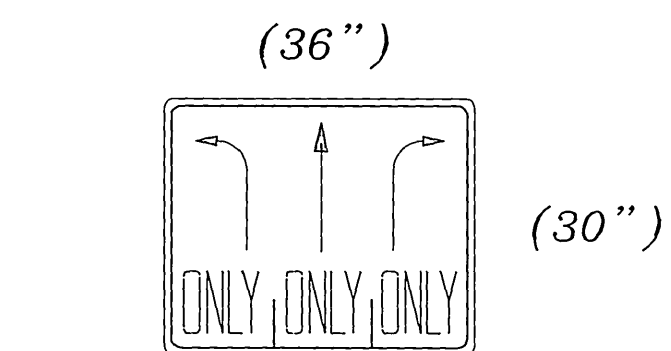


CONDUCTOR

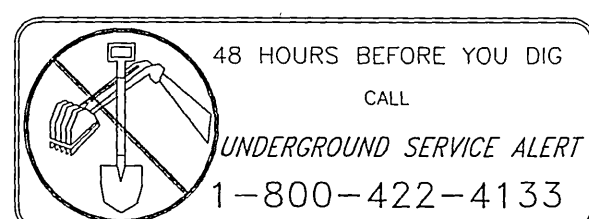
SCHEDULE

CONTROL FUNCTION	CONDUCTORS SIZE	INSULATION	RUNS															
			1	2	3	4	5	6	7									
VEHICLE HEADS	#14	T.W.																
PHASE 2							6	6										
PHASE 6			3	3	3	3												
PHASE 8			3	3	3	6	6	3										
PED HEADS																		
PHASE 2							2	2										
PHASE 6			2	2	2	2												
PHASE 8						2	2											
PED. PUSH BUTTON																		
PHASE 2							1	1										
PHASE 6						1	1	1	1									
PHASE 8						1	1	1										
SPARES			3	3	3	6	6	3	3									
12V COMMON						1	1	2	2	1	1							
DETECTORS	#16/2	P.E.																
PHASE 2								3	3									
PHASE 6								3	3									
PHASE 8								4	4	4								
120V COMMON	#10	T.W.	1	1	1	2	2	1	1									
LUMINAIRES	#8	T.H.W.	2	2	2	2												
SIGNAL SERVICE	#6	T.H.W.						2										
INTERCONNECT	#19/2	P.E.						2	2		1							
CONDUIT SIZE			1.5"	1.5"	2.5"	3"	3"	2"	3"									

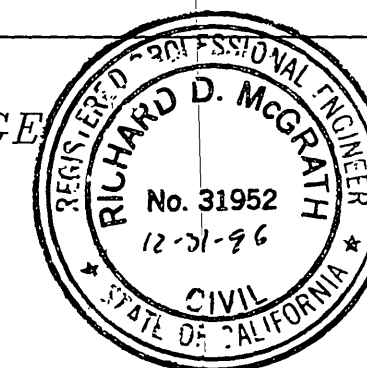
NOTE: INTERCONNECT CABLE: 1-6 PAIR #19 GA WIRE.



DETAIL (R61)



ENGINEER IN RESPONSIBLE CHARGE
 Richard D. McGrath
 R.C.E. No. 31952 expires 12-31-96
 DATE 1-10-95



AS-BUILT PER RIV MARKETPLACE
 REVISIONS
 DESIGNED BY: JAW
 DRAWN BY: MAC
 CHECKED BY: JAW

CITY OF RIVERSIDE, CALIFORNIA
 DEPARTMENT OF PUBLIC WORKS
 APPROVED BY: [Signature]
 TRAFFIC DIVISION
 CHIEF P.W. ENGR.
 PUBLIC UTILITIES

TRAFFIC SIGNAL
 SEVENTH STREET @
 91 FREEWAY
 SCALE: 1" = 20'

ACCT. NO. X-143
 SHEET 2 OF 2
 FILE NAME: X143-2.DWG