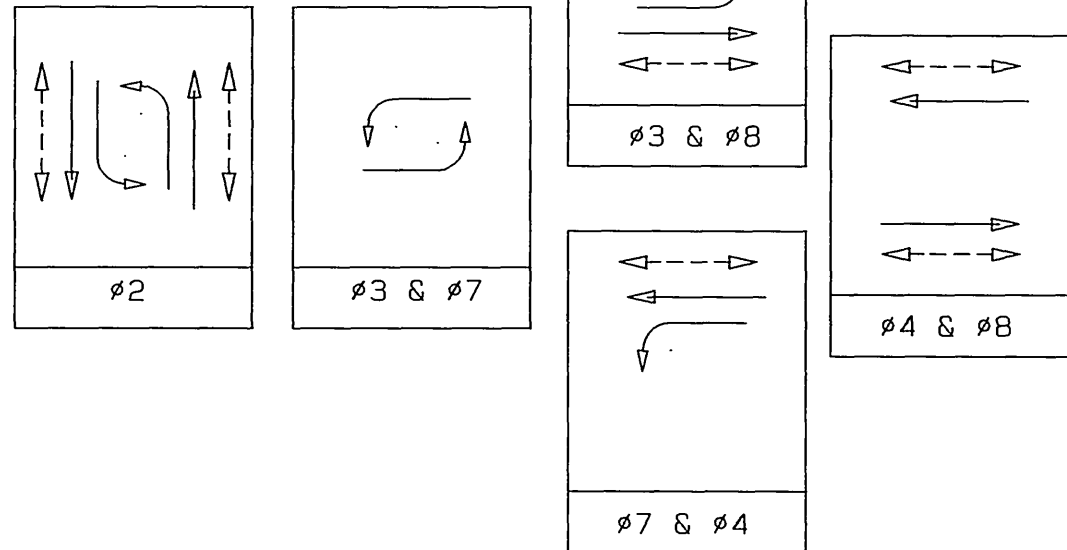


**CONSTRUCTION NOTES**

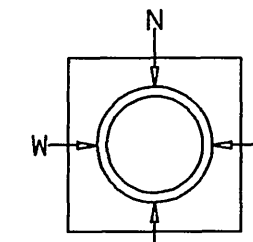
- 1 REMOVE AND SALVAGE EXISTING EQUIPMENTS, STREET LIGHT, SIGNAL HEADS, PEDESTRIAN HEADS, PEDSTRIAN PUSH BUTTONS, REMOVE EXISTING FOUNDATION.
- 2 INSTALL NEW EQUIPMENTS, STREET LIGHT, SIGNAL HEADS, PEDESTRIAN HEAD, PEDSTRIAN PUSH BUTTON AS SHOWN ON POLE SCHEDULE.
- 3 INSTALL TYPE 1-A AS SHOWN ON POLE SCHEDULE.
- 4 INSTALL 3-SECTIONAL ARROW VEHICLE INDICATION AS SHOWN.
- 5 REMOVE AND SALVAGE EXISTING EQUIPMENTS, STREET LIGHT, SIGNAL HEADS, PEDESTRIAN HEADS, PEDSTRIAN PUSH BUTTONS, REMOVE EXISTING FOUNDATION.
- 6 INSTALL NEW EQUIPMENTS, STREET LIGHT, SIGNAL HEADS, PEDESTRIAN HEADS, PEDSTRIAN PUSH BUTTONS AS SHOWN ON POLE SCHEDULE.
- 7 REMOVE AND SALVAGE VEHICLE INDICATION.

**PHASE DIAGRAM**

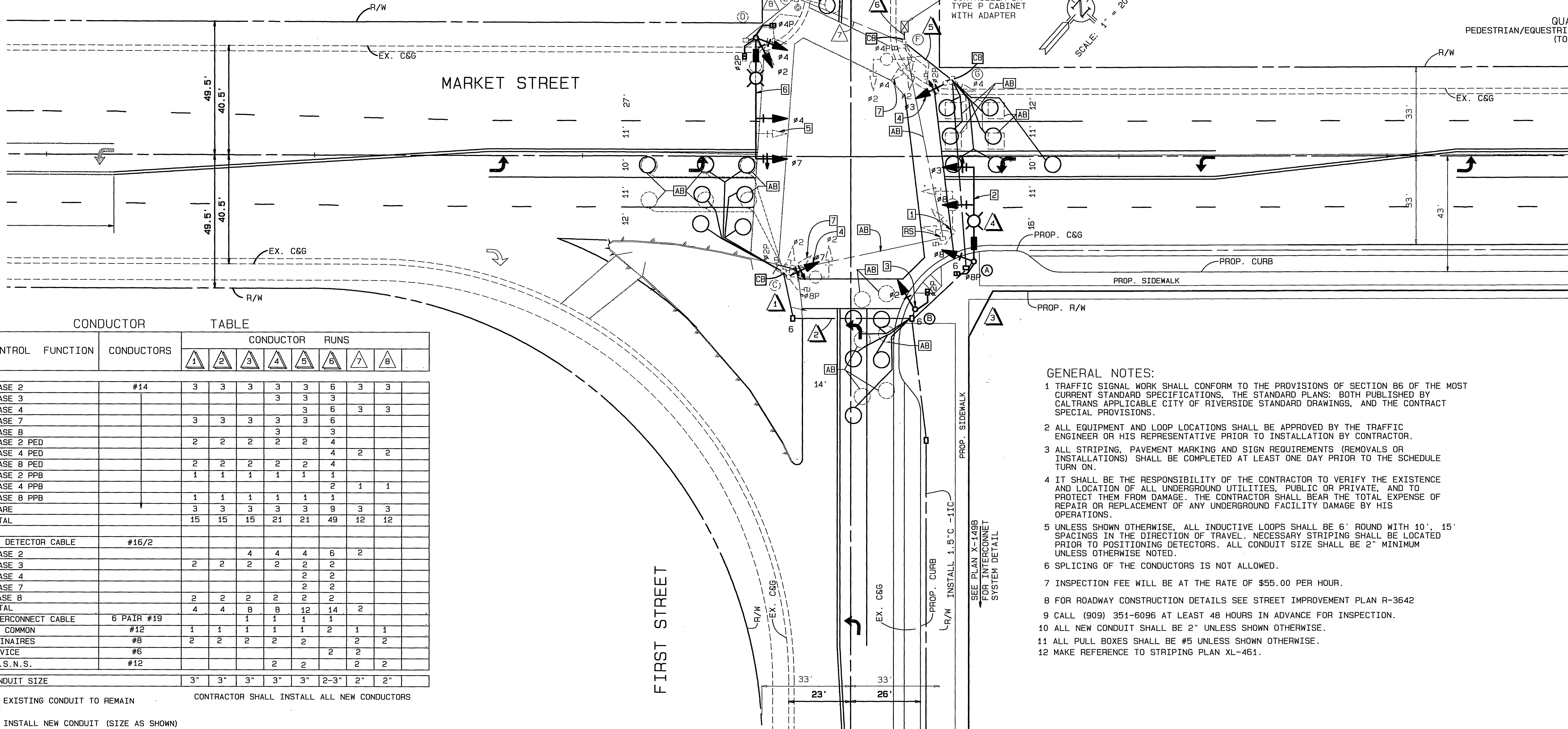


POLE SCHEDULE												
NO.	POLE TYPE	MAST ARM LENGTH			SIGNAL MOUNTING			PPB #	H. P. S. V. QUAD	LUMINAIRE	I. I. S. N. S. LEGEND	REMARKS
		HEIGHT	SIGNAL	LUMINAIRE	MA	POLE	PED					
A	19-3-80	30'	35'	15'	2-MAS	SV-1-T	SP-1-T	2	W	250 W	FIRST ST 3700	INSTALL NEW
B	1-A	10'	-	-	-	TV-1-T	SP-1-T	4	N	-	-	INSTALL NEW
C	TYPE 17	30'	15'	12'	MAS	SV-2-T	SP-2-T	4	S	250 W	-	MODIFY EXISTING, INSTALL NEW AS INDICATED
D	26-3-80	30'	45'	15'	2-MAS	SV-2-T	SP-2-T	2	N	250 W	FIRST ST 3800	INSTALL NEW
E	PPB POST	3'-10"	-	-	-	-	-	4	S	-	-	EXISTING TO REMAIN
F	TYPE 17	30'	15'	12'	MAS	SV-2-T	SP-2-T	2	S	250 W	-	EXISTING TO REMAIN
G	1-A	10'	-	-	-	TV-2-T	SP-1-T	-	-	-	-	MODIFY EXISTING, INSTALL NEW AS INDICATED

EXACT POLE LOCATION TO BE DETERMINED BY THE ENGINEER IN THE FIELD  
 TYPE 1-A SHALL BE SPUN ALUMINUM  
 NEW VEHICLE SIGNAL SHALL HAVE 12" LED PER CONTRACT SPECIAL PROVISIONS.

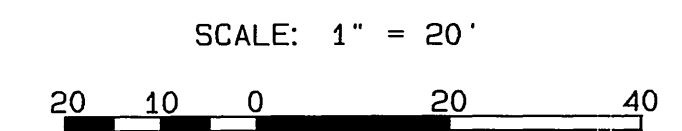


QUADRANT PEDESTRIAN/EQUESTRIAN PUSH BUTTON LOCATION (TOP VIEW)



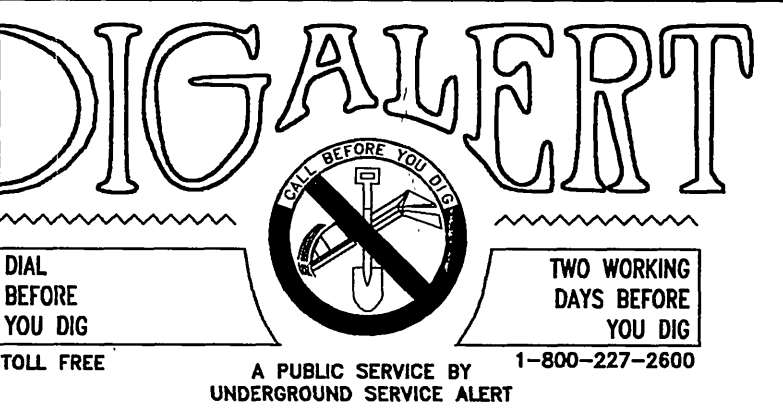
**GENERAL NOTES:**

- 1 TRAFFIC SIGNAL WORK SHALL CONFORM TO THE PROVISIONS OF SECTION 86 OF THE MOST CURRENT STANDARD SPECIFICATIONS, THE STANDARD PLANS, BOTH PUBLISHED BY CALTRANS APPLICABLE CITY OF RIVERSIDE STANDARD DRAWINGS, AND THE CONTRACT SPECIAL PROVISIONS.
- 2 ALL EQUIPMENT AND LOOP LOCATIONS SHALL BE APPROVED BY THE TRAFFIC ENGINEER OR HIS REPRESENTATIVE PRIOR TO INSTALLATION BY CONTRACTOR.
- 3 ALL STRIPING, PAVEMENT MARKING AND SIGN REQUIREMENTS (REMOVALS OR INSTALLATIONS) SHALL BE COMPLETED AT LEAST ONE DAY PRIOR TO THE SCHEDULE TURN ON.
- 4 IT SHALL BE THE RESPONSIBILITY OF THE CONTRACTOR TO VERIFY THE EXISTENCE AND LOCATION OF ALL UNDERGROUND UTILITIES, PUBLIC OR PRIVATE, AND TO PROTECT THEM FROM DAMAGE. THE CONTRACTOR SHALL BEAR THE TOTAL EXPENSE OF REPAIR OR REPLACEMENT OF ANY UNDERGROUND FACILITY DAMAGE BY HIS OPERATIONS.
- 5 UNLESS SHOWN OTHERWISE, ALL INDUCTIVE LOOPS SHALL BE 6' ROUND WITH 10' . 15' SPACINGS IN THE DIRECTION OF TRAVEL. NECESSARY STRIPING SHALL BE LOCATED PRIOR TO POSITIONING DETECTORS. ALL CONDUIT SIZE SHALL BE 2" MINIMUM UNLESS OTHERWISE NOTED.
- 6 SPLICING OF THE CONDUCTORS IS NOT ALLOWED.
- 7 INSPECTION FEE WILL BE AT THE RATE OF \$55.00 PER HOUR.
- 8 FOR ROADWAY CONSTRUCTION DETAILS SEE STREET IMPROVEMENT PLAN R-3642
- 9 CALL (909) 351-6096 AT LEAST 48 HOURS IN ADVANCE FOR INSPECTION.
- 10 ALL NEW CONDUIT SHALL BE 2" UNLESS SHOWN OTHERWISE.
- 11 ALL PULL BOXES SHALL BE #5 UNLESS SHOWN OTHERWISE.
- 12 MAKE REFERENCE TO STRIPING PLAN XL-461.



CONTROL FUNCTION	CONDUCTORS	CONDUCTOR RUNS							
		1	2	3	4	5	6	7	8
PHASE 2	#14	3	3	3	3	3	6	3	3
PHASE 3					3	3	3		
PHASE 4					3	3	6	3	3
PHASE 7		3	3	3	3	3	6		
PHASE 8					3	3			
PHASE 2 PED		2	2	2	2	2	4		
PHASE 4 PED							4	2	2
PHASE 8 PED		2	2	2	2	2	4		
PHASE 2 PPB		1	1	1	1	1	1		
PHASE 4 PPB							2	1	1
PHASE 8 PPB		1	1	1	1	1	1		
SPARE		3	3	3	3	3	9	3	3
TOTAL		15	15	15	21	21	49	12	12
DETECTOR CABLE #16/2									
PHASE 2				4	4	4	6	2	
PHASE 3		2	2	2	2	2	2		
PHASE 4							2		
PHASE 7							2		
PHASE 8		2	2	2	2	2	2		
TOTAL		4	4	8	8	12	14	2	
INTERCONNECT CABLE 6 PAIR #19									
PPB COMMON	#12	1	1	1	1	1	2	1	1
LUMINAIRES	#8	2	2	2	2	2	2	2	2
SERVICE	#6						2	2	
I. I. S. N. S.	#12				2	2	2	2	
CONDUIT SIZE		3"	3"	3"	3"	3"	2-3"	2"	2"

▲ EXISTING CONDUIT TO REMAIN      ▲ INSTALL NEW CONDUIT (SIZE AS SHOWN)  
 CONTRACTOR SHALL INSTALL ALL NEW CONDUCTORS



CITY BUSINESS TAX CERTIFICATE NO. 005751 EXP. 12-31-02  
**ALBERT A. WEBB ASSOCIATES**  
 CIVIL ENGINEERS  
 3788 MCCRAY STREET RIVERSIDE, CA 92506  
 (909) 686-1070  
 APPROVED BY: *Mol & Fey* DATE: 5/22/02  
 R. C. E. NO. C39530  
 W.O. 01-0049 FOR: REGIONAL PROPERTIES F.B. 1999

MARK	REVISIONS	APPR.	DATE

CITY OF RIVERSIDE, CALIFORNIA  
 PUBLIC WORKS DEPARTMENT  
 APPROVED BY: *[Signature]* DATE: *5/22/02*  
 PRINCIPAL ENGINEER  
 TRAFFIC DIVISION  
 STREET SERVICES  
 APPROVED BY: *[Signature]*  
 DIRECTOR OF PUBLIC WORKS  
 DATE: *5/22/02*

**SIGNAL MODIFICATION PLANS**  
**MARKET STREET AND FIRST STREET**  
 SCALE: 1" = 20'

ACCOUNT NO. 01-0049  
 DRAWING NUMBER  
**X-148B**  
 SHEET 1 OF 1  
 010049

6:2600101-0049\010485-mek-pr05/17/2002

**EQUIPMENT SCHEDULE**

NO.	SIGNAL STANDARD			LUMINAIRE		I.I.S.N.S. LEGEND	SIGNAL MOUNTINGS			PPB PHASE	REMARKS
	TYPE	H'GHT	M.A.	L.A.	H.P.S.V.		VEHICLE	PEDESTRIAN	AUDIBLE		
(A)	24-4-80	30'	35'	12'	250W	BLANK	2-MAS	SV-2-TD	SP-2-T	((C))((P))((N))	
	PED. POST	3'10"									4
(B)	PED. POST	3'10"									6
(C)	17-2-80(N)	30'(N)	20'(N)	12'(N)	200W(N)		MAS(N)	SV-1-T(N)	SP-1-T(N)	((P))((N))	6(N)
											REMOVE AND SALVAGE EXIST. POLE AND EQUIPMENT
(D)	1A(N)	10'(N)					TV-1-T(N)	SP-1-T(N)		((C))((N))	8(N)
											RS EXIST POLE AND EQUIPMENT
(E)	24-4-80	30'	35'	12'	250W	BLANK	MAS	SV-1-T	SP-1-T	((C))((N))	8
(F)	1A(N)	10'(N)					TV-1-T(N)	TP-1-T		((P))((N))	2
(G)	17-2-80(N)	30'(N)	20'(N)	12'(N)	200W(N)		MAS(N)	SV-1-T(N)	SP-1-T(N)	((P))((N))	2(N)
											REMOVE AND SALVAGE EXIST. POLE AND EQUIPMENT
(H)	1A(N)	10'(N)					TV-1-T(N)	SP-1-T(N)		((C))((N))	4(N)
											RS EXIST POLE AND EQUIPMENT

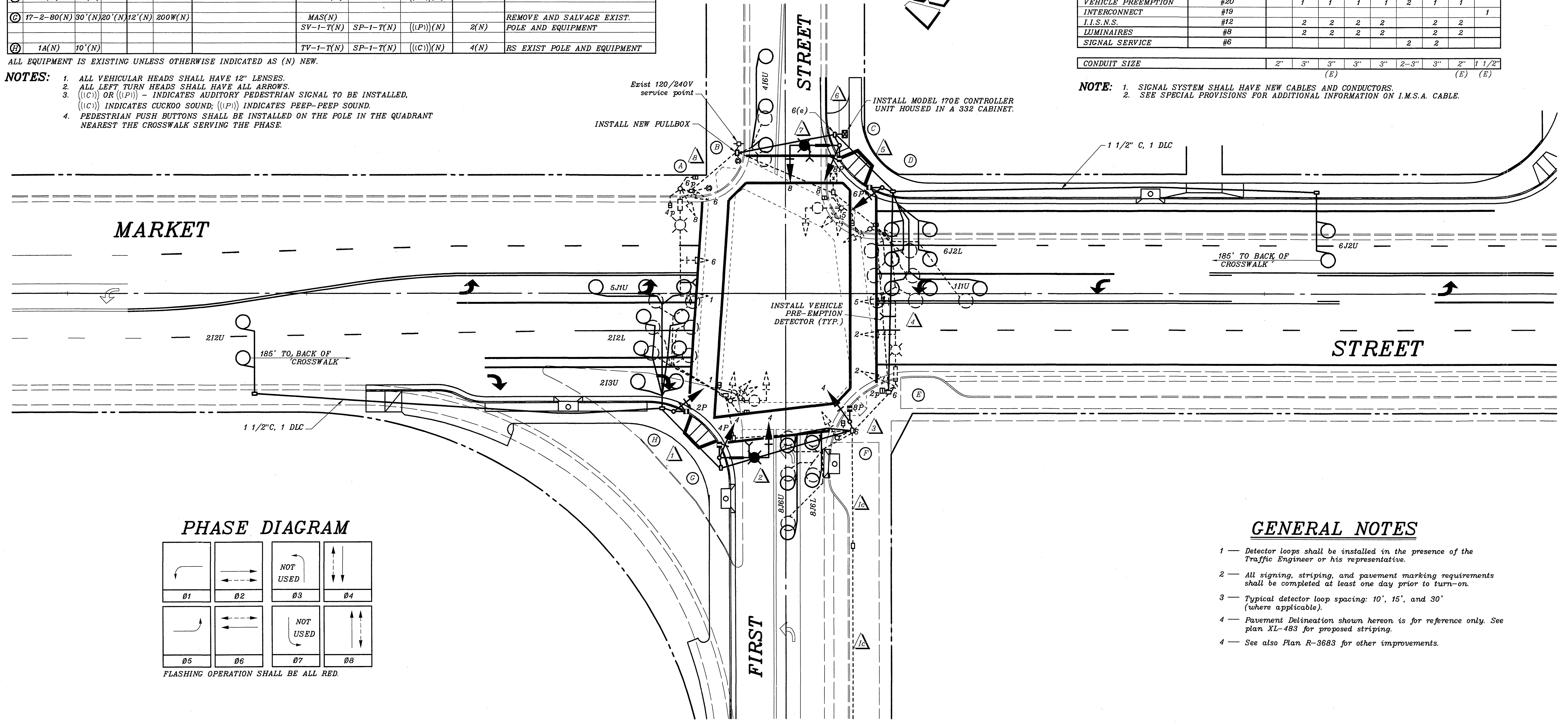
ALL EQUIPMENT IS EXISTING UNLESS OTHERWISE INDICATED AS (N) NEW.

- NOTES:**
1. ALL VEHICULAR HEADS SHALL HAVE 12" LENSES.
  2. ALL LEFT TURN HEADS SHALL HAVE ALL ARROWS.
  3. ((C)) OR ((P)) - INDICATES AUDITORY PEDESTRIAN SIGNAL TO BE INSTALLED. ((C)) INDICATES CUCKOO SOUND; ((P)) INDICATES PEEP-PEEP SOUND.
  4. PEDESTRIAN PUSH BUTTONS SHALL BE INSTALLED ON THE POLE IN THE QUADRANT NEAREST THE CROSSWALK SERVING THE PHASE.

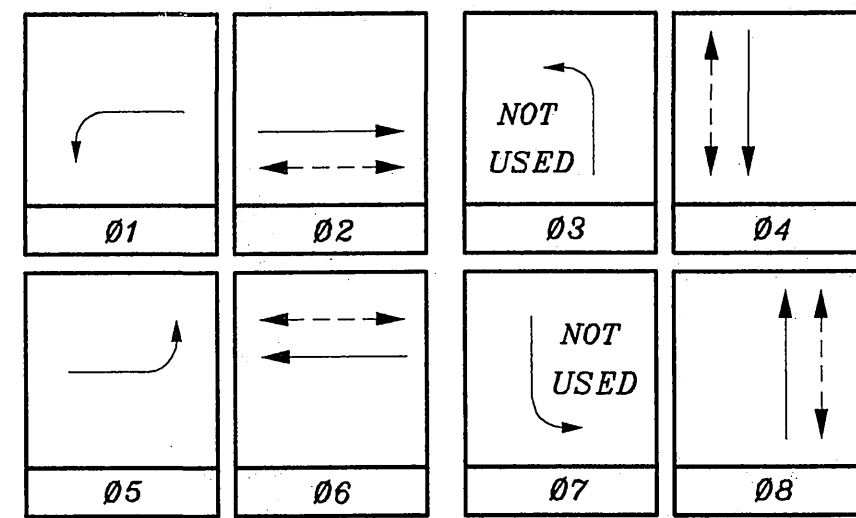
**CONDUCTOR TABLE**

CONTROL FUNCTION	CONDUCTORS	CONDUCTOR RUNS									
		1	2	3	4	5	6	7	8	1c	
VEHICLE & PEDESTRIAN HEADS, PEDESTRIAN PUSH BUTTONS, SPARES & COMMONS	12 WIRE IMSA 3 WIRE IMSA	1	2	3	4	5	7	1	1		
DETECTOR CABLE	#16/2					1	1				
PHASE 1											
PHASE 2		2	2	2	2	2	2				
PHASE 4								1	1		
PHASE 5		1	1	1	1	1	1				
PHASE 6						2	2				
PHASE 8						1	1	1	1		
VEHICLE PREEMPTION INTERCONNECT	#20 #19		1	1	1	1	2	1	1		1
I.I.S.N.S.	#12		2	2	2	2		2	2		
LUMINAIRES	#8		2	2	2	2		2	2		
SIGNAL SERVICE	#6							2	2		
CONDUIT SIZE		2"	3"	3"	3"	3"	2-3"	3"	2"	1 1/2"	(E) (E)

- NOTE:**
1. SIGNAL SYSTEM SHALL HAVE NEW CABLES AND CONDUCTORS.
  2. SEE SPECIAL PROVISIONS FOR ADDITIONAL INFORMATION ON I.M.S.A. CABLE.



**PHASE DIAGRAM**



FLASHING OPERATION SHALL BE ALL RED.

**GENERAL NOTES**

- 1 - Detector loops shall be installed in the presence of the Traffic Engineer or his representative.
- 2 - All signing, striping, and pavement marking requirements shall be completed at least one day prior to turn-on.
- 3 - Typical detector loop spacing: 10', 15', and 30' (where applicable).
- 4 - Pavement Delineation shown hereon is for reference only. See plan XL-483 for proposed striping.
- 4 - See also Plan R-3683 for other improvements.

**IMPORTANT NOTICE**  
Section 4216/4217 of the Government Code requires a Dig Alert Identification Number to be issued before a "Permit to Excavate" will be valid. For your Dig Alert ID, Number call CALL TOLL FREE TWO WORKING DAYS BEFORE YOU DIG UNDERGROUND SERVICE ALERT 1-800-227-2600

**ENGINEER IN RESPONSIBLE CHARGE**  
THOMAS JOHN BOYD  
R.C.E. No. 36170 expires 6/24/06  
DATE 8/22/04

REGISTERED PROFESSIONAL ENGINEER  
THOMAS JOHN BOYD  
No. 36170  
Exp. 06-30-2006  
CIVIL  
STATE OF CALIFORNIA

MARK	REVISIONS	APPR.	DATE

DESIGNED BY: MAC DRAWN BY: MAC CHECKED BY:

**CITY OF RIVERSIDE, CALIFORNIA DEPARTMENT OF PUBLIC WORKS**

APPROVED BY	BY	DATE	APPROVED BY	DATE
PRINCIPAL ENGINEER	TH	8/15/04	THOMAS JOHN BOYD	8/22/04
TRAFFIC DIVISION		8/26/04	CITY ENGINEER	

**TRAFFIC SIGNAL MODIFICATION**  
**MARKET STREET AT FIRST STREET**  
SCALE: 1" = 20'

ACCT. NO. 9544830214-44030200  
**X-148A**  
SHEET 1 OF 1  
FILE NAME: X148A.DWG

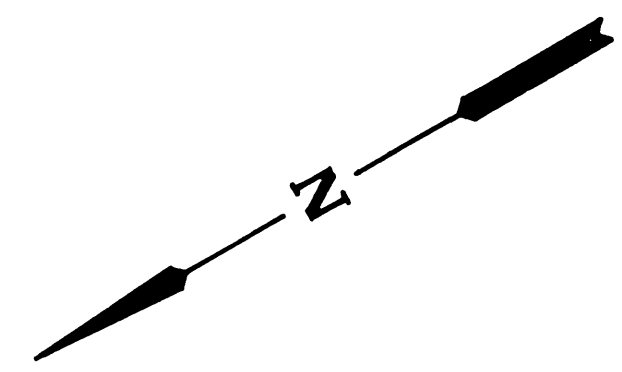
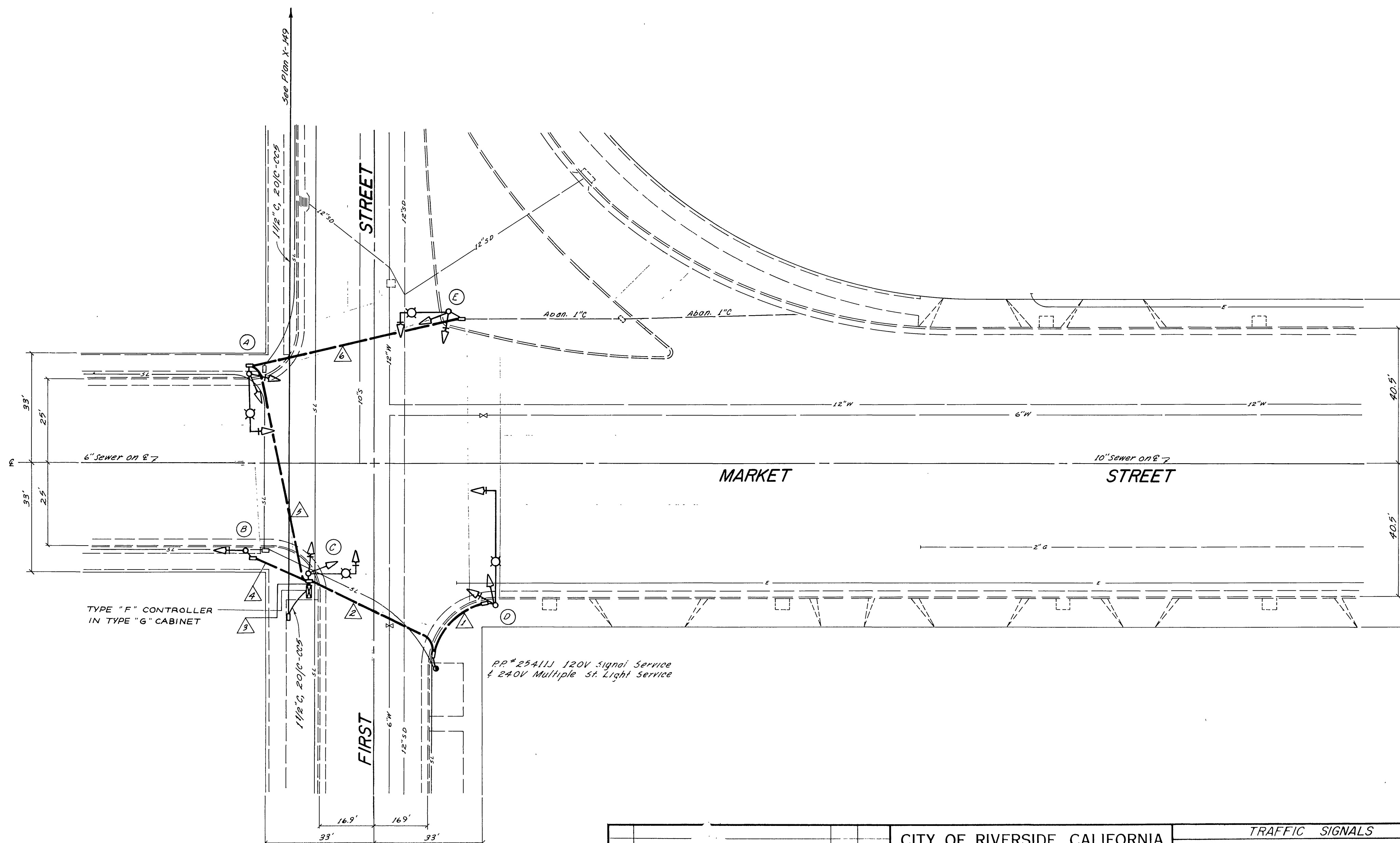
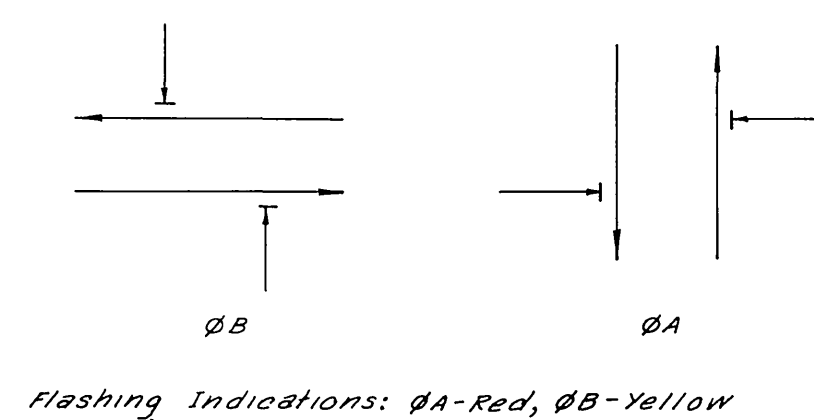
EQUIPMENT SCHEDULE

Loc.	Std.	Vehicle Equipment			Pedestrian Equipment			Luminaire
		Heads	Mtg.	BackPlate	Louvers	Heads	Mtg.	
A	56 J10	2-W3C(12)	B-2	1				400W
B	Type-J	1-W3C(12)	M2, 15MA	1				400W
C	Type-III	2-W3C(12)	B-2	1				1000W
D	Type-XII	2-W3C(12)	M2, 15MA	1				400W
E	Type-XVII	2-W3C(12)	B-2	1				400W

CONDUCTOR SCHEDULE

Control Function	Conductors		Conduit Run						
	Size	Insulation	1	2	3	4	5	6	7
Vehicle Heads	#14	T.W.							
ØA			3	3	9	3	3	3	
ØB			3	3	6		3	3	
Spores			3	3	3	3	3	3	
12V Common	#12								
120V Common	#10		1	1	1	1	1	1	
Signal Service	#8			2	2				
Luminaires			2	2			2	2	
Interconnect									
Totals	#14		9	9	18	6	9	9	
	#12								
	#10		1	1	1	1	1	1	
	#8		2	4	2		2	2	
Conduit Size			1 1/2"	2"	1 1/2"	1 1/2"	1 1/2"	1 1/2"	

PHASE DIAGRAM



CITY OF RIVERSIDE, CALIFORNIA PUBLIC WORKS DEPARTMENT		TRAFFIC SIGNALS	ACCOUNT No.
APPROVED BY _____ PRINCIPAL ENGINEER		MARKET STREET & FIRST STREET	DRAWING NUMBER
APPROVED BY _____ DIRECTOR OF PUBLIC WORKS			X-148
SCALE: 1"=20'		SHEET _____ OF _____	