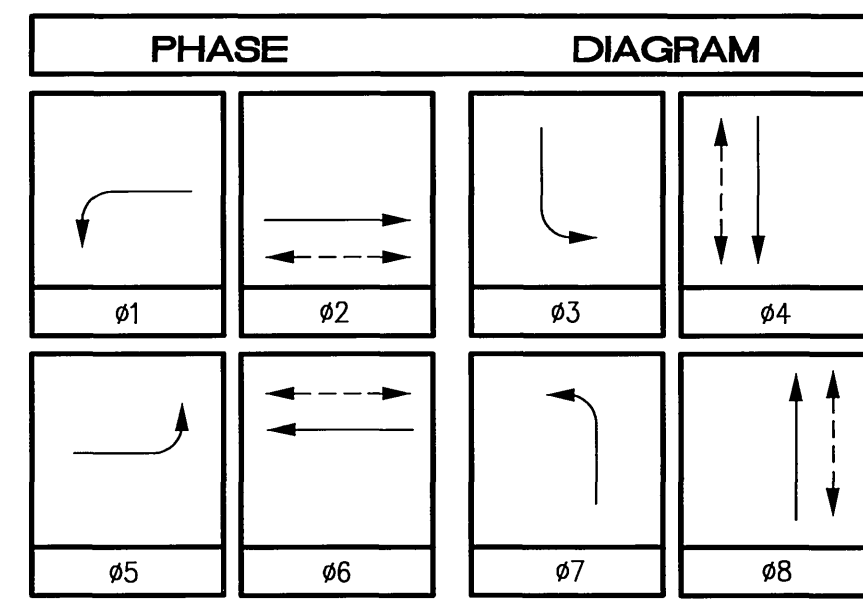
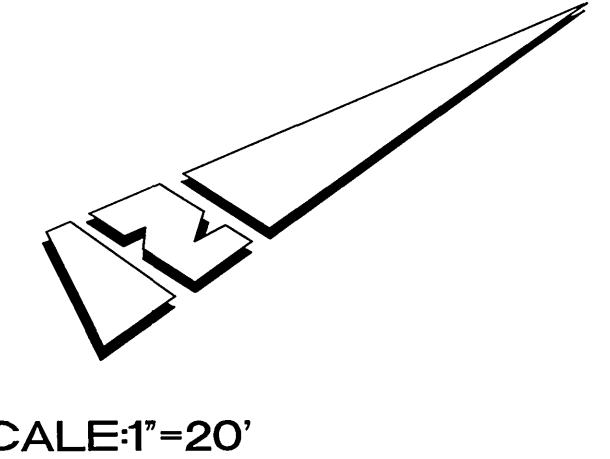
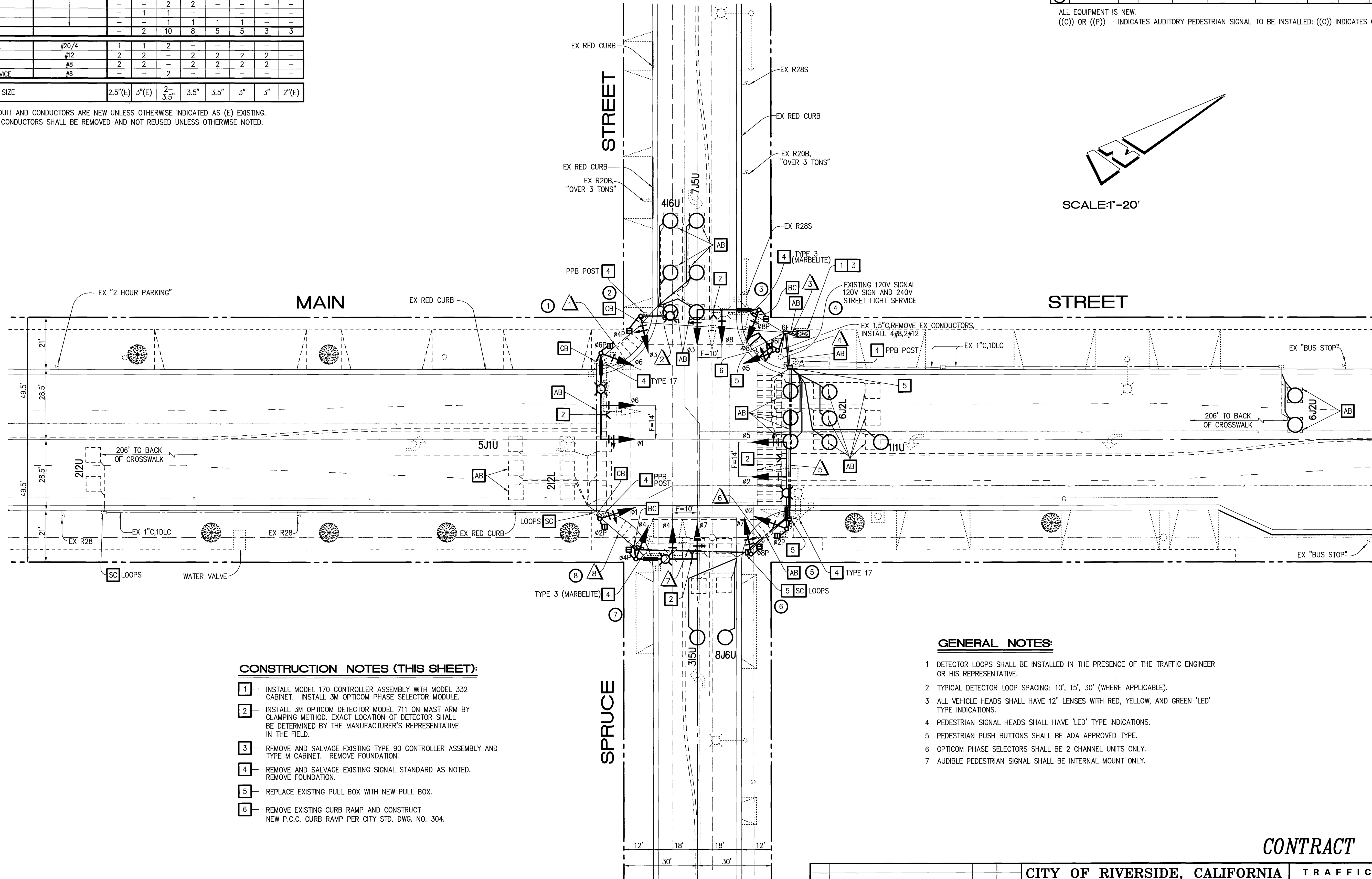


CONDUCTOR		TABLE							
CONTROL FUNCTION	CONDUCTORS	CONDUCTOR RUNS							
		1	2	3	4	5	6	7	8
VEHICLE & PEDESTRIAN HEADS, PEDESTRIAN PUSH BUTTONS, SPARES & COMMONS	12 CONDUCTOR IMSA	1	2	8	4	4	3	2	1
	3 CONDUCTOR IMSA	1	2	8	4	4	3	2	1
DETECTOR CABLE	#16/2	-	-	1	1	-	-	-	-
PHASE 1		-	-	2	2	2	2	2	2
PHASE 2		-	-	1	1	1	1	-	-
PHASE 3		-	-	1	1	-	-	-	-
PHASE 4		-	-	1	1	1	1	1	1
PHASE 5		-	-	2	2	-	-	-	-
PHASE 6		-	-	1	1	-	-	-	-
PHASE 7		-	-	1	1	-	-	-	-
PHASE 8		-	-	1	1	1	1	-	-
TOTALS		-	-	2	10	8	5	5	3
EVPE CABLE	#20/4	1	1	2	-	-	-	-	-
IISNS	#12	2	2	-	2	2	2	2	-
LUMINAIRES	#8	2	2	-	2	2	2	2	-
SIGNAL SERVICE	#8	-	-	2	-	-	-	-	-
CONDUIT SIZE		2.5"(E)	3"(E)	2-3.5"	3.5"	3.5"	3"	3"	2"(E)



POLE		SCHEDULE											
No.	TYPE	STANDARD				LUMINAIRE HPS	IISNS LEGEND	SIGNAL MOUNTING				PPB PHASE	REMARKS
		HGT.	SIG. M.A.	LUM. M.A.	VEHICLE			PED	AUDIBLE				
1	24-4-129	30'	35'	12'	250W	Spruce St 3700	MAS	MAS	SV-1-T	SP-1-T	((C))	ø4	
2	15	30'	-	12'	250W	-	-	SV-1-T	SP-1-T	((P))	ø6		
3	18-4-129	17'	25'	-	-	Main St 2300	MAS	MAS	SV-1-T	SP-1-T	((P))	ø6	
4	1-A	10'	-	-	-	-	-	TV-1-T	SP-1-T	((C))	ø8		
5	24-4-129	30'	35'	12'	250W	Spruce St 3600	MAS	MAS	SV-1-T	SP-1-T	((C))	ø8	
6	1-A	10'	-	-	-	-	-	TV-1-T	SP-1-T	((P))	ø2		
7	19-4-129	30'	25'	12'	250W	Main St 2400	MAS	MAS	SV-1-T	SP-1-T	((P))	ø2	
8	1-A	10'	-	-	-	-	-	TV-1-T	SP-1-T	((C))	ø4		

ALL EQUIPMENT IS NEW.
 ((C)) OR ((P)) - INDICATES AUDITORY PEDESTRIAN SIGNAL TO BE INSTALLED; ((C)) INDICATES CUCKOO SOUND; ((P)) INDICATES PEEP-PEEP SOUND.



SCALE: 1"=20'

CONSTRUCTION NOTES (THIS SHEET):

- INSTALL MODEL 170 CONTROLLER ASSEMBLY WITH MODEL 332 CABINET. INSTALL 3M OPTICOM PHASE SELECTOR MODULE.
- INSTALL 3M OPTICOM DETECTOR MODEL 711 ON MAST ARM BY CLAMPING METHOD. EXACT LOCATION OF DETECTOR SHALL BE DETERMINED BY THE MANUFACTURER'S REPRESENTATIVE IN THE FIELD.
- REMOVE AND SALVAGE EXISTING TYPE 90 CONTROLLER ASSEMBLY AND TYPE M CABINET. REMOVE FOUNDATION.
- REMOVE AND SALVAGE EXISTING SIGNAL STANDARD AS NOTED. REMOVE FOUNDATION.
- REPLACE EXISTING PULL BOX WITH NEW PULL BOX.
- REMOVE EXISTING CURB RAMP AND CONSTRUCT NEW P.C.C. CURB RAMP PER CITY STD. DWG. NO. 304.

GENERAL NOTES:

- DETECTOR LOOPS SHALL BE INSTALLED IN THE PRESENCE OF THE TRAFFIC ENGINEER OR HIS REPRESENTATIVE.
- TYPICAL DETECTOR LOOP SPACING: 10', 15', 30' (WHERE APPLICABLE).
- ALL VEHICLE HEADS SHALL HAVE 12" LENSES WITH RED, YELLOW, AND GREEN 'LED' TYPE INDICATIONS.
- PEDESTRIAN SIGNAL HEADS SHALL HAVE 'LED' TYPE INDICATIONS.
- PEDESTRIAN PUSH BUTTONS SHALL BE ADA APPROVED TYPE.
- OPTICOM PHASE SELECTORS SHALL BE 2 CHANNEL UNITS ONLY.
- AUDIBLE PEDESTRIAN SIGNAL SHALL BE INTERNAL MOUNT ONLY.



TRAFFIC No. 1575
 DATE: 6-8-04
 AGA Job No.: 134-006
 AGA File Name: MAINSPRUCE
 Print Date: 6/8/04
 Last Revision: 5/4/04

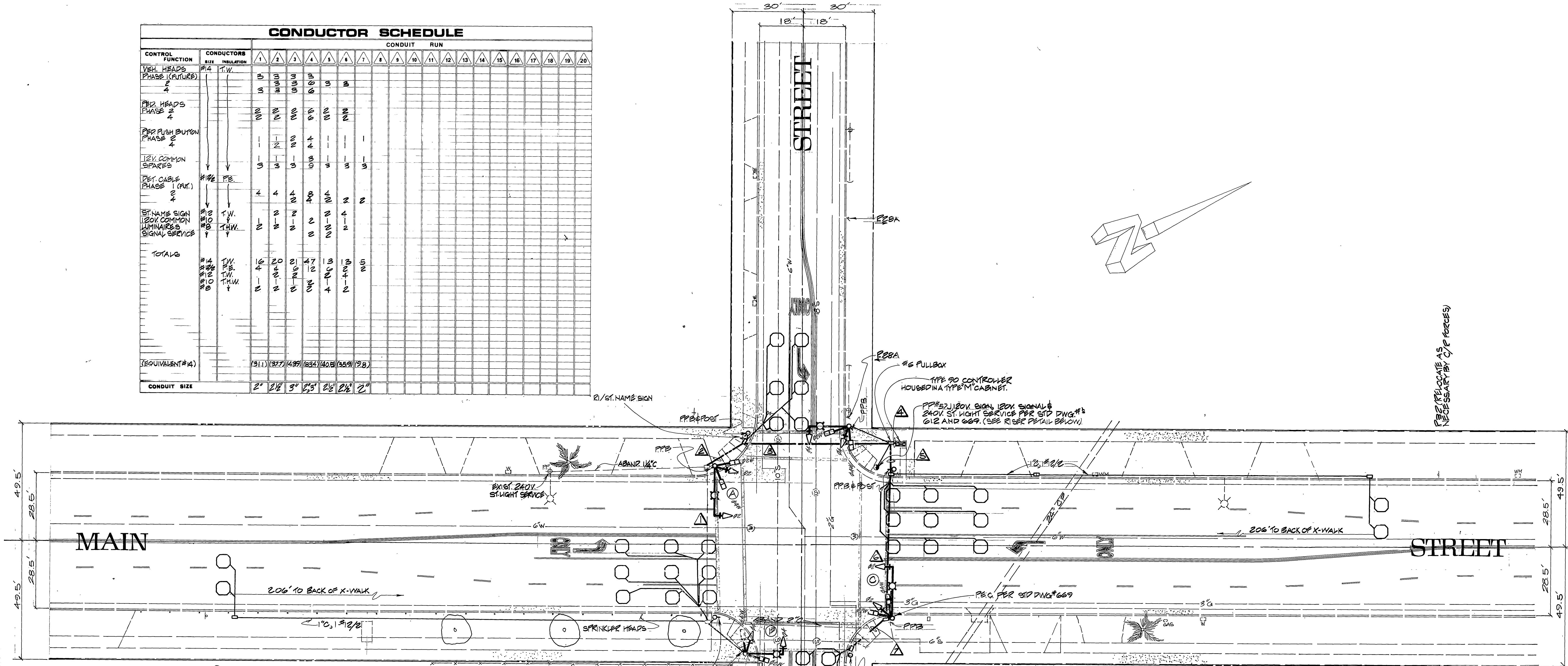
ALBERT GROVER & ASSOCIATES
 TRANSPORTATION CONSULTING ENGINEERS
 211 E. Imperial Hwy., Suite 208 Fullerton, CA 92835
 (714) 992-2900
 FAX 992-2883

CONTRACT TE-04-03

Underground Service Alert
 Call TOLL FREE
 1-800-227-2600
 TWO WORKING DAYS BEFORE YOU DIG

CITY OF RIVERSIDE, CALIFORNIA DEPARTMENT OF PUBLIC WORKS			TRAFFIC SIGNAL PLAN		ACCOUNT NO.
APPROVED BY: <i>Mark H. Miller</i> DATE: 6/10/04 PRINCIPAL ENGINEER			APPROVED BY: <i>Donna Bord</i> DATE: 6/14/04 CITY ENGINEER		X-150A SHEET 7 OF 9
DESIGNED BY: JAT DRAWN BY: DMS/TRB CHECKED BY: JAT			HORIZ. SCALE: 1"=20' VERT. SCALE: 1"= -		

CONTROL FUNCTION	CONDUCTORS	CONDUIT RUN																			
		1	2	3	4	5	6	7	8	9	10	11	12	13	14	15	16	17	18	19	20
VEH. HEADS PHASE 1 (FUTURE)	#4	5	3	3	3	3															
PER HEADS PHASE 2		3	3	3	3	3															
PER PUSH BUTTON PHASE 2		2	2	2	2	2															
12V. COMMON SPARES		3	3	3	3	3															
DET. CABLE PHASE 2 (FUT.)	#12	4	4	4	4	4															
ST. NAME SIGN 120V. COMMON LUMINAIRE SIGNAL SERVICE	#10	2	2	2	2	2															
TOTALS		16	20	21	21	21															
(EQUIVALENT #4)		(31.1)	(32.7)	(43.9)	(83.4)	(40.5)	(35.9)	(2.8)													
CONDUIT SIZE		2"	2 1/2"	3"	2 1/2"	2 1/2"	2 1/2"	2"													

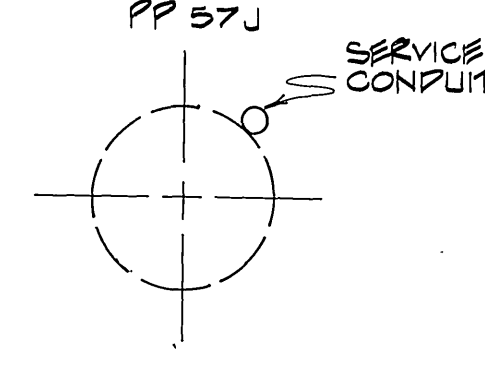


SEE LOCATIONS BY C/P FORCE

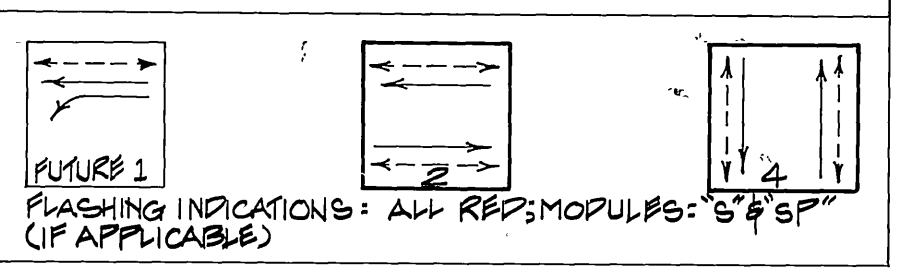
LOCATION	STANDARD	VEHICLE HEADS			PEDESTRIAN HEADS			LUMINAIRE	INT ILLUM STREET NAME SIGN	REMARKS
		HEAD	MOUNTING	BACK PLATE	HEAD	MOUNTING	PPR			
A	17-270 204/01A	W3C(12)	MAS	SVL-T	ZW2C	SPZ-T	250W	SPRUCES		
B	68110 C15	W3C(12)	MAS	SVL-T	ZW2C	SPZ-T	250W	Main		
C	17-270 204/01A	W3C(12)	MAS	SVL-T	ZW2C	SPZ-T	250W	SPRUCES		
D	68110 C15	W3C(12)	MAS	SVL-T	ZW2C	SPZ-T	250W	Main		

*X INDICATES HIGH INTENSITY ST. NAME SIGN

RISER DETAIL



PHASE DIAGRAM



CITY OF RIVERSIDE PUBLIC WORKS DEPARTMENT		TRAFFIC SIGNAL Main Street at Spruce Street	ACCOUNT NO. 15-550-513 X-150 SHEET 2 OF 3
APPROVED BY PRINCIPAL ENGINEER <i>[Signature]</i> 6/11	APPROVED BY PUBLIC WORKS DIRECTOR <i>[Signature]</i> 6/12/80	SCALE 1"=20'	
DESIGNED BY <i>[Signature]</i> DRAWN BY <i>[Signature]</i> CHECKED BY <i>[Signature]</i>	REVISIONS APPR DATE CHIEF P.W. ENGINEER PUBLIC UTILITIES	DATE 6/12/80	