

CONDUCTOR		TABLE							
AWG	CIRCUIT	RUNS							
		1	2	3	4	5	6	7	8
12-CSC	#1	3(N)	3(N)	3(N)	3(N)	3/3(N)	3	3	3
3-CSC	#2	-	-	-	-	3	-	-	-
	#3	-	-	-	-	3	3	3	-
	#4	-	-	-	-	3	6	-	-
	#5	3(N)	3(N)	3(N)	3(N)	3	-	-	-
	#6	-	-	-	-	3	-	-	-
	#7	-	-	-	-	3	-	-	-
	#8	-	-	-	-	3	-	-	-
	#2 PED	-	-	-	-	4	2	2	2
	#4 PED	-	-	-	-	2	2	2	-
	#6 PED	2(N)	2(N)	2(N)	2(N)	2	2	-	-
	#8 PED	-	-	-	-	2	4	2	-
	#2 PPB	-	-	-	-	1	1	1	-
	#4 PPB	1(N)	1(N)	1(N)	1(N)	1/1(N)	1	1	1
	#6 PPB	-	-	-	-	1	1	-	-
	#8 PPB	-	-	-	-	1	2	-	-
	PPB COMMON	1(N)	1(N)	1	1	2	1	1	1
	SPARES	3(N)	3(N)	3	3	6	3	3	3
	TOTAL	13	19	22	25	52	18	16	10

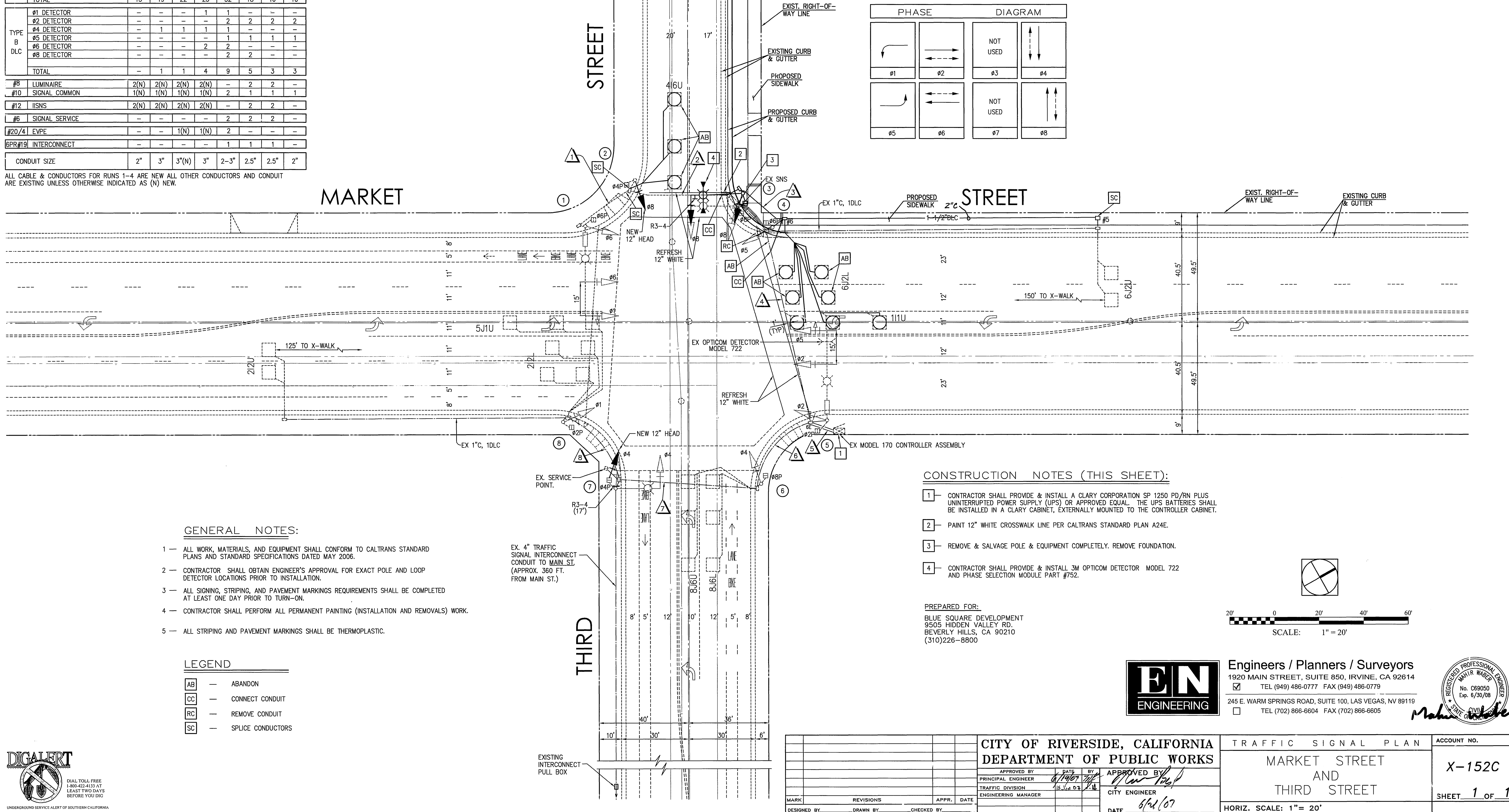
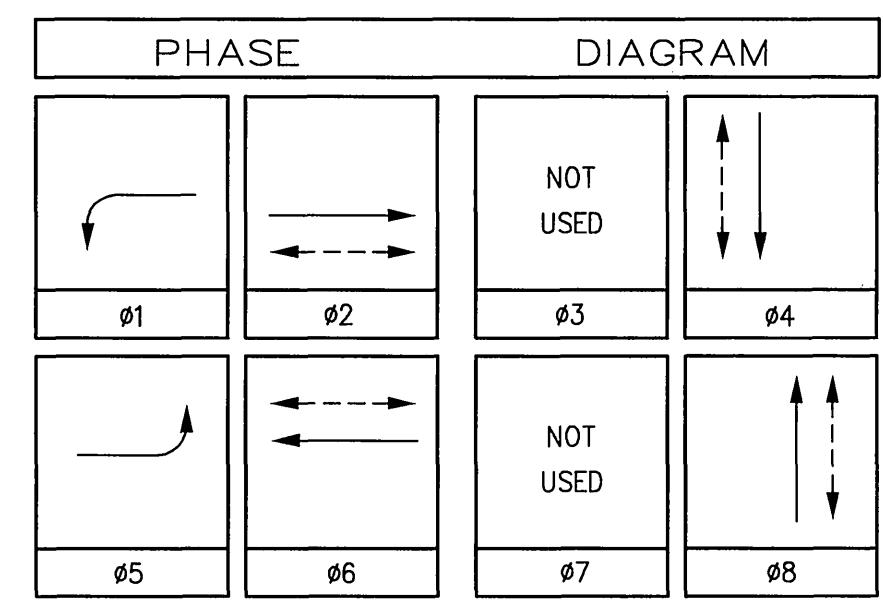
TYPE	B	DLC										
			1	2	3	4	5	6	7	8		
			#1 DETECTOR	-	-	-	1	-	-	-	-	-
			#2 DETECTOR	-	-	-	2	2	2	2	-	
			#4 DETECTOR	-	1	1	1	1	-	-	-	
			#5 DETECTOR	-	-	-	1	1	1	1	-	
			#6 DETECTOR	-	-	-	2	2	-	-	-	
			#8 DETECTOR	-	-	-	2	2	-	-	-	
			TOTAL	-	1	1	4	9	5	3	3	

#8	LUMINAIRE	2(N)	2(N)	2(N)	2(N)	-	2	2	-
#10	SIGNAL COMMON	1(N)	1(N)	1(N)	1(N)	2	1	1	1
#12	IISNS	2(N)	2(N)	2(N)	2(N)	-	2	2	-
#6	SIGNAL SERVICE	-	-	-	-	2	2	2	-
#20/4	EVPE	-	-	1(N)	1(N)	2	-	-	-
6PR#19	INTERCONNECT	-	-	-	-	1	1	1	-
	CONDUIT SIZE	2"	3"	3"(N)	3"	2-3"	2.5"	2.5"	2"

ALL CABLE & CONDUCTORS FOR RUNS 1-4 ARE NEW ALL OTHER CONDUCTORS AND CONDUIT ARE EXISTING UNLESS OTHERWISE INDICATED AS (N) NEW.

No.	TYPE	STANDARD				LUMINAIRE HPS	IISNS LEGEND	SCHEDULE				PPB PHASE	REMARKS
		HGT.	SIG. M.A.	LUM. M.A.	SIGNAL MOUNTING								
		VEHICLE						* PED	AUDIBLE				
1	26-4-80	30'	40'	15'	250W	Third	MAS	MAS	SV-1-T	SP-1-T	((P))	#4	
2	1-A	10'	-	-	-	-	-	-	TV-1-T	SP-1-T (N)	((C))	#6	
3	19-4-100 (N)	-	25' (N)	12' (N)	250W (N)	-	-	MAS (N)	SV-1-T (N)	SP-1-T (N)	((C))(N)	#6	MARKET ST/3200
4	1-A	10'	-	-	-	-	-	-	TV-1-T	SP-1-T	((P))	#8	
5	26-4-80	30'	40'	15'	250W	Third	MAS	MAS	SV-1-T	SP-1-T	((P))	#8	
6	1-A	10'	-	-	-	-	-	-	TV-1-T	SP-1-T	((C))	#2	
7	TC-7010	-	20'	10'	250W	-	-	MAS	SV-1-T	SP-1-T (N)	((C))	#2	
8	1-A	10'	-	-	-	-	-	-	TV-1-T	SP-1-T	((P))	#4	

ALL EQUIPMENT IS EXISTING UNLESS OTHERWISE INDICATED AS (N) NEW.
 ((C)) OR ((P)) - INDICATES AUDITORY PEDESTRIAN SIGNAL: ((C)) INDICATES CUCKOO SOUND; ((P)) INDICATES PEEP-PEEP SOUND.
 * POTHOLE MAST ARM POLE FOUNDATIONS PRIOR TO ORDERING POLES AND MAST ARMS.
 * CONTRACTOR SHALL REPLACE ALL EXISTING PEDESTRIAN INDICATIONS WITH L.E.D. COUNTDOWN TYPE.



GENERAL NOTES:

- ALL WORK, MATERIALS, AND EQUIPMENT SHALL CONFORM TO CALTRANS STANDARD PLANS AND STANDARD SPECIFICATIONS DATED MAY 2006.
- CONTRACTOR SHALL OBTAIN ENGINEER'S APPROVAL FOR EXACT POLE AND LOOP DETECTOR LOCATIONS PRIOR TO INSTALLATION.
- ALL SIGNING, STRIPING, AND PAVEMENT MARKINGS REQUIREMENTS SHALL BE COMPLETED AT LEAST ONE DAY PRIOR TO TURN-ON.
- CONTRACTOR SHALL PERFORM ALL PERMANENT PAINTING (INSTALLATION AND REMOVALS) WORK.
- ALL STRIPING AND PAVEMENT MARKINGS SHALL BE THERMOPLASTIC.

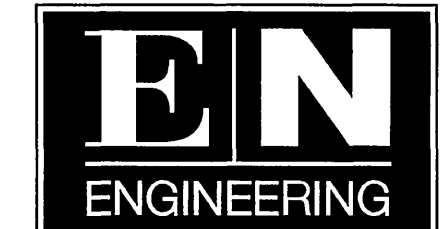
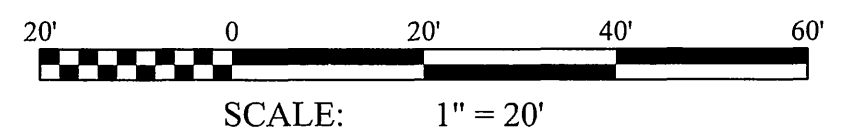
LEGEND

- AB - ABANDON
- CC - CONNECT CONDUIT
- RC - REMOVE CONDUIT
- SC - SPLICE CONDUCTORS

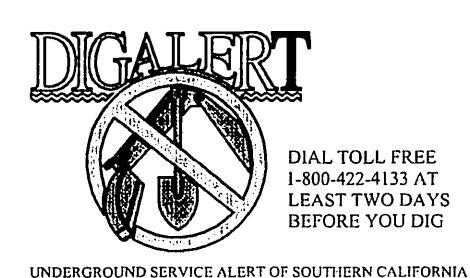
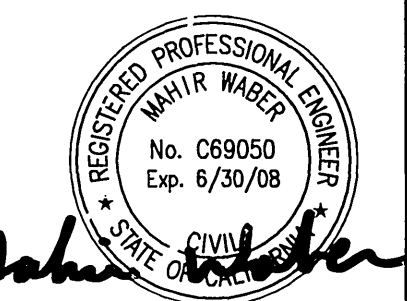
CONSTRUCTION NOTES (THIS SHEET):

- CONTRACTOR SHALL PROVIDE & INSTALL A CLARY CORPORATION SP 1250 PD/RN PLUS UNINTERRUPTED POWER SUPPLY (UPS) OR APPROVED EQUAL. THE UPS BATTERIES SHALL BE INSTALLED IN A CLARY CABINET, EXTERNALLY MOUNTED TO THE CONTROLLER CABINET.
- PAINT 12" WHITE CROSSWALK LINE PER CALTRANS STANDARD PLAN A24E.
- REMOVE & SALVAGE POLE & EQUIPMENT COMPLETELY. REMOVE FOUNDATION.
- CONTRACTOR SHALL PROVIDE & INSTALL 3M OPTICOM DETECTOR MODEL 722 AND PHASE SELECTION MODULE PART #752.

PREPARED FOR:
 BLUE SQUARE DEVELOPMENT
 9505 HIDDEN VALLEY RD.
 BEVERLY HILLS, CA 90210
 (310)226-8800



Engineers / Planners / Surveyors
 1920 MAIN STREET, SUITE 850, IRVINE, CA 92614
 TEL (949) 486-0777 FAX (949) 486-0779
 245 E. WARM SPRINGS ROAD, SUITE 100, LAS VEGAS, NV 89119
 TEL (702) 866-6604 FAX (702) 866-6605



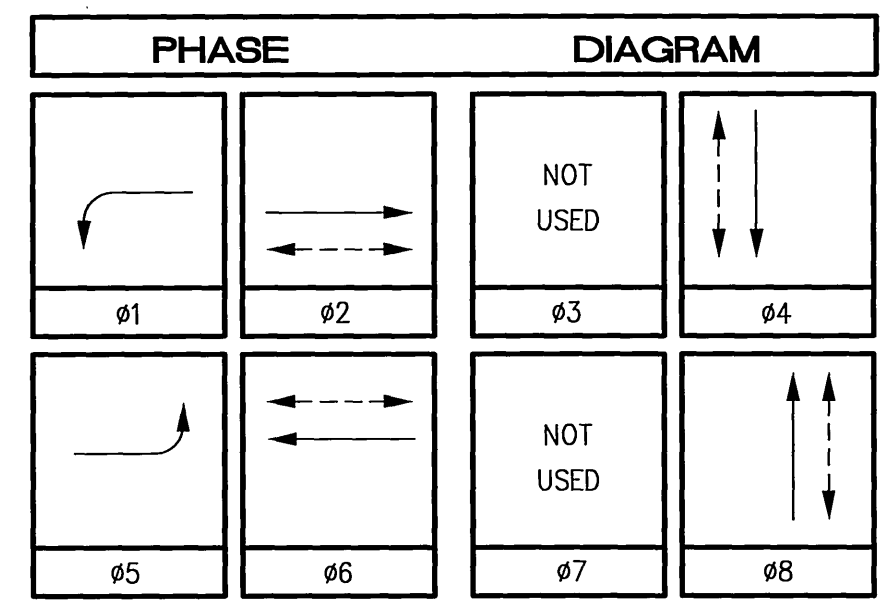
CITY OF RIVERSIDE, CALIFORNIA		TRAFFIC SIGNAL PLAN		ACCOUNT NO.
DEPARTMENT OF PUBLIC WORKS		MARKET STREET AND THIRD STREET		X-152C
APPROVED BY	DATE	APPROVED BY	DATE	SHEET 1 OF 1
PRINCIPAL ENGINEER	6/19/07	CITY ENGINEER	6/21/07	
TRAFFIC DIVISION	15 JUN 07			
ENGINEERING MANAGER				
DESIGNED BY	DRAWN BY	CHECKED BY		

HORIZ. SCALE: 1" = 20'

CONDUCTOR		TABLE							
AWG	CIRCUIT	RUNS							
		1	2	3	4	5	6	7	8
#14	#1	3(N)	3(N)	3(N)	3(N)	3/3(N)	3	3	3
	#2	-	-	-	-	3	3	3	-
	#4	-	-	-	-	3	3	3	-
	#5	-	-	-	3	3	-	-	-
	#6	3(N)	3(N)	3(N)	3(N)	-	-	-	-
	#8	-	-	-	3	3	-	-	-
	#2 PED	-	-	-	4	2	2	2	2
	#4 PED	-	2(N)	2(N)	2(N)	2/2(N)	2	2	-
	#6 PED	2(N)	2(N)	2(N)	2	2	-	-	-
	#8 PED	-	2	2	4	2	-	-	-
	#2 PPB	-	-	-	1	1	1	1	-
	#4 PPB	1(N)	1(N)	1(N)	1(N)	1/1(N)	1	1	1
	#6 PPB	-	1(N)	1	1	-	-	-	-
	#8 PPB	-	-	-	1	2	-	-	-
	PPB COMMON	1(N)	1(N)	1	1	2	1	1	1
	SPARES	3(N)	3(N)	3	3	6	3	3	3
	TOTAL	13	19	22	25	52	18	16	10

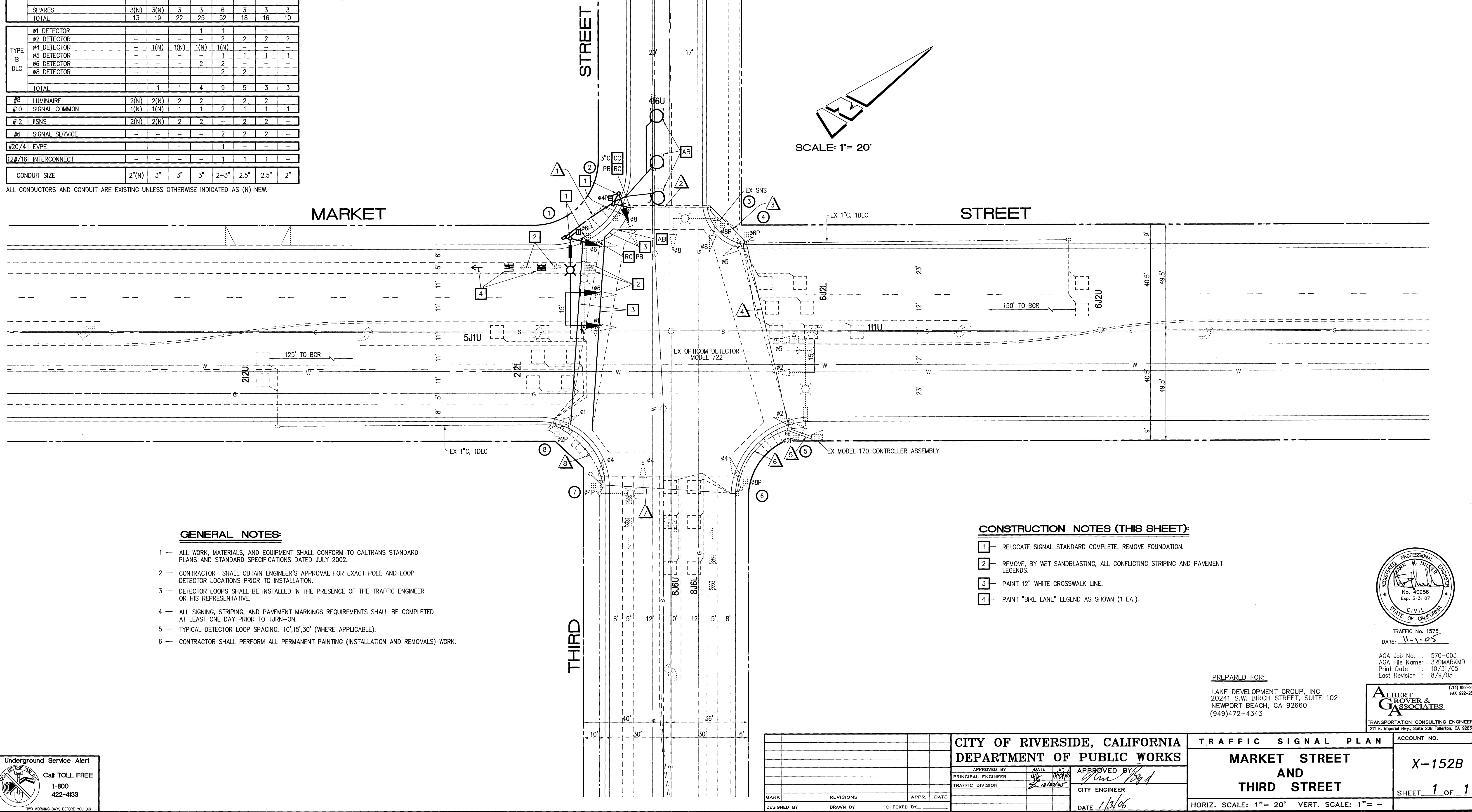
TYPE B DLC	#1 DETECTOR	-	-	-	1	1	-	-	-
	#2 DETECTOR	-	-	-	2	2	2	2	2
	#4 DETECTOR	-	1(N)	1(N)	1(N)	1(N)	-	-	-
	#5 DETECTOR	-	-	-	1	1	1	1	1
	#6 DETECTOR	-	-	-	2	2	-	-	-
	#8 DETECTOR	-	-	-	2	2	-	-	-
	TOTAL	-	1	1	4	9	5	3	3
	#8 LUMINAIRE	2(N)	2(N)	2	2	-	2	2	-
#10 SIGNAL COMMON	1(N)	1(N)	1	1	2	1	1	1	
#12 ISNS	2(N)	2(N)	2	2	-	2	2	-	
#6 SIGNAL SERVICE	-	-	-	-	2	2	2	-	
#20/41 EVPE	-	-	-	-	1	-	-	-	
12#/16 INTERCONNECT	-	-	-	-	1	1	1	-	
CONDUIT SIZE	2"(N)	3"	3"	3"	2-3"	2.5"	2.5"	2"	

ALL CONDUCTORS AND CONDUIT ARE EXISTING UNLESS OTHERWISE INDICATED AS (N) NEW.



POLE		SCHEDULE										
No.	TYPE	STANDARD		LUMINAIRE HPS	ISNS LEGEND	SIGNAL MOUNTING				PPB PHASE	REMARKS	
		HGT.	SIG. M.A.			VEHICLE	PED	AUDIBLE				
1	26-4-80(R)	30'	40'(R)	15'(R)	250W(R)	Third ST ₃₆₀₀ (R)	MAS(R)	MAS(R)	SV-1-T(R)	SP-1-T(R)	((P)) (R)	#4(R)
2	1-A(R)	10'	-	-	-	-	-	-	TV-1-T(R)	SP-1-T(R)	((C)) (R)	#6(R)
3	68J10	-	20'	10'	250W	-	-	MAS	SV-1-T	SP-1-T	((C))	#6
4	1-A	10'	-	-	-	-	-	-	TV-1-T	SP-1-T	((P))	#8
5	26-4-80	30'	40'	15'	250W	Third ST ₃₇₀₀	MAS	MAS	SV-1-T	SP-1-T	((P))	#8
6	1-A	10'	-	-	-	-	-	-	TV-1-T	SP-1-T	((C))	#2
7	TC-7010	-	20'	10'	250W	-	-	MAS	SV-1-T	SP-1-T	((C))	#2
8	1-A	10'	-	-	-	-	-	-	TV-1-T	SP-1-T	((P))	#4

ALL EQUIPMENT IS EXISTING UNLESS OTHERWISE INDICATED AS (R) RELOCATE.
 ((C)) OR ((P)) - INDICATES AUDITORY PEDESTRIAN SIGNAL; ((C)) INDICATES CUCKOO SOUND; ((P)) INDICATES PEEP-PEEP SOUND.



- GENERAL NOTES:**
- ALL WORK, MATERIALS, AND EQUIPMENT SHALL CONFORM TO CALTRANS STANDARD PLANS AND STANDARD SPECIFICATIONS DATED JULY 2002.
 - CONTRACTOR SHALL OBTAIN ENGINEER'S APPROVAL FOR EXACT POLE AND LOOP DETECTOR LOCATIONS PRIOR TO INSTALLATION.
 - DETECTOR LOOPS SHALL BE INSTALLED IN THE PRESENCE OF THE TRAFFIC ENGINEER OR HIS REPRESENTATIVE.
 - ALL SIGNING, STRIPING, AND PAVEMENT MARKINGS REQUIREMENTS SHALL BE COMPLETED AT LEAST ONE DAY PRIOR TO TURN-ON.
 - TYPICAL DETECTOR LOOP SPACING: 10', 15', 30' (WHERE APPLICABLE).
 - CONTRACTOR SHALL PERFORM ALL PERMANENT PAINTING (INSTALLATION AND REMOVALS) WORK.

- CONSTRUCTION NOTES (THIS SHEET):**
- RELOCATE SIGNAL STANDARD COMPLETE. REMOVE FOUNDATION.
 - REMOVE, BY WET SANDBLASTING, ALL CONFLICTING STRIPING AND PAVEMENT LEGENDS.
 - PAINT 12" WHITE CROSSWALK LINE.
 - PAINT "BIKE LANE" LEGEND AS SHOWN (1 EA.).



TRAFFIC No. 1575
 DATE: 11-1-05
 AGA Job No. : 570-003
 AGA File Name: 3RDMARKMD
 Print Date : 10/31/05
 Last Revision : 8/9/05

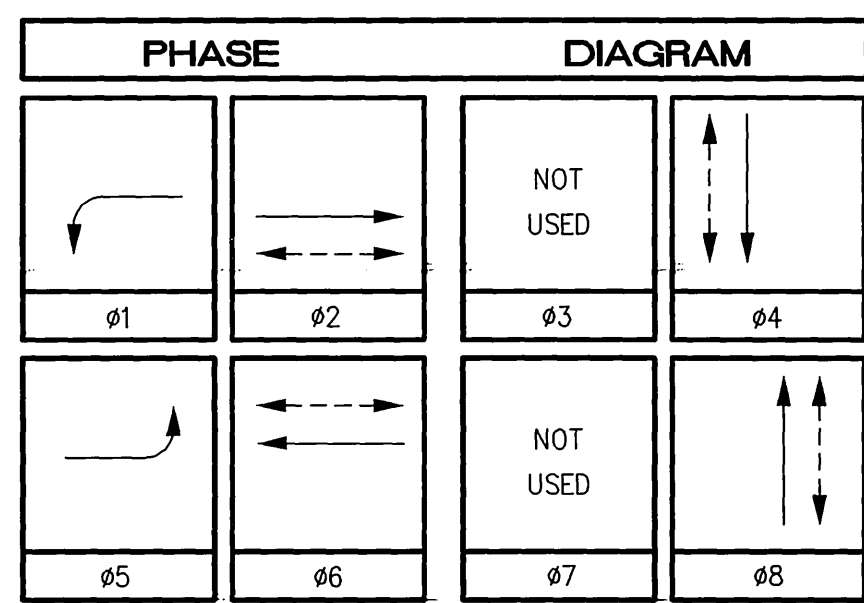
PREPARED FOR:
 LAKE DEVELOPMENT GROUP, INC
 20241 S.W. BIRCH STREET, SUITE 102
 NEWPORT BEACH, CA 92660
 (949)472-4343



CITY OF RIVERSIDE, CALIFORNIA DEPARTMENT OF PUBLIC WORKS		TRAFFIC SIGNAL PLAN MARKET STREET AND THIRD STREET		ACCOUNT NO. X-152B
APPROVED BY PRINCIPAL ENGINEER TRAFFIC DIVISION	DATE 11/1/05	APPROVED BY CITY ENGINEER	DATE 1/3/06	SHEET 1 OF 1
MARK DESIGNED BY	REVISIONS	APPR. DATE	CHECKED BY	HORIZ. SCALE: 1"= 20' VERT. SCALE: 1"= -

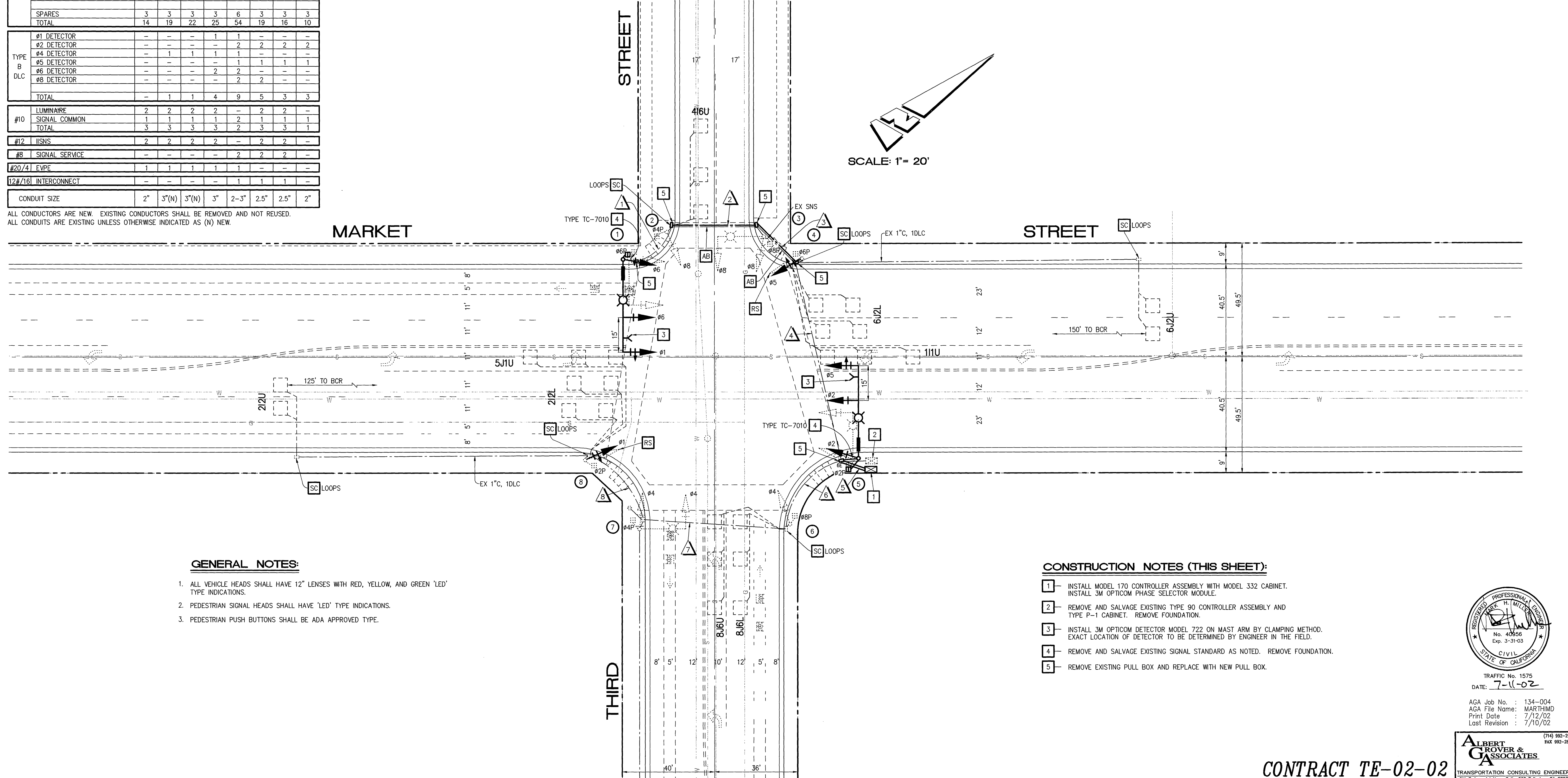
CONDUCTOR		TABLE							
AWG	CIRCUIT	RUNS							
		1	2	3	4	5	6	7	8
#14	#1	3	3	3	3	6	3	3	3
	#2	-	3	3	3	3	-	-	-
	#4	-	-	-	-	3	-	-	-
	#5	-	-	-	3	6	-	-	-
	#6	-	-	-	-	3	3	3	-
	#8	-	-	-	-	4	2	2	-
	#2 PED	3	3	3	3	3	-	-	-
	#4 PED	-	2	2	2	4	2	2	-
	#6 PED	2	2	2	2	2	-	-	-
	#8 PED	-	-	2	2	4	2	-	-
	#2 PPB	-	-	-	-	1	1	1	-
	#4 PPB	1	1	1	1	2	1	1	-
	#6 PPB	1	1	1	1	1	-	-	-
	#8 PPB	-	-	1	1	2	1	-	-
	PPB COMMON	1	1	1	1	2	1	1	-
	SPARES	3	3	3	3	6	3	3	-
	TOTAL	14	19	22	25	54	19	16	10
TYPE B DLC	#1 DETECTOR	-	-	-	1	1	-	-	-
	#2 DETECTOR	-	-	-	-	2	2	2	-
	#4 DETECTOR	-	1	1	1	1	-	-	-
	#5 DETECTOR	-	-	-	-	1	1	1	-
	#6 DETECTOR	-	-	-	2	2	-	-	-
	#8 DETECTOR	-	-	-	-	2	2	-	-
	TOTAL	-	1	1	4	9	5	3	3
#10	LUMINAIRE	2	2	2	2	-	2	2	-
	SIGNAL COMMON	1	1	1	1	2	1	1	1
	TOTAL	3	3	3	3	2	3	3	1
#12	IISNS	2	2	2	2	-	2	2	-
#8	SIGNAL SERVICE	-	-	-	-	2	2	2	-
#20/4	EVPE	1	1	1	1	1	-	-	-
12#/16	INTERCONNECT	-	-	-	-	1	1	1	-
CONDUIT SIZE		2"	3"(N)	3"(N)	3"	2-3"	2.5"	2.5"	2"

ALL CONDUCTORS ARE NEW. EXISTING CONDUCTORS SHALL BE REMOVED AND NOT REUSED.
 ALL CONDUITS ARE EXISTING UNLESS OTHERWISE INDICATED AS (N) NEW.



		POLE					SCHEDULE					
No.	TYPE	STANDARD			LUMINAIRE	ISNS	SIGNAL MOUNTING			PPB	REMARKS	
		HGT.	SIG. M.A.	LUM. M.A.			VEHICLE	PED	AUDIBLE			PHASE
1	26-4-80(N)	30'	40'(N)	15'(N)	250W(R)	Third St 3800(N)	MAS(N)	MAS(R)	SV-1-T(N)	SP-1-T(R)	((C)) (N)	#4(N)
2	1-A	10'	-	-	-	-	-	-	TV-1-T	SP-1-T	((C)) (N)	#6
3	68J10	-	20'	10'	250W	-	-	MAS	SV-1-T	SP-1-T	((C)) (N)	#6
4	1-A	10'	-	-	-	-	-	-	TV-1-T(N)	SP-1-T	((P)) (N)	#8
5	26-4-80(N)	30'	40'(N)	15'(N)	250W(R)	Third St 3700(N)	MAS(N)	MAS(R)	SV-1-T(N)	SP-1-T(R)	((P)) (N)	#8(N)
6	1-A	10'	-	-	-	-	-	-	TV-1-T	SP-1-T	((C)) (N)	#2
7	TC-7010	-	20'	10'	250W	-	-	MAS	SV-1-T	SP-1-T	((C)) (N)	#2
8	1-A	10'	-	-	-	-	-	-	TV-1-T(N)	SP-1-T	((P)) (N)	#4

ALL EQUIPMENT IS EXISTING UNLESS OTHERWISE INDICATED AS (N) NEW, (R) RELOCATE.
 ((C)) OR ((P)) - INDICATES AUDITORY PEDESTRIAN SIGNAL TO BE INSTALLED; ((C)) INDICATES CUCKOO SOUND; ((P)) INDICATES PEEP-PEEP SOUND.



GENERAL NOTES:

- ALL VEHICLE HEADS SHALL HAVE 12" LENSES WITH RED, YELLOW, AND GREEN 'LED' TYPE INDICATIONS.
- PEDESTRIAN SIGNAL HEADS SHALL HAVE 'LED' TYPE INDICATIONS.
- PEDESTRIAN PUSH BUTTONS SHALL BE ADA APPROVED TYPE.

CONSTRUCTION NOTES (THIS SHEET):

- INSTALL MODEL 170 CONTROLLER ASSEMBLY WITH MODEL 332 CABINET. INSTALL 3M OPTICOM PHASE SELECTOR MODULE.
- REMOVE AND SALVAGE EXISTING TYPE 90 CONTROLLER ASSEMBLY AND TYPE P-1 CABINET. REMOVE FOUNDATION.
- INSTALL 3M OPTICOM DETECTOR MODEL 722 ON MAST ARM BY CLAMPING METHOD. EXACT LOCATION OF DETECTOR TO BE DETERMINED BY ENGINEER IN THE FIELD.
- REMOVE AND SALVAGE EXISTING SIGNAL STANDARD AS NOTED. REMOVE FOUNDATION.
- REMOVE EXISTING PULL BOX AND REPLACE WITH NEW PULL BOX.



TRAFFIC No. 1576
 DATE: 7-11-02
 AGA Job No. : 134-004
 AGA File Name: MARTHMD
 Print Date : 7/12/02
 Last Revision : 7/10/02

CONTRACT TE-02-02

**CITY OF RIVERSIDE, CALIFORNIA
 DEPARTMENT OF PUBLIC WORKS**

TRAFFIC SIGNAL PLAN

**MARKET STREET
 AND
 THIRD STREET**

ACCOUNT NO.

X-152A

SHEET 6 OF 10

MARK	REVISIONS	APPR.	DATE

APPROVED BY	DATE	BY
Principal Engineer	8/23/02	VR
Inspection	8/15/02	ZB
Traffic Division Chief P. W. Engineer	8/16/02	303
Public Utilities	8/16/02	303

HORIZ. SCALE: 1" = 20' VERT. SCALE: 1" = -



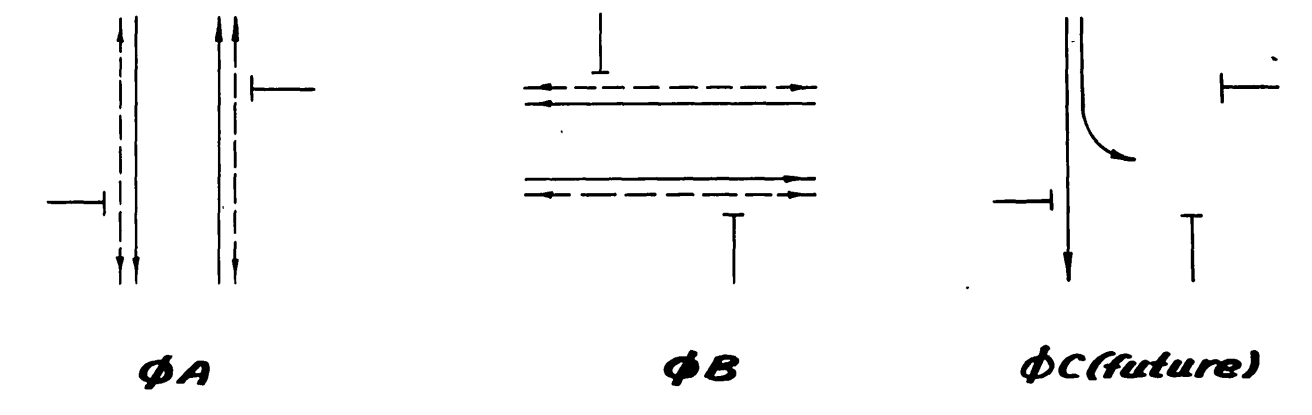
ALBERT GROVER & ASSOCIATES
 TRANSPORTATION CONSULTING ENGINEERS
 211 E. Imperial Hwy., Suite 208 Fullerton, CA 92835
 (714) 952-2990
 FAX 952-2983

Equipment Equipment

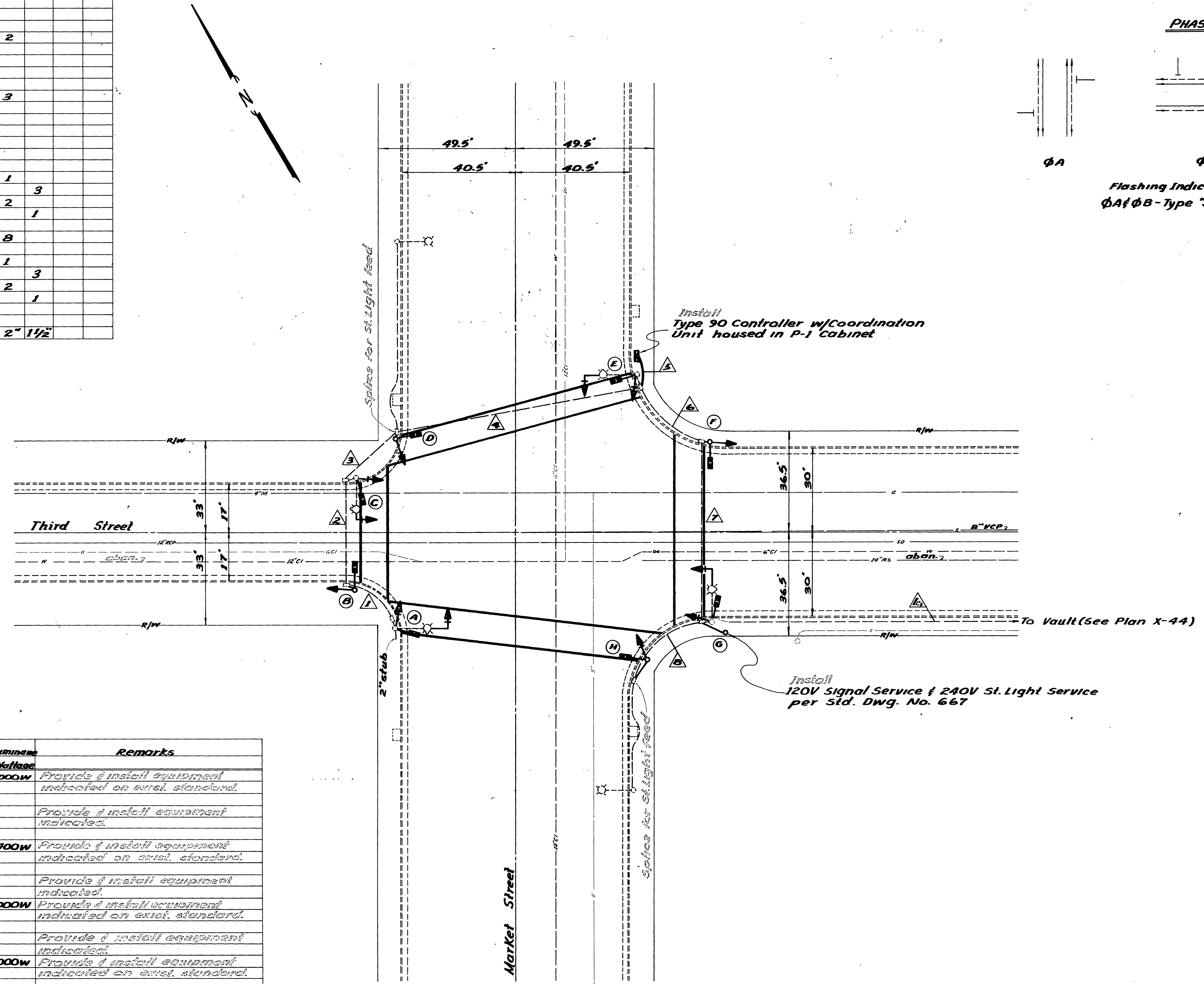
Control Function	Conductors Size/Insulation	Conduit Run												
		1	2	3	4	5	6	7	8	ks	△			
Vehicle Heads	#14 T.W.													
φA		3	3	3	3	6	3	3	3					
φB			3	3	3	6	3	3						
Ped. Heads														
φAw			2	2	2	4	2	2						
φBw			2	2	2	4	2	2	2					
PPB's(future)														
spares		3	3	3	3	3	3	3	3					
Det. Cable(fut.)														
12V Common	#12 T.W.													
120V Common	#10	1	1	1	1	2	1	1	1					
Signal Service	#8					2	2	2		3				
Luminaires	T.H.W.	2	2	2	2		2	2	2					
Interconnect	#12 R.E.					1	1	1		1				
Totals	#14 T.W.	8	13	13	13	23	13	13	8					
	#12													
	#10	1	1	1	1	2	1	1	1					
	#8					2	2	2		3				
	T.H.W.	2	2	2	2		2	2	2					
	#12 R.E.					1	1	1		1				
Conduit Size		2"	2"	2"	3"	3"	2 1/2"	2 1/2"	2"	1 1/2"				

System shall have new conductors.

PHASE DIAGRAM



Flashing Indication: All Red
φA φB - Type "SP" Modules



Equipment Schedule

Location	Standard	Vehicle Equipment			Ped. Equip.			Luminaires	Remarks
		Heads	Mtg.'s	Back Splice	Low. Heads	Mtg.'s	PPB's		
A	TC-7010	1W3C(12)	M-2	1				1000W	Provide & install equipment indicated on exist. standard.
		1W3C	B-1	1	1W2C	W-O			
B	Type I	1W3C	A-2		1W2C	W-O			Provide & install equipment indicated.
C	68J10 G15	1W3C(12)	M-2	1				400W	Provide & install equipment indicated on exist. standard.
		1W3C	B-1	1	1W2C	W-O			
D	Type I	1W3C	A-2	1	1W2C	W-O			Provide & install equipment indicated.
E	TC-7010	1W3C(12)	M-2	1				1000W	Provide & install equipment indicated on exist. standard.
		1W3C	B-1	1	1W2C	W-O			
F	Type I	1W3C	A-2		1W2C	W-O			Provide & install equipment indicated.
G	TC-7010	1W3C(12)	M-2	1				1000W	Provide & install equipment indicated on exist. standard.
		1W3C	B-1	1	1W2C	W-O			
H	Type I	1W3C	A-2	1	1W2C	W-O			Provide & install equipment indicated.

Type I standards are City Furnished and shall be install by the contractor

CONTRACT TE-73-1

CITY OF RIVERSIDE, CALIFORNIA PUBLIC WORKS DEPARTMENT		TRAFFIC SIGNALS		ACCOUNT No. 30-476-320-7
APPROVED BY: [Signature]		APPROVED BY: [Signature]		DRAWING NUMBER
PRINCIPAL ENGINEER		DIRECTOR OF PUBLIC WORKS		X-152
PARK DEPARTMENT		DATE: 11-23-72		SHEET 2 OF 5
TRAFFIC DIVISION		DATE: 11-23-72		
CHIEF PUB. WKS. ENGR.		DATE: 11-23-72		
REVISIONS		DATE: 11-23-72		
DRAWN BY: JMM		CHECKED BY: [Signature]		SCALE: 1" = 20'