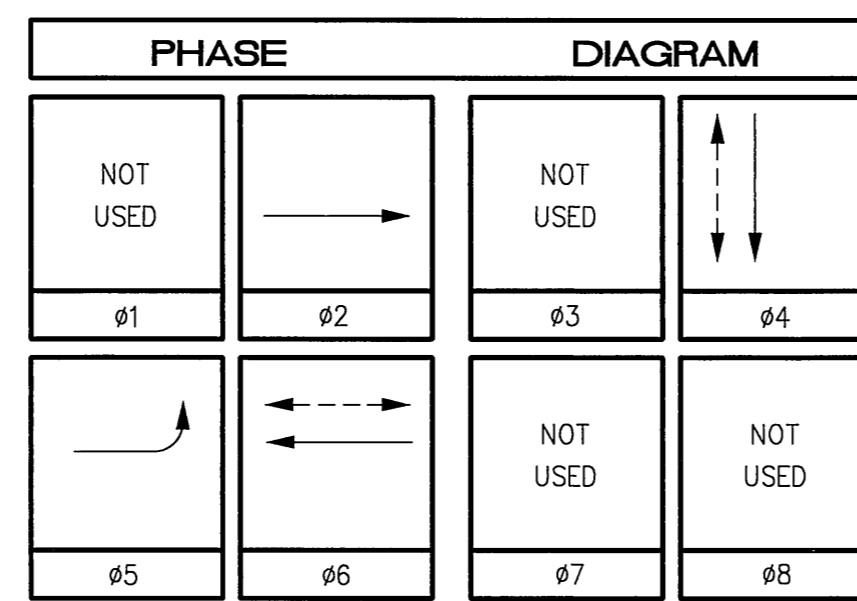
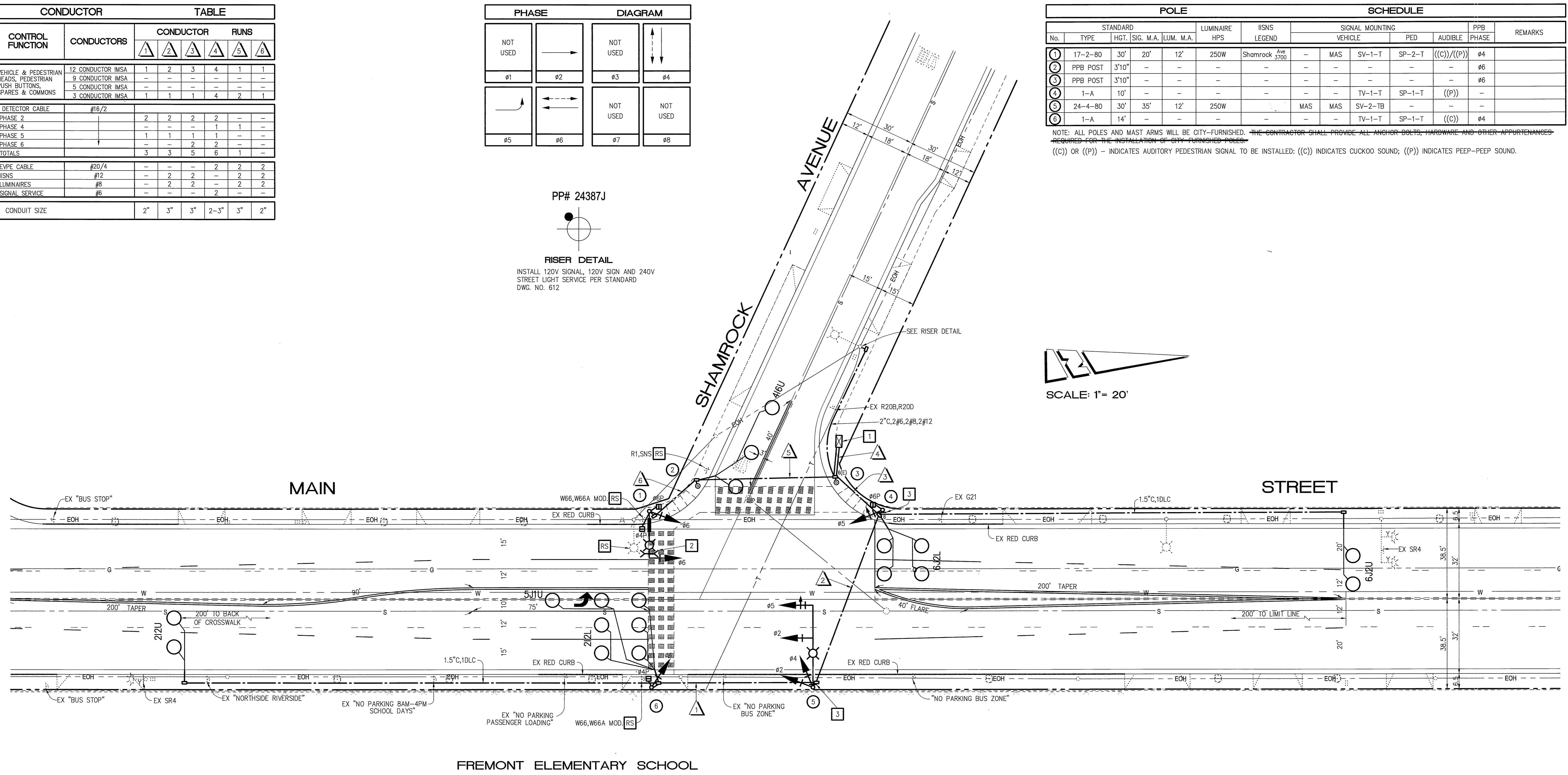
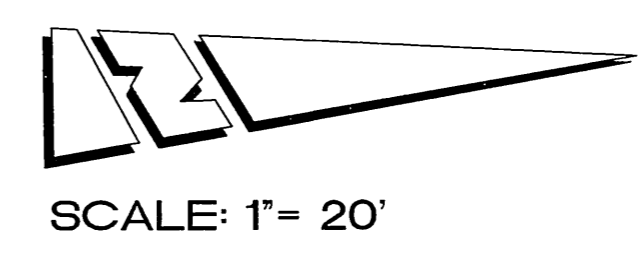
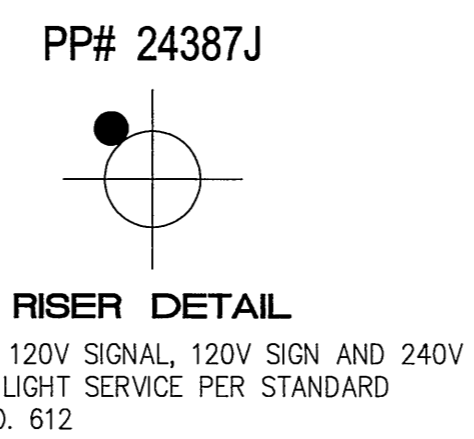


CONDUCTOR		TABLE					
CONTROL FUNCTION	CONDUCTORS	CONDUCTOR		RUNS		1	1
		1	2	3	4		
VEHICLE & PEDESTRIAN HEADS, PEDESTRIAN PUSH BUTTONS, SPARES & COMMONS	12 CONDUCTOR IMSA	1	2	3	4	1	1
	9 CONDUCTOR IMSA	-	-	-	-	-	-
	5 CONDUCTOR IMSA	-	-	-	-	-	-
DETECTOR CABLE	#16/2	1	1	1	4	2	1
PHASE 2		2	2	2	2	-	-
PHASE 4		-	-	-	1	1	-
PHASE 5		1	1	1	1	-	-
PHASE 6		-	-	2	2	-	-
TOTALS		3	3	5	6	1	-
EVPE CABLE	#20/4	-	-	-	2	2	2
IISNS	#12	-	2	2	-	2	2
LUMINAIRES	#8	-	2	2	-	2	2
SIGNAL SERVICE	#6	-	-	-	2	-	-
CONDUIT SIZE		2"	3"	3"	2-3"	3"	2"



POLE		SCHEDULE											
No.	TYPE	STANDARD				LUMINAIRE	IISNS	SIGNAL MOUNTING				PPB	REMARKS
		HGT.	SIG. M.A.	LUM. M.A.	HPS			VEHICLE	PED	AUDIBLE	PHASE		
1	17-2-80	30'	20'	12'	250W	Shamrock Ave 3700	-	MAS	SV-1-T	SP-2-T	((C))/((P))	φ4	
2	PPB POST	3'10"	-	-	-	-	-	-	-	-	-	φ6	
3	PPB POST	3'10"	-	-	-	-	-	-	-	-	-	φ6	
4	1-A	10'	-	-	-	-	-	TV-1-T	SP-1-T	((P))	-	-	
5	24-4-80	30'	35'	12'	250W	MAS	MAS	SV-2-TB	-	-	-	-	
6	1-A	14'	-	-	-	-	-	TV-1-T	SP-1-T	((C))	φ4		

NOTE: ALL POLES AND MAST ARMS WILL BE CITY-FURNISHED. THE CONTRACTOR SHALL PROVIDE ALL ANCHOR BOLTS, HARDWARE AND OTHER APPURTENANCES REQUIRED FOR THE INSTALLATION OF CITY-FURNISHED POLES.  
 ((C)) OR ((P)) - INDICATES AUDITORY PEDESTRIAN SIGNAL TO BE INSTALLED; ((C)) INDICATES CUCKOO SOUND; ((P)) INDICATES PEEP-PEEP SOUND.



- GENERAL NOTES:**
- DETECTOR LOOPS SHALL BE INSTALLED IN THE PRESENCE OF THE TRAFFIC ENGINEER OR HIS REPRESENTATIVE.
  - ALL SIGNING, STRIPING, AND PAVEMENT MARKINGS REQUIREMENTS SHALL BE COMPLETED AT LEAST ONE DAY PRIOR TO TURN-ON.
  - TYPICAL DETECTOR LOOP SPACING: 10', 15', 30' (WHERE APPLICABLE).
  - PAVEMENT DELINEATION SHOWN HEREON IS FOR REFERENCE ONLY. CITY FORCES SHALL PERFORM ALL PERMANENT PAINTING (INSTALLATION AND REMOVALS) WORK.
  - ALL VEHICLE HEADS SHALL HAVE 12" LENSES WITH RED, YELLOW, AND GREEN 'LED' TYPE INDICATIONS.
  - PEDESTRIAN SIGNAL HEADS SHALL HAVE 'LED' TYPE INDICATIONS.
  - PEDESTRIAN PUSH BUTTONS SHALL BE ADA APPROVED TYPE.

- CONSTRUCTION NOTES (THIS SHEET):**
- INSTALL CITY-FURNISHED MODEL 170 CONTROLLER ASSEMBLY WITH MODEL 332 CABINET. INSTALL 3M OPTICOM PHASE SELECTOR MODULE.
  - INSTALL 3M OPTICOM DETECTOR MODEL 722 ON MAST ARM BY CLAMPING METHOD. EXACT LOCATION OF DETECTOR TO BE DETERMINED BY ENGINEER IN THE FIELD.
  - INSTALL R96 SIGN.

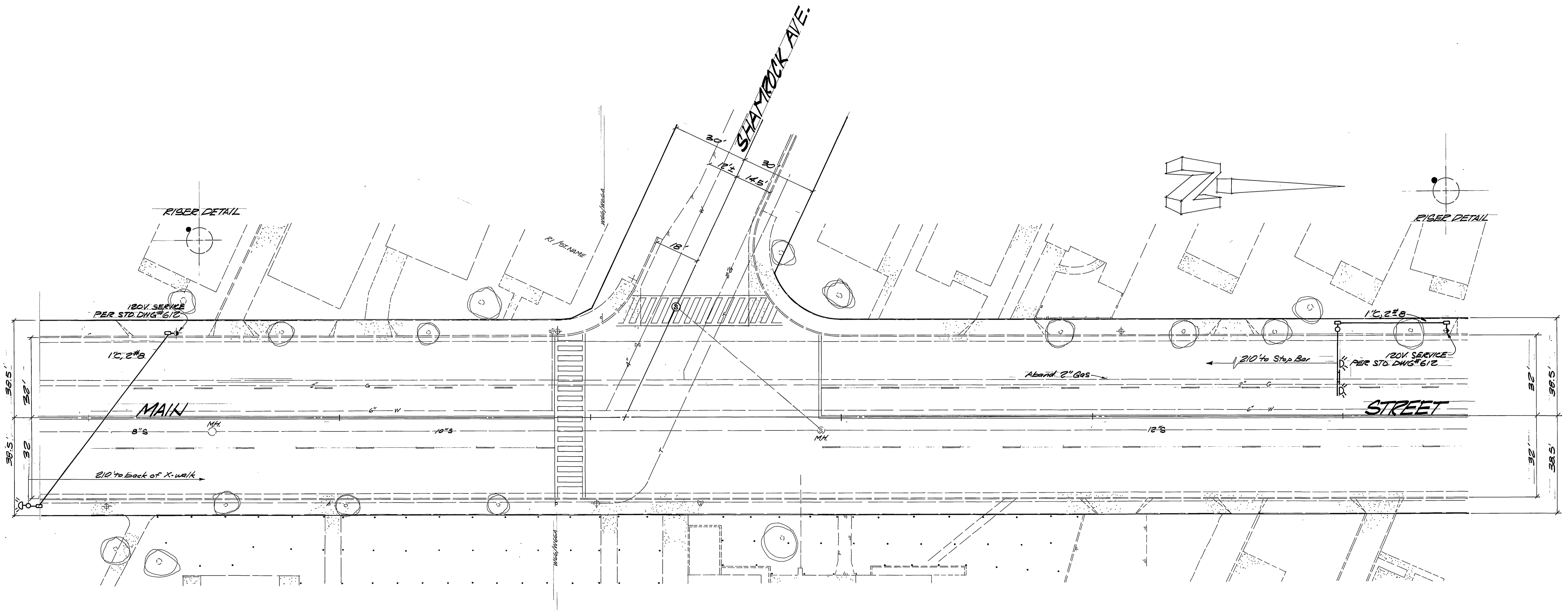


TRAFFIC No. 1575  
 DATE: 6-14-01  
 AGA Job No. : 134-003  
 AGA File Name: MAISHASG  
 Print Date : 6/14/01  
 Last Revision : 6/14/01

**ALBERT GROVER & ASSOCIATES**  
 TRANSPORTATION CONSULTING ENGINEERS  
 211 E. Imperial Hwy., Suite 208 Fullerton, CA 92835  
 (714) 992-2900  
 FAX 992-2883

Underground Service Alert  
 Call: TOLL FREE  
 1-800  
 227-2600  
 TWO WORKING DAYS BEFORE YOU DIG

CITY OF RIVERSIDE, CALIFORNIA DEPARTMENT OF PUBLIC WORKS				TRAFFIC SIGNAL PLAN		ACCOUNT NO.
APPROVED BY	DATE	BY	APPROVED BY	X-153		
PRINCIPAL ENGINEER	8/14/01	[Signature]	PUBLIC WORKS DIRECTOR	SHEET ___ OF ___		
INSPECTION	8/14/01	[Signature]		HORIZ. SCALE: 1" = 20' VERT. SCALE: 1" = -		
TRAFFIC DIVISION	8/14/01	[Signature]				
CHIEF P. W. ENGINEER	8/14/01	[Signature]				
PUBLIC UTILITIES	8/20/01	[Signature]				
DESIGNED BY	DRAWN BY	CHECKED BY	DATE			



REF. DWG'S R-966

<b>CITY OF RIVERSIDE</b> <b>PUBLIC WORKS DEPARTMENT</b>		<b>FLASHING BEACON</b> <b>MAIN STREET</b> <b>AT</b> <b>SHAMROCK AVENUE</b>		ACCOUNT NO. 3057639007 <b>X-153</b> SHEET ____ OF ____
APPROVED BY PRINCIPAL ENGINEER (W) <i>[Signature]</i> PARK DEPARTMENT TRAFFIC DIVISION CHIEF P. W. ENGINEER DESIGNED BY <i>[Signature]</i> DRAWN BY <i>[Signature]</i> CHECKED BY <i>[Signature]</i>	BY <i>[Signature]</i> DATE <i>[Date]</i> APPROVED BY PUBLIC WORKS DIRECTOR DATE <i>[Date]</i>	AS-BUILT PER BEACON INSTALLATION REVISIONS APPR. DATE	DATE <i>[Date]</i>	HORIZ. SCALE: 1" = 20' VERT. SCALE: 1" =