

CONDUCTOR SCHEDULE		CONDUIT RUN																			
CONTROL FUNCTION	CONDUCTORS	1	2	3	4	5	6	7	8	9	10	11	12	13	14	15	16	17	18	19	20
VEH HEADS (EIT)	#14 THW	3	3	3	3	3	3	3	3	3	3	3	3	3	3	3	3	3	3	3	3
FED HEADS	#14 THW	2	2	2	2	2	2	2	2	2	2	2	2	2	2	2	2	2	2	2	2
PERMISHION	#14 THW	1	2	2	2	2	2	2	2	2	2	2	2	2	2	2	2	2	2	2	2
SPARES (BY COMMON)	#14 THW	3	3	3	3	3	3	3	3	3	3	3	3	3	3	3	3	3	3	3	3
DET CABLES (EIT)	#14 THW	2	2	2	2	2	2	2	2	2	2	2	2	2	2	2	2	2	2	2	2
BY COMMON SIGNAL SERVICE LUMINAIRE INTERCONNECT	#14 THW	1	1	1	1	1	1	1	1	1	1	1	1	1	1	1	1	1	1	1	1
TOTALS	#14 THW	11	13	19	23	29	43	18	11	10	2										
	#14 PE	2	2	2	2	2	2	2	2	2	2	2	2	2	2	2	2	2	2	2	2
	#10 THW	1	1	1	1	1	1	1	1	1	1	1	1	1	1	1	1	1	1	1	1
	#8 THW	2	2	2	2	2	2	2	2	2	2	2	2	2	2	2	2	2	2	2	2
(EQUIV. #14)		(11)	(13)	(19)	(23)	(29)	(43)	(18)	(11)	(10)	(2)										
CONDUIT SIZE		2"	2"	2 1/2"	3"	3 1/2"	3 1/2"	2 1/2"	2"	2"	2"	2"	2"	2"	2"	2"	2"	2"	2"	2"	2"

INTERCONNECT CABLE SHALL BE No. 19 GA., 3 SHIELDED TWISTED PAIR

WHEEL CHAIR CONSTRUCTION
 CONSTRUCT MODIFIED AN STD. WHEELCHAIR RAMP PER STANDARD D118.1-94 AND AS DIRECTED BY THE ENGINEER.

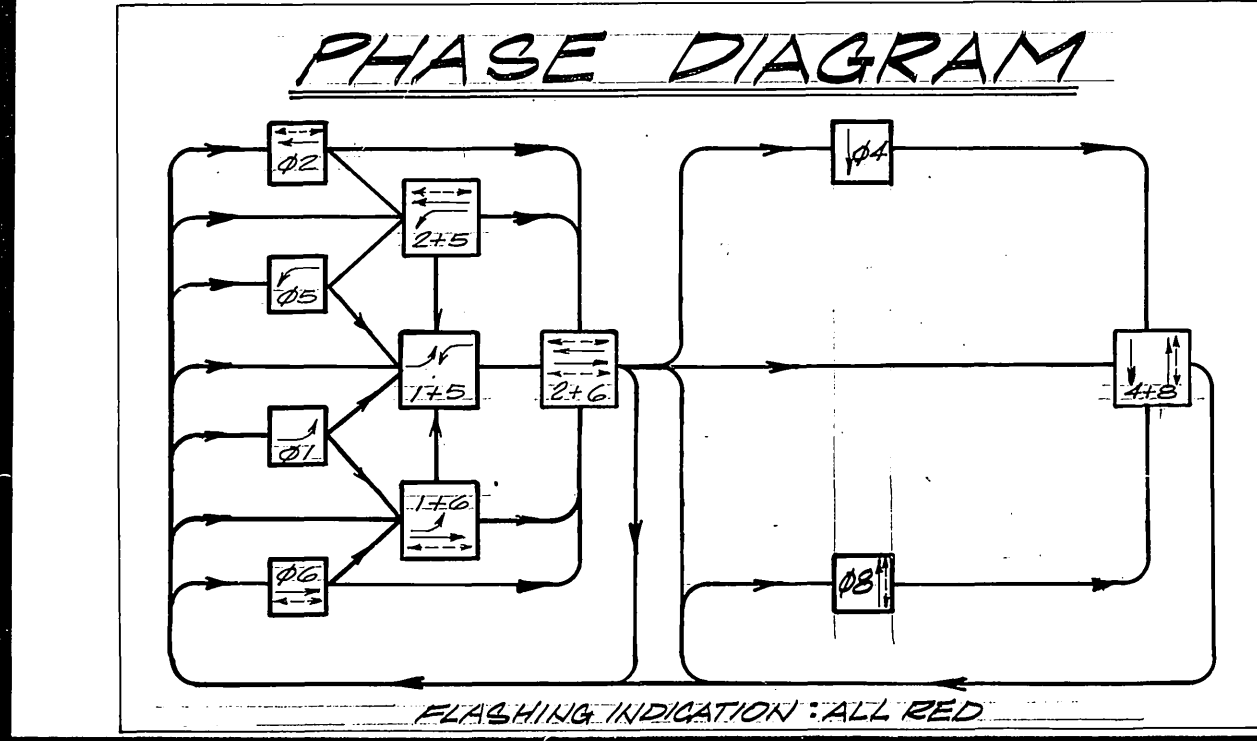
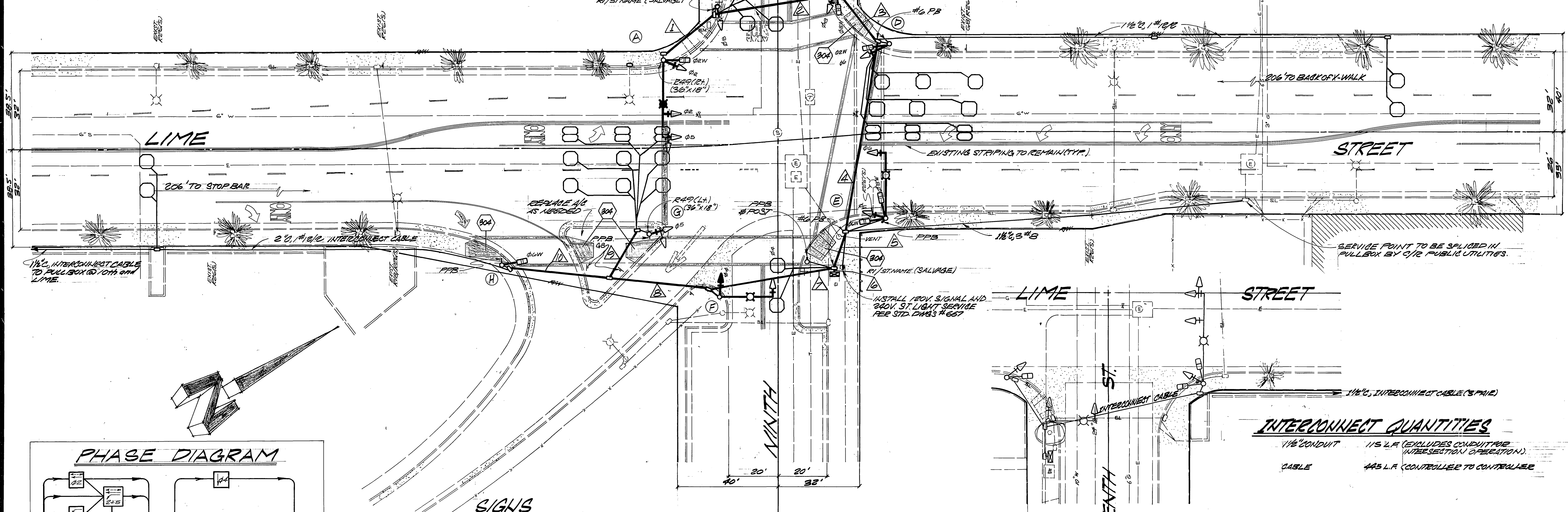
INSTALL R2B(S) ON EXIST. STD.

STRIPING QUANTITIES

REMOVALS:
 236 S.F.
 INSTALLATION:
 585 S.F. PAVEMENT MARKINGS
 190 L.F. DOUBLE YELLOW
 100 L.F. 8" BARBER STRIPE

EQUIPMENT SCHEDULE											
LOCATION	STANDARD	VEHICLE HEADS			PEDESTRIAN HEADS		LUMINAIRE WATTAGE	INT ILLUM STREET NAME SIGN	REMARKS		
		HEAD	MOUNTING	RACK PLATE	HEAD	MOUNTING					
A	19A-3-20 203A151A	W30 (10)	MAS	1	W20	SPL-T	200W.		SALVAGE EXISTING 45 D4 STD. W/ SPOLE #5 PULL BOX & RECONNECT CABLE. RELOCATE LUMINAIRE TO NEW STD. INSTALL R2B(S) ON NEW STD.		
B	1A-10	W30	TV-LT	1							
C	1A-10	W30	TV-LT	1	W20	SPL-T					
D	1A-10	W30	TV-LT	1	W20	SPL-T					
E	19A-3-20 203A151A	W30 (10)	MAS	1	2W20	SPL-T	200W.		SALV. EXIST. 45 D4 STD. INSTALL #5 PULL BOX & RECONNECT CABLE. LUMINAIRE AND SIGN TO NEW STD. SALVAGE EXIST. 45 D4 STD. & RELOCATE LUM. TO NEW STD.		
F	17A-2-7 203A151A	W30 (10)	MAS	1			200W.				
G	1A-10	W30 (6)	TV-LT	1							
H	1A-7				W20	TP-LT					

ALL LEFT TURN INDICATIONS ARE 18" APPROX.
 ALL TYPE 1 STANDARDS ARE ALUMINUM AND SHALL BE FURNISHED WITH ANCHOR COVERS.
 LUMINAIRE ARE HIGH PRESSURE SODIUM VAPOR.



SIGNS
 ALL R2B(S) SIGNS SHALL BE INSTALLED 45° TOWARD ROADWAY.

STRIPING LEGEND

- EXISTING STRIPING TO REMAIN
- - - REMOVE EXISTING STRIPING & PAVEMENT MARKINGS
- PAINT NEW STRIPING & PAVEMENT MARKINGS

INTERCONNECT QUANTITIES

1/2" CONDUIT 115 L.F. (EXCLUDES CONDUIT FOR INTERSECTION OPERATION)
 CABLE 445 L.F. (CONTROLLED TO CONTROLLER)

CITY OF RIVERSIDE PUBLIC WORKS DEPARTMENT				TRAFFIC SIGNAL LIME STREET AT NINTH STREET		ACCOUNT NO. 20-52-35-20 X-154 SHEET 1 OF 1
APPROVED	DATE	APPROVED BY	DATE			
PRINCIPAL ENGINEER	12/1/79	[Signature]	3/6/80			
PARK DEPARTMENT		PUBLIC WORKS DIRECTOR				
CHIEF E. E. ENGINEER						
DESIGNED BY	REVISIONS	APPR. DATE	CHECKED BY			
DRAWN BY						