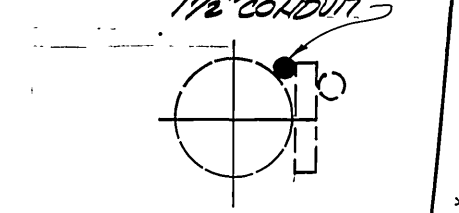


### EQUIPMENT SCHEDULE

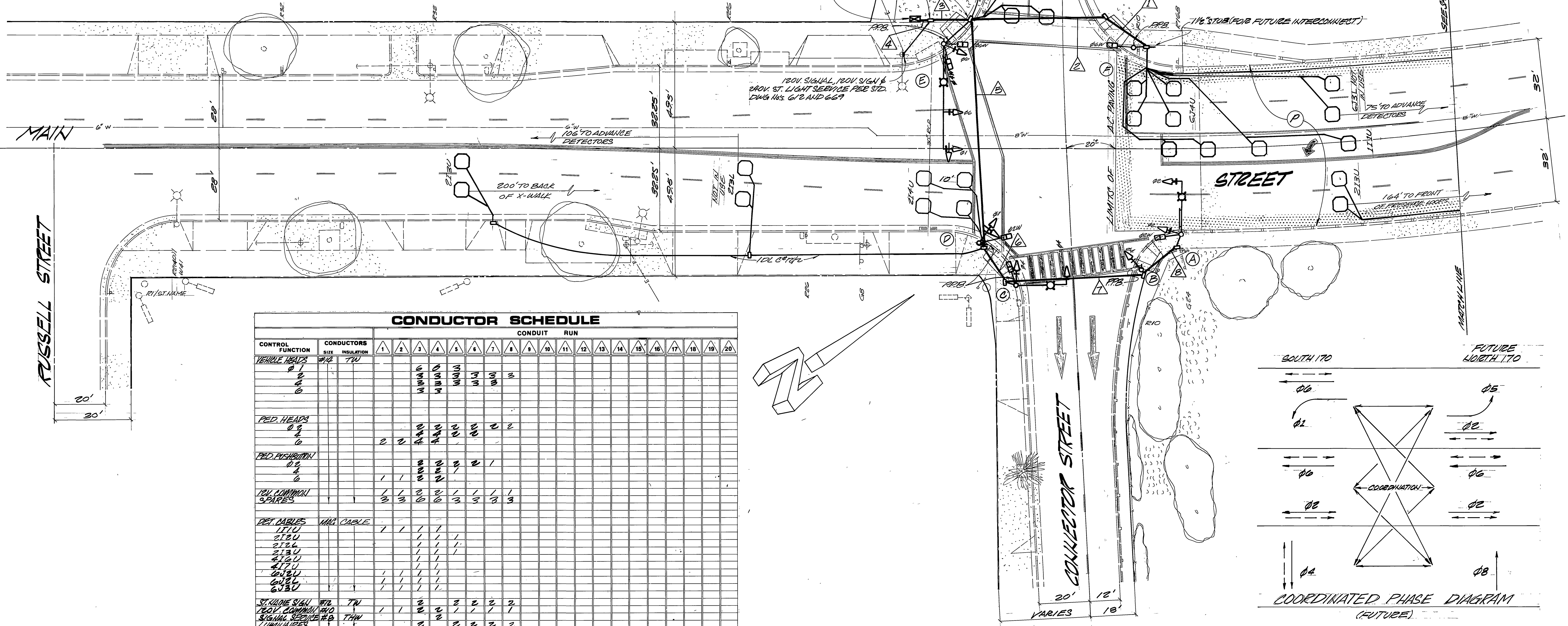
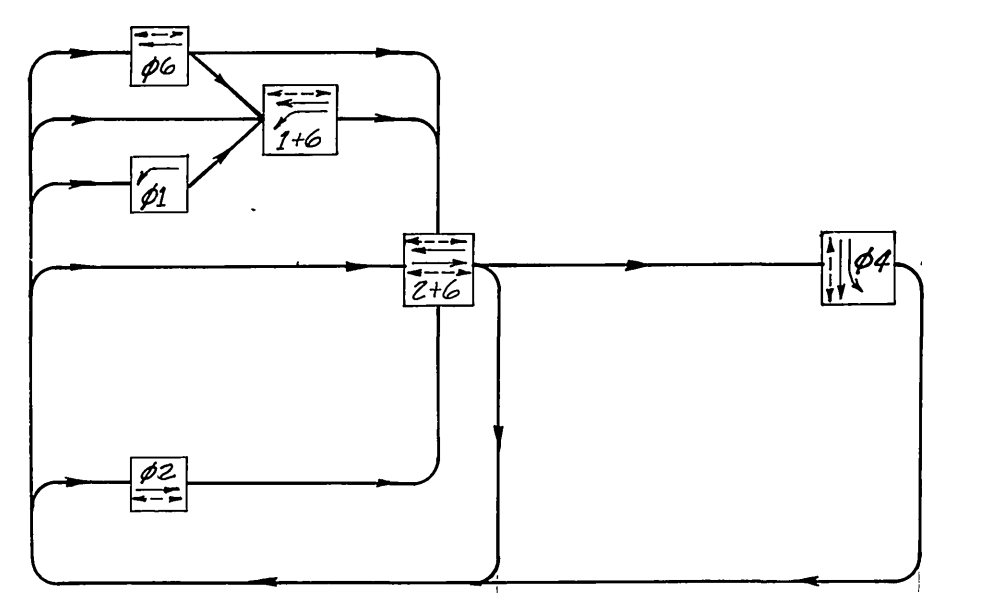
LOCATION	STANDARD	VEHICLE HEADS			PEDESTRIAN HEADS			LUMINAIRE	INT ILLUM STREET NAME SIGN	REMARKS
		HEAD	MOUNTING	BACK PLATE	HEAD	MOUNTING	PPS			
A	17-2-70 15A, 205A	1W3C (12")	MAS SU-1-T	1	1W2C	SP-1-T		200W	Connector 3750	KNOCKED DOWN; INSTALLED TYPE III ALUMINUM
B	1A (10')	1W3C (12")	TV-1-T							
C	17-2-70 15A, 205A	1W3C (12")	MAS SU-1-T	1	1W2C	SP-1-T		200W	Main 2125	
D	1A (10')	1W3C	TV-1-T		1W2C	SP-1-T				ALL 12" ARROWS
E	26-4-70 15A, 405A	1W3C (12")	MAS SU-1-T	1	1W2C	SP-2-T		200W	Connector 3750	ALL 12" ARROWS & 61 L.T. (MAS)
F	1A (7')				1W2C	SP-1-T				

TYPE III STANDARDS ARE ALUMINUM  
LUMINAIRES ARE HIGH PRESSURE SODIUM VAPOR

#### EISER DETAIL



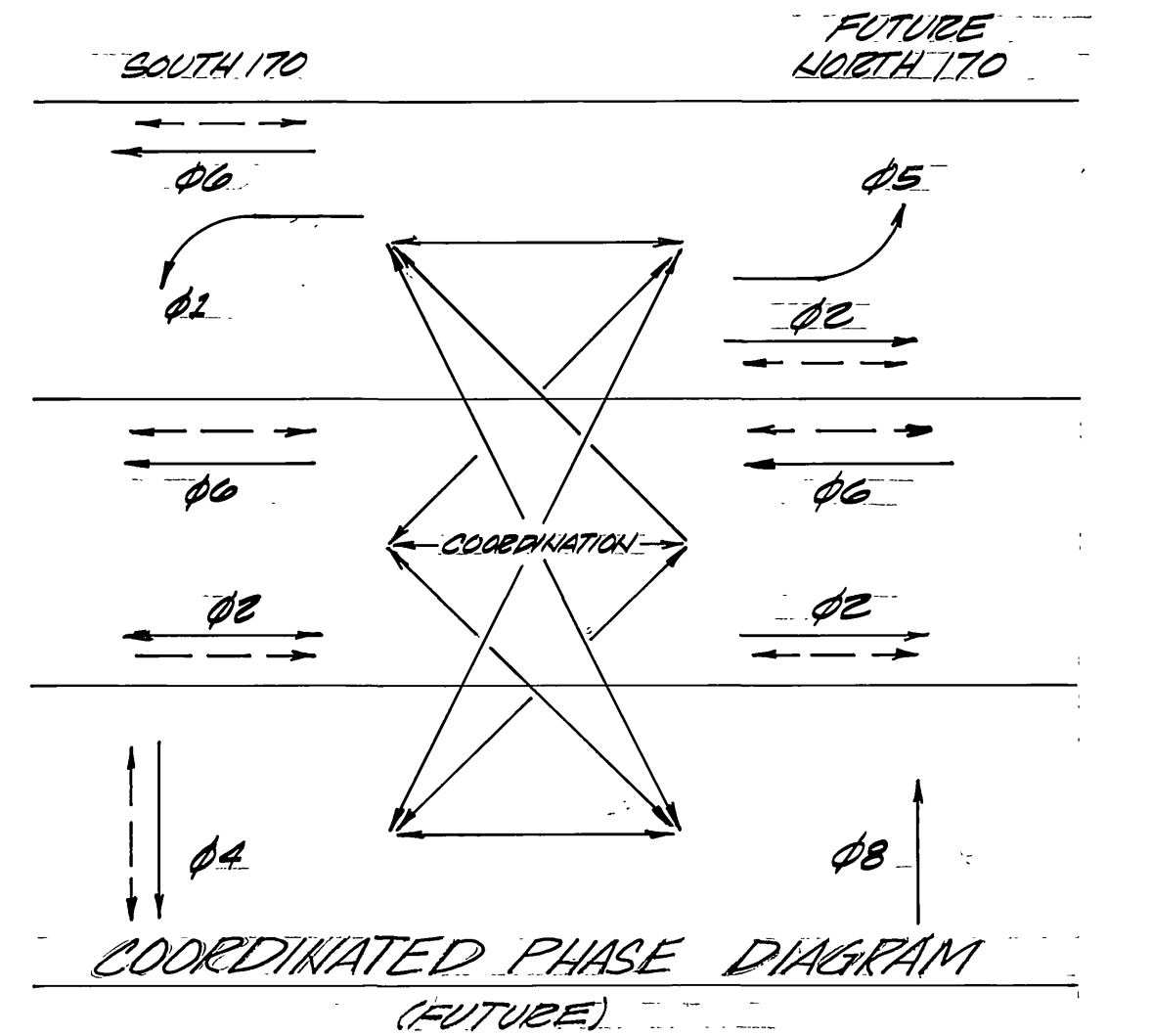
#### PHASE DIAGRAM



### CONDUCTOR SCHEDULE

CONTROL FUNCTION	CONDUCTORS	CONDUIT RUN																			
		1	2	3	4	5	6	7	8	9	10	11	12	13	14	15	16	17	18	19	20
VEHICLE HEADS	#14 TW																				
PED. HEADS	#14 TW																				
PED. DISTRIBUTION	#14 TW																				
120V COMMON SPARKS	#14 TW																				
DET. CABLES	#14 TW																				
ST. NAME SIGN	#14 TW																				
120V COMMON SIGNAL SERVICE	#14 TW																				
INTERCONNECT	#14 PE																				
TOTALS	#14 TW	7	7	36	36	19	15	13	9												
CONDUIT SIZE		2"	2"	2"	2"	2"	2"	2"	2"												

INTERCONNECT CABLE: 6 PAIR-12 WIRE, NO. 22 GA. AWG.



**CITY OF RIVERSIDE**  
PUBLIC WORKS DEPARTMENT

APPROVED BY: *[Signature]* DATE: 11/8/83  
 PRINCIPAL ENGINEER  
 PARK DEPARTMENT  
 TRAFFIC DIVISION  
 CHIEF P.W. ENGINEER  
 DESIGNED BY: *[Signature]* DRAWN BY: *[Signature]* CHECKED BY: *[Signature]*

TRAFFIC SIGNALS  
**CONNECTOR STREET,  
 MAIN STREET,  
 OAKLEY AVENUE,  
 AND 60 FREEWAY**

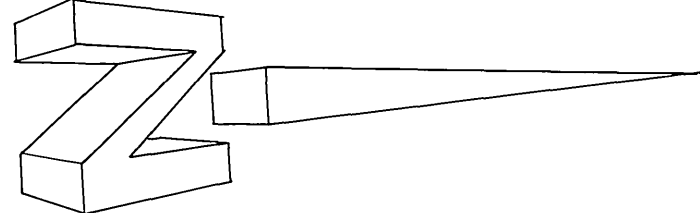
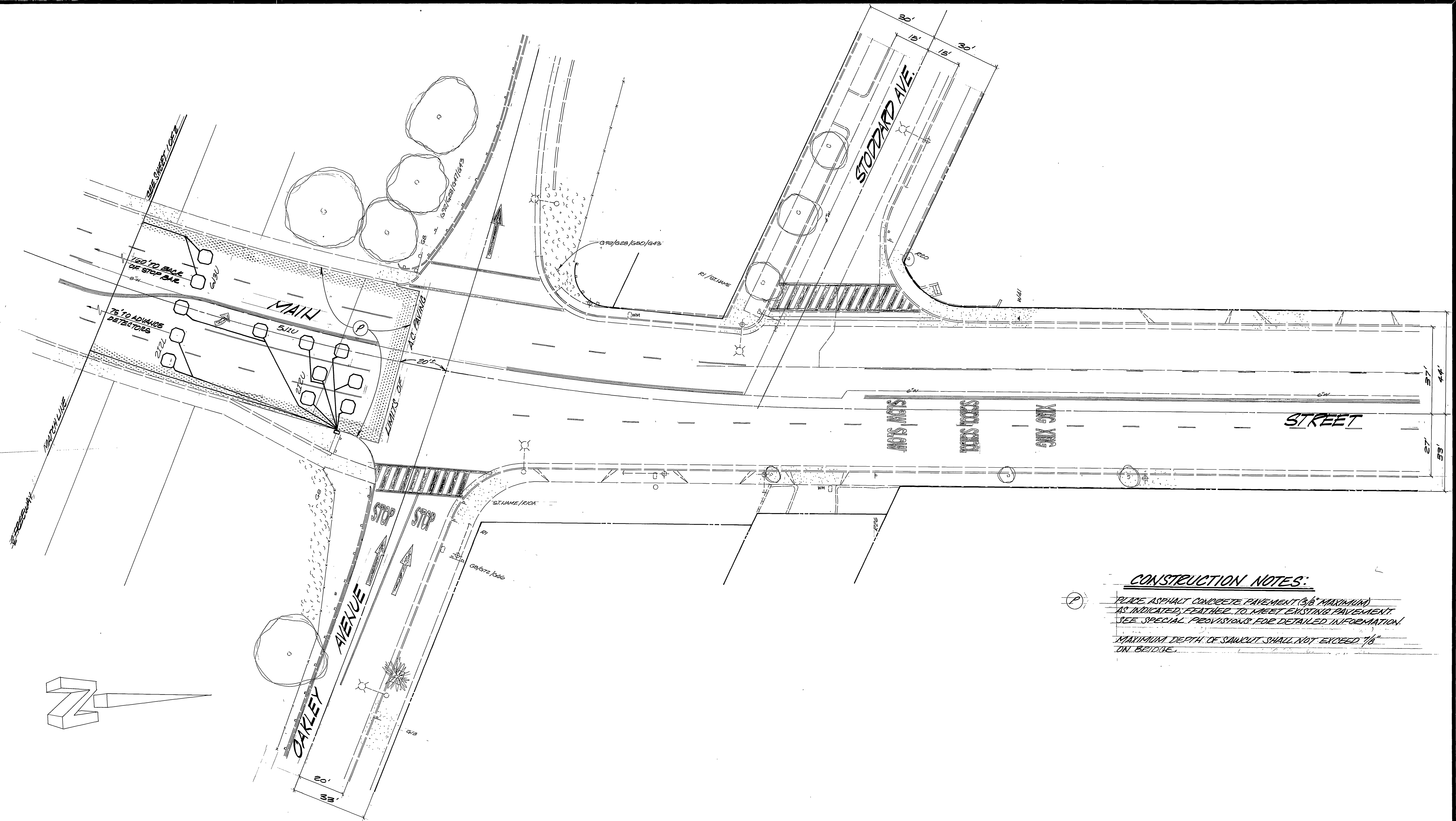
APPROVED BY: *[Signature]* DATE: 11/8/83  
 PUBLIC WORKS DIRECTOR

DATE: 11/8/83

ACCOUNT NO. 30-316-308-07

**X-155**

SHEET 1 OF 2



**CONSTRUCTION NOTES:**

① PLACE ASPHALT CONCRETE PAVEMENT (3/8" MAXIMUM) AS INDICATED; FEATHER TO MEET EXISTING PAVEMENT. SEE SPECIAL PROVISIONS FOR DETAILED INFORMATION.

MAXIMUM DEPTH OF SAWCUT SHALL NOT EXCEED 1/8" ON BRIDGE.

<p>DESIGNED BY <i>SM</i> DRAWN BY <i>MH</i> CHECKED BY <i>SM</i></p>				<p>CITY OF RIVERSIDE PUBLIC WORKS DEPARTMENT</p>				<p>TRAFFIC SIGNALS CONNECTOR STREET, MAIN STREET, OAKLEY AVENUE, AND GO FREEWAY</p>		<p>ACCOUNT NO 30-576-308-07</p>
				<p>APPROVED BY PRINCIPAL ENGINEER PARK DEPARTMENT TRAFFIC DIVISION CHIEF P. W. ENGINEER</p>		<p>BY DATE <i>SM</i> 11/4/83 <i>J</i> 11/4/83 <i>SM</i> 11/4/83</p>		<p>APPROVED BY PUBLIC WORKS DIRECTOR <i>[Signature]</i></p>		<p>X-155 SHEET 2 OF 2</p>
<p>DATE 11/4/83</p>				<p>DATE 11/4/83</p>				<p>DATE 11/4/83</p>		
<p>DATE 11/4/83</p>				<p>DATE 11/4/83</p>				<p>DATE 11/4/83</p>		