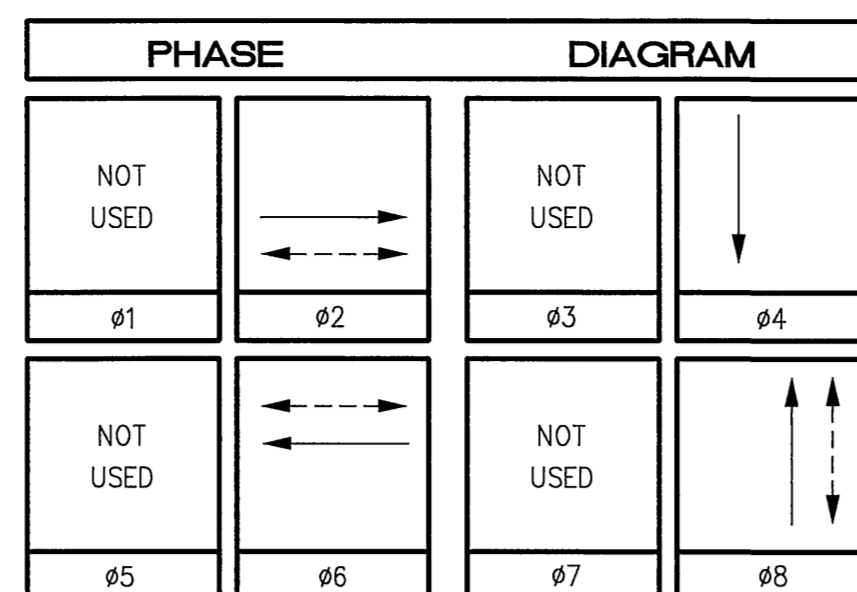
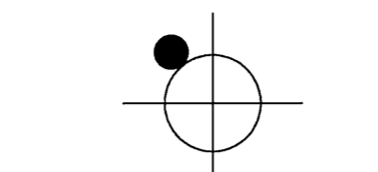


CONDUCTOR TABLE		CONDUCTOR RUNS									
CONTROL FUNCTION	CONDUCTORS	1	2	3	4	5	6	7	8	9	10
VEHICLE & PEDESTRIAN HEADS, PEDESTRIAN PUSH BUTTONS, SPARES & COMMONS	12 CONDUCTOR IMSA	1	1	1	2	3	6	2	2	2	1
	9 CONDUCTOR IMSA	-	-	-	-	-	-	-	-	-	-
	5 CONDUCTOR IMSA	-	-	-	-	-	-	-	-	-	-
	3 CONDUCTOR IMSA	1	2	3	3	3	6	3	2	1	1
DETECTOR CABLE	#16/2	-	-	-	-	2	2	-	-	-	-
PHASE 2		-	-	-	-	-	1	1	-	-	-
PHASE 4		-	-	-	-	-	2	2	2	2	2
PHASE 6		-	-	-	-	-	1	1	-	-	-
PHASE 8		-	1	1	1	1	1	-	-	-	-
TOTALS		-	1	1	1	3	6	3	2	2	2
EVPE CABLE	#20/4	-	-	-	-	-	2	-	-	-	-
IISNS	#12	2	2	2	2	2	-	-	-	-	-
LUMINAIRES	#8	2	2	2	2	2	-	-	-	-	-
SIGNAL SERVICE	#6	2	2	2	2	2	2	-	-	-	-
CONDUIT SIZE		2"	3"	3"	3"	3"	2-3"	3"	3"	3"	2"



PP# 10302J

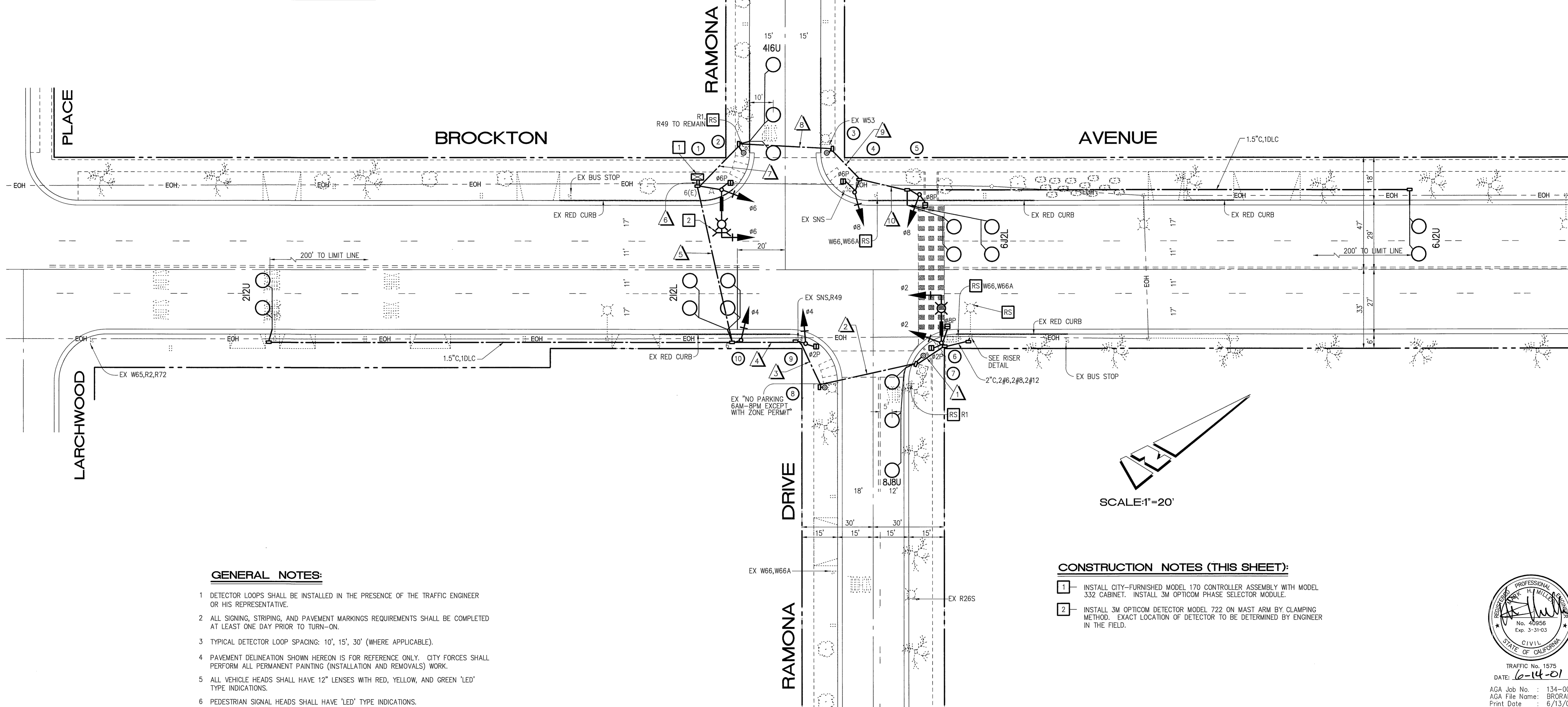


RISER DETAIL

INSTALL 120V SIGNAL, 120V SIGN AND 240V STREET LIGHT SERVICE PER STANDARD DWG. NO. 612

No.	TYPE	STANDARD HGT.	SIG. M.A.	LUM. M.A.	LUMINAIRE HPS	IISNS LEGEND	SCHEDULE			REMARKS	
							VEHICLE	PED	AUDIBLE		
1	17-2-80	30'	20'	12'	250W	Ramona Dr 4100	MAS	SV-1-T	SP-1-T	((P))	-
2	PPB POST	3'10"	-	-	-	-	-	-	-	-	φ6
3	PPB POST	3'10"	-	-	-	-	-	-	-	-	φ6
4	1-A	10'	-	-	-	-	-	TV-1-T	SP-1-T	((P))	-
5	1-A	10'	-	-	-	-	-	TV-2-T	SP-1-T	((C))	φ8
6	17-2-80	30'	20'	12'	250W	Ramona Dr 4000	MAS	SV-1-T	SP-2-T	((C))/((P))	-
7	PPB POST	3'10"	-	-	-	-	-	-	-	-	φ2/φ8
8	PPB POST	3'10"	-	-	-	-	-	-	-	-	φ2
9	1-A	10'	-	-	-	-	-	TV-1-T	SP-1-T	((P))	-
10	1-A	10'	-	-	-	-	-	TV-2-T	-	-	-

NOTE: ALL POLES AND MAST ARMS WILL BE CITY-FURNISHED. THE CONTRACTOR SHALL PROVIDE ALL ANCHOR BOLTS, HARDWARE AND OTHER APPURTENANCES REQUIRED FOR THE INSTALLATION OF CITY-FURNISHED POLES.
 ((C)) OR ((P)) - INDICATES AUDITORY PEDESTRIAN SIGNAL TO BE INSTALLED; ((C)) INDICATES CUCKOO SOUND; ((P)) INDICATES PEEP-PEEP SOUND.



GENERAL NOTES:

- 1 DETECTOR LOOPS SHALL BE INSTALLED IN THE PRESENCE OF THE TRAFFIC ENGINEER OR HIS REPRESENTATIVE.
- 2 ALL SIGNING, STRIPING, AND PAVEMENT MARKINGS REQUIREMENTS SHALL BE COMPLETED AT LEAST ONE DAY PRIOR TO TURN-ON.
- 3 TYPICAL DETECTOR LOOP SPACING: 10', 15', 30' (WHERE APPLICABLE).
- 4 PAVEMENT DELINEATION SHOWN HEREON IS FOR REFERENCE ONLY. CITY FORCES SHALL PERFORM ALL PERMANENT PAINTING (INSTALLATION AND REMOVALS) WORK.
- 5 ALL VEHICLE HEADS SHALL HAVE 12" LENSES WITH RED, YELLOW, AND GREEN 'LED' TYPE INDICATIONS.
- 6 PEDESTRIAN SIGNAL HEADS SHALL HAVE 'LED' TYPE INDICATIONS.
- 7 PEDESTRIAN PUSH BUTTONS SHALL BE ADA APPROVED TYPE.

CONSTRUCTION NOTES (THIS SHEET):

- 1 INSTALL CITY-FURNISHED MODEL 170 CONTROLLER ASSEMBLY WITH MODEL 332 CABINET. INSTALL 3M OPTICOM PHASE SELECTOR MODULE.
- 2 INSTALL 3M OPTICOM DETECTOR MODEL 722 ON MAST ARM BY CLAMPING METHOD. EXACT LOCATION OF DETECTOR TO BE DETERMINED BY ENGINEER IN THE FIELD.

SCALE: 1"=20'

Underground Service Alert
 Call: TOLL FREE
 1-800
 227-2600
 TWO WORKING DAYS BEFORE YOU DIG

CITY OF RIVERSIDE, CALIFORNIA DEPARTMENT OF PUBLIC WORKS		TRAFFIC SIGNAL PLAN		ACCOUNT NO.
APPROVED BY	DATE	BY	DATE	X-165
PRINCIPAL ENGINEER	8/14/01	R. McBratt	8/14/01	
INSPECTION	8/13/01			SHEET ___ OF ___
TRAFFIC DIVISION	8/13/01			
CHIEF P. W. ENGINEER	8/14/01			HORIZ. SCALE: 1"= 20' VERT. SCALE: 1"= -
PUBLIC UTILITIES	8/14/01			
DESIGNED BY	DRAWN BY	CHECKED BY	DATE	
			8-20-2001	



TRAFFIC No. 1575
 DATE: 6-14-01
 AGA Job No. : 134-003
 AGA File Name: BRORAMSG
 Print Date : 6/13/01
 Last Revision : 6/13/01

ALBERT GROVER & ASSOCIATES
 TRANSPORTATION CONSULTING ENGINEERS
 211 E. Imperial Hwy., Suite 208 Fullerton, CA 92835
 (714) 992-2990
 FAX 992-2890