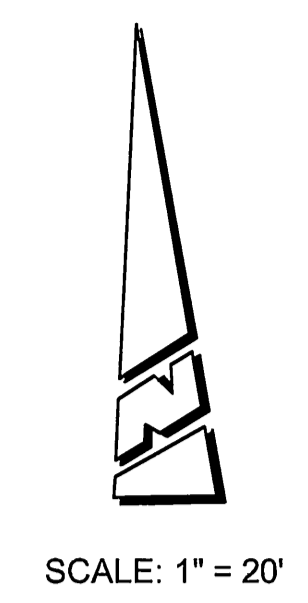


CONDUCTOR TABLE						
AWG	CIRCUIT	RUNS				
		1	2	3	4	5
#1			3/0	3		3
#2			3/0	3/0		3/0
#4			3/0	3/0	3	6/3
#5			3/0	3/0	3	6/3
#6				3		3
#2 PED			2/0	2/0		2/0
#4 PED			2/0	2/0	2	4/2
#6 PED				2	2	2
#2 PPB			1/0	2/1		2/1
#4 PPB			1/0	1/0	2	4/3
#6 PPB				2	1	2
SPARES			3/0	3	3	6
TOTAL			18/0	19/4	23	43/28
12 CONDUCTOR CABLE -- 0/2 0/3 -- 0/3						
9 CONDUCTOR CABLE -- 0/1 0/1 -- 0/1						
#12 ITSNS						
PPB COMMON -- 1 -- 1 1 1 1 2						
TOTAL -- 1 -- 1 1 1 1 2						
3 CONDUCTOR CABLE -- 0/2 0/3 -- 0/3						
2 #12 CABLE						
#1 DETECTOR -- 1 1 1 1 2						
#2 DETECTOR -- 1 1 1 1 2						
#4 DETECTOR -- 3/0 3/0 2 -- 5/2						
#5 DETECTOR -- 1 1 1 1 1						
#6 DETECTOR -- 1 1 1 1 1						
TOTAL CABLES -- 3/0 3/0 5 3 11/8						
DLC #4 DETECTOR -- 0/3 0/3 -- 0/3						
#8 LUMINAIRE -- 2/0 0/2 2/2 2 2 4/4						
#10 SIGNAL COMMON -- 1/0 -- 1 1 1 1 2						
TOTAL -- 3/0 0/2 3/3 3 3 6/6						
#14 R.R. PRE-EMPTION -- 2/0 -- 2/0 -- 2/0						
IMSA R.R. PRE-EMPTION -- 0/1 0/1 -- 0/1						
#19 INTERCONNECT CABLE -- 1/0 0/1 1/1 -- 1/1						
#8 SERVICE -- -- -- -- 3*						
CONDUIT SIZE -- 3" 3" (N) 3" 3" 2 1/2" 2-3"						
% OF CONDUIT AREA FILLED -- AB 24 33 12 13 24						



- LEGEND**
- P - PROTECT IN PLACE.
 - RF - REMOVE POLE FOUNDATION.
 - RS - REMOVE AND SALVAGE TO CITY OF RIVERSIDE.
 - TYPE OF TRAFFIC STRIPING MATERIAL
T = THERMOPLASTIC, P = PAINT (2 COATS)
 - PM - INSTALL PAVEMENT MARKING (AS SHOWN) PER PAGES A24A THRU A24E OF THE STANDARD PLANS, CALTRANS TYPE NUMBER OF PAVEMENT MARKING. W = WHITE
 - SB - REMOVE, BY WET SANDBLASTING, ALL CONFLICTING STRIPING AND PAVEMENT LEGENDS.

CONSTRUCTION NOTES (THIS SHEET):

- 1 - INSTALL NEW #6 PULL BOX.
- 2 - NOT USED
- 3 - REUSE STREET NAME SIGN FROM EXISTING SIGNAL POLE "E" ON PROPOSED SIGNAL POLE "I"
- 4 - WHEEL CHAIR RAMP, CURB & GUTTER AND SIDEWALK BY OTHERS.

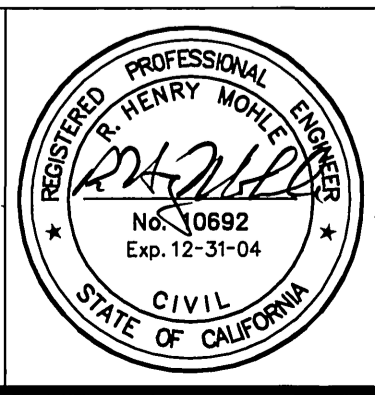
#/# = EXISTING/PROPOSED
 * = 3 CONDUCTOR IMSA CABLE CONTINUOUS FROM R.R. EQUIPMENT TO CONTROLLER CABINET.
 (N) = NEW ALL OTHER CONDUITS ARE EXISTING.

EX. SENSOR TABLE		
SENSOR	LOOP DETECTOR	
1	1-N-1	(3)
2	1-S-2	(4)
3	2-S-2	** (2)
4	1-E-4	(3)
5	2-E-4	(4)
6	3-E-4	** (2)
7	1-W-4	(3)
8	2-W-4	* (2)
9	1-S-5	(4)
10	1-N-6	(4)
11	2-N-6	* (2)

* = INTEGRAL ADJUSTABLE DELAY TIMER.
 ** = 2-CHANNEL SENSOR WITH INTEGRAL ADJUSTABLE TIMERS ONE INPUT TO CONTROLLER AND ONE ONE INPUT FOR SAMPLING.
 () = NUMBER OF LOOPS PER SENSOR.

Underground Service Alert
 CALL BEFORE YOU DIG
 CALL-TOLL FREE
1-800-227-2600
 TWO WORKING DAYS BEFORE YOU DIG

PRIVATE ENGINEERING NOTE
 CONSTRUCTION CONTRACTOR AGREES THAT IN ACCORDANCE WITH GENERALLY ACCEPTED CONSTRUCTION PRACTICES, CONSTRUCTION CONTRACTOR WILL BE REQUIRED TO ASSUME SOLE AND COMPLETE RESPONSIBILITY FOR JOB SITE CONDITIONS DURING THE COURSE OF CONSTRUCTION OF THE PROJECT, INCLUDING THE SAFETY OF ALL PERSONS AND PROPERTY THAT THIS REQUIREMENT SHALL BE MADE TO APPLY CONTINUOUSLY AND NOT BE LIMITED TO NORMAL WORKING HOURS, AND CONSTRUCTION CONTRACTOR FURTHER AGREES TO DEFEND, INDEMNIFY AND HOLD DESIGN PROFESSIONAL HARMLESS FROM ANY AND ALL LIABILITY, REAL OR ALLEGED, IN CONNECTION WITH THE PERFORMANCE OF WORK ON THIS PROJECT, EXCEPTING LIABILITY ARISING FROM THE SOLE NEGLIGENCE OF DESIGN PROFESSIONAL.



PLANS PREPARED UNDER SUPERVISION OF
R. J. Hill
 Date: Aug 22, 2001 R.C.E./0693 (EXP. 4/31/05)
 BENCH MARK:

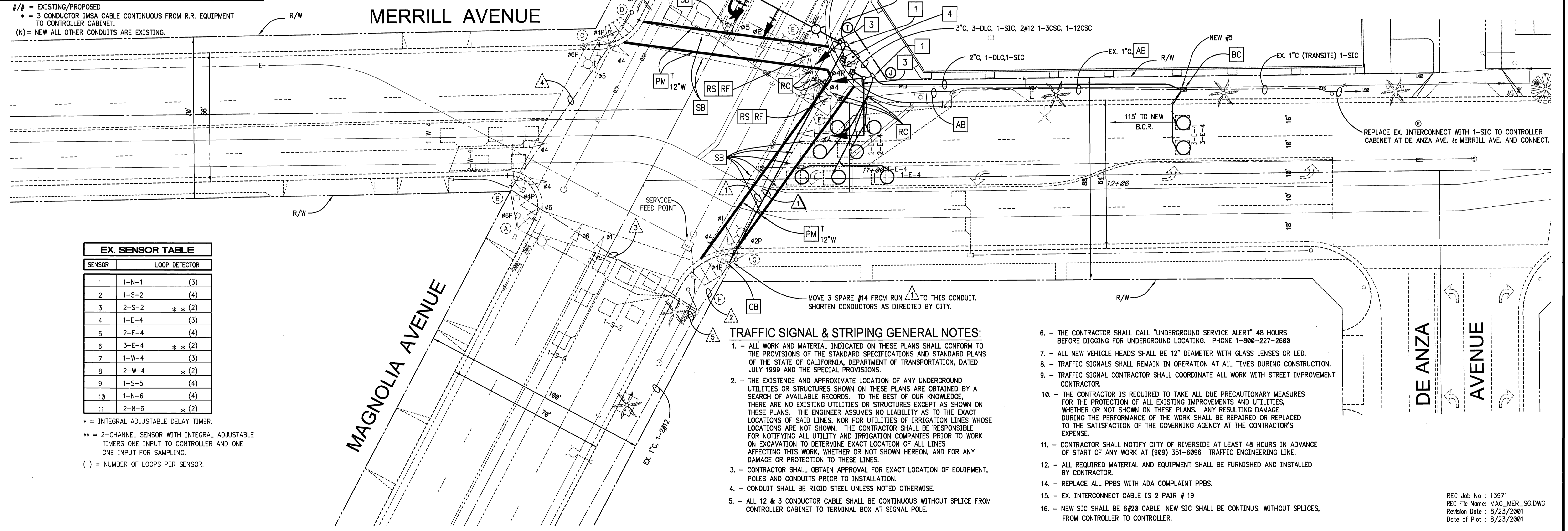
RICK ENGINEERING COMPANY

MARK	REVISIONS	APPR.	DATE
DESIGNED BY <i>LS</i>	DRAWN BY <i>LS/AM</i>	CHECKED BY <i>AW</i>	

CITY OF RIVERSIDE, CALIFORNIA DEPARTMENT OF PUBLIC WORKS			
APPROVED BY:	BY:	DATE:	APPROVED BY:
PRINCIPLE ENGINEER	<i>LS</i>	8/23/01	<i>Thom Boyd</i>
P.W. INSPECTION	<i>LS</i>	8/23/01	DIRECTOR OF PUBLIC WORKS
TRAFFIC DIVISION	<i>LS</i>	8/23/01	<i>Interim</i>
CHIEF P.W. ENGINEER			DATE: 8/23/01

CITY OF RIVERSIDE
 TRAFFIC SIGNAL MODIFICATION PLAN
 MAGNOLIA AVENUE AND
 MERRILL AVENUE

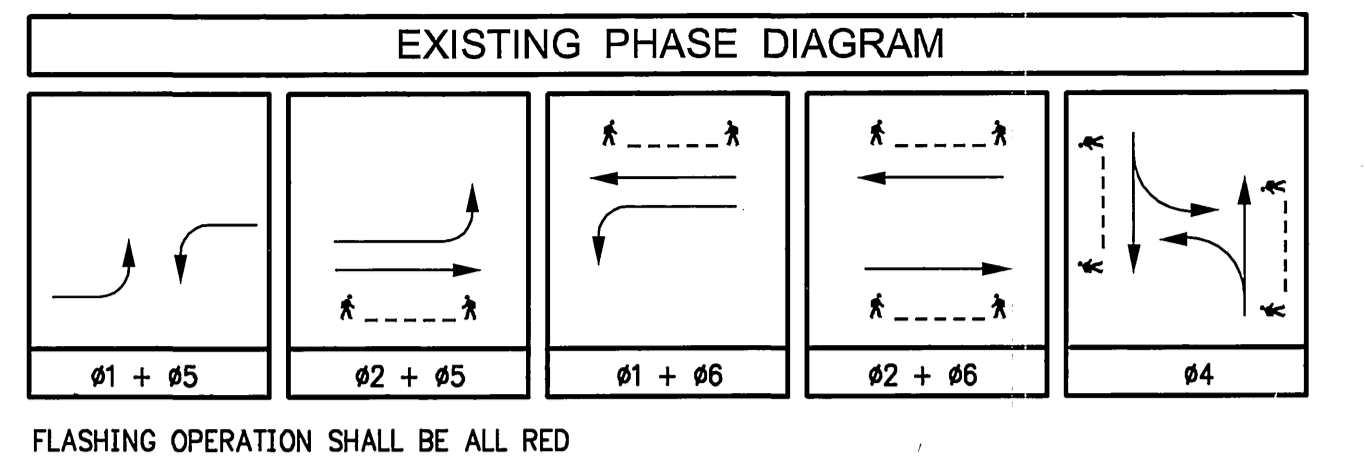
JOB NO. _____
X-207A
 SHEET 1 OF 1



TRAFFIC SIGNAL & STRIPING GENERAL NOTES:

1. - ALL WORK AND MATERIAL INDICATED ON THESE PLANS SHALL CONFORM TO THE PROVISIONS OF THE STANDARD SPECIFICATIONS AND STANDARD PLANS OF THE STATE OF CALIFORNIA, DEPARTMENT OF TRANSPORTATION, DATED JULY 1999 AND THE SPECIAL PROVISIONS.
2. - THE EXISTENCE AND APPROXIMATE LOCATION OF ANY UNDERGROUND UTILITIES OR STRUCTURES SHOWN ON THESE PLANS ARE OBTAINED BY A SEARCH OF AVAILABLE RECORDS. TO THE BEST OF OUR KNOWLEDGE, THERE ARE NO EXISTING UTILITIES OR STRUCTURES EXCEPT AS SHOWN ON THESE PLANS. THE ENGINEER ASSUMES NO LIABILITY AS TO THE EXACT LOCATIONS OF SAID LINES, NOR FOR UTILITIES OF IRRIGATION LINES WHOSE LOCATIONS ARE NOT SHOWN. THE CONTRACTOR SHALL BE RESPONSIBLE FOR NOTIFYING ALL UTILITY AND IRRIGATION COMPANIES PRIOR TO WORK ON EXCAVATION TO DETERMINE EXACT LOCATION OF ALL LINES AFFECTING THIS WORK, WHETHER OR NOT SHOWN HEREON, AND FOR ANY DAMAGE OR PROTECTION TO THESE LINES.
3. - CONTRACTOR SHALL OBTAIN APPROVAL FOR EXACT LOCATION OF EQUIPMENT, POLES AND CONDUITS PRIOR TO INSTALLATION.
4. - CONDUIT SHALL BE RIGID STEEL UNLESS NOTED OTHERWISE.
5. - ALL 12 & 3 CONDUCTOR CABLE SHALL BE CONTINUOUS WITHOUT SPLICE FROM CONTROLLER CABINET TO TERMINAL BOX AT SIGNAL POLE.

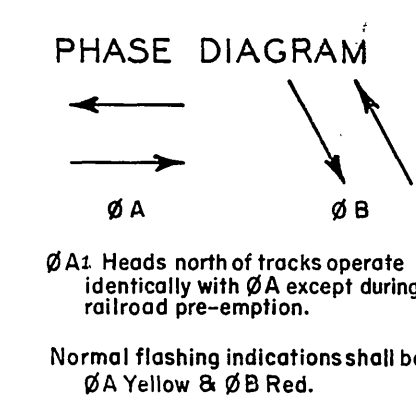
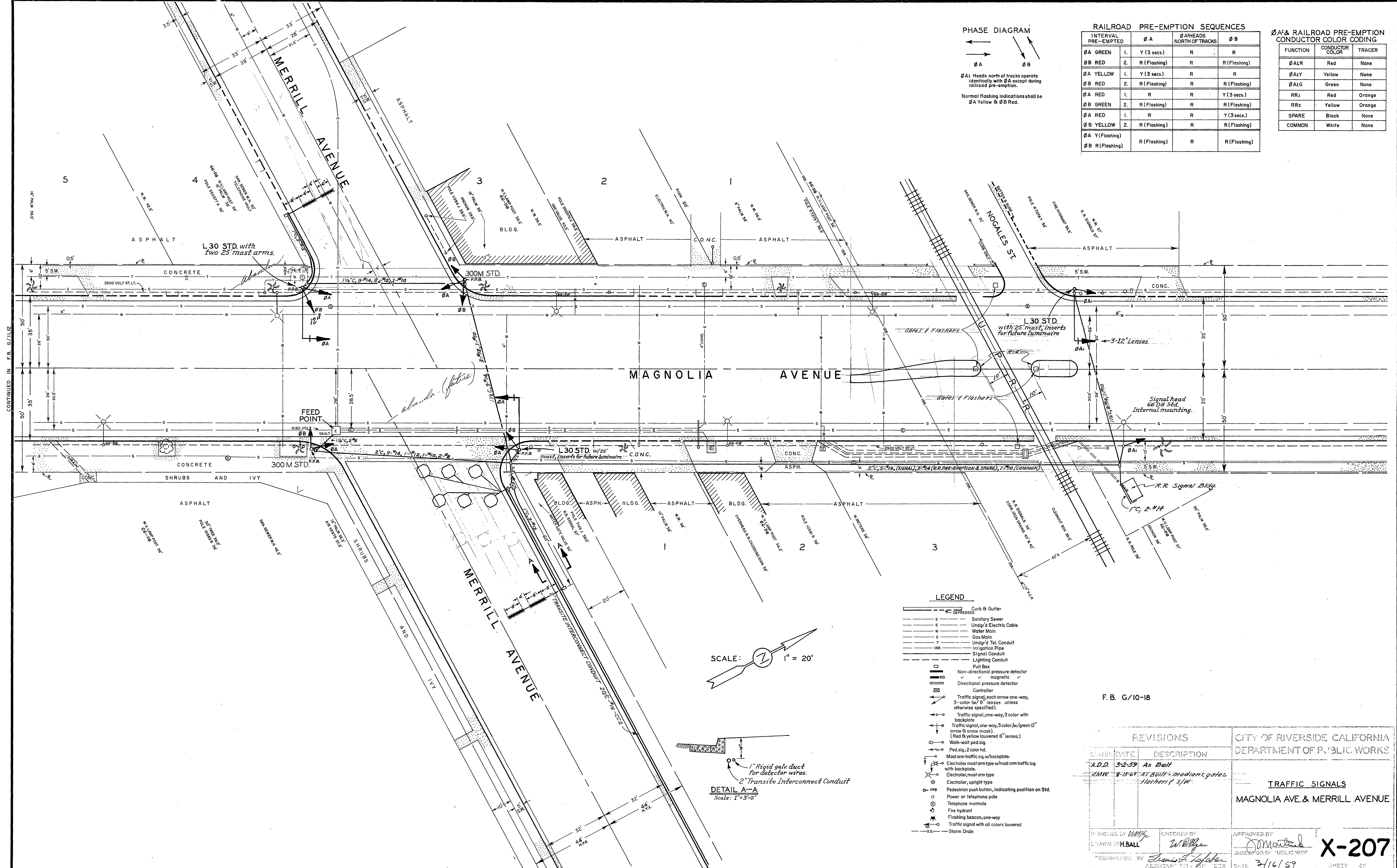
6. - THE CONTRACTOR SHALL CALL "UNDERGROUND SERVICE ALERT" 48 HOURS BEFORE DIGGING FOR UNDERGROUND LOCATING. PHONE 1-800-227-2600
7. - ALL NEW VEHICLE HEADS SHALL BE 12" DIAMETER WITH GLASS LENSES OR LED.
8. - TRAFFIC SIGNALS SHALL REMAIN IN OPERATION AT ALL TIMES DURING CONSTRUCTION.
9. - TRAFFIC SIGNAL CONTRACTOR SHALL COORDINATE ALL WORK WITH STREET IMPROVEMENT CONTRACTOR.
10. - THE CONTRACTOR IS REQUIRED TO TAKE ALL DUE PRECAUTIONARY MEASURES FOR THE PROTECTION OF ALL EXISTING IMPROVEMENTS AND UTILITIES, WHETHER OR NOT SHOWN ON THESE PLANS. ANY RESULTING DAMAGE DURING THE PERFORMANCE OF THE WORK SHALL BE REPAIRED OR REPLACED TO THE SATISFACTION OF THE GOVERNING AGENCY AT THE CONTRACTOR'S EXPENSE.
11. - CONTRACTOR SHALL NOTIFY CITY OF RIVERSIDE AT LEAST 48 HOURS IN ADVANCE OF START OF ANY WORK AT (909) 351-6096 TRAFFIC ENGINEERING LINE.
12. - ALL REQUIRED MATERIAL AND EQUIPMENT SHALL BE FURNISHED AND INSTALLED BY CONTRACTOR.
14. - REPLACE ALL PPBS WITH ADA COMPLAINT PPBS.
15. - EX. INTERCONNECT CABLE IS 2 PAIR # 19
16. - NEW SIC SHALL BE #20 CABLE. NEW SIC SHALL BE CONTINUS, WITHOUT SPLICES, FROM CONTROLLER TO CONTROLLER.



EX. POLE		SCHEDULE										
No.	STANDARD TYPE	HGT.	SIG. M.A.	LUM. M.A.	LUMINAIRE HPSV	ITSNS LEGEND	SIGNAL MOUNTING			PPB PHASE	REMARKS	
							VEHICLE	PED				
(A)	24A-4-70	35'	35'	12'	400 W	-	MAS	MAS	SV-1-T	SP-1-T	4	REMAIN UNCHANGED
(B)	16-2-70	17'	15'	-	-	-	-	MAS	SV-1-T	SP-1-T	6	REMAIN UNCHANGED
(C)	30	35'	-	12'	400 W	-	-	-	SV-2-T	SP-2-T	6	REMAIN UNCHANGED
(D)	PPB-POST	3'10"	-	-	-	-	-	-	-	-	4	REMAIN UNCHANGED
(E)	24A-4-70	35	35'	12'	400 W	-	MAS	MAS	SV-1-T	SP-1-T	4	TO BE REMOVED
(F)	16-2-70	17'	15'	-	-	-	-	MAS	SV-1-T	SP-1-T	2	TO BE REMOVED
(G)	30	35'	-	12'	400 W	-	-	-	SV-2-T	SP-2-T	2	REMAIN UNCHANGED
(H)	PPB POST	3'10"	-	-	-	-	-	-	-	-	4	REMAIN UNCHANGED

PROPOSED POLE		SCHEDULE										
No.	STANDARD TYPE	HGT.	SIG. M.A.	LUM. M.A.	LUMINAIRE HPSV	ITSNS LEGEND	SIGNAL MOUNTING			PPB PHASE	REMARKS	
							VEHICLE	PED				
(I)	26A-4-80	35'	45'	12'	400 W	-	MAS	MAS	SV-1-T	SP-1-T	4	INSTALL NEW
(J)	18-4-80	17'	25'	-	-	-	-	MAS	SV-1-T	SP-1-T	2	INSTALL NEW

NOTES: POLES (I) & (J) AND NEW EQUIPMENT SHALL REPLACE RESPECTIVELY POLES (E) & (F) AND OLD EQUIPMENT UNLESS OTHERWISE NOTED. BOLDER TEXT REPRESENTS NEW EQUIPMENT TO BE INSTALLED.



RAILROAD PRE-EMPTION SEQUENCES

INTERVAL PRE-EMPTED	Ø A	Ø A HEADS NORTH OF TRACKS	Ø B
Ø A GREEN	1. Y (3 secs.)	R	R
Ø B RED	2. R (Flashing)	R	R (Flashing)
Ø A YELLOW	1. Y (3 secs.)	R	R
Ø B RED	2. R (Flashing)	R	R (Flashing)
Ø A RED	1. R	R	Y (3 secs.)
Ø B GREEN	2. R (Flashing)	R	R (Flashing)
Ø A RED	1. R	R	Y (3 secs.)
Ø B YELLOW	2. R (Flashing)	R	R (Flashing)
Ø A Y (Flashing)			
Ø B R (Flashing)	R (Flashing)	R	R (Flashing)

Ø A & RAILROAD PRE-EMPTION CONDUCTOR COLOR CODING

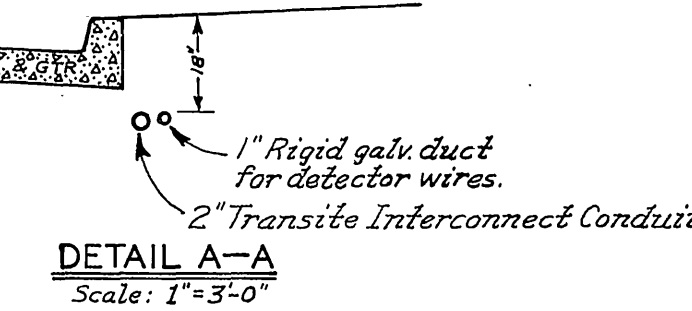
FUNCTION	CONDUCTOR COLOR	TRACER
Ø A1R	Red	None
Ø A1Y	Yellow	None
Ø A1G	Green	None
RR1	Red	Orange
RR2	Yellow	Orange
SPARE	Black	None
COMMON	White	None

CONTINUED IN F.B. G/1112

LEGEND

- DEPRESSED — Curb & Gutter
- S — Sanitary Sewer
- E — Undgr'd Electric Cable
- W — Water Main
- G — Gas Main
- T — Undgr'd Tel. Conduit
- IRR — Irrigation Pipe
- — Signal Conduit
- — Lighting Conduit
- Pull Box
- Non-directional pressure detector
- Directional pressure detector
- Controller
- ← Traffic signal, each arrow one-way, 3-color (w/ 8" lenses unless otherwise specified).
- ← Traffic signal, one-way, 3 color with backplate
- ← Traffic signal, one-way, 3 color w/ green 12" arrow & arrow mask. (Red & yellow lowered 8" lenses.)
- Walk-wait ped. sig.
- Ped. sig., 2 color hd.
- Most arm traffic sig. w/ backplate.
- Electroliner most arm type w/ most arm traffic sig. with backplate.
- Electroliner, most arm type
- Electroliner, upright type
- PFB Pedestrian push button, indicating position on Std.
- Power or telephone pole
- Telephone manhole
- Fire hydrant
- Flashing beacon, one-way
- Traffic signal with all colors lowered
- SD — Storm Drain

SCALE: 1" = 20'



F. B. G/10-18

REVISIONS		CITY OF RIVERSIDE CALIFORNIA DEPARTMENT OF PUBLIC WORKS
DATE	DESCRIPTION	
A.D.D. 3-2-59	As Built	TRAFFIC SIGNALS MAGNOLIA AVE. & MERRILL AVENUE
J.M.M. 8-18-69	As Built - median, gates, flashers & s/w	

DESIGNED BY: <i>W.H. Ball</i>	CHECKED BY: <i>W.H. Ball</i>	APPROVED BY: <i>W.H. Ball</i>
DRAWN BY: <i>H. Ball</i>		DIRECTOR OF PUBLIC WORKS
COMMISSIONED BY: <i>Thomas A. Johnson</i>	DATE: 3/16/59	

X-207