

EQUIPMENT

SCHEDULE

NO.	SIGNAL STANDARD			LUMINAIRE		I.I.S.N.S.		SIGNAL MOUNTINGS		PPB	REMARKS
	TYPE	H'GHT	M.A.	L.A.	H.P.S.V.	LEGEND	VEHICLE	PEDESTRIAN	PHASE		
(A)	24-3-70(E)	30'	35'(E)	12'(E)	200W(E)		MAS(E)				
							MAS(E)				
							SV-1-T(N)	SP-1-T(E)	8(E)		Remove and salvage exist. SV-1-T
(B)	24-4-129(N)	9.1	10.7(N)	3.7(N)	250W(N)		MAS(N)				
							MAS(N)				Relocate exist. pole and equip. to Loc. C
							SV-1-T(N)	SP-1-T(N)	6(N)		
(C)	1A(R)	3.05					TV-1-T(R)	SP-1-T(R)	6(R)		Install relocated pole and equip. from Loc. B
(D)	1A(E)	10'					TV-1-T(E)	SP-1-T(E)	4(E)		
(E)	24-3-70(E)	30'	35'(E)	12'(E)	200W(E)		MAS(E)				
							MAS(E)				
							SV-1-T(N)	SP-1-T(E)	4(E)		Remove and salvage exist. SV-1-T
(F)	1A(E)	10'					TV-2-T(N)	SP-1-T(E)	2(E)		Remove and salvage exist. TV-2-T
(G)	58J18G18(E)		12'(E)		200W(E)			SP-1-T(E)	2(E)		Remove and salvage exist. Signal arm, MAS and SV-1-T.
(H)	18-4-129(N)	5.2	9.1(N)				MAS(N)				
							MAS(N)				Remove and salvage exist. 1A and TV-1-T.
							SV-2-TD(N)	SP-1-T(R)	8(N)		Relocate SP-1-T to new pole.

E = EXISTING, N = NEW, R = RELOCATE

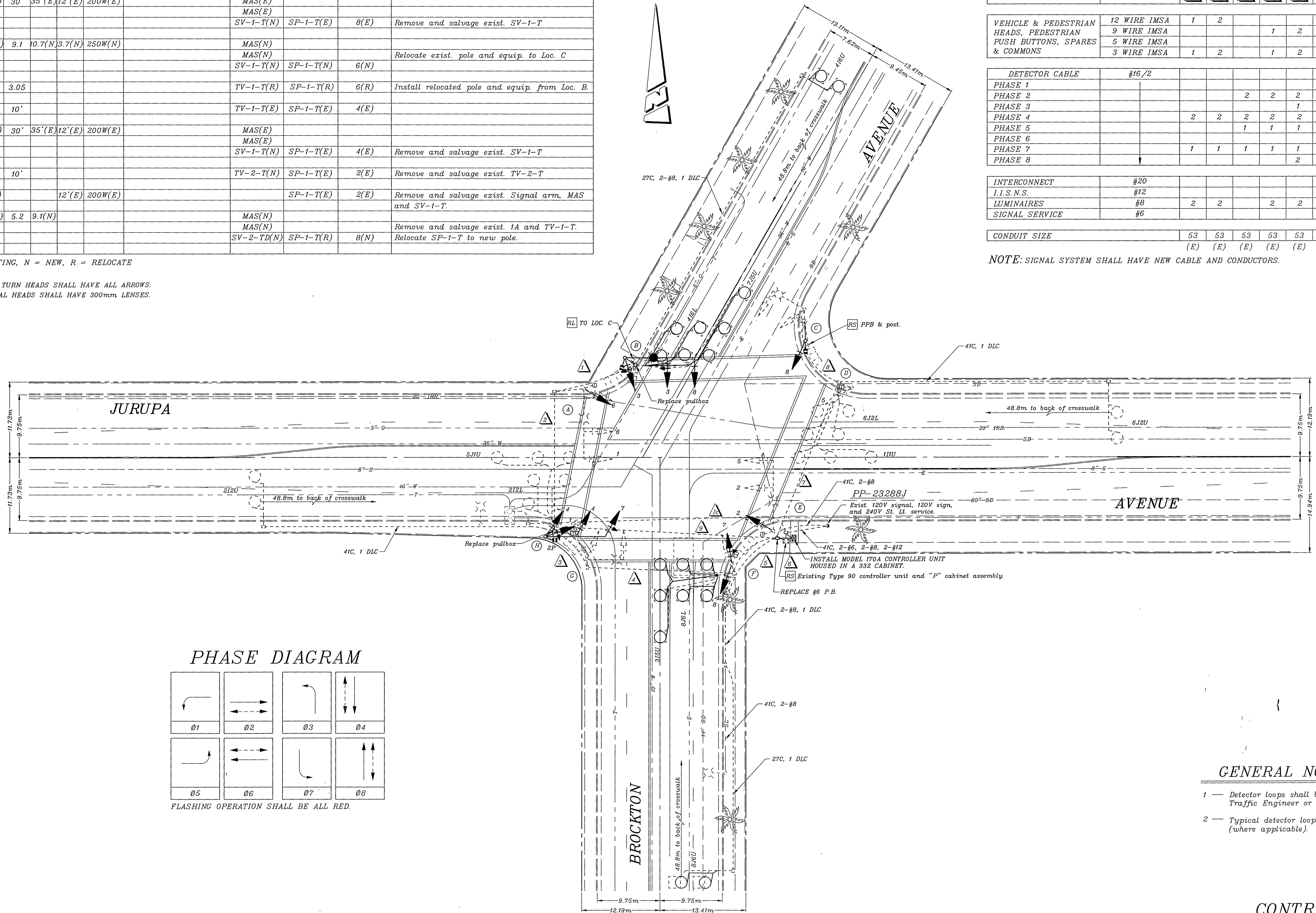
NOTES:

- NEW LEFT TURN HEADS SHALL HAVE ALL ARROWS.
- NEW SIGNAL HEADS SHALL HAVE 300mm LENSES.

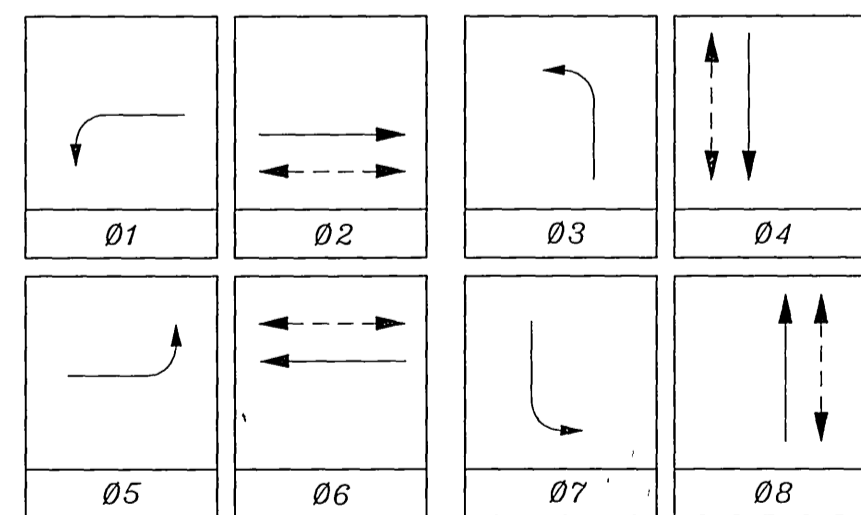
CONDUCTOR TABLE

CONTROL FUNCTION	CONDUCTORS	CONDUCTOR RUNS											
		1	2	3	4	5	6	7	8	9	1c		
VEHICLE & PEDESTRIAN HEADS, PEDESTRIAN PUSH BUTTONS, SPARES & COMMONS	12 WIRE IMSA 9 WIRE IMSA 5 WIRE IMSA 3 WIRE IMSA	1	2			1	2	4	2	1			3
DETECTOR CABLE	#16/2									1			1
PHASE 1													
PHASE 2					2	2	2	2					
PHASE 3									1	1			
PHASE 4		2	2	2	2	2	2	2					
PHASE 5					1	1	1	1					
PHASE 6									2	2			
PHASE 7		1	1	1	1	1	1	1					
PHASE 8									2	2			
INTERCONNECT	#20												
I.I.S.N.S.	#12												
LUMINAIRES	#8	2	2		2	2							2
SIGNAL SERVICE	#6								2				
CONDUIT SIZE		53	53	53	53	53	2-78	53	41	53	53		
		(E)	(E)	(E)	(E)	(E)	(N)	(E)	(E)	(E)	(E)		

NOTE: SIGNAL SYSTEM SHALL HAVE NEW CABLE AND CONDUCTORS.



PHASE DIAGRAM



FLASHING OPERATION SHALL BE ALL RED.

GENERAL NOTES

- Detector loops shall be installed in the presence of the Traffic Engineer or his representative.
- Typical detector loop spacing: 3.0m and 4.5m. (where applicable).

CONTRACT TE-97-10



IMPORTANT NOTICE
 Section 4216/4217 of the Government Code requires a Dig Alert identification Number to be issued before a "Permit to Excavate" will be valid. For your Dig Alert I.D. Number call CALL TOLL FREE TWO WORKING DAYS BEFORE YOU DIG UNDERGROUND SERVICE ALERT 1-800-227-2600

ENGINEER IN RESPONSIBLE CHARGE
 RICHARD D. McGRATH
 R.C.E. NO. 31952 EXPIRES 12-31-2000
 DATE 6-17-98



MARK	REVISIONS	APPR.	DATE
	MAC	MAC	

CITY OF RIVERSIDE, CALIFORNIA
 DEPARTMENT OF PUBLIC WORKS

APPROVED BY: [Signature] DATE: 6/14/98
 PRINCIPAL ENGINEER
 P.W. INSPECTION: [Signature] DATE: 6/14/98
 CHIEF P.W. ENGR
 PUBLIC UTILITIES: [Signature]

TRAFFIC SIGNAL MODIFICATION
BROCKTON AVENUE @ JURUPA AVENUE

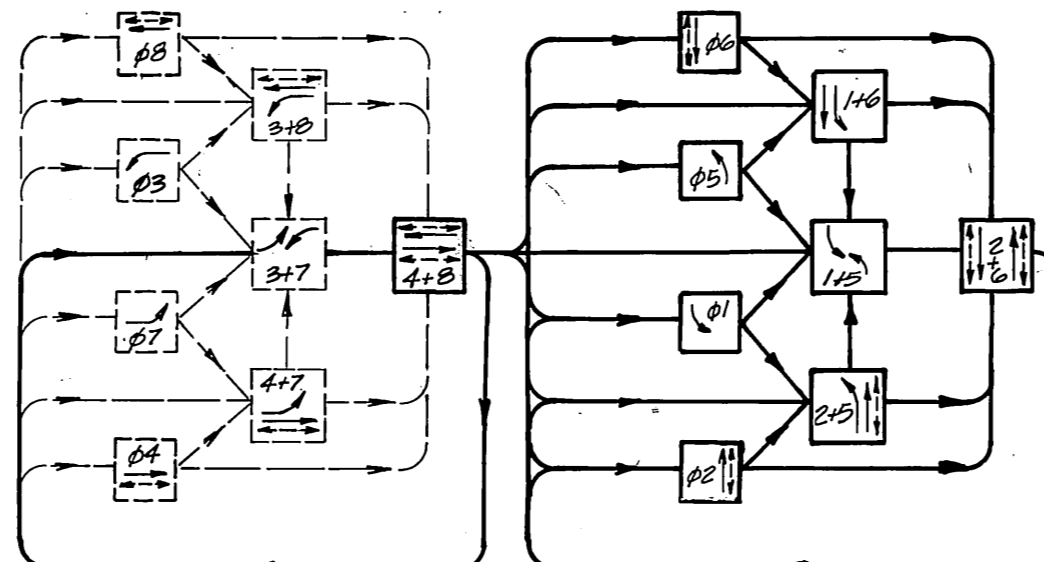
ACCT. NO. 430-541600-440303-35092
X-214A
 SHEET 1 OF 1
 FILE NAME: X214 DWG

SCALE 1:300

EXISTING PHASE DIAGRAM

Flashing Indication
 ØA Yellow ØB Red

PROPOSED PHASE DIAGRAM



FLASHING INDICATIONS: ALL RED.

PROPOSED FUTURE

EQUIPMENT SCHEDULE

LOCATION	STANDARD	VEHICLE HEADS			PEDESTRIAN HEADS			LUMINAIRE	INT ILLUM STREET NAME SIGN	REMARKS
		HEAD	MOUNTING	BACK PLATE	HEAD	MOUNTING	PPB			
A	1A 10'	1W3C (12")	TU-1-T	1	1W2C	SP-1-T	1			SALVAGE STD. AND VEH HEAD. PROVIDE AND INSTALL STD. AND EQUIPMENT INDICATED.
B	2A-3-70 255A 12A	1W3C (12") 1W3C (12")	MMS SI-1-T	1	1W2C	SP-1-T	1	200W		SALVAGE 58-T STD. AND PPB. PROVIDE AND INSTALL STD. AND EQUIPMENT INDICATED. RELOCATE OTHER EQUIPMENT TO NEW STD.
C	1A 10'	1W3C (12")	TU-1-T	1	1W2C	SP-1-T	1			SALVAGE STD. AND EQUIPMENT. PROVIDE AND INSTALL STD. AND EQUIPMENT INDICATED.
D	58J1848	1W3C (12") 1W3C	MMS SI-1-T	1	1W2C	SP-1-T	1	200W		PROVIDE AND INSTALL EQUIPMENT INDICATED.
E	1A 10'	2W3C	TU-2-T	2	1W2C	SP-1-T	1			SALVAGE STD. AND EQUIPMENT. PROVIDE AND INSTALL STD. AND EQUIPMENT INDICATED. ØA VEH. HEADS SHALL BE 12"
F	2A-3-70 255A 12A	1W3C (12") 1W3C (12")	MMS SI-1-T	1	1W2C	SP-1-T	1	200W		SEE REMARKS LOC. B
G	1A 10'	1W3C (12")	TU-1-T	1	1W2C	SP-1-T	1			SEE REMARKS LOCATION D. RELOCATE SIGNAL PLATE TO LOC. H
H	58J1848	1W3C (12") 1W3C	MMS SI-1-T	1	1W2C	SP-1-T	1	200W		PROVIDE AND INSTALL PPD HEAD. INSTALL SIGNAL PLATE FROM SALVAGED HEAD @ LOCATION G
I	PPB POST						1			PROVIDE AND INSTALL PPB AND POST

NOTES:
 ALL VEHICLE INDICATIONS SHALL HAVE 12" APPROVALS.
 ALL TYPE 1A STANDARDS SHALL BE ALUMINUM AND SHALL HAVE ANCHOR BOLT COVERS.
 PPB 2288 EXISTING 180V. SIGNAL Ø ØØV. S.C.T. SERVICES.

SALVAGE TYPE PDA 402 CONTROLLED AND TYPE 'M' CABINET. INSTALL NEW SYSTEMS CONTROLLED IN TYPE 'P' CABINET ON IMPROVED FOUNDATION.

INSTALL #6 PULLBOX

INSTALL 1/2" Ø 1/2" Ø

INSTALL 1/2" Ø 1/2" Ø

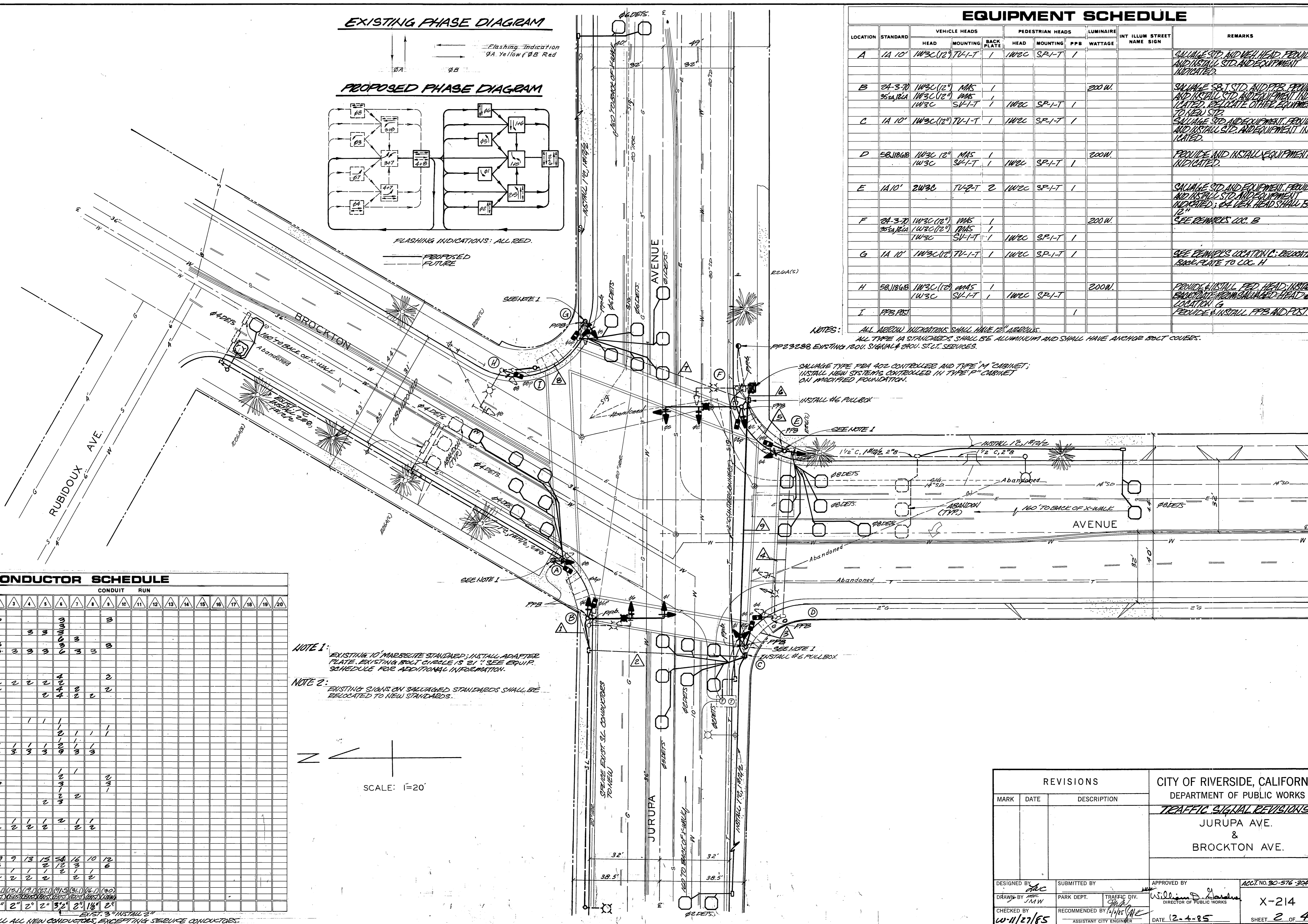
CONDUCTOR SCHEDULE

CONTROL FUNCTION	CONDUCTORS	CONDUIT RUN																			
		1	2	3	4	5	6	7	8	9	10	11	12	13	14	15	16	17	18	19	20
VEHICLE HEADS	#14 TW																				
PEDESTRIAN HEADS	#12 TW																				
PPD SIGNAL	#12 TW																				
TRUCK COMMON SERVICES	#10 TW																				
TRUCK COMMON SERVICES	#8 TW																				
TOTALS	#14 TW #12 TW #10 TW #8 TW	10	19	9	13	15	5A	16	10	12											

NOTE 1: EXISTING 10' MARQUEE STANDARD; INSTALL ADAPTER PLATE. EXISTING BOLT CIRCLE IS 21" SEE EQUIP. SCHEDULE FOR ADDITIONAL INFORMATION.

NOTE 2: EXISTING SIGNS ON SALVAGED STANDARDS SHALL BE RELOCATED TO NEW STANDARDS.

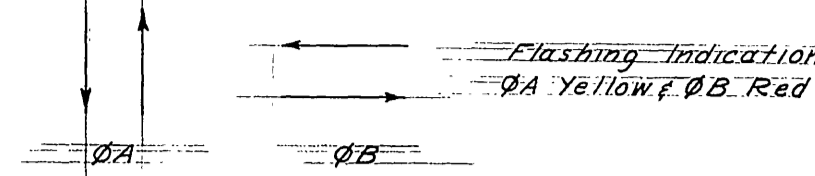
SCALE: 1"=20'



REVISIONS			CITY OF RIVERSIDE, CALIFORNIA DEPARTMENT OF PUBLIC WORKS	
MARK	DATE	DESCRIPTION	TRAFFIC SIGNAL REVISIONS	
			JURUPA AVE. & BROCKTON AVE.	
DESIGNED BY	AC	SUBMITTED BY	APPROVED BY	ACCT NO. 30-576-304-07
DRAWN BY	JMW	PARK DEPT.	TRAFFIC DIV.	X-214
CHECKED BY	W-11/27/85	RECOMMENDED BY	DATE	12-4-85
			SHEET 2 OF 4	

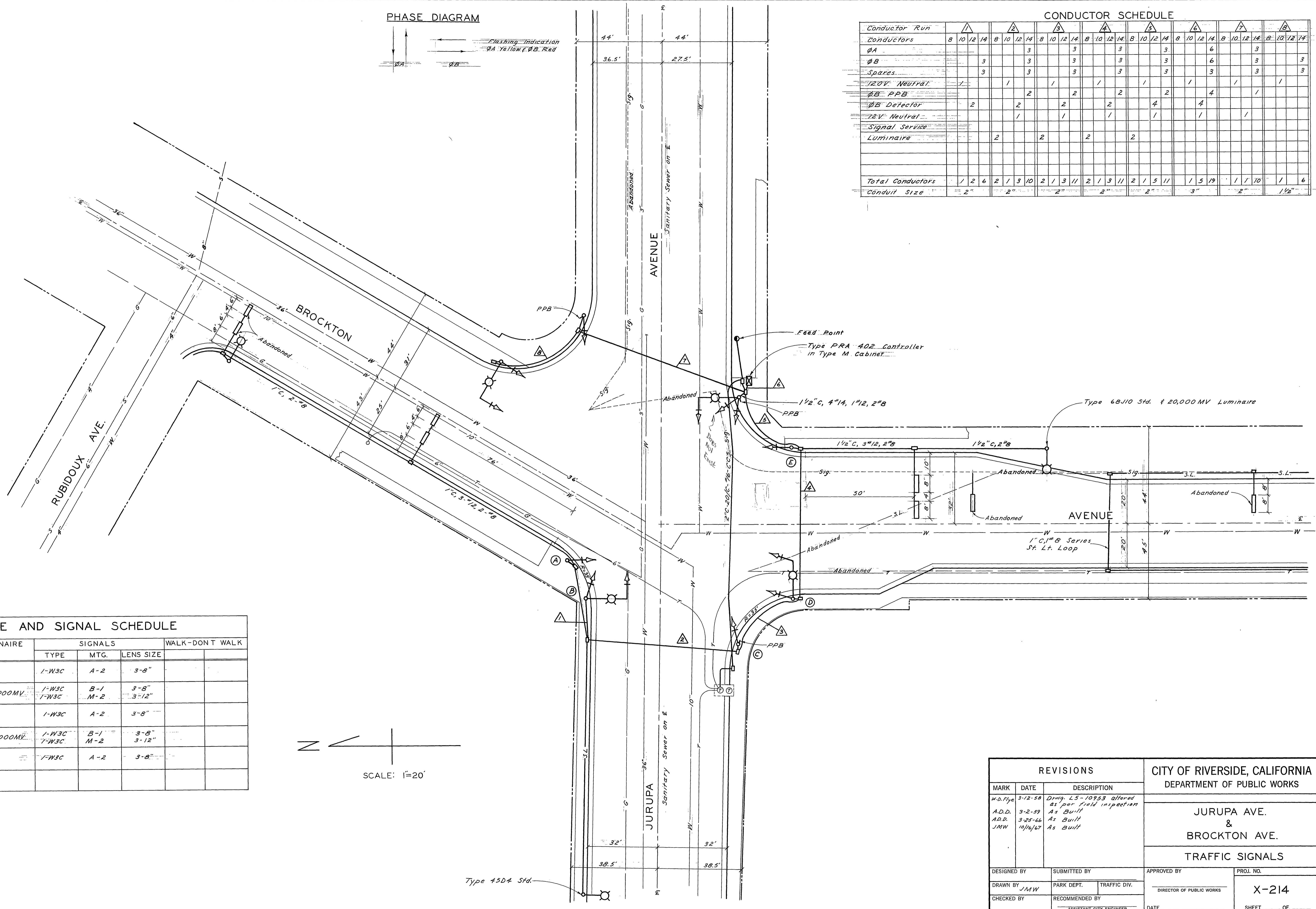
THE CONTRACTOR SHALL INSTALL ALL NEW CONDUCTORS, EXCEPTING SERVICE CONDUCTORS.

PHASE DIAGRAM

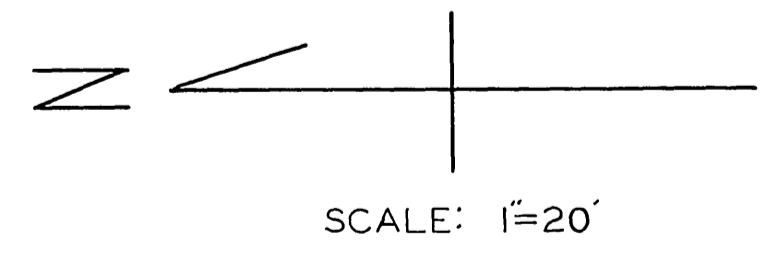


CONDUCTOR SCHEDULE

Conductor Run	A		B		C		D		E		F		G		H			
	8	10	12	14	8	10	12	14	8	10	12	14	8	10	12	14		
Conductors					3		3		3		3		3		6		3	
Spares			3		3		3		3		3		3		3		3	
120V Neutral	1				1		1		1		1		1		1		1	
48 PPB					2		2		2		2		2		4		4	
48 Detector	2				2		2		2		2		2		4		4	
72V Neutral					1		1		1		1		1		1		1	
Signal Service																		
Luminaire					2		2		2		2		2					
Total Conductors	1	2	6	2	1	3	10	2	1	3	11	2	1	5	11	1	5	
Conduit Size	2"		2"		2"		2"		2"		2"		3"		2"		1 1/2"	



LOCATION	STANDARD	LUMINAIRE	SIGNALS			WALK-DONT WALK	
			TYPE	MTG.	LENS SIZE		
(A)	334M1		1-W3C	A-2	3-8"		
(B)	58J10G18	20,000MV	1-W3C 1-W3C	B-1 M-2	3-8" 3-12"		
(C)	334M1		1-W3C	A-2	3-8"		
(D)	58J10G18	20,000MV	1-W3C 1-W3C	B-1 M-2	3-8" 3-12"		
(E)	Type 5798		1-W3C	A-2	3-8"		



REVISIONS			CITY OF RIVERSIDE, CALIFORNIA DEPARTMENT OF PUBLIC WORKS	
MARK	DATE	DESCRIPTION	<p style="text-align: center;">JURUPA AVE. & BROCKTON AVE.</p> <p style="text-align: center;">TRAFFIC SIGNALS</p>	
W.D. Flye	3-12-58	Drawn LS-10953 altered as per field inspection		
A.D.D.	3-2-59	As Built		
A.D.D.	3-25-66	As Built		
JMW	10/16/67	As Built		
DESIGNED BY	SUBMITTED BY	APPROVED BY	PROJ. NO.	
DRAWN BY JMW	PARK DEPT.	TRAFFIC DIV.	X-214	
CHECKED BY	RECOMMENDED BY	DATE	SHEET OF	
	ASSISTANT CITY ENGINEER			