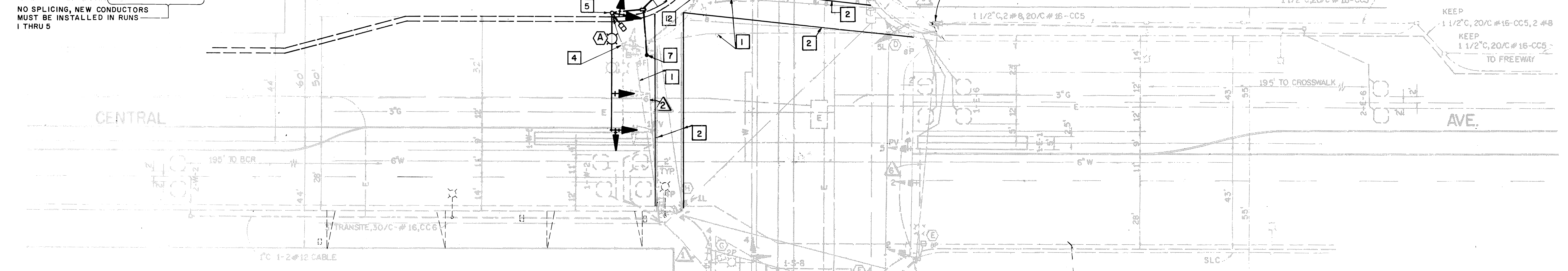


CONDUCTOR		TARI F							
AWG	CIRCUIT	1	2	3	4	5	6	7	8
0 1		3	3	3	3	3	3	3	3
0 2		3	3	3	3	3	3	3	3
0 3	4 8 0 R	3	3	3	3	3	3	3	3
0 4		3	3	3	3	3	3	3	3
0 5		3	3	3	3	3	3	3	3
0 6		3	3	3	3	3	3	3	3
0 7	PEP	2	2	2	2	2	2	2	2
0 8	4 8 0 R	2	2	2	2	2	2	2	2
0 9	PLU	1	1	1	1	1	1	1	1
0 10	PPB	1	1	1	1	1	1	1	1
0 11	4 8 0 R PPB	1	1	1	1	1	1	1	1
0 12	PPB	1	1	1	1	1	1	1	1
0 13		3	3	3	3	3	3	3	3
0 14		15	19	25	25	25	25	25	25
0 15	TOTAL	1	1	1	1	1	1	1	1
0 16	SPRKS	2	2	2	2	2	2	2	2
0 17	TOTAL	2	2	2	2	2	2	2	2
0 18	6 1 DETECTOR	2	2	2	2	2	2	2	2
0 19	4 8 0 R	1	1	1	1	1	1	1	1
0 20	5	1	1	1	1	1	1	1	1
0 21	6	1	1	1	1	1	1	1	1
0 22	TOTAL CABLES	3	3	3	3	3	3	3	3
0 23	LUMINAIRE	2	2	2	2	2	2	2	2
0 24	SIGNAL COMMON	1	1	1	1	1	1	1	1
0 25	SERVICE	2	2	2	2	2	2	2	2
0 26	NON 192	2	2	2	2	2	2	2	2
0 27	SPLIT 192 ON R/S	2	2	2	2	2	2	2	2

NO SPLICING, NEW CONDUCTORS MUST BE INSTALLED IN RUNS 1 THRU 5

POLE		SCHEDULE							
No.	TYPE	HEIGHT	SIG. M.A.	LUM. M.A.	LUMINAIRE	SIGNAL VEHICLE	MOUNTING PED.	PPB PHASE	REMARKS
(A)	26A-4-80 (N)	35'	45'(N)	12'(N)	400WHPSV(E)	MAS(E)	MAS(E)	4 (E)	USE EQUIPMENT FROM REMOVED POLE
(B)	1 (EXR)	10'	-	-	-	-	-	6 (E)	
(C)	56D(E)	CONC.	18'	8'	250WHPSV(E)	-	-	6 (E)	
(D)	1 (E)	10'	-	-	-	-	-	6 (E)	
(E)	24A-4-70 (E)	35'	45'	12'	400WHPSV	MAS(E)	MAS(E)	8 (E)	
(F)	1 (E)	10'	-	-	-	-	-	2 (E)	
(G)	56D(E)	30'	18'	8'	250WHPSV	-	-	2 (E)	
(H)	1 (E)	10'	-	-	-	-	-	4 (E)	
(I)	1 (E)	-	-	-	-	-	-	-	

(E) = EXISTING EQUIPMENT
 (N) = NEW EQUIPMENT
 P/L = PROG. VISIBILITY HEAD
 (R) = RELOCATED
 * 4-SECTION 12" HEAD (R,Y,GB,GA) GB RGA ON SIMULTANEOUSLY



GENERAL NOTES

- ALL TRAFFIC WORK SHALL BE DONE IN ACCORDANCE WITH STATE STANDARD PLANS AND SPECIFICATIONS DATED JULY 1984. CITY OF RIVERSIDE PUBLIC UTILITIES STREET LIGHTING SPECIFICATIONS NO. 119 SHALL BE USED FOR STREET LIGHTING WORK.
- EXISTING FOUNDATIONS AND PULL BOXES NOT TO BE REUSED SHALL BE REMOVED AS PART OF ROADWAY CONSTRUCTION.
- THE CITY OF RIVERSIDE INSPECTION OFFICE SHALL BE NOTIFIED 24 HOURS PRIOR TO THE START OF ANY WORK. (714) 787-7688
- PULL BOXES (#5) TO BE INSTALLED SHALL BE CONCRETE TYPE.
- ALL REMOVED ELECTRICAL EQUIPMENT SHALL BE SALVAGE AND DELIVERED TO THE CITY'S DESIGNATED STORAGE FACILITY.

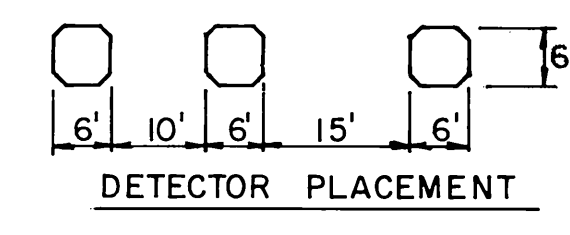
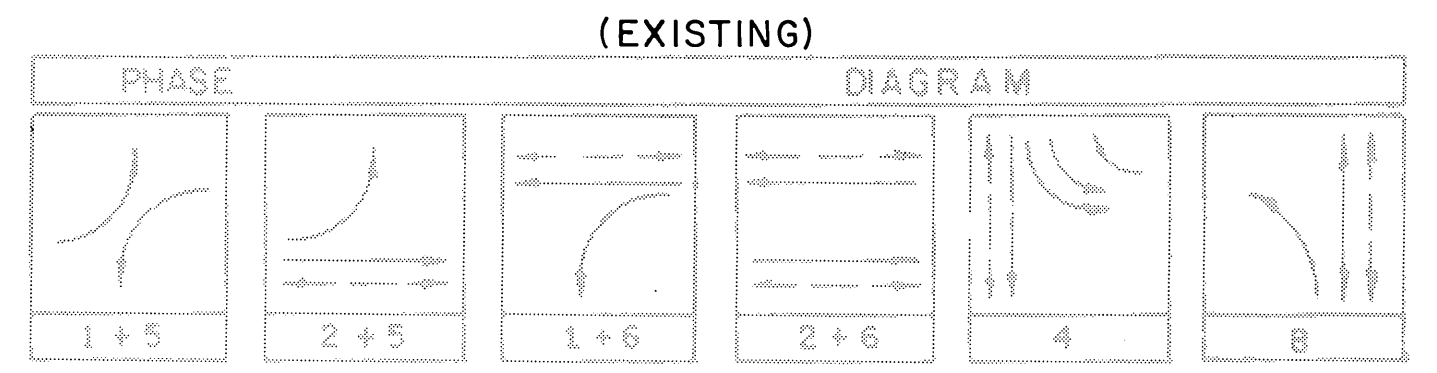
INSTALLATION NOTES

- REMOVE CROSS WALK STRIPE.
- PAINT CROSS WALK STRIPE.
- PAINT LANE STRIPE.
- REMOVE EXISTING TYPE 24A POLE. RELOCATE VEHICLE SIGNAL HEADS, PEDESTRIAN SIGNAL HEAD, LUMINAIRE & PPB TO NEW POLE LOCATION.
- INSTALL TYPE 26A WITH EQUIPMENT AS INDICATED.
- JOIN LIGHTING CONDUIT.
- JOIN SIGNAL CONDUIT.
- INSTALL TWO #8/600V CONDUCTORS (NEW).
- REMOVE EXISTING LT STD LOC I.
- INSTALL 1" C-1DL C. CABLE.
- INSTALL MAST ARM ON POWER POLE BY PUBLIC UTILITIES
- RELOCATION OF TYPE I STANDARD.

(EXISTING)

SENSOR	LOOP DETECTORS
1	1-E-1 45' TYPE C (1)
2	1-W-2 (4)
3	2-W-2 * (2)
4	1-N-4 (3)
5	2-N-4 (4)
6	3-N-4 EXIST. * (2)
7	1-S-8 (3)
8	2-S-8 (2)
9	3-S-8 EXIST. * (3)
10	1-W-5 45' TYPE C (1)
11	1-E-6 (4)
12	2-E-6 * (2)
13	4-N-4 (3)

* = 2-CHANNEL SENSOR WITH INTEGRAL ADJUSTABLE EXTENSION TIMERS, ONE INPUT TO CONTROLLER AND ONE INPUT FOR SAMPLING
 (1) = NUMBER OF LOOPS PER SENSOR.



Patrick O. Fiedler
 PATRICK O. FIEDLER C.E.
 NO. C-38123
 EXPIRES 3-31-96

PLANS & SPECIFICATIONS PREPARED BY:
FRED FIEDLER AND ASSOCIATES
 2322 WEST THIRD STREET
 LOS ANGELES, CALIFORNIA 90087
 PHONE: 381-7881

MARK	REVISIONS	APP. DATE
DESIGNED BY: FEA	DRAWN BY: MS	CHECKED BY: [Signature]

CITY OF RIVERSIDE
 PUBLIC WORKS DEPARTMENT

APPROVED BY: [Signature]	DATE: 8/15/86
APPROVED BY: [Signature]	DATE: 8/21/86
APPROVED BY: [Signature]	DATE: 8/21/86
APPROVED BY: [Signature]	DATE: 9-12-86

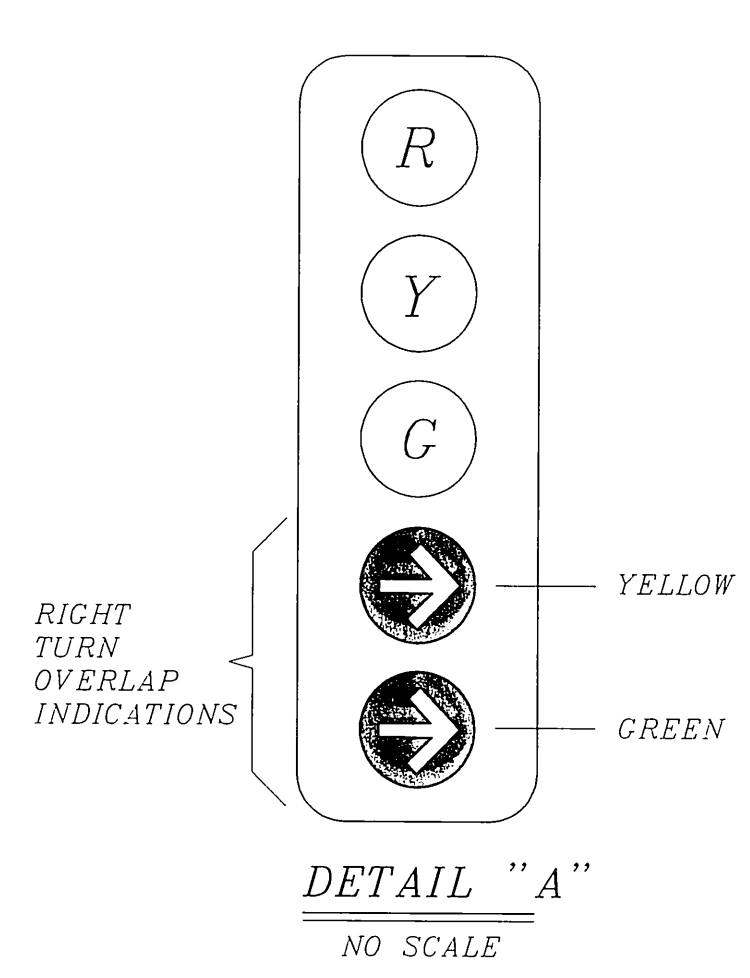
TRAFFIC SIGNAL PLAN
 CENTRAL AVE. AT
 RIVERSIDE AVE.

ACCOUNT NO.
 X-221A
 R-2802
 SHEET 2 of 2

HORIZ. SCALE: 1" = 20' VERT. SCALE: 1" = 20'

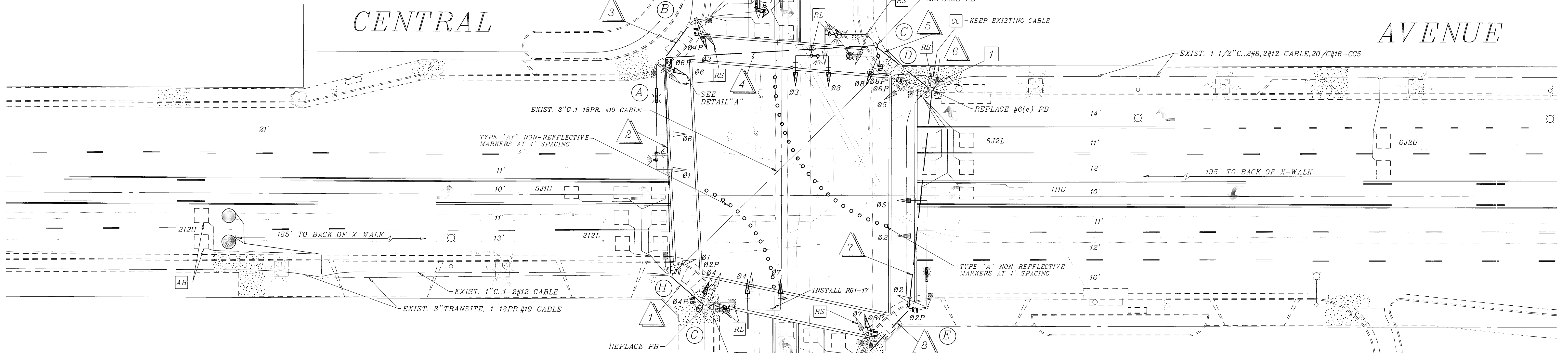
CONDUCTOR		TABLE							
CONTROL FUNCTION	CONDUCTORS	CONDUCTOR				RUNS			
		1	2	3	4	5	6	7	8
VEHICLE & PEDESTRIAN HEADS, PEDESTRIAN PUSH BUTTONS, SPARES & COMMONS	12 WIRE IMSA 9 WIRE IMSA 5 WIRE IMSA 3 WIRE IMSA	1 1 1 1	1 1 1 1	2 2 2 2	3 2 2 2	4 4 4 4	1 1 1 1	1 1 1 1	1 1 1 1
DETECTOR CABLE	#12/2	-	-	-	-	-	-	-	-
PHASE 1		-	-	-	-	-	-	-	-
PHASE 2		-	-	-	-	-	-	-	-
PHASE 3		-	-	-	-	-	-	-	-
PHASE 4		-	-	-	-	-	-	-	-
PHASE 5		-	-	-	-	-	-	-	-
PHASE 6		-	-	-	-	-	-	-	-
PHASE 7		-	-	-	-	-	-	-	-
PHASE 8		-	-	-	-	-	-	-	-
TOTALS		-	-	-	-	-	-	-	-
INTERCONNECT CABLE	#19	-	-	-	-	-	-	-	-
I.I.S.N.S.	#12	2	2	2	2	2	2	2	2
LUMINAIRES	#8	2	2	2	2	2	2	2	2
SIGNAL SERVICE	#6	-	-	-	-	-	-	-	-
EMER. VEH PRE-EMPT	4-#20	-	-	-	-	-	-	-	-
CONDUIT SIZE		1.5"	2.5"	2.5"	3"	3"	2-3"	2.5"	2"
		(E)	(E)	(E)	(E)	(E)	(N)	(E)	(E)

NOTES:
 1. SIGNAL SYSTEM SHALL HAVE NEW CABLES AND CONDUCTORS; SEE CONTRACT SPECIAL PROVISIONS FOR ADDITIONAL INFORMATION ON I.M.S.A. CABLE.
 2. "E" INDICATES EXISTING CONDUIT; "N" INDICATES NEW CONDUIT.



SIGNAL STANDARD		LUMINAIRE		I.I.S.N.S.		SIGNAL MOUNTINGS			PPB	REMARKS
NO.	TYPE	HCHT	M.A.	M.A.	H.P.S.V.	VEHICLE	PEDESTRIAN	AUDIBLE	PHASE	
(A)	28A-4-80(E)	35'	45'(E)	12'(E)	400W(E)	RIVERSIDE (N)	AVE 2500	MAS(E) MAS(E) SV-1-T(N)		EX SV-1-T SEE DETAIL 'A': SV-1-T(N) ROTATE EX. PED HEAD= 06P
(B)	1A(E)	10'						TV-1-T(N) SP-1-T(E)	((C)) (N)	6(E) ROTATE EX. PED HEAD= 04P
(C)	24-4-80(N)	30'	35'(N)	12'(N)	250W(R)	CENTRAL (N)	AVE 3000	MAS(N) MAS(N) SV-1-T(N)		
(D)	1A(E)	10'						TV-1-T(E) SP-1-T(E)	((C)) (N)	6(E) ROTATE EX. PED HEAD= 06P
(E)	28A-4-70(E)	35'	45'(E)	12'(E)	400W(E)	RIVERSIDE (N)	AVE 2500	MAS(E) MAS(E) SV-1-T(E)		ROTATE EX. PED HEAD= 02P
(F)	1A(E)	10'						TV-1-T(N) SP-1-T(E)	((C)) (N)	2(E) ROTATE EX. PED HEAD= 08P
(G)	24-4-80(N)	30'	35'(N)	12'(N)	250W(R)	CENTRAL (N)	AVE 3000	MAS(N) MAS(N) SV-1-T(N)		
(H)	1A(E)	10'						TV-1-T(E) SP-1-T(E)	((C)) (N)	4(E) ROTATE EX. PED HEAD= 02P

NOTES:
 1. NEW VEHICULAR HEADS SHALL HAVE 12" LENSES.
 2. NEW LEFT TURN HEADS SHALL HAVE ALL ARROWS.
 3. PROVIDE AND INSTALL NEW EQUIPMENT AS INDICATED BY (N).
 4. ((C)) OR ((P)) - INDICATES AUDITORY PEDESTRIAN SIGNAL TO BE INSTALLED. ((C)) INDICATES CUCKOO SOUND; ((P)) INDICATES PEEP-PEEP SOUND.
 5. EQUIPMENT NOT TO BE REUSED SHALL BE SALVAGED.



PAVEMENT DELINEATION

- Indicates striping and pavement markings to be installed.
- Indicates striping and pavement markings to remain.
- Indicates striping and pavement markings to be removed.

NOTE: All pavement delineation work shall be performed by City of Riverside forces; See Special Provisions.

GENERAL NOTES

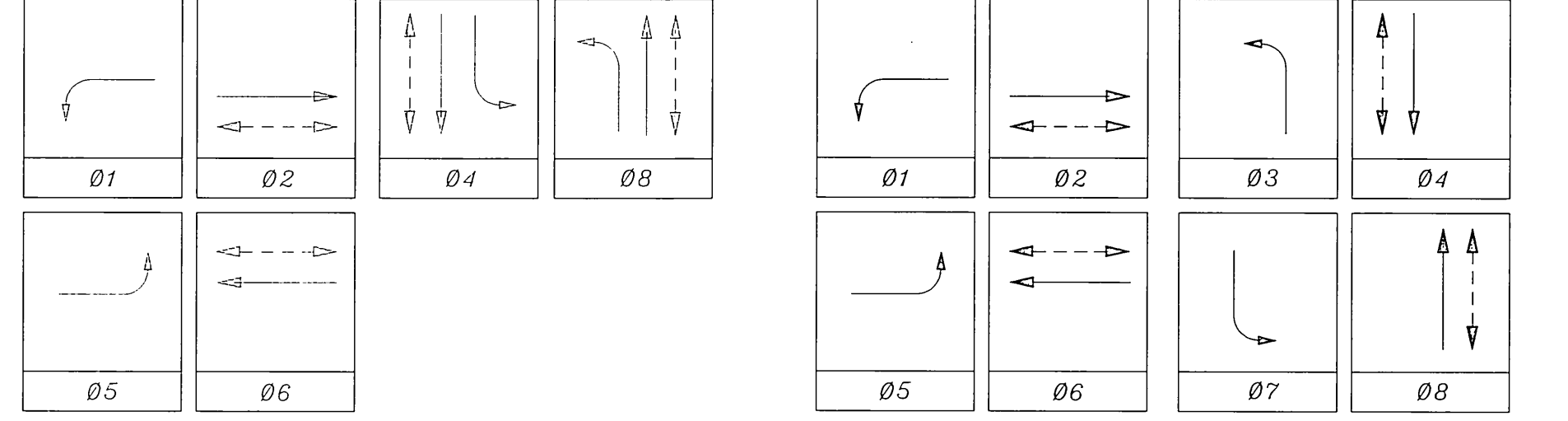
- Detector loops shall be installed in the presence of the Traffic Engineer or his representative.
- All signing, striping, and pavement marking requirements shall be completed at least one day prior to turn-on.
- Typical detector loop spacing: 10' & 15'.
- An "A" or "C-10" license is required.

CONSTRUCTION NOTE

- Install 1 ea. City furnished Model 170 controller unit housed in Type 332 cabinet.

IMPORTANT NOTICE
 Section 4216/4217 of the Government Code requires a dig alert identification Number to be issued before a "Permit to Excavate" will be valid. For your Dig Alert ID Number call CALL TOLL FREE TWO WORKING DAYS BEFORE YOU DIG UNDERGROUND SERVICE ALERT 1-800-227-2600

EXISTING PHASE DIAGRAM PROPOSED PHASE DIAGRAM



FLASHING OPERATION SHALL BE ALL RED.

DETECTOR SCHEDULE

LOOP DESIGNATION	NUMBER OF LOOPS
111U	3
212U	2
212L	4
315U	3
416U	1
416L	2
511U	3
6J2U	2
6J2L	4
7J5U	3
7J5L	3
8J6U	2
8J6L	4

FEDERAL AID PROJECT NO. CMLN-5058(20)
 CONTRACT TE-96-5

ENGINEER IN RESPONSIBLE CHARGE
 Richard O. McGrath
 RICHARD D. McGRATH
 R.C.E. No. 31952
 DATE 5-30-96

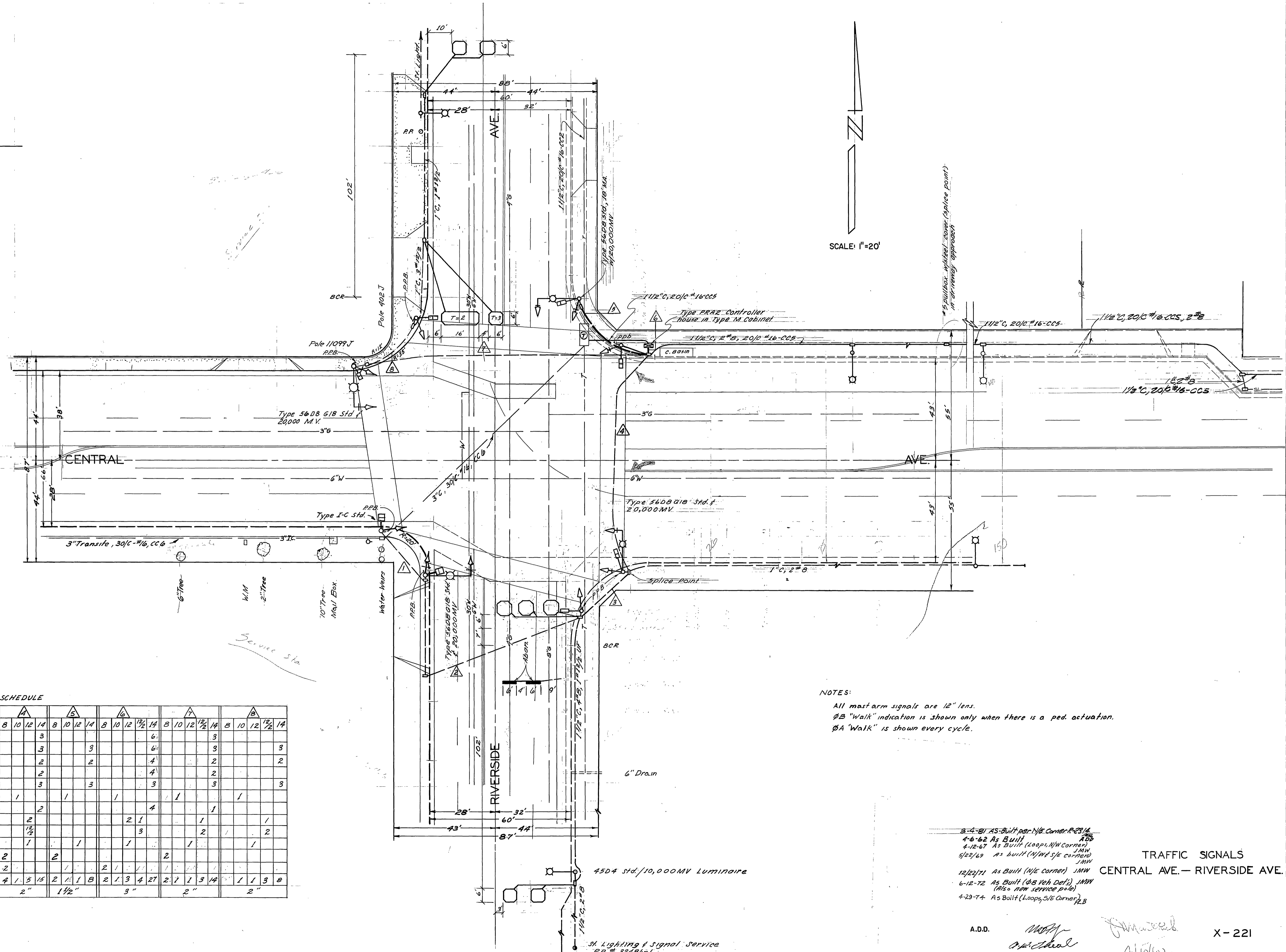
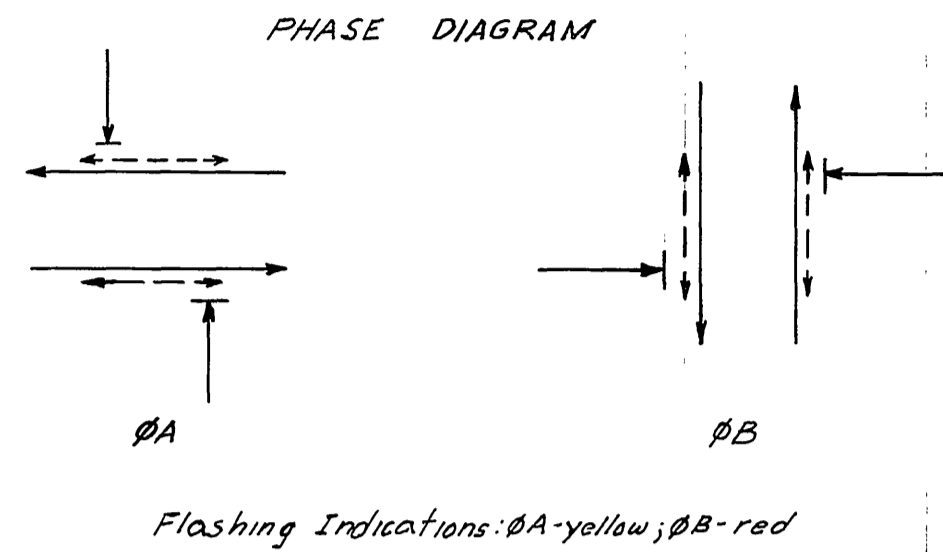


MARK	REVISIONS	APPR	DATE

CITY OF RIVERSIDE, CALIFORNIA
 DEPARTMENT OF PUBLIC WORKS
 APPROVED BY: [Signature]
 PRINCIPAL ENGINEER: [Signature]
 P.W. INSPECTION: [Signature]
 TRAFFIC DIVISION: [Signature]
 CHIEF P.W. ENGR: [Signature]
 PUBLIC UTILITIES: [Signature]

TRAFFIC SIGNAL MODIFICATION
CENTRAL AVE. @ RIVERSIDE AVE.
 SCALE: 1" = 20'

ACCT. NO. 430-541600-440125-35060
X-221
 SHEET 1 OF 1
 FILE NAME: X221.DWG



NOTES:
 All mast arm signals are 12" lens.
 ØB "Walk" indication is shown only when there is a ped. actuation.
 ØA "Walk" is shown every cycle.

CONDUCTOR SCHEDULE

CONDUCTOR RUN	1		2		3		4		5		6		7		8					
CONDUCTORS	8	10	12	14	8	10	12	14	8	10	12	14	8	10	12	14	8	10	12	14
ØA			3				3				3				3				3	
ØB				3			3				3				3				3	
ØA W-DW				2			2				2				2				2	
ØB W-DW		2				2				2				2				2		
Spares		3				3				3				3				3		
110V Neutral	1				1				1				1				1			
ØB P.P.B.		1				1				2				4				1		
ØB Def.						2				2				2				1		
ØB Call Det.						1 1/2				1 1/2				3				2		
12V Neutral	1					1				1				1				1		
Luminaires			2			2				2				2				2		
Signal Service			2			2				2				2				2		
TOTAL CONDUCTORS	1	1	9	2	1	1	14	4	1	3	14	4	1	5	16	2	1	1	8	2
Conduit Size	1 1/2"		2"		2"		2"		1 1/2"		3"		2"		2"		2"		2"	

- 3-4-81 As Built per N/E Corner P23/A
- 4-6-62 As Built
- 4-12-67 As Built (Loop, NW corner)
- 5/22/69 As Built (NW side corner)
- 12/23/71 As Built (N/E corner)
- 6-12-72 As Built (ØB Veh Def's) (Also new service pole)
- 4-23-74 As Built (Loop, S/E corner)

A.D.D. *[Signature]* *[Signature]* X-221
 4/10/62

CONDUCTOR		TABLE							
AWG	CIRCUIT	RUNS							
		1	2	3	4	5	6	7	8
Ø 1		3	3	3	3	3	3	3	3
Ø 2		3	3	3	3	3	3	3	3
Ø 4 Ø 8 *		3	3	3	3	3	3	3	3
Ø 5		3	3	3	3	3	3	3	3
Ø 6		3	3	3	3	3	3	3	3
Ø 2 PED		2	2	2	2	2	2	2	2
Ø 4 Ø 8 PED *		2	2	2	2	2	2	2	2
Ø 6 PED		2	2	2	2	2	2	2	2
Ø 2 PPB		1	1	1	1	1	1	1	1
Ø 4 Ø 8 PPB *		1	1	1	1	1	1	1	1
Ø 6 PPB		1	1	1	1	1	1	1	1
SPARES		3	3	3	3	3	3	3	3
TOTAL		9	15	19	25	25	18	9	45
# 12	PPB COMMON	1	1	1	1	1	1	1	2
	SPARES	1	1	1	1	1	1	1	2
	TOTAL	2	2	2	2	2	2	1	4
# 14	Ø 1 DETECTOR								1
	Ø 2 "		2	2	2	2			2
	Ø 4 Ø 8 "			4	4	3	3	7	
	Ø 5 "		1	1	1	1			1
	Ø 6 "								1
	TOTAL CABLES		3	3	7	7	3	3	12
# 8	LUMINAIRE	2	2	2	2	2	2		
# 10	SIGNAL COMMON	1	1	1	1	1	1	1	2
# 8	SERVICE					2	4	2	
CONDUIT SIZE		1 1/2"	2"	2 1/2"	2 1/2"	3"	3"	2 1/2"	2"
* SPLIT PHASE ON RIVERSIDE AVE.									

RIVERSIDE AVE.

		STANDARD			POLE		SCHEDULE			REMARKS	
No.	TYPE	HEIGHT	SIG.M.A.	LUM.M.A.	LUMINAIRE	SIGNAL MOUNTING		PPB			
		VEHICLE		PED.		PHASE					
(A)	24A-4-70 (N)	35'	35'	12'	400WHP(VN)	MAS(N)	MAS(E)	SV-1-T (E)	SP-1-T (E)	4 (E)	USE EQUIPMENT FROM REMOVED POLE. INSTALL NEW SV-1-T
(B)	I (E)	10'						TV-1-T (E)	SP-1-T (E)	6 (N)	INSTALL PPB
(C)	56D(E)	CONC.	18'	8'	250WHP(VN)	MAS(N)	MAS(E)	SV-1-T (E)	SP-1-T (E)	6 (N)	REPLACE LUMINAIRE INSTALL PPB
(D)	I (E)	10'						TV-1-T (N)	SP-1-T (E)	6 (E)	REPLACE SIGNAL HEAD & MTG. Ø 5 L.T.
(E)	24A-4-70 (N)	35'	45'	12'	400WHP(VN)	MAS(N)	MAS(E)	SV-1-T (E)	SP-1-T (E)	8 (E)	USE EQUIPMENT FROM REMOVED POLE.
(F)	I (E)	10'						TV-1-T (E)	SP-1-T (E)	2 (N)	INSTALL PPB
(G)	56D(E)	30'	18'	8'	250WHP(VN)	MAS(N)	MAS(E)	SV-1-T (E)	SP-1-T (E)	2 (N)	REPLACE LUMINAIRE, INSTALL PPB
(H)	I (E)	10'						TV-1-T (N)	SP-1-T (E)	4 (E)	REPLACE SIGNAL HEAD & MTG. Ø 1 L.T.

(E) = EXISTING EQUIPMENT TO BE REVISED
 (N) = NEW EQUIPMENT
 PV = PROG. VISIBILITY HEAD
 * 4-SECTION 12" HEAD (R,Y,GB,GA) GB & GA ON SIMULTANEOUSLY

INSTALL FULL ACTUATED 6-PHASE CONTROLLER WITH - DETECTOR SENSORS AND INTERFACE - IN A TYPE P CABINET. MODIFY TYPE TYPE 'M' FOUNDATION.

INSTALL 2-PAIR #19 CABLE SEE NOTE 4 KEEP

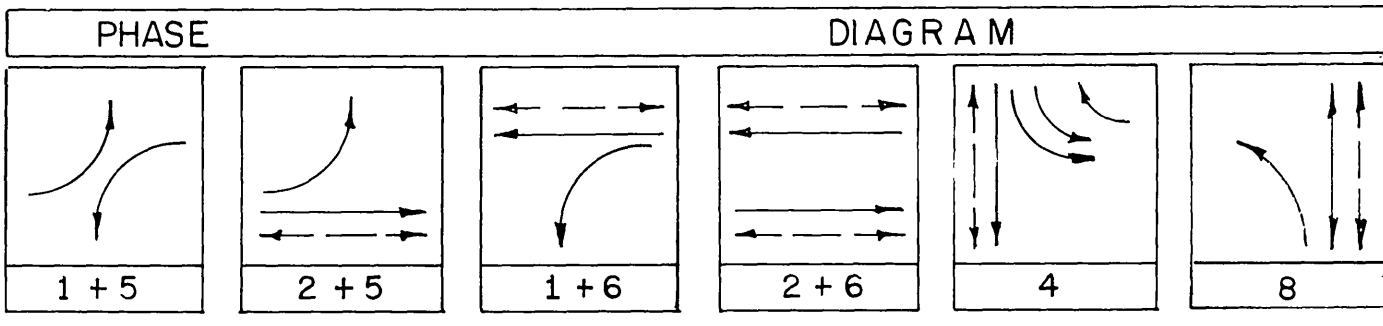
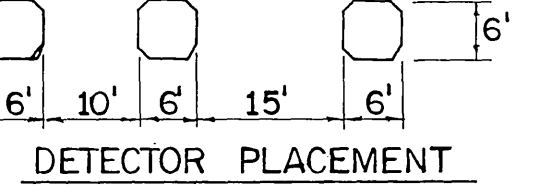
REPLACE EXIST. PB. W/Ø 6 PB & INTERCONNECT RUN 1 1/2" C. INTO NEW CONTROLLER

REMOVE TYPE 56 POLE SEE NOTE 3

SPLICE 3-S-4 RUN 2 # 8 LIGHTING SERVICE TO POLE (E), RUN 2 # 8 SIGNAL SERVICE TO CONTROLLER.

SENSOR TABLE	
SENSOR	LOOP DETECTORS
1	1-E-1 45' TYPE C (1)
2	1-W-2 (4)
3	2-W-2 * (2)
4	1-N-4 (3)
5	2-N-4 (4)
6	3-N-4 EXIST. * (2)
7	1-S-8 (3)
8	2-S-8 (2)
9	3-S-8 EXIST. * (3)
10	1-W-5 45' TYPE C (1)
11	1-E-6 (4)
12	2-E-6 * (2)
13	4-N-4 (3)

* = 2-CHANNEL SENSOR WITH INTEGRAL ADJUSTABLE EXTENSION TIMERS. ONE INPUT TO CONTROLLER AND ONE INPUT FOR SAMPLING.
 () = NUMBER OF LOOPS PER SENSOR.



- NOTES
- ABANDON EXISTING CONDUIT EXCEPT WHERE NOTED OTHERWISE. REMOVE AND DO NOT REUSE CONDUCTORS FROM ABANDONED CONDUIT.
 - PRESSURE PAD DETECTORS SHOWN ARE ABANDONED.
 - REMOVE FOUNDATION SUFFICIENTLY TO REPLACE SURFACE MATERIAL.
 - REMOVE EXISTING CONTROLLER TYPE M CABINET AND FOUNDATION COMPLETE. PROTECT INTERCONNECT AND SERVICE CONDUITS.
 - FOR ADDITIONAL INFORMATION SEE PLAN NO. X-221.
 - REBUILD EXISTING TUBE TYPE PEDESTRIAN SIGNALS.

MOHLE, PERRY & ASSOC. DESIGN ENGR. R.C.E. 10692 DATE 10/9/80

CITY OF RIVERSIDE, CALIFORNIA DEPARTMENT OF PUBLIC WORKS

APPROVED BY: [Signature] DATE: 10/12/80

PRINCIPAL ENGINEER: [Signature] DATE: 10/12/80

PARK DEPARTMENT: [Signature] DATE: 10/12/80

TRAFFIC DIVISION: [Signature] DATE: 10/12/80

CHIEF P.W. ENGR.: [Signature] DATE: 10/12/80

PUBLIC UTILITIES: [Signature] DATE: 10/12/80

TRAFFIC SIGNAL PLAN CENTRAL AVE. AT RIVERSIDE AVE.

PROJECT NO. [Blank]

SHEET 48 OF 50

FILE NO. [Blank]

HORIZ. SCALE: 1" = 20' VERT. SCALE: 1" = [Blank]

CONDUCTOR	TABLE									
	AWG	CIRCUIT	1	2	3	4	5	6	7	8
# 14	Ø 1		3	3	3	3	3	3	3	3
	Ø 2		3	3	3	3	3	3	3	3
	Ø 4 & Ø 8 *		3	3	3	6	6	3	3	9
	Ø 5		3	3	3	3	3	3	3	3
	Ø 6		3	3	3	3	3	3	3	3
	Ø 2 PED		2	2	2	2	2	2	2	4
	Ø 4 & Ø 8 PED *		2	2	2	2	2	2	2	4
	Ø 6 PED		2	2	2	2	2	2	2	2
	Ø 2 PPB		1	1	1	1	1	1	1	2
	Ø 4 & Ø 8 PPB *		1	1	1	2	2	1	1	4
	Ø 6 PPB		1	1	1	2	2	1	1	2
	SPARES		3	3	3	3	3	3	3	6
	TOTAL		9	15	19	25	26	18	9	45
	# 12	PPB COMMON		1	1	1	1	1	1	1
SPARES			1	1	1	1	1	1	1	2
TOTAL			2	2	2	2	2	2	1	4
# 2-#12 CABLE	Ø 1 DETECTOR		1	1	1	1	1	1	1	1
	Ø 2 "		2	2	2	2	2	2	2	2
	Ø 4 & Ø 8 "		4	4	4	4	3	3	7	7
	Ø 5 "		1	1	1	1	1	1	1	1
	Ø 6 "		1	1	1	1	1	1	1	1
TOTAL CABLES		3	3	7	7	3	3	12	12	
# 8 LUMINAIRE			2	2	2	2	2	2	2	2
	# 10 SIGNAL COMMON		1	1	1	1	1	1	1	2
# 8 SERVICE			2	2	2	2	2	2	2	2
	CONDUIT SIZE		1 1/2"	2 1/2"	2 1/2"	3"	3"	2 1/2"	2"	2'-3"

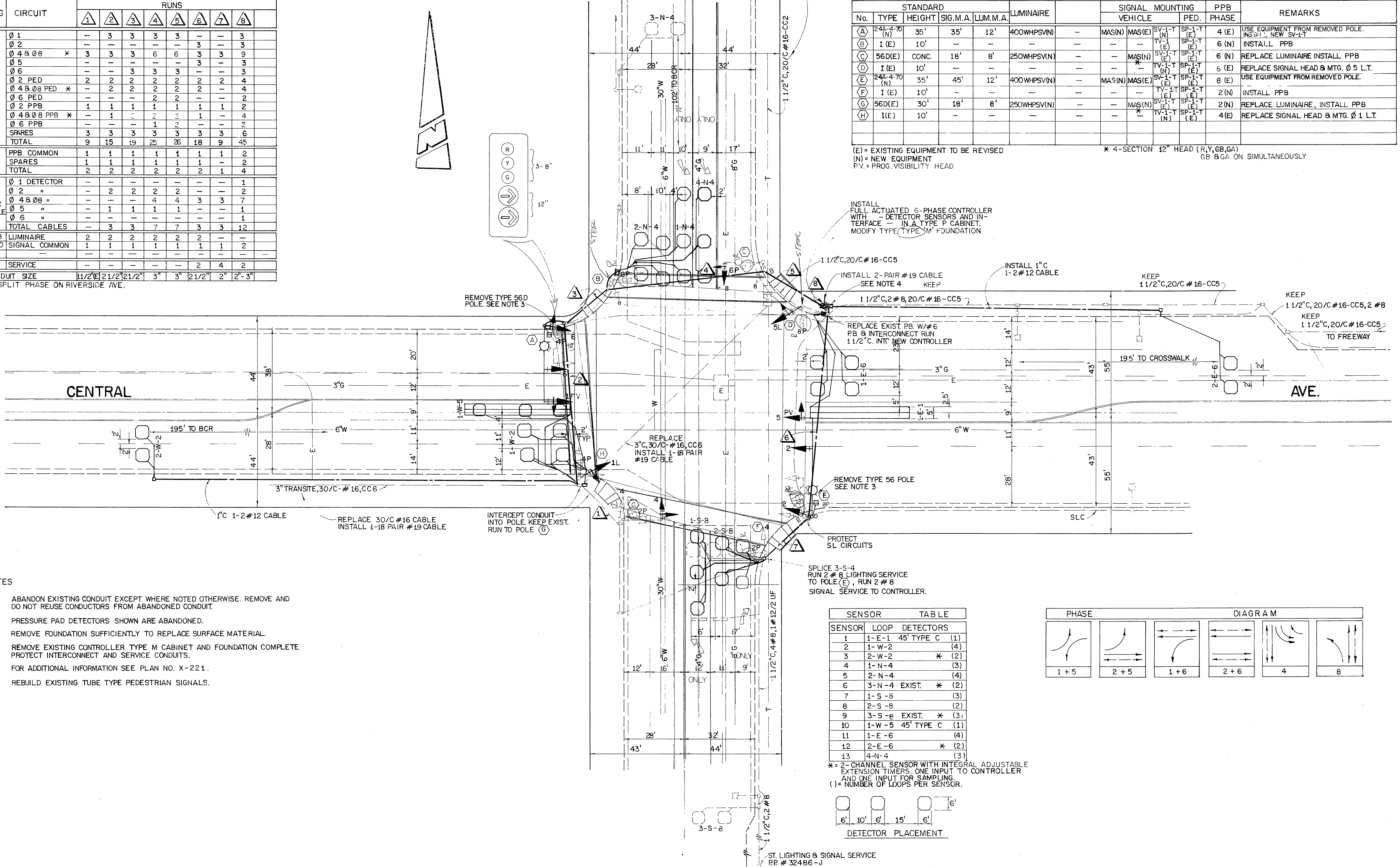
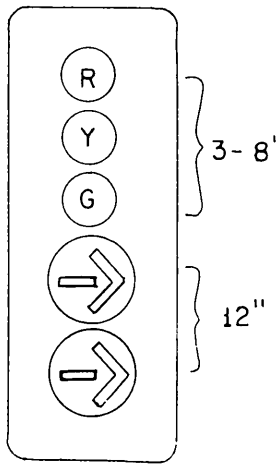
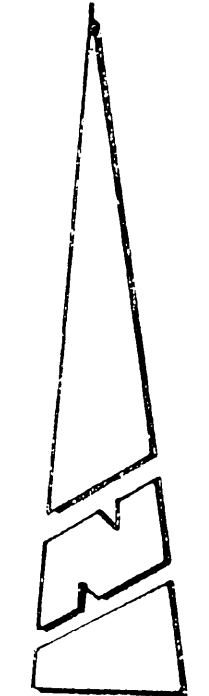
* SPLIT PHASE ON RIVERSIDE AVE.

RIVERSIDE AVE.

REPLACE #16 CABLE
INSTALL 1-18 PAIR #19
CABLE

STANDARD	POLE				SCHEDULE				REMARKS
	No.	TYPE	HEIGHT	SIG.M.A.	LUM.M.A.	LUMINAIRE	SIGNAL MOUNTING VEHICLE	PPB PHASE	
(A)	24A-4-70 (N)	35'	35'	12'	400WHPSVN	MAS(N) MAS(E)	SV-1-T (N) SP-1-T (E)	4 (E)	USE EQUIPMENT FROM REMOVED POLE. INSTALL NEW SV-1-T
(B)	I (E)	10'	-	-	-	-	TV-1 (E) SP-1-T (E)	6 (N)	INSTALL PPB
(C)	56D(E) CONC.	18'	8'	8'	250WHPSVN	MAS(N)	SV-1-T (E) SP-1-T (E)	6 (N)	REPLACE LUMINAIRE INSTALL PPB
(D)	I (E)	10'	-	-	-	-	TV-1-T (E) SP-1-T (E)	5 (E)	REPLACE SIGNAL HEAD & MTG. Ø 5 L.T.
(E)	24A-4-70 (N)	35'	45'	12'	400WHPSVN	MAS(N) MAS(E)	SV-1-T (N) SP-1-T (E)	8 (E)	USE EQUIPMENT FROM REMOVED POLE.
(F)	I (E)	10'	-	-	-	-	TV-1-T (E) SP-1-T (E)	2 (N)	INSTALL PPB
(G)	56D(E)	30'	18'	8'	250WHPSVN	MAS(N)	SV-1-T (E) SP-1-T (E)	2 (N)	REPLACE LUMINAIRE, INSTALL PPB
(H)	I (E)	10'	-	-	-	-	TV-1-T (N) SP-1-T (E)	4 (E)	REPLACE SIGNAL HEAD & MTG. Ø 1 L.T.

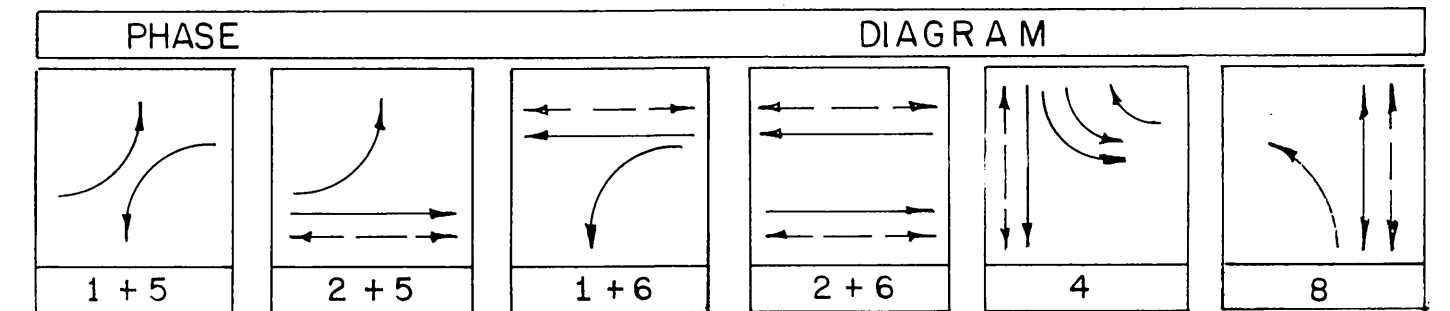
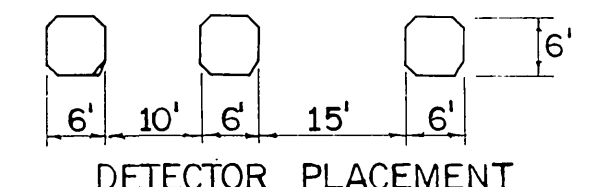
(E) = EXISTING EQUIPMENT TO BE REVISED
(N) = NEW EQUIPMENT
PV = PROG. VISIBILITY HEAD
* 4-SECTION 12" HEAD (R,Y,GB,GA)
GB & GA ON SIMULTANEOUSLY



- NOTES
- ABANDON EXISTING CONDUIT EXCEPT WHERE NOTED OTHERWISE. REMOVE AND DO NOT REUSE CONDUCTORS FROM ABANDONED CONDUIT.
 - PRESSURE PAD DETECTORS SHOWN ARE ABANDONED.
 - REMOVE FOUNDATION SUFFICIENTLY TO REPLACE SURFACE MATERIAL.
 - REMOVE EXISTING CONTROLLER TYPE M CABINET AND FOUNDATION COMPLETE. PROTECT INTERCONNECT AND SERVICE CONDUITS.
 - FOR ADDITIONAL INFORMATION SEE PLAN NO. X-221.
 - REBUILD EXISTING TUBE TYPE PEDESTRIAN SIGNALS.

SENSOR	LOOP	DETECTORS
1	1-E-1	45' TYPE C (1)
2	1-W-2	(4)
3	2-W-2	* (2)
4	1-N-4	(3)
5	2-N-4	(4)
6	3-N-4	EXIST. * (2)
7	1-S-8	(3)
8	2-S-8	(2)
9	3-S-8	EXIST. * (3)
10	1-W-5	45' TYPE C (1)
11	1-E-6	(4)
12	2-E-6	* (2)
13	4-N-4	(3)

* = 2-CHANNEL SENSOR WITH INTEGRAL ADJUSTABLE EXTENSION TIMERS. ONE INPUT TO CONTROLLER AND ONE INPUT FOR SAMPLING.
(1) = NUMBER OF LOOPS PER SENSOR.



NPA MOHLE, PERRY & ASSOC. DESIGN ENGR. R.C.E. 10692 DATE

PREPARED BY: R. H. Miller Oct. 9, 1980

MARK	REVISIONS	APPR. DATE

CITY OF RIVERSIDE, CALIFORNIA
DEPARTMENT OF PUBLIC WORKS

APPROVED BY: [Signature] DATE: 12/18/80
PRINCIPAL ENGINEER

APPROVED BY: [Signature] DATE: 12/18/80
DIRECTOR OF PUBLIC WORKS

TRAFFIC SIGNAL PLAN
CENTRAL AVE. AT
RIVERSIDE AVE.

HORIZ. SCALE: 1" = 20'
VERT. SCALE: 1" = 6'

PROJECT NO. _____

SHEET 48 OF 50

FILE NO. _____