

POLE SCHEDULE											
No.	STANDARD				LUMINAIRE HPS	ISNS LEGEND	SIGNAL MOUNTING			PPB PHASE	REMARKS
	TYPE	HGT.	SIG. M.A.	LUM. M.A.			VEHICLE	PED	AUDIBLE		
A	1A	10'	-	-	-	-	TV-1-T	SP-1-T	((P))	#6	
B	24-4-70	30'	35'	12'	250W	RIVERSIDE Ave. 6500	2-MAS	SV-2-T	SP-1-T	((P))	
C	PPB	40"	-	-	-	-	-	-	-	#2	
D	18-2-80	17'	30'	-	-	ARLINGTON Ave. 3500	MAS	SV-2-TD	SP-2-T	((P)) ((C))	#2 #4 5-SECTION HEAD, PHASE 4
E	26-4-70	30'	45'	12'	250W	RIVERSIDE Ave. 6500	2-MAS	SV-1-T	SP-2-T	((P)) ((C))	
F	PPB	40"	-	-	-	-	-	-	-	#4 #6	

PEDESTRIAN AUDIBLES: ((C))=CUCKOO (NORTH/SOUTH), ((P))=PEEP PEEP (EAST/WEST)

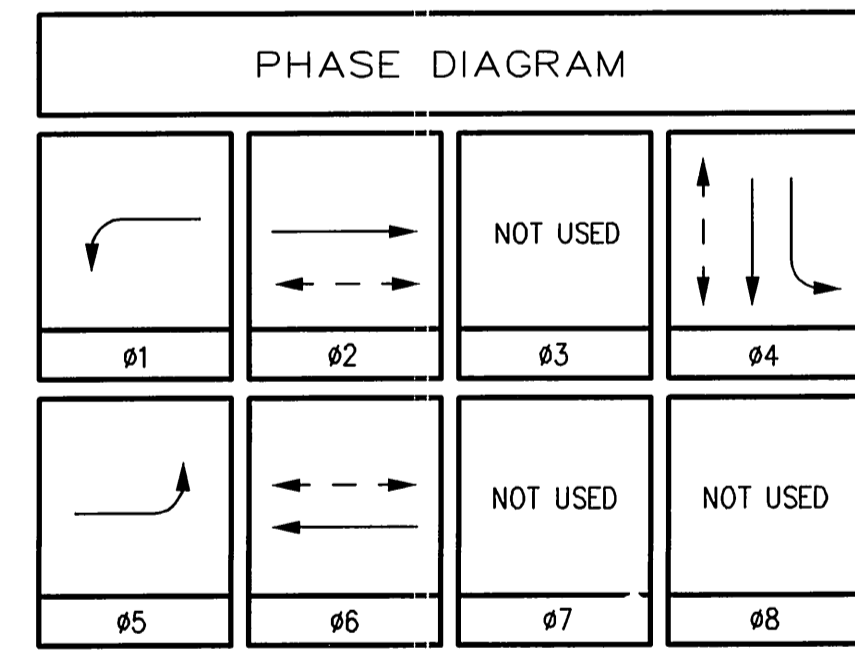
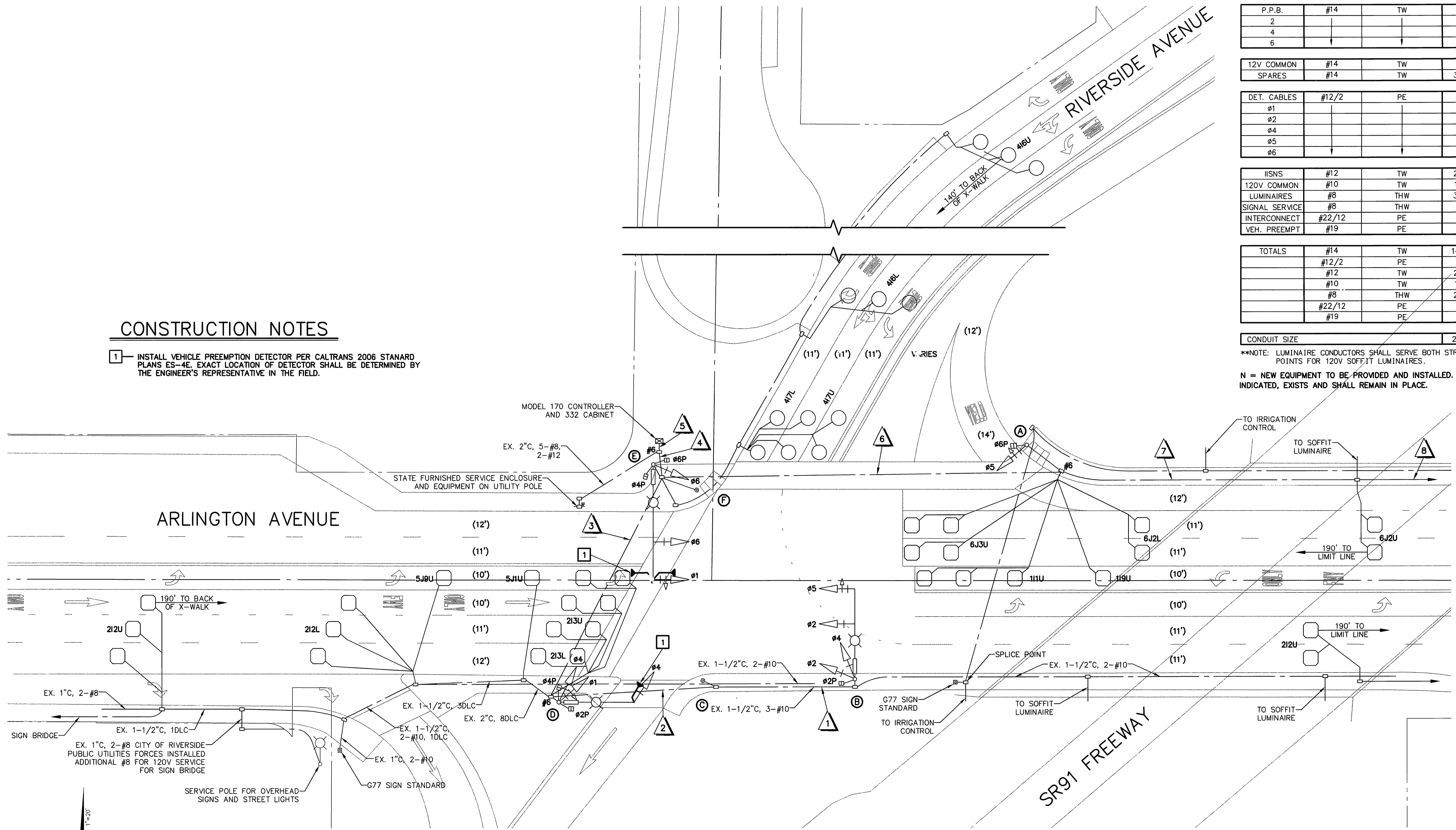
CONDUCTOR TABLE

CONTROL FUNCTION	CONDUCTORS		CONDUCTOR RUNS							
	GAUGE SIZE	INSULATION TYPE	1	2	3	4	5	6	7	8
VEHICULAR	#14	TW								
1			3	3	3			6	3	
2								3		
4			3	3	3			3		
5								3		
6			3	3	3			3		
PEDESTRIAN	#14	TW								
2								4	2	
4						2		4		
6			2	2	2			2		
P.P.B.	#14	TW								
2							1	2	1	
4						1	1	2		
6				1	2			2		
12V COMMON SPARES	#14	TW								
	#14	TW	3	3	3			6	3	
DET. CABLES	#12/2	PE								
ø1					1			1		
ø2								3	3	
ø4							3	3		
ø5								1	1	
ø6						4		4		
ISNS	#12	TW	2	2	2					
120V COMMON	#10	TW	1	1	1			2	1	
LUMINAIRES	#8	THW	3	3	3			3	3	2
SIGNAL SERVICE	#8	THW						2		
INTERCONNECT	#22/12	PE						1	1	1
VEH. PREEMPT	#19	PE						1(N)	2(N)	2(N)
TOTALS	#14	TW	14	16	23	3		42	10	
	#12/2	PE			5	3		12	4	
	#12	TW	2	2	2					
	#10	TW	1	1	1			2	1	
	#8	THW	2	2	2			2	2	2
	#22/12	PE						1	1	1
	#19	PE						1	2	2
CONDUIT SIZE			2"	2"	3"	1.5"	2-3"	2.5"	1.5"	1.5"

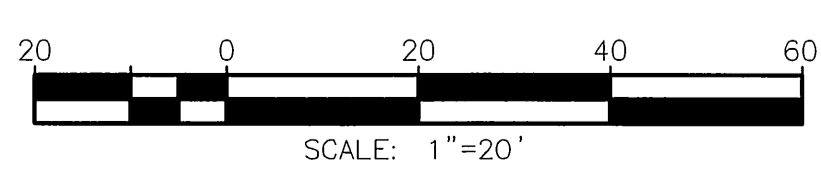
**NOTE: LUMINAIRE CONDUCTORS SHALL SERVE BOTH STREET LIGHTS AND SOFFIT LUMINAIRES. SEE SPLICE POINTS FOR 120V SOFFIT LUMINAIRES.
N = NEW EQUIPMENT TO BE PROVIDED AND INSTALLED. ALL OTHER EQUIPMENT, UNLESS OTHERWISE INDICATED, EXISTS AND SHALL REMAIN IN PLACE.

CONSTRUCTION NOTES

1- INSTALL VEHICLE PREEMPTION DETECTOR PER CALTRANS 2006 STANARD PLANS ES-4E. EXACT LOCATION OF DETECTOR SHALL BE DETERMINED BY THE ENGINEER'S REPRESENTATIVE IN THE FIELD.



08-07-N-SN-1285



Under Ground Service Alert of Southern California
Call: TOLL FREE 1-800-227-2600
TWO WORKING DAYS BEFORE YOU DIG

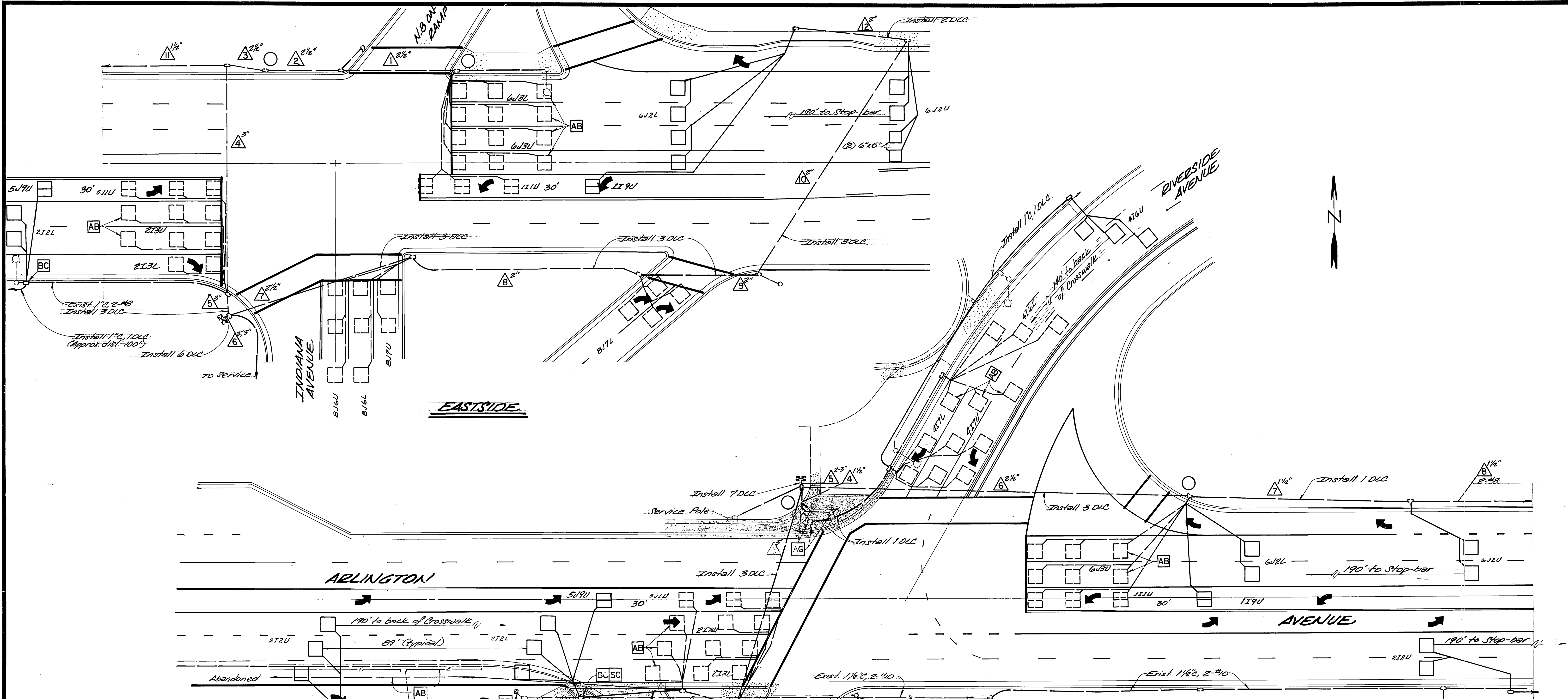
ENGINEER IN RESPONSIBLE CHARGE
GILBERT M. HERNANDEZ
R.C.E. No. 69170 EXPIRES: 6-30-08
DATE: 3-3-08

CITY OF RIVERSIDE, CALIFORNIA
DEPARTMENT OF PUBLIC WORKS
APPROVED BY: [Signature]
DATE: 3/14/08
TRAFFIC DIVISION
CONSTRUCTION ADMIN.
PUBLIC UTILITIES

TRAFFIC SIGNAL MODIFICATION
ARLINGTON AVENUE / RIVERSIDE AVENUE AT SR91 FREEWAY
SCALE: 1" = 20'

X-223-1
SHEET 1 OF 1
FILE NAME: X223-1.DWG

G:\User\TRAFFIC\X-DWGS\X223-1.dwg, 3/3/2008 10:37:39 AM, Synergix 8650 Printer



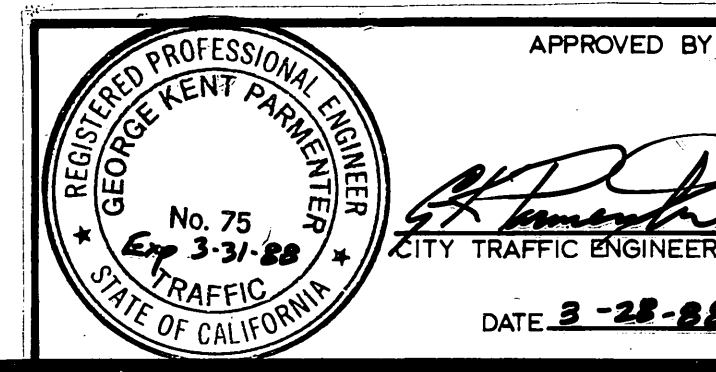
CONSTRUCTION NOTES & LEGEND (THIS PLAN ONLY)

1. This plan pertains to electrical work only.
2. See E-2459, Sheet 9, for continuation of electrical facilities, this plan. Also see E-2459 plans for other required electrical work.
3. Foundation for G77 Sign shall be in accordance to Standard Plan S20B-9; Pile Dia. 30", Depth 13"
4. Existing interconnect cable in Runs 5, 6, 7, and 8 Westside; Runs 4, 5, 6, and 11 Eastside; are continuous runs, no splices.
5. Existing traffic signal standards are not shown; existing adjacent pullboxes with \bigcirc indication.
6. For this system only, detector loop lead-in cable shall be Type B, (16 ga.) but shall not exceed 30 mks. O.D.
7. Existing cables and conductors unsuitable for reinstallation shall be replaced as extra work.
8. In accordance to the provisions of Sec. 36-205C, "Installation" of the Standard Specifications, the conduits entering the No. 6 PB adjacent the controller assembly for Eastside shall be sealed as provided for in the National Electrical Code for Class 1, Division 1, Hazardous Locations.
9. Existing detector loops shall be located and marked prior to any sawcutting for new installations.

AG Adjust Pedestrian Push Button Post and Pullboxes to new grade; also adjust conduits entering pullboxes to grade as required.

No Number adjacent triangle indicates size of existing conduit. Number of run for existing system. Conductor Schedule (not shown on this plan).

Exist. 1 1/2" 2-48 City of Riverside Public Utilities agrees to install an additional 48 to provide 120V service to Sign Bridge Structure.



APPROVED BY: *[Signature]*
 CITY TRAFFIC ENGINEER
 DATE: 3-28-88

MARK	REVISIONS	APP. DATE

DESIGNED BY: *[Signature]* DRAWN BY: *[Signature]* CHECKED BY: *[Signature]*

CITY OF RIVERSIDE
PUBLIC WORKS DEPARTMENT

APPROVED BY: <i>[Signature]</i>	DATE: 2-11-88
PRINCIPAL ENGINEER	TRAFFIC DIVISION
CHIEF P. W. ENGINEER	DATE: Feb. 4, 1988

TRAFFIC SIGNAL MODIFICATION	ACCOUNT NO. 30-575-314
ARLINGTON AVENUE AT INDIANA AVENUE, RIVERSIDE AVENUE, RIVERSIDE FREEWAY (ROUTE 91)	FILE WITH R-2459
X-223A	SHEET 21 OF 21
HORIZ. SCALE: 1" = 20'	VERT. SCALE: 1" = 10'
FAU M-MG-R102(G)	INDEXED 1-12-89 471

DIST.	COUNTY	ROUTE	POST MILES TOTAL PROJECT	SHEET NO.	TOTAL SHEETS
08	Riv	0	Riv	6	14

DATE APPROVED May 13, 1985
ARLINGTON AVENUE

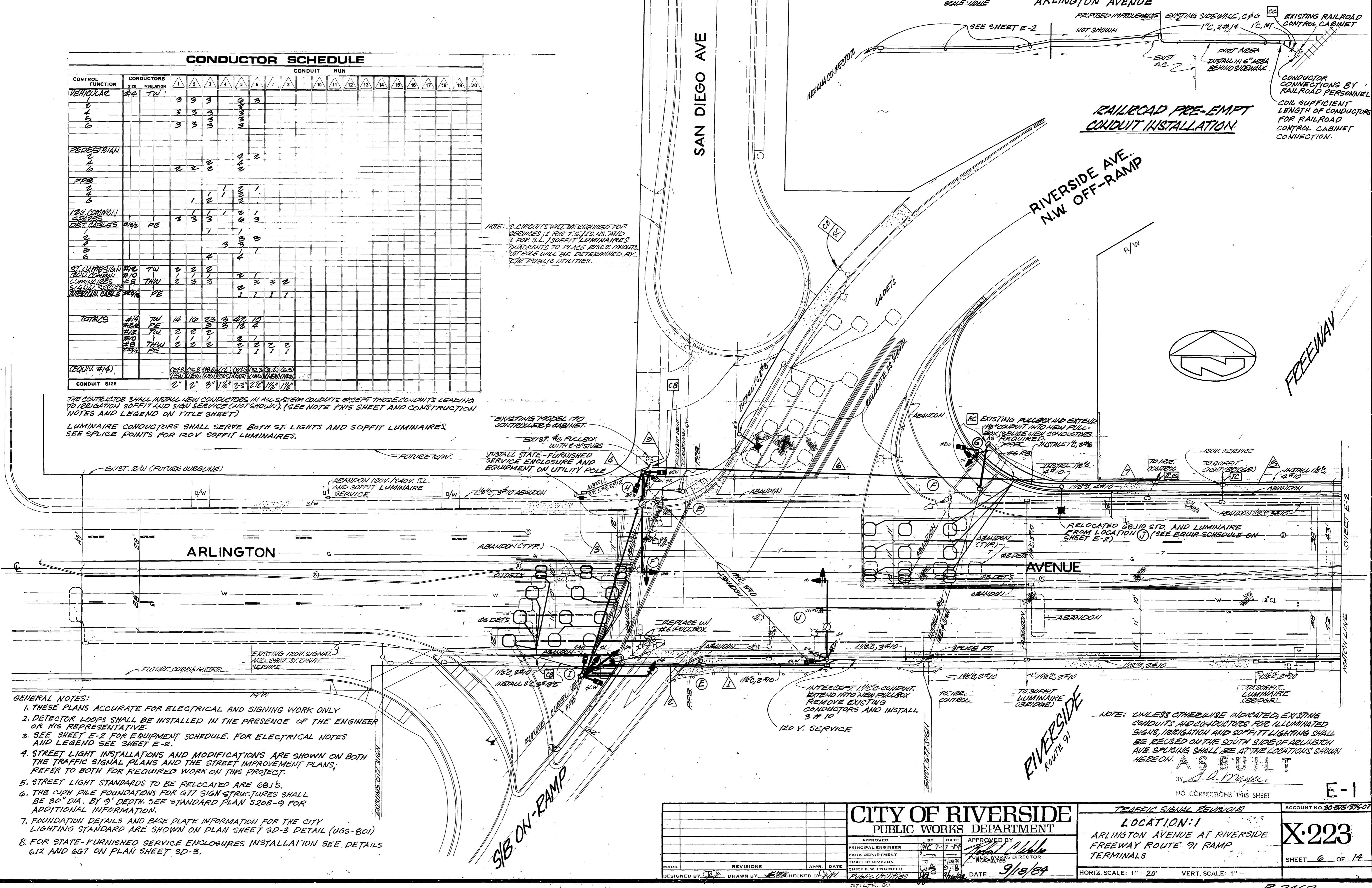


CONTROL FUNCTION	CONDUCTORS SIZE INSULATION	CONDUIT RUN																			
		1	2	3	4	5	6	7	8	9	10	11	12	13	14	15	16	17	18	19	20
VEHICULAR	#4 TW	3	3	3																	
	#2 TW	3	3	3																	
	#4 PE	3	3	3																	
PEDESTALIAN																					
PPS																					
TOTAL COMMON																					
DET. CABLES	#10 PE	3	3	3																	
ST. LUMINAIRE	#10 TW	2	2	2																	
TOTAL COMMON																					
LUMINAIRE	#2 THW	3	3	3																	
INTERM. CABLE	#10 PE																				
TOTALS	#4 TW	14	10	33	3	22	10														
	#2 TW	2	2	2		12	4														
	#4 TW	1	1	1		2	1	2	2												
	#2 THW	2	2	2		2	1	2	2												
	#4 PE	2	2	2		2	1	2	2												
	#10 PE	2	2	2		2	1	2	2												
(EQUIV. #14)		(2#4, 2#2, 2#10, 2#2, 2#10)	(2#2, 2#2, 2#10, 2#2, 2#10)	(2#2, 2#2, 2#10, 2#2, 2#10)	(2#2, 2#2, 2#10, 2#2, 2#10)	(2#2, 2#2, 2#10, 2#2, 2#10)	(2#2, 2#2, 2#10, 2#2, 2#10)	(2#2, 2#2, 2#10, 2#2, 2#10)	(2#2, 2#2, 2#10, 2#2, 2#10)	(2#2, 2#2, 2#10, 2#2, 2#10)	(2#2, 2#2, 2#10, 2#2, 2#10)	(2#2, 2#2, 2#10, 2#2, 2#10)	(2#2, 2#2, 2#10, 2#2, 2#10)	(2#2, 2#2, 2#10, 2#2, 2#10)	(2#2, 2#2, 2#10, 2#2, 2#10)	(2#2, 2#2, 2#10, 2#2, 2#10)	(2#2, 2#2, 2#10, 2#2, 2#10)	(2#2, 2#2, 2#10, 2#2, 2#10)	(2#2, 2#2, 2#10, 2#2, 2#10)	(2#2, 2#2, 2#10, 2#2, 2#10)	(2#2, 2#2, 2#10, 2#2, 2#10)
CONDUIT SIZE		2"	2"	3"	1 1/2"	2-3"	2 1/2"	1 1/2"	1 1/2"												

NOTE: 2 CIRCUITS WILL BE REQUIRED FOR SERVICES: 1 FOR T.S./L.S. NS. AND 1 FOR S.L./SOFFIT LUMINAIRE QUADRANTS TO PLACE RISER CONDUITS ON POLE WILL BE DETERMINED BY CITY PUBLIC UTILITIES.

THE CONTRACTOR SHALL INSTALL NEW CONDUITS IN ALL SYSTEM CONDUITS EXCEPT THOSE CONDUITS LEADING TO IRRIGATION SOFFIT AND SIGN SERVICE (NOT SHOWN). (SEE NOTE THIS SHEET AND CONSTRUCTION NOTES AND LEGEND ON TITLE SHEET)

LUMINAIRE CONDUCTORS SHALL SERVE BOTH ST. LIGHTS AND SOFFIT LUMINAIRE. SEE SPLICE POINTS FOR 120V SOFFIT LUMINAIRE.



- GENERAL NOTES:
1. THESE PLANS ACCURATE FOR ELECTRICAL AND SIGNING WORK ONLY.
 2. DETECTOR LOOPS SHALL BE INSTALLED IN THE PRESENCE OF THE ENGINEER OR HIS REPRESENTATIVE.
 3. SEE SHEET E-2 FOR EQUIPMENT SCHEDULE. FOR ELECTRICAL NOTES AND LEGEND SEE SHEET E-2.
 4. STREET LIGHT INSTALLATIONS AND MODIFICATIONS ARE SHOWN ON BOTH THE TRAFFIC SIGNAL PLANS AND THE STREET IMPROVEMENT PLANS; REFER TO BOTH FOR REQUIRED WORK ON THIS PROJECT.
 5. STREET LIGHT STANDARDS TO BE RELOCATED ARE 681'S.
 6. THE CIPH PILE FOUNDATIONS FOR G77 SIGN STRUCTURES SHALL BE 30" DIA. BY 9' DEPTH. SEE STANDARD PLAN S208-9 FOR ADDITIONAL INFORMATION.
 7. FOUNDATION DETAILS AND BASE PLATE INFORMATION FOR THE CITY LIGHTING STANDARD ARE SHOWN ON PLAN SHEET SD-3 DETAIL (UGS-801)
 8. FOR STATE-FURNISHED SERVICE ENCLOSURES INSTALLATION SEE DETAILS 612 AND 667 ON PLAN SHEET SD-3.

NOTE: UNLESS OTHERWISE INDICATED, EXISTING CONDUITS AND CONDUCTORS FOR ILLUMINATED SIGNS, IRRIGATION AND SOFFIT LIGHTING SHALL BE REUSED ON THE SOUTH SIDE OF ARLINGTON AVE. SPLICING SHALL BE AT THE LOCATIONS SHOWN HEREON.

AS BUILT
 BY *S.A. Mayhew*
 NO CORRECTIONS THIS SHEET

CITY OF RIVERSIDE PUBLIC WORKS DEPARTMENT		TRAFFIC SIGNAL REVISIONS LOCATION: 1 ARLINGTON AVENUE AT RIVERSIDE FREEWAY ROUTE 91 RAMP TERMINALS	ACCOUNT NO. 30-575-376-07 X-223 SHEET 6 OF 14
APPROVED BY PRINCIPAL ENGINEER PARK DEPARTMENT TRAFFIC DIVISION CHIEF P.W. ENGINEER PUBLIC UTILITIES	BY DATE <i>[Signature]</i> 9-7-84 9-18-84	APPROVED BY PUBLIC WORKS DIRECTOR <i>[Signature]</i> 9-18-84	HORIZ. SCALE: 1" = 20' VERT. SCALE: 1" = 10'

6

R-2462

