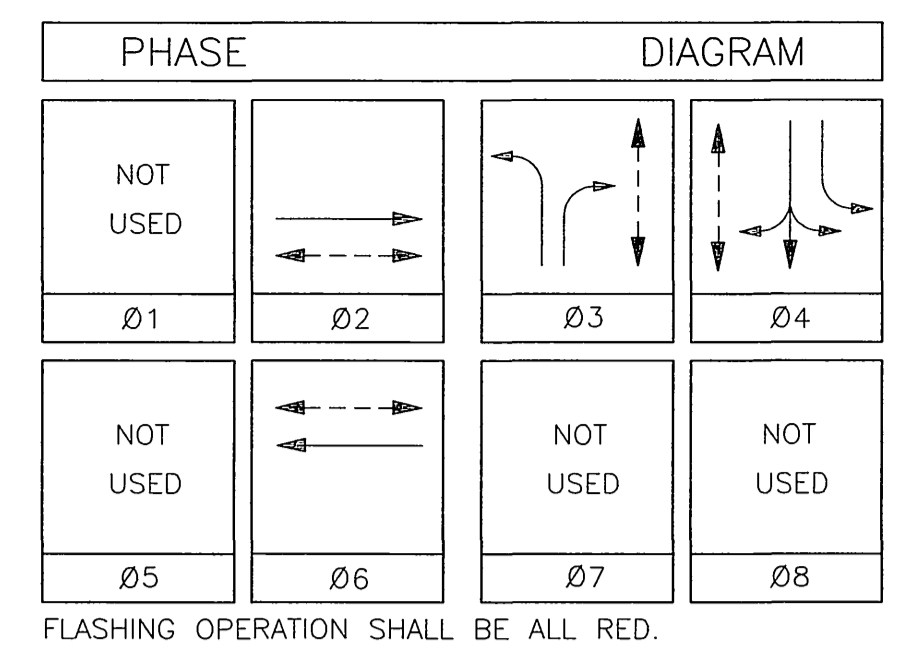


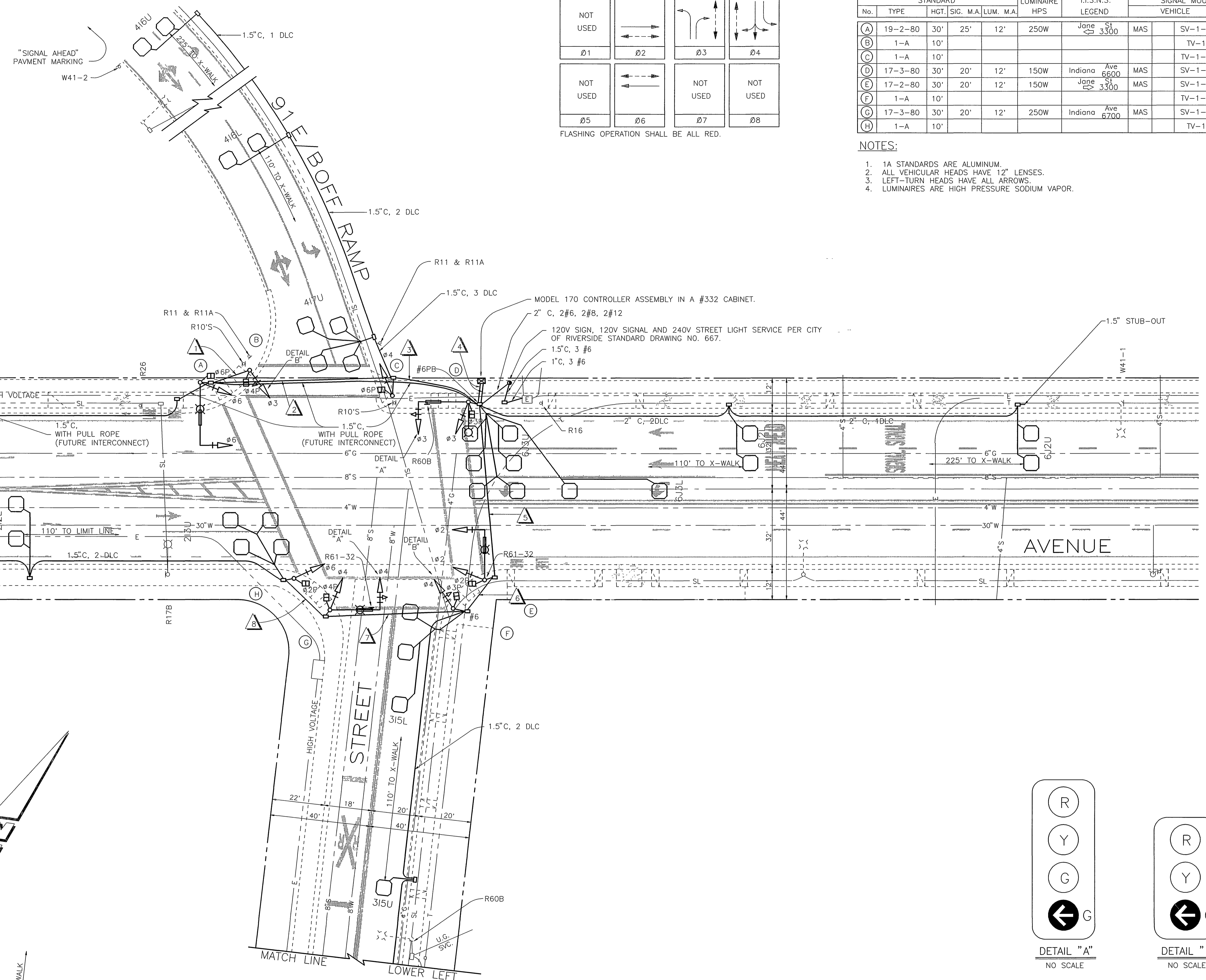
CONDUCTOR		TABLE							
AWG	CIRCUIT	RUNS							
		1	2	3	4	5	6	7	8
Ø2				3	3				
Ø3		3	3	3	6				
Ø4				3	6	3	3	3	
Ø6			3	3	6	3	3	3	3
Ø2 PED				2	2	2	2	2	2
Ø3 PED				4	2	2	2	2	
Ø4 PED		2	2	2	4	2	2	2	
Ø6 PED		2	2	2	2	2	2	2	
Ø2 PPB				1	1	1	1	1	
Ø3 PPB				2	1				
Ø4 PPB		1	1	2	1	1	1	1	
Ø6 PPB		1	1	1	1				
PPB COMMON		1	1	1	2	1	1	1	1
SPARES		3	3	3	6	3	3	3	3
TOTAL		10	16	19	47	22	18	16	10
Ø2 DETECTOR				3	3	3	3	3	
Ø3 DETECTOR				2	2	2	2		
Ø4 DETECTOR		3	3						
Ø6 DETECTOR				4					
QUEUE (R.R. PRE-EMPT)				1	1	1			
TOTAL				3	14	6	6	3	3
#12 I.I.S.N.S.		2	2	2	2	2	2		
#10 SIGNAL COMMON		1	1	1	2	1	1	1	1
#8 LUMINAIRE		2	2	2	2	2	2		
#6 SIGNAL SERVICE				2					
CONDUIT SIZE		2"	3"	3"	2-3"	3"	3"	4"	2"



POLE						SCHEDULE				
No.	TYPE	STANDARD			LUMINAIRE HPS	I.I.S.N.S. LEGEND	SIGNAL MOUNTING		PPB PHASE	
		HGT.	SIG. M.A.	LUM. M.A.			VEHICLE	PED		
(A)	19-2-80	30'	25'	12'	250W	Jane St 3300	MAS	SV-1-T	SP-1-T	Ø4
(B)	1-A	10'						TV-1	SP-1-T	Ø6
(C)	1-A	10'						TV-1-T	TP-1-T	Ø6
(D)	17-3-80	30'	20'	12'	150W	Indiana Ave 6600	MAS	SV-1-T	SP-1-T	Ø3
(E)	17-2-80	30'	20'	12'	150W	Jane St 3300	MAS	SV-1-T	SP-1-T	Ø3
(F)	1-A	10'						TV-1-T	SP-1-T	Ø2
(G)	17-3-80	30'	20'	12'	250W	Indiana Ave 6700	MAS	SV-1-T	SP-1-T	Ø2
(H)	1-A	10'						TV-1	SP-1-T	Ø4

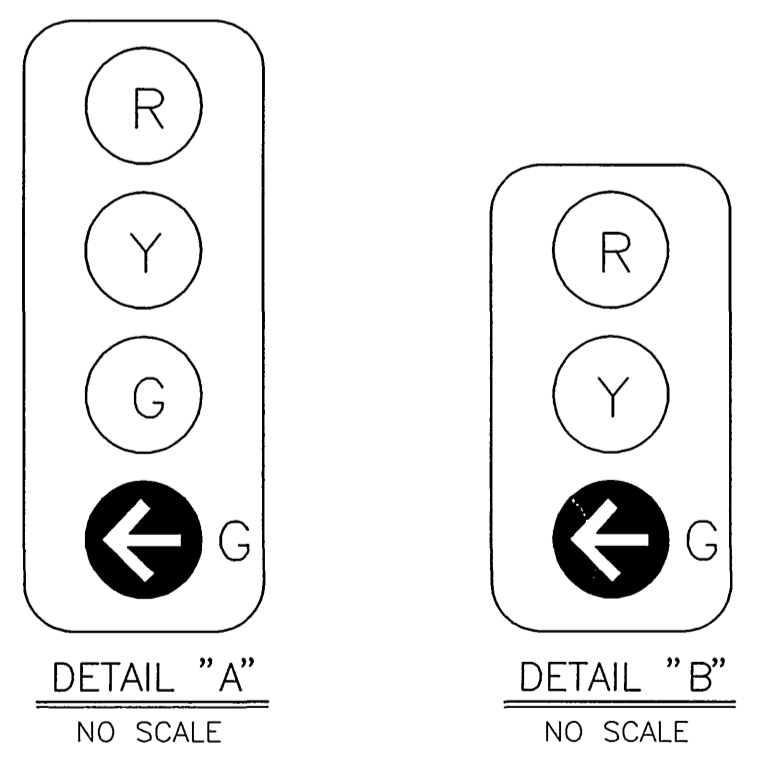
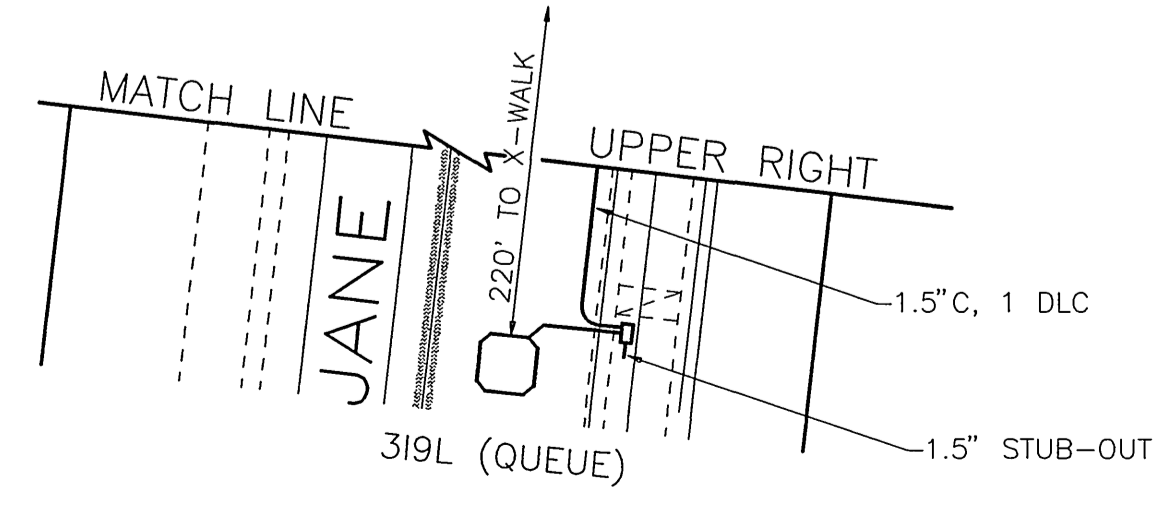
NOTES:

- 1A STANDARDS ARE ALUMINUM.
- ALL VEHICULAR HEADS HAVE 12" LENSES.
- LEFT-TURN HEADS HAVE ALL ARROWS.
- LUMINAIRE ARE HIGH PRESSURE SODIUM VAPOR.



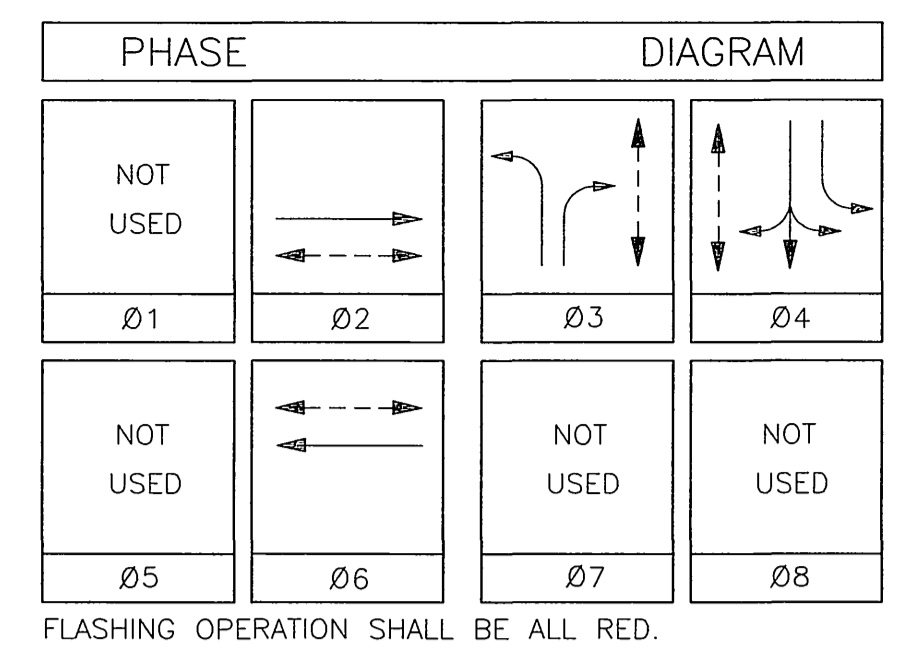
DETECTOR		ASSIGNMENT	
CHANNELS	LOOP DESIGNATION	NUMBER OF LOOPS	FEATURES
1	6J2U	2	■ ●
2	6J2L	2	■ ●
1	6J4U	4	*
2	6J3L	4	*
1	3I5U	1	■ ●
2	3I5L	3	*
1	4I6U	2	■ ●
2	4I6L	2	■ ●
1	4I7U	4	*
2	SPARE		
1	2I2U	2	■ ●
2	2I2L	2	■ ●
1	2I4U	4	*
2	3I9L	1	

1. DETECTORS SHALL BE 2-CHANNEL RACK-MOUNTED.
  2. SEE SPECIAL PROVISIONS FOR DETAILS AND OTHER FEATURES.
  3. DETECTOR TIMING FEATURES SHALL BE ACCOMPLISHED THRU THE INTERNAL LOGIC OF THE CONTROLLER UNIT.
  4. DETECTOR LOOPS WITH SPECIAL FEATURES SHALL ALSO DETECT FOR NORMAL OPERATION.
- ▲ = DELAY.  
 ■ = CALL-HOLD (EXTENSION).  
 ● = FOR SAMPLING.  
 \* = TYPE II DISCONNECT; SEE SPECIAL PROVISIONS.  
 \*\* = TO CALL RAILROAD PRE-EMPT, NOT PHASE.



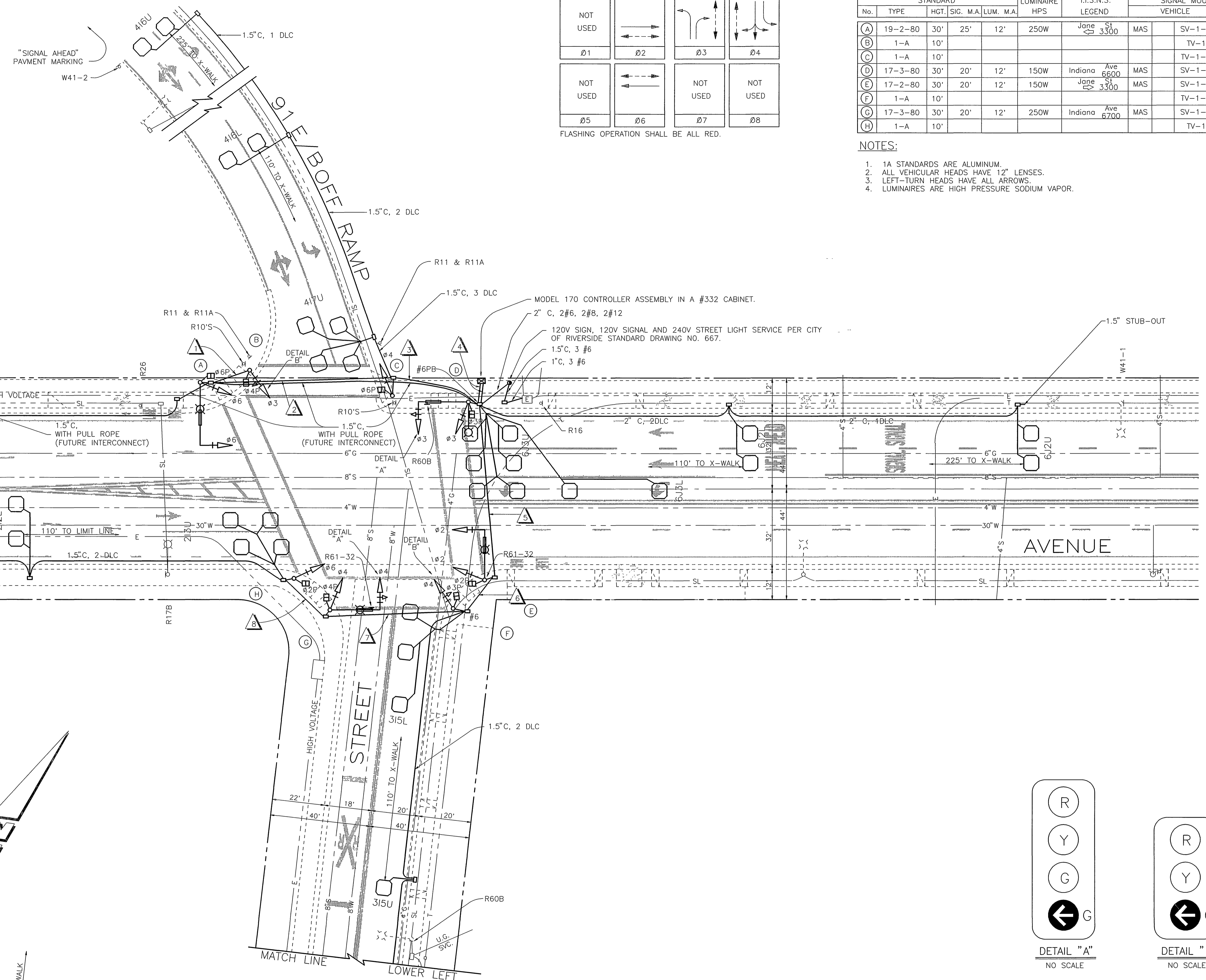
<p>ENGINEER IN RESPONSIBLE CHARGE RICHARD D. McGRATH R.C.E. NO. 31952 EXPIRES</p>	CITY OF RIVERSIDE, CALIFORNIA DEPARTMENT OF PUBLIC WORKS		TRAFFIC SIGNAL INDIANA AVENUE AND JANE ST/91 EB OFF-RAMP		ACCT. NO. 30-576-353-02
	APPROVED BY _____ BY _____ DATE _____ PRINCIPAL ENGINEER	APPROVED BY _____ BY _____ DATE _____ DIRECTOR OF PUBLIC WORKS	SIGNALIZATION AS-BUILT TRC 11/93	P.W. INSPECTION TRAFFIC DIVISION	CHIEF P.W. ENGR. PUBLIC UTILITIES

CONDUCTOR		TABLE							
AWG	CIRCUIT	RUNS							
		1	2	3	4	5	6	7	8
Ø2				3	3				
Ø3		3	3	3	6				
Ø4				3	6	3	3	3	
Ø6			3	3	6	3	3	3	3
Ø2 PED				2	2	2	2	2	2
Ø3 PED					4	2	2	2	
Ø4 PED		2	2	2	4	2	2	2	
Ø6 PED		2	2	2	2				
Ø2 PPB					1	1	1	1	
Ø3 PPB					2	1			
Ø4 PPB		1	1	1	2	1	1	1	1
Ø6 PPB		1	1	1	1				
PPB COMMON		1	1	1	2	1	1	1	1
SPARES		3	3	3	6	3	3	3	3
TOTAL		10	16	19	47	22	18	16	10
Ø2 DETECTOR					3	3	3	3	3
Ø3 DETECTOR					2	2	2		
Ø4 DETECTOR			3	3					
Ø6 DETECTOR				4					
QUEUE (R.R. PRE-EMPT)				1	1	1			
TOTAL			3	14	6	6	3	3	
#12 I.I.S.N.S.			2	2	2	2	2		
#10 SIGNAL COMMON		1	1	1	2	1	1	1	1
#8 LUMINAIRE			2	2	2	2	2		
#6 SIGNAL SERVICE				2					
CONDUIT SIZE		2"	3"	3"	2-3"	3"	3"	4"	2"



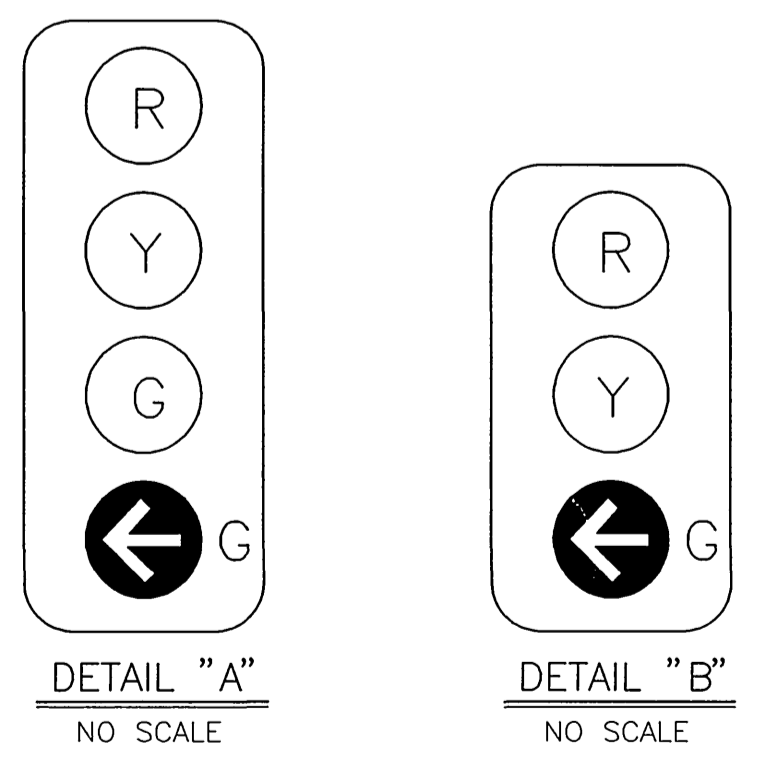
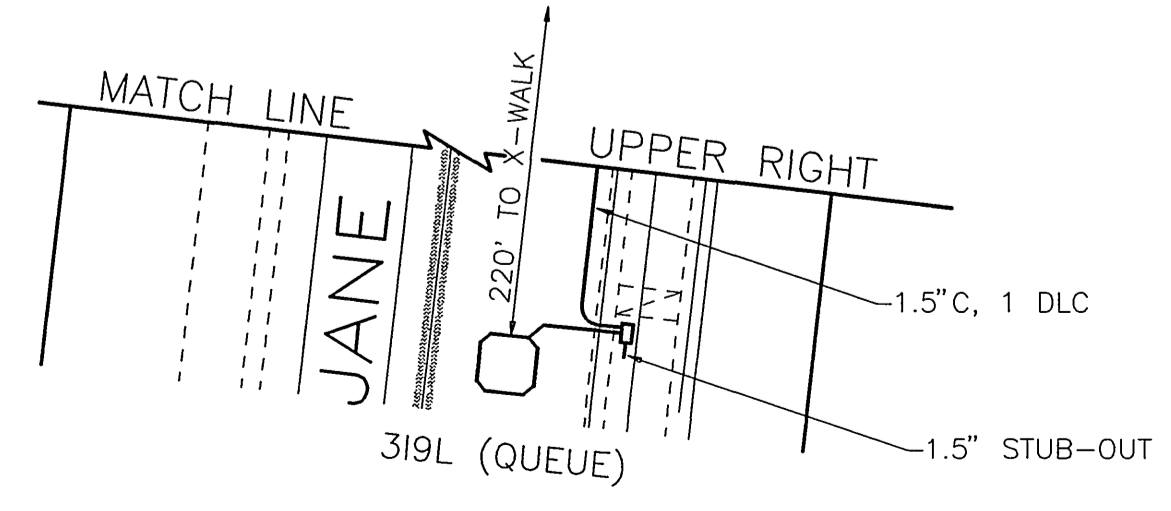
POLE						SCHEDULE				
No.	TYPE	STANDARD			LUMINAIRE HPS	I.I.S.N.S. LEGEND	SIGNAL MOUNTING		PPB PHASE	
		HGT.	SIG. M.A.	LUM. M.A.			VEHICLE	PED		
(A)	19-2-80	30'	25'	12'	250W	Jane St 3300	MAS	SV-1-T	SP-1-T	Ø4
(B)	1-A	10'						TV-1	SP-1-T	Ø6
(C)	1-A	10'						TV-1-T	TP-1-T	Ø6
(D)	17-3-80	30'	20'	12'	150W	Indiana Ave 6600	MAS	SV-1-T	SP-1-T	Ø3
(E)	17-2-80	30'	20'	12'	150W	Jane St 3300	MAS	SV-1-T	SP-1-T	Ø3
(F)	1-A	10'						TV-1-T	SP-1-T	Ø2
(G)	17-3-80	30'	20'	12'	250W	Indiana Ave 6700	MAS	SV-1-T	SP-1-T	Ø2
(H)	1-A	10'						TV-1	SP-1-T	Ø4

- NOTES:
- 1A STANDARDS ARE ALUMINUM.
  - ALL VEHICULAR HEADS HAVE 12" LENSES.
  - LEFT-TURN HEADS HAVE ALL ARROWS.
  - LUMINAIRE ARE HIGH PRESSURE SODIUM VAPOR.



DETECTOR		ASSIGNMENT	
CHANNELS	LOOP DESIGNATION	NUMBER OF LOOPS	FEATURES
1	6J2U	2	■ ●
2	6J2L	2	■ ●
1	6J4U	4	*
2	6J3L	4	*
1	3I5U	1	■ ●
2	3I5L	3	*
1	4I6U	2	■ ●
2	4I6L	2	■ ●
1	4I7U	4	*
2	SPARE		
1	2I2U	2	■ ●
2	2I2L	2	■ ●
1	2I4U	4	*
2	3I9L	1	

1. DETECTORS SHALL BE 2-CHANNEL RACK-MOUNTED.
  2. SEE SPECIAL PROVISIONS FOR DETAILS AND OTHER FEATURES.
  3. DETECTOR TIMING FEATURES SHALL BE ACCOMPLISHED THRU THE INTERNAL LOGIC OF THE CONTROLLER UNIT.
  4. DETECTOR LOOPS WITH SPECIAL FEATURES SHALL ALSO DETECT FOR NORMAL OPERATION.
- ▲ = DELAY.  
 ■ = CALL-HOLD (EXTENSION).  
 ● = FOR SAMPLING.  
 \* = TYPE II DISCONNECT; SEE SPECIAL PROVISIONS.  
 \*\* = TO CALL RAILROAD PRE-EMPT, NOT PHASE.



	ENGINEER IN RESPONSIBLE CHARGE RICHARD D. McGRATH R.C.E. NO. 31952 EXPIRES 11/93		CITY OF RIVERSIDE, CALIFORNIA DEPARTMENT OF PUBLIC WORKS		TRAFFIC SIGNAL INDIANA AVENUE AND JANE ST/91 EB OFF-RAMP	ACCT. NO. 30-576-353-02
	DESIGNED BY _____ DRAWN BY _____ CHECKED BY _____	SIGNALIZATION AS-BUILT TRC 11/93	APPROVED BY _____ BY DATE _____ P.W. INSPECTION TRAFFIC DIVISION CHIEF P.W. ENGR. _____ PUBLIC UTILITIES	APPROVED BY _____ BY DATE _____ DIRECTOR OF PUBLIC WORKS	SCALE: 1" = 20'	X-226 SHEET 1 OF 1