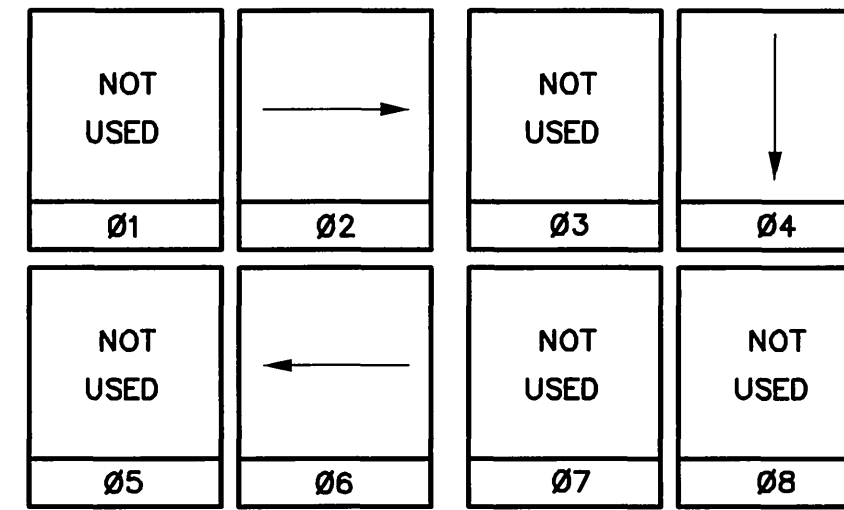


# EQUIPMENT SCHEDULE

NO.	SIGNAL STANDARD		LUMINAIRES		I.I.S.N.S.		SIGNAL MOUNTINGS		NOTES
	TYPE	H'GHT	M.A.	L.A.	H.P.S.V.	LEGEND	VEHICLE		
(A)	19-3-80	17'	25'	12'	250W	FIRE STATION	MAS	SV-1-T	
(B)	24-4-80	17'	35'			FIRE STATION	2-MAS	SV-1-T	MODIFIED HEIGHT 17' (CITY FORCES)
(C)	1A	10'	-			-	-	TV-2-T	

- NOTES:  
 1. ALL POLES AND MAST ARMS WILL BE SUPPLIED BY CITY OF RIVERSIDE.  
 2. IISNS PANELS SHALL HAVE WHITE LETTERS/BORDER ON RED BACKGROUND.  
 3. CONTRACTOR SHALL PROVIDE ALL THE NECESSARY MOUNTING BRACKETS, CABLE, EQUIPMENT AND APPURTENANCES FOR INSTALLATION.

# PHASE DIAGRAM

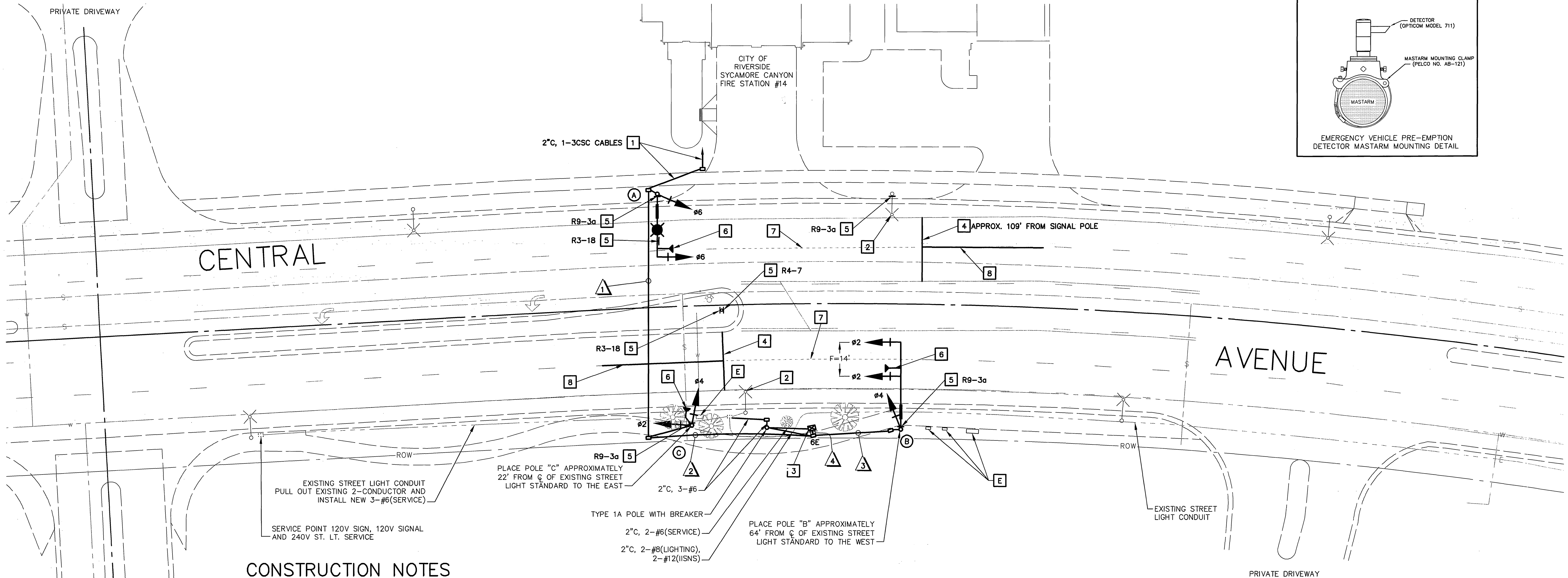
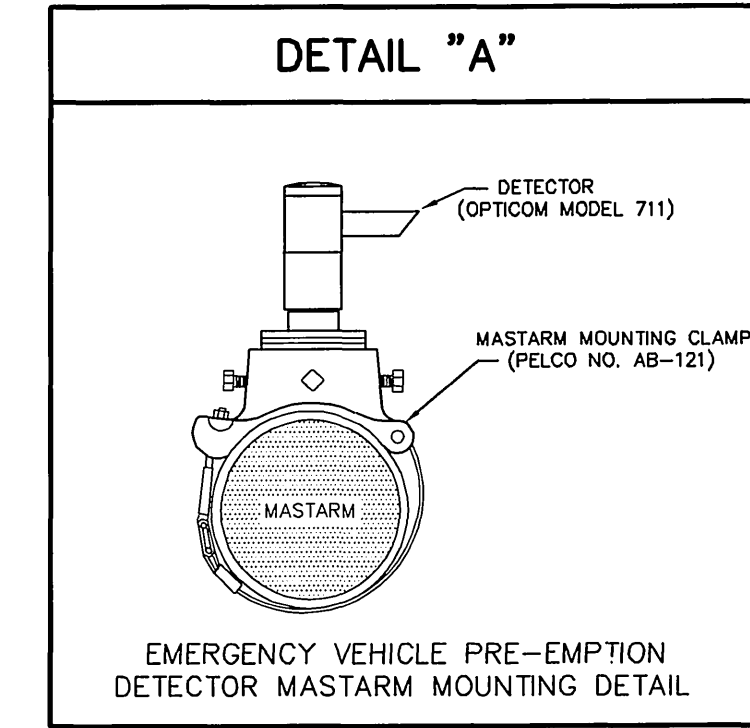


FLASHING OPERATION SHALL BE ALL RED.  
 PHASE FOUR IS FOR FIRE EMERGENCY ONLY

# CONDUCTOR TABLE

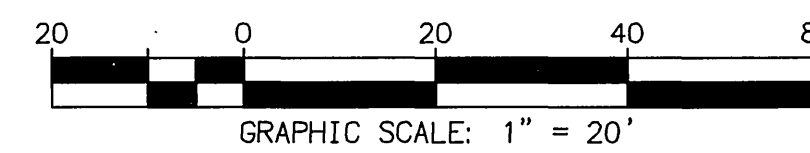
CONTROL FUNCTION	CONDUCTORS	CONDUCTOR RUNS			
		1	2	3	4
IMSA CABLE	12 CSC	1	2	1	3
	3 CSC	1	1		1
EVP CABLE		1	2	1	3
I.I.S.N.S.	#12	2	2	2	
LUMINAIRES	#8	2	2		
CONDUIT SIZE		3"	3"	3"	3"

## DETAIL "A"



## CONSTRUCTION NOTES

- INSTALL TWO PEDESTRIAN PUSH BUTTONS INSIDE FIRE STATION. EXACT LOCATION OF 2" CONDUIT AND BUTTONS SHALL BE DETERMINED IN THE FIELD. CONTRACTOR TO COORDINATE WITH CITY OF RIVERSIDE FIRE DEPARTMENT. CONTACT CHIEF EARLEY AT 951-826-5332.
- REMOVE EXISTING 200W STREET LIGHT BULBS AND REPLACE WITH 250W HPSV BULBS AS SHOWN ON PLAN.
- INSTALL 170E CONTROLLER ASSEMBLY HOUSED IN A MODEL 332 CABINET. INSTALL 3M OPTICOM PHASE SELECTOR MODULE. INSTALL BATTERY BACKUP SYSTEM, CLARY CORPORATION MODEL SP1250PD PLUS. BATTERIES SHALL BE INSTALLED IN A CLARY CABINET, EXTERNALLY MOUNTED TO THE CONTROLLER CABINET.
- INSTALL 12" THERMOPLASTIC LIMIT LINE. MUST BE 60' MINIMUM FROM SIGNAL POLE.
- INSTALL SIGN AS NOTED.
- INSTALL 3M OPTICOM DETECTOR, MODEL 711 ON MAST ARM PER DETAIL "A". EXACT LOCATION OF DETECTOR SHALL BE DETERMINED BY THE TRAFFIC ENGINEER OR HIS REPRESENTATIVE.
- REMOVE STRIPING BY WET SANDBLASTING.
- INSTALL 50' SOLID WHITE STRIPE.
- EXISTING UTILITY EQUIPMENT.



## PAVEMENT DELINEATION

- INDICATES STRIPING TO BE INSTALLED.
- INDICATES STRIPING AND PAVEMENT MARKINGS TO REMAIN.
- INDICATES STRIPING AND PAVEMENT MARKINGS TO BE REMOVED.

<p><b>ENGINEER IN RESPONSIBLE CHARGE</b>                  GILBERT M. HERNANDEZ                  R.C.E. No. 69170 expires 6-30-08</p>	<p>CITY OF RIVERSIDE, CALIFORNIA                  DEPARTMENT OF PUBLIC WORKS</p>		<p>TRAFFIC SIGNAL                  CENTRAL AVENUE                  @ FIRE STATION                  #14</p>	<p>ACCT. NO.                  X-231</p>
	<p>DESIGNED BY: DMC                  DRAWN BY: DMC                  CHECKED BY:</p>	<p>APPROVED BY: [Signature]                  DATE: 7/3/07</p>	<p>APPROVED BY: [Signature]                  DATE: 7/3/07</p>	<p>SCALE: 1" = 20'</p>