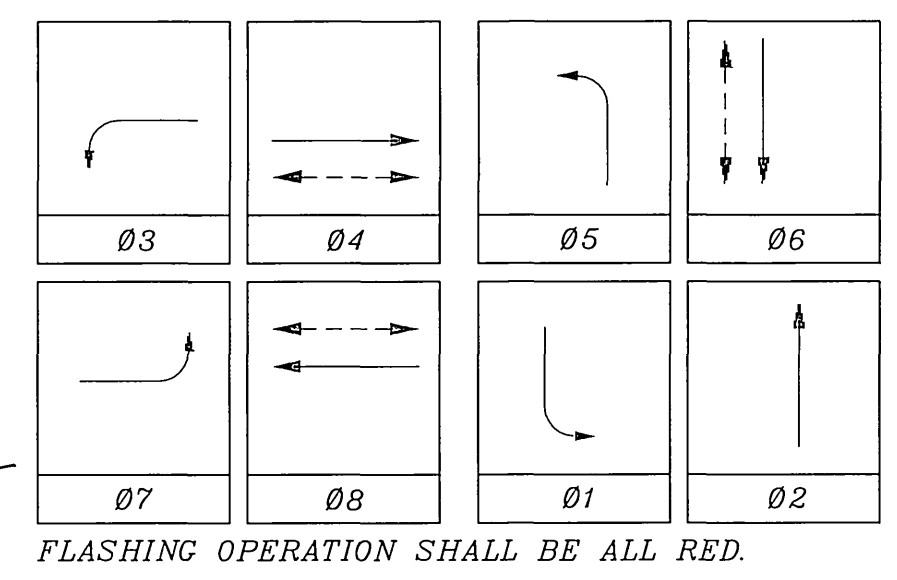


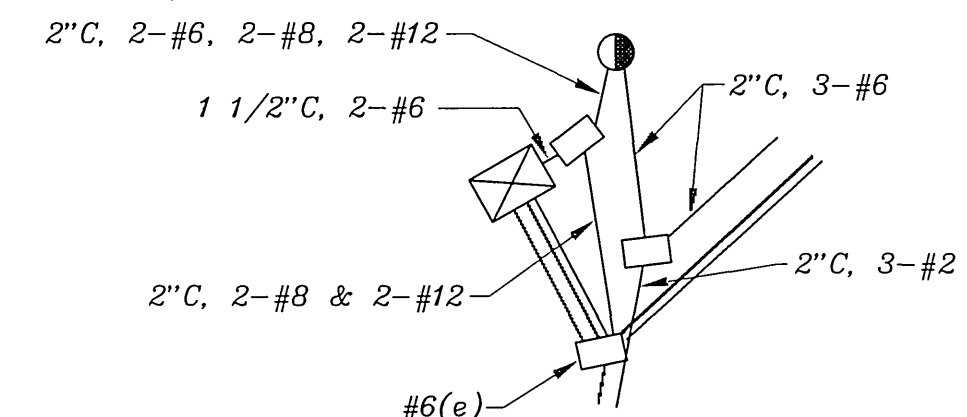
PHASE DIAGRAM



FLASHING OPERATION SHALL BE ALL RED.

CONDUCTOR TABLE

CONTROL FUNCTION	CONDUCTORS	CONDUCTOR RUNS																			
		1	2	3	4	5	6	7	8	9	10										
VEHICLE & PEDESTRIAN HEADS, PEDESTRIAN PUSH BUTTONS, SPARES & COMMONS	12 WIRE IMSA 9 WIRE IMSA 5 WIRE IMSA 3 WIRE IMSA																				
DETECTOR CABLE	#16/2																				
PHASE 1																					
PHASE 2																					
PHASE 3																					
PHASE 4																					
PHASE 5																					
PHASE 6																					
PHASE 7																					
PHASE 8																					
I.I.S.N.S.	#12																				
LUMINAIRES	#8																				
120V./240V. SERVICE	#2																				
INTERCONNECT CABLE	12-PAIR #20																				
CONDUIT SIZE		2"	2.5"	3"	2-3"	3"	3"	2.5"	2"	1.5"	2"										



DETAIL "A"

EQUIPMENT		SCHEDULE		REMARKS	
SIGNAL STANDARD NO.	LUMINAIRE TYPE	I.I.S.N.S. LEGEND	SIGNAL MOUNTINGS VEHICLE	PEDESTRIAN	PPB PHASE
A	29-5-80	30' 50' 12' 250W	FAIR ISLE	MAS	SV-2-TD
B	1A	7'		TP-1-T	N/A
C	26-4-80	30' 45' 12' 250W	SYCAMORE CANYON	MAS	SV-1-T
D	TYPE 15	10' 12' 250W		TV-1-T	SP-1-T
E	26-4-80	30' 45' 12' 250W	FAIR ISLE	MAS	SV-1-T
F	1A	10'		TV-1-T	N/A
G	26-4-80	30' 40' 8' 250W	SYCAMORE CANYON	MAS	SV-1-T
H	TYPE 15	10' 12' 250W		TV-1-T	SP-1-T

NOTES:
 1. ALL VEHICULAR HEADS ARE 12" LENSES.
 2. ALL LEFT TURN HEADS ARE ALL ARROWS.

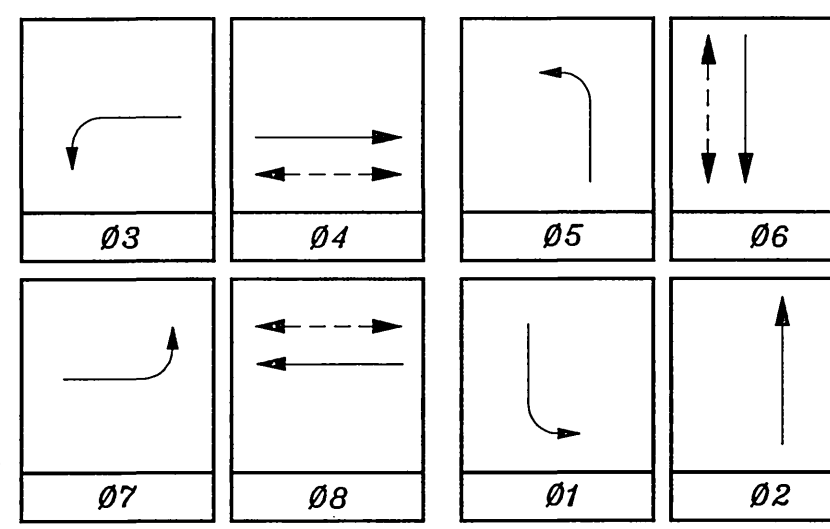
CITY OF RIVERSIDE, CALIFORNIA DEPARTMENT OF PUBLIC WORKS		TRAFFIC SIGNAL		ACCT. NO.
APPROVED BY	BY	DATE	APPROVED BY	X-240
AS-BUILT PER SIGNALIZATION	MAC	12/00	DIRECTOR OF PUBLIC WORKS	SHEET 1 OF 1
MARK	REVISIONS	APPR. DATE	DATE	FILE NAME: X240AS.DWG
DESIGNED BY	R.C.C.	DRAWN BY	R.C.C.	CHECKED BY

DETECTOR SCHEDULE

LOOP DESIGNATION	NUMBER OF LOOPS
1THU	3
212U	3
212L	3
315U	3
416U	2
416L	4
5JU	3
6J2L	3
7J5U	3
8J6U	2
8J6L	2
8J7L	2

Detectors shall be 2-channel rack-mounted.

PHASE DIAGRAM



FLASHING OPERATION SHALL BE ALL RED.

CONDUCTOR TABLE

CONTROL FUNCTION	CONDUCTORS	CONDUCTOR RUNS								
		1	2	3	4	5	6	7	8	9
VEHICLE & PEDESTRIAN HEADS, PEDESTRIAN PUSH BUTTONS, SPARES & COMMONS	12 WIRE IMSA 9 WIRE IMSA 5 WIRE IMSA 3 WIRE IMSA	1	1	1	4	2	2	1	1	
DETECTOR CABLE	#16/2			1	1					
PHASE 1					2	2	2	2		
PHASE 2				1	1	1	1			
PHASE 3					2	2				
PHASE 4					1	1	1	1		
PHASE 5					1	1				
PHASE 6										
PHASE 7					3	3	3	3		
PHASE 8										
I.I.S.N.S.	#12		2	2	2	2	2	2		
LUMINAIRES	#8		2	2	2	2	2	2		
120V./240V. SERVICE	#2									3
INTERCONNECT CABLE	12-PAIR #20									1
CONDUIT SIZE		2"	2.5"	3"	2-3"	3"	3"	2.5"	2"	1.5"

- NOTES:**
- SEE SPECIAL PROVISIONS FOR ADDITIONAL INFORMATION ON I.M.S.A. CABLE.
 - CONTRACTOR SHALL INSTALL 1 1/2" CONDUIT (CONDUCTOR RUN - Δ) FOR INTERCONNECT; CONDUIT PARALLELS CONDUCTOR RUN 3.
 - CONTRACTOR SHALL INSTALL 2" CONDUIT (CONDUCTOR RUN - Δ) FOR SERVICE TO TRAFFIC SIGNAL AT FAIR ISLE & 1-215/60 SB RAMPS (SEE C/R PLAN X-242); CONDUIT PARALLELS CONDUCTOR RUNS 3, 5 & 6.
 - WHEN APPLICABLE, PARALLELING CONDUITS SHALL BE PLACED IN COMMON TRENCH.
- SC CONTRACTOR SHALL PROVIDE WIRE MOLD FOR SPLICING SERVICE CONDUCTORS FOR BOTH INTERSECTIONS.

SYCAMORE CANYON

FAIR ISLE

BLVD.

DRIVE

DETAIL "A"

DETAIL "B"

PAVEMENT DELINEATION

- Indicates striping and pavement markings to be installed.
- Indicates striping and pavement markings to remain.
- - - Indicates striping and pavement markings to be removed.

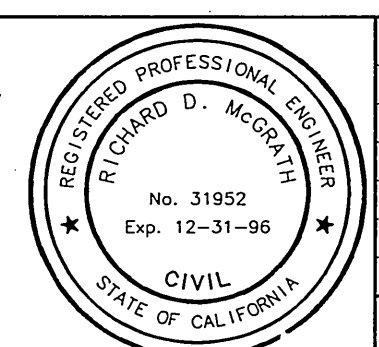
GENERAL NOTES

- Detector loops shall be installed in the presence of the Traffic Engineer or his representative.
- All signing, striping, and pavement marking requirements shall be completed at least one day prior to turn-on.
- Typical detector loop spacing: 10' & 15'.
- See C/R plan R-3396 for street improvements.
- See C/R plan XL-286 for pavement delineation and signs.

SIGNAL STANDARD		LUMINAIRE		I.I.S.N.S.		SIGNAL MOUNTINGS			PPB	REMARKS
NO.	TYPE	HGHT	M.A.	M.A.	H.P.S.V.	VEHICLE	PEDESTRIAN	AUDIBLE	PHASE	
(A)	29-5-80	30'	50'	12'	250W	FAIR ISLE	MAS			
							SV-2-TD	SP-1-T	N/A	4
(B)	1A	7'						TP-1-T	N/A	6
(C)	24-4-80	30'	35'	12'	250W	SYCAMORE CANYON	MAS			
							SV-1-T		N/A	6
(D)	TYPE 15	10'		12'	250W		TV-1-T	SP-1-T	N/A	
(E)	26-4-80	30'	45'	12'	250W	FAIR ISLE	MAS			
							SV-1-T	SP-1-T	N/A	
(F)	1A	10'					TV-1-T		N/A	2
(G)	26-4-80(E)	30'	40'	8'(E)	250W(E)	SYCAMORE CANYON	MAS			SEE NOTE #5
							SV-1-T	SP-1-T	N/A	2
(H)	TYPE 15	10'		12'	250W		TV-1-T	SP-1-T	N/A	4

- NOTES:**
- ALL VEHICULAR HEADS SHALL HAVE 12" LENSES.
 - ALL LEFT TURN HEADS SHALL HAVE ALL ARROWS.
 - LUMINAIRES SHALL BE HIGH PRESSURE SODIUM VAPOR.
 - PEDESTRIAN PUSH BUTTONS SHALL BE INSTALLED ON THE POLE IN THE QUADRANT NEAREST THE CROSSWALK SERVING THE PHASE.
 - INSTALL NEW 40' SIGNAL MAST ARM (CASE 4) ON EXISTING SIGNAL STANDARD TYPE 26-4-80.

ENGINEER IN RESPONSIBLE CHARGE
 Richard D. McGrath
 RICHARD D. McGRATH
 R.C.E. No. 31952
 DATE 1-17-96



CITY OF RIVERSIDE, CALIFORNIA		DEPARTMENT OF PUBLIC WORKS	
APPROVED BY	DATE	APPROVED BY	DATE
PRINCIPAL ENGINEER	1/18/96	PRINCIPAL ENGINEER	1/18/96
P.W. INSPECTION	1/18/96	P.W. INSPECTION	1/18/96
TRAFFIC DIVISION	1/18/96	TRAFFIC DIVISION	1/18/96
CHIEF P.W. ENGR.	1/18/96	CHIEF P.W. ENGR.	1/18/96
PUBLIC UTILITIES	1/18/96	PUBLIC UTILITIES	1/18/96

TRAFFIC SIGNAL		ACCT. NO.
SYCAMORE CANYON BLVD. @ FAIR ISLE DR.		0453-570400-455010
SCALE: 1" = 20'		X-240
SHEET 1 OF 1		FILE NAME: X240.DWG