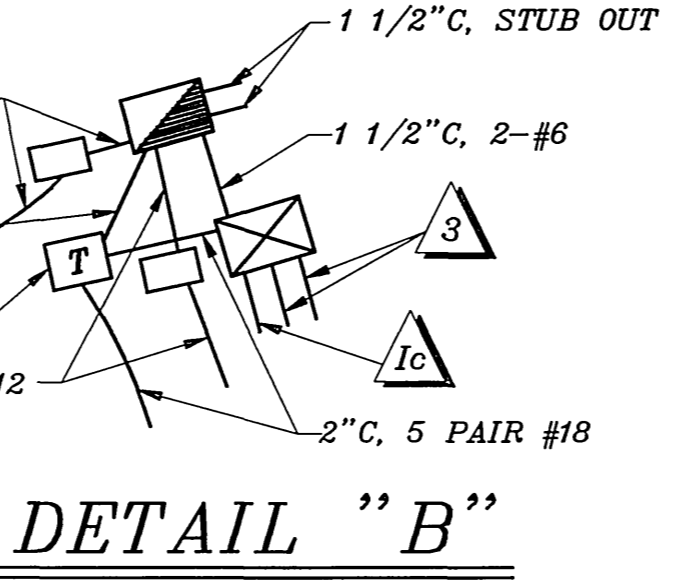
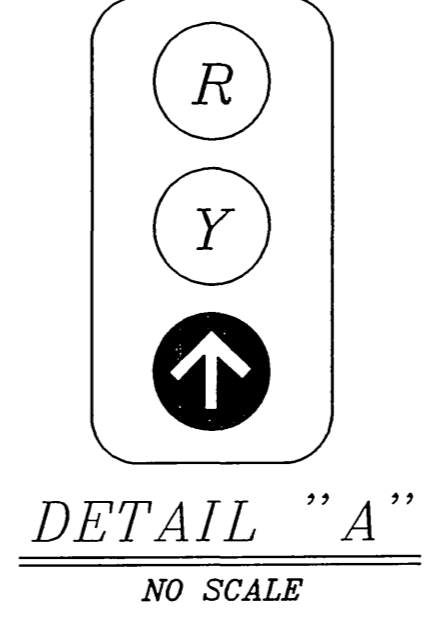
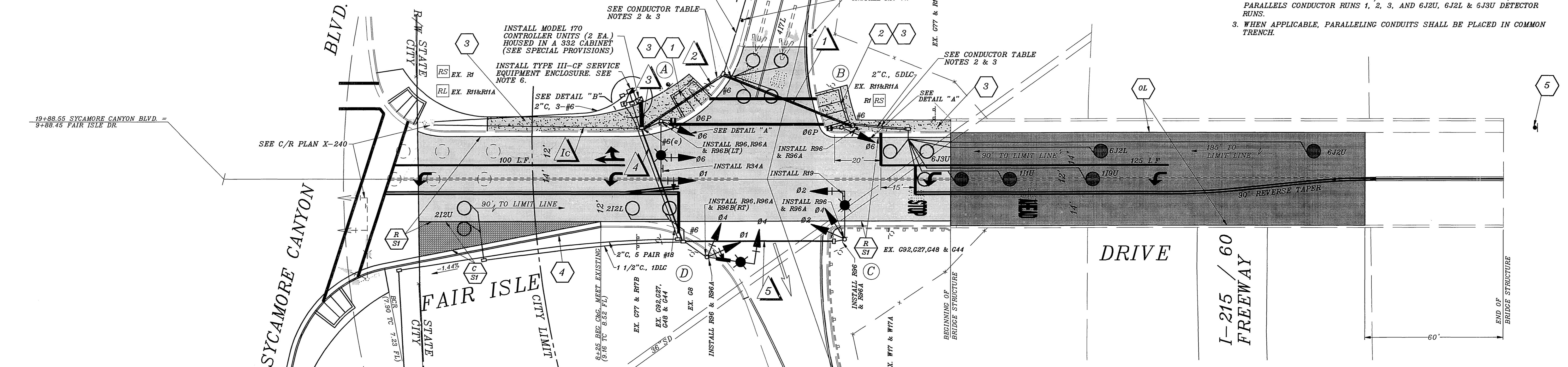


EQUIPMENT		SCHEDULE									
SIGNAL STANDARD NO.	LUMINAIRE TYPE	HEIGHT	M.A.	I.I.S.N.S. LEGEND	SIGNAL MOUNTINGS VEHICLE	PEDESTRIAN	AUDIBLE	PPB PHASE	REMARKS		
(A) 19-3-80	30'	25'	12'	200W	MAS				F = 12'-0"		
					MAS						
					SV-1-T	SP-1-T	N/A	6			
(B) 1A	10'				TV-1-T	SP-1-T	N/A	6			
(C) 17-2-80	30'	20'	12'	200W	MAS						
					SV-2-TD						
(D) 17-2-80	30'	20'	12'	200W	FAIR ISLE						
					MAS						
					SV-2-TD						

NOTES:
 1. ALL VEHICULAR HEADS SHALL HAVE 12" LENSES.
 2. ALL LEFT TURN HEADS SHALL HAVE ALL ARROWS.
 3. LUMINAIRES SHALL BE HIGH PRESSURE SODIUM VAPOR.
 4. PEDESTRIAN PUSH BUTTONS SHALL BE INSTALLED ON THE POLE IN THE QUADRANT NEAREST THE CROSSWALK SERVING THE PHASE.

CONDUCTOR		TABLE					
CONTROL FUNCTION	CONDUCTORS	CONDUCTOR RUNS					
		1	2	3	4	5	6
VEHICLE & PEDESTRIAN HEADS, PEDESTRIAN PUSH BUTTONS, SPARES & COMMONS	12 WIRE IMSA	-	-	3	2	1	-
	9 WIRE IMSA	1	1	1	-	-	-
	5 WIRE IMSA	-	-	-	-	-	-
	3 WIRE IMSA	1	1	4	2	1	-
DETECTOR CABLE	TYPE B	-	-	-	-	-	-
PHASE 1		2	2	2	-	-	-
PHASE 2		-	-	2	2	-	-
PHASE 3		-	-	-	-	-	-
PHASE 4		-	4	4	-	-	-
PHASE 5		-	-	-	-	-	-
PHASE 6		3	3	3	-	-	-
PHASE 7		-	-	-	-	-	-
PHASE 8		-	-	-	-	-	-
TOTALS		5	9	11	2	-	-
INTERCONNECT CABLE	12-PAIR #20	-	-	-	-	-	1
I.I.S.N.S.	#12	-	-	-	2	-	-
LUMINAIRES	#8	-	-	-	2	2	-
SIGNAL SERVICE	#2	-	-	-	-	-	-
CONDUIT SIZE		2"	3"	2-3"	3"	2"	1.5"

NOTES:
 1. SEE SPECIAL PROVISIONS FOR ADDITIONAL INFORMATION ON I.M.S.A. CABLE.
 2. CONTRACTOR SHALL INSTALL 1 1/2" CONDUIT FOR INTERCONNECT; CONDUIT PARALLELS CONDUCTOR RUNS 1, 2, 3, AND 6J2U, 6J2L & 6J3U DETECTOR RUNS.
 3. WHEN APPLICABLE, PARALLELING CONDUITS SHALL BE PLACED IN COMMON TRENCH.



CONSTRUCTION NOTES

- 1 Construct wheelchair ramp per State of California, Department of Transportation Standard Plan NSP A88 - Case E.
- 2 Construct wheelchair ramp per State of California, Department of Transportation Standard Plan NSP A88 - Case D.
- 3 Construct P.C.C. concrete curb sidewalk per City of Riverside Standard Drawing No. 325.
- 4 Construct P.C.C. concrete curb (8"C.F.) per State of California, Department of Transportation Standard Plan RSP A87-Type A2-8.
- 5 Remove ex. W17 sign and "STOP", "AHEAD" markings; Install W41(48") sign and "SIGNAL", "AHEAD" markings @ 500' ± to back of crosswalk.
- 6 Provide and install Telephone Demarcation Cabinet per State of California, Department of Transportation Standard Plan ES-4E and ES-4F.
- C Construct 0.36' Type 'A' asphalt concrete over 0.33' Class II base over compacted native soil: TI = 10; R = 70.
- OL Remove existing AC overlay (varies from .13' to .16' thickness), and construct 0.13' dense graded asphalt concrete (D2-AR-4000) overlay.
- R Remove existing pavement and construct 0.36' Type 'A' asphalt concrete over 0.33' Class II base.

GENERAL NOTES

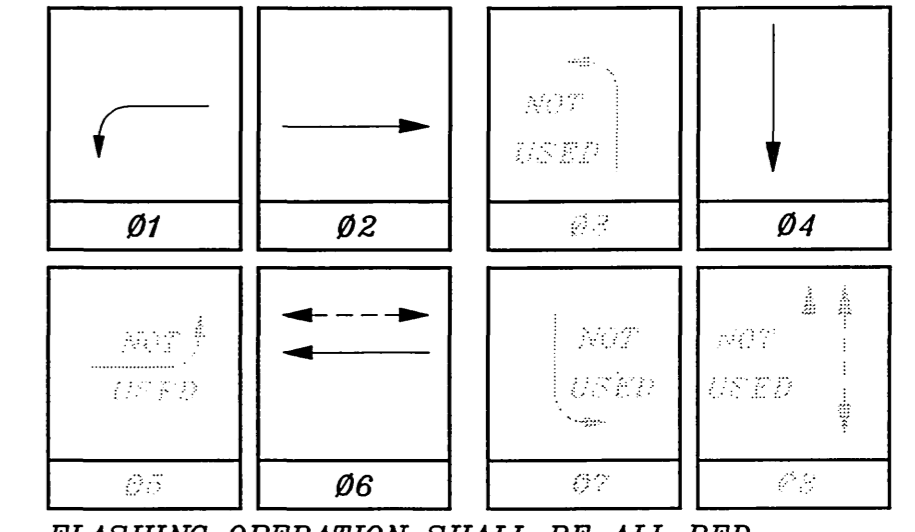
- 1 - Detector loops shall be installed in the presence of the Traffic Engineer or his representative.
- 2 - All signing, striping, and pavement marking requirements shall be completed prior to signal turn-on.
- 3 - Typical detector loop spacing: 10', 15' & 30' where applicable.
- 4 - See C/R plan R-3396 for additional street improvements.
- 5 - See C/R plan XL-286 for pavement delineation and signs.
- 6 - Contractor shall furnish shields for the PEU'S openings on the Service Cabinet.

DETECTOR SCHEDULE

LOOP DESIGNATION	NUMBER OF LOOPS
1HU	3
19U	1
212U	2
212L	2
416U	1
416L	1
417U	2
417L	4
6J2U	1
6J2L	1
6J3U	2

Detectors shall be 2-channel rack-mounted.

PHASE DIAGRAM



FLASHING OPERATION SHALL BE ALL RED.

PAVEMENT DELINEATION

- Indicates striping and pavement markings to be installed or replaced.
- == Indicates striping and pavement markings to remain.
- Indicates striping and pavement markings to be removed.

ENGINEER IN RESPONSIBLE CHARGE
 RICHARD D. McGRATH
 R.C.E. No. 31952
 DATE 1-17-96

CITY OF RIVERSIDE, CALIFORNIA
 DEPARTMENT OF PUBLIC WORKS

APPROVED BY: [Signature]
 PRINCIPAL ENGINEER
 P.W. INSPECTION: [Signature]
 TRAFFIC DIVISION: [Signature]
 CHIEF P.W. ENGR: [Signature]
 PUBLIC UTILITIES: [Signature]

DATE 1/18/96

TRAFFIC SIGNAL
FAIR ISLE DRIVE
I-215/60 FREEWAY

ACCT. NO. 0453-570400-45510
X-242
 SHEET 1 OF 1
 FILE NAME: X242.DWG

SCALE: 1" = 20'