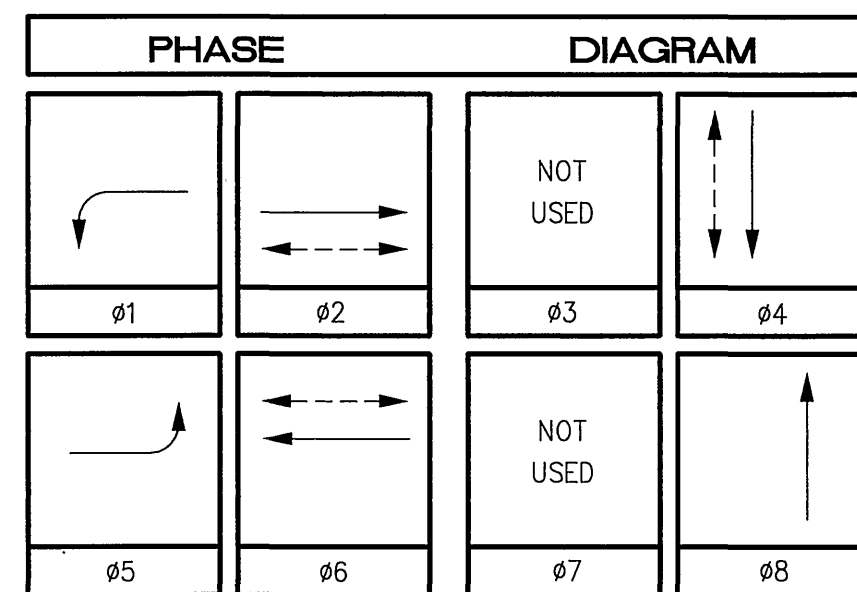
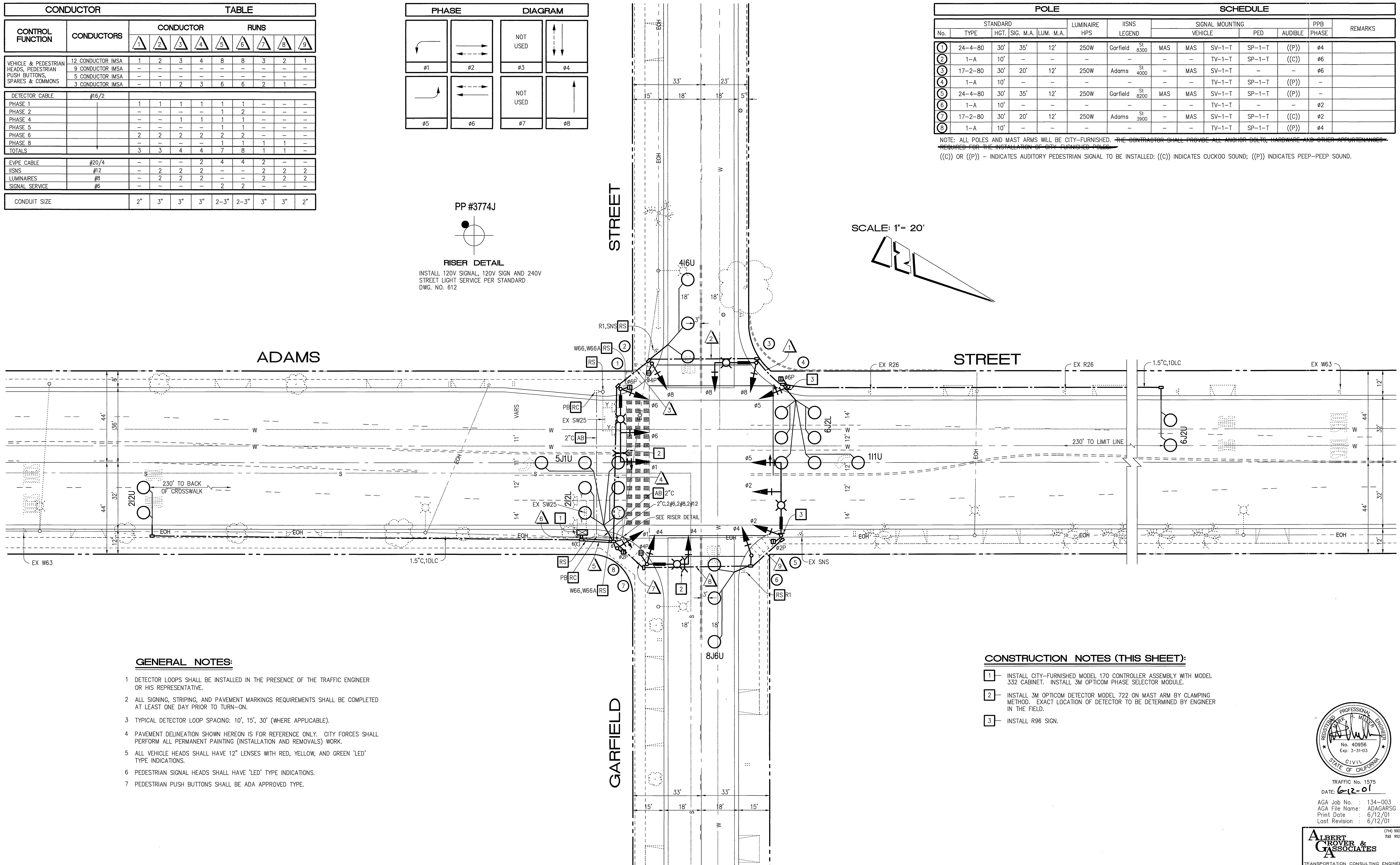
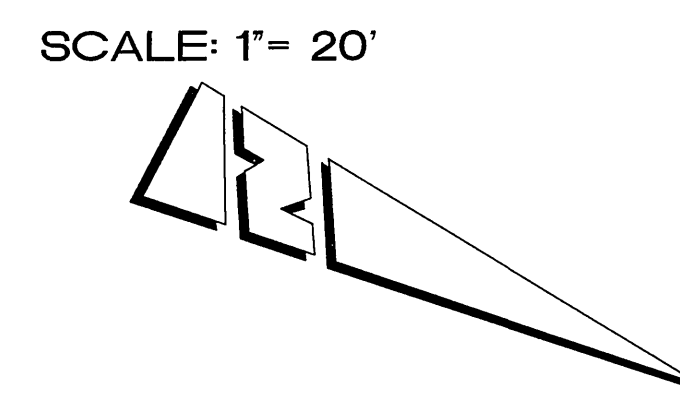
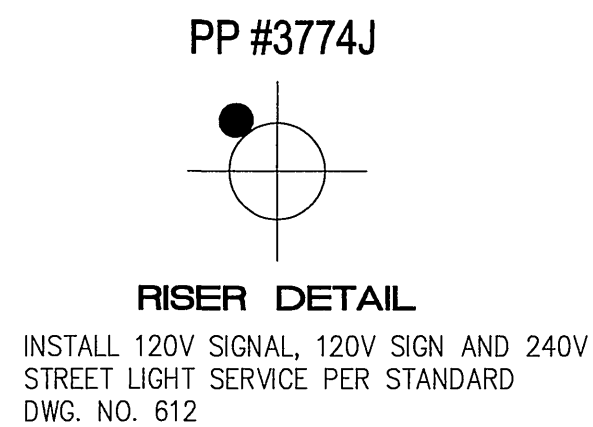


CONDUCTOR		TABLE								
CONTROL FUNCTION	CONDUCTORS	CONDUCTOR				RUNS				
		1	2	3	4	5	6	7	8	9
VEHICLE & PEDESTRIAN HEADS, PEDESTRIAN PUSH BUTTONS, SPARES & COMMONS	12 CONDUCTOR IMSA	1	2	3	4	8	8	3	2	1
	9 CONDUCTOR IMSA	-	-	-	-	-	-	-	-	-
	5 CONDUCTOR IMSA	-	-	-	-	-	-	-	-	-
	3 CONDUCTOR IMSA	-	1	2	3	6	6	2	1	-
DETECTOR CABLE	#16/2	1	1	1	1	1	1	-	-	-
PHASE 1		-	-	-	-	1	2	-	-	-
PHASE 2		-	-	1	1	1	1	-	-	-
PHASE 4		-	-	-	-	1	1	-	-	-
PHASE 5		-	-	-	-	1	1	-	-	-
PHASE 6		2	2	2	2	2	2	-	-	-
PHASE 8		-	-	-	-	1	1	1	1	-
TOTALS		3	3	4	4	7	8	1	1	-
EVPE CABLE	#20/4	-	-	-	2	4	4	2	-	-
IISNS	#12	-	2	2	2	-	-	2	2	2
LUMINAIRES	#8	-	2	2	2	-	-	2	2	2
SIGNAL SERVICE	#8	-	-	-	2	2	-	-	-	-
CONDUIT SIZE		2"	3"	3"	3"	2-3"	2-3"	3"	3"	2"



No.	TYPE	STANDARD				LUMINAIRE HPS	IISNS LEGEND	SCHEDULE			PPB PHASE	REMARKS	
		HGT.	SIG. M.A.	LUM. M.A.	SIGNAL MOUNTING VEHICLE			PED	AUDIBLE				
		30'	35'	12'						250W			
1	24-4-80	30'	35'	12'	250W	Garfield	St 8300	MAS	SV-1-T	SP-1-T	((P))	ø4	
2	1-A	10'	-	-	-	-	-	-	TV-1-T	SP-1-T	((C))	ø6	
3	17-2-80	30'	20'	12'	250W	Adams	St 4000	-	MAS	SV-1-T	-	-	ø6
4	1-A	10'	-	-	-	-	-	-	TV-1-T	SP-1-T	((P))	-	
5	24-4-80	30'	35'	12'	250W	Garfield	St 8200	MAS	SV-1-T	SP-1-T	((P))	-	
6	1-A	10'	-	-	-	-	-	-	TV-1-T	SP-1-T	-	-	ø2
7	17-2-80	30'	20'	12'	250W	Adams	St 3900	-	MAS	SV-1-T	SP-1-T	((C))	ø2
8	1-A	10'	-	-	-	-	-	-	TV-1-T	SP-1-T	((P))	ø4	

NOTE: ALL POLES AND MAST ARMS WILL BE CITY-FURNISHED. THE CONTRACTOR SHALL PROVIDE ALL ANCHOR BOLTS, HARDWARE AND OTHER APPURTENANCES REQUIRED FOR THE INSTALLATION OF CITY-FURNISHED POLES.
 ((C)) OR ((P)) - INDICATES AUDITORY PEDESTRIAN SIGNAL TO BE INSTALLED; ((C)) INDICATES CUCKOO SOUND; ((P)) INDICATES PEEP-PEEP SOUND.



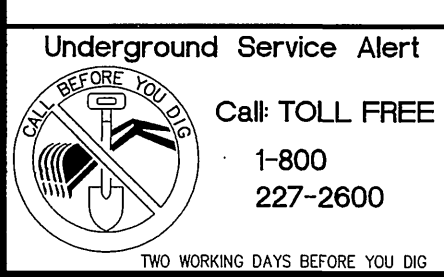
- GENERAL NOTES:**
- DETECTOR LOOPS SHALL BE INSTALLED IN THE PRESENCE OF THE TRAFFIC ENGINEER OR HIS REPRESENTATIVE.
 - ALL SIGNING, STRIPING, AND PAVEMENT MARKINGS REQUIREMENTS SHALL BE COMPLETED AT LEAST ONE DAY PRIOR TO TURN-ON.
 - TYPICAL DETECTOR LOOP SPACING: 10', 15', 30' (WHERE APPLICABLE).
 - PAVEMENT DELINEATION SHOWN HEREON IS FOR REFERENCE ONLY. CITY FORCES SHALL PERFORM ALL PERMANENT PAINTING (INSTALLATION AND REMOVALS) WORK.
 - ALL VEHICLE HEADS SHALL HAVE 12" LENSES WITH RED, YELLOW, AND GREEN 'LED' TYPE INDICATIONS.
 - PEDESTRIAN SIGNAL HEADS SHALL HAVE 'LED' TYPE INDICATIONS.
 - PEDESTRIAN PUSH BUTTONS SHALL BE ADA APPROVED TYPE.

- CONSTRUCTION NOTES (THIS SHEET):**
- INSTALL CITY-FURNISHED MODEL 170 CONTROLLER ASSEMBLY WITH MODEL 332 CABINET. INSTALL 3M OPTICOM PHASE SELECTOR MODULE.
 - INSTALL 3M OPTICOM DETECTOR MODEL 722 ON MAST ARM BY CLAMPING METHOD. EXACT LOCATION OF DETECTOR TO BE DETERMINED BY ENGINEER IN THE FIELD.
 - INSTALL R96 SIGN.

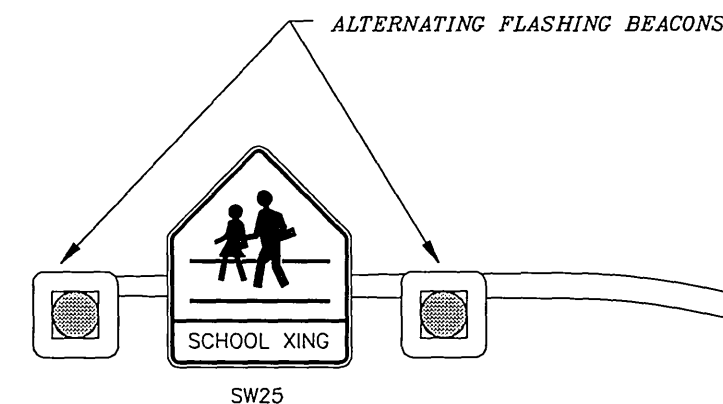


TRAFFIC No. 1575
 DATE: 6-12-01
 AGA Job No. : 134-003
 AGA File Name: ADAGARSG
 Print Date : 6/12/01
 Last Revision : 6/12/01

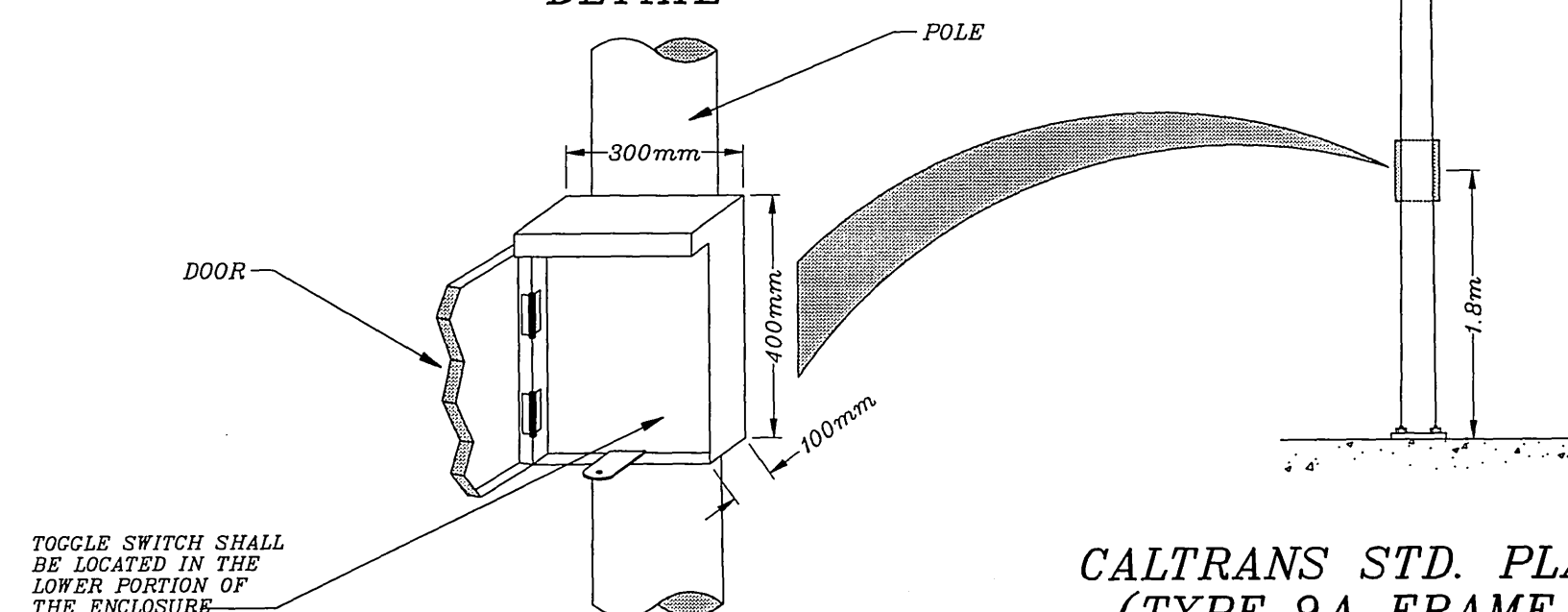
ALBERT GROVER & ASSOCIATES
 TRANSPORTATION CONSULTING ENGINEERS
 231 E. Imperial Hwy., Suite 208 Fullerton, CA 92833
 (714) 992-2990
 FAX 992-2883



CITY OF RIVERSIDE, CALIFORNIA DEPARTMENT OF PUBLIC WORKS				TRAFFIC SIGNAL PLAN		ACCOUNT NO.
APPROVED BY	DATE	BY	APPROVED BY	ADAMS STREET AT GARFIELD STREET		
PRINCIPAL ENGINEER	8/14/01	R. McSwath	PUBLIC WORKS DIRECTOR	X-247		
INSPECTION	8/14/01	R. McSwath		SHEET -- OF --		
TRAFFIC DIVISION	8/13/01	R. McSwath		HORIZ. SCALE: 1" = 20' VERT. SCALE: 1" = --		
CHIEF P. W. ENGINEER	8/14/01	R. McSwath				
PUBLIC UTILITIES	8/26/01	R. McSwath	DATE: 8-20-2001			



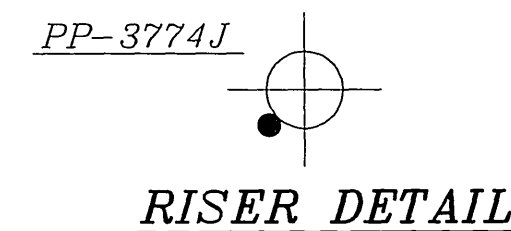
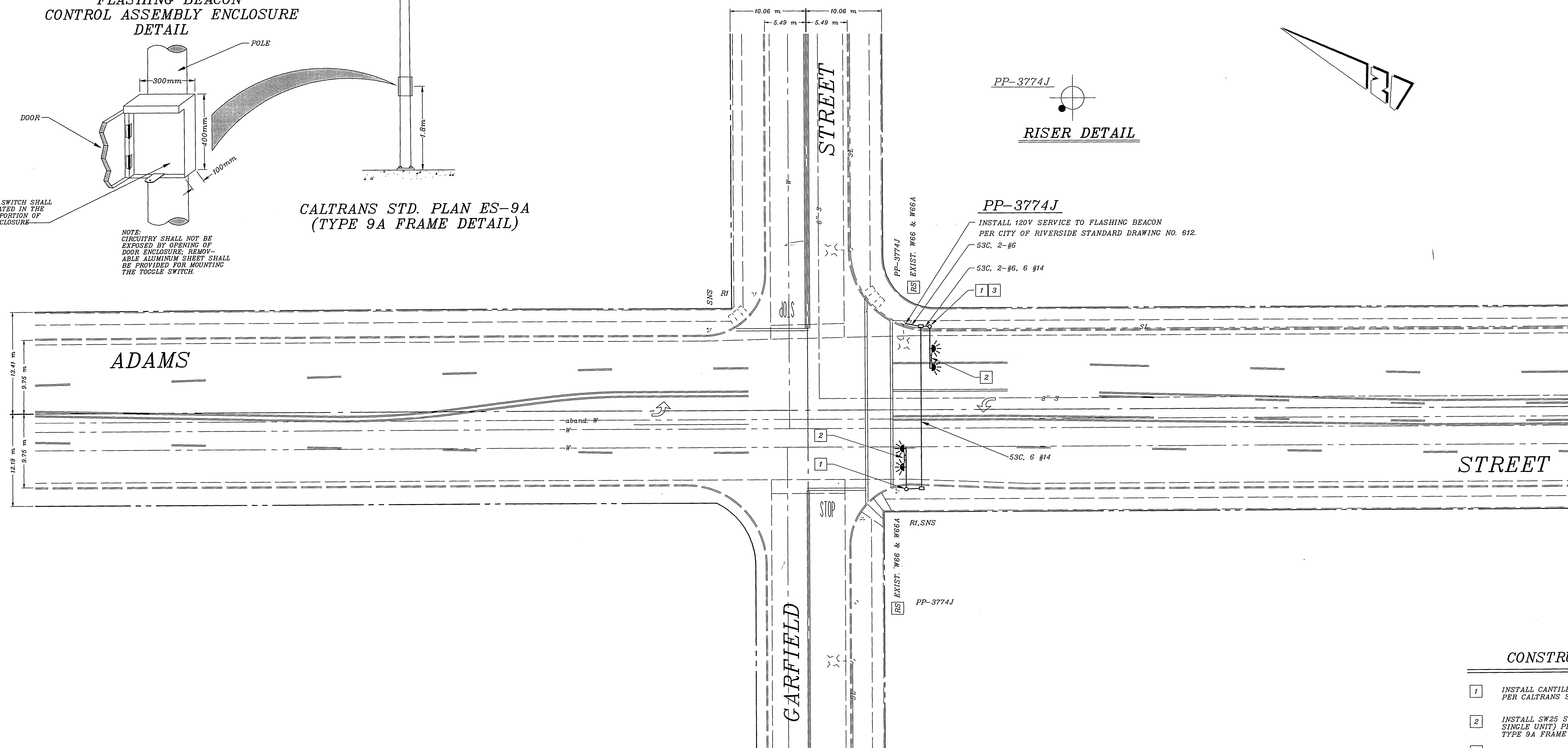
FLASHING BEACON CONTROL ASSEMBLY ENCLOSURE DETAIL



CALTRANS STD. PLAN ES-9A
(TYPE 9A FRAME DETAILS)

NOTE: CIRCUITRY SHALL NOT BE EXPOSED BY OPENING OF DOOR ENCLOSURE. REMOVABLE ALUMINUM SHEET SHALL BE PROVIDED FOR MOUNTING THE TOGGLE SWITCH.

TOGGLE SWITCH SHALL BE LOCATED IN THE LOWER PORTION OF THE ENCLOSURE



PP-3774J
INSTALL 120V SERVICE TO FLASHING BEACON PER CITY OF RIVERSIDE STANDARD DRAWING NO. 612.

CONSTRUCTION NOTES

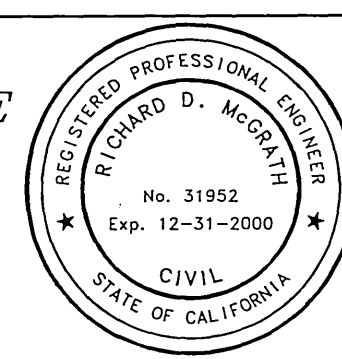
1. INSTALL CANTILEVER FLASHING BEACON (300mm LENS) PER CALTRANS STANDARD PLAN ES-9A.
2. INSTALL SW25 SIGN (W66 & W66A FABRICATED AS A SINGLE UNIT) PER CALTRANS STANDARD PLAN ES-9A TYPE 9A FRAME DETAILS.
3. INSTALL FLASHING BEACON CONTROL ASSEMBLY ON POLE. CIRCUITRY AND COMPONENTS SHALL CONFORM TO CALTRANS STANDARD PLAN ES-4C. OTHER REQUIREMENTS ARE AS FOLLOWS:
 - A. THE ASSEMBLY ENCLOSURE SHALL BE WEATHERPROOF.
 - B. MATERIAL: ANODIZED ALUMINUM, 0.125" THICKNESS.
 - C. DOOR SHALL BE LOCKABLE BY PADLOCK.
 - D. CIRCUITRY SHALL INCORPORATE A SOLID STATE TIMER AND TOGGLE SWITCH FOR PROGRAMMING AND MANUAL OPERATIONS, RESPECTIVELY. SEE DETAIL FOR PLACEMENT OF TOGGLE SWITCH.
 - E. CIRCUITRY SHALL PROVIDE FOR ALTERNATING FLASHING OF THE BEACONS.
 - F. SEE DETAIL REGARDING ALUMINUM SHEETING.

CONTRACT TE-97-10

IMPORTANT NOTICE
Section 4216/4217 of the Government Code requires a Dig Alert identification Number to be issued before a "Permit to Excavate" will be valid. For your Dig Alert I.D. Number call CALL TOLL FREE TWO WORKING DAYS BEFORE YOU DIG UNDERGROUND SERVICE ALERT 1-800-227-2600



ENGINEER IN RESPONSIBLE CHARGE
RICHARD D. McGRATH
R.C.E. NO. 31952 EXPIRES 12-31-2000
DATE C-17-98



CITY OF RIVERSIDE, CALIFORNIA DEPARTMENT OF PUBLIC WORKS	
APPROVED BY	BY DATE
PRINCIPAL ENGINEER	R. M. Butz 4/1/98
P.M. INSPECTION	
TRAFFIC DIVISION	Z 4/1/98
CHIEF P.W. ENGR	
PUBLIC UTILITIES	
DESIGNED BY	MAC
DRAWN BY	MAC
CHECKED BY	

FLASHING BEACON		ACCT. NO.
ADAMS STREET @ GARFIELD STREET		230-541600-440223-35097
		X-247
		SHEET 1 OF 1
SCALE 1:300		FILE NAME X247.DWG