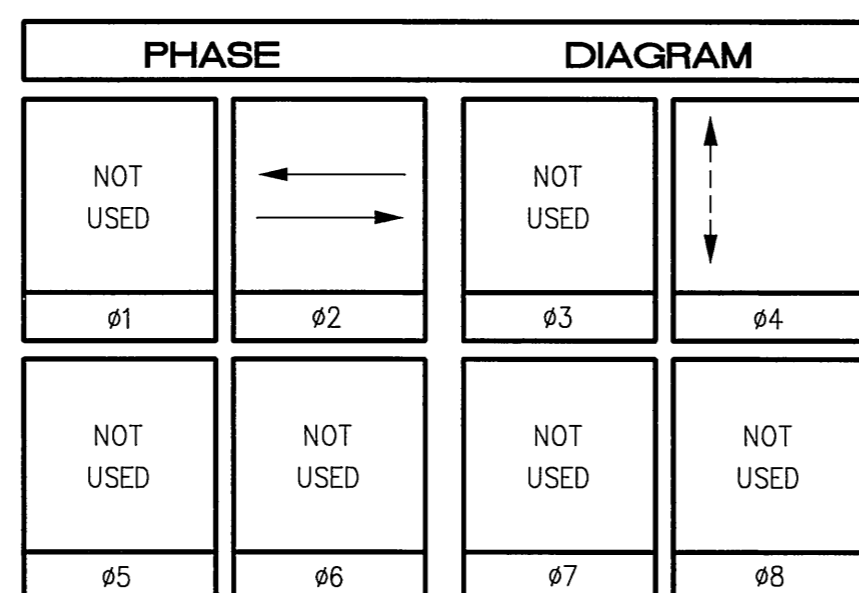


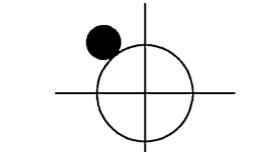
CONDUCTOR		TABLE					
CONTROL FUNCTION	CONDUCTORS	CONDUCTOR		RUNS			
		1	2	3	4	5	6
VEHICLE & PEDESTRIAN HEADS, PEDESTRIAN PUSH BUTTONS, SPARES & COMMONS	12 CONDUCTOR IMSA	1	-	1	-	1	2
	9 CONDUCTOR IMSA	-	-	-	-	-	-
	5 CONDUCTOR IMSA	-	1	1	1	-	2
	3 CONDUCTOR IMSA	-	1	1	1	-	2
DETECTOR CABLE	#16/2	-	-	1	-	-	2
PHASE 2		-	-	1	-	-	2
TOTALS		-	-	1	-	-	2
IISNS	#12	-	-	-	-	-	-
LUMINAIRES	#8	2	-	2	-	2	-
EVPE CABLE	#20/4	-	-	-	-	1	1
SIGNAL SERVICE	#6	-	-	-	-	-	2
CONDUIT SIZE		2"	2"	3"	2"	2"	2-3"



No.	TYPE	STANDARD				LUMINAIRE HPS	IISNS LEGEND	SCHEDULE				REMARKS	
		HGT.	SIG. M.A.	LUM. M.A.	SIGNAL MOUNTING								
		VEHICLE	PED	AUDIBLE	PPB PHASE								
1	17-2-80	30'	20'	12'	250W	-	-	MAS	SV-2-T	-	-	-	
2	1-A	7'	-	-	-	-	-	-	-	TP-1-T	((C))	#4	
3	17-2-80	30'	20'	12'	250W	-	-	MAS	SV-1-T	-	-	-	
4	1-A	7'	-	-	-	-	-	-	-	TP-1-T	((C))	#4	

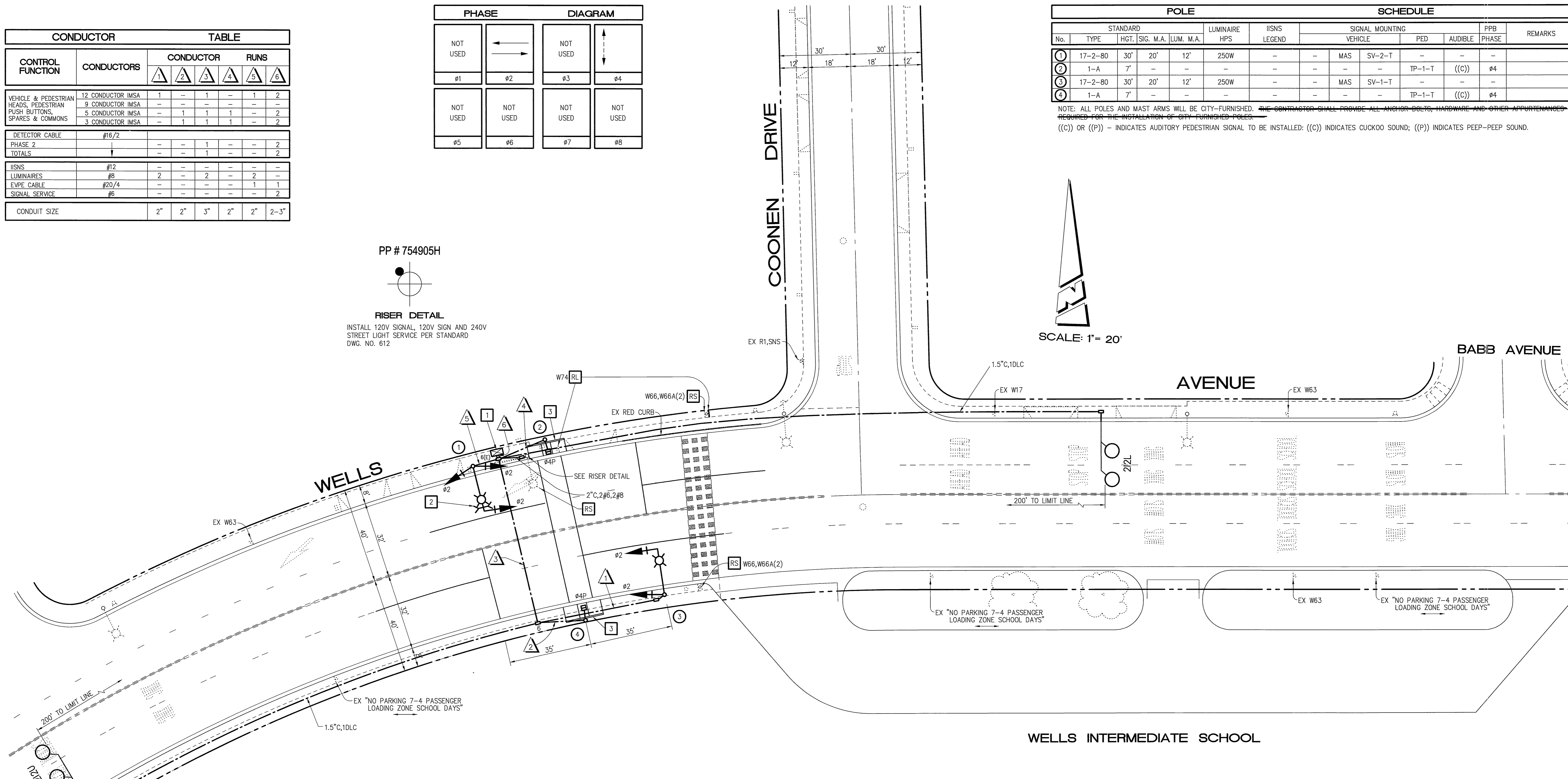
NOTE: ALL POLES AND MAST ARMS WILL BE CITY-FURNISHED. THE CONTRACTOR SHALL PROVIDE ALL ANCHOR BOLTS, HARDWARE AND OTHER APPURTENANCES REQUIRED FOR THE INSTALLATION OF CITY-FURNISHED POLES.  
 ((C)) OR ((P)) - INDICATES AUDITORY PEDESTRIAN SIGNAL TO BE INSTALLED; ((C)) INDICATES CUCKOO SOUND; ((P)) INDICATES PEEP-PEEP SOUND.

PP # 754905H



**RISER DETAIL**

INSTALL 120V SIGNAL, 120V SIGN AND 240V STREET LIGHT SERVICE PER STANDARD DWG. NO. 612



**GENERAL NOTES:**

- DETECTOR LOOPS SHALL BE INSTALLED IN THE PRESENCE OF THE TRAFFIC ENGINEER OR HIS REPRESENTATIVE.
- ALL SIGNING, STRIPING, AND PAVEMENT MARKINGS REQUIREMENTS SHALL BE COMPLETED AT LEAST ONE DAY PRIOR TO TURN-ON.
- TYPICAL DETECTOR LOOP SPACING: 10', 15', 30' (WHERE APPLICABLE).
- PAVEMENT DELINEATION SHOWN HEREON IS FOR REFERENCE ONLY. CITY FORCES SHALL PERFORM ALL PERMANENT PAINTING (INSTALLATION AND REMOVALS) WORK.
- ALL VEHICLE HEADS SHALL HAVE 12" LENSES WITH RED, YELLOW, AND GREEN 'LED' TYPE INDICATIONS.
- PEDESTRIAN SIGNAL HEADS SHALL HAVE 'LED' TYPE INDICATIONS.
- PEDESTRIAN PUSH BUTTONS SHALL BE ADA APPROVED TYPE.

**CONSTRUCTION NOTES (THIS SHEET):**

- INSTALL CITY-FURNISHED MODEL 170 CONTROLLER ASSEMBLY WITH MODEL 332 CABINET. INSTALL 3M OPTICOM PHASE SELECTOR MODULE.
- INSTALL 3M OPTICOM DETECTOR MODEL 722 ON MAST ARM BY CLAMPING METHOD. EXACT LOCATION OF DETECTOR TO BE DETERMINED BY ENGINEER IN THE FIELD.
- CONSTRUCT P.C.C. CURB RAMP PER CITY STD. (2 EA.)



TRAFFIC No. 1575  
DATE: 6-14-01

AGA Job No. : 134-003  
AGA File Name: WELCO05G  
Print Date : 6/13/01  
Last Revision : 6/13/01

**ALBERT GROVER & ASSOCIATES**  
TRANSPORTATION CONSULTING ENGINEERS  
211 E. Imperial Hwy., Suite 208 Fullerton, CA 92835

Underground Service Alert  
Call TOLL FREE  
1-800-227-2600  
TWO WORKING DAYS BEFORE YOU DIG

CITY OF RIVERSIDE PUBLIC WORKS DEPARTMENT				TRAFFIC SIGNAL PLANS		ACCOUNT NO.
APPROVED BY		DATE	BY	APPROVED BY		X-250
PRINCIPAL ENGINEER		3/14/01	SG	R. McBratt		
INSPECTION		6/13/01	CB	PUBLIC WORKS DIRECTOR		
TRAFFIC DIVISION		6/13/01	CB			
CHIEF P. W. ENGINEER		8/20/01	CB	DATE 8-20-2001		SHEET ___ OF ___
PUBLIC UTILITIES		8/20/01	CB			
DESIGNED BY		DRAWN BY		CHECKED BY		HORIZ. SCALE: 1" = 20' VERT. SCALE: 1" =