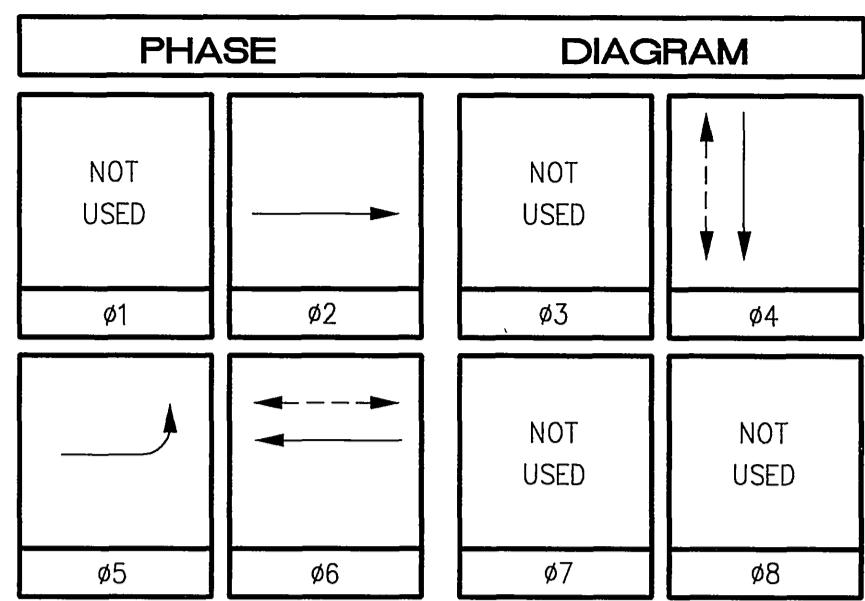
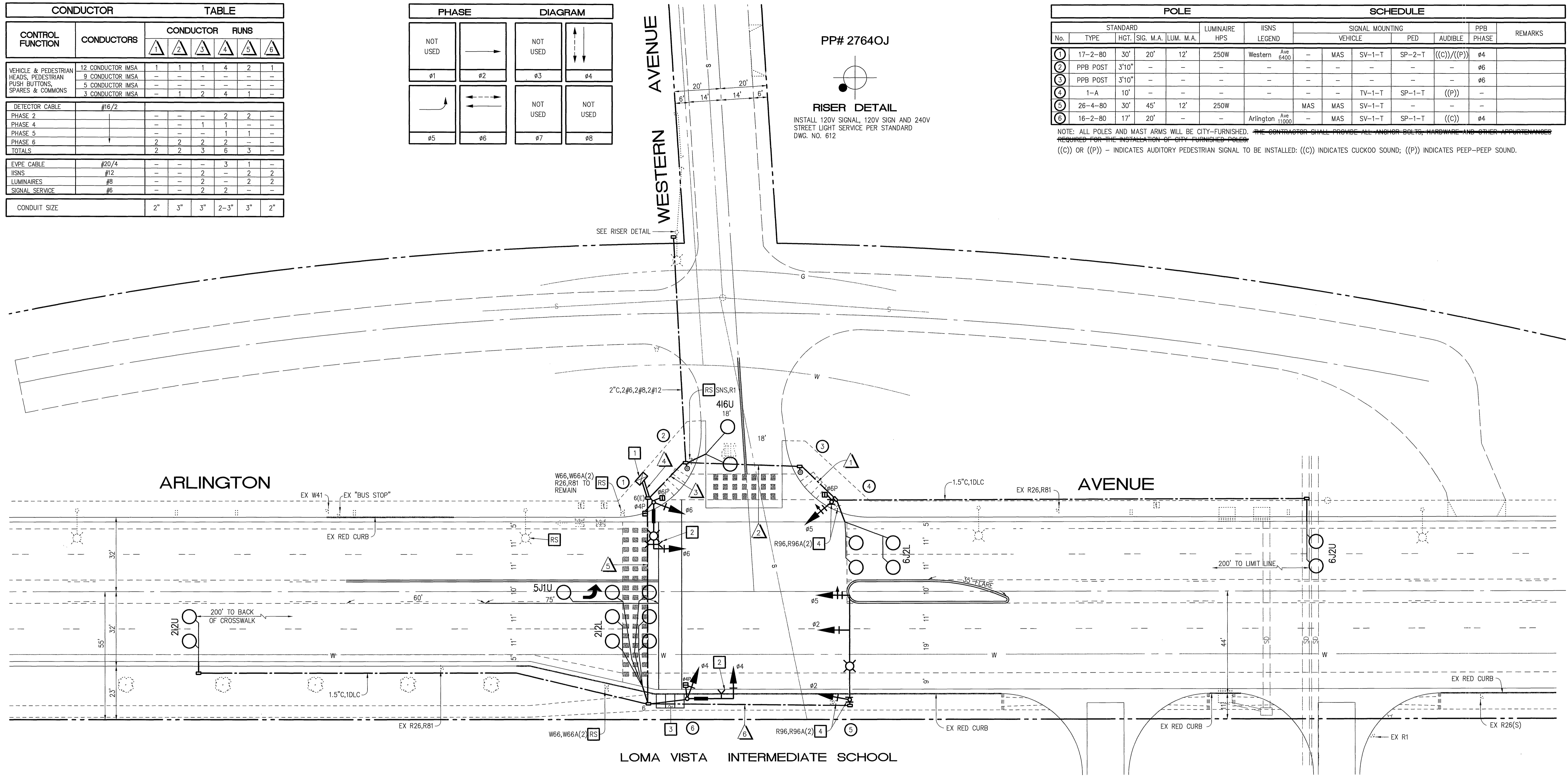


CONDUCTOR		TABLE					
CONTROL FUNCTION	CONDUCTORS	CONDUCTOR RUNS					
		1	2	3	4	5	6
VEHICLE & PEDESTRIAN HEADS, PEDESTRIAN PUSH BUTTONS, SPARES & COMMONS	12 CONDUCTOR IMSA	1	1	1	4	2	1
	9 CONDUCTOR IMSA	-	-	-	-	-	-
	5 CONDUCTOR IMSA	-	-	-	-	-	-
	3 CONDUCTOR IMSA	-	1	2	4	1	-
DETECTOR CABLE	#16/2	-	-	-	2	2	-
PHASE 2		-	-	-	2	2	-
PHASE 4		-	-	1	1	-	-
PHASE 5		-	-	-	1	1	-
PHASE 6		2	2	2	2	-	-
TOTALS		2	2	3	6	3	-
EVPE CABLE	#20/4	-	-	-	3	1	-
ISNS	#12	-	-	-	2	2	-
LUMINAIRES	#8	-	-	-	2	2	-
SIGNAL SERVICE	#5	-	-	-	2	2	-
CONDUIT SIZE		2"	3"	3"	2-3"	3"	2"



POLE		SCHEDULE											
No.	TYPE	STANDARD				LUMINAIRE HPS	ISNS LEGEND	SIGNAL MOUNTING				PPB PHASE	REMARKS
		HGT.	SIG. M.A.	LUM. M.A.				VEHICLE	PED	AUDIBLE			
1	17-2-80	30'	20'	12'	250W	Western Ave 6400	-	MAS	SV-1-T	SP-2-T	((C))/((P))	φ4	
2	PPB POST	3'10"	-	-	-	-	-	-	-	-	-	-	φ6
3	PPB POST	3'10"	-	-	-	-	-	-	-	-	-	-	φ6
4	1-A	10'	-	-	-	-	-	-	TV-1-T	SP-1-T	((P))	-	
5	26-4-80	30'	45'	12'	250W	Arlington Ave 11050	-	MAS	MAS	SV-1-T	-	-	-
6	16-2-80	17'	20'	-	-	-	-	MAS	SV-1-T	SP-1-T	((C))	φ4	

NOTE: ALL POLES AND MAST ARMS WILL BE CITY-FURNISHED. THE CONTRACTOR SHALL PROVIDE ALL ANCHOR BOLTS, HARDWARE AND OTHER APPURTENANCES REQUIRED FOR THE INSTALLATION OF CITY-FURNISHED POLES.
 ((C)) OR ((P)) - INDICATES AUDITORY PEDESTRIAN SIGNAL TO BE INSTALLED; ((C)) INDICATES CUCKOO SOUND; ((P)) INDICATES PEEP-PEEP SOUND.

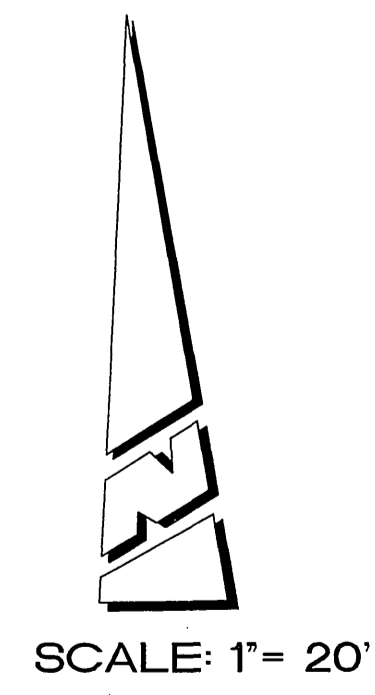


GENERAL NOTES:

- DETECTOR LOOPS SHALL BE INSTALLED IN THE PRESENCE OF THE TRAFFIC ENGINEER OR HIS REPRESENTATIVE.
- ALL SIGNING, STRIPING, AND PAVEMENT MARKINGS REQUIREMENTS SHALL BE COMPLETED AT LEAST ONE DAY PRIOR TO TURN-ON.
- TYPICAL DETECTOR LOOP SPACING: 10', 15', 30' (WHERE APPLICABLE).
- PAVEMENT DELINEATION SHOWN HEREON IS FOR REFERENCE ONLY. CITY FORCES SHALL PERFORM ALL PERMANENT PAINTING (INSTALLATION AND REMOVALS) WORK.
- ALL VEHICLE HEADS SHALL HAVE 12" LENSES WITH RED, YELLOW, AND GREEN 'LED' TYPE INDICATIONS.
- PEDESTRIAN SIGNAL HEADS SHALL HAVE 'LED' TYPE INDICATIONS.
- PEDESTRIAN PUSH BUTTONS SHALL BE ADA APPROVED TYPE.

CONSTRUCTION NOTES (THIS SHEET):

- INSTALL CITY-FURNISHED MODEL 170 CONTROLLER ASSEMBLY WITH MODEL 332 CABINET. INSTALL 3M OPTICOM PHASE SELECTOR MODULE.
- INSTALL 3M OPTICOM DETECTOR MODEL 722 ON MAST ARM BY CLAMPING METHOD. EXACT LOCATION OF DETECTOR TO BE DETERMINED BY ENGINEER IN THE FIELD.
- CONSTRUCT P.C.C. CURB RAMP PER CITY STD. (1 EA.).
- RELOCATE SIGN PANELS TO SIGNAL POLE. REMOVE SIGN POST.



TRAFFIC No. 1575
 DATE: 6-13-01
 AGA Job No. : 134-003
 AGA File Name: ARLWSSG
 Print Date : 6/13/01
 Last Revision : 6/13/01

ALBERT CROVER & ASSOCIATES
 TRANSPORTATION CONSULTING ENGINEERS
 210 E. Imperial Hwy., Suite 200 Fullerton, CA 92835
 (714) 992-2999
 FAX 992-2853

Underground Service Alert
 Call TOLL FREE
 1-800
 227-2600
 TWO WORKING DAYS BEFORE YOU DIG

CITY OF RIVERSIDE, CALIFORNIA DEPARTMENT OF PUBLIC WORKS				TRAFFIC SIGNAL PLAN		ACCOUNT NO.
APPROVED BY	DATE	BY	APPROVED BY	ARLINGTON AVENUE AT WESTERN AVENUE		
PRINCIPAL ENGINEER	8/14/01	[Signature]	PUBLIC WORKS DIRECTOR	X-252		
INSPECTION	8/14/01	[Signature]		SHEET ___ OF ___		
TRAFFIC DIVISION	8/14/01	[Signature]		HORIZ. SCALE: 1" = 20' VERT. SCALE: 1" = -		
CHIEF P. W. ENGINEER	8/14/01	[Signature]				
PUBLIC UTILITIES	8/14/01	[Signature]				
DESIGNED BY	DRAWN BY	CHECKED BY	DATE			