

### CONDUCTOR TABLE

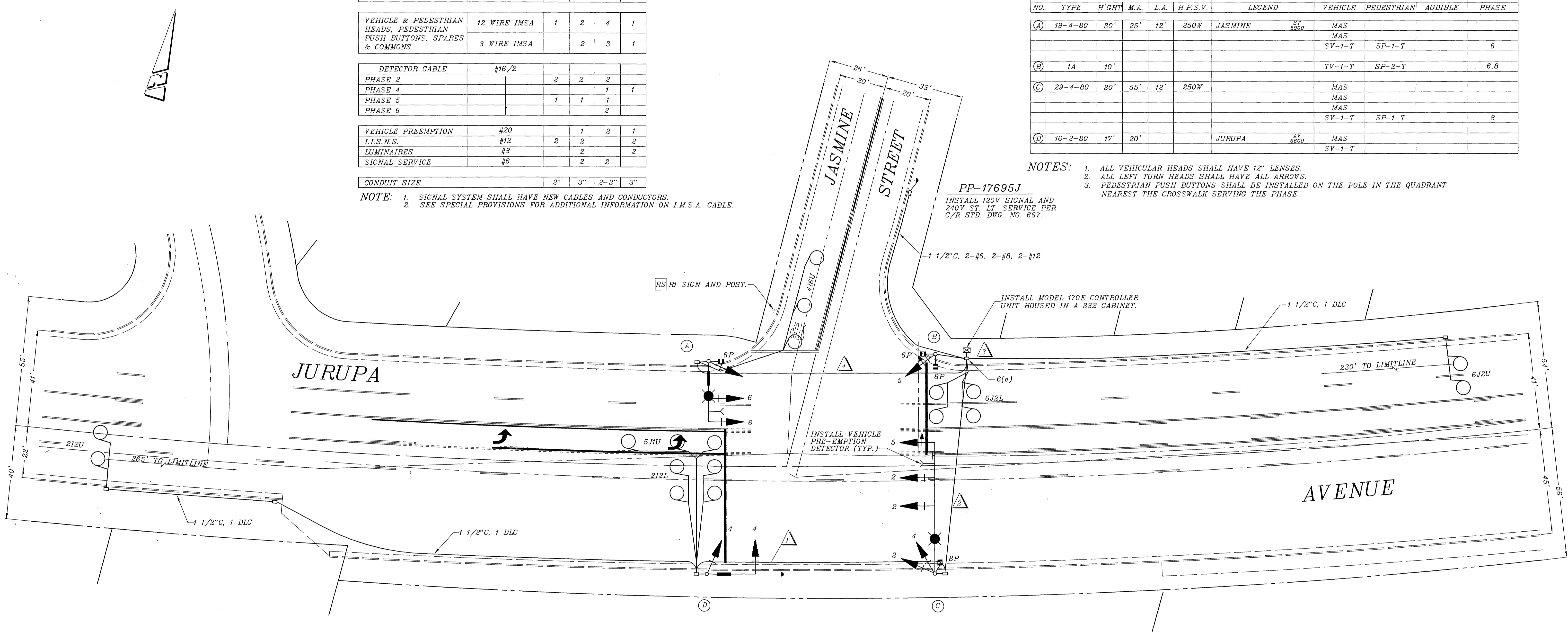
CONTROL FUNCTION	CONDUCTORS	CONDUCTOR RUNS			
		1	2	3	4
VEHICLE & PEDESTRIAN HEADS, PEDESTRIAN PUSH BUTTONS, SPARES & COMMONS	12 WIRE IMSA	1	2	4	1
	3 WIRE IMSA		2	3	1
DETECTOR CABLE #16/2					
PHASE 2		2	2	2	
PHASE 4				1	1
PHASE 5		1	1	1	
PHASE 6				2	
VEHICLE PREEMPTION #20					
I.I.S.N.S.	#12	2	2	2	
LUMINAIRES	#8		2	2	
SIGNAL SERVICE	#6		2	2	
CONDUIT SIZE					
		2"	3"	2-3"	3"

NOTE: 1. SIGNAL SYSTEM SHALL HAVE NEW CABLES AND CONDUCTORS.  
2. SEE SPECIAL PROVISIONS FOR ADDITIONAL INFORMATION ON I.M.S.A. CABLE.

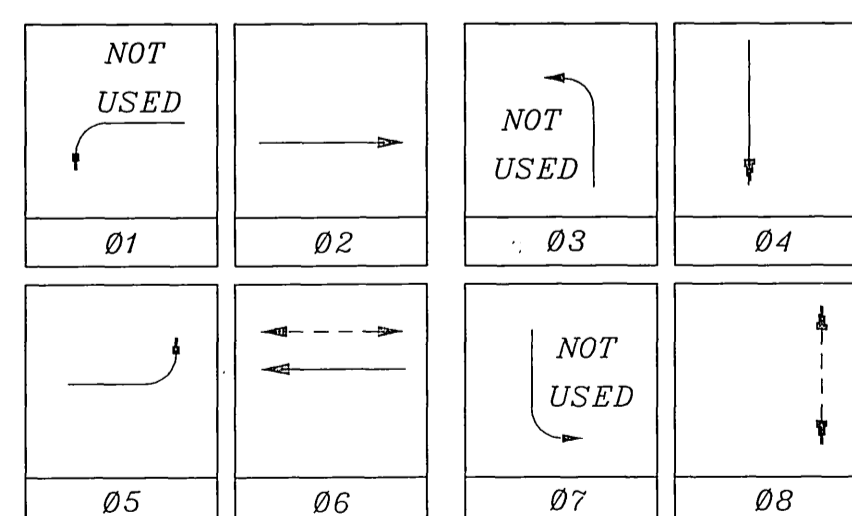
### EQUIPMENT SCHEDULE

NO.	SIGNAL STANDARD		LUMINAIRE		I.I.S.N.S. LEGEND	SIGNAL MOUNTINGS			PPB PHASE	
	TYPE	H'GHT	M.A.	L.A.		H.P.S.V.	VEHICLE	PEDESTRIAN		AUDIBLE
(A)	19-4-80	30'	25'	12'	250W	JASMINE	MAS			
							MAS			
							SV-1-T	SP-1-T		6
(B)	1A	10'								6,8
(C)	29-4-80	30'	55'	12'	250W		MAS			
							MAS			
							MAS			
							SV-1-T	SP-1-T		8
(D)	16-2-80	17'	20'			JURUPA	MAS			
							SV-1-T			

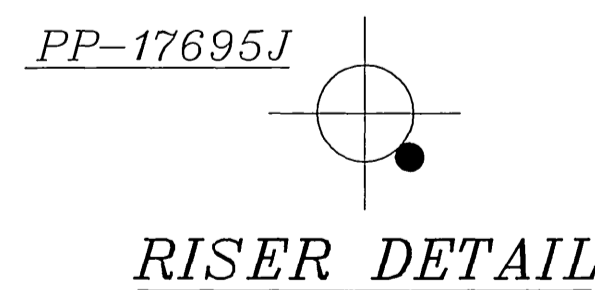
NOTES: 1. ALL VEHICULAR HEADS SHALL HAVE 12" LENSES.  
2. ALL LEFT TURN HEADS SHALL HAVE ALL ARROWS.  
3. PEDESTRIAN PUSH BUTTONS SHALL BE INSTALLED ON THE POLE IN THE QUADRANT NEAREST THE CROSSWALK SERVING THE PHASE.



### PHASE DIAGRAM



FLASHING OPERATION SHALL BE ALL RED.



### PAVEMENT DELINEATION

- Indicates striping and pavement markings to be installed.
- Indicates striping and pavement markings to remain.
- Indicates striping and pavement markings to be removed.

NOTE: All pavement delineation work shall be performed by City of Riverside forces; See Special Provisions.

### GENERAL NOTES

- Detector loops shall be installed in the presence of the Traffic Engineer or his representative.
- All signing, striping, and pavement marking requirements shall be completed at least one day prior to turn-on.
- Typical detector loop spacing: 10' and 15' (where applicable).

CONTRACT TE-02-05

**IMPORTANT NOTICE**  
Section 4216/4217 of the Government Code requires a Dig Alert Identification Number to be issued before a "Dig to Excavate" will be void. For your Dig Alert I.D. Number call CALL TOLL FREE TWO WORKING DAYS BEFORE YOU DIG UNDERGROUND SERVICE ALERT 1-800-227-2600

**ENGINEER IN RESPONSIBLE CHARGE**  
THOMAS JOHN BOYD  
R.C.E. No. 36170 expires  
DATE

REGISTERED PROFESSIONAL ENGINEER  
THOMAS JOHN BOYD  
No. 36170  
Exp. 06-30-2004  
CIVIL  
STATE OF CALIFORNIA

MARK	REVISIONS	APPR	DATE

CITY OF RIVERSIDE, CALIFORNIA  
DEPARTMENT OF PUBLIC WORKS

APPROVED BY	BY	DATE	APPROVED BY
PRINCIPAL ENGINEER	Mac	3/10/03	Tom Boyd
TRAFFIC DIVISION		3/10/03	CITY ENGINEER
PUBLIC UTILITIES		3/14/03	

DESIGNED BY: MAC DRAWN BY: MAC CHECKED BY:

TRAFFIC SIGNAL  
JURUPA AVENUE AND JASMINE STREET  
SCALE: 1" = 20'

ACCT. NO. 9761200601-44044600  
X-262  
SHEET 1 OF 1  
FILE NAME: X262.DWG