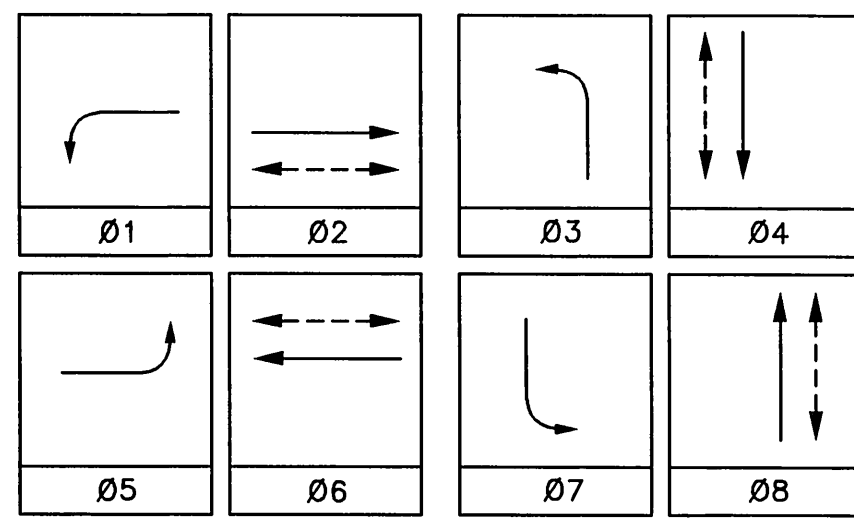


**CONDUCTOR TABLE**

CONTROL FUNCTION	CONDUCTORS	CONDUCTOR RUNS												
		1	2	3	4	5	6	7	8	9				
VEHICLE & PEDESTRIAN HEADS, PEDESTRIAN PUSH BUTTONS, SPARES & COMMONS	12 WIRE IMSA	1	2	3	4	8	3	2	1	8				
	3 WIRE IMSA	1	1	2	2	4	1	1	-	4				
DETECTOR CABLE #16/2														
PHASE 1					1	1				1				
PHASE 2					2	2	2	2	2	2				
PHASE 3					1	1				1				
PHASE 4			2	2	2	2				2				
PHASE 5					1	1	1	1	1	1				
PHASE 6					2	2				2				
PHASE 7			1	1	1	1				1				
PHASE 8					2	2				2				
TOTAL		-	3	3	6	12	6	3	3	12				
VEHICLE PREEMPTION	#20	1	1	2	2	4	1	1		4				
I.I.S.N.S.	#12	2	2	2	2	-	2	2						
LUMINAIRES	#8	2	2	2	2	-	2	2						
SIGNAL SERVICE	#6					2				2				
INTERCONNECT	6 PAIR #19					1	1	(E)	1	(E)	1	(E)	1	(E)

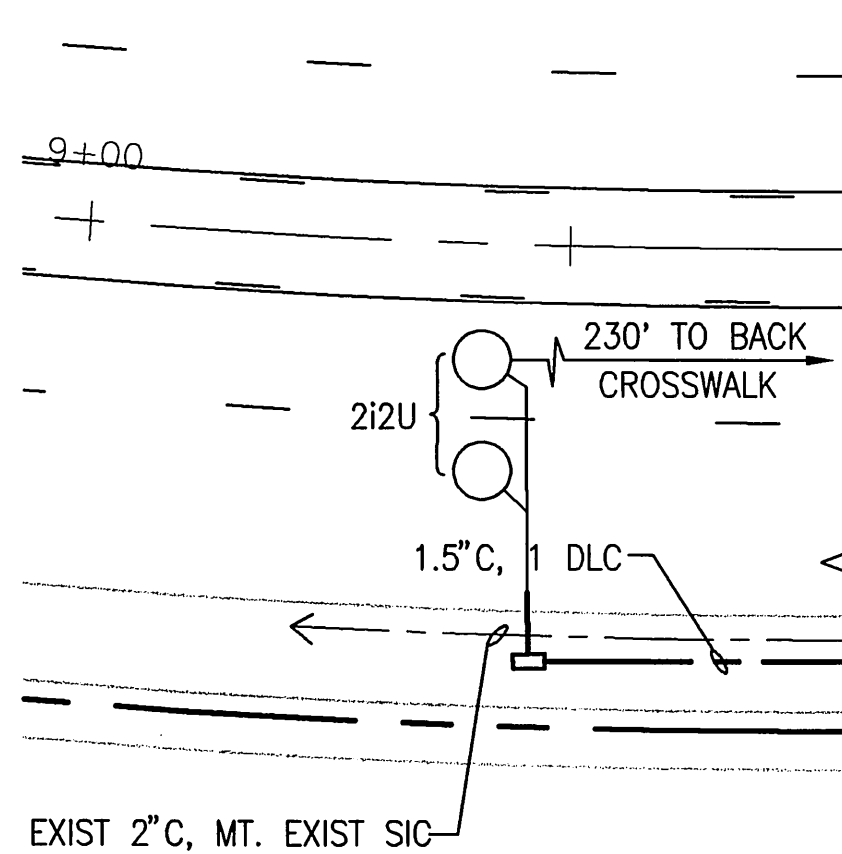
CONDUIT SIZE	2"(E)	2.5"(E)	3"(E)	3"(E)	2-3"(N)	2-2"(N)	3.5"(E)	3"(E)	2"(E)	2-3.5"(N)
NOTE:	1. SIGNAL SYSTEM SHALL HAVE NEW CABLES AND CONDUCTORS.									
	2. SEE SPECIAL PROVISIONS FOR ADDITIONAL INFORMATION ON I.M.S.A. CABLE.									
	(E) = EXISTING (N) = NEW									

**PHASE DIAGRAM**



FLASHING OPERATION SHALL BE ALL RED.

**CORPORATE CENTRE**



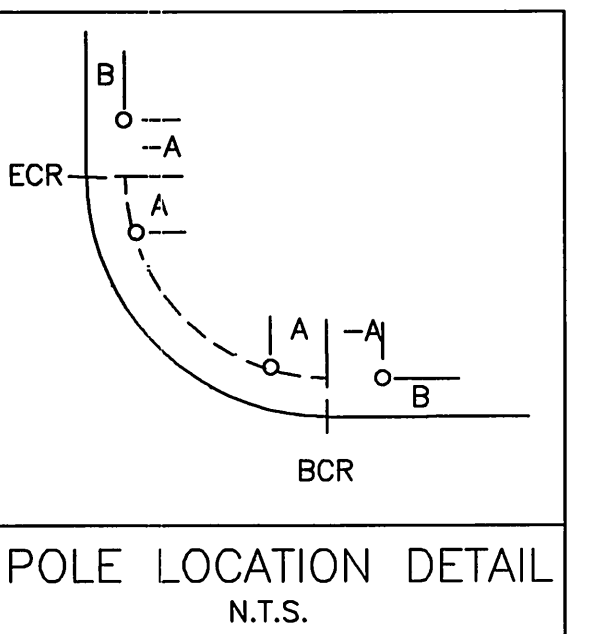
**PAVEMENT DELINEATION**

- INDICATES STRIPING AND PAVEMENT MARKINGS TO BE INSTALLED. INSTALL NEW CROSSWALK PER DIMENSION SHOWN FROM EXISTING POLE
- INDICATES STRIPING AND PAVEMENT MARKINGS TO REMAIN
- INDICATES STRIPING AND PAVEMENT MARKINGS TO BE REMOVED

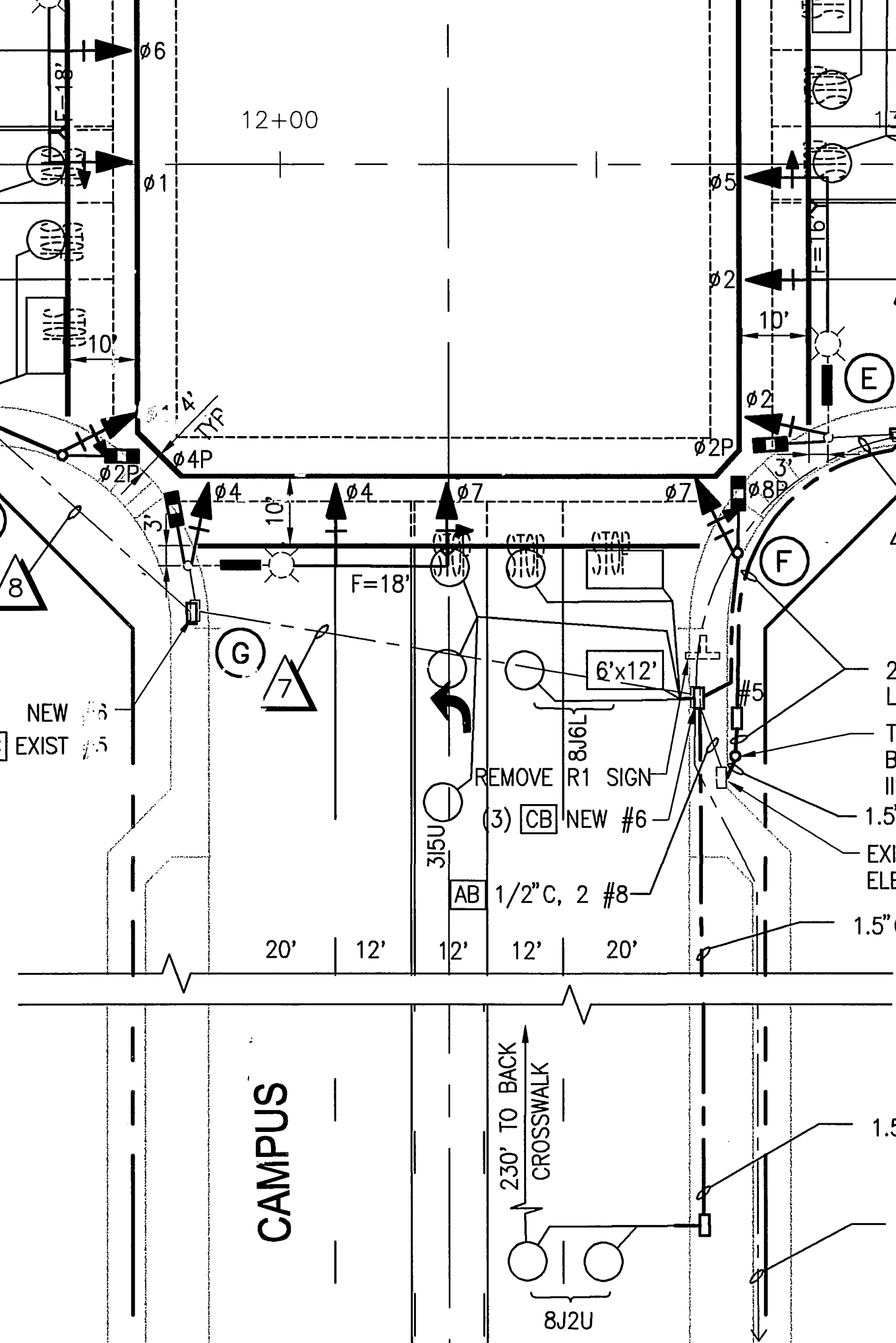
**EQUIPMENT SCHEDULE**

NO.	SIGNAL STANDARD		LUMINAIRE		I.I.S.N.S. LEGEND	SIGNAL MOUNTINGS			PPB PHASE	POLE LOCATION	
	TYPE	H'GHT	M.A.	L.A.		H.P.S.V.	VEHICLE	PEDESTRIAN		AUDIBLE	A
(A)	26-4-129(E)	30'	40'	12'(E)	250W(E)	Campus	PKWY 2700	MAS		4	EXISTING
								MAS			
								SV-1-T	SP-1-T		
(B)	1A	10'						TV-1-T	SP-1-T	6	13' 5'
(C)	26-4-129(E)	30'	40'	12'(E)	250W(E)	Corporate Centre	PKWY 6100	MAS		6	EXISTING
								MAS			
								SV-1-T	SP-1-T		
(D)	1A	10'						TV-1-T	SP-1-T		15' 5'
(E)	26-4-129(E)	30'	40'	12'(E)	250W(E)	Campus	PKWY 2600	MAS		8	EXISTING
								MAS			
								SV-1-T	SP-1-T		
(F)	1A	10'						TV-1-T	SP-1-T	2	12' 5'
(G)	26-4-129(E)	30'	40'	12'(E)	250W(E)	Corporate Centre	PKWY 6200	MAS		2	EXISTING
								MAS			
								SV-1-T	SP-1-T		
(H)	1A	10'						TV-1-T	SP-1-T	4	12' 5'

- NOTES:
- ALL EQUIPMENT IS NEW EXCEPT WHEN NOTED (E) = EXISTING
  - ALL VEHICULAR HEADS SHALL HAVE 12" LENSES.
  - ALL LEFT TURN HEADS SHALL HAVE ALL ARROWS.
  - PEDESTRIAN PUSH BUTTONS SHALL BE INSTALLED ON THE POLE IN THE QUADRANT NEAREST THE CROSSWALK SERVING THE PHASE.
- ◆ = POLES WERE INSTALLED PER 1984 CALTRANS STD PLANS. CONTRACTOR SHALL FIELD VERIFY DIMENSIONS PRIOR TO ORDERING NEW SMA TO BE INSTALLED ON THIS PLAN.



**CAMPUS**



**GENERAL NOTES**

- DETECTOR LOOPS SHALL BE INSTALLED IN THE PRESENCE OF THE TRAFFIC ENGINEER OR HIS REPRESENTATIVE.
- ALL SIGNING, STRIPING AND PAVEMENT MARKING REQUIREMENTS SHALL BE COMPLETED AT LEAST ONE DAY PRIOR TO TURN-ON.
- TYPICAL DETECTOR LOOP SPACING 10' AND 15' (WHERE APPLICABLE).

**IMPORTANT NOTICE**  
 Section 4216/4217 of the Government Code requires a Dig Alert Identification Number to be stamped before a "Permit to Excavate" will be valid. For your Dig Alert ID Number call CALL TOLL FREE TWO WORKING DAYS BEFORE YOU DIG UNDERGROUND SERVICE ALERT 1-800-227-2600

ENGINEER IN RESPONSIBLE CHARGE  
 STEVEN B. FRIESON  
 R.C.E. No. 42310 expires 3/31/06  
 DATE: April 20, 2009

PROFESSIONAL ENGINEER  
 STEVEN B. FRIESON  
 No. CD42110  
 Exp. 3/31/06  
 CIVIL  
 STATE OF CALIFORNIA

MARK REVISIONS APPR. DATE  
 DESIGNED BY: TZ DRAWN BY: KT CHECKED BY: SBF

CITY OF RIVERSIDE, CALIFORNIA  
 DEPARTMENT OF PUBLIC WORKS  
 APPROVED BY: [Signature] DATE: 4/27/09  
 TRAFFIC DIVISION: [Signature] DATE: 4/27/09  
 PUBLIC UTILITIES: [Signature] DATE: 4/27/09

CONTRACT TE-03-03  
 TRAFFIC SIGNAL  
 CORPORATE CENTRE PLACE AND CAMPUS PARKWAY  
 ACCT. NO. 2390240 - 455023  
**X-271**  
 SHEET 1 OF 1  
 FILE NAME: X271.DWG  
 SCALE: 1" = 20'