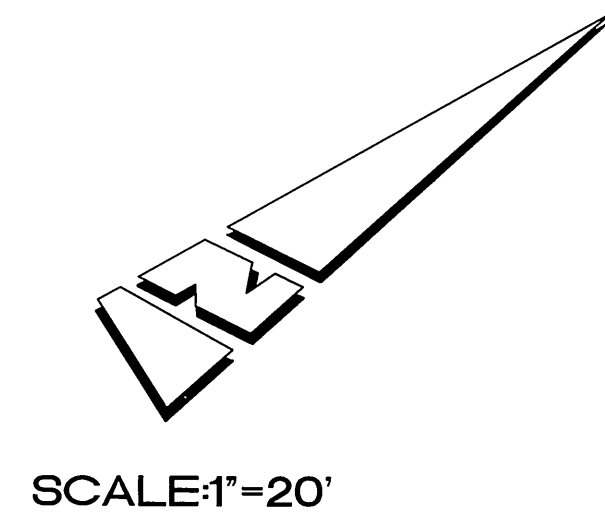


CONDUCTOR		TABLE					
CONTROL FUNCTION	CONDUCTORS	CONDUCTOR RUNS					
		1	2	3	4	5	6
VEHICLE & PEDESTRIAN HEADS, PEDESTRIAN PUSH BUTTONS, SPARES & COMMONS	12 CONDUCTOR IMSA	1	5	3	2	1	1
DETECTOR CABLE	#16/2	-	2	-	-	-	-
PHASE 2		-	2	-	-	-	-
PHASE 4		-	2	2	2	-	-
PHASE 5		-	1	-	-	-	-
PHASE 6		-	2	2	2	2	2
TOTALS		-	7	4	4	2	2
EVPE CABLE	#20/4	1	3	1	-	-	-
IISNS	#12	2	-	2	-	-	-
LUMINAIRES	#8	2	-	2	2	2	-
SIGNAL SERVICE	#6	-	2	-	-	-	-
INTERCONNECT	SIC	-	1,1(E)	1,1(E)	-	-	-
CONDUIT SIZE		2"	2-3"	3.5"	3"	3"	2"

(E)= EXISTING TO BE REUSED

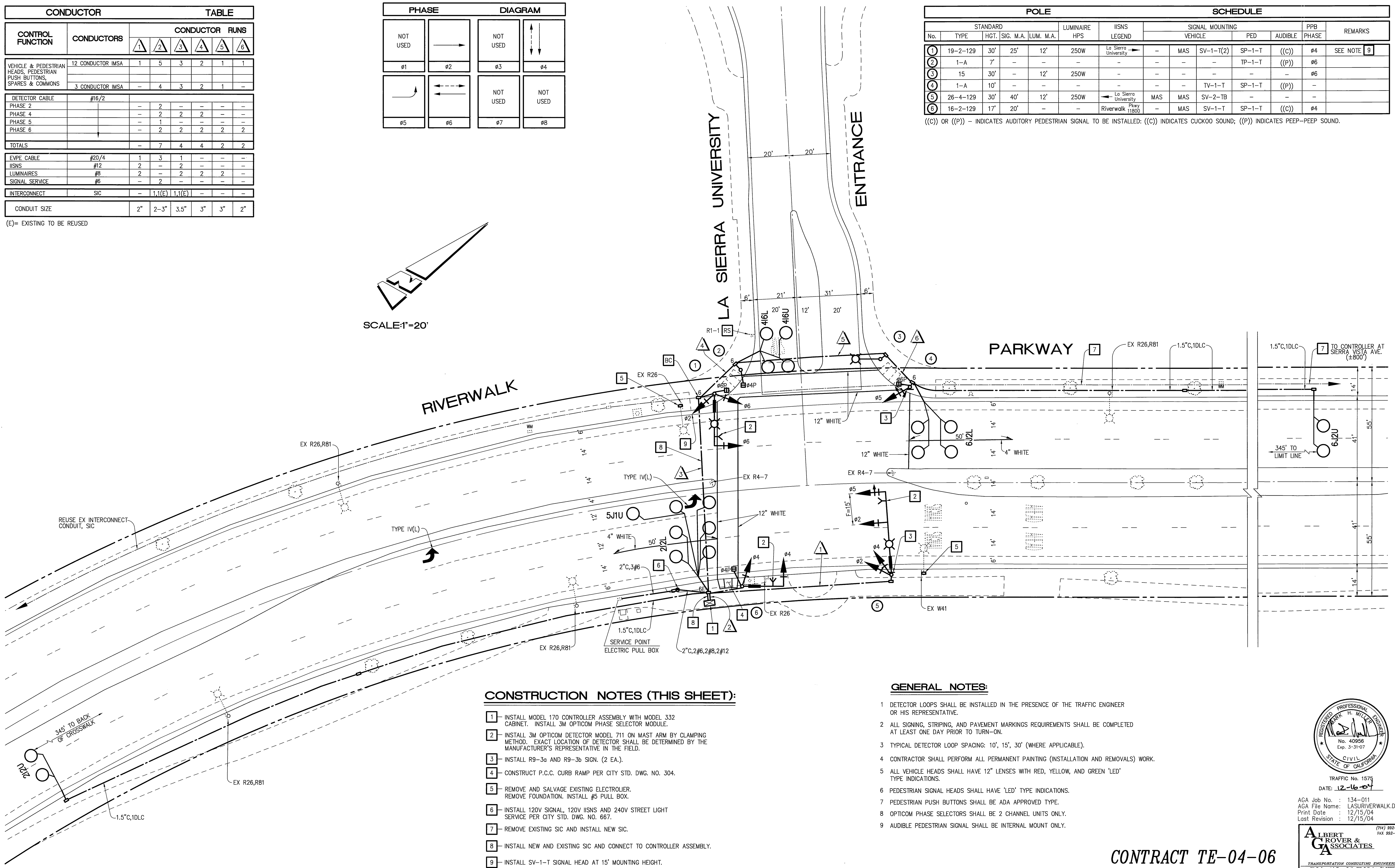
PHASE		DIAGRAM	
NOT USED		NOT USED	
ø1	ø2	ø3	ø4
		NOT USED	NOT USED
ø5	ø6	ø7	ø8



SCALE: 1"=20'

POLE							SCHEDULE						
No.	TYPE	STANDARD			LUMINAIRE HPS	IISNS LEGEND	SIGNAL MOUNTING			PPB PHASE	REMARKS		
		HGT.	SIG. M.A.	LUM. M.A.			VEHICLE	PED	AUDIBLE				
1	19-2-129	30'	25'	12'	250W	La Sierra University	-	MAS	SV-1-T(2)	SP-1-T	((C))	ø4	SEE NOTE 9
2	1-A	7'	-	-	-	-	-	-	-	TP-1-T	((P))	ø6	
3	15	30'	-	12'	250W	-	-	-	-	-	-	ø6	
4	1-A	10'	-	-	-	-	-	-	-	TV-1-T	SP-1-T	((P))	-
5	26-4-129	30'	40'	12'	250W	La Sierra University	MAS	MAS	SV-2-TB	-	-	-	-
6	16-2-129	17'	20'	-	-	Riverwalk Pkwy 11800	-	MAS	SV-1-T	SP-1-T	((C))	ø4	

((C)) OR ((P)) - INDICATES AUDITORY PEDESTRIAN SIGNAL TO BE INSTALLED: ((C)) INDICATES CUCKOO SOUND; ((P)) INDICATES PEEP-PEEP SOUND.



CONSTRUCTION NOTES (THIS SHEET):

- 1 - INSTALL MODEL 170 CONTROLLER ASSEMBLY WITH MODEL 332 CABINET. INSTALL 3M OPTICOM PHASE SELECTOR MODULE.
- 2 - INSTALL 3M OPTICOM DETECTOR MODEL 711 ON MAST ARM BY CLAMPING METHOD. EXACT LOCATION OF DETECTOR SHALL BE DETERMINED BY THE MANUFACTURER'S REPRESENTATIVE IN THE FIELD.
- 3 - INSTALL R9-3a AND R9-3b SIGN. (2 EA.)
- 4 - CONSTRUCT P.C.C. CURB RAMP PER CITY STD. DWG. NO. 304.
- 5 - REMOVE AND SALVAGE EXISTING ELECTROLIER. REMOVE FOUNDATION. INSTALL #5 PULL BOX.
- 6 - INSTALL 120V SIGNAL, 120V IISNS AND 240V STREET LIGHT SERVICE PER CITY STD. DWG. NO. 667.
- 7 - REMOVE EXISTING SIC AND INSTALL NEW SIC.
- 8 - INSTALL NEW AND EXISTING SIC AND CONNECT TO CONTROLLER ASSEMBLY.
- 9 - INSTALL SV-1-T SIGNAL HEAD AT 15' MOUNTING HEIGHT.

GENERAL NOTES:

- 1 DETECTOR LOOPS SHALL BE INSTALLED IN THE PRESENCE OF THE TRAFFIC ENGINEER OR HIS REPRESENTATIVE.
- 2 ALL SIGNING, STRIPING, AND PAVEMENT MARKINGS REQUIREMENTS SHALL BE COMPLETED AT LEAST ONE DAY PRIOR TO TURN-ON.
- 3 TYPICAL DETECTOR LOOP SPACING: 10', 15', 30' (WHERE APPLICABLE).
- 4 CONTRACTOR SHALL PERFORM ALL PERMANENT PAINTING (INSTALLATION AND REMOVALS) WORK.
- 5 ALL VEHICLE HEADS SHALL HAVE 12" LENSES WITH RED, YELLOW, AND GREEN 'LED' TYPE INDICATIONS.
- 6 PEDESTRIAN SIGNAL HEADS SHALL HAVE 'LED' TYPE INDICATIONS.
- 7 PEDESTRIAN PUSH BUTTONS SHALL BE ADA APPROVED TYPE.
- 8 OPTICOM PHASE SELECTORS SHALL BE 2 CHANNEL UNITS ONLY.
- 9 AUDIBLE PEDESTRIAN SIGNAL SHALL BE INTERNAL MOUNT ONLY.



CITY OF RIVERSIDE, CALIFORNIA DEPARTMENT OF PUBLIC WORKS				TRAFFIC SIGNAL PLAN RIVERWALK PARKWAY AND LA SIERRA UNIVERSITY ENTRANCE		ACCOUNT NO. X-273
APPROVED BY PRINCIPAL ENGINEER TRAFFIC DIVISION <i>Public Utilities</i>	DATE 11/18/05 11/14/05 11/8/05	BY <i>[Signature]</i>	APPROVED BY CITY ENGINEER DATE 11/18/05	HORIZ. SCALE: 1"=20' VERT. SCALE: 1"= -		
DESIGNED BY: JAT DRAWN BY: DMS CHECKED BY: JAT			SHEET 1 OF 1			



TRAFFIC No. 1575
 DATE: 12-16-04
 AGA Job No. : 134-011
 AGA File Name: LASURIVERWALK.DWG
 Print Date : 12/15/04
 Last Revision : 12/15/04



CONTRACT TE-04-06