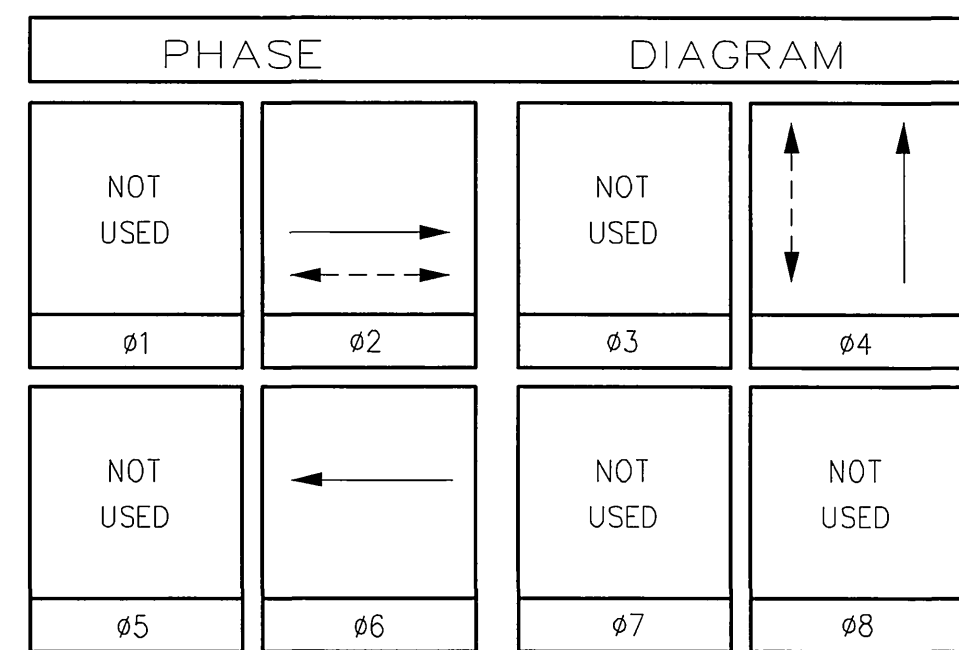
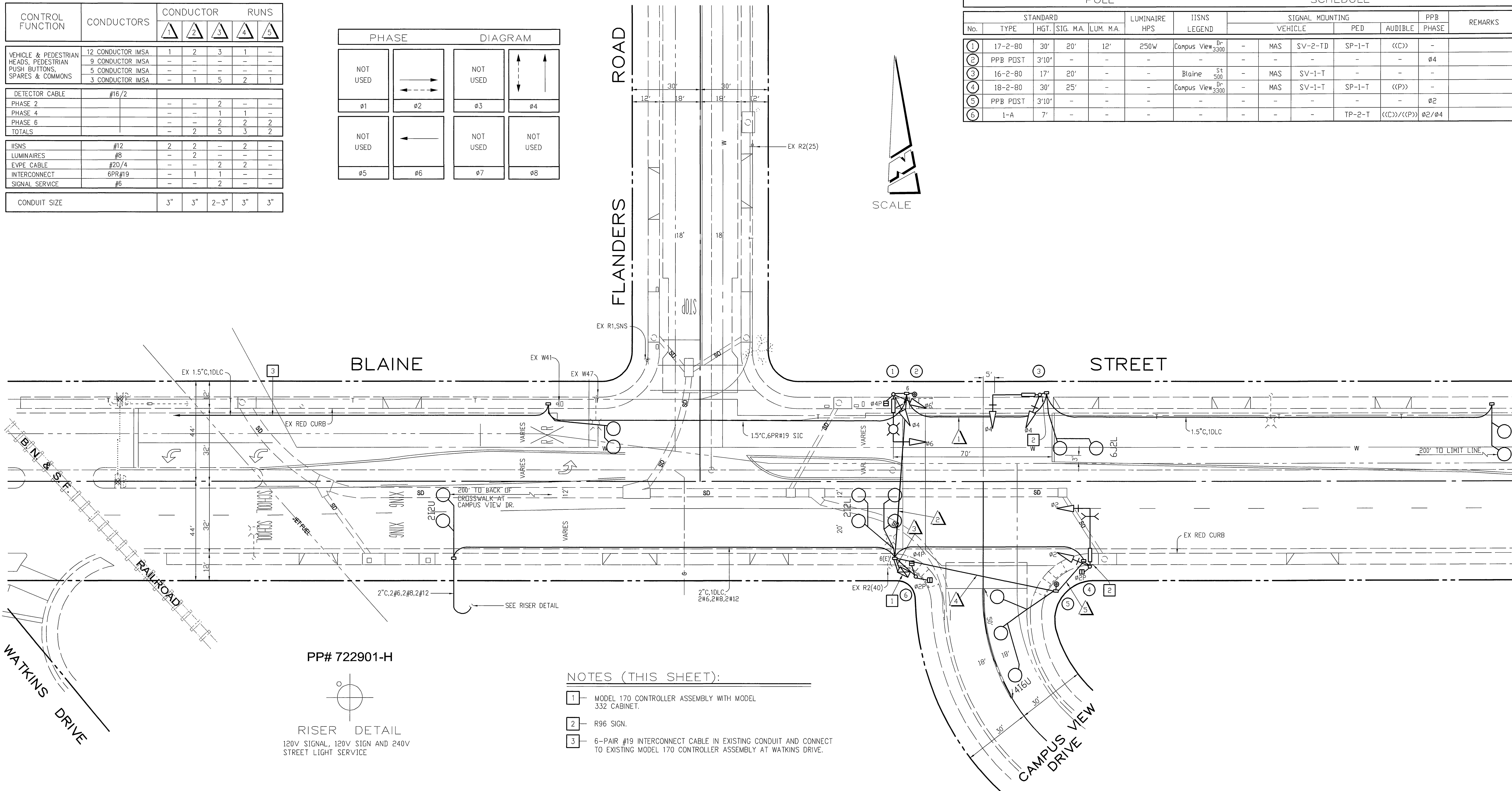


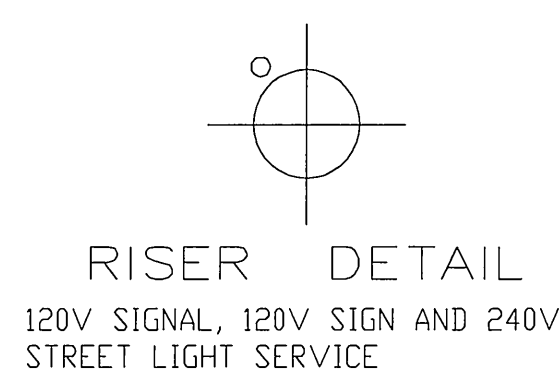
CONDUCTOR		TABLE				
CONTROL FUNCTION	CONDUCTORS	CONDUCTOR RUNS				
		1	2	3	4	5
VEHICLE & PEDESTRIAN HEADS, PEDESTRIAN PUSH BUTTONS, SPARES & COMMONS	12 CONDUCTOR IMSA	1	2	3	1	-
	9 CONDUCTOR IMSA	-	-	-	-	-
	5 CONDUCTOR IMSA	-	-	-	-	-
	3 CONDUCTOR IMSA	-	1	5	2	1
DETECTOR CABLE	#16/2	-	-	2	-	-
PHASE 2		-	-	1	1	-
PHASE 4		-	-	2	2	2
PHASE 6		-	-	2	2	2
TOTALS		-	2	5	3	2
IISNS	#12	2	2	-	2	-
LUMINAIRES	#8	-	2	-	-	-
EVPE CABLE	#20/4	-	-	2	2	-
INTERCONNECT	6PR#19	-	1	1	-	-
SIGNAL SERVICE	#6	-	-	2	-	-
CONDUIT SIZE		3"	3"	2-3"	3"	3"



POLE							SCHEDULE					
No.	TYPE	STANDARD			LUMINAIRE HPS	IISNS LEGEND	SIGNAL MOUNTING			PPB PHASE	REMARKS	
		HGT.	SIG. M.A.	LUM. M.A.			VEHICLE	PED	AUDIBLE			
1	17-2-80	30'	20'	12'	250W	Campus View ₃₃₀ ^{Dn}	-	MAS	SV-2-TD	SP-1-T	((C))	-
2	PPB PDST	3'10"	-	-	-	-	-	-	-	-	-	ø4
3	16-2-80	17'	20'	-	-	Blaine ₅₀₀ St	-	MAS	SV-1-T	-	-	-
4	18-2-80	30'	25'	-	-	Campus View ₃₃₀ ^{Dn}	-	MAS	SV-1-T	SP-1-T	((P))	-
5	PPB PDST	3'10"	-	-	-	-	-	-	-	-	-	ø2
6	1-A	7'	-	-	-	-	-	-	-	TP-2-T	((C))/((P))	ø2/ø4



PP# 722901-H



NOTES (THIS SHEET):

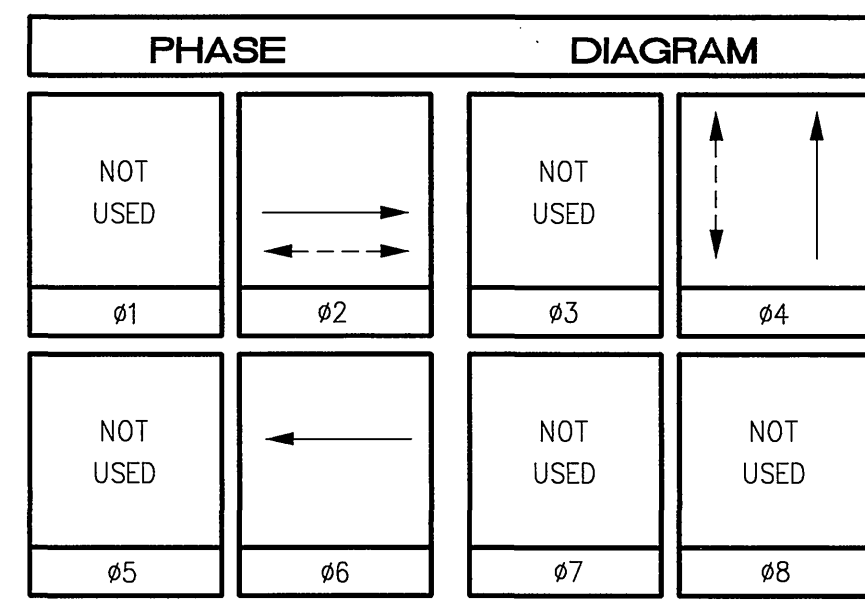
- 1 - MODEL 170 CONTROLLER ASSEMBLY WITH MODEL 332 CABINET.
- 2 - R96 SIGN.
- 3 - 6-PAIR #19 INTERCONNECT CABLE IN EXISTING CONDUIT AND CONNECT TO EXISTING MODEL 170 CONTROLLER ASSEMBLY AT WATKINS DRIVE.

CITY OF RIVERSIDE, CALIFORNIA DEPARTMENT OF PUBLIC WORKS				TRAFFIC SIGNAL BLAINE STREET AT CAMPUS VIEW DRIVE		ACCT. NO. X-275 SHEET 1 OF 1
APPROVED BY	BY	DATE	APPROVED BY	DATE		
PRINCIPAL ENGINEER			DIRECTOR OF PUBLIC WORKS			
AS-BUILT PER TE-01-02	MAC 11/02		P.W. INSPECTION			
MARK	REVISED	APPR. DATE	TRAFFIC DIVISION			
DESIGNED BY ACA	DRAWN BY ACA	CHECKED BY	CHIEF P.W. ENGR			
			PUBLIC UTILITIES			

SCALE: 1" = 20'

FILE NAME: X275AS.DWG

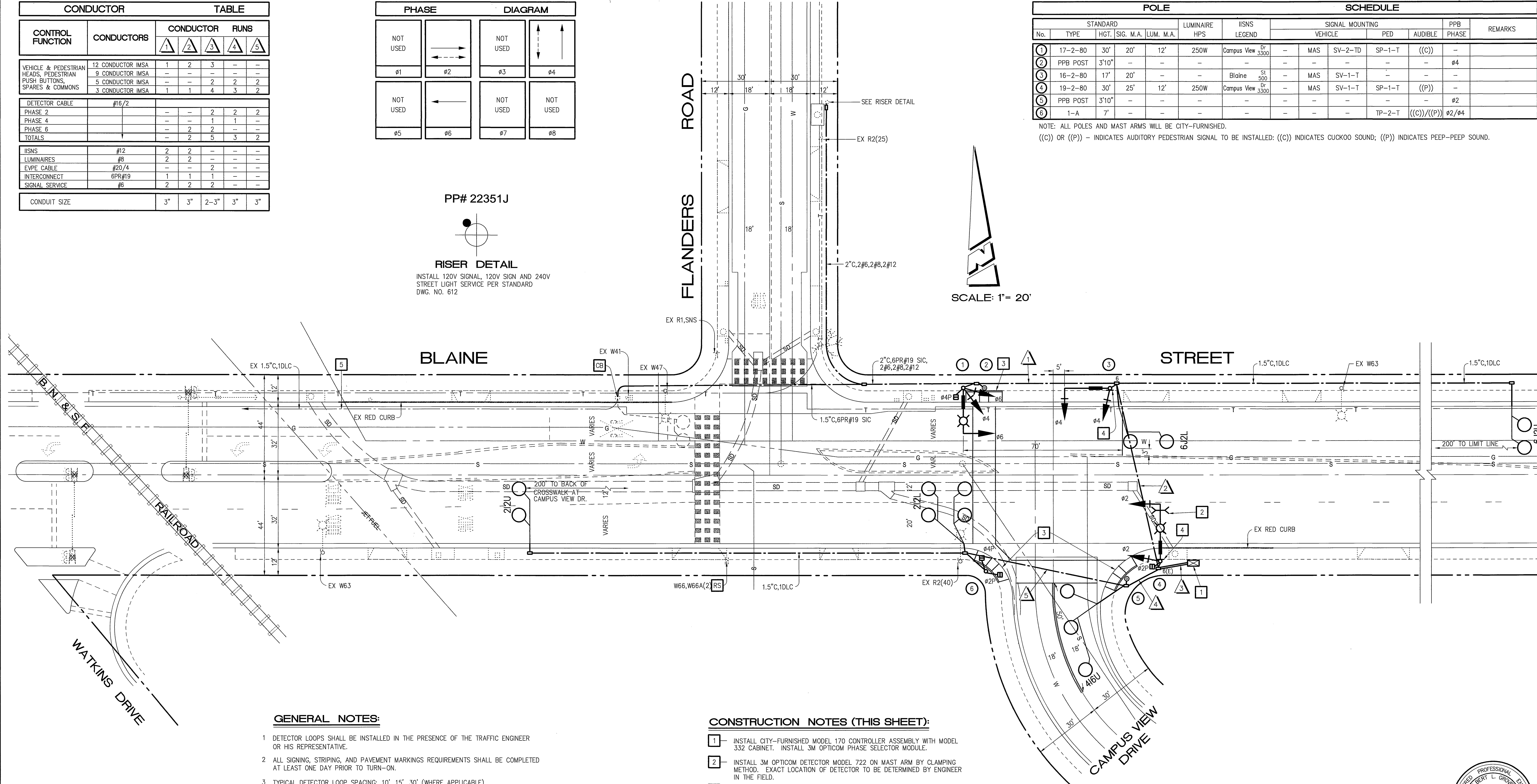
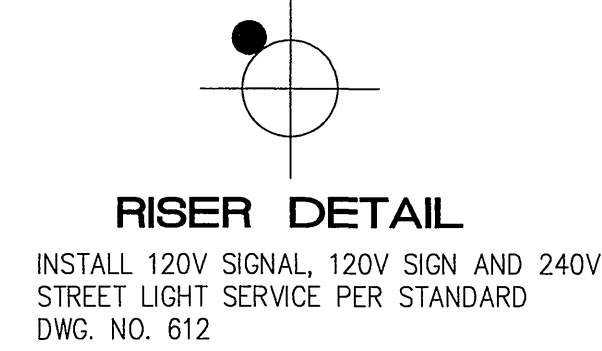
CONDUCTOR		TABLE				
CONTROL FUNCTION	CONDUCTORS	CONDUCTOR RUNS				
		1	2	3	4	5
VEHICLE & PEDESTRIAN HEADS, PEDESTRIAN PUSH BUTTONS, SPARES & COMMONS	12 CONDUCTOR IMSA	1	2	3	-	-
	9 CONDUCTOR IMSA	-	-	-	-	-
	5 CONDUCTOR IMSA	-	-	2	2	2
	3 CONDUCTOR IMSA	1	1	4	3	2
DETECTOR CABLE	#16/2	-	-	2	2	2
PHASE 2		-	-	1	1	-
PHASE 4		-	-	2	2	-
PHASE 6		-	-	3	3	-
TOTALS		2	2	5	3	2
ISNS	#12	2	2	-	-	-
LUMINAIRES	#8	2	2	-	-	-
EVPE CABLE	#20/4	-	-	2	-	-
INTERCONNECT	6PR#19	1	1	1	-	-
SIGNAL SERVICE	#6	2	2	2	-	-
CONDUIT SIZE		3"	3"	2-3"	3"	3"



POLE		SCHEDULE											
No.	TYPE	STANDARD				LUMINAIRE HPS	ISNS LEGEND	SIGNAL MOUNTING				PPB PHASE	REMARKS
		HGT.	SIG. M.A.	LUM. M.A.	VEHICLE			PED	AUDIBLE	PHASE			
1	17-2-80	30'	20'	12'	250W	Campus View Dr 3300	-	MAS	SV-2-TD	SP-1-T	((C))	-	
2	PPB POST	3'10"	-	-	-	-	-	-	-	-	-	Ø4	
3	16-2-80	17'	20'	-	-	Blaine St 500	-	MAS	SV-1-T	-	-	-	
4	19-2-80	30'	25'	12'	250W	Campus View Dr 3300	-	MAS	SV-1-T	SP-1-T	((P))	-	
5	PPB POST	3'10"	-	-	-	-	-	-	-	-	-	-	Ø2
6	1-A	7'	-	-	-	-	-	-	-	TP-2-T	((C))/((P))	Ø2/Ø4	

NOTE: ALL POLES AND MAST ARMS WILL BE CITY-FURNISHED.
 ((C)) OR ((P)) - INDICATES AUDITORY PEDESTRIAN SIGNAL TO BE INSTALLED: ((C)) INDICATES CUCKOO SOUND; ((P)) INDICATES PEEP-PEEP SOUND.

PP# 22351J



GENERAL NOTES:

- DETECTOR LOOPS SHALL BE INSTALLED IN THE PRESENCE OF THE TRAFFIC ENGINEER OR HIS REPRESENTATIVE.
- ALL SIGNING, STRIPING, AND PAVEMENT MARKINGS REQUIREMENTS SHALL BE COMPLETED AT LEAST ONE DAY PRIOR TO TURN-ON.
- TYPICAL DETECTOR LOOP SPACING: 10', 15', 30' (WHERE APPLICABLE).
- PAVEMENT DELINEATION SHOWN HEREON IS FOR REFERENCE ONLY. CITY FORCES SHALL PERFORM ALL PERMANENT PAINTING (INSTALLATION AND REMOVALS) WORK.
- ALL VEHICLE HEADS SHALL HAVE 12" LENSES WITH RED, YELLOW, AND GREEN 'LED' TYPE INDICATIONS.
- PEDESTRIAN SIGNAL HEADS SHALL HAVE 'LED' TYPE INDICATIONS.
- PEDESTRIAN PUSH BUTTONS SHALL BE ADA APPROVED TYPE.

CONSTRUCTION NOTES (THIS SHEET):

- INSTALL CITY-FURNISHED MODEL 170 CONTROLLER ASSEMBLY WITH MODEL 332 CABINET. INSTALL 3M OPTICOM PHASE SELECTOR MODULE.
- INSTALL 3M OPTICOM DETECTOR MODEL 722 ON MAST ARM BY CLAMPING METHOD. EXACT LOCATION OF DETECTOR TO BE DETERMINED BY ENGINEER IN THE FIELD.
- CONSTRUCT P.C.C. CURB RAMP PER CITY STD. (3 EA.)
- INSTALL R96 SIGN.
- INSTALL 6-PAIR #19 INTERCONNECT CABLE IN EXISTING CONDUIT AND CONNECT TO EXISTING MODEL 170 CONTROLLER ASSEMBLY AT WATKINS DRIVE.



CITY OF RIVERSIDE, CALIFORNIA DEPARTMENT OF PUBLIC WORKS		TRAFFIC SIGNAL PLAN		ACCOUNT NO.
APPROVED BY	DATE	BY	DATE	X-326
PRINCIPAL ENGINEER	8/14/01	R. Me. Smith	8-20-2001	
INSPECTION	8/14/01			SHEET -- OF --
TRAFFIC DIVISION	8/14/01			
CHIEF P. W. ENGINEER	8/14/01			
PUBLIC UTILITIES	8/20/01			

HORIZ. SCALE: 1" = 20' VERT. SCALE: 1" = -



TRAFFIC No. 0860
 DATE: 7-5-01
 AGA Job No. : 134-003
 AGA File Name : BLACAMSG
 Print Date : 6/27/01
 Last Revision : 6/27/01

