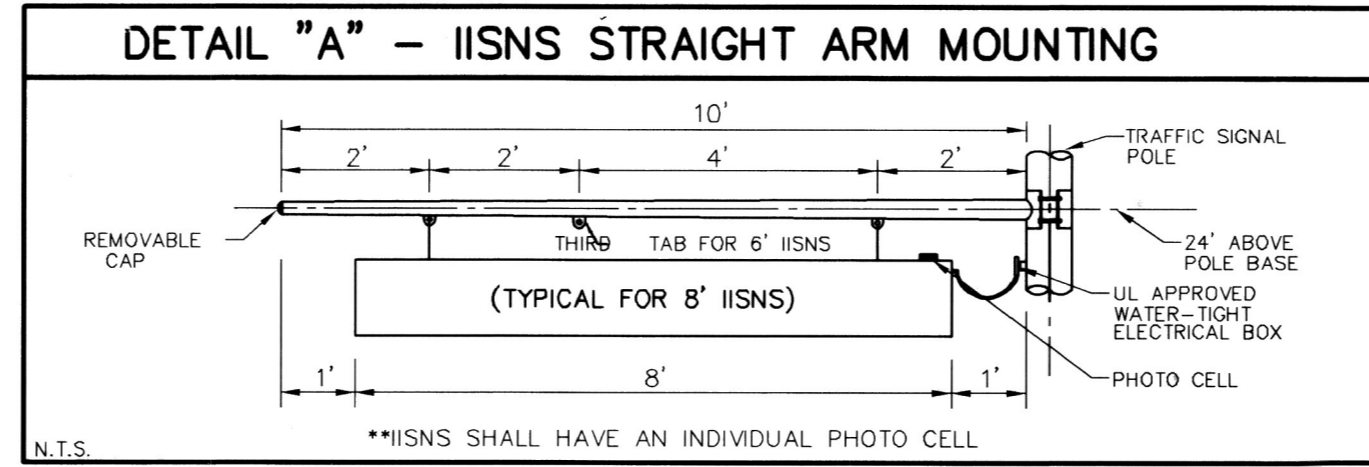


# EQUIPMENT SCHEDULE

NO.	SIGNAL STANDARD		LUMINAIRE		I.I.S.N.S.		SIGNAL MOUNTINGS			PPB PHASE
	TYPE	H'GHT	M.A.	L.A.	H.P.S.V.	LEGEND	VEHICLE	PEDESTRIAN	AUDIBLE	
(A)	TYPE 15 TS	30'		15	250W		SV-1-T			2
(B)	1A	10'					TV-1-T	SP-1-T	((C))	
(C)	26-4-100	30'	45'	15'	250W	Box Springs Blvd 6000	2-MAS	SV-2-TD	SP-1-T	((C))
(D)	19-4-100	30'	30'	15'	250W	Sycamore Cyn Blvd 6000	MAS	SV-2-TD	SP-2-T	((C))((P))
(E)	PED. POST	3'10"								8
(F)	26-4-100	30'	45'	15'	250W	Box Springs Blvd 6000	2-MAS	SV-1-T	SP-1-T	((C))
(G)	1A	10'					TV-1-T	SP-1-T	((P))	2

PEDESTRIAN AUDIBLES: (C)=CUCKOO (NORTH/SOUTH), (P)=PEEP PEEP (EAST/WEST)

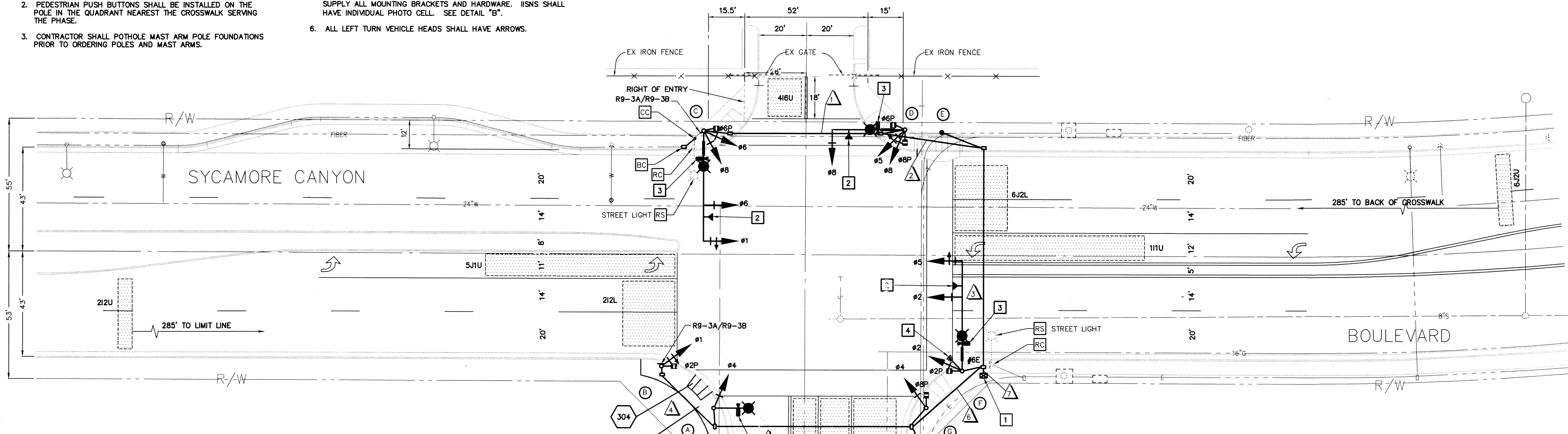
- ALL VEHICULAR HEADS SHALL HAVE 12" LENSES WITH LED INDICATIONS.
- PEDESTRIAN PUSH BUTTONS SHALL BE INSTALLED ON THE POLE IN THE QUADRANT NEAREST THE CROSSWALK SERVING THE PHASE.
- CONTRACTOR SHALL POTHOLE MAST ARM POLE FOUNDATIONS PRIOR TO ORDERING POLES AND MAST ARMS.
- ALL PEDESTRIAN HEADS SHALL BE LED COUNTDOWN HEADS.
- ALL IISNS SHALL BE SHAFT MOUNTED. CONTRACTOR SHALL SUPPLY ALL MOUNTING BRACKETS AND HARDWARE. IISNS SHALL HAVE INDIVIDUAL PHOTO CELL. SEE DETAIL "B".
- ALL LEFT TURN VEHICLE HEADS SHALL HAVE ARROWS.



# CONDUCTOR TABLE

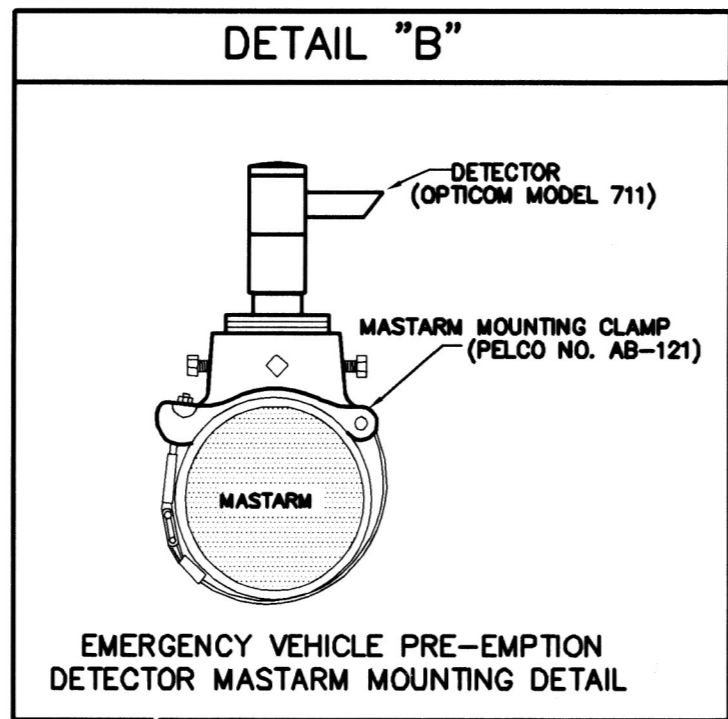
CONTROL FUNCTION	CONDUCTORS	CONDUCTOR RUNS						
		1	2	3	4	5	6	7
VEHICLE & PEDESTRIAN HEADS, PEDESTRIAN PUSH BUTTONS, SPARES & COMMONS	12 WIRE IMSA	2	3	3	1	2	3	7
	3 WIRE IMSA	1	2	3	-	1	2	6
CAMERA CABLE	COAXIAL	1	2	2	-	1	1	4
CAMERA POWER CABLE	POWER CABLE	1	2	2	-	1	1	4
VEHICLE PREEMPTION	#20/4	1	2	2	-	-	-	3
I.I.S.N.S.	#12	2	2	2	-	-	2	-
LUMINAIRES	#8	2	2	2	-	2	2	-
SIGNAL SERVICE	#6	-	-	-	-	-	2	2
* RADIO (SIC)	CAT-5E	-	-	-	-	-	-	1
CONDUIT SIZE		3"	3"	3"	3"	3"	3"	2-3"

\* RADIO EQUIPMENT MAY BE MOUNTED ON THE TRAFFIC SIGNAL POLE OR CONTROLLER CABINET. RADIO MANUFACTURER REPRESENTATIVE SHALL DETERMINE OPTIMAL PLACEMENT.



## CONSTRUCTION NOTES

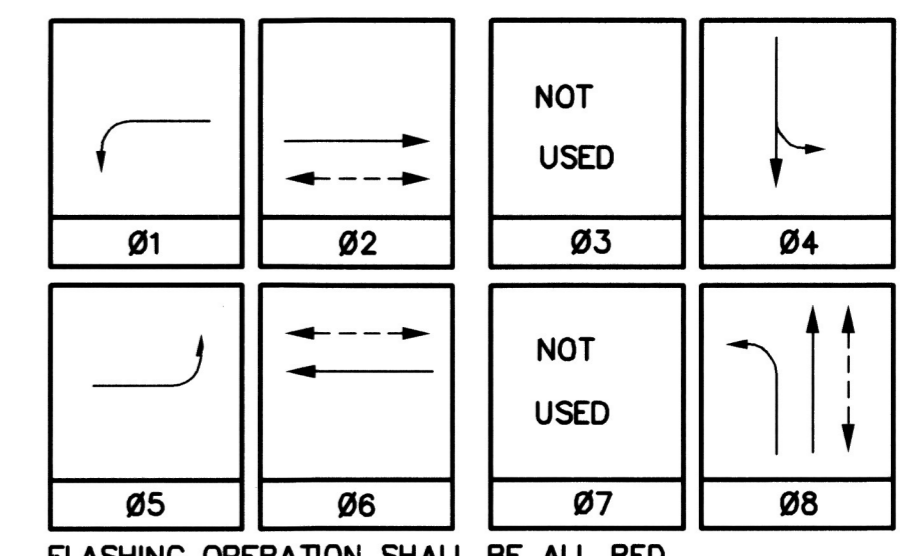
- INSTALL CONTROLLER ASSEMBLY AND CONTROLLER CABINET PER SPECIAL PROVISIONS. INSTALL OPTICOM PHASE SELECTOR MODULES. CONTRACTOR SHALL FURNISH AND INSTALL CLARY BATTERY BACK-UP SYSTEM MODEL SP1250PD-N PLUS. THE UNIT AND UPS BATTERIES SHALL BE HOUSED IN A CABINET, EXTERNALLY MOUNTED TO THE CONTROLLER CABINET.
- INSTALL OPTICOM DETECTOR MODEL 711 ON MAST ARM BY CLAMPING METHOD. EXACT LOCATION OF DETECTOR SHALL BE DETERMINED BY THE MANUFACTURER'S REPRESENTATIVE IN THE FIELD. SEE DETAIL "B".
- INSTALL VIDEO DETECTION CAMERA ON LUMINAIRE MAST ARM. CAMERAS SHALL BE PROGRAMMED BY THE MANUFACTURER'S REPRESENTATIVE. SEE SPECIAL PROVISIONS FOR SPECIFICATIONS.
- INSTALL SIGNAL INTERCONNECT RADIO SYSTEM PER SPECIAL PROVISIONS. EXACT PLACEMENT OF ANTENNA SHALL BE DETERMINED BY THE RADIO MANUFACTURER'S REPRESENTATIVE IN THE FIELD. THE CONTRACTOR SHALL INSTALL A LUMINAIRE PHOTO CELL POWER ADAPTER CABLE RATED SJT/SJO TO RADIO UNIT IF MOUNTED ON THE TRAFFIC SIGNAL POLE.
- 304 CONSTRUCT WHEELCHAIR RAMP PER CITY OF RIVERSIDE STANDARD DRAWING NO. 304.
- 325 CONSTRUCT P.C.C. SIDEWALK PER CITY OF RIVERSIDE STANDARD DRAWING NO. 325.



## GENERAL NOTES

- ALL SIGNING, STRIPING, AND PAVEMENT MARKING REQUIREMENTS SHALL BE COMPLETED AT LEAST ONE DAY PRIOR TO SIGNAL TURN-ON.
- ALL P.B. SHALL BE #6 WITH LIDS LABELED "TRAFFIC" UNLESS OTHERWISE NOTED.

## PHASE DIAGRAM



**IMPORTANT NOTICE**  
Section 4116/4117 of the Government Code requires a City Alert Identification Number to be used for your dig alert. Number call CALL TOLL FREE TWO WORKING DAYS BEFORE YOU DIG UNDERGROUND SERVICE ALERT 1-800-227-2600

**ENGINEER IN RESPONSIBLE CHARGE**  
GILBERT M. HERNANDEZ  
R.C.E. No. 69170 expires 6-30-08  
DATE: 3-27-08

Professional Engineer Seal: GILBERT M. HERNANDEZ, No. 69170, Exp. 06-30-08, STATE OF CALIFORNIA

DESIGNED BY: MAC DRAWN BY: MAC CHECKED BY: GMH

**CITY OF RIVERSIDE, CALIFORNIA**  
DEPARTMENT OF PUBLIC WORKS

APPROVED BY: [Signature] DATE: 4/21/08  
CITY ENGINEER

PRINCIPAL ENGINEER: [Signature] DATE: 4/16/08  
ENGINEERING MANAGER: [Signature] DATE: 4/16/08  
CONST. INSPECTION: [Signature] DATE: 4/16/08  
TRAFFIC DIVISION: [Signature] DATE: 4/16/08  
PUBLIC UTILITIES: [Signature] DATE: 4/16/08

**TRAFFIC SIGNAL**  
SYCAMORE CANYON BOULEVARD  
AT  
BOX SPRINGS BOULEVARD

SCALE: 1" = 20'

ACCT. NO. X-281  
SHEET 1 OF 1  
FILE NAME: X281.DWG