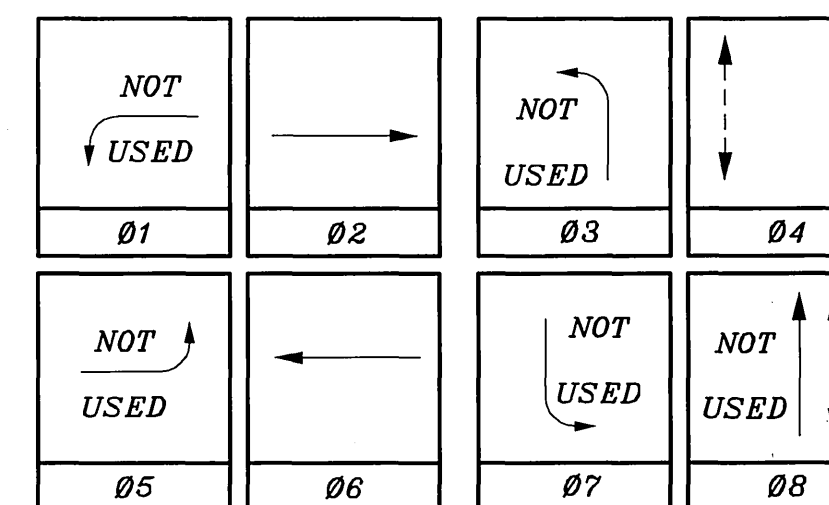


EQUIPMENT SCHEDULE

NO.	SIGNAL STANDARD		LUMINAIRE		I.I.S.N.S.		SIGNAL MOUNTINGS			PPB PHASE
	TYPE	H'GHT	M.A.	L.A.	H.P.S.V.	LEGEND	VEHICLE	PEDESTRIAN	AUDIBLE	
A	19-4-129	30'	25'				2-MAS			
							SV-1-T			
B	17-1-80	30'		12'	250W			SP-1-T	((P1))	4
C	18-4-129	17'	25'				MAS			
							SV-1-T			
D	1A	10'						SP-1-T	((P1))	4

- NOTES:**
1. ((C1)) OR ((P1)) - INDICATES AUDITORY PEDESTRIAN SIGNAL TO BE INSTALLED, ((C1)) INDICATES CUCKOO SOUND; ((P1)) INDICATES PEEP-PEEP SOUND.
 2. PEDESTRIAN PUSH BUTTONS SHALL BE INSTALLED ON THE POLE IN THE QUADRANT NEAREST THE CROSSWALK SERVING THE PHASE.
 3. TRAFFIC SIGNAL POLES AND ARMS ARE CITY FURNISHED. NEAREST THE CROSSWALK SERVING THE PHASE.
 4. CONTRACTOR SHALL FURNISH ALL OTHER EQUIPMENT AND APPURTENANCES.
 5. CONTRACTOR SHALL CONTACT SIGNAL MAINTENANCE FOR ANCHOR BOLT AND BASE INFORMATION.

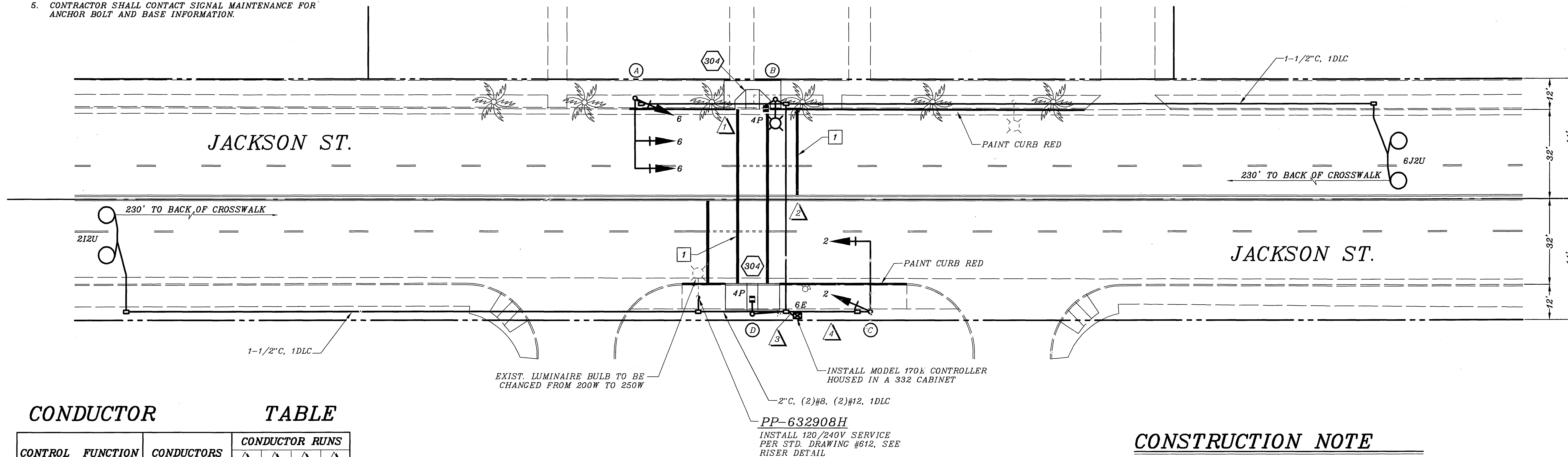
PHASE DIAGRAM



FLASHING OPERATION SHALL BE ALL RED.

PP-632908H

RISER DETAIL



CONDUCTOR TABLE

CONTROL FUNCTION	CONDUCTORS	CONDUCTOR RUNS			
		1	2	3	4
VEHICLE & PEDESTRIAN HEADS, PEDESTRIAN PUSH BUTTONS, SPARES & COMMONS	12 WIRE IMSA	1	2	4	1
	3 WIRE IMSA				
DETECTOR CABLE	#16/2			1	
PHASE 2				1	
PHASE 6			1	1	
I.I.S.N.S.	#12				
LUMINAIRES	#8				
SIGNAL SERVICE	#6				
INTERCONNECT	#19				
VEHICLE PRE-EMPTION	#20				
CONDUIT SIZE		2"	3"	2-3"	2"

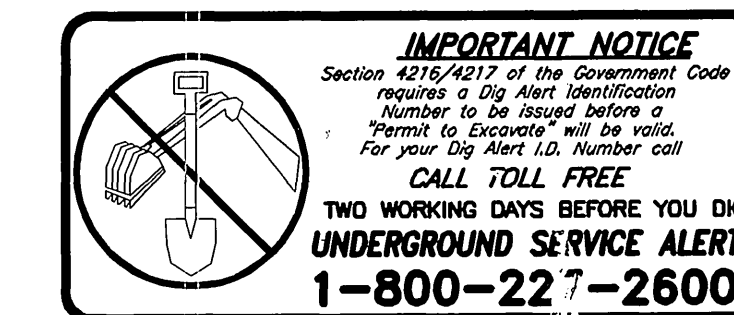
- NOTE:**
1. SIGNAL SYSTEM SHALL HAVE NEW CABLES AND CONDUCTORS.
 2. SEE SPECIAL PROVISIONS FOR ADDITIONAL INFORMATION ON I.M.S.A. CABLE.

CONSTRUCTION NOTE

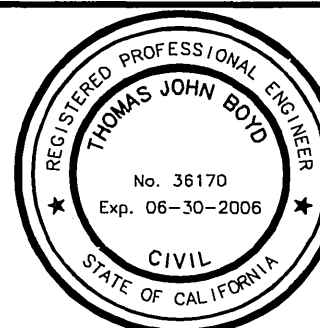
304 CONSTRUCT WHEELCHAIR RAMP PER CITY OF RIVERSIDE STANDARD DRAWING NO. 304.

PAVEMENT DELINEATION

- INDICATES PAVEMENT DELINEATION TO BE INSTALLED.
- INDICATES PAVEMENT DELINEATION TO REMAIN.
- INDICATES PAVEMENT DELINEATION TO BE REMOVED.
- 1 12" SOLID WHITE STRIPE (STD. PLAN A24E)



ENGINEER IN RESPONSIBLE CHARGE
 THOMAS JOHN BOYD
 R.C.E. No. 36170 expires
 DATE



MARK	REVISIONS	APPR.	DATE

CITY OF RIVERSIDE, CALIFORNIA
DEPARTMENT OF PUBLIC WORKS
 APPROVED BY: [Signature] DATE: 4/11/06
 TRAFFIC DIVISION: [Signature] DATE: 4/11/06

TRAFFIC SIGNAL
JACKSON STREET
AT
SENIOR APTS.

ACCT. NO. 959130214-41030200
X-283
 SHEET 1 OF 1
 FILE NAV: X283.DWG

SCALE: 1" = 20'