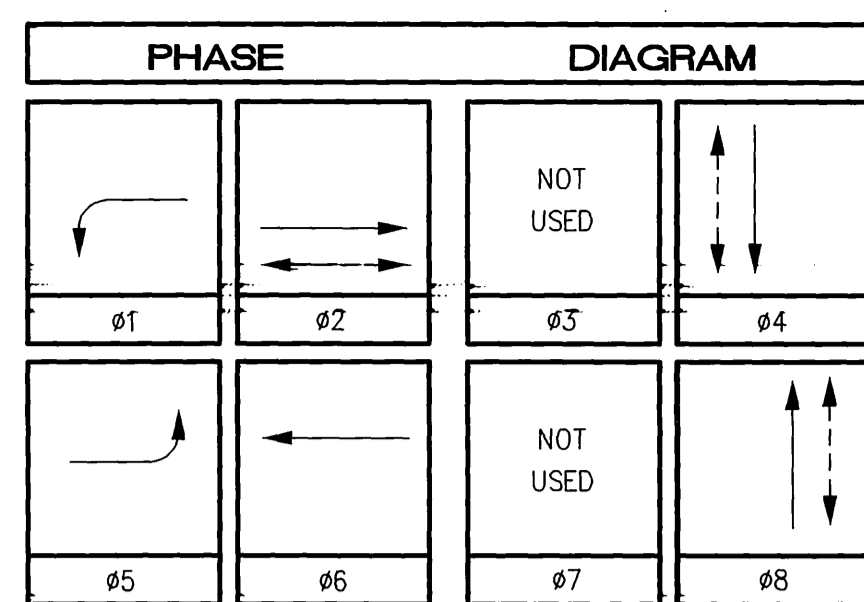
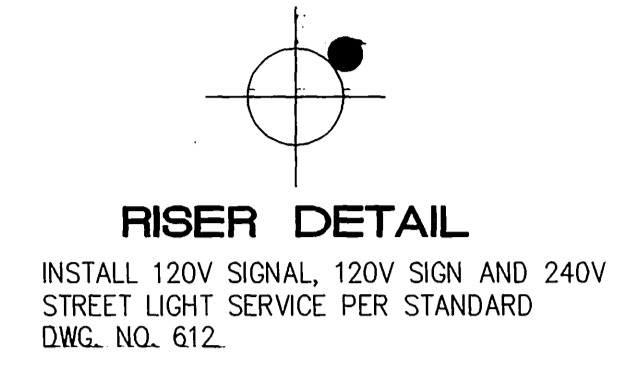


CONDUCTOR		TABLE							
CONTROL FUNCTION	CONDUCTORS	CONDUCTOR				RUNS			
		1	2	3	4	5	6	7	8
VEHICLE & PEDESTRIAN HEADS, PEDESTRIAN PUSH BUTTONS, SPARES & COMMONS	12 CONDUCTOR IMSA	1	2	3	4	8	3	2	1
	9 CONDUCTOR IMSA	-	-	-	-	-	-	-	-
	5 CONDUCTOR IMSA	-	-	-	-	-	-	-	-
	3 CONDUCTOR IMSA	1	1	1	2	6	3	2	1
DETECTOR CABLE	#16/2								
PHASE 1		1	1	1	1	1	-	-	-
PHASE 2		-	-	-	-	2	-	-	-
PHASE 4		-	-	1	1	1	-	-	-
PHASE 5		-	-	-	-	1	-	-	-
PHASE 6		2	2	2	2	2	-	-	-
PHASE 8		-	-	-	-	1	1	1	-
TOTALS		3	3	4	4	8	1	1	-
EVPE CABLE	#20/4	-	-	-	2	4	2	-	-
ISIS	#12	-	2	2	2	-	2	2	2
LUMINAIRES	#8	-	2	2	2	-	2	2	2
SIGNAL SERVICE	#5	-	-	-	-	2	2	2	2
CONDUIT SIZE		2"	3"	3"	3.5"	2-3.5"	3.5"	3"	2"

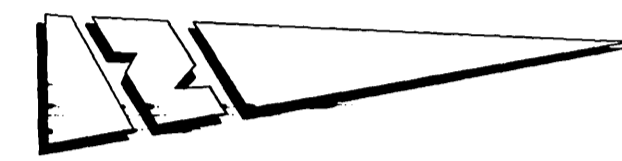


PP# 33504J

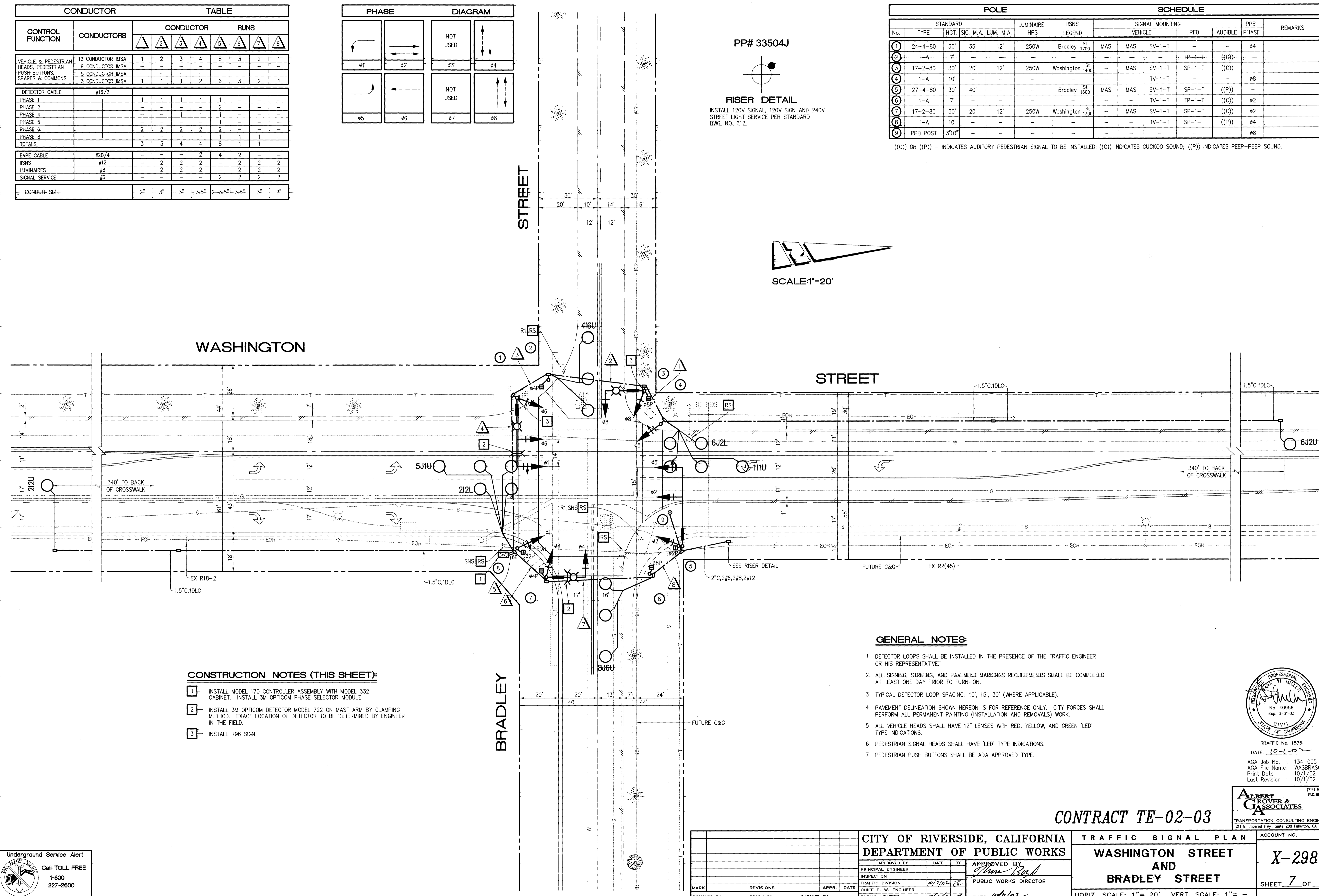


POLE		SCHEDULE											
No.	TYPE	STANDARD			LUMINAIRE HPS	ISIS LEGEND	SIGNAL MOUNTING				PPB PHASE	REMARKS	
		HGT.	SIG. M.A.	LUM. M.A.			VEHICLE	PED	AUDIBLE				
1	24-4-80	30'	35'	12'	250W	Bradley St 1700	MAS	MAS	SV-1-T	-	-	ø4	
2	1-A	7'	-	-	-	-	-	-	-	TP-1-T	((C))	-	
3	17-2-80	30'	20'	12'	250W	Washington St 1400	-	MAS	SV-1-T	SP-1-T	((C))	-	
4	1-A	10'	-	-	-	-	-	-	TV-1-T	-	-	ø8	
5	27-4-80	30'	40'	-	-	Bradley St 1600	MAS	MAS	SV-1-T	SP-1-T	((P))	-	
6	1-A	7'	-	-	-	-	-	-	TV-1-T	TP-1-T	((C))	ø2	
7	17-2-80	30'	20'	12'	250W	Washington St 1300	-	MAS	SV-1-T	SP-1-T	((C))	ø2	
8	1-A	10'	-	-	-	-	-	-	TV-1-T	SP-1-T	((P))	ø4	
9	PPB POST	3'10"	-	-	-	-	-	-	-	-	-	ø8	

((C)) OR ((P)) - INDICATES AUDITORY PEDESTRIAN SIGNAL TO BE INSTALLED; ((C)) INDICATES CUCKOO SOUND; ((P)) INDICATES PEEP-PEEP SOUND.



SCALE: 1"=20'



CONSTRUCTION NOTES (THIS SHEET):

- 1 - INSTALL MODEL 170 CONTROLLER ASSEMBLY WITH MODEL 332 CABINET. INSTALL 3M OPTICOM PHASE SELECTOR MODULE.
- 2 - INSTALL 3M OPTICOM DETECTOR MODEL 722 ON MAST ARM BY CLAMPING METHOD. EXACT LOCATION OF DETECTOR TO BE DETERMINED BY ENGINEER IN THE FIELD.
- 3 - INSTALL R96 SIGN.

GENERAL NOTES:

- 1 DETECTOR LOOPS SHALL BE INSTALLED IN THE PRESENCE OF THE TRAFFIC ENGINEER OR HIS REPRESENTATIVE.
- 2 ALL SIGNING, STRIPING, AND PAVEMENT MARKINGS REQUIREMENTS SHALL BE COMPLETED AT LEAST ONE DAY PRIOR TO TURN-ON.
- 3 TYPICAL DETECTOR LOOP SPACING: 10', 15', 30' (WHERE APPLICABLE).
- 4 PAVEMENT DELINEATION SHOWN HEREON IS FOR REFERENCE ONLY. CITY FORCES SHALL PERFORM ALL PERMANENT PAINTING (INSTALLATION AND REMOVALS) WORK.
- 5 ALL VEHICLE HEADS SHALL HAVE 12" LENSES WITH RED, YELLOW, AND GREEN 'LED' TYPE INDICATIONS.
- 6 PEDESTRIAN SIGNAL HEADS SHALL HAVE 'LED' TYPE INDICATIONS.
- 7 PEDESTRIAN PUSH BUTTONS SHALL BE ADA APPROVED TYPE.



TRAFFIC No. 1575
 DATE: 10-1-02
 AGA Job No. : 134-005
 AGA File Name: WASBRASG
 Print Date : 10/1/02
 Last Revision : 10/1/02

CONTRACT TE-02-03



**CITY OF RIVERSIDE, CALIFORNIA
 DEPARTMENT OF PUBLIC WORKS**

TRAFFIC SIGNAL PLAN

**WASHINGTON STREET
 AND
 BRADLEY STREET**

ACCOUNT NO.

X-298

SHEET 7 OF 9

DESIGNED BY	DRAWN BY	CHECKED BY

APPROVED BY	DATE	BY
PRINCIPAL ENGINEER		
INSPECTION		
TRAFFIC DIVISION	10/1/02	
CHIEF P. W. ENGINEER		
PUBLIC UTILITIES		

APPROVED BY	DATE
PUBLIC WORKS DIRECTOR	

HORIZ. SCALE: 1"= 20' VERT. SCALE: 1"= -