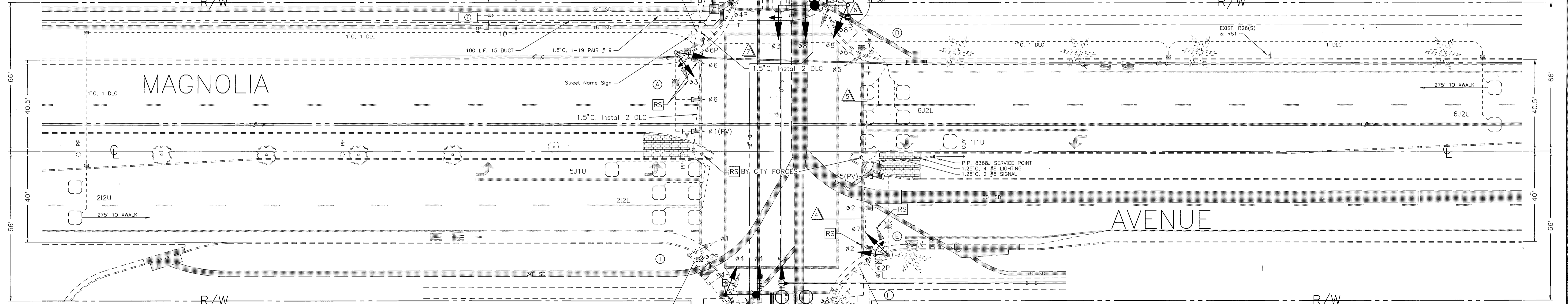


CONDUCTOR TABLE		CONDUCTOR RUNS									
CONTROL FUNCTION	CONDUCTORS	1	2	3	4	5	6	7	8	9	10
VEHICLE & PEDESTRIAN HEADS, PEDESTRIAN PUSH BUTTONS, SPARES & COMMONS	12 WIRE IMSA	1	1	2	2	1	3	4	4		
	9 WIRE IMSA	1	1	2	2	2	3	3	4		
	5 WIRE IMSA			1	1		1	2	2		
	3 WIRE IMSA	1	2	3	4	4	1	6	7	8	
DETECTOR CABLE #16/2											
PHASE 1						1		1	1	1	
PHASE 2								1	1	1	
PHASE 3				1	1	1		1	1	1	
PHASE 4											
PHASE 5											
PHASE 6							2	2	2		
PHASE 7											
PHASE 8				1	1	1		1	1	1	
TOTALS				2	2	3		5	6	6	
INTERCONNECT CABLE	19 PAIR #19										
LUMINAIRES #8			2	2	2	2	2	2			
SIGNAL SERVICE #6						2		2	2	2	
CONDUIT SIZE		1.5"	1.5"	1.5"	2"	2"	2"	2.5"	3"	2-2.5"	

NOTES:  
 SIGNAL SYSTEM SHALL HAVE NEW CABLES. DLC'S FOR ADVANCED DETECTORS MAY BE REUSED.  
 INTERCONNECT CABLE TO BE REUSED.

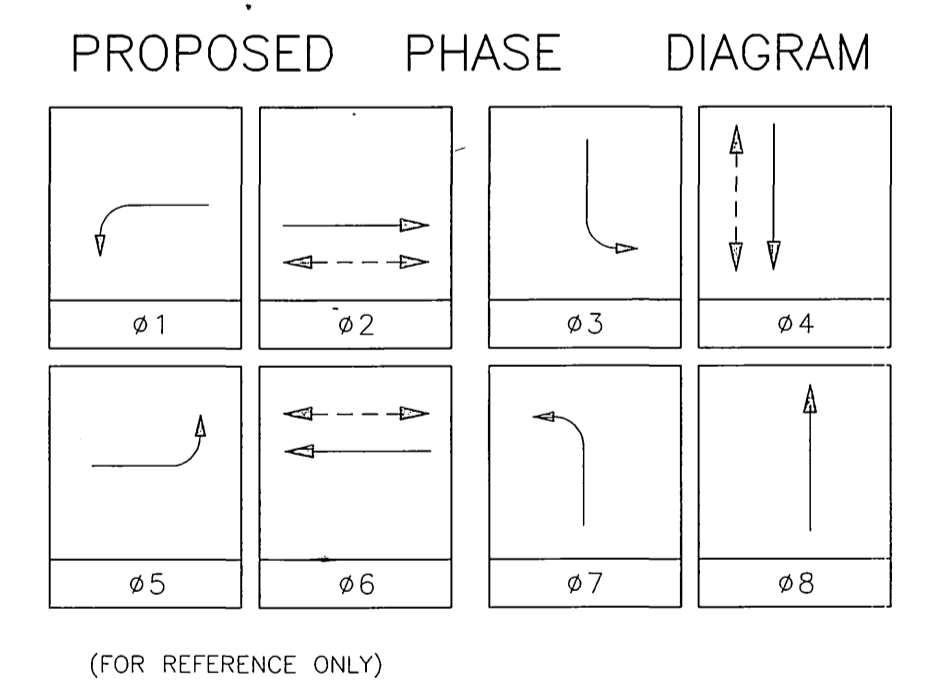
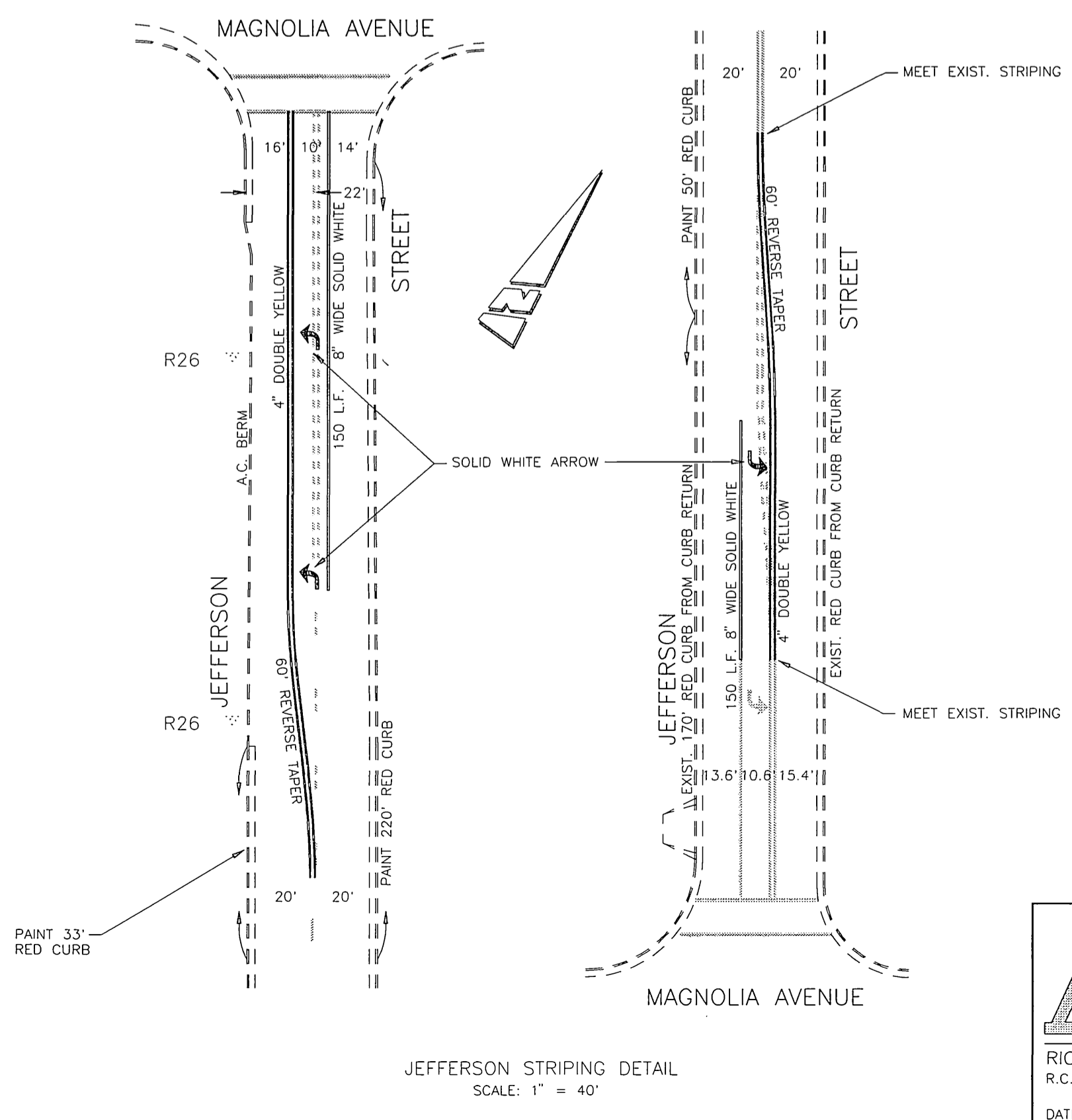
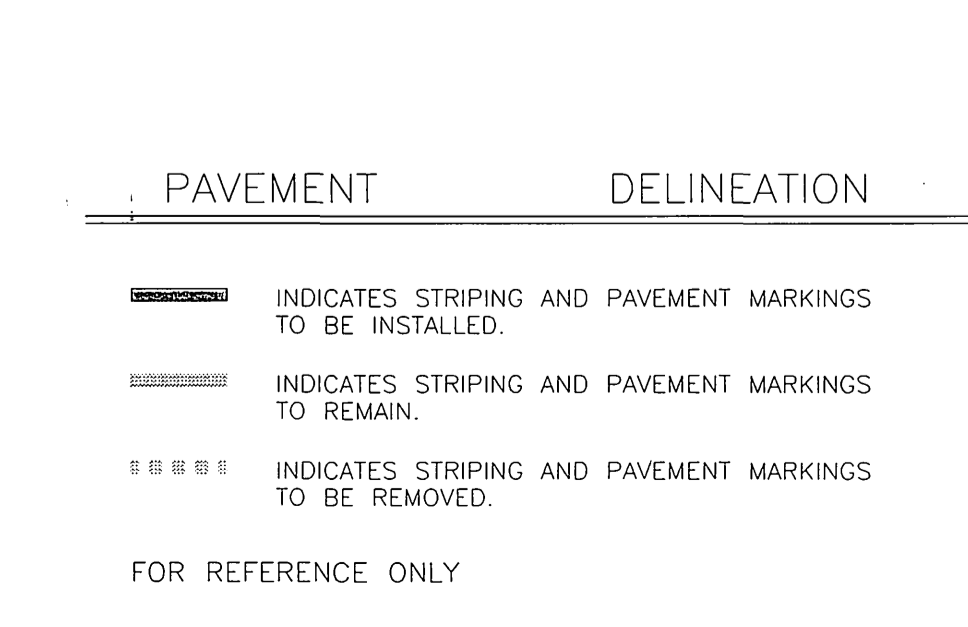
EQUIPMENT		SCHEDULE				REMARKS			
SIGNAL STANDARD NO.	TYPE	H'GHT	M.A.	LUMINAIRE M.A.	I.I.S.N.S. LEGEND		SIGNAL MOUNTINGS VEHICLE PEDESTRIAN AUDIBLE	PPB PHASE	
(A)	24-4-70(E)	30'	35'	12'	400W(E)	MAS(E) MAS(E) SV-2-TD(N)	SP-1-T(E)	ø4(E)	
(B)	1A(E)	10'				TV-1-T(E)	SP-1-T(E)	ø6(E)	
(C)	19-4-80(N)	30'	30'(N)	12'(N)	250W(R)	MAS(N) MAS(R) SV-1-T(R)	SP-1-T(R)	ø6(N)	RELOCATE ALL EQUIPMENT TO NEW POLE, EXCEPT PPB
(D)	1A(E)	10'				TV-1-T(E)	SP-1-T(E)	ø8(E)	
(E)	24-4-70(E)	30'	35'	12'	400W(E)	MAS(E) MAS(E) SV-2-TD(N)	SP-1-T(E)	ø8(E)	
(F)	PPB(E)							ø2(E)	
(G)	1A(E)	10'				TV-1-T(E)	SP-1-T(E)	ø4(E)	
(H)	19-4-80(N)	30'	25'(N)	12'(N)	250W(R)	MAS(N) MAS(R) SV-1-T(R)	SP-1-T(R)	ø2(N)	RELOCATE ALL EQUIPMENT TO NEW POLE, EXCEPT PPB
(I)	1A(E)	10'				TV-1-T(E)	SP-1-T(E)	ø4(E)	

NOTES:  
 1. NEW LEFT TURN HEADS SHALL HAVE ALL ARROWS.  
 2. NEW SIGNAL HEADS SHALL HAVE 12" LENSES.



CONSTRUCTION NOTES

- GENERAL NOTES
- DETECTOR LOOPS SHALL BE INSTALLED IN THE PRESENCE OF THE TRAFFIC ENGINEER OR HIS REPRESENTATIVE.
  - ALL SIGNING, STRIPING, AND PAVEMENT MARKING REQUIREMENTS SHALL BE COMPLETED AT LEAST ONE DAY PRIOR TO TURN-ON.
  - TYPICAL DETECTOR LOOP SPACING: 10', 15'.
  - PAVEMENT DELINEATION SHOWN HEREON IS FOR REFERENCE ONLY. CITY FORCES SHALL PERFORM ALL PAVEMENT DELINEATION REQUIREMENTS (INSTALLATION AND REMOVALS).



**IMPORTANT NOTICE**  
 Section 4216/4217 of the Government Code requires a Dig Alert Identification Number to be issued before a "Normal to Excavate" will be void. For your Dig Alert I.D. Number call CALL TOLL FREE 1-800-227-2600 TWO WORKING DAYS BEFORE YOU DIG UNDERGROUND SERVICE ALERT

ENGINEER IN RESPONSIBLE CHARGE  
 Richard D. McGrath  
 R.C.E. NO. 31952 EXPIRES 12-31-2000  
 DATE 5/29/97



MARK	REVISIONS	APP'D	DATE

CITY OF RIVERSIDE, CALIFORNIA  
 DEPARTMENT OF PUBLIC WORKS

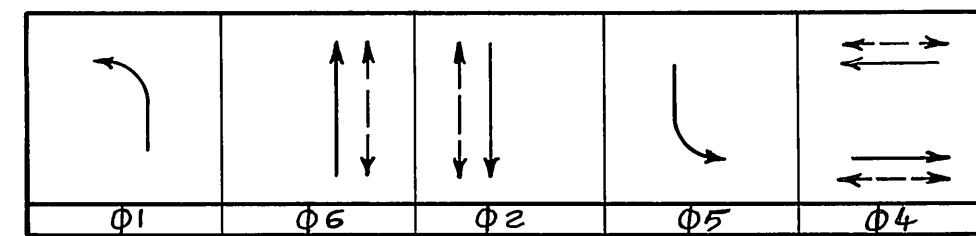
APPROVED BY: [Signature]  
 PRINCIPAL ENGINEER  
 P.W. INSPECTION  
 TRAFFIC DIVISION  
 CHIEF P.W. ENGR.  
 PUBLIC UTILITIES

TRAFFIC SIGNAL MODIFICATION  
 MAGNOLIA AVENUE AND JEFFERSON STREET

SCALE: 1" = 20'

ACCT. NO. 432-541600-440302-35051  
 X-302  
 SHEET 1 OF 1  
 FILE NAME: X302.DWG

**PROPOSED PHASE DIAGRAM**



SEQUENCE WITH CALLS ON ALL PHASES.  
FLASHING INDICATION: ALL RED.

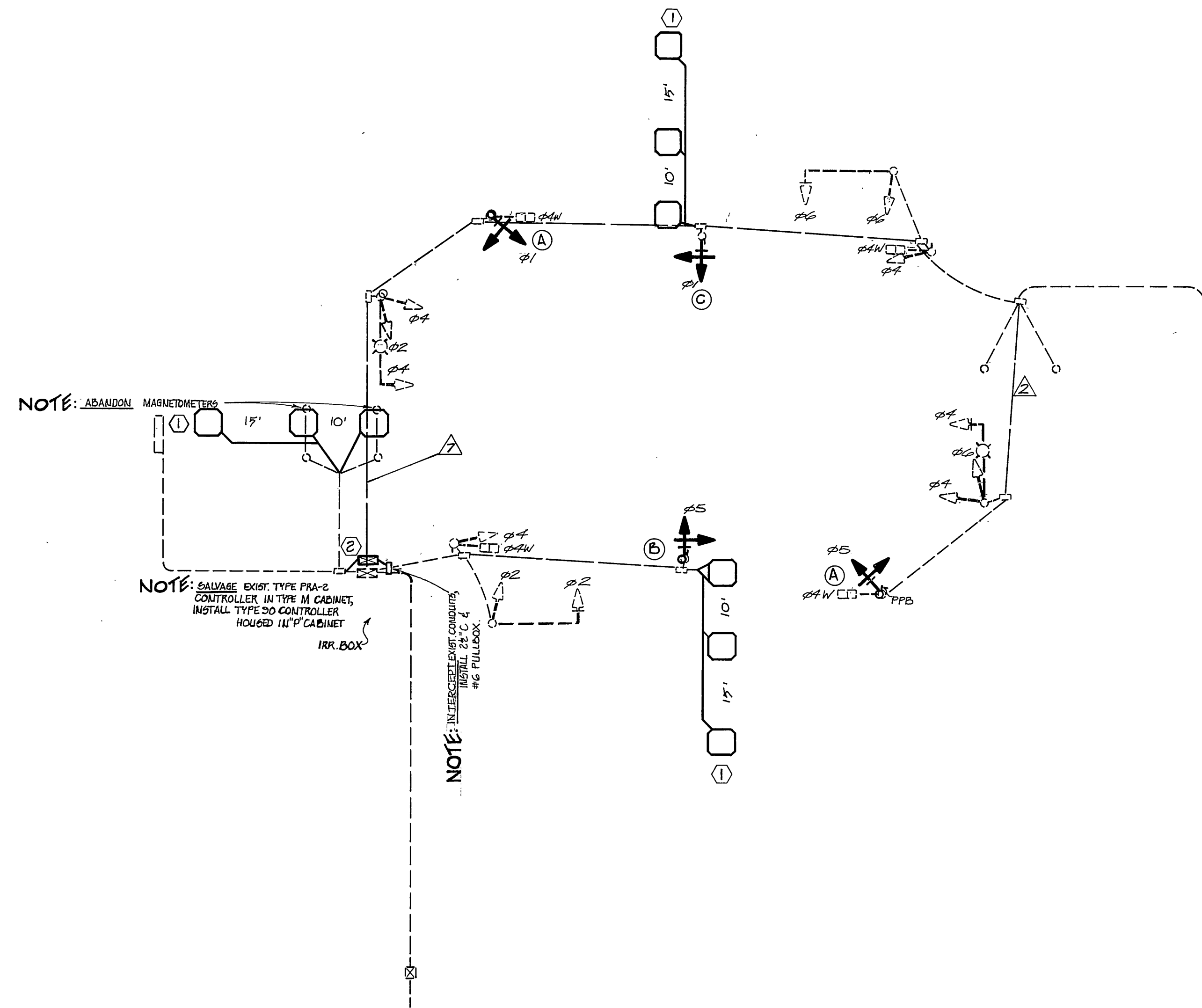
EXISTING

**GENERAL NOTES**

1. ALL DETECTOR LOOPS ARE 6'x6' WITH 3 TURNS, SPACING AS SHOWN ON PLAN.
2. DETECTOR LOOPS SHALL BE INSTALLED IN THE PRESENCE OF THE TRAFFIC ENGINEER OR HIS REPRESENTATIVE.
3. THIS PLAN ACCURATE FOR TRAFFIC SIGNAL WORK ONLY.
4. THE CONTROLLER, PULLBOX, DETECTOR LOOPS AND STANDARD WILL BE LOCATED IN THE FIELD BY THE TRAFFIC ENGINEER.
5. SPLICES ARE NOT ALLOWED (SEE CONDUCTOR SCHEDULE FOR ADDITIONS).

**DESCRIPTION OF WORK**

- ① INSTALL DETECTOR LOOPS AS SHOWN.
- ② SALVAGE EXISTING CONTROLLER AND CABINET; INSTALL NEW CONTROLLER AND CABINET AS SHOWN AND PERFORM NECESSARY CONDUIT AND CONDUCTOR WORK AS REQUIRED.
- ③ SALVAGE EXISTING 7' STANDARD AND INSTALL NEW 10' ALUMINUM TYPE IA STANDARD ON EXISTING FOUNDATION; RELOCATE PPB AND PED HEAD TO NEW STANDARD; INSTALL TV-1-T (R,V,12"GA) VEHICULAR INDICATION.
- ④ SALVAGE EXISTING 7' STANDARD AND INSTALL NEW 10' ALUMINUM TYPE IA STANDARD ON EXISTING FOUNDATION; RELOCATE PPB TO NEW STANDARD, AND INSTALL TV-1-T (R,V,12"GA) VEHICULAR INDICATION.
- ⑤ INSTALL TV-1-T (R,V,12"GA) VEHICULAR INDICATION ON EXISTING STANDARD.



Φ2Φ6, Φ1Φ5  
Φ4  
Φ2Φ6  
Φ4

2

Φ4W  
Φ4

Φ1Φ5  
Φ4

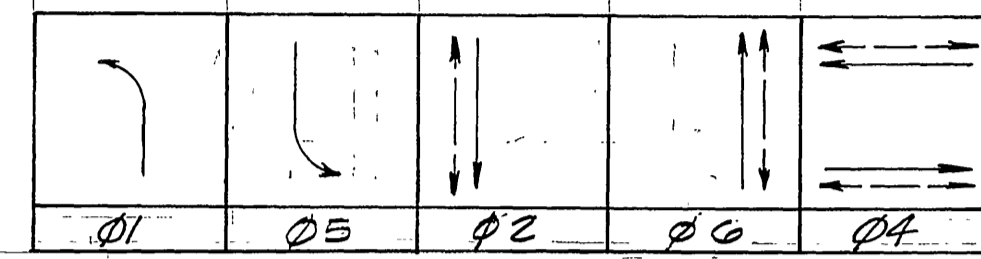
12/2 12/2 12/2 12/2 12/2

NOTE: 1. USE EXISTING CONDUCTORS FOR LEFT TURN VEHICULAR INDICATIONS IN MEDIUM.  
2. USE SPARES FOR FAR LEFT, LEFT-TURN VEHICULAR INDICATIONS.  
3. CONDUIT RUNS ① ② ③ ④ SHALL HAVE #12/2 DET. CABLE. ALSO REPLACE ABANDONED MAGNETOMETER CABLE WITH #12/2.

H.H. 5 0003 (718)

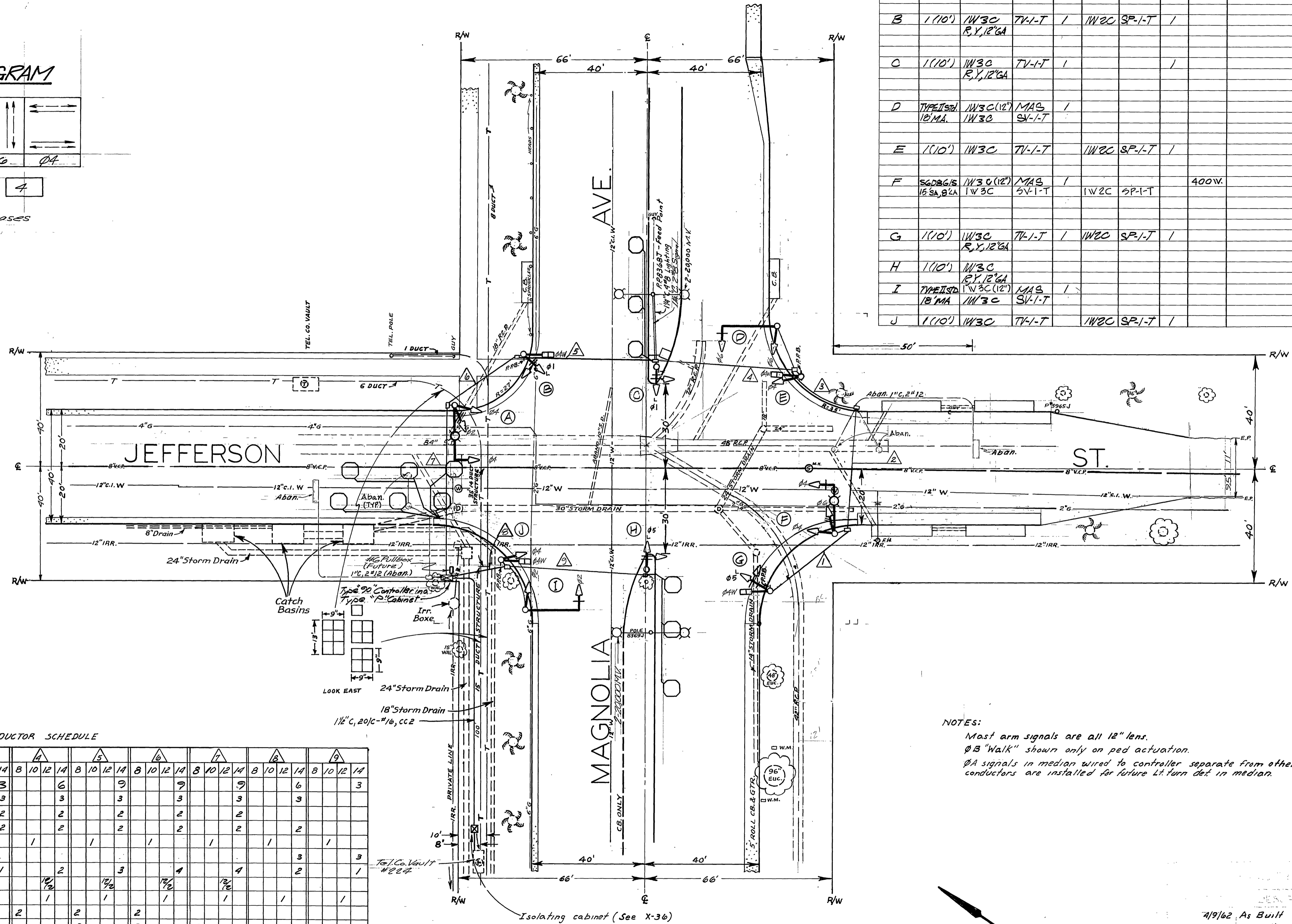
SMW  
WJW  
gms  
William D. Gardner  
9/25/79

**PHASE DIAGRAM**

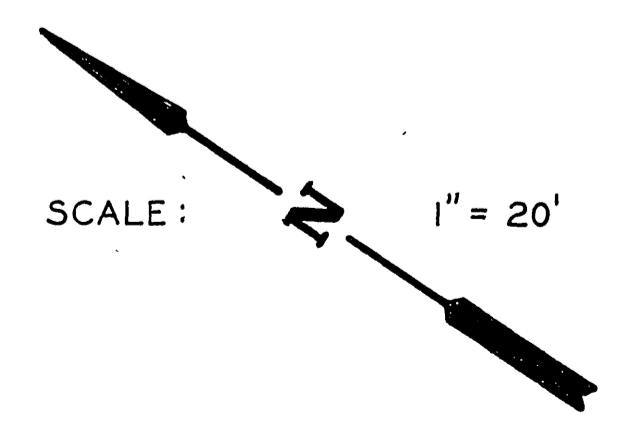


Sequence with calls on all phases  
Flashing Indication: All Red.

EQUIPMENT SCHEDULE									
Location	Standard	Vehicle Heads			Pedestrian Heads		Luminaire	Int. Illum. Street Name Sign	Remarks
		Head	Mounting	Back Refl.	Head	Mounting			
A	56 DBG/15 SA, 8 1/2 LA	1W3C (12')	MAS	1	1W2C	SP-1-T	400W.		
B	1 (10')	1W3C R,Y,12'GA	TV-1-T	1	1W2C	SP-1-T		ALUMINUM TYPE-1	
C	1 (10')	1W3C R,Y,12'GA	TV-1-T	1				ALUMINUM TYPE-1	
D	TYPE 1 SH 18 MA	1W3C (12') 1W3C	MAS SV-1-T	1					
E	1 (10')	1W3C	TV-1-T		1W2C	SP-1-T			
F	56 DBG/15 SA, 8 1/2 LA	1W3C (12') 1W3C	MAS SV-1-T	1	1W2C	SP-1-T	400W.		
G	1 (10')	1W3C R,Y,12'GA	TV-1-T	1	1W2C	SP-1-T		ALUMINUM TYPE-1	
H	1 (10')	1W3C R,Y,12'GA						ALUMINUM TYPE-1	
I	TYPE 1 SH 18 MA	1W3C (12') 1W3C	MAS SV-1-T	1					
J	1 (10')	1W3C	TV-1-T		1W2C	SP-1-T			



NOTES:  
Most arm signals are all 12" lens.  
ØB "Walk" shown only on ped actuation.  
ØA signals in median wired to controller separate from other ØA signals, conductors are installed for future Lt. turn det. in median.



CONDUCTOR SCHEDULE																		
CONDUCTOR RUN	A			B			C			D			E			F		
CONDUCTORS	8	10	14	8	10	14	8	10	14	8	10	14	8	10	14	8	10	14
Ø2#6, Ø1#5			3			3			3			3			3			3
Ø4						3			3			3			3			3
Ø2#5 Ped signals						2			2			2			2			2
ØB W-DW			2			2			2			2			2			2
110V. Neutral	1			1			1			1			1			1		
Spares																		
Ø4#1 P.P.B.			1			1			2			3			4			4
Ø4 Det.						1/2			1/2			1/2			1/2			1/2
12 V. Neutral	1			1			1			1			1			1		
Luminaires			2			2			2			2			2			2
Signal Service																		
1 Ø1#5 Lt. Turn Det.																		
TOTAL CONDUCTORS	1	1	6	2	1	11	2	1	11	2	1	15	4	1	3	4	1	3
CONDUIT SIZE	1 1/2"			1 1/2"			1 1/2"			2"			2"			1 1/2"		

TRAFFIC SIGNALS  
MAGNOLIA AVE. - JEFFERSON ST.

4/9/62 As Built  
1/24/72 As Built per Cont. 72-76-1  
6-18-72 Remove signals in JMW median  
2/10/81 As Built per H.S. Project No.

SCALE: 1" = 20'

ADD: [Signature]

4/10/62

X-302