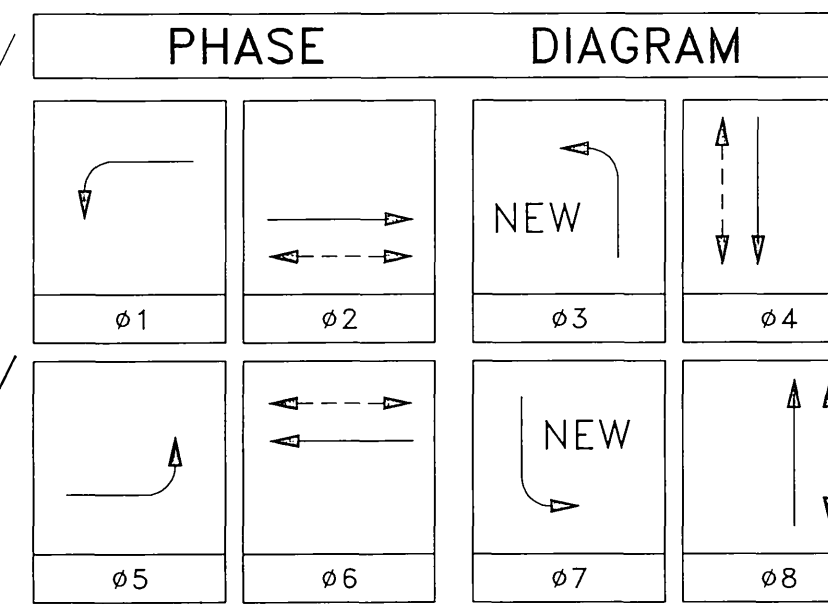


GENERAL NOTES

CONSTRUCTION NOTES

- DETECTOR LOOPS SHALL BE INSTALLED IN THE PRESENCE OF THE CITY TRAFFIC ENGINEER OR HIS REPRESENTATIVE.
- TYPICAL DETECTOR LOOP SPACINGS: 10' AND 15'.
- PAVEMENT DELINEATION SHOWN HEREON IS FOR REFERENCE ONLY.
- ALL SIGNING, STRIPING AND PAVEMENT MARKING REQUIREMENTS SHALL BE COMPLETED AT LEAST ONE DAY PRIOR TO TURN-ON.
- REFERENCE PLAN # R-3448 FOR STREET IMPROVEMENTS.
- REFERENCE PLAN # XL-410 FOR PAVEMENT DELINEATION.

- INSTALL TRAFFIC SIGNAL EMERGENCY PRE-EMPTION DETECTOR.
- REMOVE AND SALVAGE PED PUSH BUTTON POST.
- REMOVE AND SALVAGE 1-C STEEL POLE.
- REMOVE AND SALVAGE 45D MARBLELITE POLE.
- REMOVE PULLBOX.



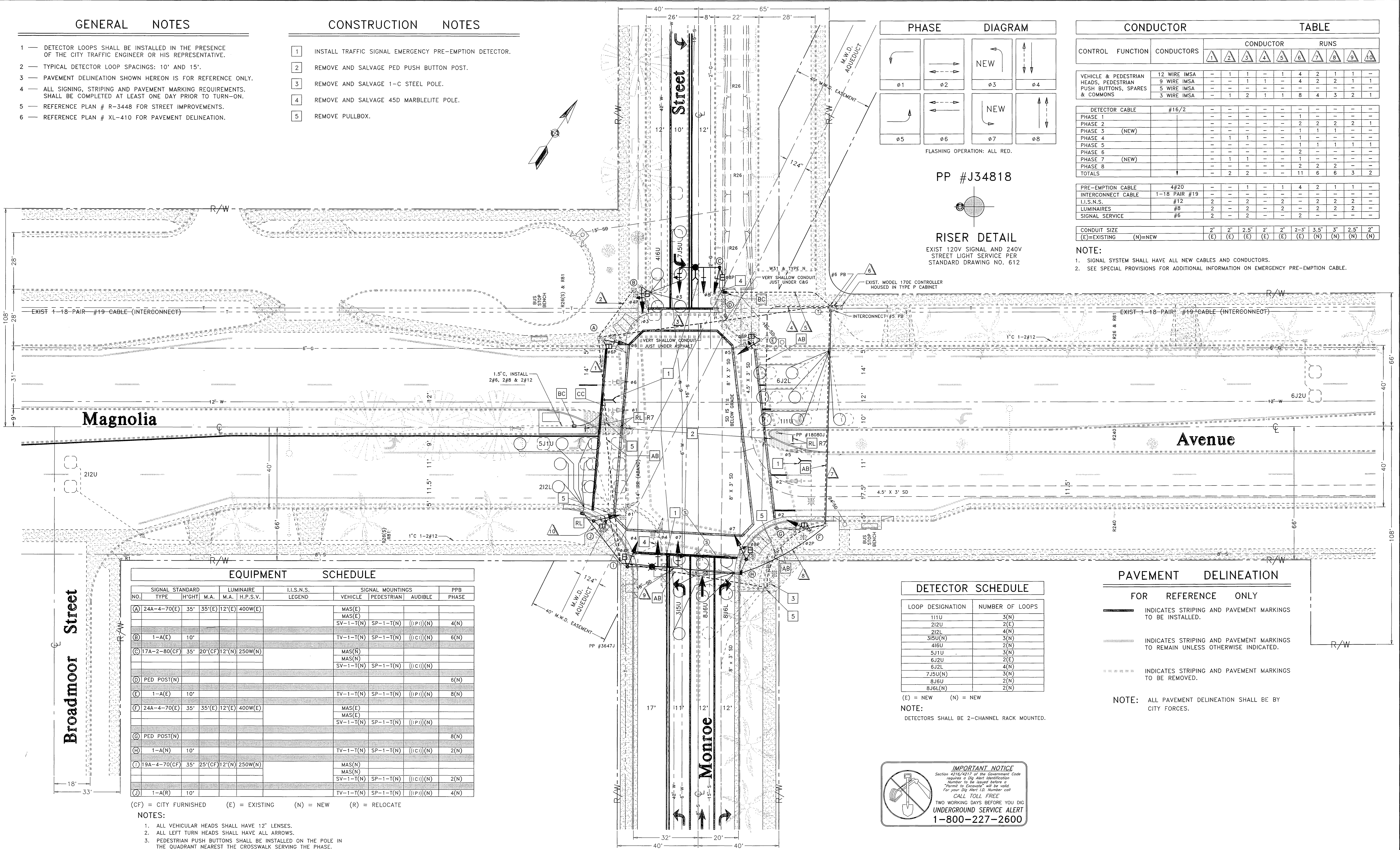
PP #J34818

RISER DETAIL

EXIST 120V SIGNAL AND 240V STREET LIGHT SERVICE PER STANDARD DRAWING NO. 612

CONDUCTOR		TABLE												
CONTROL FUNCTION	CONDUCTORS	CONDUCTOR RUNS												
		1	2	3	4	5	6	7	8	9	10			
VEHICLE & PEDESTRIAN HEADS, PEDESTRIAN PUSH BUTTONS, SPARES & COMMONS	12 WIRE IMSA	-	1	1	-	1	4	2	1	1	-	-	-	-
	9 WIRE IMSA	-	-	1	1	-	-	4	2	2	1	1	-	-
	5 WIRE IMSA	-	-	-	-	-	-	-	-	-	-	-	-	-
	3 WIRE IMSA	-	1	2	1	1	1	8	4	3	2	1	-	-
DETECTOR CABLE	#16/2	-	-	-	-	-	-	-	-	-	-	-	-	-
PHASE 1		-	-	-	-	-	-	1	-	-	-	-	-	-
PHASE 2		-	-	-	-	-	-	2	2	2	2	1	-	-
PHASE 3 (NEW)		-	-	-	-	-	-	1	1	1	-	-	-	-
PHASE 4		-	1	1	-	-	-	1	-	-	-	-	-	-
PHASE 5		-	-	-	-	-	-	2	-	-	1	1	1	-
PHASE 6		-	-	-	-	-	-	1	-	-	-	-	-	-
PHASE 7 (NEW)		-	1	1	-	-	-	1	-	-	-	-	-	-
PHASE 8		-	-	-	-	-	-	2	2	2	-	-	-	-
TOTALS		-	2	2	-	-	-	11	6	6	3	2	-	-
PRE-EMPTION CABLE	4#20	-	-	1	-	1	4	2	1	1	-	-	-	-
INTERCONNECT CABLE	1-18 PAIR #19	-	-	-	-	-	-	-	-	-	-	-	-	-
I.I.S.N.S.	#12	2	-	2	-	2	-	2	2	2	2	-	-	-
LUMINAIRES	#8	2	-	2	-	2	-	2	2	2	2	-	-	-
SIGNAL SERVICE	#6	2	-	2	-	-	-	2	-	-	-	-	-	-
CONDUIT SIZE		2"	2"	2.5"	2"	2"	2-3"	3.5"	3"	2.5"	2"	-	-	-
(E)=EXISTING (N)=NEW		(E)	(E)	(E)	(E)	(E)	(E)	(N)	(N)	(N)	(N)	-	-	-

- NOTE:
- SIGNAL SYSTEM SHALL HAVE ALL NEW CABLES AND CONDUCTORS.
 - SEE SPECIAL PROVISIONS FOR ADDITIONAL INFORMATION ON EMERGENCY PRE-EMPTION CABLE.



EQUIPMENT		SCHEDULE			
SIGNAL STANDARD NO.	TYPE	LUMINAIRE H'GHT M.A.	I.I.S.N.S. LEGEND	SIGNAL MOUNTINGS VEHICLE PEDESTRIAN AUDIBLE	PPB PHASE
(A)	24A-4-70(E)	35' 35'(E) 12'(E) 400W(E)		MAS(E) SV-1-T(N) SP-1-T(N) ((P)) (N)	4(N)
(B)	1-A(E)	10'		TV-1-T(N) SP-1-T(N) ((C)) (N)	6(N)
(C)	17A-2-80(CF)	35' 20'(CF) 12'(N) 250W(N)		MAS(N) MAS(N) SV-1-T(N) SP-1-T(N) ((C)) (N)	
(D)	PED POST(N)				6(N)
(E)	1-A(E)	10'		TV-1-T(N) SP-1-T(N) ((P)) (N)	8(N)
(F)	24A-4-70(E)	35' 35'(E) 12'(E) 400W(E)		MAS(E) MAS(E) SV-1-T(N) SP-1-T(N) ((P)) (N)	
(G)	PED POST(N)				8(N)
(H)	1-A(N)	10'		TV-1-T(N) SP-1-T(N) ((C)) (N)	2(N)
(I)	19A-4-70(CF)	35' 25'(CF) 12'(N) 250W(N)		MAS(N) MAS(N) SV-1-T(N) SP-1-T(N) ((C)) (N)	2(N)
(J)	1-A(R)	10'		TV-1-T(N) SP-1-T(N) ((P)) (N)	4(N)

(CF) = CITY FURNISHED (E) = EXISTING (N) = NEW (R) = RELOCATE

- NOTES:
- ALL VEHICULAR HEADS SHALL HAVE 12" LENSES.
 - ALL LEFT TURN HEADS SHALL HAVE ALL ARROWS.
 - PEDESTRIAN PUSH BUTTONS SHALL BE INSTALLED ON THE POLE IN THE QUADRANT NEAREST THE CROSSWALK SERVING THE PHASE.
 - TYPE 1-A STANDARDS SHALL BE ALUMINUM.
 - LUMINAIRES SHALL BE HIGH PRESSURE SODIUM VAPOR.
 - ((C)) OR ((P)) - INDICATES AUDITORY PEDESTRIAN SIGNAL TO BE INSTALLED. ((C)) INDICATES CUCKOO SOUND; ((P)) INDICATES PEEP-PEEP SOUND.
 - LOCATION OF THE EMERGENCY PRE-EMPTION DETECTOR SHALL BE AS DETERMINED IN THE FIELD BY THE MANUFACTURER'S REPRESENTATIVE.
 - EQUIPMENT NOT TO BE REUSED SHALL BE SALVAGE.
 - CONTRACTOR SHALL FURNISH ANCHOR BOLTS FOR NEW FOUNDATIONS.

DETECTOR SCHEDULE	
LOOP DESIGNATION	NUMBER OF LOOPS
111U	3(N)
212U	2(E)
212L	4(N)
315U(N)	3(N)
416U	2(N)
511U	3(N)
612U	2(E)
612L	4(N)
715U(N)	3(N)
816U	2(N)
816L(N)	2(N)

(E) = NEW (N) = NEW
NOTE: DETECTORS SHALL BE 2-CHANNEL RACK MOUNTED.

PAVEMENT DELINEATION

FOR REFERENCE ONLY

- INDICATES STRIPING AND PAVEMENT MARKINGS TO BE INSTALLED.
- INDICATES STRIPING AND PAVEMENT MARKINGS TO REMAIN UNLESS OTHERWISE INDICATED.
- INDICATES STRIPING AND PAVEMENT MARKINGS TO BE REMOVED.

NOTE: ALL PAVEMENT DELINEATION SHALL BE BY CITY FORCES.

IMPORTANT NOTICE
Section 4216/4217 of the Government Code requires a Dig Alert Identification Number to be issued before a "Permit to Excavate" will be valid. For your Dig Alert ID, Number call CALL TOLL FREE TWO WORKING DAYS BEFORE YOU DIG UNDERGROUND SERVICE ALERT 1-800-227-2600

ENGINEER IN RESPONSIBLE CHARGE
RICHARD D. McGRATH
R.C.E. NO. 31952 EXPIRES 12-31-2000
DATE 9/22/97

REGISTERED PROFESSIONAL ENGINEER
RICHARD D. McGRATH
No. 31952 Exp. 12-31-2000
CIVIL
STATE OF CALIFORNIA

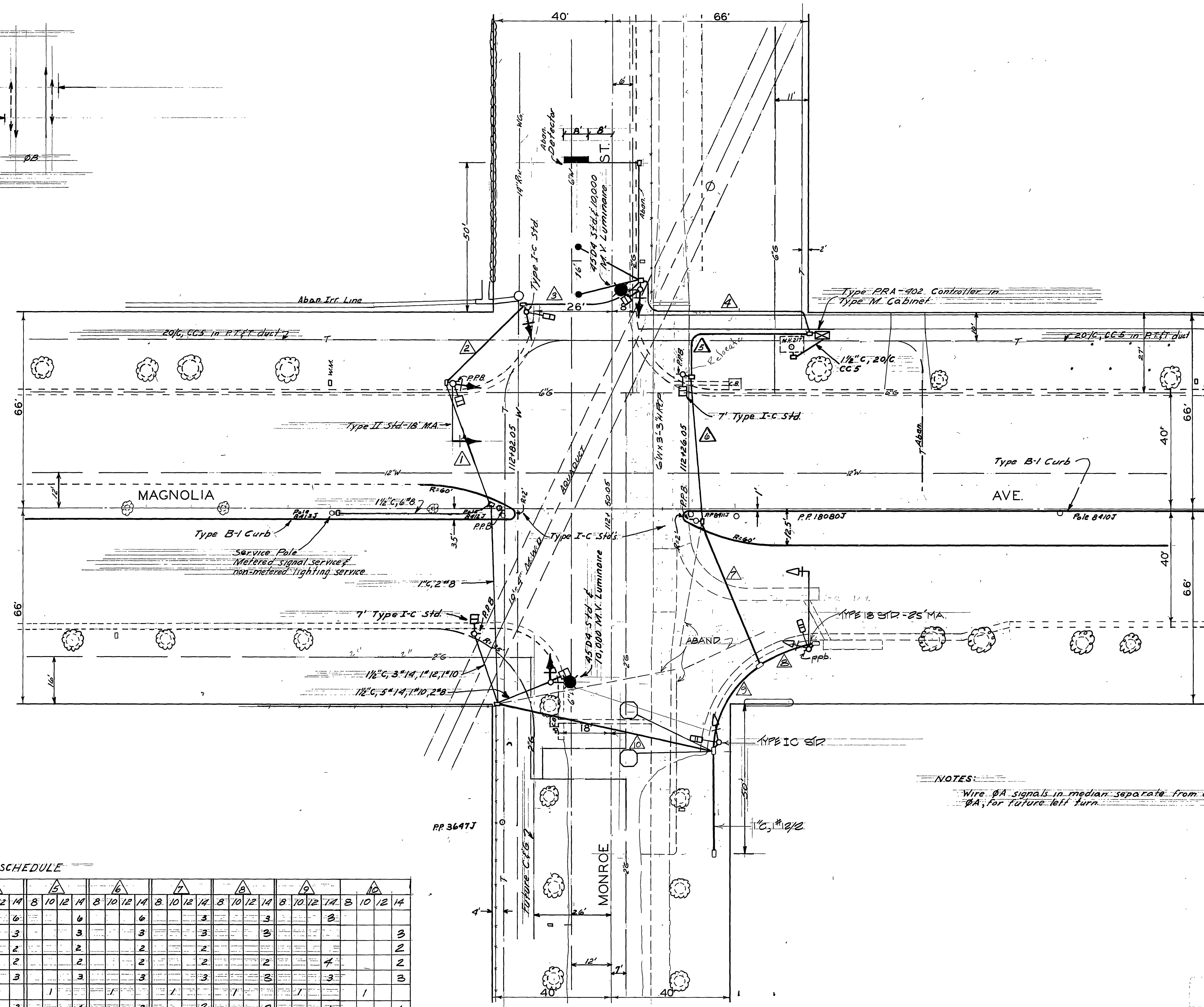
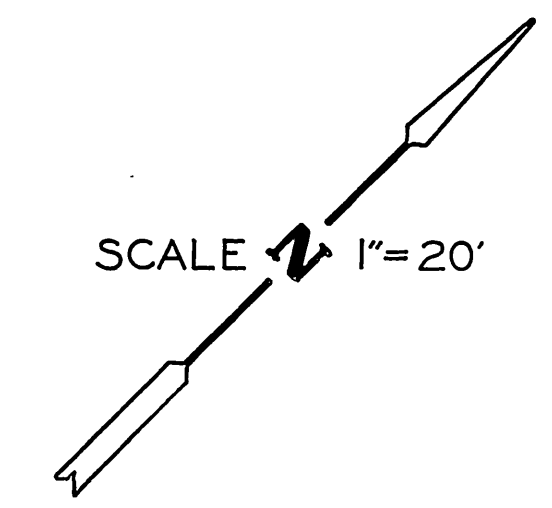
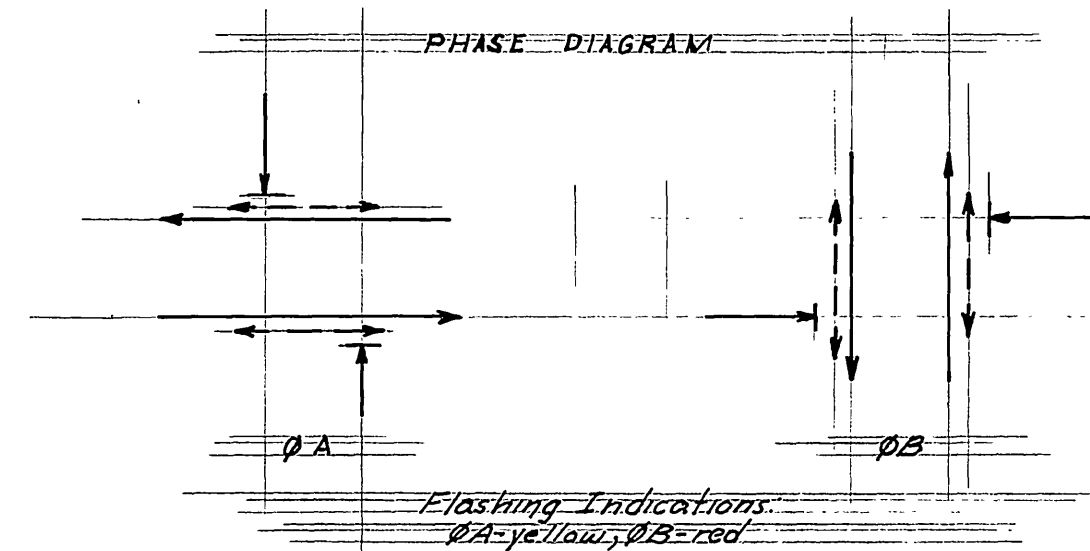
MARK REVISIONS APPR. DATE
DESIGNED BY DRAWN BY CHECKED BY

CITY OF RIVERSIDE, CALIFORNIA
DEPARTMENT OF PUBLIC WORKS
APPROVED BY DATE
PRINCIPAL ENGINEER
P.W. INSPECTION
TRAFFIC DIVISION
CHIEF P.W. ENGR.
PUBLIC UTILITIES

TRAFFIC SIGNAL REVISION
MAGNOLIA AVENUE AND MONROE STREET
SCALE: 1" = 20'

ACCT. NO. 0432-541600-440302-35087
X-304A
SHEET 1 OF 1
FILE NAME: X304A.DWG

INDEXED 9-29-97



NOTES:
 Wire ØA signals in median separate from other ØA; for future left turn.

CONDUCTOR SCHEDULE

CONDUCTOR RUN	A			B			C			D			E			F			G			H			I			J												
CONDUCTORS	8	10	12	14	8	10	12	14	8	10	12	14	8	10	12	14	8	10	12	14	8	10	12	14	8	10	12	14	8	10	12	14	8	10	12	14	8	10	12	14
ØA																																								
ØB																																								
ØA W-DW																																								
ØB W-DW																																								
Spares																																								
120 V Neutral	1				1				1				1				1				1				1				1				1				1			
ØB PPB																																								
ØB Def.																																								
12 V Neutral																																								
Signal Service	2				2				2				2				2				2				2				2				2				2			
Luminaires	2				2				2				2				2				2				2				2				2				2			
Future ØA Def.																																								
ØB Magnetometer Def.																																								
TOTAL CONDUCTORS	4	1	2	7	4	1	2	13	4	1	2	13	2	1	3	18	1	3	20	1	3	19	1	2	16	1	2	13	1	1	11	1	2	11	1	2	11			
CONDUIT SIZE	2"			2"			2 1/2"			2"			2"			1 1/2"			1 1/2"			2"			1 1/2"			1 1/2"			2"			2"						

Indicates one 4 conductor cable; r indicates two 4 conductor cable.

2/13/63 As Built
 1/24/72 As Built per Cont. 72-761
 6/20/72 removed medians JMW
 indications
 2/27/80 AS-BUILT FOR S.W. CORNER
 BIRMINGHAM PROJECT, MAZ

TRAFFIC SIGNALS
 MAGNOLIA AVE.
 &
 MONROE ST.

A.D.R.
 A.D.D.

X-304