

**CONDUCTOR TABLE**

CONTROL FUNCTION	CONDUCTORS	CONDUCTOR RUNS													
		1	2	3	4	4a	5	5a	6	7	8	9	10	11	12
VEHICLE & PEDESTRIAN HEADS, PEDESTRIAN PUSH BUTTONS, SPARES & COMMONS	12 WIRE IMSA	1	2	3	4	4			8	8	1	2	2	1	
	9 WIRE IMSA														
	5 WIRE IMSA														
	3 WIRE IMSA	1	2	4	4	5			10	10	1	2	2	1	
DETECTOR CABLE	#16/2														
PHASE 1									1	1		1	1	1	1
PHASE 2					2				2	2	2				
PHASE 2 BIKE (FUT.)					1				1	1					
PHASE 3			1	1	1				1	1					
PHASE 4									2	2	2				
PHASE 5						1			1	1					
PHASE 6									2	2		2			
PHASE 6 BIKE (FUT.)									1	1		1			
PHASE 7									1	1	1				
PHASE 8				2	2				2	2					
INTERCONNECT	#20								1						
I.I.S.N.S.	#12														
LUMINAIRES	#8	2	2	2	2	2	2	2				2	2	2	
SIGNAL SERVICE	#6	2	2	2	2	2	2	2				2	2	2	
CONDUIT SIZE		2"	2"	2"	2.5"	2"	2.5"	2"	2-3"	2-3"	2"	2.5"	2"	2"	1.5"
		(N)	(E)	(E)	(E)	(E)	(E)	(E)	(E)	(E)	(E)	(E)	(E)	(E)	(E)

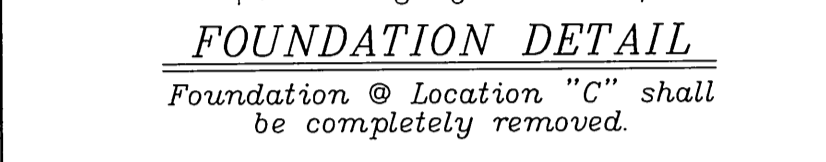
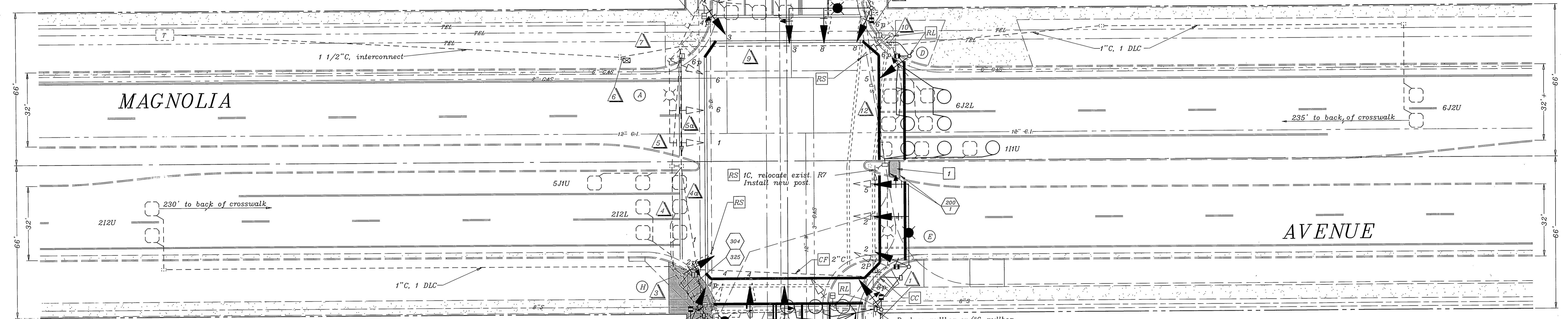
NOTE: Existing cables and conductors shall be reused.

**EQUIPMENT SCHEDULE**

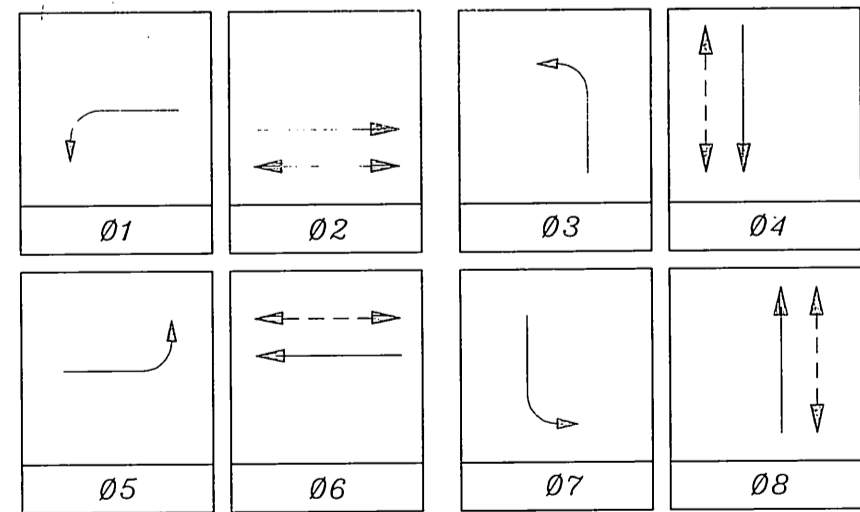
NO.	SIGNAL STANDARD TYPE	H'GHT	M.A.	LUMINAIRE		I.I.S.N.S. LEGEND	SIGNAL MOUNTINGS		PPB PHASE
				L.A.	H.P.S.V.		VEHICLE	PEDESTRIAN	
(A)	24A-4-70(E)	35'	35'(E)	12'(E)	200W(E)		MAS(E)		
							MAS(E)		
							SV-1-T(E)	SP-1-T(E)	4(E)
(B)	1C(E)	10'					TV-2-T(N)	SP-1-T(E)	6(E)
(C)	24A-4-80(N)	30'	35'(N)	12'(N)	200W(R)		MAS(N)		
							MAS(R)		
							SV-1-T(N)	SP-1-T(R)	6(N)
(D)	1C(R)	10'					TV-1-T(N)	SP-1-T(E)	8(E)
(E)	24A-4-70(R)	35'	35'(E)	12'(E)	200W(E)		MAS(E)		
							MAS(E)		
							SV-1-T(E)	SP-1-T(E)	8(E)
(F)	1C(R)	10'					TV-1(E)	SP-1-T(E)	2(E)
(G)	26-4-80(N)	30'	40'(N)	12'(N)	200W(R)		MAS(N)		
							MAS(R)		
							SV-1-T(N)	SP-1-T(R)	2(N)
(H)	1C(E)	10'					TV-1-T(N)	SP-1-T(E)	4(E)

E=EXISTING, N=NEW, R=RELOCATED

NOTES: 1. ALL NEW VEHICULAR HEADS SHALL HAVE 12" LENSES.  
2. ALL LEFT TURN HEADS SHALL HAVE ALL ARROWS.  
3. CONTRACTOR SHALL REMOVE AND SALVAGE EXISTING PPB'S AND REPLACE WITH NEW AS INDICATED.



**PHASE DIAGRAM**



FLASHING OPERATION SHALL BE ALL RED.

**PAVEMENT DELINEATION**

- Indicates striping and pavement markings to be installed.
- Indicates striping and pavement markings to remain.
- Indicates striping and pavement markings to be removed.

NOTE: All pavement delineation work shall be performed by City of Riverside forces; See Special Provisions.

**GENERAL NOTES**

- Detector loops shall be installed in the presence of the Traffic Engineer or his representative.
- All signing, striping, and pavement marking requirements shall be completed at least one day prior to turn-on.
- Typical detector loop spacing: 10', 15'.

**CONSTRUCTION NOTES**

- Remove existing curb and textured concrete to a depth of approx. 0.5 ft. Compact native soil and construct P.C.C. walkway.
- Construct modified P.C.C. curb per City of Riverside Standard Drawing No. 200; match existing-Type 2.
- Construct wheelchair ramp per City of Riverside Standard Drawing No. 304.
- Construct P.C.C. concrete sidewalk per City of Riverside Standard Drawing No. 325.

CONTRACT TE-97-4

**IMPORTANT NOTICE**  
Section 4216/4217 of the Government Code requires a Dig Alert Identification Number to be issued before a "Permit to Excavate" will be valid. For your Dig Alert ID, Number call CALL TOLL FREE TWO WORKING DAYS BEFORE YOU DIG UNDERGROUND SERVICE ALERT 1-800-227-2600

**ENGINEER IN RESPONSIBLE CHARGE**  
Richard D. McRath  
RICHARD D. McRATH  
R.C.E. No. 31852 expires 12-31-2000  
DATE 6/28/97

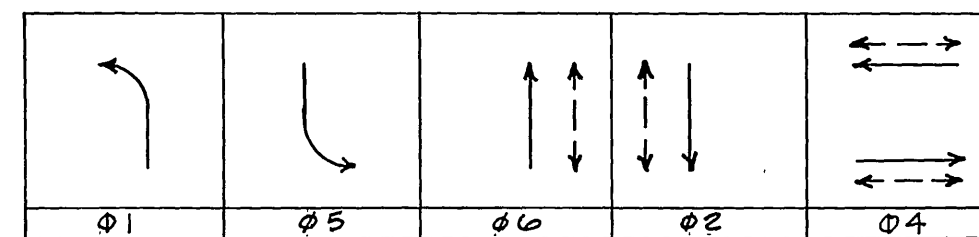
REGISTERED PROFESSIONAL ENGINEER  
RICHARD D. McRATH  
No. 31852  
Exp. 12-31-2000  
CIVIL  
STATE OF CALIFORNIA

DESIGNED BY: [Signature] DRAWN BY: MAC CHECKED BY: [Signature]

CITY OF RIVERSIDE, CALIFORNIA  
DEPARTMENT OF PUBLIC WORKS  
APPROVED BY: [Signature] DATE: 5/29/97  
PRINCIPAL ENGINEER: [Signature]  
P.W. INSPECTION: [Signature]  
TRAFFIC DIVISION: [Signature]  
CHIEF P.W. ENGR.: [Signature]  
PUBLIC UTILITIES: [Signature]

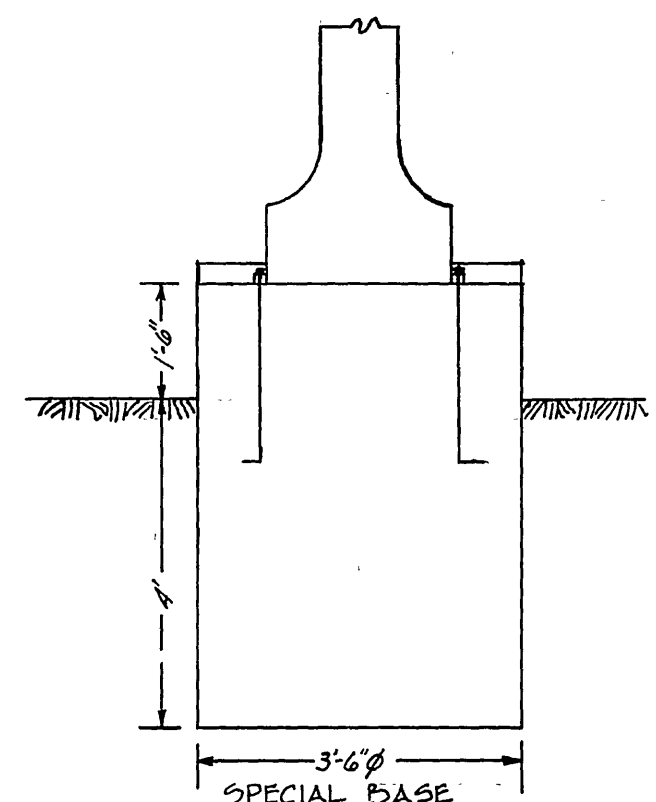
TRAFFIC SIGNAL MODIFICATION  
MAGNOLIA AVENUE @ JACKSON STREET  
SCALE: 1" = 20'  
ACCT. NO. 0432-541600-440302-35050  
X-305A  
SHEET 1 OF 1  
FILE NAME: X305A.DWG

PHASE DIAGRAM

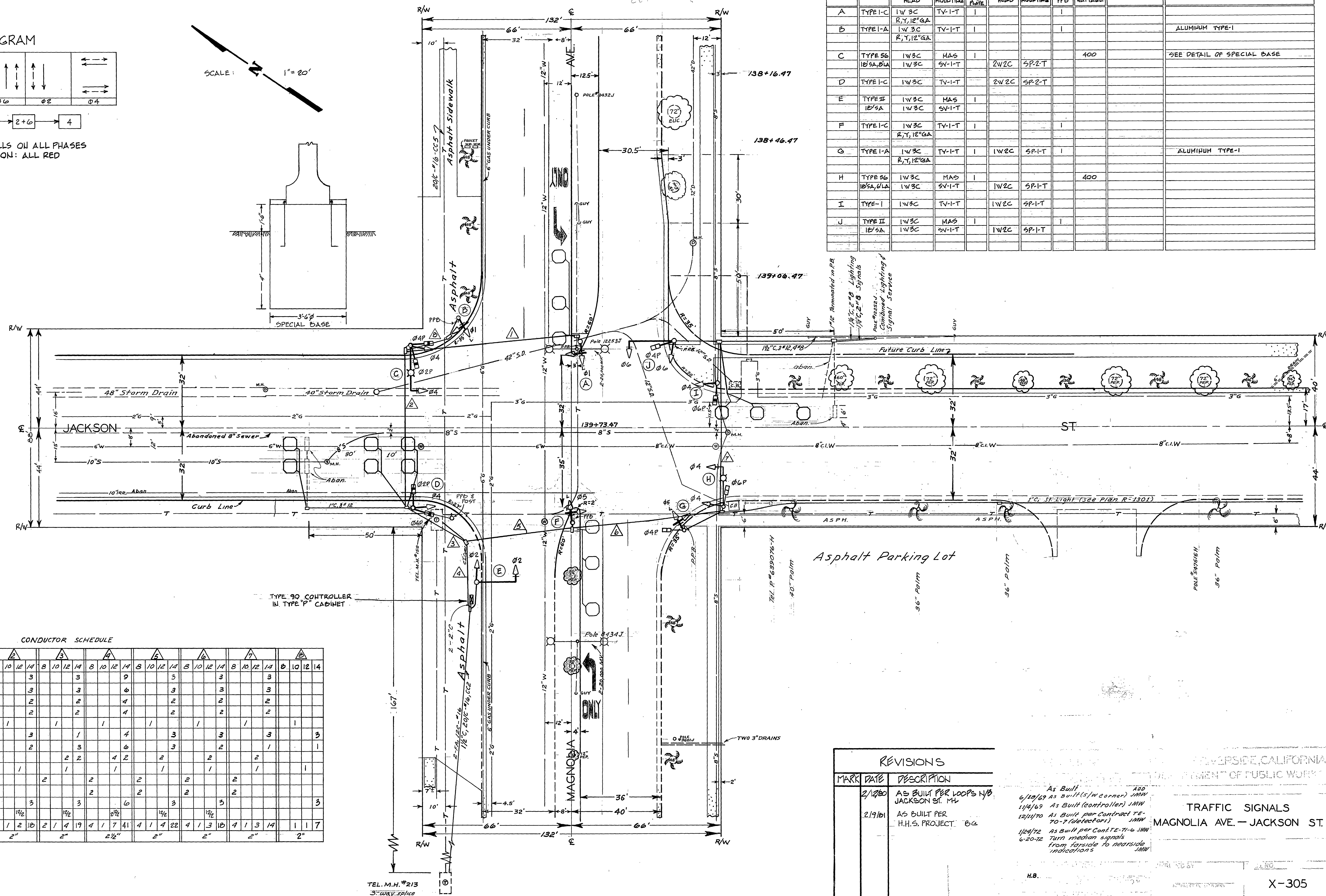


SEQUENCE WITH CALLS ON ALL PHASES  
FLASHING INDICATION: ALL RED

SCALE: 1" = 20'



LOCATION	STANDARD	VEHICLE HEADS			PEDESTRIAN HEADS			LUMINAIRE	INT. ILLUM. STREET NAME SIGN	REMARKS
		HEAD	MOUNTING	BACK PLATE	HEAD	MOUNTING	PPB			
A	TYPE I-C	1W 3C	TV-1-T	1						
B	TYPE I-A	R,Y,12"GA	TV-1-T	1						ALUMINUM TYPE-1
C	TYPE 56	1W 3C	MAS	1			400			SEE DETAIL OF SPECIAL BASE
D	TYPE I-C	1W 3C	TV-1-T	1						
E	TYPE II	1W 3C	MAS	1						
F	TYPE I-C	1W 3C	TV-1-T	1						
G	TYPE I-A	1W 3C	TV-1-T	1	1W 2C	SP-1-T				ALUMINUM TYPE-1
H	TYPE 56	1W 3C	MAS	1			400			
I	TYPE I	1W 3C	TV-1-T		1W 2C	SP-1-T				
J	TYPE II	1W 3C	MAS	1						



CONDUCTOR SCHEDULE

CONDUCTOR RUN	1		2		3		4		5		6		7		8					
CONDUCTORS	8	10	12	14	8	10	12	14	8	10	12	14	8	10	12	14	8	10	12	14
Φ 2, Φ 6				3				3				3				3				3
Φ 4				3				3				3				3				3
Φ 2, Φ 6 W-DW				2				2				2				2				2
Φ 4 W-DW				2				2				2				2				2
110 V Neutral	1			1	1			1	1			1	1			1	1			1
Spares				3				3				3				3				3
Φ 4 PPB				1				2				3				2				1
Φ 4 Det				2				2				2				2				2
12V Neutral	1			1	1			1	1			1	1			1	1			1
Luminaires				2				2				2				2				2
Signal Service				3				3				3				3				3
Φ 1, Φ 5				3				3				3				3				3
Φ 1, Φ 5 DET. CABLE	1/2			1/2	1/2			1/2	1/2			1/2	1/2			1/2	1/2			1/2
TOTAL CONDUCTORS	1	2	10	2	1	2	10	2	1	4	19	4	1	7	41	4	1	3	10	4
CONDUIT SIZE	1 1/2"			2"	2"			2 1/2"	2"			2"	2"			2"	2"			2"

MARK	DATE	DESCRIPTION
	2/12/80	AS BUILT PER LOOPS N/B JACKSON ST. M.H.
	2/19/81	AS BUILT PER H.H.S. PROJECT '84

As Built  
6/10/89 As built (w/corner) JMW  
1/14/89 As built (controller) JMW  
12/1/70 As built per contract TE-70-7 (detector) JMW  
1/24/72 As built per contract TE-71-6 JMW  
6-20-72 Turn direction signals from outside to nearside indications JMW

TRAFFIC SIGNALS  
MAGNOLIA AVE. — JACKSON ST.