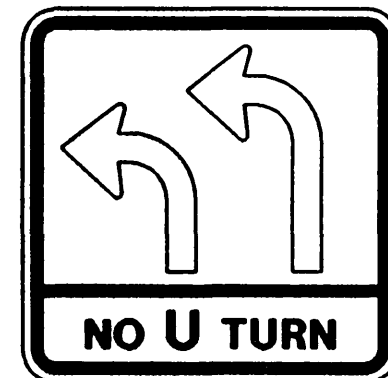
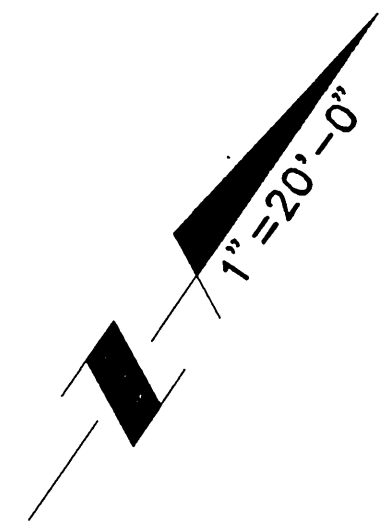


CONDUCTOR SCHEDULE		CONDUIT RUN					
AWG	CONDUCTOR	1	2	3	4	5	6
#14	#2	3	3	3	3		
	#4	3	3	3	5		
	#5	3	3	3	6	3	3
	#5	2	2	2			
	#6				3		
	#4PED	2	2	4	2		
	#6PED			1	2	2	2
	#2 BIKE PB	1	1	1			
	#4PPB	1	1	2			
	#6PPB			2	2	1	
PPB COMMON	1	1	2	1	1		
SPARE	3	3	3	6	3	3	
TOTAL #14		9	19	20	38	13	10
#12	I.S.N.S.	2	2	2			
#10	SIGNAL COMMON	1	1	1	2	1	1
#8	LUMINAIRE	2	2	2	2	2	
#6	SERVICE				2		
DLC	#2		2	2	2		
	#4				3	3	
	#5		3	3	3		
	#6				4	4	4
	#6 BIKE				1	1	1
TOTAL DLC		5	5	13	8	5	
CONDUIT SIZE		2"	2 1/2"	2 1/2"	3"	2 1/2"	2 1/2"

INSTALL ALL NEW CONDUCTORS AND CONDUITS UNLESS OTHERWISE NOTED:
(E) = EXISTING TO REMAIN

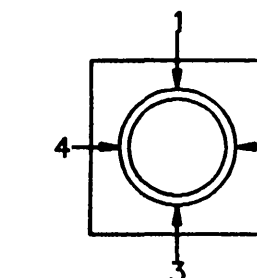


R73-3 (SPECIAL)

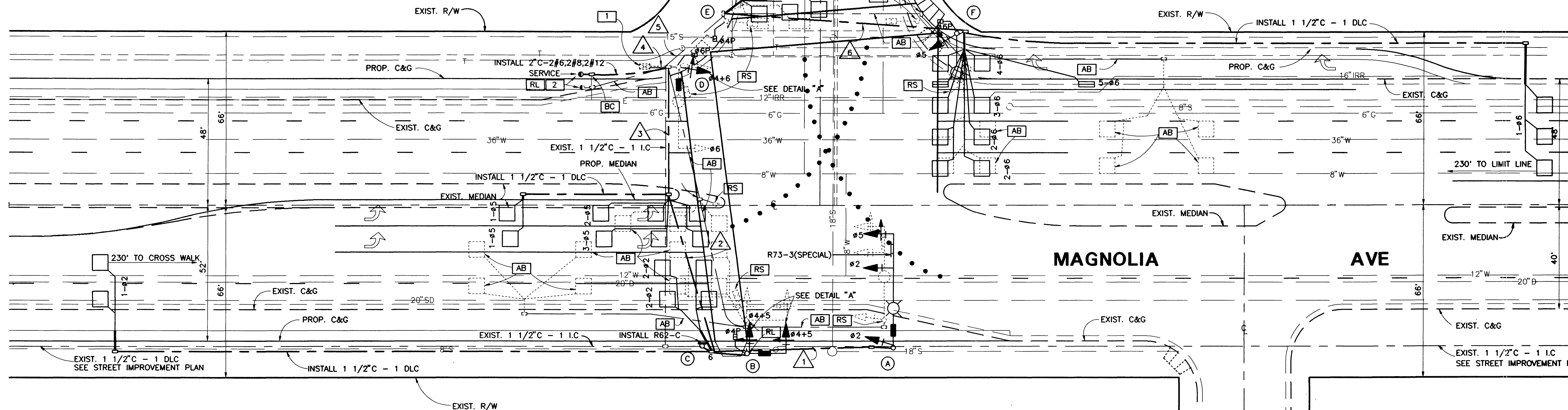


POLE SCHEDULE											
NO.	TYPE	MAST ARM LENGTH		SIGNAL MOUNTING			PPB	H.P.S. LUMINAIRE	I.S.N.S. LEGEND	REMARKS	
		HEIGHT	SIGNAL	LUMINAIRE	MA	POLE					PED
(A)	26A-4-80	35'	45'	15'	2-MAS	SV-1-T	SP-1-T		400 W.	Harrison ST 3800	INSTALL NEW POLE AND EQUIPMENT SALVAGE EXIST. POLE AND EQUIPMENT
(B)	TYPE 16	18'	15'		MAS	SV-1-T	SP-1-T	Ø4	N	Magnolia AVE 9800	RELOCATE POLE AND EQUIPMENT TO NEW LOCATION AS SHOWN
(C)	PPB POST	3'-10"						Ø2	1		INSTALL NEW POST & EQUIPMENT
(D)	TYPE 19A	35'	30'	15'	MAS	SV-1-T	SP-1-T	Ø4	2	Harrison ST (N) 3800	EXIST. POLE AND EQUIPMENT TO REMAIN INSTALL NEW I.S.N.S.
(E)	TYPE 1	7'					TP-1-T	Ø6	3		EXIST. POLE AND SIGNAL HEAD REPLACE AND ROTATE EXIST. PED HEAD AS SHOWN
(F)	TYPE 30	35'		15'		SV-1-T	SP-1-T	Ø6	1	400 W.	INSTALL NEW POLE AND EQUIPMENT SALVAGE EXIST. POLE AND EQUIPMENT
(G)											
(H)											

EXACT POLE LOCATION TO BE DETERMINED IN THE FIELD BY THE ENGINEER
(N) = NEW

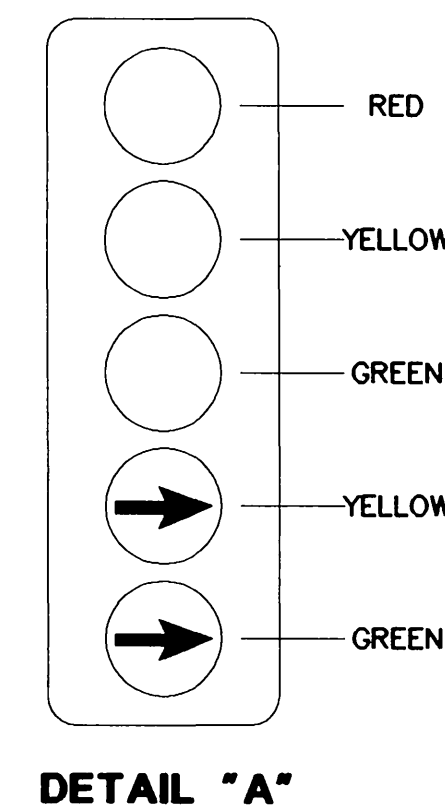
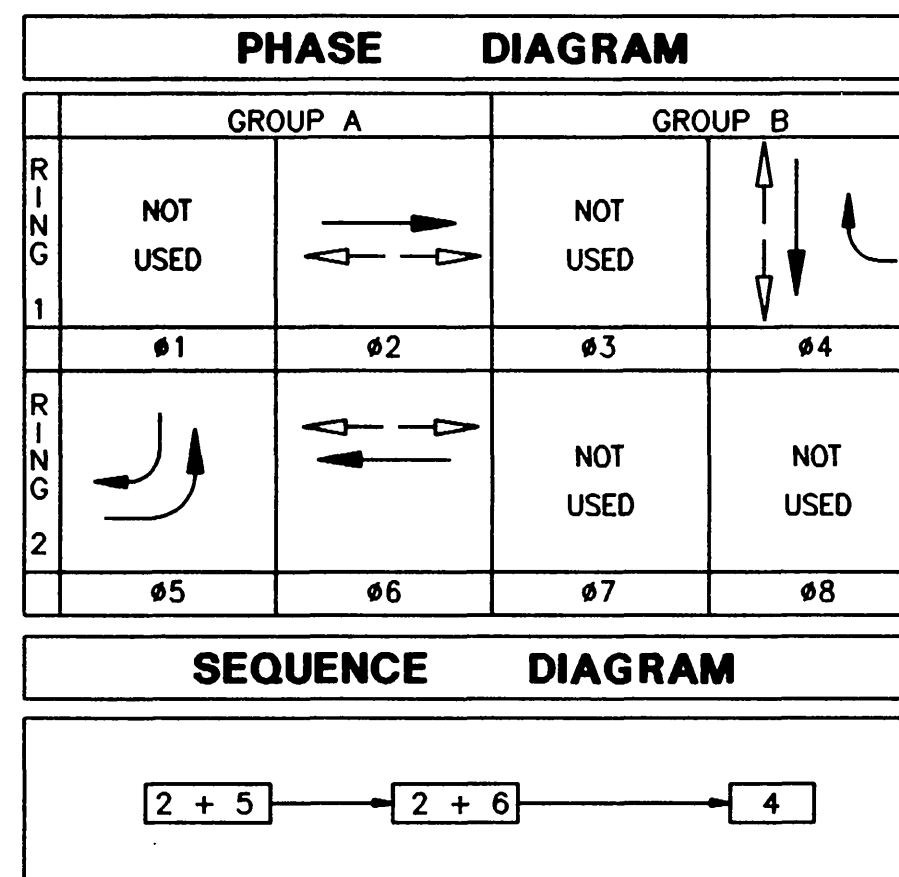


QUADRANT PEDESTRIAN PUSH BUTTON LOCATION (TOP VIEW)



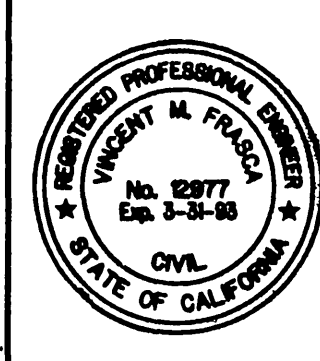
CONSTRUCTION NOTES:

- REMOVE AND SALVAGE EXIST. TYPE M-1 CABINET, INSTALL EXIST. TYPE 90 CONTROLLER IN NEW TYPE 'P' CABINET AND CONSTRUCT. 'P' CABINET FOUNDATION AROUND EXISTING FOUNDATION PER EXHIBIT 'C'. ADD DETECTOR UNIT, LOAD SWITCHES AND ADDITIONAL CABINET EQUIPMENT NEEDED. (SEE SPECIAL PROVISIONS)
- RELOCATE EXISTING 120 V SIGNAL AND 240V LUMINAIRE. INSTALL NEW 120V SIGN. TYPE 1-A SERVICE POLE PER CITY STD. DWG. #667. CITY TO PROVIDE NEW BREAKERS AND ENCLOSURE



Underground Service Alert
Call: TOLL FREE
1 - 800
422 - 4133
TWO WORKING DAYS BEFORE YOU DIG

PRIVATE ENGINEERING NOTE
CONSTRUCTION CONTRACTOR AGREES THAT IN ACCORDANCE WITH GENERALLY ACCEPTED CONSTRUCTION PRACTICES, CONSTRUCTION CONTRACTOR WILL BE REQUIRED TO ASSUME SOLE AND COMPLETE RESPONSIBILITY FOR JOB SITE CONDITIONS DURING THE COURSE OF CONSTRUCTION OF THE PROJECT, INCLUDING SAFETY OF ALL PERSONS AND PROPERTY; THAT THIS REQUIREMENT SHALL BE MADE TO APPLY CONTINUOUSLY AND NOT BE LIMITED TO NORMAL WORKING HOURS, AND CONSTRUCTION CONTRACTOR FURTHER AGREES TO DEFEND, INDEMNIFY AND HOLD DESIGN PROFESSIONAL HARMLESS FROM ANY AND ALL LIABILITY, REAL OR ALLEGED, IN CONNECTION WITH THE PERFORMANCE OF WORK ON THIS PROJECT, EXCEPTING LIABILITY ARISING FROM THE SOLE NEGLIGENCE OF DESIGN PROFESSIONAL.



PREPARED UNDER THE DIRECTION OF
James B. Dobbins
REGISTERED CIVIL ENGINEER NO: 12977
EXPIRATION DATE: 3/31/93 DATE:
RECOMMENDED BY:
James B. Dobbins
James B. Dobbins DATE: 12-19-90

J.F. Davidson Associates, Inc.
ENGINEERING PLANNING SURVEYING
ARCHITECTURE LANDSCAPE ARCHITECTURE
MUNICIPAL ENGINEERING DIVISION
3426 TENTH STREET
RIVERSIDE, CA 92502 FAX (714) 686-5807
SCALE: 1"=20'-0" BENCH MARK:
DATE: DECEMBER, 90

MARK REVISIONS APPR. DATE
DESIGNED BY: K.T.O. DRAWN BY: KTO/RWD CHECKED BY: *[Signature]*

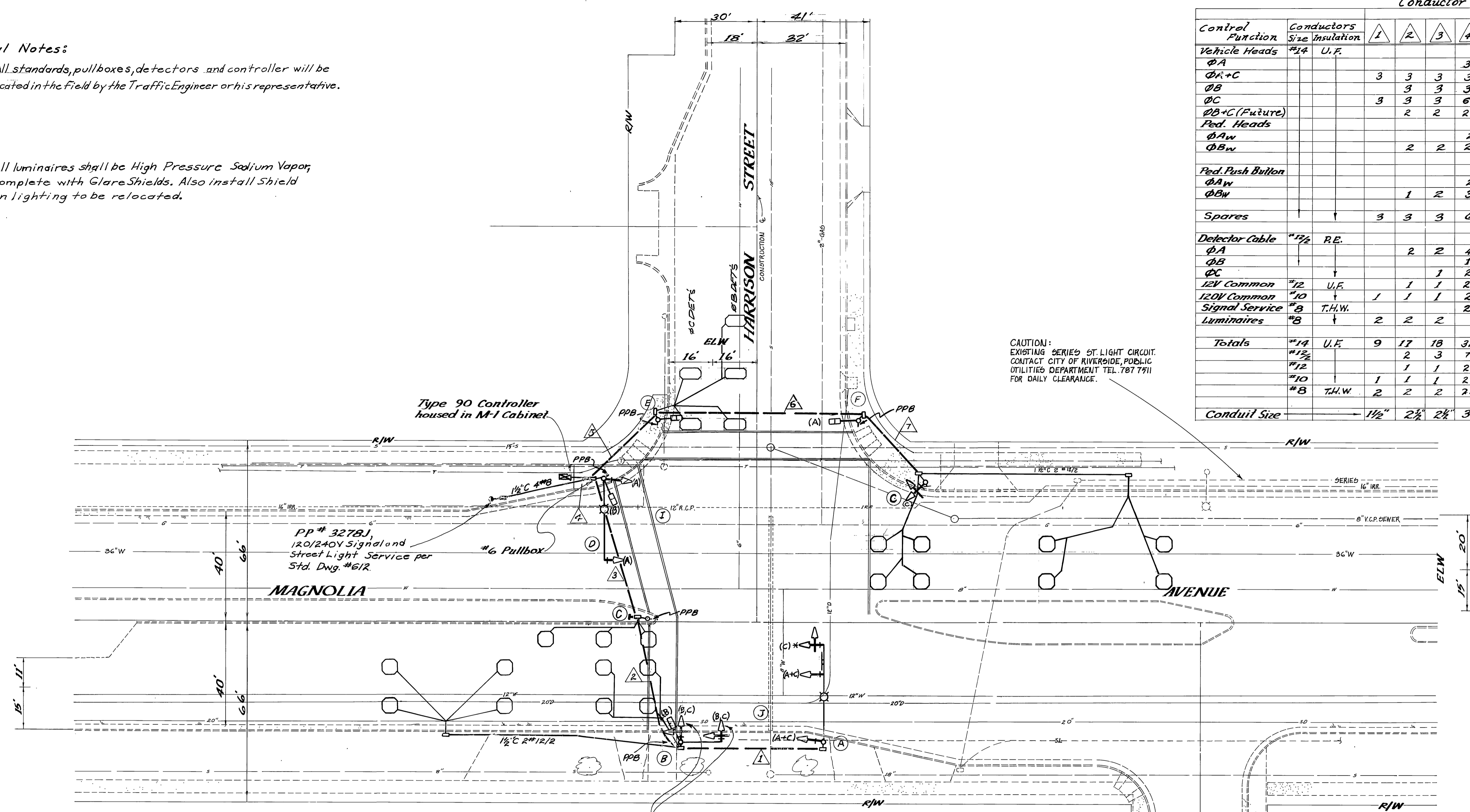
CITY OF RIVERSIDE, CALIFORNIA
DEPARTMENT OF PUBLIC WORKS
APPROVED BY: *[Signature]* BY: DATE: 12/20/90
PRINCIPAL ENGINEER
INSPECTION
TRAFFIC DIVISION
CHIEF P.W. ENGINEER
PUBLIC UTILITIES

TYLER MALL EXPANSION
C.F.D. # 90-2 IMPROVEMENTS
TRAFFIC SIGNAL MODIFICATION PLAN
MAGNOLIA AVENUE
AND
HARRISON STREET
HORIZ SCALE: 1" VERT. SCALE: 1"

PROJECT NO.
X-311
SHEET 1 OF 1
FILE NO: 8911175

General Notes:

- All standards, pullboxes, detectors and controller will be located in the field by the Traffic Engineer or his representative.
- All luminaires shall be High Pressure Sodium Vapor, complete with Glare Shields. Also install shield on lighting to be relocated.



Control Function	Conductors Size Insulation	Conductor Schedule						
		1	2	3	4	5	6	7
Vehicle Heads	#14 U.F.							
ΦA					3			
ΦA+C		3	3	3	3			
ΦB		3	3	3				
ΦC		3	3	3	6	3	3	3
ΦB+C (Future)			2	2	2			
Ped. Heads								
ΦAw					2	2	2	
ΦBw			2	2	2			
Ped. Push Button								
ΦAw					2	2	1	
ΦBw			1	2	3			
Spares		3	3	3	6	3	3	3
Detector Cable	#12 R.E.							
ΦA			2	2	4	2	2	2
ΦB					1	1		
ΦC				1	2	1		
12V Common	#12 U.F.		1	1	2	1	1	
120V Common	#10	1	1	1	2	1	1	1
Signal Service	#8 T.H.W.				2			
Luminaires	#8	2	2	2				
Totals	#14 U.F.	9	17	18	32	10	9	6
	#12		2	3	7	4	2	2
	#12		1	1	2	1	1	
	#10		1	1	1	2	1	1
	#8 T.H.W.		2	2	2			
Conduit Size		1 1/2"	2 1/2"	2 1/2"	3"	2 1/2"	2"	1 1/2"

CAUTION: EXISTING SERIES ST. LIGHT CIRCUIT. CONTACT CITY OF RIVERSIDE, PUBLIC UTILITIES DEPARTMENT TEL. 787 7911 FOR DAILY CLEARANCE.

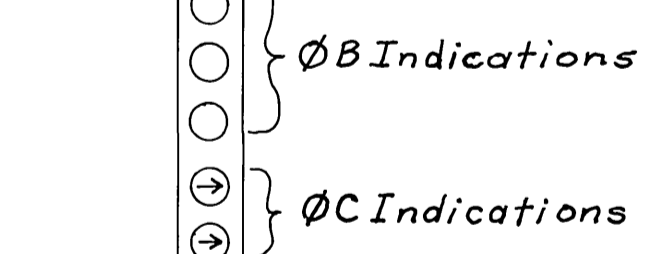
Equipment Schedule

Location	Standard	Vehicle Equipment			Ped. Equip.		Luminaire	Remarks
		Heads	Mtg.	Back Plate	Heads	Mtg.		
A	Type XXIV-A 15'LA, 35'SA	1 W3C(12) 1 W3C(12)	M-2 M-2	1 1			400W	
B	Type XXV 15'SA	1 W5CYA(12) 1 W5CYA(12)	M-2 B-1	1 1	1WRC	W-0	1	
C	PPB Post							1
D	Type XXIX 15'LA, 30'SA	1 W3C(12) 1 W3C(12)	M-2 B-1	1 1	1W2C	W-0	1	
E	7' Type I				1WRC	W-1	1	
F	7' Type I				1WRC	W-1	1	
G	Type I	1 W3C(12CA)	A-2	1				
H								
I								
J								

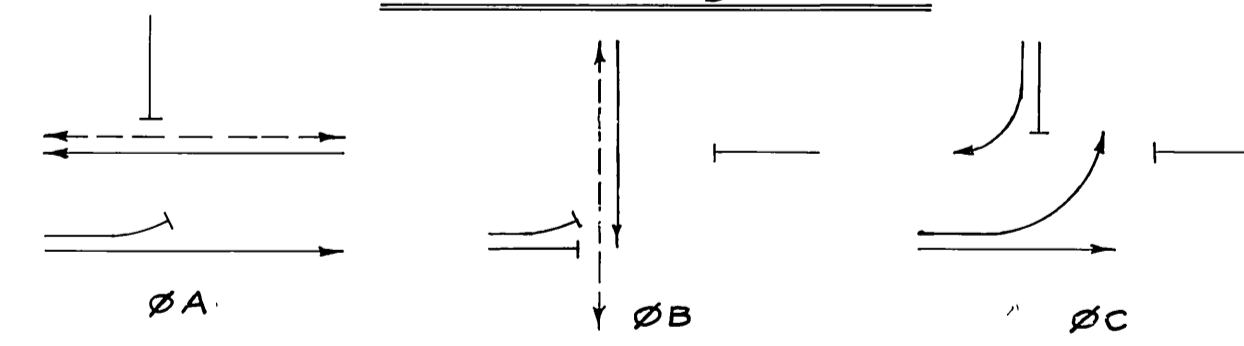
Signing Requirements

LOCATION	CODE NO.	SIZE	MOUNTING	FACING	REMARKS
A	R73A	38"x22"	Overhead	W	See State Standard
	R34-B	30"x18"	Signal Std.	W	Plan ES-6-C-2 Detail G
	R49(RT)	36"x18"	1-Wood Post	N	See State Standard
C	R-34	24"x24"	1-Wood Post	W	Also Provide Sign Brace
	R-34-B	24"x18"	4"x4"x14'	W	
G	R-73	24"x36"	Signal Std.	W	See City Standard
	R-34-B	24"x18"	Signal Std.	W	Plan No. 66B
	R-49(LT)	36"x18"	Signal Std.	S	See State Standard

Note: All Sign Codes are California State Standard.



Phase Diagram



Flashing Indications: All Red
 ΦA = Type S P Module
 ΦB = Type SP Module
 ΦC = Type S Module

CITY OF RIVERSIDE, CALIFORNIA PUBLIC WORKS DEPARTMENT		TRAFFIC SIGNALS MAGNOLIA AVENUE AND HARRISON STREET (N)		ACCOUNT No. 30-576-308 DRAWING NUMBER X-311 SHEET 1 OF 1
DESIGNED BY: E. DRAWN BY: B.B. CHECKED BY: J.L.J.	APPROVED BY: [Signature] DATE: 11-8-74	APPROVED BY: [Signature] DATE: 11-8-74	SCALE: 1" = 20'-0"	