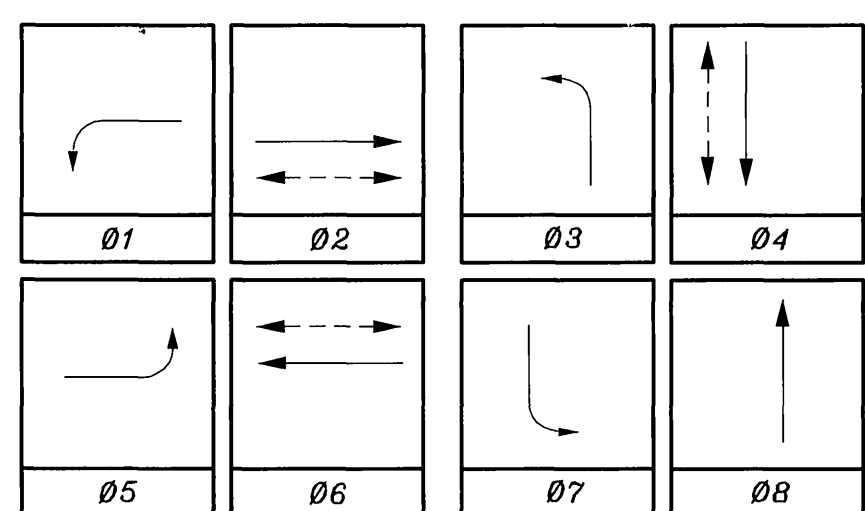


CONDUCTOR		TABLE							
CONTROL FUNCTION	CONDUCTORS	CONDUCTOR				RUNS			
		1	2	3	4	5	6	7	8
VEHICLE & PEDESTRIAN HEADS, PEDESTRIAN PUSH BUTTONS, SPARES & COMMONS	12CSC 3CSC	1	2	3	4	5	6	7	8
DETECTOR CABLE	#16/2	-	-	-	-	-	-	-	-
PHASE 1		-	-	-	-	1	-	1	-
PHASE 2		-	-	-	2	2	-	-	-
PHASE 3		-	2	2	2	2	-	-	-
PHASE 4		-	-	-	-	2	2	-	-
PHASE 5		-	-	-	2	2	-	-	-
PHASE 6		-	-	-	-	3	-	3	-
PHASE 7		-	1	1	1	1	-	-	-
PHASE 8		-	1	1	1	1	-	-	-
TOTALS		-	2	2	6	13	3	4	-
INTERCONNECT CABLE	6PR #19	1	1	1	1	1	-	-	-
RR PRE-EMPT	3CSC	1	1	1	1	1	-	-	-
I.I.S.N.S.	#12	-	-	2	2	-	-	2	-
LUMINAIRES	#8	2	2	2	2	-	-	2	-
SIGNAL SERVICE	#6	-	-	-	-	2	-	-	-
CONDUIT SIZE		2"	3"	3"	3.5"	2-3"	2"	3"	2"
(E)=EXISTING (N)=NEW		(E)	(N)	(N)	(N)	(N)	(E)	(N)	(N)

**NOTE:**  
SIGNAL SYSTEM SHALL HAVE NEW CSC CABLES AND NEW CONDUCTORS.

**PHASE DIAGRAM**



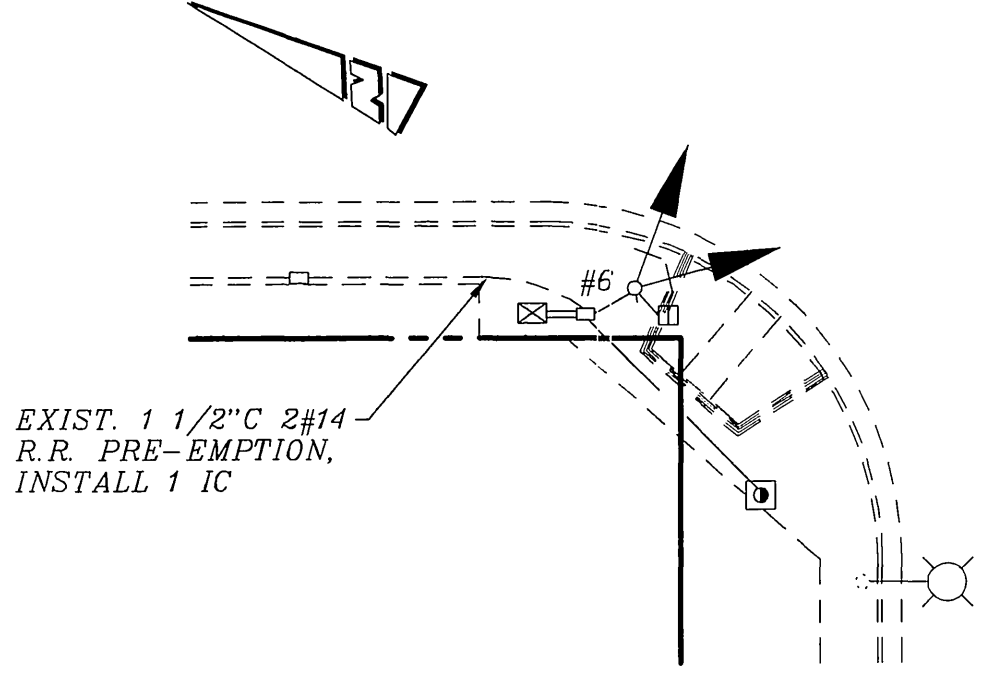
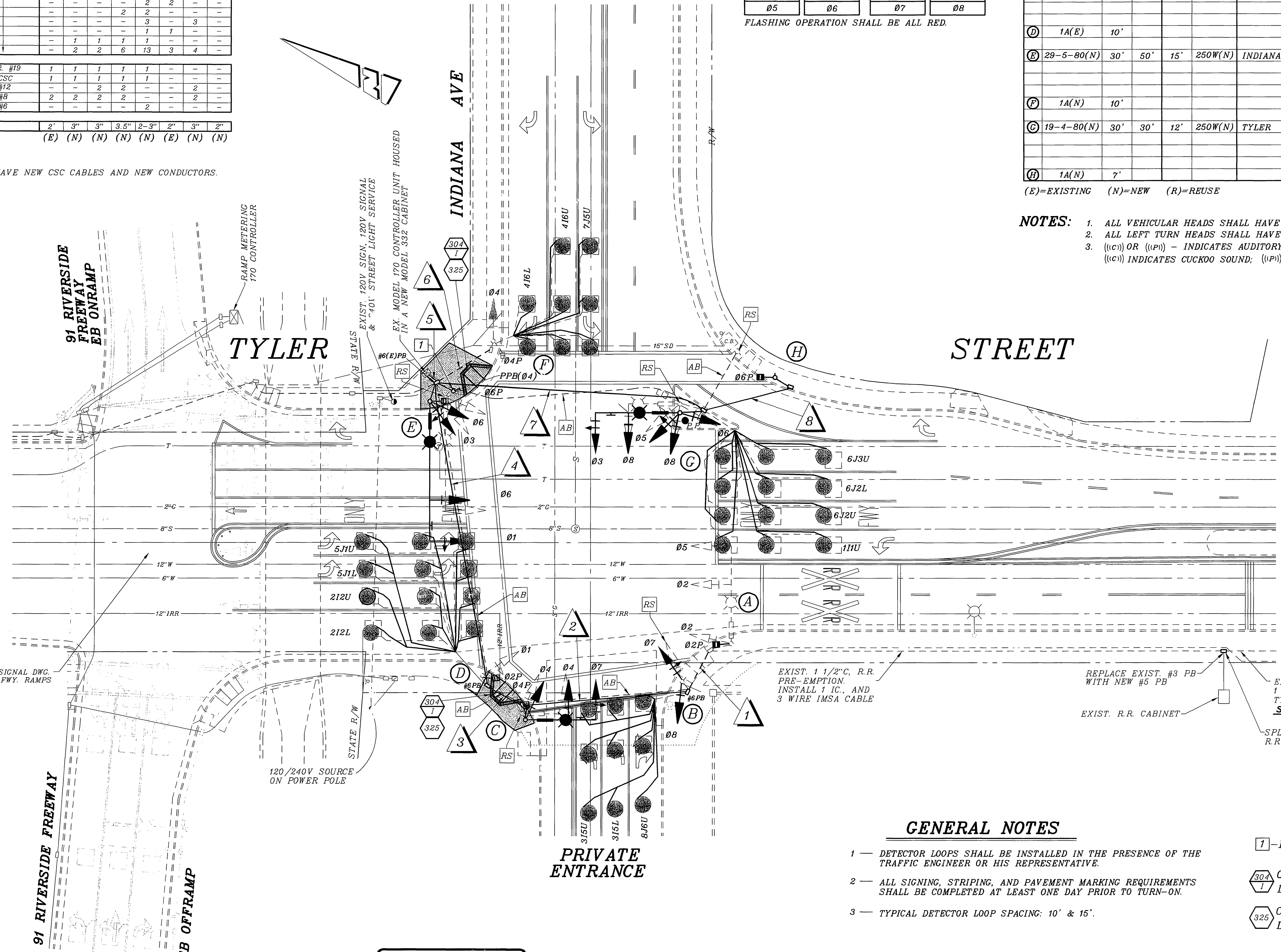
FLASHING OPERATION SHALL BE ALL RED.

**EQUIPMENT SCHEDULE**

NO.	SIGNAL STANDARD		LUMINAIRE		I.I.S.N.S.		VEHICLE	PEDESTRIAN	AUDIBLE	PPB PHASE	REMARKS
	TYPE	H'GHT	M.A.	L.A.	H.P.S.V.	LECOND					
(A)	24A-4-80(E)	35'	35'(E)	15'(E)	400W(E)	INDIANA	AVE 10200 (E)	MAS(E)			
								MAS(E)			
								SV-1-T(N)	SP-1-T(N)	((ic)) (N)	
(B)	1A(N)	10'						TV-2-T(N)			2(N)
(C)	19-4-80(N)	30'	25'	12'	250W(N)	TYLER	ST 3400 (R)	MAS(N)			
								MAS(N)			
								SV-1-T(N)	SP-1-T(N)	((ip)) (N)	2(N)
(D)	1A(E)	10'						TV-1-T(E)	SP-1-T(N)	((ic)) (N)	4(N)
(E)	29-5-80(N)	30'	50'	15'	250W(N)	INDIANA	AVE 10200 (R)	MAS(N)			PPB-SEE CONST. NOTE [1]
								MAS(N)			
								SV-2-TB(N)	SP-1-T(N)	((ic)) (N)	
(F)	1A(N)	10'						TV-1-T(N)	SP-1-T(N)	((ip)) (N)	6(N)
(G)	19-4-80(N)	30'	30'	12'	250W(N)	TYLER	ST 3302 (N)	MAS(N)			
								MAS(N)			
								SV-3-TB(N)			
(H)	1A(N)	7'						TP-1-T(N)	((ic)) (N)		6(N)

(E)=EXISTING (N)=NEW (R)=REUSE

- NOTES:**
- ALL VEHICULAR HEADS SHALL HAVE 12" LENSES.
  - ALL LEFT TURN HEADS SHALL HAVE ALL ARROWS.
  - ((ic)) OR ((ip)) - INDICATES AUDITORY PEDESTRIAN SIGNAL TO BE INSTALLED. ((ic)) INDICATES CUCKOO SOUND; ((ip)) INDICATES PEEP-PEEP SOUND.



**DETAIL - "A"**  
TYLER ST. & INDIANA AV. (SOUTH)  
NW CORNER

SEE CITY OF RIVERSIDE TRAFFIC SIGNAL DWG. NO. X-320A FOR TYLER ST. & 91 FWY. RAMPS INTERSECTION MODIFICATIONS

EXIST. 1 1/2" C. R.R. PRE-EMPTION. INSTALL 1 IC, AND 3 WIRE IMSA CABLE

REPLACE EXIST. #3 PB WITH NEW #5 PB

EXIST. 1 1/2" C. #14 R.R. PRE-EMPTION. INSTALL 1 IC TO CONTROLLER CABINET AT NW CORNER OF TYLER ST. & INDIANA AV. (SOUTH). SEE DETAIL - "A"

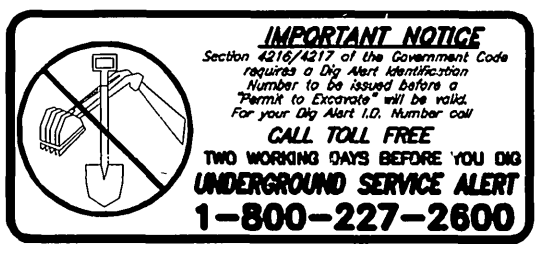
SPLICE POINT R.R. PRE-EMPT

**GENERAL NOTES**

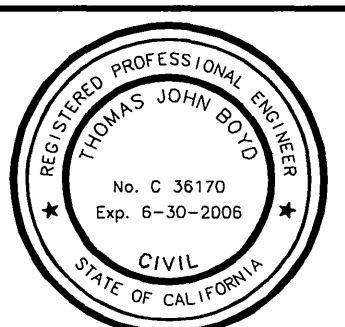
- DETECTOR LOOPS SHALL BE INSTALLED IN THE PRESENCE OF THE TRAFFIC ENGINEER OR HIS REPRESENTATIVE.
- ALL SIGNING, STRIPING, AND PAVEMENT MARKING REQUIREMENTS SHALL BE COMPLETED AT LEAST ONE DAY PRIOR TO TURN-ON.
- TYPICAL DETECTOR LOOP SPACING: 10' & 15'.

**CONSTRUCTION NOTES**

- [1] - INSTALL NEW PED. PUSH BUTTON (04P) AND POST.
- [304] - CONSTRUCT WHEELCHAIR RAMP PER CITY OF RIVERSIDE STANDARD DRAWING NO. 304, TYPE I.
- [325] - CONSTRUCT P.C.C. SIDEWALK PER CITY OF RIVERSIDE STANDARD DRAWING NO. 325.



**ENGINEER IN RESPONSIBLE CHARGE**  
THOMAS JOHN BOYD  
R.C.E. No. 36170  
DATE: 7/21/04



MARK	REVISIONS	APPR.	DATE

**CITY OF RIVERSIDE, CALIFORNIA**  
**DEPARTMENT OF PUBLIC WORKS**

APPROVED BY: [Signature] DATE: 7/21/04  
PRINCIPAL ENGINEER

APPROVED BY: [Signature] DATE: 7/21/04  
CITY ENGINEER

**TRAFFIC SIGNAL MODIFICATION**

**TYLER STREET**  
**AT INDIANA AVENUE**

SCALE: 1" = 20'

**CONTRACT TE-04-01**

ACCT. NO. 9756433214-44030200

**X-321A**

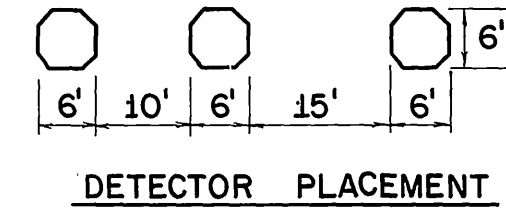
SHEET 1 OF 1

FILE NAME: X320A-1.DWG

CONDUCTOR		TABLE					
AWG	CIRCUIT	△	△	△	△	△	△
#14	0 1	3	3	3	3	3	6
	0 2	-	-	-	3	-	6
	0 4	-	3	3	3	3	6
	0 5 (Fut.)						
	0 6	3	3	3	3	3	3
	0 2 PED					2	6
	0 4 PED	2	2	2	2	2	4
	0 6 PED	2	2	2	2	2	4
	0 2 PPB	1	1	1	2	1	2
	0 4 PPB	1	1	2	2	1	4
0 6 PPB	1	1	2	2	1	2	
SPARES	3	3	3	3	3	6	
TOTAL		12	18	19	23	15	47
#12	PPB COMMON	1	1	1	1	1	2
	I.S.N.S.	2	2	2	2	2	2
	TOTAL	3	3	3	3	3	4
2 - #12 CABLE	0 1 DETECTOR	-	-	-	1	2	
	0 2 DETECTOR	-	-	-	4	4	
	0 4		1	1	1	2	
	0 5 (Fut.)						
	0 6				2	2	
TOTAL CABLES		1	1	4	4	10	
#8 LUMINAIRE	2	2	2	2	2	2	
#10 SIGNAL COMMON	1	1	1	1	1	2	
#14 PRE-EMPTION	2	2	2	2	2	2	
CONDUIT SIZE		2"	2 1/2"	2 1/2"	3"	2 1/2"	2-2 1/2"

SENSOR TABLE	
SENSOR	LOOP DETECTORS
1	1-N-1
2	2-N-6
3	3-N-6
4	1-S-2
5	2-S-2
6	1-E-4
7	1-W-4
8	2-E-1

\*= SENSOR SHALL HAVE A SEPARATE OR INTEGRAL MIN. 0-30 SECOND ADJUSTABLE DELAY TIMER

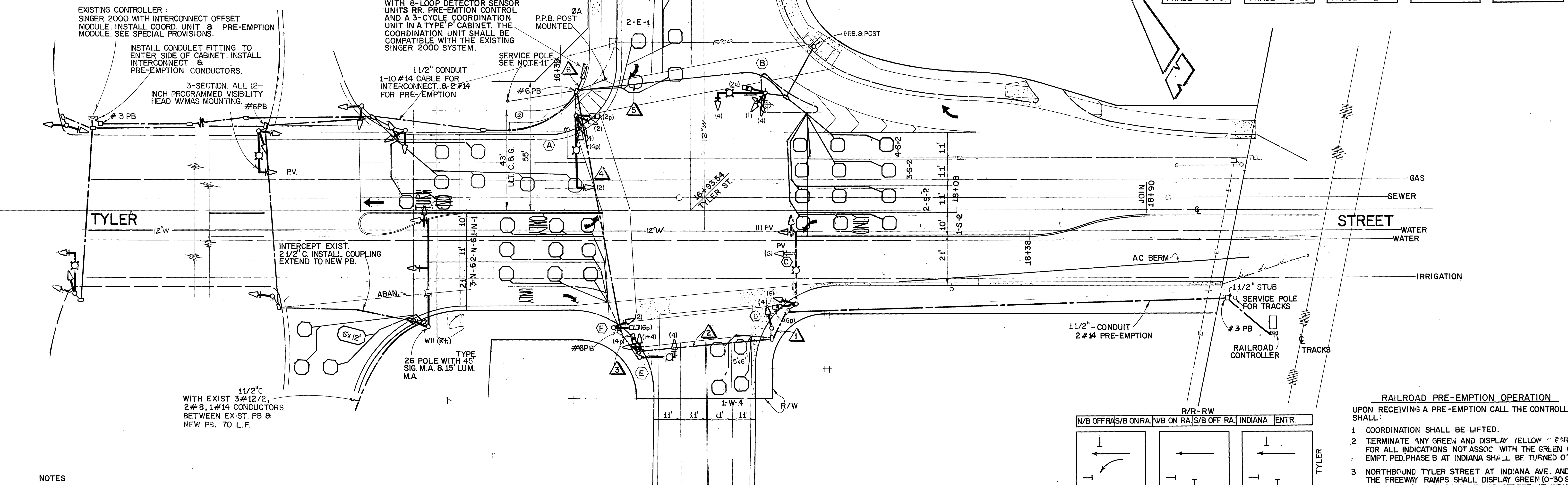
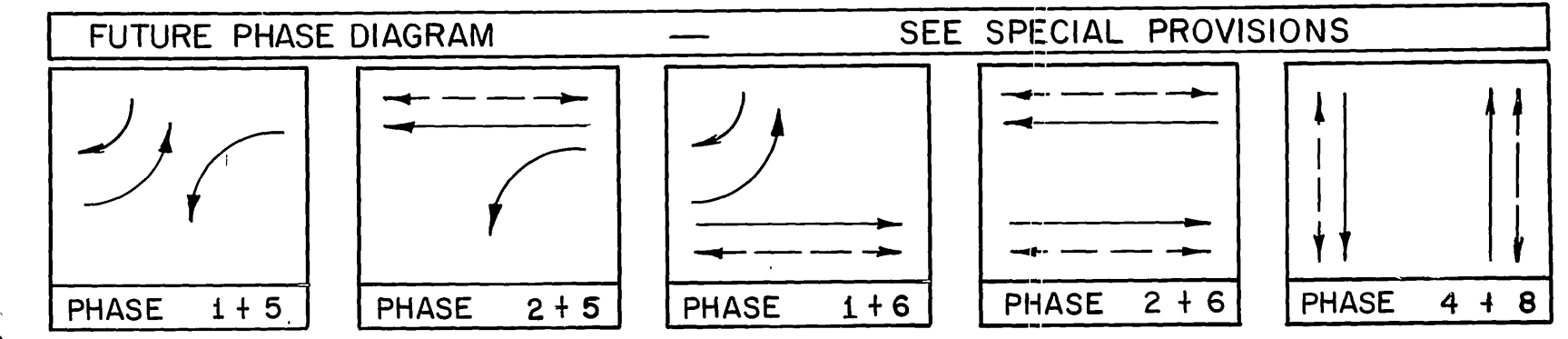
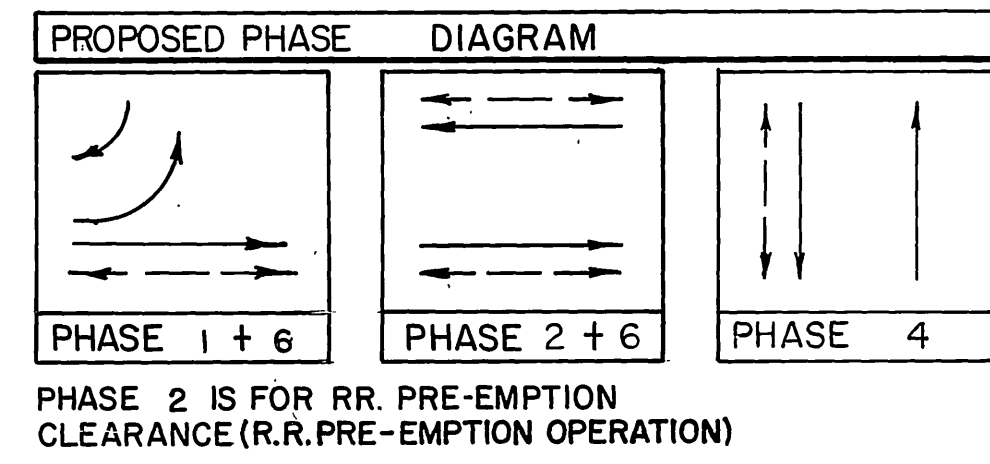


5 Ø TYPE 90 CONTROLLER WITH 8-LOOP DETECTOR SENSOR UNITS RR. PRE-EMPTION CONTROL AND A 3-CYCLE COORDINATION UNIT IN A TYPE 'P' CABINET. THE COORDINATION UNIT SHALL BE COMPATIBLE WITH THE EXISTING SINGER 2000 SYSTEM.

POLE		SCHEDULE										
No.	TYPE	HEIGHT	STANDARD			LUMINAIRE	I.S.N.S. LEGEND	SIGNAL VEHICLE	MTG. PED	PED. PUSH BTN. TYPE	PHASE	REMARKS
			SIG.M.A.	LUM.M.A.								
(A)	19A-4-70	35'	30'	15'	400WH.PSV.	Indiana Ave	MAS	SV2-T	SP-2-T	B	4	INSTALL TYPE 'P' CONTROL FOR I.S.N.S. CIRCUIT SWITCHING
(B)	17A-2-70	35'	20'	15'	400WH.PSV.	Tyler	MAS	SV2-TA	SP-1-T	B	2	
(C)	19A-2-70	35'	30'	15'	400WH.PSV.	Indiana Ave	MAS	SV-1-T	SP-1-T	-	-	MAS= PROG. VISIBILITY HEAD
(D)	1-A	10'	-	-	-	-	-	TV-1-T	-	B	6	12" VEHICULAR INDICATION
(E)	17A-2-70	35'	15'	15'	250 WH.PSV.	Tyler	MAS	SV-1-T	SP-1-T	B	6	5 SECTION, R, Gr, Y, Gr & Y ARROWS
(F)	1-A	10'	-	-	-	-	-	TV-1-T	SP-1-T	B	4	
(G)	26-3-70	30'	45'	15'	-	-	-	-	-	-	-	SEE NOTE AT LOCATION G

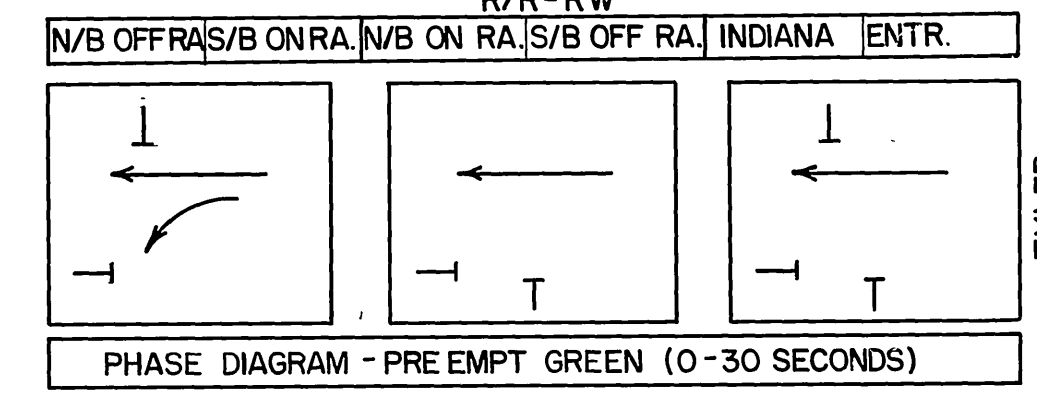
I.S.N.S. = ILLUMINATED STREET NAME SIGN  
ARROW SHOWN FOR I.S.N.S. LOCATION (C) SHALL BE ON FRONT SIDE ONLY.  
TYPE 1-A 10' POLES ARE TO BE ALUMINUM.

NOTE: SEE PLAN X-320 SHEET 2 OF 2 FOR COORDINATION PHASE DIAGRAM.



- NOTES
- ALL WORK AND MATERIAL SHALL CONFORM TO THIS PLAN THE STANDARD PLANS AND SPECIFICATIONS OF THE CALIFORNIA DEPARTMENT OF TRANSPORTATION AND THE SPECIAL PROVISIONS FOR THIS PROJECT. USE STANDARD PLANS DATED MARCH 1977 AND SPECIFICATIONS DATED JANUARY 1978
  - PULL BOXES SHALL BE NO. 5 UNLESS NOTED OTHERWISE.
  - CONDUIT SHALL BE 2" UNLESS NOTED OTHERWISE.
  - FLASHING INDICATIONS SHALL FLASH RED ON ALL PHASES.
  - SIGNAL & LIGHTING SERVICE PER STD. DWGS 612 & 669.

- RAILROAD PRE-EMPTION OPERATION**  
UPON RECEIVING A PRE-EMPTION CALL THE CONTROLLERS SHALL:
- COORDINATION SHALL BE LIFTED.
  - TERMINATE ANY GREEN AND DISPLAY YELLOW CLEARANCE FOR ALL INDICATIONS NOT ASSOC WITH THE GREEN PRE-EMPT. PED. PHASE B AT INDIANA SHALL BE TURNED OFF.
  - NORTHBOUND TYLER STREET AT INDIANA AVE. AND THE FREEWAY RAMP SHALL DISPLAY GREEN (0-30 SECS. ADJUSTABLE). SOUTHBOUND TYLER STREET AT INDIANA AVE. SHALL SHOW RED. ALL OTHER INDICATIONS NOT ASSOCIATED WITH THE GREEN PRE-EMPT SHALL ALL 30 SHOW RED.
  - FOLLOWING THE PRE-EMPTED GREEN ALL PHASE INDICATIONS (INDIANA & FREEWAY INTERSECTIONS) SHALL FLASH RED.
  - AT THE TERMINATION OF THE PRE-EMPTION THE CONTROLLERS SHALL RESUME NORMAL OPERATION IN PHASE C (PLAN X-320), PHASE A (PLAN X-321)
  - COORDINATION SHALL RESUME



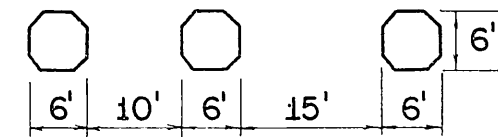
	PREPARED BY: <i>R. H. Mohle</i> DATE: Jan. 31, 1979	DESIGNED BY: J.J.S. DRAWN BY: L.A.T. CHECKED BY: R.H.M.	CITY OF RIVERSIDE, CALIFORNIA DEPARTMENT OF PUBLIC WORKS	TRAFFIC SIGNAL PLAN TYLER AVE. AT INDIANA AVENUE	ACCT. NO. 30-576-397-07 X - 321 SHEET 1 OF 1 FILE NO.
	APPROVED BY: <i>[Signature]</i> DATE: 9/19/79	APPROVED BY: <i>[Signature]</i> DATE: 9/19/79	HORIZ. SCALE: 1" = 20' VERT. SCALE: 1" = 20'		



CONDUCTOR		TABLE						
AWG	CIRCUIT	RUNS						
		1	2	3	4	5	6	7
0 1		3	3	3	3	3	6	
0 2		-	-	-	-	-	6	
0 4		-	3	3	3	3	6	
0 5 (Fut.)								
0 6		3	3	3	3	1	3	
0 2 PED						2	6	
0 4 PED		2	2	2	2	2	4	
0 6 PED		2	2	2	2	2	2	
0 2 FPB						1	3	
0 4 FPB		1	1	1	1	1	4	
0 6 FPB		1	1	2	2	2	2	
SPARES		3	3	3	3	3	6	
TOTAL		12	18	19	23	16	48	
#12	PPB COMMON	1	1	1	1	1	2	
	I.S.N.S.	2	2	2	2	2	2	
	TOTAL	3	3	3	3	3	4	
2 -	0 1 DETECTOR				1		2	
	0 2 DETECTOR					4	4	
#12	0 4		1	1	1		2	
CABLE	0 5 (Fut.)				2		2	
	0 6							
	TOTAL CABLES		1	1	4	4	10	
#8	LUMINAIRE	2	2	2	2	2	2	
#10	SIGNAL COMMON	1	1	1	1	1	2	
#14	PRE-EMPTION	2	2	2	2	2	2	
#10/10	INTERCONNECT CABLE						1	1
	CONDUIT SIZE	2"	2 1/2"	2 1/2"	3"	2 1/2"	2 1/2"	1 1/2"
		(EXIST)	(EXIST)	(EXIST)	(EXIST)	(EXIST)	(EXIST)	(NEW)

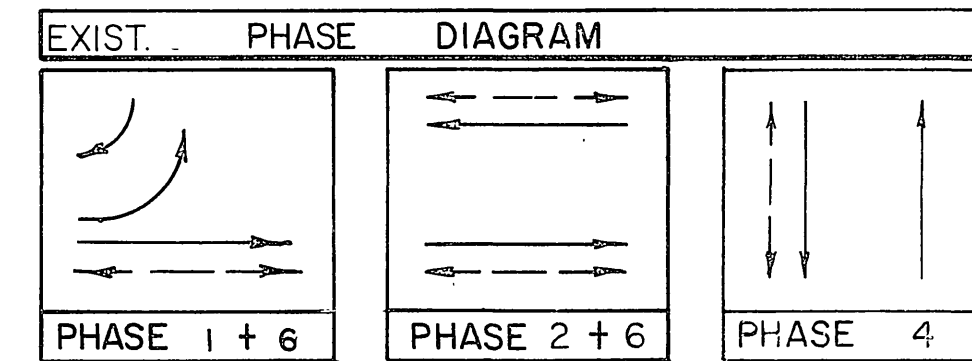
EXISTING SENSOR TABLE		
SENSOR	LOOP	DETECTORS
1	1-N-1	
2	2-N-6	
3	3-N-6	
4	1-S-2	
5	2-S-2	
6	1-E-4	*
7	1-W-4	*
8	2-E-1	*

\* = SENSOR WITH INTEGRAL MIN. 0-30 SECOND ADJUSTABLE DELAY TIMER.

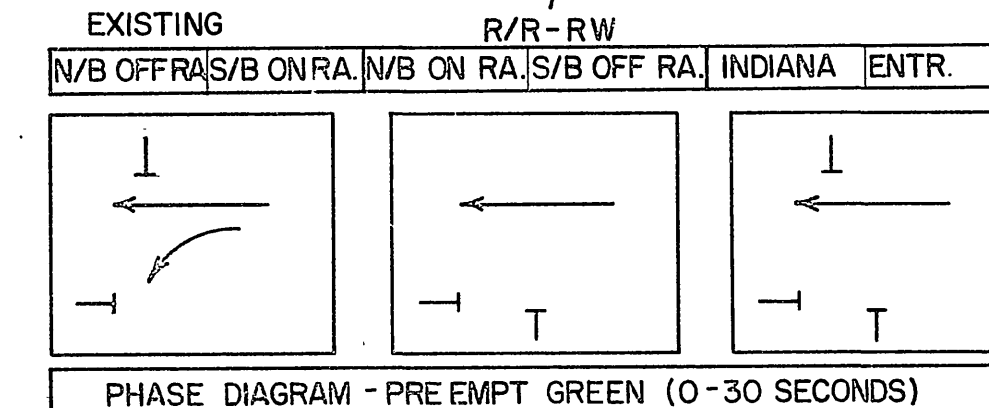
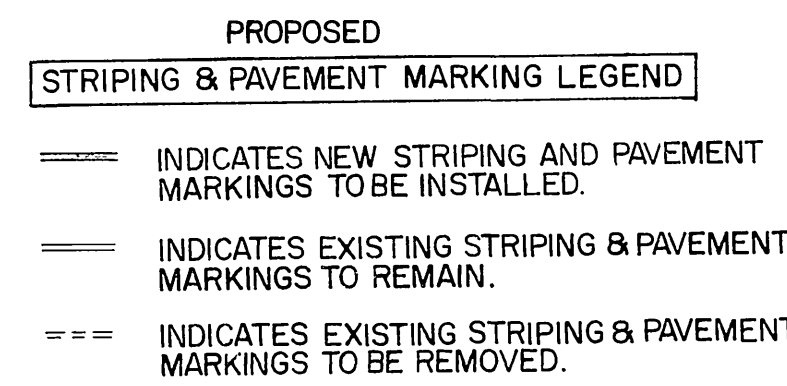
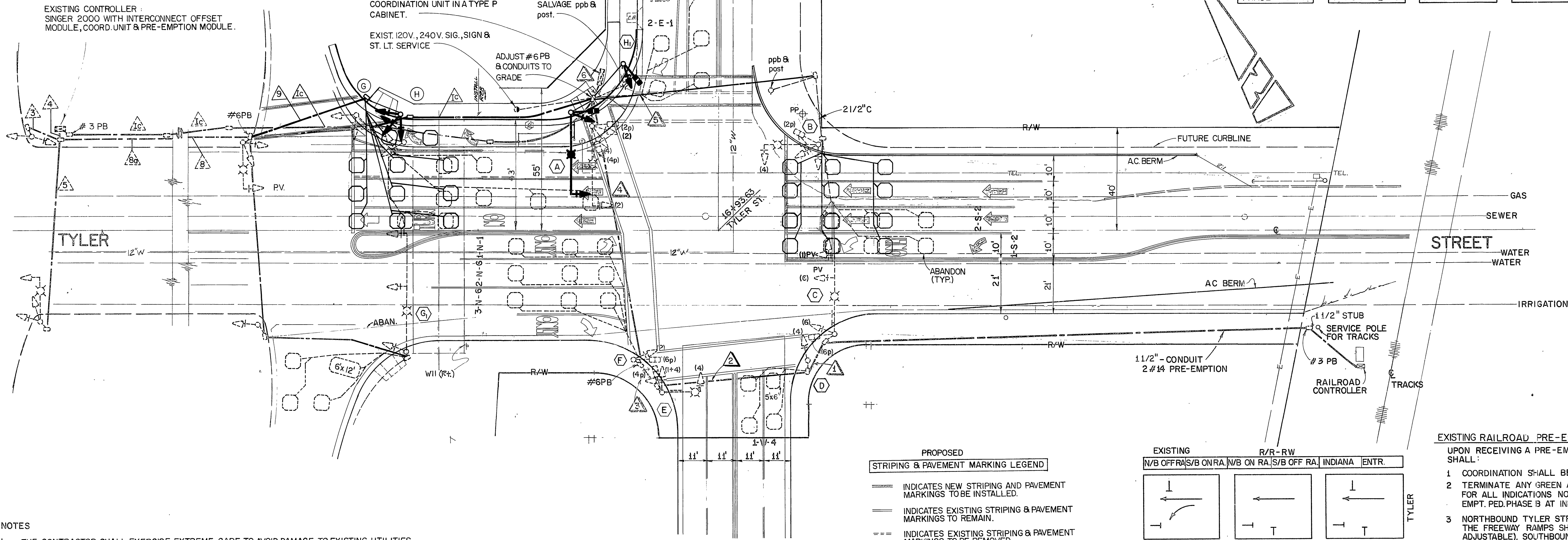
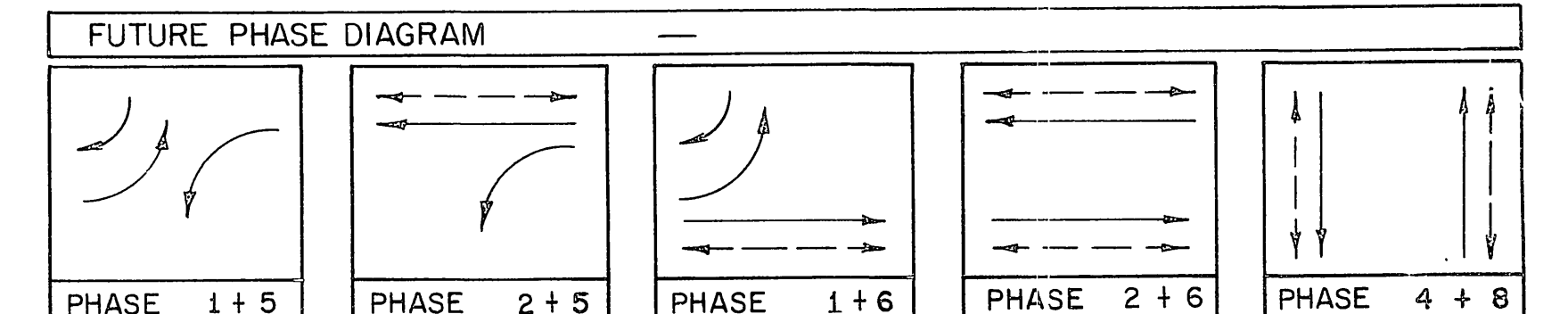


PROPOSED DETECTOR PLACEMENT

POLE		SCHEDULE										
No.	TYPE	STANDARD			LUMINAIRE	I.S.N.S. LEGEND	SIGNAL VEHICLE	MTG. PED	PED. PUSH BTN. TYPE	PHASE	REMARKS	
		HEIGHT	SIG.M.A.	LUM.M.A.								
(A)	19A-4-70	35'	30'	15'	400W.H.P.S.V.	Indiana Ave. 3300	MAS	SV-1-T	SP-1-T	B	4	RELOCATE STD. & EQUIP. AS INDICATED. MODIFY FRAMEWORK.
(B)	17A-2-70	35'	20'	15'	400W.H.P.S.V.	Tyler Ave. 3300	MAS	SV-2-TA	SP-1-T			
(C)	19A-2-70	35'	30'	15'	400W.H.P.S.V.	Indiana Ave. 3300	MAS	SV-1-T	SP-1-T			
(D)	1-A	10'						TV-1-T		B	6	
(E)	17A-2-70	35'	15'	15'	250 W.H.P.S.V.	Tyler Ave. 3400	MAS	SV-1-T	SP-1-T	B	6	
(F)	1-A	10'						TV-1-T	SP-1-T	B	4	
(G)	26-3-70	30'	45'	15'								INSTALL STD. FROM LOC. (C) INSTALL INDICATIONS FROM LOC. (D) MODIFY FRAMEWORK. PROVIDE & INSTALL FPB. SALVAGE FPB & POST.
(H)	1-A	10'						TV-1-T	SP-1-T	B	2	



PHASE 2 IS FOR RR. PRE-EMPTION CLEARANCE (R.R. PRE-EMPTION OPERATION)



- EXISTING RAILROAD PRE-EMPTION OPERATION**
- UPON RECEIVING A PRE-EMPTION CALL THE CONTROLLERS SHALL:
- COORDINATION SHALL BE LIFTED.
  - TERMINATE ANY GREEN AND DISPLAY YELLOW CLEARANCE FOR ALL INDICATIONS NOT ASSOC. WITH THE GREEN PRE-EMPT. PED. PHASE B AT INDIANA SHALL BE TURNED OFF.
  - NORTHBOUND TYLER STREET AT INDIANA AVE. AND THE FREEWAY RAMP SHALL DISPLAY GREEN (0-30 SECS. ADJUSTABLE). SOUTHBOUND TYLER STREET AT INDIANA AVE. SHALL SHOW RED. ALL OTHER INDICATIONS NOT ASSOCIATED WITH THE GREEN PRE-EMPT. SHALL ALSO SHOW RED.
  - FOLLOWING THE PRE-EMPTED GREEN ALL PHASE INDICATIONS (INDIANA & FREEWAY INTERSECTIONS) SHALL FLASH RED.
  - AT THE TERMINATION OF THE PRE-EMPTION THE CONTROLLERS SHALL RESUME NORMAL OPERATION IN PHASE C (PLAN X-320), PHASE A (PLAN X-321).
  - COORDINATION SHALL RESUME.

- NOTES**
- THE CONTRACTOR SHALL EXERCISE EXTREME CARE TO AVOID DAMAGE TO EXISTING UTILITIES.
  - STRIPING SHALL BE DONE BY THE CONTRACTOR.
  - FOR STREET IMPROVEMENTS SEE PLAN R-2486
  - REUSE EXISTING CONDUCTORS UNLESS OTHERWISE NOTED.
  - INSTALL ADDITIONAL PHASE 2 DETECTOR CABLE; 3 EXISTING.
  - LOCATION (H) INSTALL CONDUIT AND NEW CONDUCTORS FROM CONTROLLER CABINET TO POLE.
  - SEE PLAN X-320, SHEET 2, FOR EXISTING CONDUCTORS IN NEW RUN (9)
  - FOR WORK AT LOCATIONS (C) AND (H) SEE PLAN X-320, SHEET 2.

REMOVALS : 140 S.F.  
 INSTALLATION : 536 S.F. PAVEMENT MARKINGS  
 18 L.F. DOUBLE YELLOW  
 375 L.F. 8" BARRIER STRIPE  
 64 L.F. 4" DASHED WHITE

REF DWGS. R-1793, R-2486

PREPARED BY: *R. H. Mohle*  
 DATE: Jan. 31, 1979  
 MOHLE, PERRY & ASSOC. DESIGN ENGR. R.C.E. 10692

CITY OF RIVERSIDE, CALIFORNIA  
 DEPARTMENT OF PUBLIC WORKS

APPROVED BY: \_\_\_\_\_  
 TRAFFIC DIVISION  
 CHIEF P. W. ENGR.

TRAFFIC SIGNAL REVISIONS

**TYLER AVE. AT INDIANA AVENUE**

HORIZ. SCALE: 1" = 20'  
 VERT. SCALE: 1" = 20'

ACCT. NO. 30-575-399-07  
 X-321  
 SHEET 1 OF 1  
 FILE NO.