

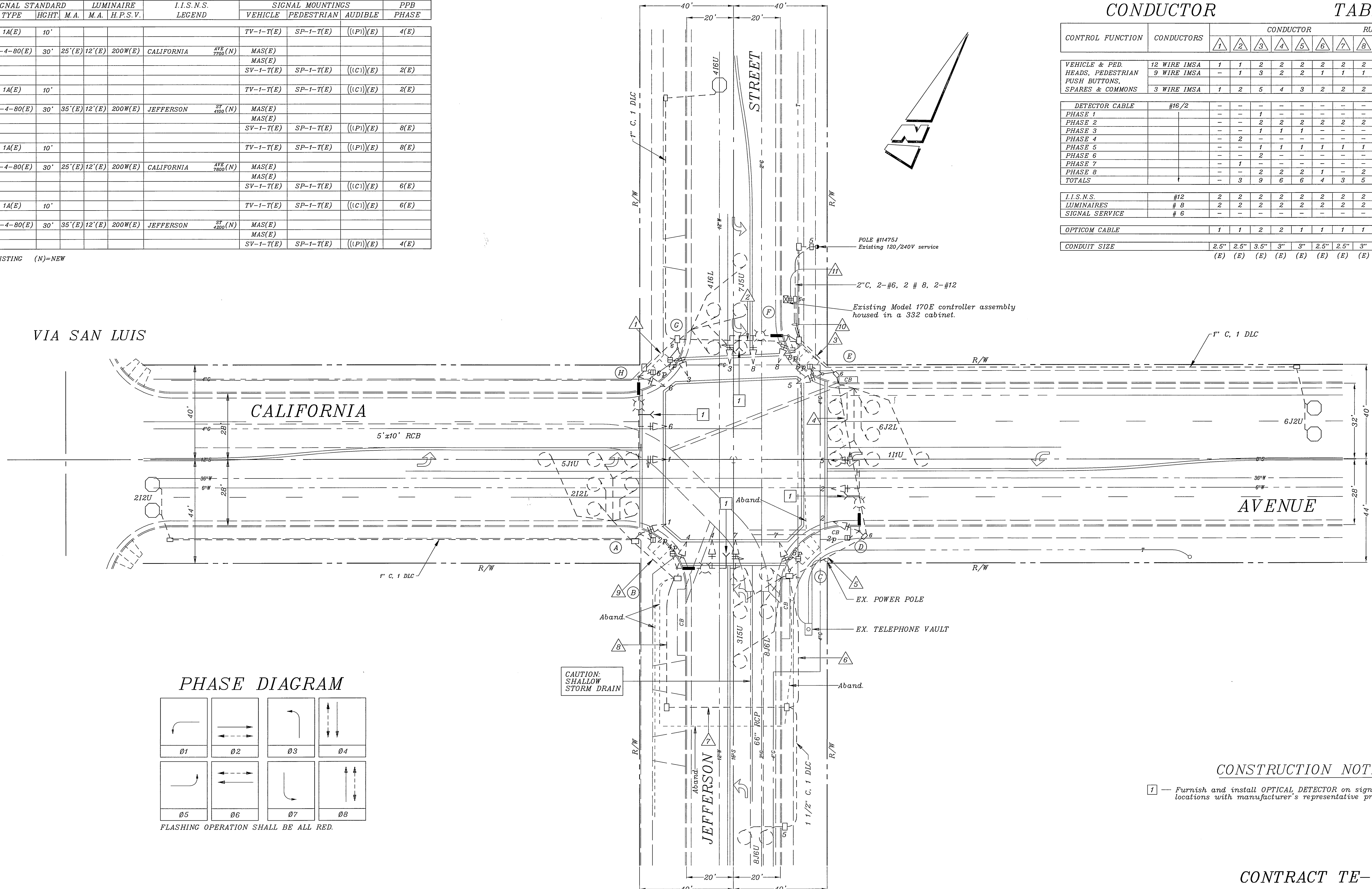
EQUIPMENT SCHEDULE

NO.	SIGNAL STANDARD		LUMINAIRE			I.I.S.N.S. LEGEND	SIGNAL MOUNTINGS			PPB PHASE
	TYPE	HCHT	M.A.	M.A.	H.P.S.V.		VEHICLE	PEDESTRIAN	AUDIBLE	
(A)	1A(E)	10'					TV-1-T(E)	SP-1-T(E)	((P1))(E)	4(E)
(B)	19-4-80(E)	30'	25'(E)	12'(E)	200W(E)	CALIFORNIA	MAS(E)			
							MAS(E)			
							SV-1-T(E)	SP-1-T(E)	((C1))(E)	2(E)
(C)	1A(E)	10'					TV-1-T(E)	SP-1-T(E)	((P1))(E)	2(E)
(D)	24-4-80(E)	30'	35'(E)	12'(E)	200W(E)	JEFFERSON	MAS(E)			
							MAS(E)			
							SV-1-T(E)	SP-1-T(E)	((P1))(E)	8(E)
(E)	1A(E)	10'					TV-1-T(E)	SP-1-T(E)	((P1))(E)	8(E)
(F)	19-4-80(E)	30'	25'(E)	12'(E)	200W(E)	CALIFORNIA	MAS(E)			
							MAS(E)			
							SV-1-T(E)	SP-1-T(E)	((C1))(E)	6(E)
(G)	1A(E)	10'					TV-1-T(E)	SP-1-T(E)	((C1))(E)	6(E)
(H)	24-4-80(E)	30'	35'(E)	12'(E)	200W(E)	JEFFERSON	MAS(E)			
							MAS(E)			
							SV-1-T(E)	SP-1-T(E)	((P1))(E)	4(E)

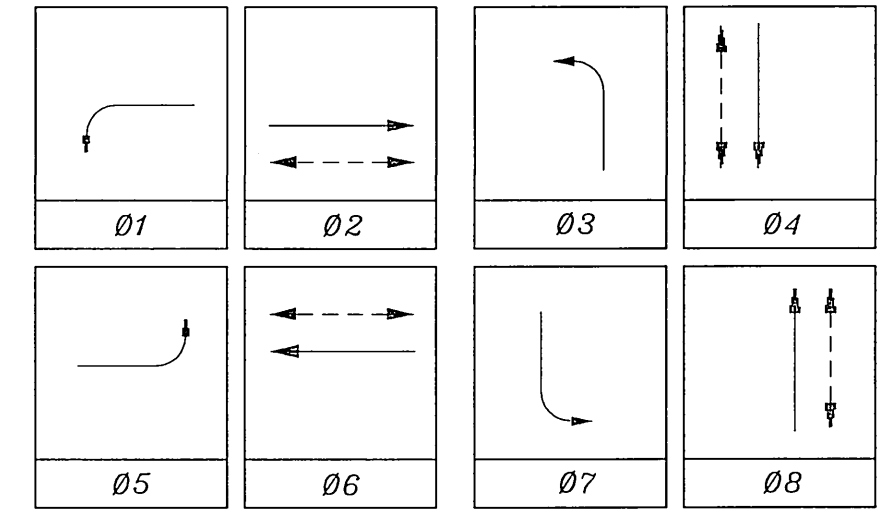
(E)=EXISTING (N)=NEW

CONDUCTOR TABLE

CONTROL FUNCTION	CONDUCTORS	CONDUCTOR RUNS											
		1	2	3	4	5	6	7	8	9	10	11	
VEHICLE & PED.	12 WIRE IMSA	1	1	2	2	2	2	2	2	2	-	4	4
HEADS, PEDESTRIAN	9 WIRE IMSA	-	1	3	2	2	1	1	1	1	1	4	4
PUSH BUTTONS,	3 WIRE IMSA	1	2	5	4	3	2	2	2	1	8	8	
SPARES & COMMONS													
DETECTOR CABLE	#16/2	-	-	-	-	-	-	-	-	-	-	-	-
PHASE 1		-	-	1	-	-	-	-	-	-	-	1	1
PHASE 2		-	-	2	2	2	2	2	2	2	2	2	2
PHASE 3		-	-	1	1	1	-	-	-	-	-	1	1
PHASE 4		-	-	2	-	-	-	-	-	-	-	2	2
PHASE 5		-	-	1	1	1	1	1	1	1	1	1	1
PHASE 6		-	-	2	-	-	-	-	-	-	-	2	2
PHASE 7		-	-	1	-	-	-	-	-	-	-	1	1
PHASE 8		-	-	2	2	2	1	-	2	2	2	2	2
TOTALS		-	-	3	9	6	6	4	3	5	5	12	12
I.I.S.N.S.	#12	2	2	2	2	2	2	2	2	2	-	2	-
LUMINAIRES	# 8	2	2	2	2	2	2	2	2	2	-	2	-
SIGNAL SERVICE	# 6	-	-	-	-	-	-	-	-	-	-	-	2
OPTICOM CABLE		1	1	2	2	1	1	1	1	-	4	4	
CONDUIT SIZE		2.5" (E)	2.5" (E)	3.5" (E)	3" (E)	3" (E)	2.5" (E)	2.5" (E)	3" (E)	3" (E)	2-3" (E)	2-3" (E)	



PHASE DIAGRAM



FLASHING OPERATION SHALL BE ALL RED.

CONSTRUCTION NOTES

1 - Furnish and install OPTICAL DETECTOR on signal mast arm, per detail. Verify locations with manufacturer's representative prior to installing.

CONTRACT TE-01-09

IMPORTANT NOTICE
 Section 4216/4217 of the Government Code requires a Dig Alert identification Number to be issued before a "Permit to Excavate" will be valid. For your Dig Alert ID, Number call CALL TOLL FREE TWO WORKING DAYS BEFORE YOU DIG UNDERGROUND SERVICE ALERT 1-800-227-2600

ENGINEER IN RESPONSIBLE CHARGE
Thomas John Boyd
 THOMAS JOHN BOYD
 R.C.E. No. 36170 expires 6/30/04
 DATE 3/1/02

CITY OF RIVERSIDE, CALIFORNIA
 DEPARTMENT OF PUBLIC WORKS

APPROVED BY	BY	DATE
ENGINEERING MANAGER	<i>Tom Boyd</i>	3/1/02
PRINCIPAL ENGINEER		
P.W. INSPECTION		
TRAFFIC DIVISION		
PUBLIC UTILITIES		

DESIGNED BY MAC DRAWN BY MAC CHECKED BY

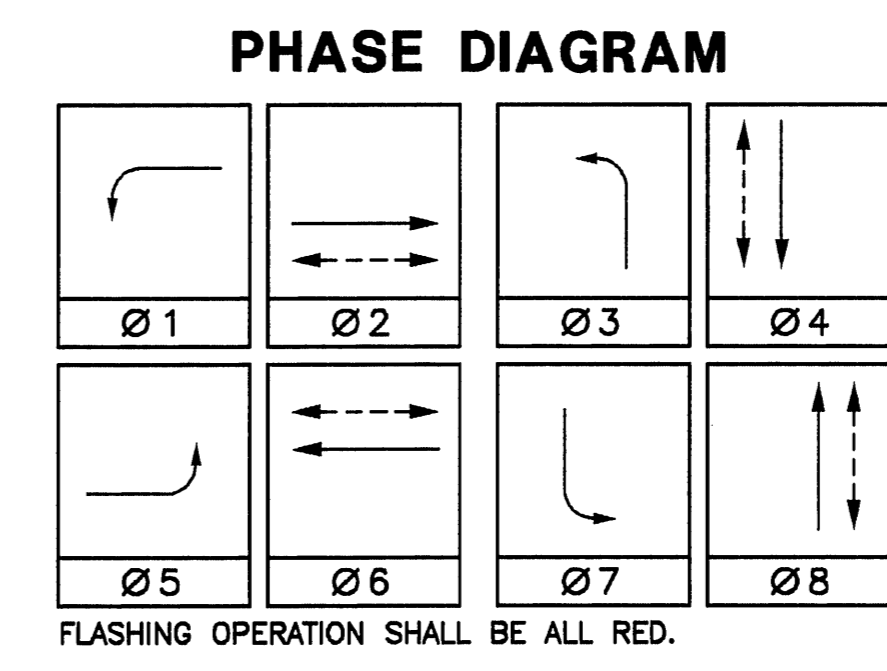
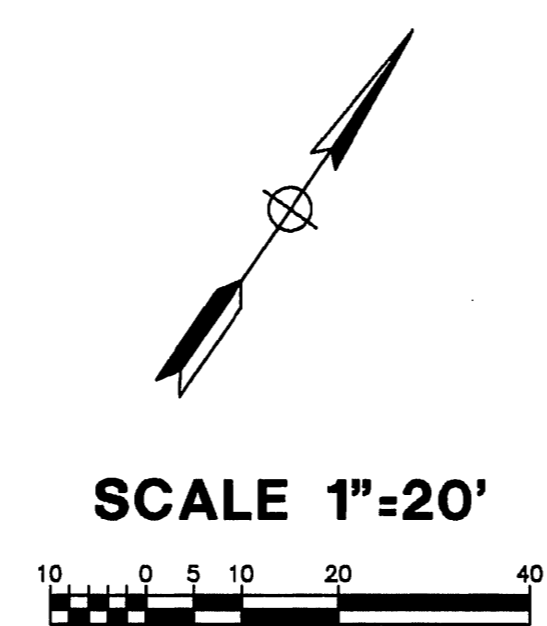
TRAFFIC SIGNAL MODIFICATION
CALIFORNIA AVENUE AND JEFFERSON STREET

ACCT. NO. XXXXXXXXXXX-XXXXXXXX
X-327A
 SHEET 1 OF 1
 FILE NAME: X327A.DWG

SCALE: 1" = 20'

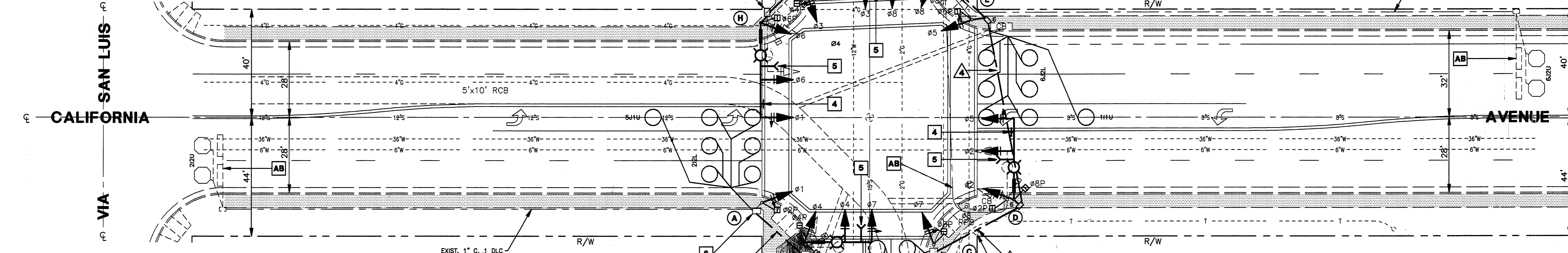
EQUIPMENT		SCHEDULE		SIGNAL STANDARD		LUMINAIRE		I.I.S.N.S. LEGEND		SIGNAL MOUNTINGS		PPB PHASE		REMARKS
NO.	TYPE	HGHT.	M.A.	M.A.	H.P.S.V.	VEHICLE	PEDESTRIAN	AUDIBLE	PPB	PHASE	REMARKS			
(A)	1A(E)	10'				TV-1-T(N)	SP-1-T(E)	((P)) (N)	4(N)					
(B)	19-4-80(N)	30'	25'(N)	12'(N)	200W(N)	MAS(N)								
(C)	1A(E)	10'				TV-1-T(N)	SP-1-T(E)	((C)) (N)	2(N)					
(D)	24-4-80(N)	30'	35'(N)	12'(N)	200W(N)	MAS(N)								
(E)	1A(E)	10'				TV-1-T(N)	SP-1-T(E)	((P)) (N)	8(N)	R/R STEEL POLE W/TYP 1A				
(F)	19-4-80(N)	30'	25'(N)	12'(N)	200W(N)	MAS(N)								
(G)	1A(N)	10'				TV-1-T(N)	SP-1-T(E)	((C)) (N)	6(N)					
(H)	24-4-80(N)	30'	35'(N)	12'(N)	200W(N)	MAS(N)								
						SV-1-T(N)	SP-1-T(N)	((P)) (N)	4(N)	PPB ON EXISTING PPB POST				

- (E)=EXISTING (N)=NEW
- NOTES:**
- ALL VEHICULAR HEADS SHALL HAVE 12" LENSES.
 - ALL LEFT TURN HEADS SHALL HAVE ALL ARROWS.
 - LUMINAIRES SHALL BE HIGH PRESSURE SODIUM VAPOR.
 - ((C)) OR ((P)) INDICATES AUDITORY PEDESTRIAN SIGNAL TO BE INSTALLED. ((C)) INDICATES CUCKOO SOUND; ((P)) INDICATES PEEP-PEEP SOUND.
 - PEDESTRIAN PUSH BUTTONS SHALL BE INSTALLED ON THE POLE IN THE QUADRANT NEAREST THE CROSSWALK SERVING THE PHASE. R/R W/ADA BUTTONS.
 - FOUNDATIONS NOT TO BE REUSED SHALL BE COMPLETELY REMOVED.



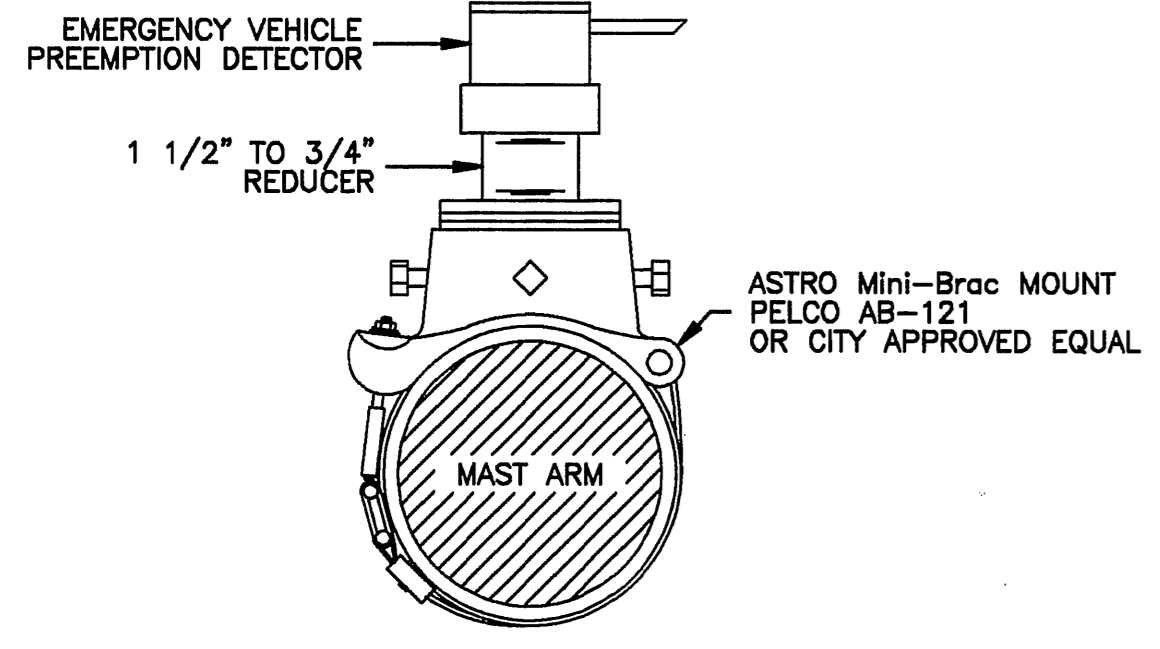
CONDUCTOR		TABLE																			
CONTROL FUNCTION	CONDUCTORS	CONDUCTOR RUNS																			
		1	2	3	4	5	6	7	8	9	10	11									
VEHICLE & PEDESTRIAN HEADS, PEDESTRIAN PUSH BUTTONS, SPARES & COMMONS	12 WIRE IMSA	1	1	2	2	2	2	2	2	2	2	2	2	2	2	2	2	2	2	2	2
	9 WIRE IMSA	-	1	3	2	2	2	1	1	1	1	1	1	1	1	1	1	1	1	1	1
	3 WIRE IMSA	1	2	5	4	3	2	2	2	2	2	1	8	8							
DETECTOR CABLE	#16/2	-	-	-	-	-	-	-	-	-	-	-	-	-	-	-	-	-	-	-	-
PHASE 1		-	-	1	-	-	-	-	-	-	-	-	-	-	-	-	-	-	-	-	-
PHASE 2		-	-	2	2	2	2	2	2	2	2	2	2	2	2	2	2	2	2	2	2
PHASE 3		-	-	1	1	1	-	-	-	-	-	-	-	-	-	-	-	-	-	-	-
PHASE 4		-	-	2	-	-	-	-	-	-	-	-	-	-	-	-	-	-	-	-	-
PHASE 5		-	-	1	1	1	1	1	1	1	1	1	1	1	1	1	1	1	1	1	1
PHASE 6		-	-	2	-	-	-	-	-	-	-	-	-	-	-	-	-	-	-	-	-
PHASE 7		-	-	1	-	-	-	-	-	-	-	-	-	-	-	-	-	-	-	-	-
PHASE 8		-	-	2	2	2	2	2	2	2	2	2	2	2	2	2	2	2	2	2	2
TOTALS		-	-	3	9	6	6	4	3	5	5	12	12								
I.I.S.N.S.	#12	2	2	2	2	2	2	2	2	2	2	2	2	2	2	2	2	2	2	2	2
LUMINAIRES	#8	2	2	2	2	2	2	2	2	2	2	2	2	2	2	2	2	2	2	2	2
SIGNAL SERVICE	#6	2	2	2	2	2	2	2	2	2	2	2	2	2	2	2	2	2	2	2	2
OPTICOM CABLE		1	1	2	2	1	1	1	1	1	1	1	1	1	1	1	1	1	1	1	1
CONDUIT SIZE		2.5"	2.5"	3.5"	3"	3"	2.5"	2.5"	3"	3"	3"	2-3"	2-3"								

NOTE:
SIGNAL SYSTEM SHALL HAVE ALL NEW CONDUITS, CABLES AND CONDUCTORS (EXCEPT WHERE NOTED ON THE PLAN); SEE CONTRACT SPECIAL PROVISIONS FOR ADDITIONAL INFORMATION ON I.M.S.A. CABLE. WHERE 9 WIRE I.M.S.A. CABLE IS SHOWN, THE CONTRACTOR MAY USE 12 WIRE I.M.S.A. CABLE INSTEAD.

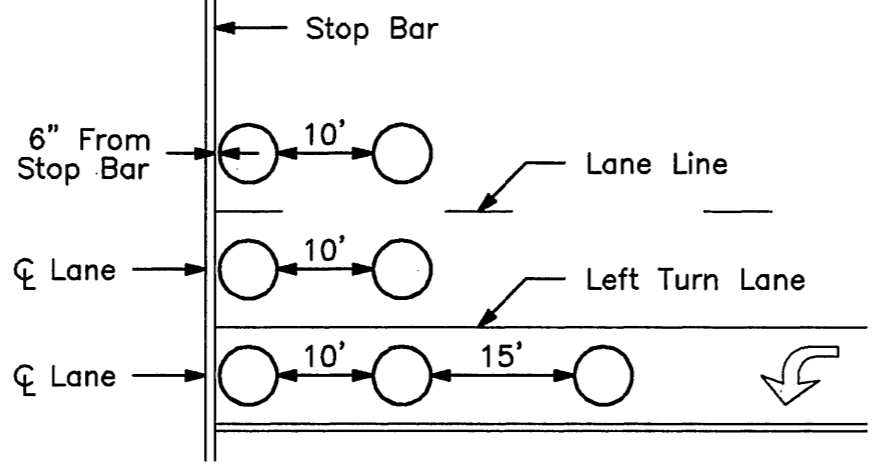


CONSTRUCTION NOTES

- Furnish and install MODEL 170 Controller Assembly in a TYPE 332 cabinet. See Special Provisions.
 - Remove and salvage existing controller assembly and cabinet. The Contractor shall deliver the salvaged controller and cabinet to City of Riverside Maintenance yard, 8095A Lincoln Avenue.
 - Remove existing pole and equipment. Marbelite poles shall become the property of the Contractor. The Contractor shall deliver 1A poles and equipment to the City of Riverside Maintenance yard, 8095A Lincoln Avenue.
 - Furnish and install R73-3 sign (36"x36") on signal mast arm per CALTRANS Standard Plan ES-6T, Detail U.
 - Furnish and install OPTICAL DETECTOR on signal mast arm per detail. Verify locations with manufacturer's representative prior to installing.
 - Remove existing pull box. Furnish and install new pull box.
- * Abandon existing conduit run. Furnish and install new conduit run per CONDUCTOR TABLE.



MAST-ARM MOUNTING CLAMP FOR OPTICAL DETECTOR



Loops shall be 6' diameter, centered in interior lanes, and installed 3' from lane lines in outside lanes

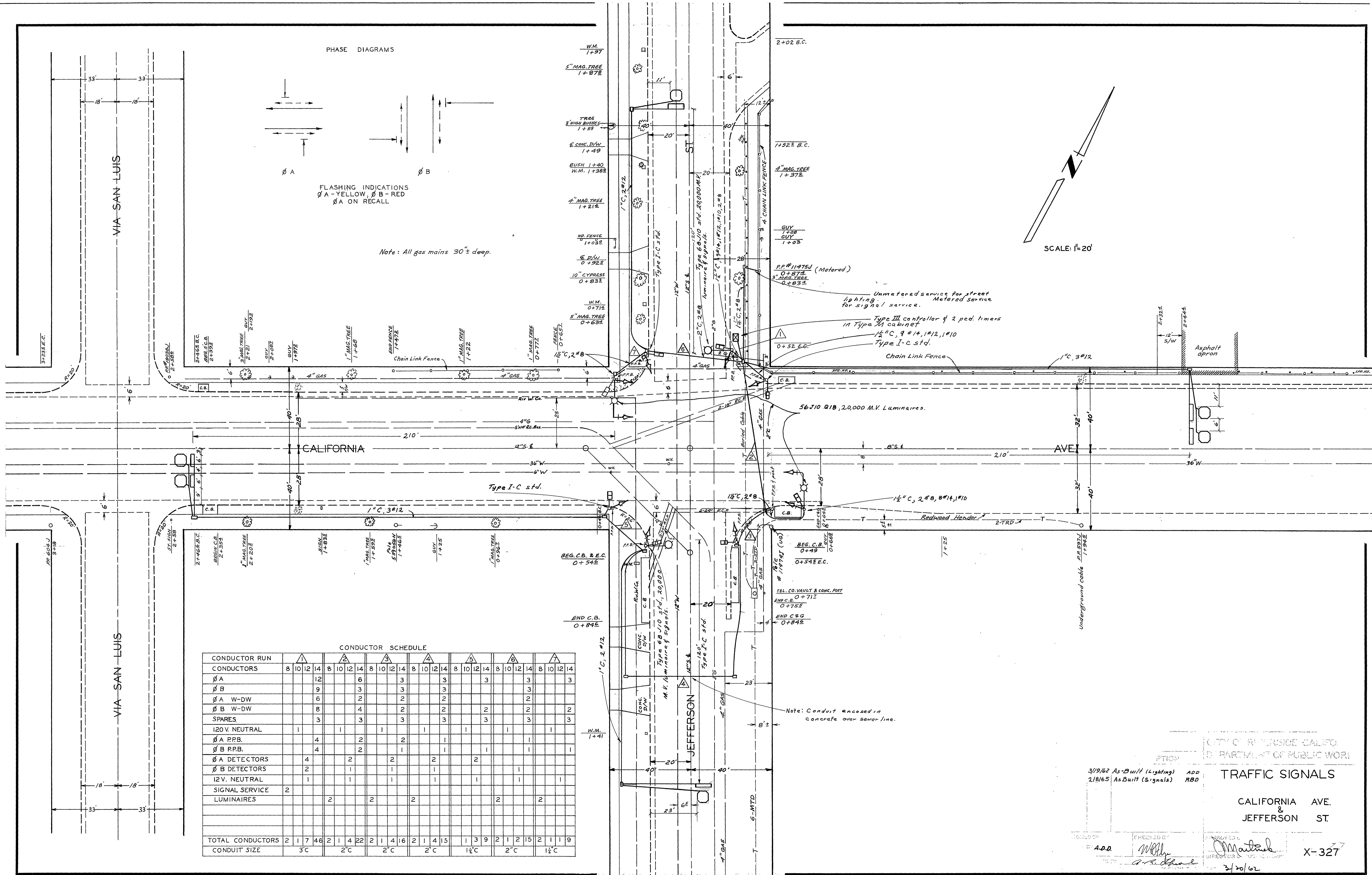
DETECTOR LOOP INSTALLATION DETAIL

GENERAL NOTES

- All work and material shall conform to the State of California Standard Plans and Standard Specifications dated July 1992 and the Special Provisions for this project.
- Detector loops shall be installed in the presence of the Traffic Engineer or his representative.
- The Traffic Engineer shall approve pole and conduit locations prior to installation by Contractor.
- Pull boxes shall be No. 5 unless otherwise noted or approved by the Traffic Engineer.
- This plan accurate for traffic signal work only.
- Call (909) 351-6096 at least 48 hours in advance for inspection.
- Call UNDERGROUND SERVICE ALERT (USA) 1-800-227-2600 at least 2 working days prior to excavation.
- The private engineer signing the plan is responsible for assuring the accuracy and acceptability of the work hereon. In the event of discrepancies arising during construction, the private engineer shall be responsible for determining an acceptable solution and revising the plan for approval by the City.
- See City of Riverside Plan N, XL-43B for pavement delineation work. All pavement delineation work shall be performed by City of Riverside forces.

CONTRACT TE-99-4

	<p>IMPORTANT NOTICE: Section 416/417 of the Government Code requires a City Alert Identification Number to be issued before a 'Threat to Lives' will be valid. For your City Alert I.D. Number call: CALL TOLL FREE 1-800-227-2600</p>	<p>PRIVATE ENGINEERING NOTE CONTRACTOR AGREES THAT IN ACCORDANCE WITH GENERALLY ACCEPTED CONSTRUCTION PRACTICES, CONSTRUCTION CONTRACTOR WILL BE REQUIRED TO ASSUME SOLE AND COMPLETE RESPONSIBILITY FOR JOB SITE CONDITIONS DURING THE COURSE OF CONSTRUCTION OF THE PROJECT, INCLUDING SAFETY OF ALL PERSONS AND PROPERTY. THAT THIS REQUIREMENT SHALL BE MADE TO APPLY CONTINUOUSLY AND NOT BE LIMITED TO NORMAL WORKING HOURS, AND HOLD DESIGN PROFESSIONAL HARMLESS FROM ANY AND ALL LIABILITY, REAL OR ALLEGED, IN CONNECTION WITH THE PERFORMANCE OF WORK ON THIS PROJECT, EXCEPTING LIABILITY ARISING FROM THE SOLE NEGLIGENCE OF DESIGN PROFESSIONAL.</p>	<p>ENGINEER IN RESPONSIBLE CHARGE: <i>Lawrence S. Eisenhart</i> LAWRENCE S. EISENHART RCE NO. 13493 EXPIRATION DATE: 3-31-01 DATE: 2-18-00</p>	<p>LAWRENCE S. EISENHART CONSULTING ENGINEER 2070 Locust Court San Bernardino, California 92404 Tel: (909) 864-5406 Fax: (909) 864-5047</p>	<p>CITY OF RIVERSIDE, CALIFORNIA DEPARTMENT OF PUBLIC WORKS</p>	<p>TRAFFIC SIGNAL MODIFICATION PLAN CALIFORNIA AVENUE and JEFFERSON STREET</p>	<p>ACCT. NO. 430-541600-440303-35101 X-327 SHEET 1 OF 1 FILE NAME: X327.DWG</p>
	<p>SCALE: AS SHOWN DATE: DEC. 1998</p>	<p>APPROVED BY: <i>[Signature]</i> DATE: 3/10/00 PRINCIPLE ENGINEER P.W. INSPECTION TRAFFIC DIVISION CHIEF P.W. ENGINEER</p>	<p>APPROVED BY: <i>[Signature]</i> DATE: 3-28-00 DIRECTOR OF PUBLIC WORKS</p>				



CONDUCTOR SCHEDULE

CONDUCTOR RUN	CONDUCTOR SCHEDULE																											
CONDUCTORS	8	10	12	14	8	10	12	14	8	10	12	14	8	10	12	14	8	10	12	14	8	10	12	14				
Ø A			12				6				3				3				3				3					
Ø B			9				3				3				3				3				3					
Ø A W-DW			6				2				2				2				2				2					
Ø B W-DW			8				4				2				2				2				2					
SPARES			3				3				3				3				3				3					
120 V. NEUTRAL			1				1				1				1				1				1					
Ø A P.R.B.			4				2				1				1				1				1					
Ø B P.R.B.			4				2				1				1				1				1					
Ø A DETECTORS			4				2				2				2				2				2					
Ø B DETECTORS			2				1				1				1				1				1					
12V. NEUTRAL			1				1				1				1				1				1					
SIGNAL SERVICE			2				1				1				1				1				1					
LUMINAIRES							2				2				2				2				2					
TOTAL CONDUCTORS	2	1	7	46	2	1	4	22	2	1	4	16	2	1	4	15	1	3	9		2	1	2	15	2	1	1	9
CONDUIT SIZE			3" C				2" C				2" C				1 1/2" C				2" C				1 1/2" C				1 1/2" C	

CITY OF RIVERSIDE CALIF. DEPARTMENT OF PUBLIC WORKS

TRAFFIC SIGNALS

CALIFORNIA AVE. & JEFFERSON ST

3/19/62 As-Built (Lighting) ADD
 2/18/65 As-Built (Signals) RBD

CHECKED BY: [Signature]
 APPROVED BY: [Signature]

DATE: 2/20/62

X-327