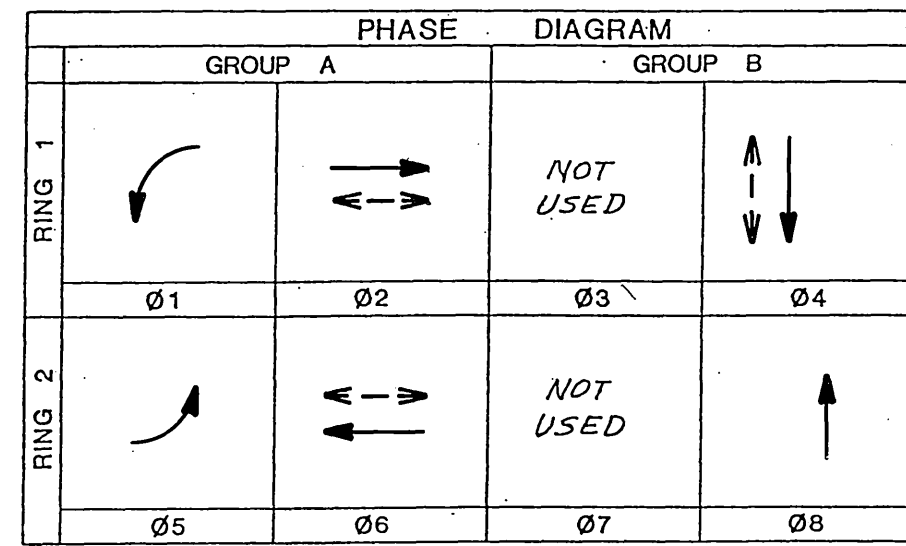


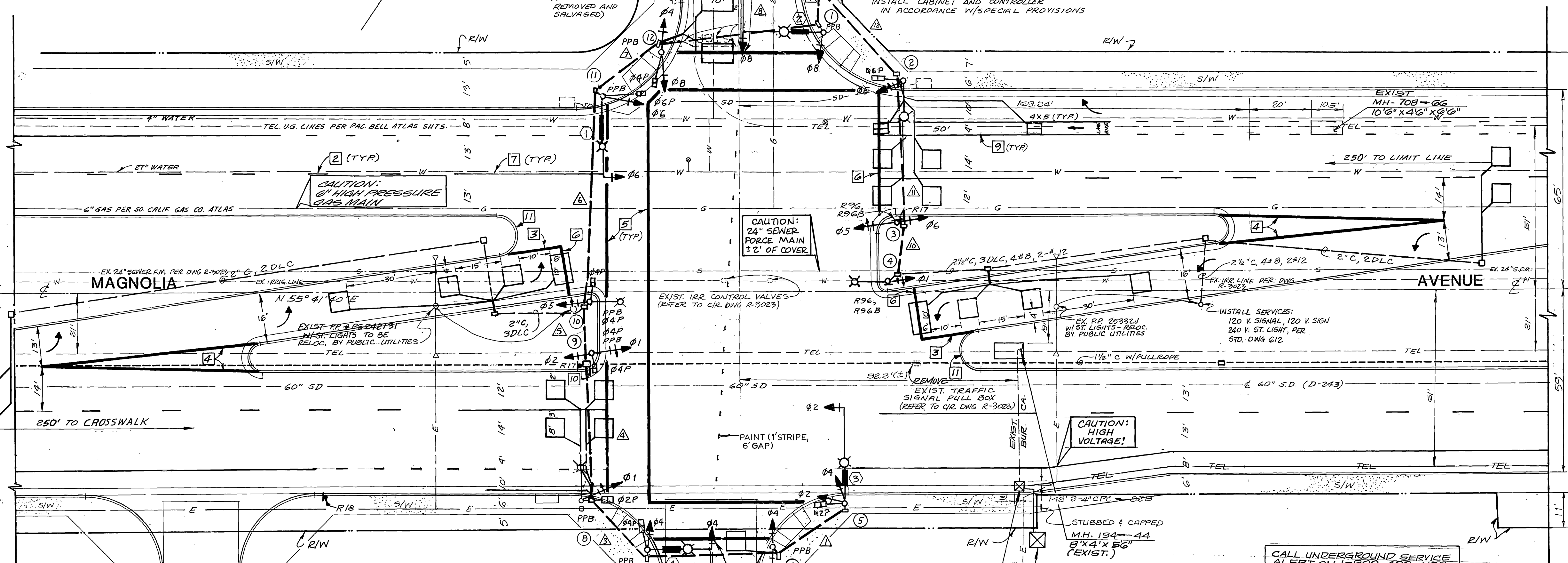
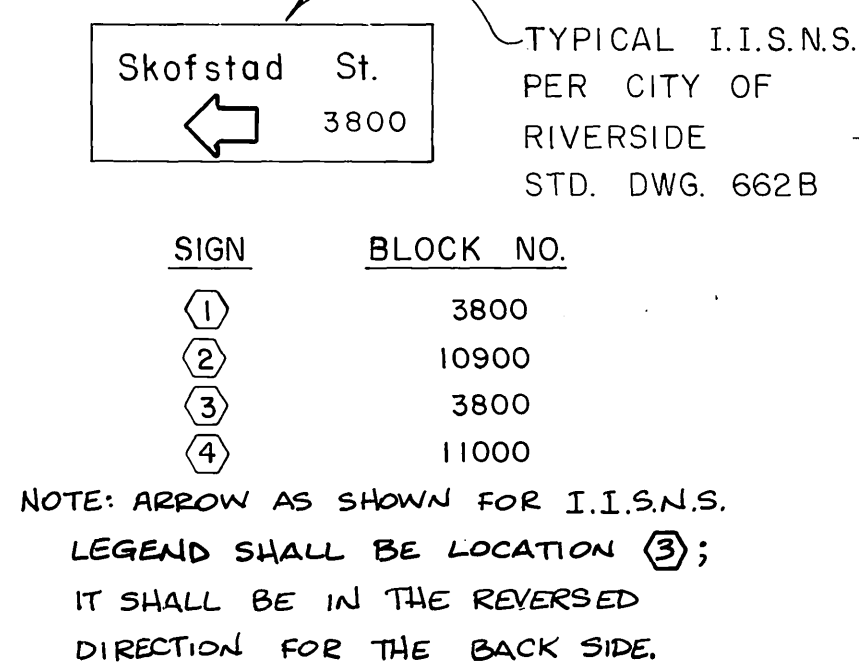
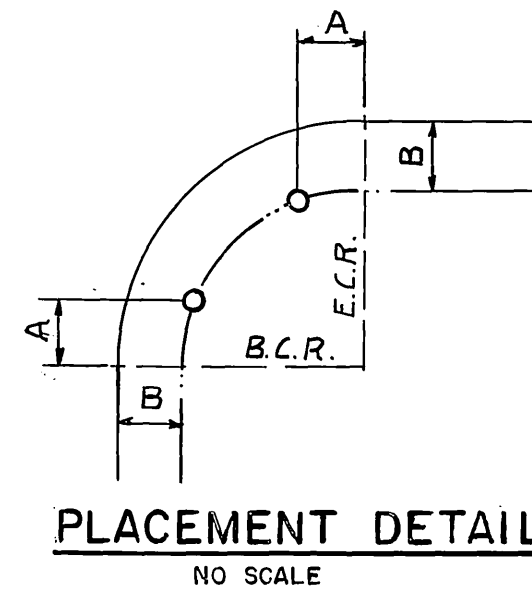
| AWG | CIRCUIT | CONDUCTOR SCHEDULE | | SCHEDULE | |
|------|---------|--------------------|---------|----------|---------|
| | | GROUP A | GROUP B | GROUP A | GROUP B |
| Ø1 | 1 | 3 | 3 | 3 | 3 |
| Ø2 | 2 | 3 | 3 | 3 | 3 |
| Ø3 | 3 | 3 | 3 | 3 | 3 |
| Ø4 | 4 | 3 | 3 | 3 | 3 |
| Ø5 | 5 | 3 | 3 | 3 | 3 |
| Ø6 | 6 | 3 | 3 | 3 | 3 |
| Ø7 | 7 | 3 | 3 | 3 | 3 |
| Ø8 | 8 | 3 | 3 | 3 | 3 |
| Ø9 | 9 | 3 | 3 | 3 | 3 |
| Ø10 | 10 | 3 | 3 | 3 | 3 |
| Ø11 | 11 | 3 | 3 | 3 | 3 |
| Ø12 | 12 | 3 | 3 | 3 | 3 |
| Ø13 | 13 | 3 | 3 | 3 | 3 |
| Ø14 | 14 | 3 | 3 | 3 | 3 |
| Ø15 | 15 | 3 | 3 | 3 | 3 |
| Ø16 | 16 | 3 | 3 | 3 | 3 |
| Ø17 | 17 | 3 | 3 | 3 | 3 |
| Ø18 | 18 | 3 | 3 | 3 | 3 |
| Ø19 | 19 | 3 | 3 | 3 | 3 |
| Ø20 | 20 | 3 | 3 | 3 | 3 |
| Ø21 | 21 | 3 | 3 | 3 | 3 |
| Ø22 | 22 | 3 | 3 | 3 | 3 |
| Ø23 | 23 | 3 | 3 | 3 | 3 |
| Ø24 | 24 | 3 | 3 | 3 | 3 |
| Ø25 | 25 | 3 | 3 | 3 | 3 |
| Ø26 | 26 | 3 | 3 | 3 | 3 |
| Ø27 | 27 | 3 | 3 | 3 | 3 |
| Ø28 | 28 | 3 | 3 | 3 | 3 |
| Ø29 | 29 | 3 | 3 | 3 | 3 |
| Ø30 | 30 | 3 | 3 | 3 | 3 |
| Ø31 | 31 | 3 | 3 | 3 | 3 |
| Ø32 | 32 | 3 | 3 | 3 | 3 |
| Ø33 | 33 | 3 | 3 | 3 | 3 |
| Ø34 | 34 | 3 | 3 | 3 | 3 |
| Ø35 | 35 | 3 | 3 | 3 | 3 |
| Ø36 | 36 | 3 | 3 | 3 | 3 |
| Ø37 | 37 | 3 | 3 | 3 | 3 |
| Ø38 | 38 | 3 | 3 | 3 | 3 |
| Ø39 | 39 | 3 | 3 | 3 | 3 |
| Ø40 | 40 | 3 | 3 | 3 | 3 |
| Ø41 | 41 | 3 | 3 | 3 | 3 |
| Ø42 | 42 | 3 | 3 | 3 | 3 |
| Ø43 | 43 | 3 | 3 | 3 | 3 |
| Ø44 | 44 | 3 | 3 | 3 | 3 |
| Ø45 | 45 | 3 | 3 | 3 | 3 |
| Ø46 | 46 | 3 | 3 | 3 | 3 |
| Ø47 | 47 | 3 | 3 | 3 | 3 |
| Ø48 | 48 | 3 | 3 | 3 | 3 |
| Ø49 | 49 | 3 | 3 | 3 | 3 |
| Ø50 | 50 | 3 | 3 | 3 | 3 |
| Ø51 | 51 | 3 | 3 | 3 | 3 |
| Ø52 | 52 | 3 | 3 | 3 | 3 |
| Ø53 | 53 | 3 | 3 | 3 | 3 |
| Ø54 | 54 | 3 | 3 | 3 | 3 |
| Ø55 | 55 | 3 | 3 | 3 | 3 |
| Ø56 | 56 | 3 | 3 | 3 | 3 |
| Ø57 | 57 | 3 | 3 | 3 | 3 |
| Ø58 | 58 | 3 | 3 | 3 | 3 |
| Ø59 | 59 | 3 | 3 | 3 | 3 |
| Ø60 | 60 | 3 | 3 | 3 | 3 |
| Ø61 | 61 | 3 | 3 | 3 | 3 |
| Ø62 | 62 | 3 | 3 | 3 | 3 |
| Ø63 | 63 | 3 | 3 | 3 | 3 |
| Ø64 | 64 | 3 | 3 | 3 | 3 |
| Ø65 | 65 | 3 | 3 | 3 | 3 |
| Ø66 | 66 | 3 | 3 | 3 | 3 |
| Ø67 | 67 | 3 | 3 | 3 | 3 |
| Ø68 | 68 | 3 | 3 | 3 | 3 |
| Ø69 | 69 | 3 | 3 | 3 | 3 |
| Ø70 | 70 | 3 | 3 | 3 | 3 |
| Ø71 | 71 | 3 | 3 | 3 | 3 |
| Ø72 | 72 | 3 | 3 | 3 | 3 |
| Ø73 | 73 | 3 | 3 | 3 | 3 |
| Ø74 | 74 | 3 | 3 | 3 | 3 |
| Ø75 | 75 | 3 | 3 | 3 | 3 |
| Ø76 | 76 | 3 | 3 | 3 | 3 |
| Ø77 | 77 | 3 | 3 | 3 | 3 |
| Ø78 | 78 | 3 | 3 | 3 | 3 |
| Ø79 | 79 | 3 | 3 | 3 | 3 |
| Ø80 | 80 | 3 | 3 | 3 | 3 |
| Ø81 | 81 | 3 | 3 | 3 | 3 |
| Ø82 | 82 | 3 | 3 | 3 | 3 |
| Ø83 | 83 | 3 | 3 | 3 | 3 |
| Ø84 | 84 | 3 | 3 | 3 | 3 |
| Ø85 | 85 | 3 | 3 | 3 | 3 |
| Ø86 | 86 | 3 | 3 | 3 | 3 |
| Ø87 | 87 | 3 | 3 | 3 | 3 |
| Ø88 | 88 | 3 | 3 | 3 | 3 |
| Ø89 | 89 | 3 | 3 | 3 | 3 |
| Ø90 | 90 | 3 | 3 | 3 | 3 |
| Ø91 | 91 | 3 | 3 | 3 | 3 |
| Ø92 | 92 | 3 | 3 | 3 | 3 |
| Ø93 | 93 | 3 | 3 | 3 | 3 |
| Ø94 | 94 | 3 | 3 | 3 | 3 |
| Ø95 | 95 | 3 | 3 | 3 | 3 |
| Ø96 | 96 | 3 | 3 | 3 | 3 |
| Ø97 | 97 | 3 | 3 | 3 | 3 |
| Ø98 | 98 | 3 | 3 | 3 | 3 |
| Ø99 | 99 | 3 | 3 | 3 | 3 |
| Ø100 | 100 | 3 | 3 | 3 | 3 |



FLASHING INDICATION: ALL RED.
PEDESTRIAN HEADS DARK

SCALE: 1" = 20'

| NO | STANDARD | | LUM. | PUSH BT. | SIGNAL MOUNTING | IS.N.S. | MESSAGE | | PLACEMENT | | | |
|----|----------|-----|------|----------|-----------------|---------|---------|--------------|---------------|----------------|-----|-----|
| | TYPE | HT. | | | | | A | B | | | | |
| 1 | 19-Z-BD | 30 | 25 | 12 | 200 W | B 6 | 56 | MAS. SV-1-T | MAGNOLIA 1000 | 16 | 2.5 | |
| 2 | 15 | 30 | - | - | 250 W | - | - | SV-1-T | SP-I-T | - | 2.5 | |
| 3 | IA | 10 | - | - | - | - | - | SV-1-T | - | Ø | 2.5 | |
| 4 | 15 | 30 | - | - | 250 W | - | - | SV-1-T | - | Ø | 2.5 | |
| 5 | 19-Z-BD | 30 | 30 | 12 | 250 W | - | - | MAS. SV-2-TB | SKOFSTAD 3800 | Ø | 2.5 | |
| 6 | IA | 10 | - | - | - | B 2 | NW | TV-2-T | - | - | 2.5 | |
| 7 | 17-Z-90 | 30 | 20 | 12 | 200 W | B 2 | NW | MAS. SV-1-T | SP-I-T | MAGNOLIA 11000 | 12 | 2.5 |
| 8 | 6B-J-10E | 28 | - | - | 250 W | B 4 | NE | SV-1-T | SP-I-T | - | (E) | (E) |
| 9 | IA | 10 | - | - | - | B 4 | NE | TV-2-T | SP-I-T | - | 2.5 | |
| 10 | 15 | 30 | - | - | 250 W | B 4 | NE | SV-1-T | SP-I-T | - | 2.5 | |
| 11 | 19-Z-BD | 30 | 25 | 12 | 250 W | B 4 | NE | MAS. SV-1-T | SP-I-T | SKOFSTAD 3800 | 7 | 2.5 |
| 12 | IA | 10 | - | - | - | B 6 | SE | TV-2-T | SP-I-T | - | 16 | 2.5 |

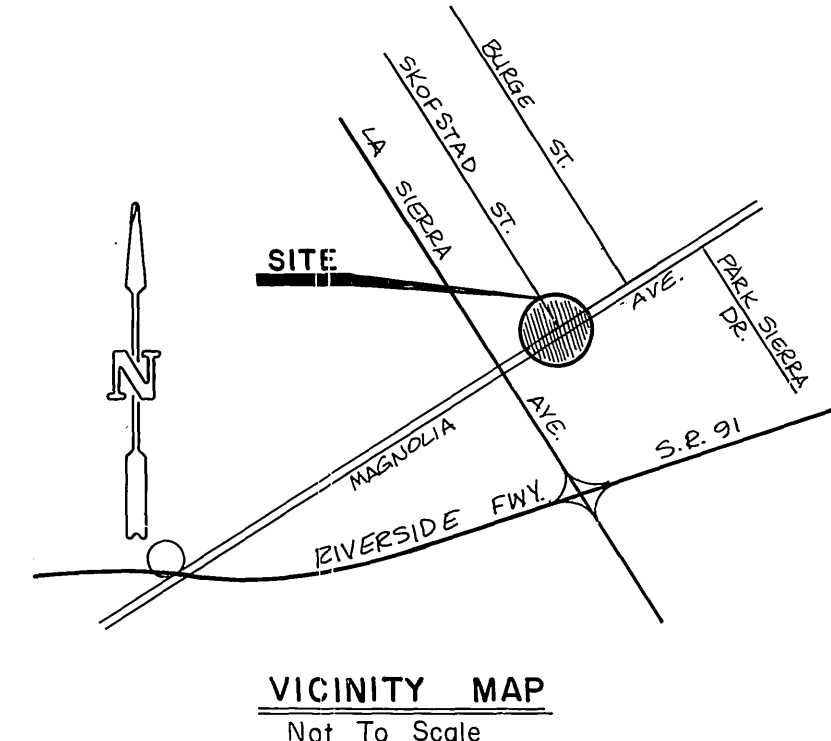


HOLD HARMLESS AND INDEMNIFICATION CLAUSE
CONSTRUCTION CONTRACTOR AGREES THAT IN ACCORDANCE WITH GENERALLY ACCEPTED CONSTRUCTION PRACTICES, CONSTRUCTION CONTRACTOR WILL BE REQUIRED TO ASSUME SOLE AND COMPLETE RESPONSIBILITY FOR JOB SITE CONDITIONS DURING THE COURSE OF CONSTRUCTION OF THE PROJECT INCLUDING SAFETY OF ALL PERSONS AND PROPERTY THAT THIS REQUIREMENT SHALL BE MADE TO APPLY CONTINUOUSLY AND NOT BE LIMITED TO NORMAL WORKING HOURS AND CONSTRUCTION CONTRACTOR FURTHER AGREES TO DEFEND, INDEMNIFY AND HOLD DESIGN PROFESSIONAL HARMLESS FROM ANY AND ALL LIABILITY, REAL OR ALLEGED, IN CONNECTION WITH THE PERFORMANCE OF WORK ON THIS PROJECT, EXCEPTING LIABILITY ARISING FROM THE SOLE NEGLIGENCE OF DESIGN PROFESSIONAL.

II. COSTS FOR SERVICE CONNECTION WORK AND MATERIALS SHALL BE BILLED TO THE CONTRACTOR BY THE CITY OF RIVERSIDE PUBLIC UTILITIES DEPARTMENT.

- GENERAL NOTES**
- TRAFFIC SIGNALS AND LIGHTING SHALL CONFORM TO STATE OF CALIFORNIA STANDARD PLANS AND STANDARD SPECIFICATIONS SECTION 96 DATED JANUARY 1988, AND THESE SPECIAL PROVISIONS.
 - TRAFFIC SIGNS SHALL CONFORM TO CALTRANS STANDARD SIGN SPECIFICATIONS, PAVEMENT STRIPING AND MARKINGS TO STANDARD PLANS A20-A,B,C, TRAFFIC MANUAL FIG. 6-33, AND THIS PLAN.
 - LOCATION OF ALL EXISTING UNDERGROUND UTILITIES IS APPROXIMATE; CONTRACTOR SHALL DETERMINE EXACT LOCATIONS AND VERIFY ALL CONDITIONS ON JOB SITE. PHONE UNDERGROUND SERVICE ALERT AT (800) 422-4133.
 - OBTAIN APPROVAL FROM CITY TRAFFIC ENGINEER OR REPRESENTATIVE FOR EXACT EQUIPMENT LOCATION PRIOR TO FINAL PLACEMENTS.
 - STRIPING SHALL BE LAYED OUT AND APPROVED PRIOR TO LOOP DETECTOR INSTALLATION.
 - THIS PLAN IS ACCURATE FOR TRAFFIC SIGNALS ONLY. REFER TO CITY OF RIVERSIDE DRAWING R-3023 FOR IMPROVEMENTS.
 - LOOP DETECTORS SHALL BE TYPE A, 6' X 6', CENTERED IN LANE EXCEPT AS SHOWN OTHERWISE. LEAD LOOP SHALL EXTEND 2' INTO CROSSWALK OR BEYOND LIMIT LINE.
 - LEFT TURN SIGNAL DISPLAYS SHALL BE ALL ARROWS.
 - A STREET OPENING PERMIT IS REQUIRED FOR THIS WORK.
 - ANY STRIPING OR MARKING IN CONFLICT WITH PLAN SHALL BE REMOVED BY WET SANDBLAST OR OTHER APPROVED METHOD.

- CONSTRUCTION NOTES**
- INSTALL TYPE 90 CONTROLLER ASSEMBLY PER SPECIAL PROVISIONS IN TYPE P CABINET. SET TOP OF FOUNDATION 9" ABOVE GRADE.
 - INSTALL LANE LINE PER DETAIL 2.
 - INSTALL DOUBLE CENTERLINE PER DETAIL 22.
 - INSTALL CHANNELIZING LINE PER DETAIL 38.
 - INSTALL CROSSWALK, 11' INSIDE OF 12" LINES.
 - INSTALL LIMIT LINE, 12".
 - INSTALL 50' @ 4" WHITE LINE, TYPE G MARKER AT EACH END.
 - INSTALL BIKE LANE AND MARKINGS AS SHOWN.
 - FIND AND INTERCEPT EXISTING 1-1/2" INTERCONNECT CONDUIT BETWEEN LA SIERRA AND PARK SIERRA DRIVE.
 - PAINT CURB YELLOW, BC TO BC.
 - LUMINAIRES FROM RELOCATED POWER POLES SHALL BE REMOVED BY PUBLIC UTILITIES.
 - INSTALL TYPE D MARKER AT 24' C-C.



EXISTING UNDERGROUND STRUCTURES
ALL UNDERGROUND UTILITIES OR STRUCTURES REPORTED BY THE OWNER OR OTHERS, AND THOSE SHOWN ON THE RECORDS EXAMINED, ARE INDICATED WITH THEIR APPROXIMATE LOCATION AND EXTENT. THE OWNER, BY ACCEPTING THESE PLANS OR PROCEEDING WITH IMPROVEMENTS PURSUANT THERETO, AGREES TO ASSUME LIABILITY AND TO HOLD UNDERSIGNED HARMLESS FOR ANY DAMAGES RESULTING FROM THE EXISTENCE OF UNDERGROUND UTILITIES OR STRUCTURES NOT REPORTED TO THE UNDERSIGNED, NOT INDICATED ON THE PUBLIC RECORDS EXAMINED, LOCATED AT VARIANCE WITH THOSE REPORTED OR SHOWN ON RECORDS EXAMINED. THE CONTRACTOR IS REQUIRED TO TAKE DUE PRECAUTIONARY MEASURES TO PROTECT THE UTILITIES OR STRUCTURES SHOWN AND ANY OTHER UTILITIES OR STRUCTURES FOUND AT THE SITE. IT SHALL BE THE CONTRACTOR'S RESPONSIBILITY TO NOTIFY THE OWNERS OF THE UTILITIES OR STRUCTURES CONCERNED BEFORE STARTING WORK.

NOTICE TO CONTRACTOR
CONTRACTOR SHALL VERIFY ALL CONDITIONS AND DIMENSIONS AND SHALL REPORT ALL DISCREPANCIES TO THE ENGINEER PRIOR TO THE COMMENCEMENT OF WORK.

The private engineer signing this plan is responsible for assuring the accuracy and acceptability of the work hereon. In the event that an error or omission is identified during construction, the private engineer shall be responsible for determining an acceptable solution and revising the plans for approval by the city.



Greiner
Greiner Engineering of California
5225 Canyon Crest Drive
Bldg 200, Suite 253
Riverside, California 92507
(714) 351-8329
(714) 788-7746
A Greiner Engineering, Inc Company

CITY OF RIVERSIDE PUBLIC WORKS DEPARTMENT
APPROVED BY: [Signature] DATE: 7-21-89
PRINCIPAL ENGINEER: [Signature] DATE: 7-21-89
TRAFFIC DIVISION: [Signature] DATE: 7-21-89
PUB. UTILITIES/ELECTR. [Signature] DATE: 7-21-89

CITY OF RIVERSIDE WATER SYSTEM
APPROVED BY: Richard J. Diehl DATE: 7-13-89

SOUTHERN CALIFORNIA GAS CO.
APPROVED BY: [Signature] DATE: 7-13-89

CITY OF RIVERSIDE ELECTRIC SYSTEM - OVERHEAD AND UNDERGROUND
APPROVED BY: [Signature] DATE: 7-13-89

PACIFIC TELEPHONE COMPANY
APPROVED BY: [Signature] DATE: 7-13-89

CITY OF RIVERSIDE
TRAFFIC SIGNAL PLAN
MAGNOLIA AVENUE
AT
SKOFSTAD STREET
ACCOUNT NO. X-342
SHEET 1 OF 1

HORIZ. SCALE: 1" = 20' VERT. SCALE: 1" =