

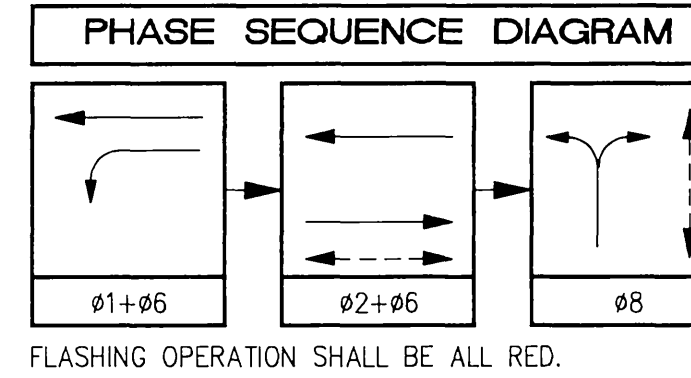
CONDUCTOR		TABLE						
AWG	CIRCUIT	RUNS						
		1	2	3	4	5	6	7
Ø1		3	3	3	6	3	3	3
Ø2		3	3	3	6	3	3	3
Ø5		3	3	3	3	3	3	3
Ø8		3	3	3	3	3	3	3
# 14	Ø2 PED	-	-	-	2	2	2	2
	Ø8 PED	-	2	2	4	2	-	-
	Ø2 PPB	-	-	-	1	1	1	1
	Ø8 PPB	-	1	1	2	1	-	-
	PPB COMMON	-	1	1	2	1	1	1
	SPARES	3	3	3	6	3	3	3
	TOTAL	12	19	19	35	16	10	10
DLC	Ø1 DETECTOR	-	-	-	1	1	-	-
	Ø2 DETECTOR	-	-	-	3	3	3	3
	Ø6 DETECTOR	-	2	2	2	-	-	-
	Ø8 DETECTOR	-	-	-	1	1	1	-
	TOTAL	-	2	2	7	4	4	3
# 8	LUMINAIRE	-	-	-	-	2	-	-
# 10	FLASHING BEACON	-	-	-	-	2	2	2
	SIGNAL COMMON	1	1	1	2	1	1	1
	TOTAL	1	1	1	2	3	3	3
# 12	I.S.N.S.	2	2	2	-	2	-	-
*	INTERCONNECT (FUTURE)	-	1	1	1	-	-	-
# 6	SIGNAL SERVICE	-	-	-	3	-	-	-
CONDUIT SIZE		2 1/2"	3"	3"	2-3"	3"	3"	3"

* = PULLROPE FOR FUTURE INTERCONNECT CABLE

DETECTOR		ASSIGNMENT	
CHANNELS	LOOP DESIGNATION	NUMBER OF LOOPS	FEATURES
1	1-W-2	2	● ●
2	2-W-2	2	▲
1,2	3-W-2	4	*
1	1-E-6	2	● ●
1,2	2-E-6	4	*
1	1-E-1	4	
2	1-S-8	3	▲

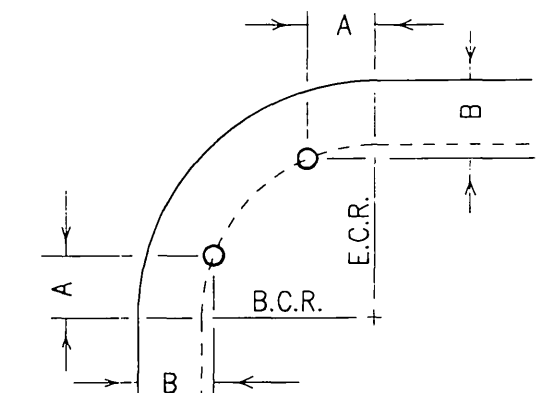
▲ = DELAY.
 ● = CALL-HOLD (EXTENSION).
 ● = ADDITIONAL CHANNEL FOR SAMPLING (FUTURE).
 * = DETECTOR DISCONNECT

DETECTORS SHALL BE RACK-MOUNTED 2-CHANNEL (ALSO SEE SPECIAL PROVISIONS).
 NOTE: (1) DETECTOR TIMING FEATURES MAY BE ACCOMPLISHED THROUGH INTERNAL LOGIC OF THE CONTROLLER UNIT.
 (2) SEE SPECIAL PROVISIONS REGARDING DETECTOR DISCONNECT.

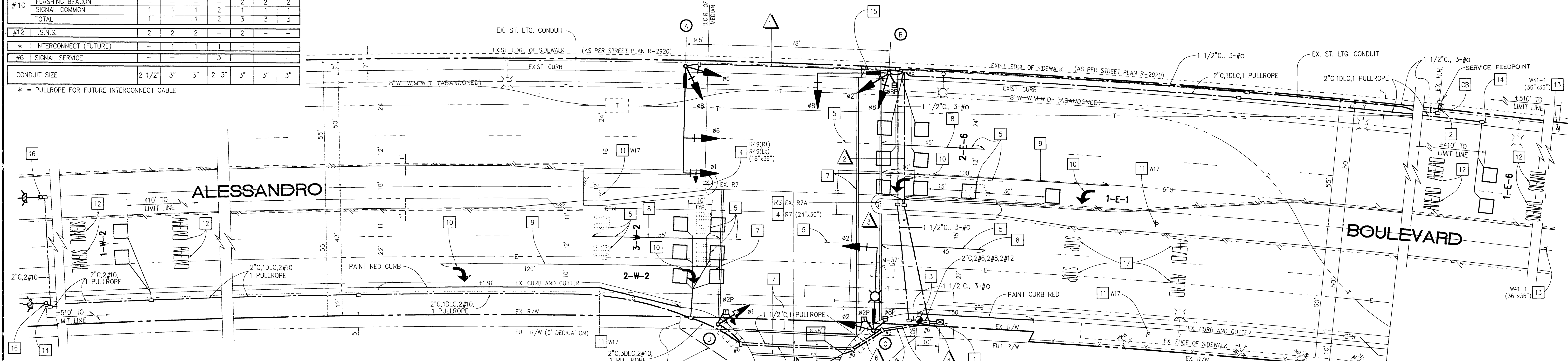


POLE		SCHEDULE											
No.	TYPE	STANDARD			LUMINAIRE HPS	I.I.S.N.S. LEGEND	SIGNAL MOUNTING		PPB PLACEMENT	REMARKS			
		HGT.	SG. M.A.	LUM. M.A.			VEHICLE	PED					
A	27-4-80	17'	45'	-	-	Communication Ctr	MAS	MAS	SV-2-TB	-	-	9.5' **	6.5'
B	18-2-80	17'	30'	-	-	Alessandro Blvd	MAS	MAS	SV-2-TB	SP-1-T	Ø8	78' **	6.5'
C	24-4-80	30'	35'	12'	250W	Communication Ctr	MAS	MAS	SV-1-T	SP-2-T	Ø2, Ø8	18.5'	8.5'
D	1-A *	10'	-	-	-	-	-	-	TV-1-T	SP-1-T	Ø2	17'	7'

I.I.S.N.S. = INTERNALLY ILLUMINATED STREET NAME SIGN.
 * = TYPE 1-A POLE SHALL BE ALUMINUM.
 ** = MEASURED FROM EXISTING MEDIAN B.C.R.



SIGNAL STANDARD PLACEMENT DETAIL
 NO SCALE



CONSTRUCTION NOTES (THIS SHEET):

- CONSTRUCT TYPE "P" CABINET FOUNDATION AND INSTALL CONTROLLER ASSEMBLY. (SEE SPECIAL PROVISIONS).
- CONTRACTOR SHALL INSTALL CONDUIT AND CONDUCTORS FROM SERVICE CABINET TO SERVICE FEEDPOINT. CITY OF RIVERSIDE UTILITIES SHALL SPICE CONDUCTORS IN SERVICE HANDHOLE. CONTACT MR. BOB HARPER OF CITY OF RIVERSIDE UTILITIES, PHONE (714) 782-5526, AT LEAST 48 HOURS BEFORE BEGINNING WORK.
- INSTALL 120V SIGN, 120V SIGNAL AND 240V STREET LIGHT SERVICE PER STD. DRW. #657. STD. DWG. #667 SHALL BE MODIFIED TO READ #6 SIGNAL SERVICE CONDUCTORS.
- INSTALL SIGN (3 EA.).
- REMOVE ALL CONFLICTING STRIPING AND PAVEMENT MARKINGS BY SANDBLASTING.
- PAINT 4" DOUBLE YELLOW STRIPE (±100 L.F.). SEE GENERAL NOTE 13.
- PAINT 12" WHITE CROSWALK OR LIMIT LINE (±360 L.F.). SEE GENERAL NOTE 13.
- PAINT 4" WHITE STRIPE (±145 L.F.).
- PAINT 8" WHITE LANE LINE (± 255 L.F.).
- PAINT ARROW MARKING (4 EA.).
- REMOVE EXISTING W17 SIGN AND POST (2 EA.) FROM NORTH LEG OF ALESSANDRO. RELOCATE W17 SIGN(S) TO NEW POST(S) SOUTHERLY OF INTERSECTION AS SHOWN ON PLAN.
- PAINT "SIGNAL AHEAD" PAVEMENT LEGEND (4 EA.).

- INSTALL SIGN AND POST (2 EA.).
- PROVIDE 1 1/2" STUB-OUT FOR FUTURE INTERCONNECT.
- CONSTRUCT "MID-BLOCK" WHEELCHAIR RAMP PER STD. DWG. No. 304.
- INSTALL ADVANCE FLASHING BEACON PER CALTRANS STD. ES-3C, TYPE 1A WITH FLASHING BEACON CONTROL ASSEMBLY PER CALTRANS STD. ES-4C AND W41 (36"x36") SIGN.
- "STOP AHEAD" PAVEMENT LEGEND SHALL BE PAINTED IN CONJUNCTION WITH STREET IMPROVEMENTS. SEE STREET IMPROVEMENT PLAN R-2839.

PROPOSED SIGNAL CONSTRUCTION AND MAINTENANCE EASEMENT (SEE GENERAL NOTE 13.)

PROPOSED SIGNAL CONSTRUCTION AND MAINTENANCE EASEMENT (SEE GENERAL NOTE 13.)

GENERAL NOTES:

- ALL WORK EMBODIED ON THESE PLANS SHALL BE DONE IN CONFORMITY WITH APPLICABLE PROVISIONS OF STANDARD SPECIFICATIONS OF THE STATE OF CALIFORNIA, DEPARTMENT OF TRANSPORTATION JAN. 1988 AND THE SPECIAL PROVISIONS.
- REFER TO THE STANDARD PLANS OF THE STATE OF CALIFORNIA, DEPARTMENT OF TRANSPORTATION, JAN. 1988 FOR COMPLETE TRAFFIC SIGNALS AND HIGHWAY LIGHTING INSTALLATION DETAILS AS INDICATED ON THIS SHEET.
- ALL LOOP DETECTOR INSTALLATION SHALL BE DONE IN THE PRESENCE OF THE CITY ENGINEER OR HIS REPRESENTATIVE.
- LOOP DETECTORS SHALL BE 6' X 6' EXCEPT AS OTHERWISE NOTED.
- ALL SIGNS AND PAVEMENT MARKING REQUIREMENTS MUST BE COMPLETED AT LEAST 1 DAY PRIOR TO TURN-ON.
- INTERNALLY ILLUMINATED STREET NAME SIGNS SHALL BE TYPE A.
- ALL PULL BOXES TO BE #5 UNLESS OTHERWISE NOTED.
- ALL VEHICLE HEADS TO BE 12" WITH BACKPLATE.
- CONTACT THE TRAFFIC SIGNAL MAINTENANCE 48 HOURS IN ADVANCE TO SCHEDULE INSPECTION OF THE WORK TO BE PERFORMED; TELEPHONE: (714) 782-5748.
- DELETED.
- LOCATION OF UTILITIES AND SUBSTRUCTURES HAVE BEEN SHOWN FROM A SEARCH OF THE AVAILABLE RECORDS. THE CONTRACTOR SHALL CONDUCT HIS OPERATION IN SUCH A MANNER AS TO PROTECT NOT ONLY THE UTILITIES AND SUBSTRUCTURES SHOWN, BUT OTHER UTILITIES OR SUBSTRUCTURES THAT ARE NOT SHOWN ON THESE PLANS.
- THE PRIVATE ENGINEER SIGNING THESE PLANS IS RESPONSIBLE FOR ASSURING THE ACCURACY AND ACCEPTABILITY OF THE WORK HEREON. IN THE EVENT OF DISCREPANCIES ARISING DURING CONSTRUCTION, THE PRIVATE ENGINEER SHALL BE RESPONSIBLE FOR DETERMINING AN ACCEPTABLE SOLUTION AND REVISING THE PLANS FOR APPROVAL BY THE CITY.
- CITY OF RIVERSIDE SHALL BE GIVEN A SIGNAL CONSTRUCTION AND MAINTENANCE EASEMENT PRIOR TO ANY WORK ON COUNTY PROPERTY.
- A STREET OPENING PERMIT ISSUED BY THE CITY OF RIVERSIDE PUBLIC WORKS DEPARTMENT IS REQUIRED FOR THIS PROJECT. A RATE OF \$29.35 PER HOUR IS CHARGED FOR INSPECTION.
- SERVICE CONNECTION CHARGES WILL BE BILLED BY RIVERSIDE PUBLIC UTILITIES DEPARTMENT. SEE CONSTRUCTION NOTE [2].
- REFER TO STREET IMPROVEMENT PLANS R-2839 AND R-2920 FOR DETAILS OF FUTURE CURBS AS INDICATED ON THIS SHEET.

COUNTY PROJECT NO. : 50057



TRAFFIC No. 0850
 DATE: 5/20/90

SOUTHERN CALIFORNIA GAS CO. APPROVED BY: <i>H.D. Samel</i> DATE: 5-2-90	CITY OF RIVERSIDE WATER SYSTEM APPROVED BY: _____ DATE: _____
PACIFIC BELL TELEPHONE CO. APPROVED BY: <i>Cheryl D. ...</i> DATE: 4/10/90	WESTERN MUNICIPAL WATER DISTRICT APPROVED BY: <i>Thomas A. ...</i> DATE: 5/1/90

MGA
 Mohle Grover & Associates
 901 E. Imperial Highway Suite A
 La Habra, California 90631
 (714) 738-3471 Fax: (714) 738-7802

MGA JOB NO. : 196-001
 MGA FILE NAME : ALECOM50.DWG
 LAST DATE REV : 5/29/90
 PRINT DATE : 5/29/90

DESIGNED BY: JLLPONTEJOS	DRAWN BY: JLLPONTEJOS	CHECKED BY: _____
DATE: 6/29/90	DATE: 6/29/90	DATE: 6/29/90

CITY OF RIVERSIDE, CALIFORNIA DEPARTMENT OF PUBLIC WORKS		
APPROVED BY: <i>Benny ...</i>	DATE: 6/29/90	APPROVED BY: _____
PRINCIPAL ENGINEER	DATE: 6/29/90	DATE: 6/29/90
PARK DEPARTMENT	DATE: 6/29/90	DATE: 6/29/90
TRAFFIC DIVISION	DATE: 6/29/90	DATE: 6/29/90
CHIEF P.W. ENGR.	DATE: 6/29/90	DATE: 6/29/90
PUBLIC UTILITIES	DATE: 6/29/90	DATE: 6/29/90

TRAFFIC SIGNAL PLAN		PROJECT NO.
ALESSANDRO BOULEVARD AND COMMUNICATIONS CENTER DRIVEWAY		X-348
HORIZ. SCALE: 1" = 20'		SHEET 1 OF 1
VERT. SCALE:		FILE NO.