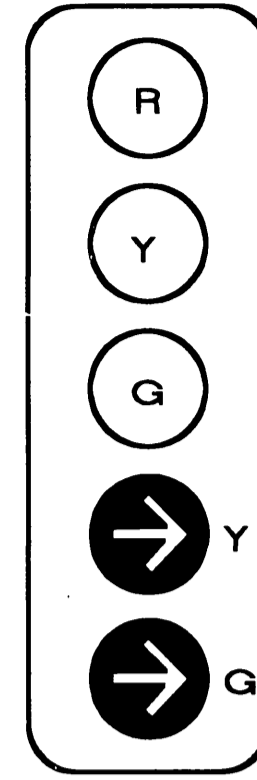


CONDUCTOR		TABLE					
AWG	CIRCUIT	RUNS					
		1	2	3	4	5	6
#1		3	3	3	6	3	3
#1+B (OVERLAP)		-	2	2	2	-	-
#2		-	-	3	3	-	-
#6		3	3	3	3	-	-
#8		3	3	3	3	-	-
#14		-	-	2	4	2	2
#2 PED		-	-	2	4	2	2
#8 PED		2	2	2	4	2	-
#2 PPB		-	-	1	2	1	-
#8 PPB		1	1	1	2	1	1
PPB COMMON		1	1	1	2	1	1
SPARES		3	3	3	6	3	3
TOTAL		16	18	24	37	13	10
#1 DETECTOR		-	2	2	2	-	-
#2 DETECTOR		-	-	-	2	2	2
#6 DETECTOR		-	2	2	2	-	-
#8 DETECTOR		-	-	-	3	-	-
TOTAL		-	4	4	9	2	2
#12 I.S.N.S.		2	2	2	-	-	-
#10 SIGNAL COMMON		1	1	1	2	1	1
#8 LUMINAIRE		2	2	2	-	2	-
#6 SIGNAL SERVICE		-	-	-	2	-	-
CONDUIT SIZE		2"	3"	3"	2"-3"	3"	2"

DETECTOR		ASSIGNMENT	
CHANNELS	LOOP DESIGNATION	NUMBER OF LOOPS	FEATURES
1	6J2U	1	●●
2	2I2U	2	●●
1	4I6U	2	●●
2	1I1U	3	
1	1I9U	1	●
2	6J2L	4	*
1	2I2L	4	*
2	4I6L	3	*
1	4I7U	3	*▲
2	SPARE	-	

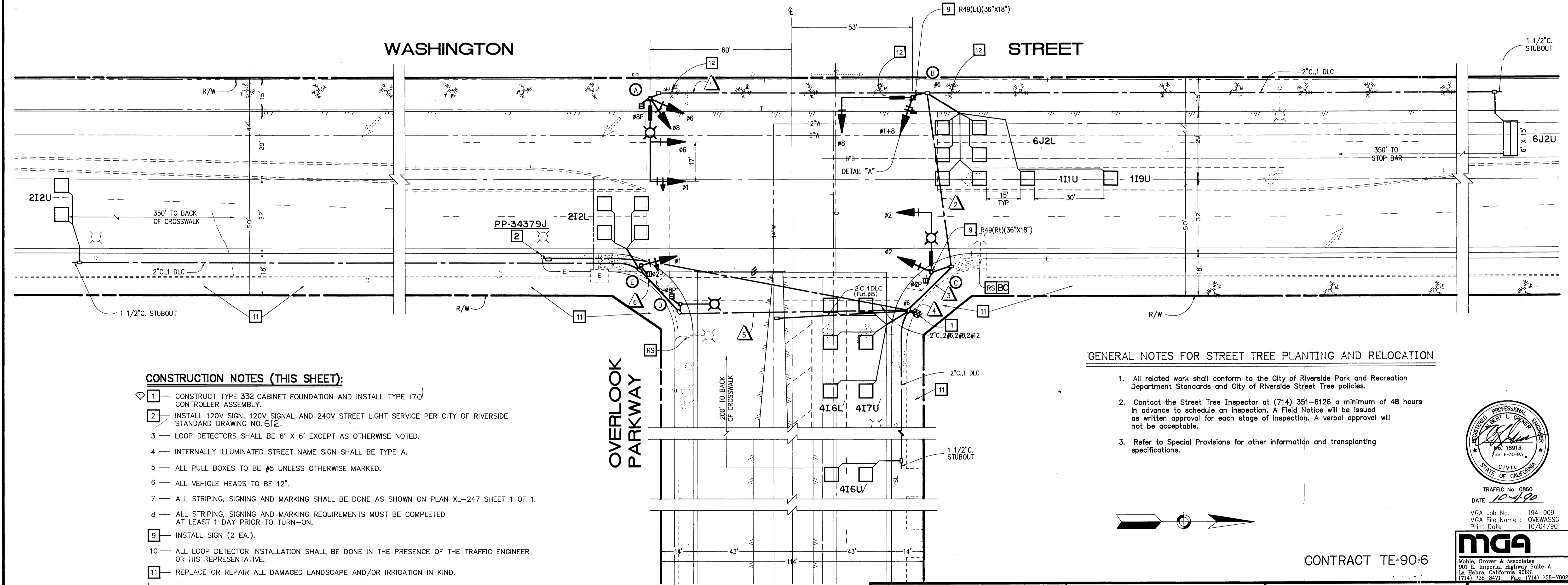
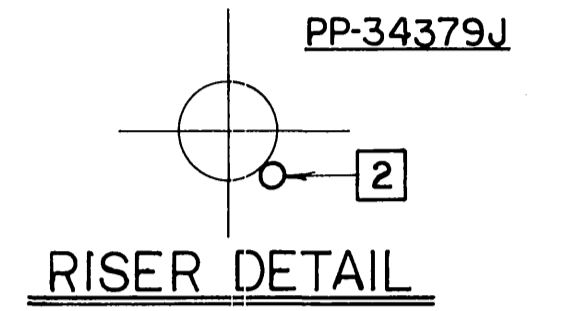
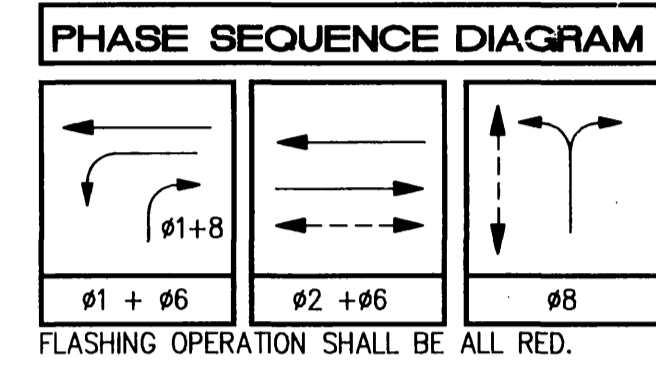
- DETECTORS SHALL BE 2-CHANNEL RACK-MOUNTED.
 - SEE SPECIAL PROVISIONS FOR DETAILS AND OTHER FEATURES.
 - DETECTOR TIMING FEATURES SHALL BE ACCOMPLISHED THRU THE INTERNAL LOGIC OF THE CONTROLLER UNIT.
 - DETECTOR LOOPS WITH SPECIAL FEATURES SHALL ALSO DETECT FOR NORMAL OPERATION.
- ▲ = DELAY.
 ● = CALL-HOLD (EXTENSION).
 ● = FOR SAMPLING.
 * = TYPE II DISCONNECT; SEE SPECIAL PROVISIONS.

DETAIL "A" NO SCALE



POLE						SCHEDULE								
STANDARD			LUMINAIRE			I.S.N.S.		SIGNAL MOUNTING		PPB		PLACEMENT		REMARKS
No.	TYPE	HGT.	SIG. M.A.	LUM. M.A.	HPS	LEGEND	VEHICLE	PED	PHASE	A	B			
A	24-4-80	30'	35'	12'	250W	Overlook Pray 1800	MAS	MAS	SV-2-T	SP-1-Tb	Ø8	☆	☆	
B	18-2-80	17'	30'	-	-	WASHINGTON ST. 2000	-	MAS	SV-1-T	-	-	☆	☆	
C	19-4-80	30'	25'	12'	250W	Overlook Pray 1800	-	MAS	SV-1-T	SP-1-T	Ø2	☆	☆	
D	15	30'	-	12'	250W	-	-	-	-	SP-1-T	Ø2	☆	☆	
E	1-A	10'	-	-	-	-	-	-	TV-1-T	SP-1-T	Ø8	☆	☆	

I.S.N.S. = INTERNALLY ILLUMINATED STREET NAME SIGN
 ALL TYPE 1-A STANDARDS SHALL BE ALUMINUM.
 ☆ = PLACEMENT TO BE DETERMINED BY ENGINEER IN THE FIELD.



CONSTRUCTION NOTES (THIS SHEET):

- CONSTRUCT TYPE 332 CABINET FOUNDATION AND INSTALL TYPE 170 CONTROLLER ASSEMBLY.
- INSTALL 120V SIGN, 120V SIGNAL AND 240V STREET LIGHT SERVICE PER CITY OF RIVERSIDE STANDARD DRAWING NO. 612.
- LOOP DETECTORS SHALL BE 6' X 6' EXCEPT AS OTHERWISE NOTED.
- INTERNALLY ILLUMINATED STREET NAME SIGN SHALL BE TYPE A.
- ALL PULL BOXES TO BE #5 UNLESS OTHERWISE MARKED.
- ALL VEHICLE HEADS TO BE 12".
- ALL STRIPING, SIGNING AND MARKING SHALL BE DONE AS SHOWN ON PLAN XL-247 SHEET 1 OF 1.
- ALL STRIPING, SIGNING AND MARKING REQUIREMENTS MUST BE COMPLETED AT LEAST 1 DAY PRIOR TO TURN-ON.
- INSTALL SIGN (2 EA.).
- ALL LOOP DETECTOR INSTALLATION SHALL BE DONE IN THE PRESENCE OF THE TRAFFIC ENGINEER OR HIS REPRESENTATIVE.
- REPLACE OR REPAIR ALL DAMAGED LANDSCAPE AND/OR IRRIGATION IN KIND.
- RELOCATE TO SPECIFICATION OF PARKS AND RECREATION DEPARTMENT (SEE SPECIAL PROVISIONS).

GENERAL NOTES FOR STREET TREE PLANTING AND RELOCATION

- All related work shall conform to the City of Riverside Park and Recreation Department Standards and City of Riverside Street Tree policies.
- Contact the Street Tree Inspector at (714) 351-6126 a minimum of 48 hours in advance to schedule an inspection. A Field Notice will be issued as written approval for each stage of inspection. A verbal approval will not be acceptable.
- Refer to Special Provisions for other information and transplanting specifications.



TRAFFIC No. 0860
 DATE: 10-4-90
 MGA Job No. : 194-009
 MGA File Name : OVEWASSG
 Print Date : 10/04/90

MGA
 Mobile, Grover & Associates
 901 E. Imperial Highway Suite A
 La Habra, California 90831
 (714) 738-3471 Fax: (714) 738-7802

CONTRACT TE-90-6



CITY OF RIVERSIDE, CALIFORNIA DEPARTMENT OF PUBLIC WORKS				TRAFFIC SIGNAL DESIGN		ACCT. NO. 30-576-389-15	
APPROVED BY	BY	DATE	APPROVED BY	BY	DATE	OVERLOOK PARKWAY AT WASHINGTON STREET	
PRINCIPAL ENGINEER	R. Greer	11/16/90	DIRECTOR OF PUBLIC WORKS	D. Greer	11/16/90	X-349	
INSPECTION	OK	11/16/90	CHIEF P.W. ENGR.	R. Greer	11/16/90	SHEET 1 OF 1	
TRAFFIC DIVISION	OK	11/16/90	PUBLIC UTILITIES	OK	11/16/90	FILE NO.	
MARK	REVISIONS	APPR. DATE	DESIGNED BY: R. BEARDSLEY	DRAWN BY: J.P./R.B.	CHECKED BY: E. LOZAN	HORIZ. SCALE: 1" = 20'	
						VERT. SCALE:	