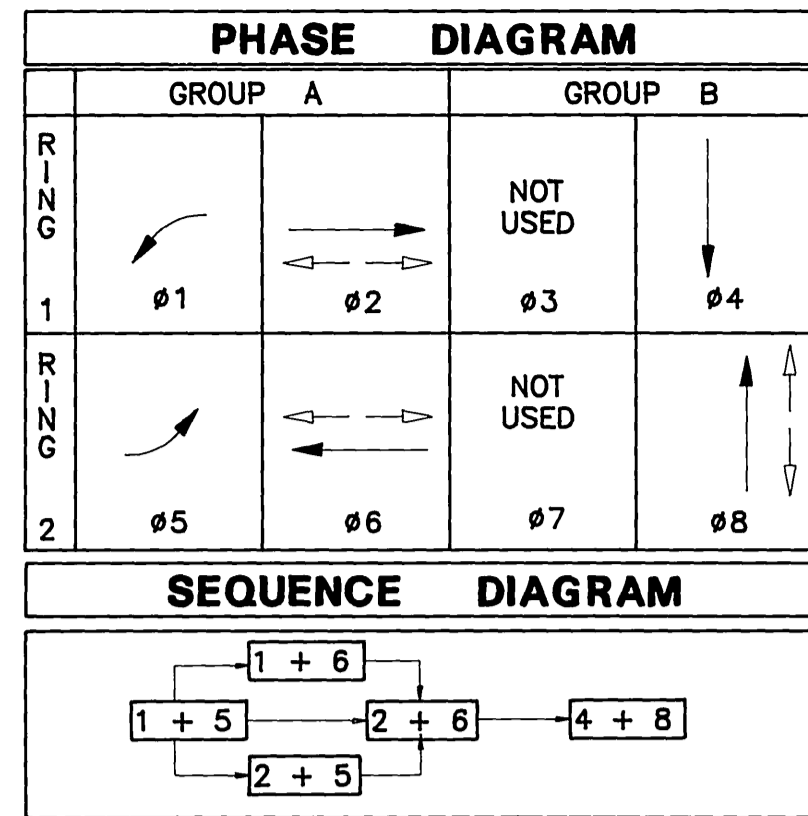


CONDUCTOR SCHEDULE										
AWG	CONDUCTOR	CONDUIT RUN								
		1	2	3	4	5	6	7	8	
#14	Ø1				3	3	3	3	3	3
	Ø2				3	3	3	3	3	3
	Ø4				3	3	3	3	3	3
	Ø5	3	3	3	6	3	3	3	3	3
	Ø6				3	3				
	Ø8		3	3	3					
	Ø2PED				2	2	2	2	2	2
	Ø6PED	2	2	2	4	2	2	2	2	2
	Ø8PED	2	2	2	4	2	2	2	2	2
	Ø2PPB				2	2	2	2	2	2
	Ø6PPB	1	1	2	2					
	Ø8PPB	1	1	1	2	1	1	1	1	1
	Ø2 BIKE PB				1	1	1	1	1	1
	Ø6 BIKE PB	1	1	1	1	1	1	1	1	1
PPB COMMON	1	1	1	2	1	1	1	1	1	
SPARE	3	3	3	6	3	3	3	3	3	
TOTAL #14	11	17	18	47	29	24	24	19	18	
#12	I.I.S.N.S.		2	2		2	2			
#10	SIGNAL COMMON	1	1	1	2	1	1	1	1	
#8	LUMINAIRE		2	2		2	2	2	2	
#6	SERVICE				2	2	2			
DLC #16/2	Ø1	1	1	1	1					
	Ø2				2	2	2			
	Ø4				2					
	Ø5				1	1	1			
	Ø6	3	3	3	3					
	Ø8				1	1	1	1	1	
TOTAL DLC	4	4	6	10	4	4	3	1		
6 PAIRS #19 I.C.				1	1	1				
CONDUIT SIZE	2"	2 1/2"	3"	2-3"	3"	2 1/2"	2"	2"		

SEE SPECIAL PROVISIONS FOR INTERCONNECT CABLE REQUIREMENTS



FLASHING INDICATION: ALL RED

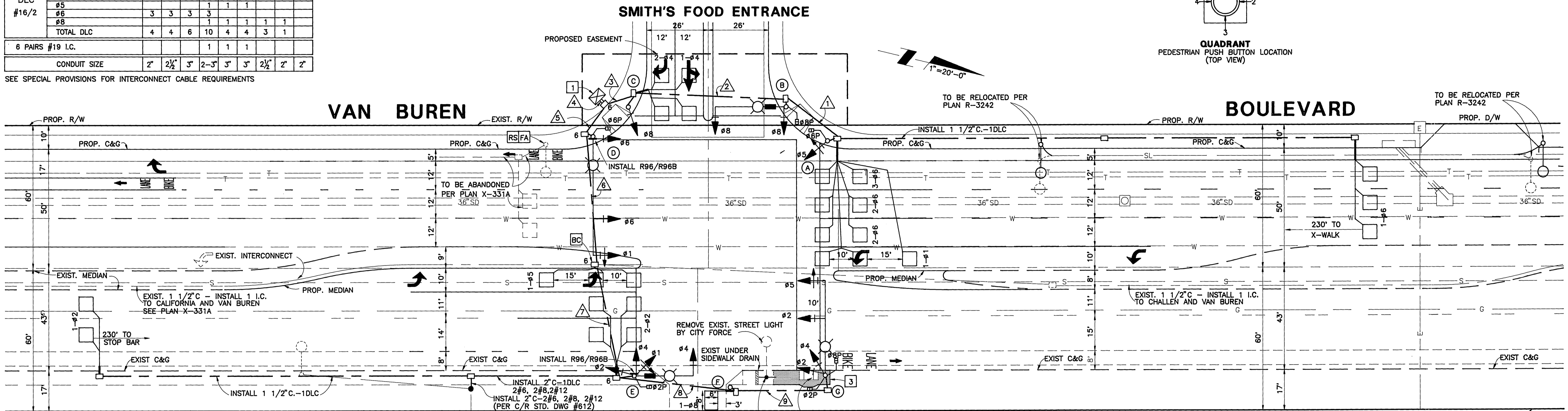
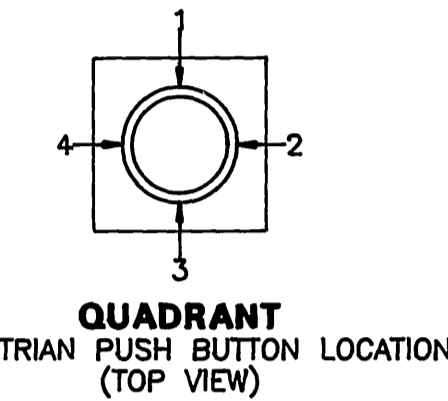
DETECTOR SCHEDULE				
CHANNELS	LOOP DESIGNATION	NUMBER OF LOOPS	FEATURES	
1	1-Ø2	2	■	●
2	2-Ø2	4	■	*
1	1-Ø5	3		
2	1-Ø4	2		
1	2-Ø4	2	▲	
2	1-Ø6	2	■	●
1	2-Ø6	4	■	*
2	3-Ø6	2		
1	1-Ø1	3		
2	1-Ø8	1	▲	

- FOR SAMPLING
- CALL-HOLD (EXTENSION)
- ▲ DELAY
- * SEE SPECIAL PROVISIONS REGARDING DETECTOR DISCONNECT

- NOTES:
- DETECTOR TIMING AND SAMPLING FEATURE SHALL BE ACCOMPLISHED THROUGH INTERNAL LOGIC OF THE CONTROLLER UNIT.
 - DETECTOR SHALL BE RACK-MOUNTED 2-CHANNEL (ALSO SEE SPECIAL PROVISIONS)
 - DETECTOR LOOPS DESIGNATED FOR SAMPLING SHALL ALSO PERFORM NORMAL OPERATION.

POLE SCHEDULE											
NO.	TYPE	HEIGHT	MAST ARM LENGTH		SIGNAL MOUNTING			PPB	H.P.S.V. LUMINAIRE	I.I.S.N.S. LEGEND	REMARKS
			SIGNAL	LUMINAIRE	MA	POLE	PED				
(A)	1-A	10'			TV-1-T	SP-1-T	Ø8 BIKE 4				Ø6 BIKE PB
(B)	19-3-80	30'	30'	12'	MAS	SV-1-T	SP-1-T	Ø6 3	200 W.	Van Buren BLVD 4200	
(C)	1-A	10'			TV-1-T		Ø6 3				
(D)	29-5-80	30'	50'	12'	2-MAS	SV-1-T	SP-1-T		250 W.		
(E)	19-3-80	30'	25'	12'	MAS	SV-3-TA	SP-1-T	Ø2 BIKE 3	200 W.	Van Buren BLVD 4200	Ø2 BIKE PB
(F)	PPB POST	3'-10"					Ø2 1				
(G)	26-4-80	30'	40'	12'	2-MAS	SV-2-T	SP-2-T	Ø8 4	250 W.		

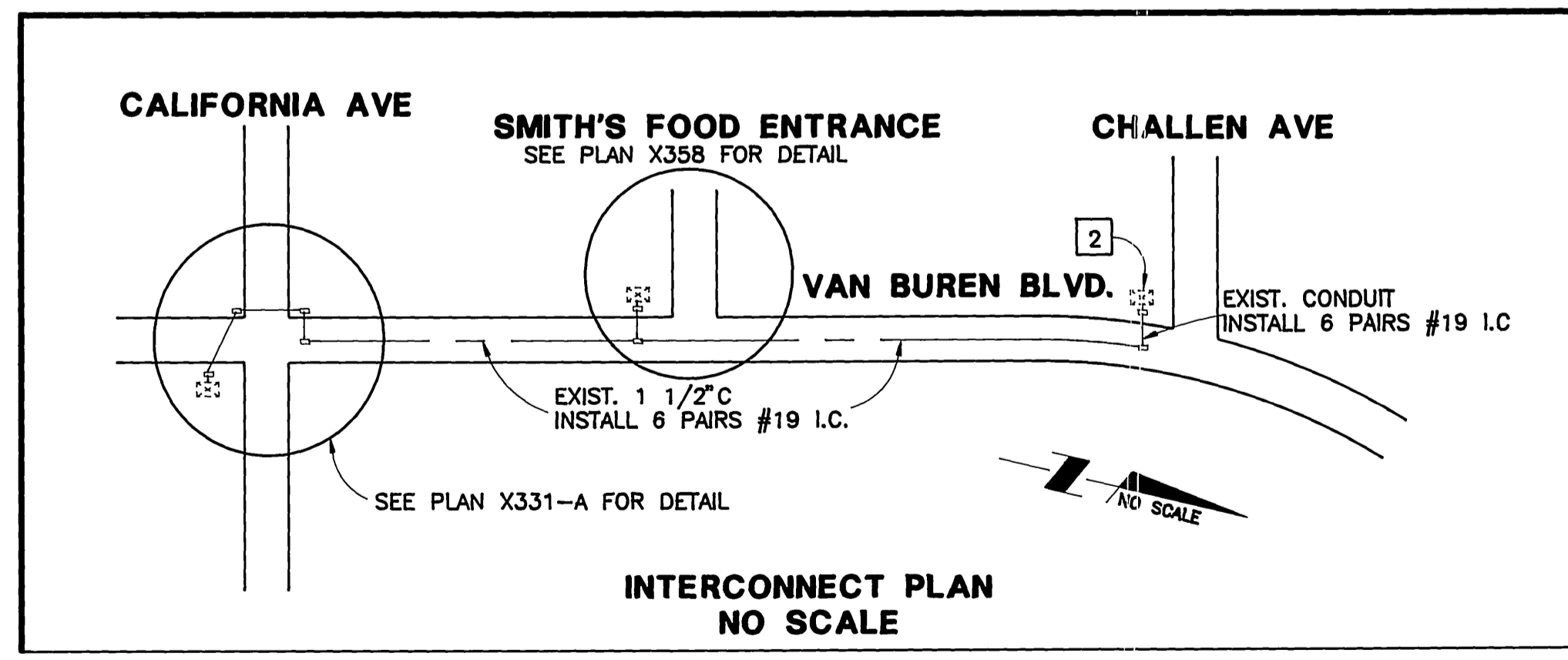
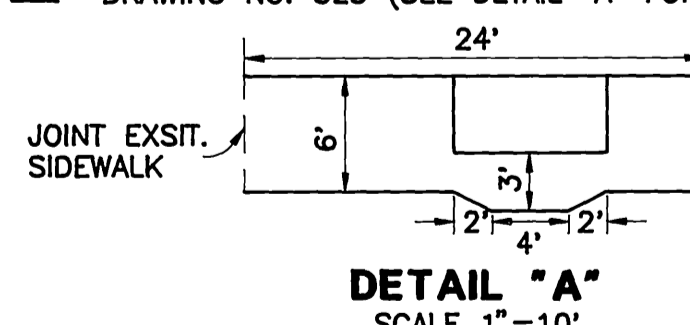
TYPE 1-A SHALL BE SPUN ALUMINUM



- GENERAL NOTES:**
- TRAFFIC WORK SHALL BE PERFORMED IN ACCORDANCE TO THE MOST CURRENT PROVISIONS OF SECTION 86 OF THE STANDARD SPECIFICATIONS, THE STANDARD PLANS, BOTH PUBLISHED BY THE STATE OF CALIFORNIA DEPARTMENT OF TRANSPORTATION (CALTRANS), THE CONSTRUCTION PLAN(S), SPECIAL PROVISIONS AND AS DIRECTED BY THE ENGINEER.
 - ALL EQUIPMENT AND LOOP LOCATIONS SHALL BE APPROVED BY THE TRAFFIC ENGINEER OR HIS REPRESENTATIVE PRIOR TO INSTALLATION BY CONTRACTOR.
 - ALL STRIPING, PAVEMENT MARKINGS AND SIGN REQUIREMENTS (REMOVAL OR INSTALLATIONS) SHALL BE COMPLETED AT LEAST ONE DAY PRIOR TO THE SCHEDULE TURN ON.
 - PULL BOXES SHALL BE NO. 5 UNLESS NOTED OTHERWISE HERE ON. ALL CONDUIT SIZE SHALL BE 2" MINIMUM UNLESS NOTED OTHERWISE HERE ON.
 - ALL SIGNAL HEADS AND BACK PLATES SHALL BE METAL. ALL LENSES SHALL BE GLASS. LEFT-TURN HEADS SHALL HAVE RED, YELLOW AND GREEN ARROWS. ALL VEHICLE INDICATIONS SHALL BE 12". PEDESTRIAN INDICATION SHALL BE INTERNATIONAL SYMBOL TYPE "C".
 - IT SHALL BE THE RESPONSIBILITY OF THE CONTRACTOR TO VERIFY THE EXISTENCE AND LOCATION OF ALL UNDERGROUND UTILITIES, PUBLIC OR PRIVATE, AND TO PROTECT THEM FROM DAMAGE. THE CONTRACTOR SHALL BEAR THE TOTAL EXPENSE OF REPAIR OR REPLACEMENT OF ANY UNDERGROUND FACILITY DAMAGE BY HIS OPERATIONS.
 - UNLESS SHOWN OTHERWISE, ALL INDUCTIVE LOOPS SHALL BE 6"X6" WITH 10' SPACING IN THE DIRECTION OF TRAVEL. NECESSARY STRIPING SHALL BE LOCATED PRIOR TO POSITIONING DETECTORS.
 - SPLICING OF THE CONDUCTORS IS NOT ALLOWED.
 - THIS WORK REQUIRES A "STREET OPENING" PERMIT OBTAINED AT THE PUBLIC WORKS COUNTER.

- INSPECTION FEE WILL BE AT THE RATE OF \$29.35 PER HOUR; CONTACT SIGNAL MAINTENANCE AT (714) 351-6096.
- THE PRIVATE ENGINEER SIGNING THESE PLANS IS RESPONSIBLE FOR ASSURING THE ACCURACY AND ACCEPTABILITY OF THE WORK HEREON. IN THE EVENT DISCREPANCIES ARISING DURING CONSTRUCTION, THE PRIVATE ENGINEER SHALL BE RESPONSIBLE FOR DETERMINING AN ACCEPTABLE SOLUTION AND REVISING THE PLANS FOR APPROVAL BY THE CITY.
- ALL SALVAGE MATERIALS SHALL BE DELIVERED TO CITY YARD AT 8095 LINCOLN AVENUE.
- THE CONTRACTOR SHALL FURNISH ALL CIRCUIT BREAKERS TYPES AS SPECIFIED:
 - A: SQUARE D CABINET LOAD CENTER-SQDD06-12RB
 - B: 30 AMP BREAKER (LUMINAIRE) D.P.#SQD SQ
 - C: 40 AMP BREAKER (SIGNALS) S.P.#SQD QD
 - D: 15 AMP BREAKER (I.S.N.S.) S.P.#SQD QD
- ABANDONED FOUNDATIONS SHALL BE COMPLETELY REMOVED.
- FOR STRIPING AND SIGNING SEE PLAN XL-289.
- FOR ROADWAY CONSTRUCTION DETAILS SEE STREET IMPROVEMENT PLAN R-3242.

- CONSTRUCTION NOTES**
- FURNISH AND INSTALL TRACONEX 390 WITH TMM 500 IN TYPE "P" CABINET. (SEE SPECIAL PROVISIONS)
 - REMOVE AND SALVAGE EXIST. CONTROLLER AND REPLACE WITH TRACONEX 390; CABINET MODIFICATIONS IS TO WIRE FOR "D" CONNECTOR.
 - CONSTRUCT SIDEWALK PER CITY OF RIVERSIDE STANDARD DRAWING NO. 325 (SEE DETAIL "A" FOR DIMENSIONS)



CENCOM CABLE TV	PACIFIC BELL	SOUTHERN CALIFORNIA GAS COMPANY	CITY OF RIVERSIDE - WATER
Reviewed by: <i>[Signature]</i> DATE: 10/8/91	Reviewed by: <i>[Signature]</i> DATE: 10-7-91	Reviewed by: <i>[Signature]</i> DATE: 10-9-91	Reviewed by: <i>[Signature]</i> DATE: 10-22-91

Underground Service Alert
Call: TOLL FREE
1 - 800
422 - 4133
TWO WORKING DAYS BEFORE YOU DIG

PRIVATE ENGINEERING NOTE
CONSTRUCTION CONTRACTOR AGREES THAT IN ACCORDANCE WITH GENERALLY ACCEPTED CONSTRUCTION PRACTICES, CONSTRUCTION CONTRACTOR WILL BE REQUIRED TO ASSUME SOLE AND COMPLETE RESPONSIBILITY FOR JOB SITE CONDITIONS DURING THE COURSE OF CONSTRUCTION OF THE PROJECT, INCLUDING SAFETY OF ALL PERSONS AND PROPERTY; THAT THIS REQUIREMENT SHALL BE MADE TO APPLY CONTINUOUSLY AND NOT BE LIMITED TO NORMAL WORKING HOURS, AND CONSTRUCTION CONTRACTOR FURTHER AGREES TO DEFEND INDEMNIFY AND HOLD DESIGN PROFESSIONAL HARMLESS FROM ANY AND ALL LIABILITY, REAL OR ALLEGED, IN CONNECTION WITH THE PERFORMANCE OF WORK ON THIS PROJECT, EXCEPTING LIABILITY ARISING FROM THE SOLE NEGLIGENCE OF DESIGN PROFESSIONAL

PROFESSIONAL ENGINEER
No. 35458
Exp. 12/31/95
CIVIL
STATE OF CALIFORNIA

PREPARED UNDER THE DIRECTION OF
[Signature]
REGISTERED CIVIL ENGINEER NO: 35458
EXPIRATION DATE: 9/30/95 DATE: 10/4/91
RECOMMENDED BY:
[Signature]
James B. Dobbins DATE: 10/4/91

J.F. Davidson Associates, Inc.
ENGINEERING PLANNING SURVEYING LANDSCAPE ARCHITECTURE
MUNICIPAL ENGINEERING DIVISION
3426 TENTH STREET
P.O. BOX 493
RIVERSIDE, CA 92502
(714) 683-0209 FAX (714) 686-5807
SCALE: 1"=20'-0"
BENCH MARK:
DATE: OCTOBER, 1991

DESIGNED BY OKT/CMM DRAWN BY OKT/CMM CHECKED BY [Signature]
DATE: 10/24/91

CITY OF RIVERSIDE, CALIFORNIA
DEPARTMENT OF PUBLIC WORKS
APPROVED BY: *[Signature]* DATE: 10/24/91
PRINCIPAL ENGINEER
CHIEF P.W. ENGINEER
PUBLIC UTILITIES

TRAFFIC SIGNAL PLAN
VAN BUREN BLVD
AND
SMITH FOOD ENTRANCE
FOR: SMITH'S FOOD & DRUG

PROJECT NO. 9012237
X-358
SHEET 1 OF 1
FILE NO: