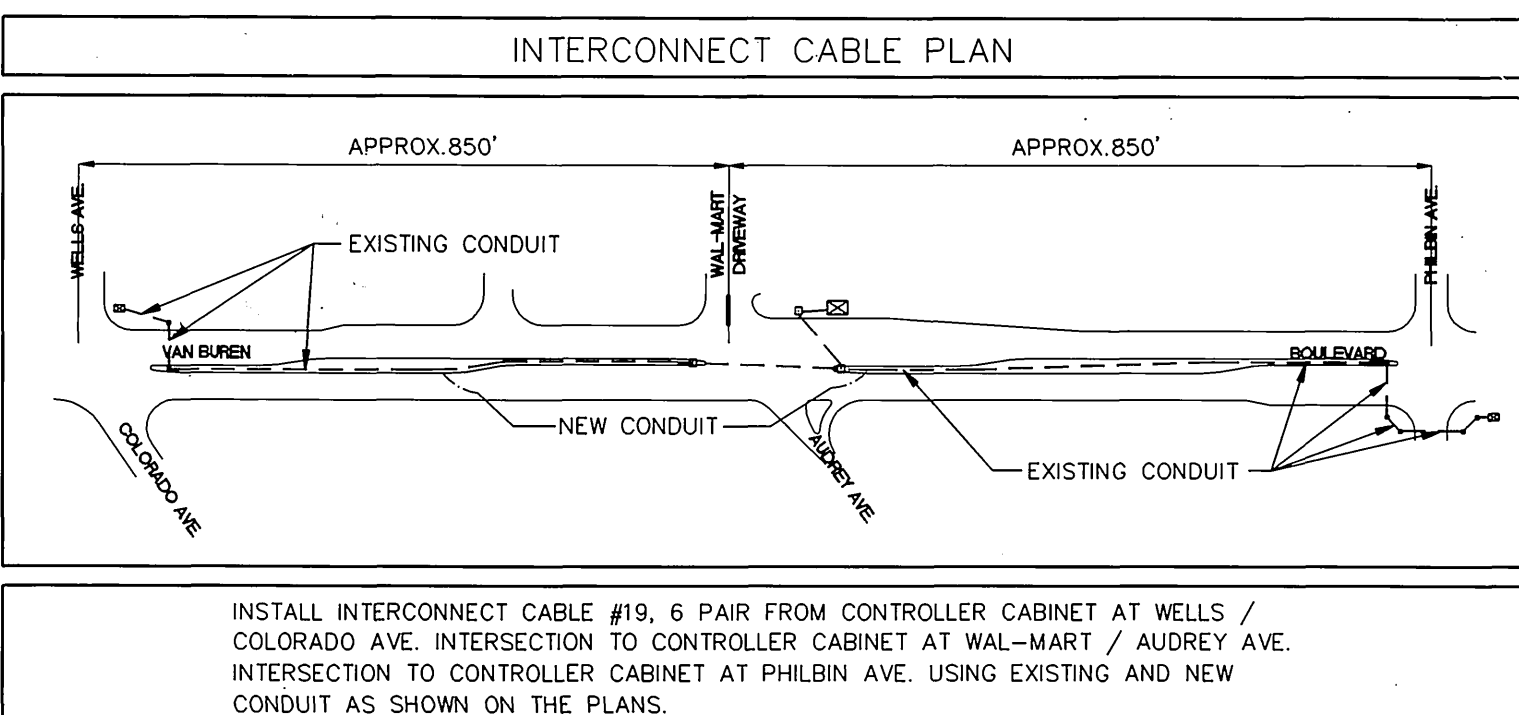


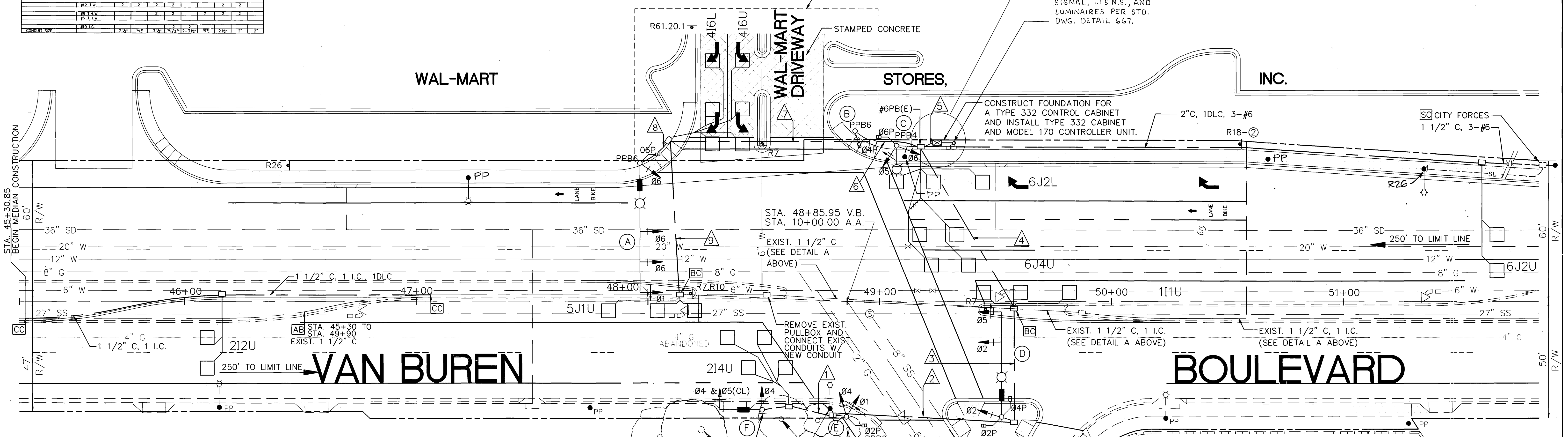
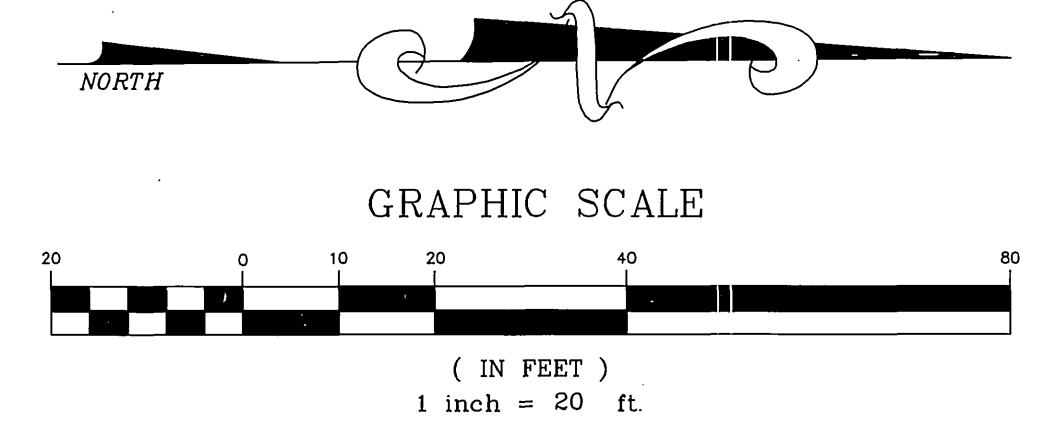
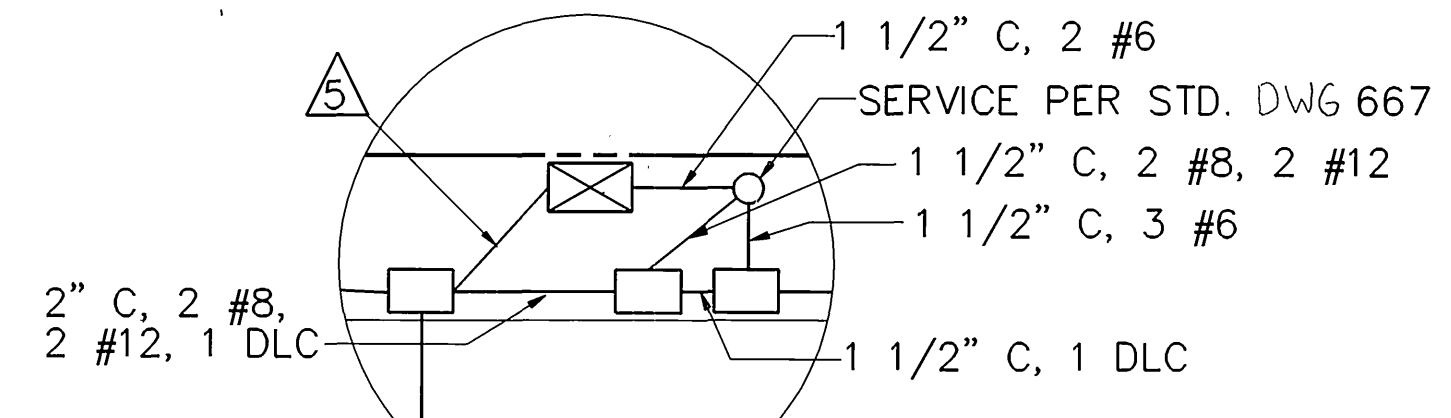
CONDUCTOR SCHEDULE								
CONTROL FUNCTION	CONDUCTORS	1	2	3	4	5	6	7
VEHICLE HEADS								
PHASE 1								
PHASE 2								
PHASE 3								
PHASE 4								
PHASE 5								
PHASE 6								
PHASE 7								
PHASE 8								
PHASE 9								
PHASE 10								
PHASE 11								
PHASE 12								
PHASE 13								
PHASE 14								
PHASE 15								
PHASE 16								
PHASE 17								
PHASE 18								
PHASE 19								
PHASE 20								
PHASE 21								
PHASE 22								
PHASE 23								
PHASE 24								
PHASE 25								
PHASE 26								
PHASE 27								
PHASE 28								
PHASE 29								
PHASE 30								
PHASE 31								
PHASE 32								
PHASE 33								
PHASE 34								
PHASE 35								
PHASE 36								
PHASE 37								
PHASE 38								
PHASE 39								
PHASE 40								
PHASE 41								
PHASE 42								
PHASE 43								
PHASE 44								
PHASE 45								
PHASE 46								
PHASE 47								
PHASE 48								
PHASE 49								
PHASE 50								
PHASE 51								
PHASE 52								
PHASE 53								
PHASE 54								
PHASE 55								
PHASE 56								
PHASE 57								
PHASE 58								
PHASE 59								
PHASE 60								
PHASE 61								
PHASE 62								
PHASE 63								
PHASE 64								
PHASE 65								
PHASE 66								
PHASE 67								
PHASE 68								
PHASE 69								
PHASE 70								
PHASE 71								
PHASE 72								
PHASE 73								
PHASE 74								
PHASE 75								
PHASE 76								
PHASE 77								
PHASE 78								
PHASE 79								
PHASE 80								
PHASE 81								
PHASE 82								
PHASE 83								
PHASE 84								
PHASE 85								
PHASE 86								
PHASE 87								
PHASE 88								
PHASE 89								
PHASE 90								
PHASE 91								
PHASE 92								
PHASE 93								
PHASE 94								
PHASE 95								
PHASE 96								
PHASE 97								
PHASE 98								
PHASE 99								
PHASE 100								

DETECTOR SCHEDULE			
CHANNELS	LOOP DESIGNATION	NUMBER OF LOOPS	FEATURES
1	1TU	3	
2	5JU	3	
1	212U	2	●
2	214U	4	●
1	6J4U	2	●
2	6J2U	4	●
1	4I6U	3	▲
2	4I6L	3	▲

● SAMPLING (FUTURE)  
 ■ CALL-HOLD (EXTENSION)  
 ▲ DELAY  
 \* DISCONNECT  
 1. DETECTORS SHALL BE 2-CHANNEL RACK MOUNTED.  
 2. DETECTORS TIMING FEATURES SHALL BE ACCOMPLISHED THRU INTERNAL LOGIC OF THE CONTROLLER.  
 3. DETECTOR LOOPS WITH SPECIAL FEATURES SHALL ALSO DETECT FOR NORMAL OPERATION.

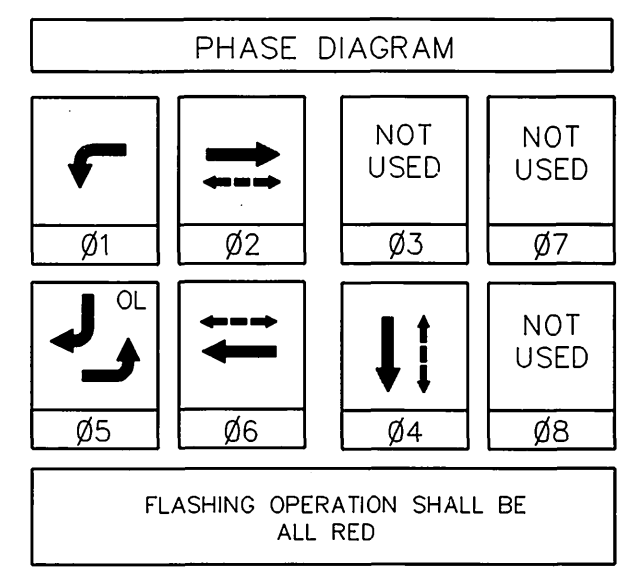


DETAIL A



GENERAL NOTES:

- TRAFFIC WORK SHALL BE PERFORMED IN ACCORDANCE TO THE MOST CURRENT PROVISIONS OF SECTION 86 OF THE STANDARD SPECIFICATIONS, THE STANDARD PLANS, BOTH PUBLISHED BY THE STATE OF CALIFORNIA DEPARTMENT OF TRANSPORTATION (CALTRANS), THE CONSTRUCTION PLAN(S), SPECIAL PROVISIONS AND AS DIRECTED BY THE ENGINEER.
- ALL EQUIPMENT AND LOOP LOCATIONS SHALL BE APPROVED BY THE TRAFFIC ENGINEER OR HIS REPRESENTATIVE PRIOR TO INSTALLATION BY CONTRACTOR.
- ALL STRIPING, PAVEMENT MARKINGS AND SIGN REQUIREMENTS (REMOVAL OR INSTALLATIONS) SHALL BE COMPLETED AT LEAST ONE DAY PRIOR TO THE SCHEDULE TURN ON.
- PULL BOXES SHALL BE NO. 5 UNLESS NOTED OTHERWISE HERE ON. ALL CONDUIT SIZE SHALL BE 2" MINIMUM UNLESS NOTED OTHERWISE HERE ON.
- ALL SIGNAL HEADS AND BACK PLATES SHALL BE METAL. ALL LENSES SHALL BE GLASS. LEFT-TURN HEADS SHALL HAVE RED, YELLOW AND GREEN ARROWS. ALL VEHICLE INDICATIONS SHALL BE 12". PEDESTRIAN INDICATION SHALL BE INTERNATIONAL SYMBOL TYPE "C".
- IT SHALL BE THE RESPONSIBILITY OF THE CONTRACTOR TO VERIFY THE EXISTENCE AND LOCATION OF ALL UNDERGROUND UTILITIES, PUBLIC OR PRIVATE, AND TO PROTECT THEM FROM DAMAGE. THE CONTRACTOR SHALL BEAR THE TOTAL EXPENSE OF REPAIR OR REPLACEMENT OF ANY UNDERGROUND FACILITY DAMAGE BY HIS OPERATIONS.
- UNLESS SHOWN OTHERWISE, ALL INDUCTIVE LOOPS SHALL BE 6'x6' WITH 10' AND 15' SPACING. NECESSARY STRIPING SHALL BE LOCATED PRIOR TO POSITIONING DETECTORS.
- SPLICING OF THE CONDUCTORS IS NOT ALLOWED.
- THE PRIVATE ENGINEER SIGNING THESE PLANS IS RESPONSIBLE FOR ASSURING THE ACCURACY AND ACCEPTABILITY OF THE WORK HEREON. IN THE EVENT OF DISCREPANCIES ARISING DURING CONSTRUCTION, THE PRIVATE ENGINEER SHALL BE RESPONSIBLE FOR DETERMINING AN ACCEPTABLE SOLUTION AND REVISING THE PLANS FOR APPROVAL BY THE CITY.
- THE ELECTRICAL SERVICE FOR THIS TRAFFIC SIGNAL WILL BE PROVIDED BY THE CITY OF RIVERSIDE. THE EXISTING OVERHEAD ELECTRICAL LINES ON THE WEST SIDE OF VAN BUREN BLVD. WILL BE RELOCATED TO THE BACK OF NEW CURB ALIGNMENT AND SERVICE WILL BE PROVIDED TO THE CONTROL CABINET FROM A RELOCATED POWER POLE LOCATED APPROXIMATELY 330' NORTH OF AUDREY AVENUE CENTERLINE AS SHOWN HEREON.
- CONTRACTOR SHALL INSTALL 2 EA. W41(36") AND POST ON VAN BUREN N'LY AND S'LY OF AUDREY AS DIRECTED IN THE FIELD.
- FOR STREET IMPROVEMENTS, SEE PLAN R-3319.
- FOR SIGNING AND STRIPING, SEE PLAN XL-319.



- RED BALL
- YELLOW BALL
- GREEN BALL
- YELLOW ARROW
- GREEN ARROW

POLE SCHEDULE										
NO.	TYPE	HGT.	SIG. M.A.	LUM. M.A.	LUM. HPSV	I.I.S.N.S. LEGEND	SIGNAL HEAD	SIGNAL MOUNTING VEHICLE	PPB PHASE	REMARKS
(A)	29-5-80	30'	55'	12'	250W	AUDREY AVE. 9250	1W3C	MAS		F=15'
							1W3C	MAS		F=12'
(B)	1A	7'					1W3C	SV-1-T	SP-1-T	6 ((-))
							1W3C	TP-1-T	4	((-))
(C)	15	30'		12'	250W		2W3C	SV-2-TD	SP-1-T	6 ((-))
(D)	26-4-80	30'	45'	12'	250W	AUDREY AVE. 9250	1W3C	MAS		F=15'
							1W3C	MAS		F=15'
							1W3C	SV-1-TD	SP-2-T	2,4 ((-))
(E)	1A	10'					2W3C	TV-2-T	SP-1-T	2 ((-)) (2)
(F)	16-2-80	17'	18'			VAN BUREN BLVD. 9250	1W3C	MAS		
							1W3C	SV-1-T		

NOTE: 1. ALL TYPE 1A STANDARDS SHALL BE ALUMINUM. 5. ((-)) INDICATES AUDITORY PED.  
 2. ALL VEHICULAR HEADS SHALL HAVE 12" LENSES.  
 3. ALL LUMINAIRES SHALL BE HIGH PRESSURE SODIUM VAPOR. SIGNAL SEE SPECIAL PROVISIONS.  
 4. LEFT-TURN INDICATIONS SHALL HAVE ALL ARROWS.

UNDERGROUND SERVICE ALERT  
 CALL: TOLL FREE 1-800-422-4133  
 TWO WORKING DAYS BEFORE YOU DIG

PRIVATE ENGINEERING NOTE:  
 CONSTRUCTION CONTRACTOR AGREES THAT IN ACCORDANCE WITH GENERALLY ACCEPTED CONSTRUCTION PRACTICES, CONSTRUCTION CONTRACTOR WILL BE REQUIRED TO ASSUME SOLE AND COMPLETE RESPONSIBILITY FOR JOB SITE CONDITIONS DURING THE COURSE OF CONSTRUCTION OF THE PROJECT, INCLUDING SAFETY OF ALL PERSONS AND PROPERTY; THAT THIS REQUIREMENT SHALL BE MADE TO APPLY CONTINUOUSLY AND NOT BE LIMITED TO NORMAL WORKING HOURS, AND CONSTRUCTION CONTRACTOR FURTHER AGREES TO DEFEND INDEMNIFY AND HOLD DESIGN PROFESSIONAL HARMLESS FROM ANY AND ALL LIABILITY, REAL OR ALLEGED, IN CONNECTION WITH THE PERFORMANCE OF WORK ON THIS PROJECT, EXCEPTING LIABILITY ARISING FROM THE SOLE NEGLIGENCE OF DESIGN PROFESSIONAL.

PREPARED UNDER THE DIRECTION OF  
 Michael O. Cahela  
 REGISTERED CIVIL ENGINEER NO. 39088  
 EXPIRATION DATE: 6/30/93

LOCATION 'F' MASTARM  
 DUNAWAY ASSOCIATES WEST INC  
 ENGINEERS LANDSCAPE ARCHITECTS PLANNERS  
 4500 S. LAKESHORE DRIVE SUITE 250  
 TEMPE, ARIZONA 85282  
 (602) 345-0383 FAX (602) 491-2581

CITY OF RIVERSIDE  
 PUBLIC WORKS DEPARTMENT  
 APPROVED BY: [Signature]  
 DATE: 5/13/93  
 TRAFFIC DIVISION: [Signature]  
 CHIEF P.W. ENGINEER: [Signature]  
 PUBLIC UTILITIES: [Signature]

TRAFFIC SIGNAL PLAN  
 VAN BUREN BLVD. AND AUDREY AVENUE  
 ACCOUNT NO. X-377  
 SHEET 1 OF 1  
 HORZ. SCALE: 1" = 20' VERT. SCALE: 1" =