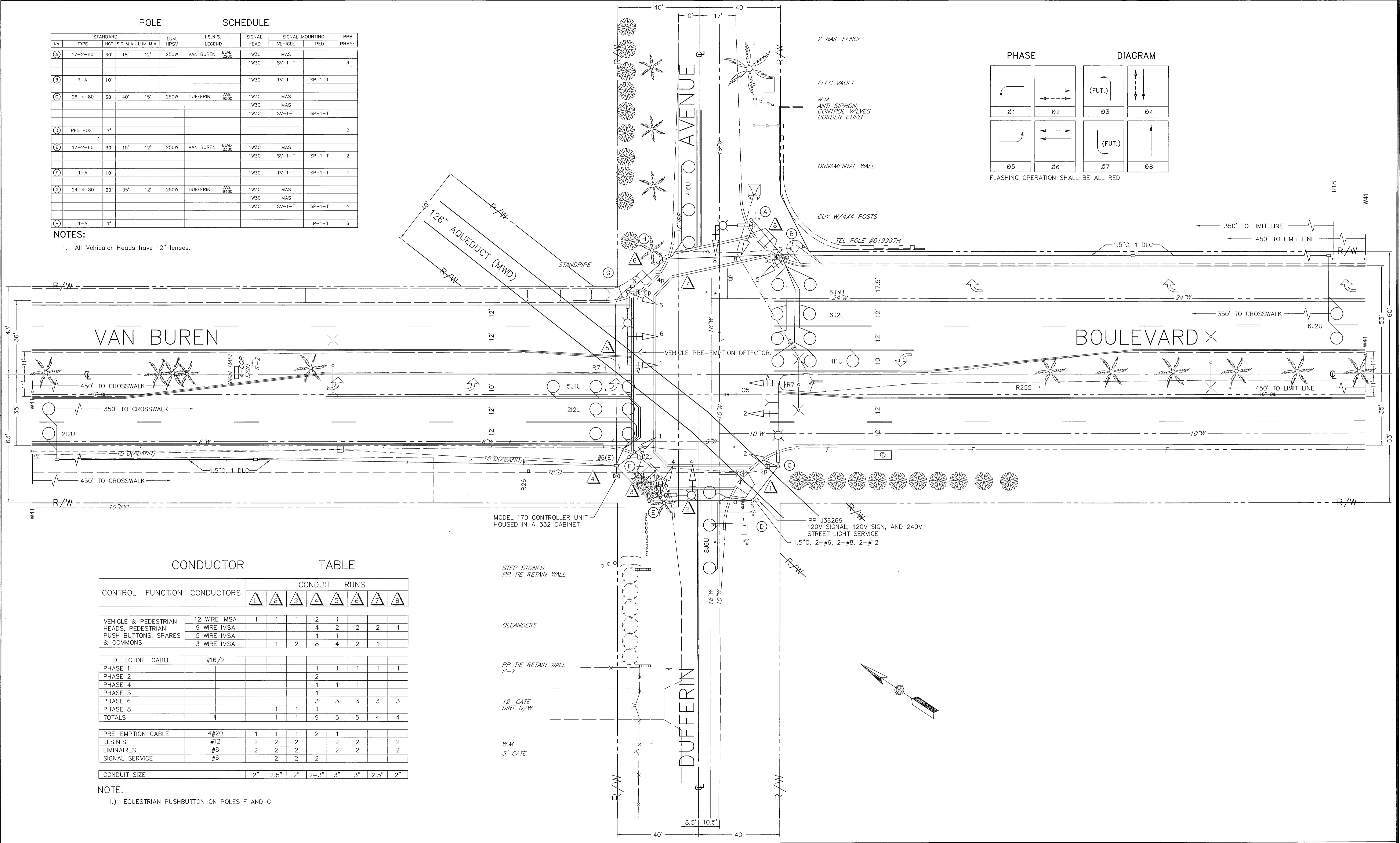
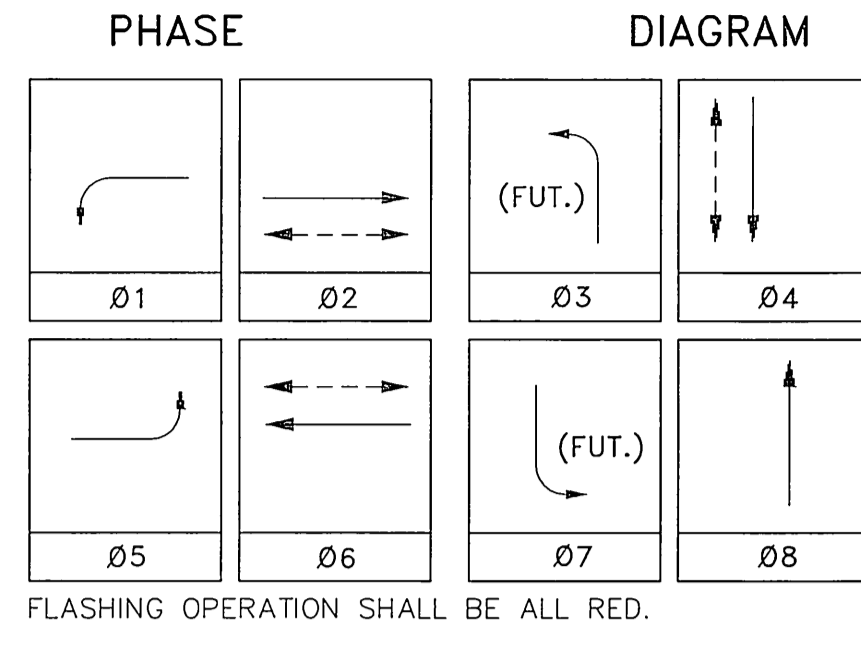


POLE SCHEDULE

No.	TYPE	HGT.	SIG. M.A.	LUM. M.A.	LUM. HPSV	I.S.N.S. LEGEND	SIGNAL HEAD	SIGNAL MOUNTING VEHICLE	PED	PPB PHASE
(A)	17-2-80	30'	18'	12'	250W	VAN BUREN BLVD 2300	1W3C	MAS		6
(B)	1-A	10'					1W3C	TV-1-T	SP-1-T	
(C)	26-4-80	30'	40'	15'	250W	DIFFERIN AVE 9300	1W3C	MAS		
							1W3C	MAS		
							1W3C	SV-1-T	SP-1-T	
(D)	PED POST	7'								2
(E)	17-2-80	30'	15'	12'	250W	VAN BUREN BLVD 2300	1W3C	MAS		2
							1W3C	SV-1-T	SP-1-T	
(F)	1-A	10'					1W3C	TV-1-T	SP-1-T	4
(G)	24-4-80	30'	35'	12'	250W	DIFFERIN AVE 9400	1W3C	MAS		
							1W3C	MAS		
							1W3C	SV-1-T	SP-1-T	4
(H)	1-A	7'							TP-1-T	6

NOTES:
1. All Vehicular Heads have 12" lenses.



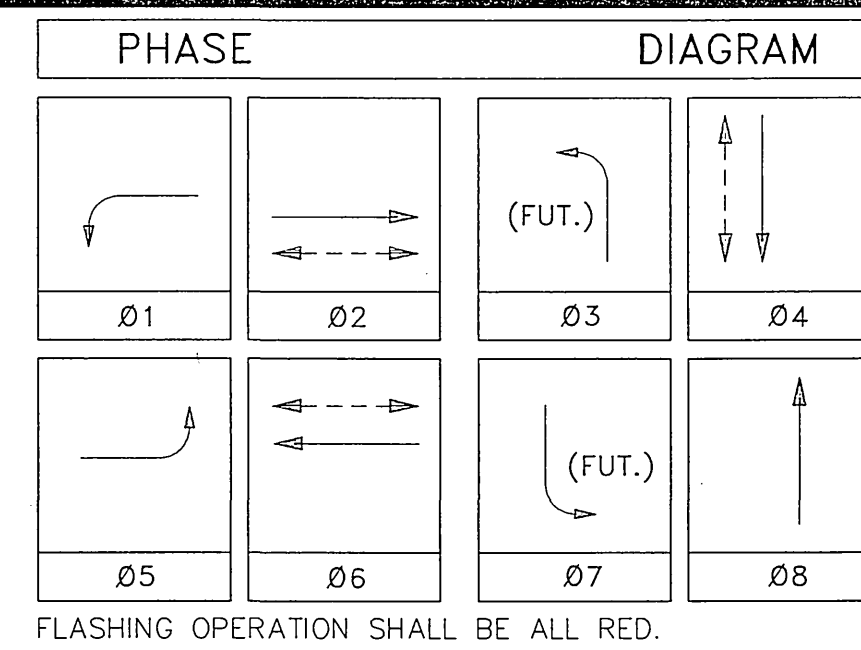
CONDUCTOR TABLE

CONTROL FUNCTION	CONDUCTORS	CONDUIT RUNS																	
		1	2	3	4	5	6	7	8										
VEHICLE & PEDESTRIAN HEADS, PEDESTRIAN PUSH BUTTONS, SPARES & COMMONS	12 WIRE IMSA 9 WIRE IMSA 5 WIRE IMSA 3 WIRE IMSA	1	1	1	2	1													
DETECTOR CABLE	#16/2					1	1	1	1	1	1	1	1	1	1	1	1	1	1
PHASE 1						1													
PHASE 2						2													
PHASE 4						1	1	1											
PHASE 5						1													
PHASE 6						3	3	3	3	3	3	3	3	3	3	3	3	3	3
PHASE 8						1	1	1											
TOTALS						1	1	9	5	5	4	4	4	4	4	4	4	4	4
PRE-EMPTION CABLE	4#20	1	1	1	2	1													
I.S.N.S.	#12	2	2	2	2	2	2	2	2	2	2	2	2	2	2	2	2	2	2
LIMINAIRES	#8	2	2	2	2	2	2	2	2	2	2	2	2	2	2	2	2	2	2
SIGNAL SERVICE	#6	2	2	2	2	2	2	2	2	2	2	2	2	2	2	2	2	2	2
CONDUIT SIZE		2"	2.5"	2"	2-3"	3"	3"	2.5"	2"										

NOTE:
1.) EQUESTRIAN PUSHBUTTON ON POLES F AND G

CITY OF RIVERSIDE, CALIFORNIA DEPARTMENT OF PUBLIC WORKS				TRAFFIC SIGNAL		ACCT. NO.
APPROVED BY _____ BY _____ DATE _____				APPROVED BY _____		X-379
AS-BUILT PER SIGNALIZATION MAC 12/00				DIRECTOR OF PUBLIC WORKS		
MARK	DESIGNED BY <u>BEM</u>	REVISIONS	APP'R.	DATE	DATE	SHEET 1 OF 1
	DRAWN BY <u>BEM</u>		CHECKED BY _____			FILE NAME: X379AS.DWG
SCALE: 1" = 20'						

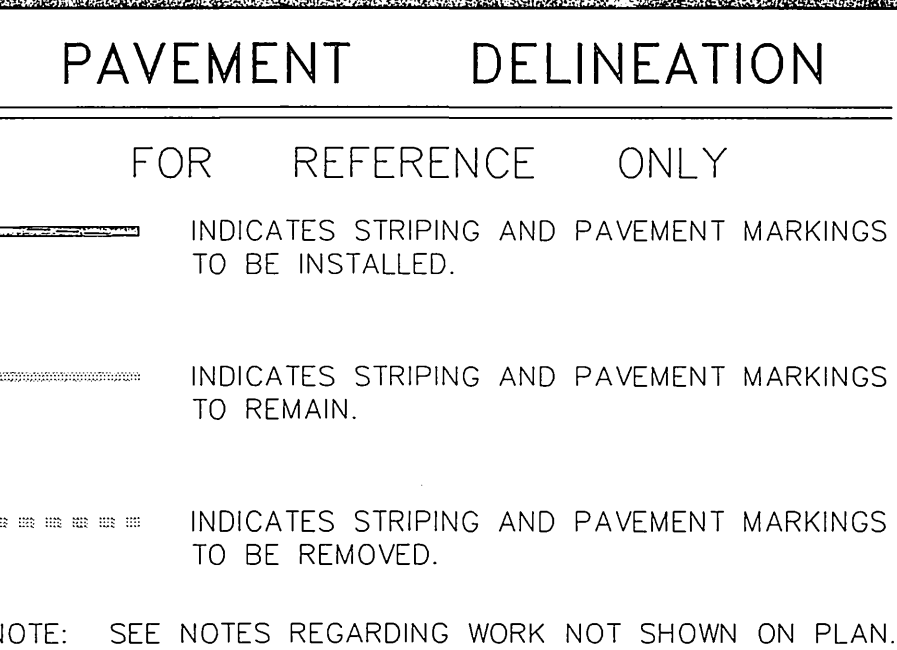
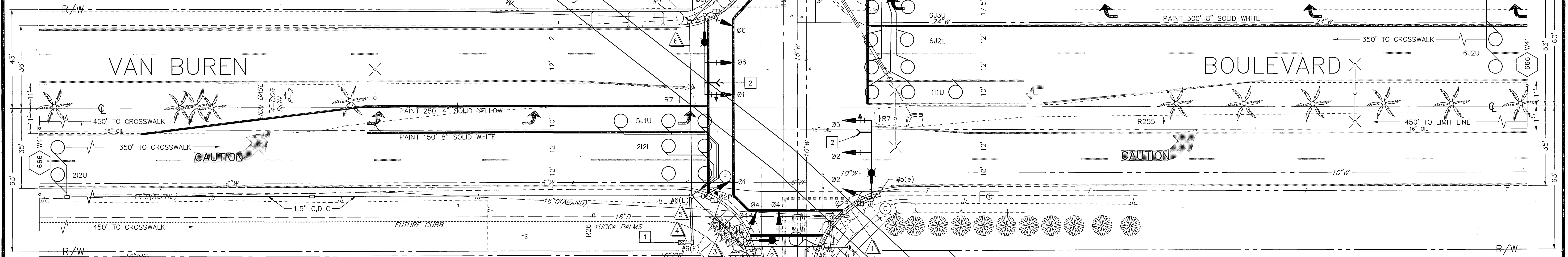
DETECTOR		SCHEDULE	
CHANNELS	LOOP DESIGNATION	NUMBER OF LOOPS	FEATURES
1	111U	3	
2	212U	2	
3	212L	4	
4	416U	3	
5	5J1U	3	
6	6J2U	2	
7	6J2L	4	
8	6J3U	2	
9	8J6U	3	



NOTE: DETECTOR UNITS SHALL BE RACK MOUNTED, 2 - CHANNEL

CONSTRUCTION NOTES

- 666 INSTALL SIGN PER CITY OF RIVERSIDE STANDARD NO. 666.
- 1 INSTALL MODEL 170 CONTROLLER UNIT AND 332 CABINET (SEE SPECIAL PROVISIONS).
- 2 INSTALL TRAFFIC SIGNAL VEHICLE PRE-EMPTION DETECTOR.



- GENERAL NOTES**
- 1 DETECTOR LOOPS SHALL BE INSTALLED IN THE PRESENCE OF THE TRAFFIC ENGINEER OR HIS REPRESENTATIVE.
 - 2 ALL SIGNING, STRIPING AND PAVEMENT MARKING REQUIREMENTS SHALL BE COMPLETED AT LEAST ONE DAY PRIOR TO TURN-ON.
 - 3 TYPICAL DETECTOR LOOP SPACING: 10' AND 15'.
 - 4 PAVEMENT DELINEATION SHOWN HEREON IS FOR REFERENCE ONLY. CITY FORCES SHALL PERFORM ALL PERMANENT PAINTING (INSTALLATION AND REMOVALS) WORK.
 - 5 SEE PLAN R-3356 FOR STREET IMPROVEMENTS.

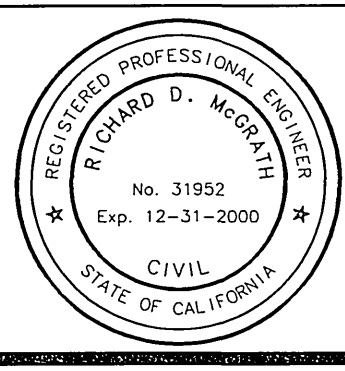
CONDUCTOR TABLE

CONTROL FUNCTION	CONDUCTORS	CONDUIT RUNS								
		1	2	3	4	5	6	7	8	9
VEHICLE & PEDESTRIAN HEADS, PEDESTRIAN PUSH BUTTONS, SPARES & COMMONS	12 WIRE IMSA 9 WIRE IMSA 5 WIRE IMSA 3 WIRE IMSA	1	1	1	2	2	1	2	2	1
DETECTOR CABLE	#16/2									
PHASE 1			1	1	1	1	1	1	1	1
PHASE 2			2	2						
PHASE 4			1	1	1	1				
PHASE 5			1	1						
PHASE 6				3	3	3	3	3	3	3
PHASE 8			1	1	1	1				
TOTALS			1	1	9	9	5	5	4	4
PRE-EMPTION CABLE	4#20	1	1	1	2	2	1			
I.I.S.N.S.	#12	2	2	2			2	2	2	
LUMINAIRES	#8	2	2	2			2	2	2	
SIGNAL SERVICE	#6	2	2	2	2					
CONDUIT SIZE		2"	2.5"	2"	2-3"	2-3"	3"	3"	2.5"	2"

- NOTE:
- 1) SEE CONTRACT SPECIAL PROVISIONS FOR ADDITIONAL INFORMATION ON I.M.S.A.
 - 2) INSTALL EQUESTRIAN PUSHBUTTON ON POLES F AND G AT 70" ABOVE GRADE; MOUNT UPSIDE DOWN.
 - 3) THE EQUESTRIAN PUSHBUTTON SHALL HAVE AN EQUESTRIAN SIGN FACE.
 - 4) SEE SPECIAL PROVISIONS FOR ADDITIONAL INFORMATION ON VEHICLE PRE-EMPTION CABLE.



ENGINEER IN RESPONSIBLE CHARGE
 Richard D. McGrath
 R.C.E. No. 31952 expires 12-31-2000
 DATE 2/24/97



MARK	REVISIONS	APPD.	DATE

CITY OF RIVERSIDE, CALIFORNIA
 DEPARTMENT OF PUBLIC WORKS

APPROVED BY: *[Signature]* DATE: 2/27/97
 PRINCIPAL ENGINEER: *[Signature]*
 P.W. INSPECTION: *[Signature]*
 TRAFFIC DIVISION: *[Signature]*
 CHIEF P.W. ENGR. *[Signature]*
 PUBLIC UTILITIES: *[Signature]*

TRAFFIC SIGNAL INSTALLATION

DUFFERIN AVENUE AND VAN BUREN BOULEVARD

ACCT. NO. 0432-541600-440302-35090

X-379

SHEET 1 OF 1

FILE NAME: X379.DWG

SCALE: 1" = 20'

POLE SCHEDULE

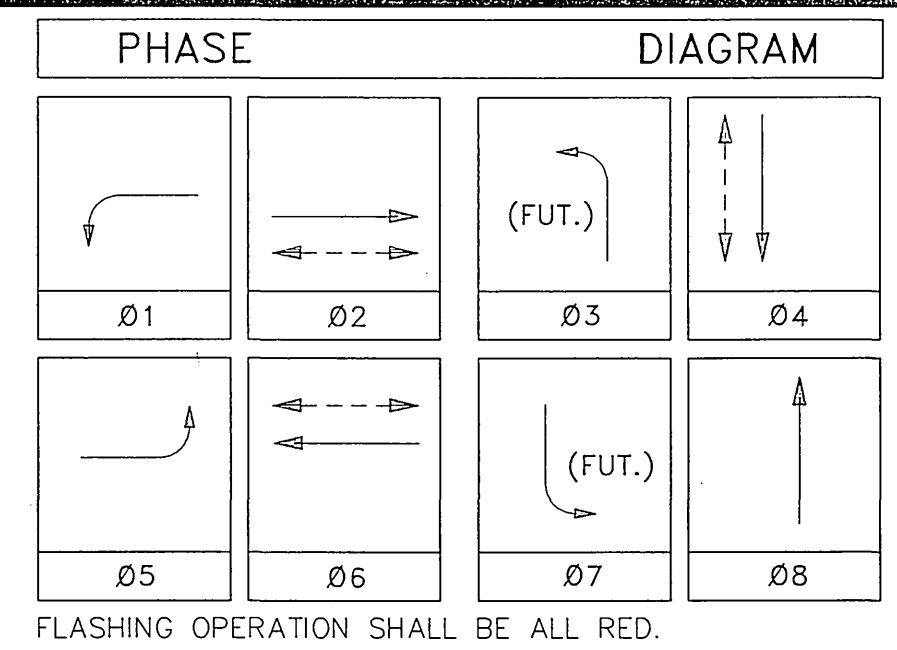
No.	TYPE	STANDARD HGT.	SIG. M.A.	LUM. M.A.	LUM. HPSV	I.S.N.S. LEGEND	SIGNAL HEAD	SIGNAL MOUNTING VEHICLE	SIGNAL MOUNTING PED	PPB PHASE
(A)	17-2-80	30'	18'	12'	250W	VAN BUREN BLVD. 2200	1W3C	MAS	SV-1-T	6
(B)	1-A	10'					1W3C	TV-1-T	SP-1-T	
(C)	24-4-80	30'	35'	12'	250W	DUFFERIN AVE. 9400	1W3C	MAS	SV-1-T	SP-1-T
(D)	PED POST	46"								2
(E)	17-2-80	30'	15'	12'	250W	VAN BUREN BLVD. 2300	1W3C	MAS	SV-1-T	SP-1-T
(F)	1-A	10'					1W3C	TV-1-T	SP-1-T	4
(G)	24-4-80	30'	35'	12'	250W	DUFFERIN AVE. 9400	1W3C	MAS	SV-1-T	SP-1-T
(H)	1-A	7'					1W3C	TV-1-T	SP-1-T	4
(I)	1-A	7'							TP-1-T	6

- NOTES:
1. PEDESTRIAN PUSHBUTTONS SHALL BE INSTALLED ON THE POLE IN THE QUADRANT NEAREST THE CROSSWALK SERVING THE PHASE.
 2. ALL VEHICULAR HEADS SHALL HAVE 12" LENSES.
 3. LUMINAIRES SHALL BE HIGH PRESSURE SODIUM VAPOR.
 4. 1A POLES SHALL BE ALUMINUM.
 5. LOCATION OF THE VEHICLE PRE-EMPTION DETECTOR ON THE MAST ARM SHALL BE AS DIRECTED IN THE FIELD BY THE CITY TRAFFIC ENGINEER OR HIS REPRESENTATIVE.
 6. POLES FOR LOCATIONS A, C, E AND G WILL BE CITY FURNISHED; SEE CONTRACT SPECIAL PROVISIONS.



- REPLACE W17 SIGN WITH W41 SIGN
- (CITY FORCES ONLY) REMOVE "STOP AHEAD" PAINT "SIGNAL AHEAD" PAVEMENT MARKINGS

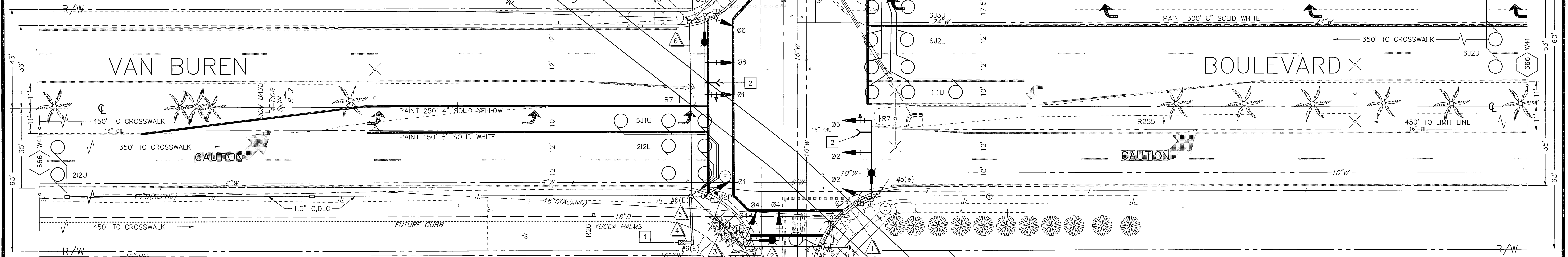
DETECTOR		SCHEDULE	
CHANNELS	LOOP DESIGNATION	NUMBER OF LOOPS	FEATURES
1	111U	3	
2	212U	2	
3	212L	4	
4	416U	3	
5	5J1U	3	
6	6J2U	2	
7	6J2L	4	
8	6J3U	2	
9	8J6U	3	



NOTE: DETECTOR UNITS SHALL BE RACK MOUNTED, 2 - CHANNEL

CONSTRUCTION NOTES

- 666 INSTALL SIGN PER CITY OF RIVERSIDE STANDARD NO. 666.
- 1 INSTALL MODEL 170 CONTROLLER UNIT AND 332 CABINET (SEE SPECIAL PROVISIONS).
- 2 INSTALL TRAFFIC SIGNAL VEHICLE PRE-EMPTION DETECTOR.



PAVEMENT DELINEATION

FOR REFERENCE ONLY

- INDICATES STRIPING AND PAVEMENT MARKINGS TO BE INSTALLED.
- INDICATES STRIPING AND PAVEMENT MARKINGS TO REMAIN.
- INDICATES STRIPING AND PAVEMENT MARKINGS TO BE REMOVED.

NOTE: SEE NOTES REGARDING WORK NOT SHOWN ON PLAN.

GENERAL NOTES

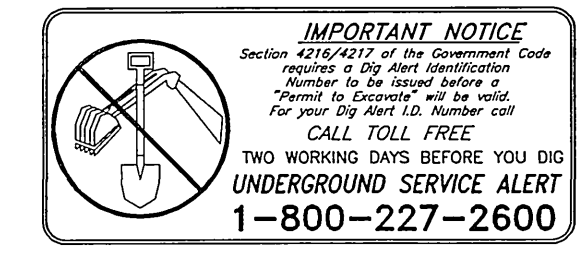
- 1 DETECTOR LOOPS SHALL BE INSTALLED IN THE PRESENCE OF THE TRAFFIC ENGINEER OR HIS REPRESENTATIVE.
- 2 ALL SIGNING, STRIPING AND PAVEMENT MARKING REQUIREMENTS SHALL BE COMPLETED AT LEAST ONE DAY PRIOR TO TURN-ON.
- 3 TYPICAL DETECTOR LOOP SPACING: 10' AND 15'.
- 4 PAVEMENT DELINEATION SHOWN HEREON IS FOR REFERENCE ONLY. CITY FORCES SHALL PERFORM ALL PERMANENT PAINTING (INSTALLATION AND REMOVALS) WORK.
- 5 SEE PLAN R-3356 FOR STREET IMPROVEMENTS.

(CITY FORCES ONLY) PAINT "SIGNAL AHEAD" PAVEMENT MARKING ADJACENT FROM W41

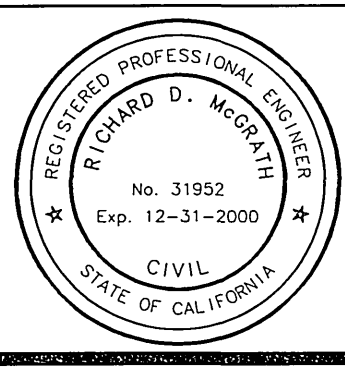
(CITY FORCES ONLY) PAINT "SIGNAL AHEAD" PAVEMENT MARKING ADJACENT FROM W41

CONDUCTOR		TABLE								
CONTROL FUNCTION	CONDUCTORS	CONDUIT RUNS								
		1	2	3	4	5	6	7	8	9
VEHICLE & PEDESTRIAN HEADS, PEDESTRIAN PUSH BUTTONS, SPARES & COMMONS	12 WIRE IMSA 9 WIRE IMSA 5 WIRE IMSA 3 WIRE IMSA	1	1	1	2	2	1	2	2	1
DETECTOR CABLE	#16/2									
PHASE 1			1	1	1	1	1	1	1	1
PHASE 2				2	2					
PHASE 4				1	1	1	1			
PHASE 5				1	1					
PHASE 6				3	3	3	3	3	3	3
PHASE 8			1	1	1	1	1			
TOTALS			1	1	9	9	5	5	4	4
PRE-EMPTION CABLE	4#20	1	1	1	2	2	1			
I.L.S.N.S.	#12	2	2	2			2	2	2	
LUMINAIRES	#8	2	2	2			2	2	2	
SIGNAL SERVICE	#6	2	2	2	2					
CONDUIT SIZE		2"	2.5"	2"	2-3"	2-3"	3"	3"	2.5"	2"

- NOTE:
- 1) SEE CONTRACT SPECIAL PROVISIONS FOR ADDITIONAL INFORMATION ON I.M.S.A.
 - 2) INSTALL EQUESTRIAN PUSHBUTTON ON POLES F AND G AT 70" ABOVE GRADE; MOUNT UPSIDE DOWN.
 - 3) THE EQUESTRIAN PUSHBUTTON SHALL HAVE AN EQUESTRIAN SIGN FACE.
 - 4) SEE SPECIAL PROVISIONS FOR ADDITIONAL INFORMATION ON VEHICLE PRE-EMPTION CABLE.



ENGINEER IN RESPONSIBLE CHARGE
 Richard D. McGrath
 R.C.E. No. 31952 expires 12/31/2000
 DATE 2/21/97



DESIGNED BY BRM DRAWN BY BDM CHECKED BY JMD

CITY OF RIVERSIDE, CALIFORNIA
 DEPARTMENT OF PUBLIC WORKS

APPROVED BY: [Signature]
 DATE: 2/27/97

TRAFFIC SIGNAL INSTALLATION
DUFFERIN AVENUE AND VAN BUREN BOULEVARD

SCALE: 1" = 20'

ACCT. NO. 0432-541600-440302-35090
X-379
 SHEET 1 OF 1
 FILE NAME: X379.DWG

POLE		SCHEDULE								
No.	TYPE	STANDARD HGT.	SIG. M.A.	LUM. M.A.	LUM. HPSV	I.S.N.S. LEGEND	SIGNAL HEAD	SIGNAL MOUNTING VEHICLE	SIGNAL MOUNTING PED	PPB PHASE
A	17-2-80	30'	18'	12'	250W	VAN BUREN BLVD. 2200	1W3C	MAS	SV-1-T	6
B	1-A	10'					1W3C	TV-1-T	SP-1-T	
C	24-4-80	30'	35'	12'	250W	DUFFERIN AVE. 9400	1W3C	MAS	SV-1-T	SP-1-T
D	PED POST	46"								2
E	17-2-80	30'	15'	12'	250W	VAN BUREN BLVD. 2300	1W3C	MAS	SV-1-T	SP-1-T
F	1-A	10'					1W3C	TV-1-T	SP-1-T	4
G	24-4-80	30'	35'	12'	250W	DUFFERIN AVE. 9400	1W3C	MAS	SV-1-T	SP-1-T
H	1-A	7'					1W3C	TV-1-T	SP-1-T	4
I	1-A	7'					1W3C	SV-1-T	SP-1-T	4
J	1-A	7'					1W3C	TV-1-T	SP-1-T	4
K	1-A	7'					1W3C	SV-1-T	SP-1-T	4
L	1-A	7'					1W3C	TV-1-T	SP-1-T	4
M	1-A	7'					1W3C	SV-1-T	SP-1-T	4
N	1-A	7'					1W3C	TV-1-T	SP-1-T	4
O	1-A	7'					1W3C	SV-1-T	SP-1-T	4
P	1-A	7'					1W3C	TV-1-T	SP-1-T	4
Q	1-A	7'					1W3C	SV-1-T	SP-1-T	4
R	1-A	7'					1W3C	TV-1-T	SP-1-T	4
S	1-A	7'					1W3C	SV-1-T	SP-1-T	4
T	1-A	7'					1W3C	TV-1-T	SP-1-T	4
U	1-A	7'					1W3C	SV-1-T	SP-1-T	4
V	1-A	7'					1W3C	TV-1-T	SP-1-T	4
W	1-A	7'					1W3C	SV-1-T	SP-1-T	4
X	1-A	7'					1W3C	TV-1-T	SP-1-T	4
Y	1-A	7'					1W3C	SV-1-T	SP-1-T	4
Z	1-A	7'					1W3C	TV-1-T	SP-1-T	4

- NOTES:
1. PEDESTRIAN PUSHBUTTONS SHALL BE INSTALLED ON THE POLE IN THE QUADRANT NEAREST THE CROSSWALK SERVING THE PHASE.
 2. ALL VEHICULAR HEADS SHALL HAVE 12" LENSES.
 3. LUMINAIRES SHALL BE HIGH PRESSURE SODIUM VAPOR.
 4. 1A POLES SHALL BE ALUMINUM.
 5. LOCATION OF THE VEHICLE PRE-EMPTION DETECTOR ON THE MAST ARM SHALL BE AS DIRECTED IN THE FIELD BY THE CITY TRAFFIC ENGINEER OR HIS REPRESENTATIVE.
 6. POLES FOR LOCATIONS A, C, E AND G WILL BE CITY FURNISHED; SEE CONTRACT SPECIAL PROVISIONS.