

CONTROL FUNCTION	CONDUCTOR	CONDUCTOR RUNS					
		1	2	3	4	5	6
VEHICLE & PEDESTRIAN HEADS, PEDESTRIAN	12 WIRE IMSA	1	2	3	-	-	-
PUSH BUTTONS, SPARES & COMMONS	9 WIRE IMSA	-	-	1	1	1	1
	5 WIRE IMSA	1	1	1	1	-	-
	3 WIRE IMSA	-	1	4	3	2	1
DETECTOR CABLE	#16/2	-	2	2	-	-	-
Ø2	#16/2	-	-	1	1	-	-
Ø4	#16/2	-	-	1	1	-	-
Ø5	#16/2	-	-	3	3	3	3
I.I.S.N.S.	#12	-	2	-	-	-	-
FLASHING BEACON	#10	-	-	2	2	2	2
LUMINAIRES	#8	2	2	-	2	2	2
SIGNAL SERVICE	#6	-	-	2	-	-	-
INTERCONNECT CABLE	-	-	-	1	-	-	-
E.V.P. CABLE	-	1	1	2	-	-	-
CONDUIT SIZE		2"	3"	2-3"	3"	3"	2"

NOTE: SEE CONTRACT SPECIAL PROVISIONS FOR ADDITIONAL INFORMATION ON I.M.S.A. CABLE.

LOOP DESIGNATION	NUMBER OF LOOPS	FEATURES
2J2U	2	● ■
2J2L	4	
4J6U	4	●
511U	4	
612U	2	● ■
612L	4	
6J3U	2	▲

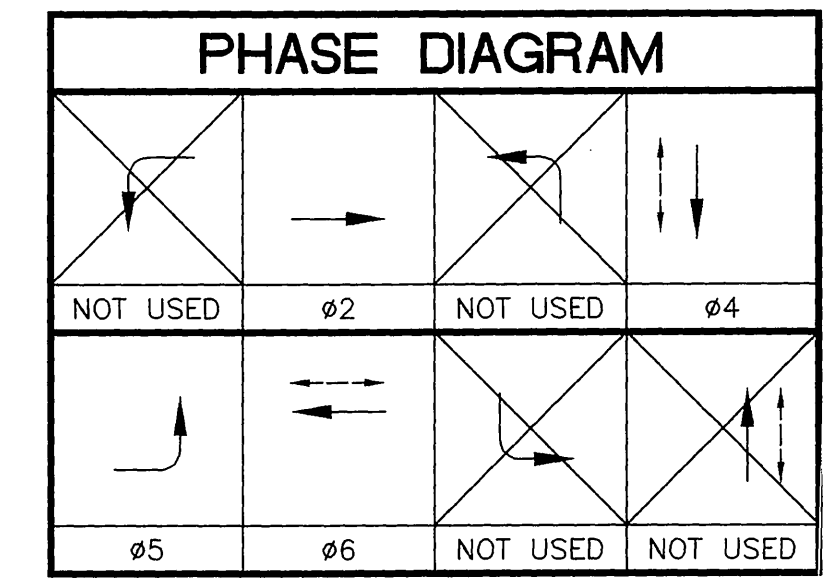
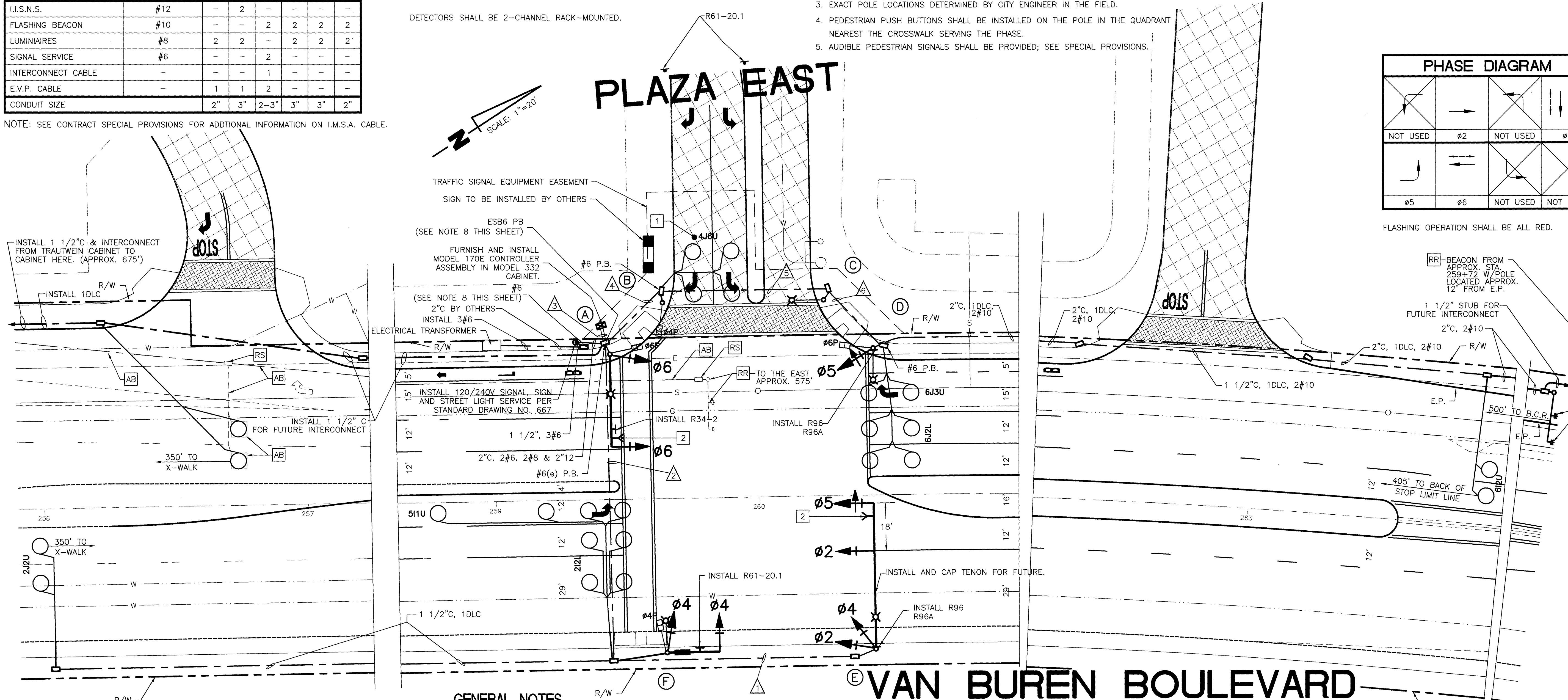
- SAMPLING (FUTURE)
- CALL-HOLD (EXTENSION)
- ▲ DELAY

DETECTORS SHALL BE 2-CHANNEL RACK-MOUNTED.

NO.	TYPE	HEIGHT	M.A.	LUMINAIRE	I.I.S.N.S.	SIGNAL MOUNTINGS		BPB	PPB	REMARKS		
						MA	VEHICLE					
(A)	24-3-80	30'	35'	12'	250	MAS	SV-1-T	-	4	NE	-	
(B)	1A	7'	-	-	-	-	TP-1-T	-	2	SE	-	
(C)	15	30'	-	12'	250	-	SV-1-T	SP-1-T	6	SE	-	
(D)	15	30'	-	-	-	-	SV-1-T	SP-1-T	-	-	-	
(E)	29-5-80	30'	55'	12'	250	MAS	SV-2-T	-	-	-	"F" DIMENSION 18'	
(F)	17-2-80	30'	20'	12'	250	MAS	SV-1-T	SP-1-T	2	NW	4	SW

- NOTES:
1. ALL VEHICLES HEADS SHALL HAVE 12" LENSES.
 2. ALL LEFT TURN HEADS SHALL HAVE ALL ARROWS.
 3. EXACT POLE LOCATIONS DETERMINED BY CITY ENGINEER IN THE FIELD.
 4. PEDESTRIAN PUSH BUTTONS SHALL BE INSTALLED ON THE POLE IN THE QUADRANT NEAREST THE CROSSWALK SERVING THE PHASE.
 5. AUDIBLE PEDESTRIAN SIGNALS SHALL BE PROVIDED; SEE SPECIAL PROVISIONS.

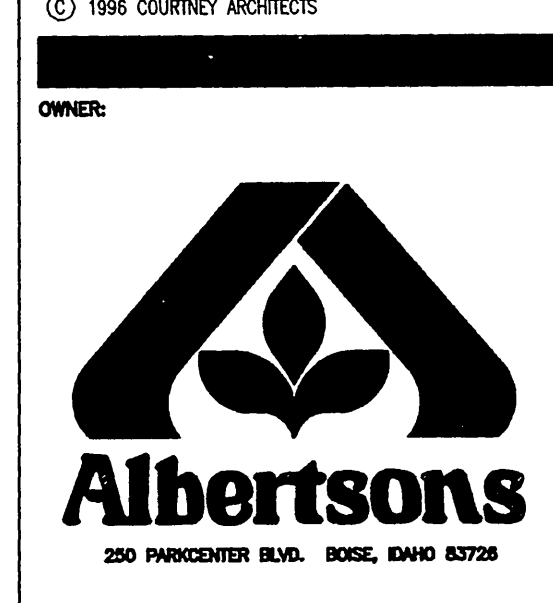
BLOCK NUMBER PER RIVERSIDE CITY STANDARD DWG 6628.



REVISIONS:

△	DATE	BY
△	DATE	BY
△	DATE	BY
△	DATE	BY
△	DATE	BY

COPYRIGHT NOTICE:
 This drawing and specifications are the property of the original project and shall not be reproduced, stored in a retrieval system or used in any manner, in whole or in part, without the written consent of the original project. If you are a contractor, you shall contact the original project for all specifications and shall coordinate with the original project for the completion of these specifications.



PROJECT: TRAFFIC SIGNAL IMPROVEMENTS FOR ORANGECREST PLAZA
 LOCATION: N.E.C. VAN BUREN BOULEVARD & TRAUWEIN ROAD RIVERSIDE, CA



(805) 541-3150
 (805) 541-3173 fax
 (805) 541-3273 modem

656 Santa Rosa Street, Suite 3A
 San Luis Obispo, California 93401

PROJECT NO. 742-96-101
 PLDT DATE: 9/27/96
 PATHNAME: C:\742-96-101-SHT3.DWG

CONSTRUCTION NOTES

- AB ABANDON. IF APPLIED TO CONDUIT, REMOVE CONDUCTORS.
- RR REMOVE AND REUSE EQUIPMENT.
- RS REMOVE AND SALVAGE EQUIPMENT.
- 1 INSTALL PREFORMED LOOP DETECTORS IN AGGREGATE BASE PRIOR TO INSTALLATION OF TEXTURED CONCRETE. CO-ORDINATE SCHEDULING WITH PAVING CONTRACTOR. CONNECT LANE RELATED LOOP DETECTORS IN PULL BOX.
- 2 INSTALL EVP DETECTOR ON MAST ARM AND INSTALL EVP CABLE FROM DETECTOR TO CONTROLLER CABINET.

GENERAL NOTES

1. ALL WORK, MATERIAL AND EQUIPMENT SHALL CONFORM TO THE REQUIREMENTS OF THE STATE OF CALIFORNIA, DEPARTMENT OF TRANSPORTATION (CALTRANS) STANDARD PLANS AND SPECIFICATIONS DATED JULY, 1992 AND CITY REQUIREMENTS.
2. UTILITIES SHOWN ON THESE PLANS ARE CORRECT AND ACCURATE TO THE EXTENT OF AVAILABLE RECORDS AND KNOWLEDGE. THE CONTRACTOR, HOWEVER, IS REQUIRED TO TAKE STEPS TO ASCERTAIN THE EXACT LOCATION OF UNDERGROUND FACILITIES PRIOR TO DOING WORK THAT MAY DAMAGE SUCH FACILITIES OR INTERFERE WITH THEIR SERVICE. PHONE UNDERGROUND SERVICE ALERT AT: 800-422-4133 A MINIMUM OF TWO WORKING DAYS PRIOR TO THE START OF ANY EXCAVATION.
3. EACH NEW CONDUCTOR IN EACH NEW PULLBOX SHALL BE IDENTIFIED AS DETAILED IN THE CONDUCTOR SCHEDULE WITH A PERMANENT BAND IN PULLBOXES AND NEAR THE END OF EACH CONDUCTOR WHERE CONDUCTORS ARE TERMINATED. PERMANENT IDENTIFICATION BANDS SHALL BE EMBOSSED ALUMINUM FOIL TYPE WITH PRESSURE SENSITIVE OIL RESISTANT BACKING.
4. 48 HRS. PRIOR TO BEGINNING OF CONSTRUCTION, THE CONTRACTOR SHALL CONTACT THE CITY OF RIVERSIDE @ (909) 351-6096 FOR INSPECTION.
5. ALL SIGNING, STRIPING, AND PAVEMENT MARKING REQUIREMENTS (SHEET 2 OF 2, XL-393) SHALL BE COMPLETED AT LEAST ONE DAY PRIOR TO TURN-ON.
6. THE CITY ENGINEER OR HIS REPRESENTATIVE SHALL APPROVE THE EXACT LOCATION OF ALL EQUIPMENT PLACEMENT IN THE FIELD PRIOR TO INSTALLATION. CONTRACTOR SHALL PATCH/CONFLICTING UTILITIES AS DIRECTED BY ENGINEER.
7. DETECTOR LOOPS SHALL BE INSTALLED IN THE PRESENCE OF THE TRAFFIC ENGINEER OR HIS REPRESENTATIVE. TYPICAL DETECTOR LOOP SPACING: 10', 15', AND 30' (WHERE APPLICABLE).
8. THE CONTRACTOR SHALL FURNISH ALL CIRCUIT BREAKERS TYPES AS SPECIFIED:
 A: SQUARE D CABINET LOAD CENTER-SQD006-12RB
 B: 30 AMP BREAKER (LUMINAIRES) D.P.#50D
 C: 40 AMP BREAKER (SIGNALS) S.P.#50D QD
 D: 15 AMP BREAKER (I.S.N.S.) S.P.#50D QD
9. SEE STREET IMPROVEMENT PLANS FOR HANDICAP RAMPS AND DEPRESSION AND CONSTRUCTION.
10. THE CONTRACTOR SHALL OBTAIN ALL NECESSARY PERMITS AND NOTIFY ALL UTILITY COMPANIES A MINIMUM OF 48 HOURS PRIOR TO THE START OF CONSTRUCTION.
11. THIS WORK REQUIRES A "STREET OPENING" PERMIT OBTAINABLE AT THE PUBLIC WORKS DEPARTMENT. CHARGES WILL BE \$49.50 (MOBILIZATION) AND \$38.50 PER/HR. FOR INSPECTION.
12. CONDUCTOR SCHEDULE IS FURNISHED AS AN INSTALLATION GUIDE ONLY. IT SHALL BE THE CONTRACTOR'S RESPONSIBILITY TO PROVIDE THE CORRECT CONDUCTORS REQUIRED FOR THE INTENDED OPERATION.

Underground Service Alert
 CALL TOLL FREE
 1-800-227-2600
 TWO WORKING DAYS BEFORE YOU DIG

PRIVATE ENGINEERING NOTE
 CONSTRUCTION CONTRACTOR AGREES THAT IN ACCORDANCE WITH GENERALLY ACCEPTED CONSTRUCTION PRACTICES, CONSTRUCTION CONTRACTOR WILL BE REQUIRED TO ASSUME SOLE AND COMPLETE RESPONSIBILITY FOR JOB SITE CONDITIONS DURING THE COURSE OF CONSTRUCTION OF THE PROJECT, INCLUDING SAFETY OF ALL PERSONS AND PROPERTY; THAT THIS REQUIREMENT SHALL BE MADE TO APPLY CONTINUOUSLY AND NOT BE LIMITED TO NORMAL WORKING HOURS, AND CONSTRUCTION CONTRACTOR FURTHER AGREES TO DEFEND, INDEMNIFY AND HOLD DESIGN PROFESSIONAL HARMLESS FROM ANY AND ALL LIABILITY, REAL OR ALLEGED, IN CONNECTION WITH THE PERFORMANCE OF WORK ON THIS PROJECT, EXCEPTING LIABILITY ARISING FROM THE SOLE NEGLIGENCE OF DESIGN PROFESSIONAL.

RKJK
 DESIGN GROUP, INCORPORATED
 TRAFFIC ENGINEERING - DESIGN SERVICES
 Robert Kahn, R.C.E. No. 20285, Exp. 9/30/97
 4101 Birch St., Suite 230 • Newport Beach, CA 92660
 Phone: (714) 474-1031 Fax: (714) 474-0802

MARK	REVISIONS	APPR.	DATE

DESIGNED BY: BW DRAWN BY: BW CHECKED BY: RK

CITY OF RIVERSIDE, CALIFORNIA
 DEPARTMENT OF PUBLIC WORKS
 APPROVED BY: [Signature] DATE: 10/1/96
 PRINCIPAL ENGINEER: [Signature] DATE: 10/1/96
 P.W. INSPECTION: [Signature] DATE: 10/1/96
 CHIEF P.W. ENGINEER: [Signature] DATE: 10/1/96
 PUBLIC UTILITIES: [Signature] DATE: 10/1/96

TRAFFIC SIGNAL
 VAN BUREN BLVD.
 @
 PLAZA EAST
 SCALE: 1" = 20'

ACCT. NO. XXXX
 X-399
 SHEET 1 OF 1
 FILE NAME: SHT3.DWG