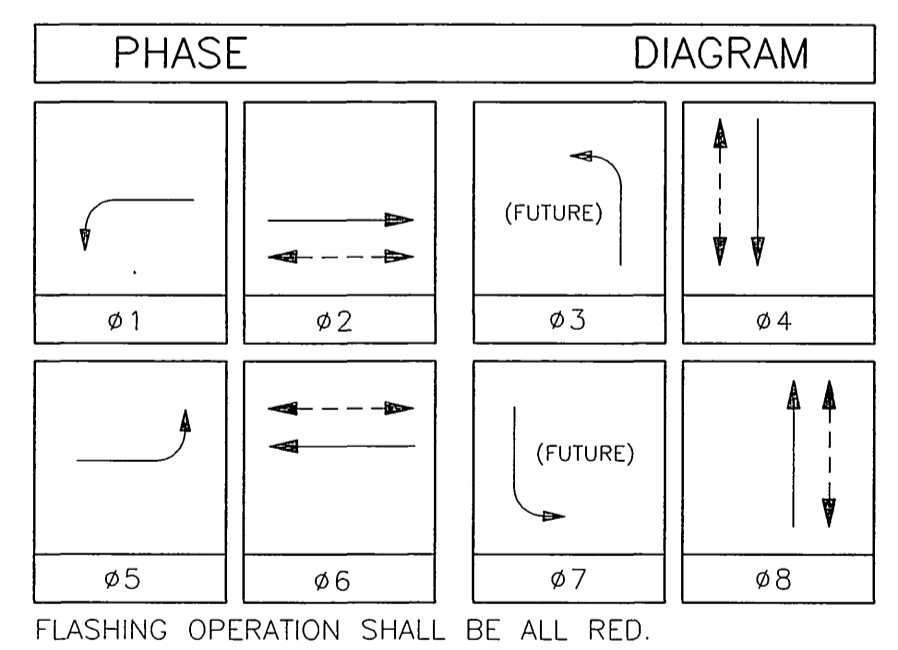
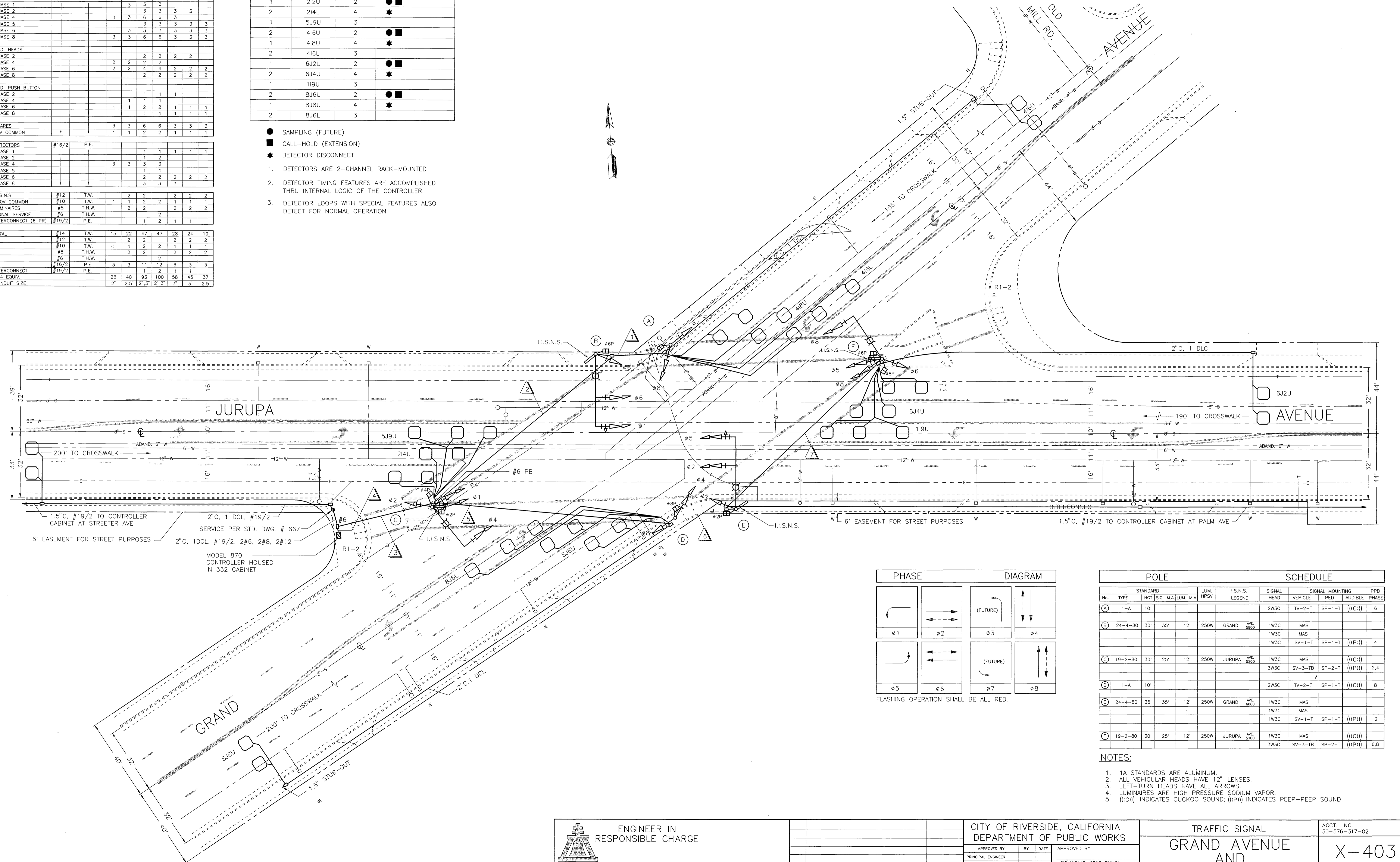


CONDUCTOR		SCHEDULE											
CONTROL FUNCTION	CONDUCTORS	RUNS											
		SIZE	INSULATION	▲▲▲			▲▲▲			▲▲▲			
VEHICLE HEADS	#14	T.W.											
PHASE 1					3	3	3						
PHASE 2					3	3	6	6	3	3			
PHASE 4						3	3	3	3	3			
PHASE 6					3	3	3	3	3	3			
PHASE 8					3	3	6	6	3	3			
PED. HEADS													
PHASE 2						2	2	2	2	2			
PHASE 4						2	2	4	4	2	2		
PHASE 6						2	2	2	2	2			
PHASE 8						2	2	2	2	2			
PED. PUSH BUTTON													
PHASE 2						1	1	1					
PHASE 4						1	1	1					
PHASE 6						1	1	2	1	1	1		
PHASE 8						1	1	1	1	1			
SPARES						3	3	6	6	3	3		
12V COMMON						1	1	2	2	1	1		
DETECTORS	#16/2	P.E.											
PHASE 1						1	1	1	1	1			
PHASE 2						1	2						
PHASE 4						3	3	3					
PHASE 5								1	1				
PHASE 6								2	2	2			
PHASE 8								3	3	3			
I.I.S.N.S.	#12	T.W.				2	2			2	2		
120V COMMON	#10	T.W.				1	1	2	2	1	1		
LUMINAIRES	#8	T.H.W.				2	2			2	2		
SIGNAL SERVICE	#6	T.H.W.								2			
INTERCONNECT (6 PR)	#19/2	P.E.						1	2	1	1		
TOTAL	#14	T.W.	15	22	47	47	28	24	19				
	#12	T.W.	2	2		2	2	2					
	#10	T.W.	1	1	2	2	1	1					
	#8	T.H.W.	2	2		2	2	2					
	#6	T.H.W.				2							
	#16/2	P.E.	3	3	11	12	6	3	3				
INTERCONNECT	#19/2	P.E.				1	2	1	1				
#14 EQUIV.			26	40	93	100	58	45	37				
CONDUIT SIZE			2"	2.5"	2.5"	2.5"	3"	3"	2.5"				

DETECTOR SCHEDULE			
CHANNELS	LOOP DESIGNATION	NUMBER OF LOOPS	FEATURES
1	2I2U	2	● ■
2	2I4L	4	★
1	5J9U	3	
2	4I6U	2	● ■
1	4I8U	4	★
2	4I6L	3	
1	6J2U	2	● ■
2	6J4U	4	★
1	1I9U	3	
2	8J6U	2	● ■
1	8J8U	4	★
2	8J6L	3	

● SAMPLING (FUTURE)
 ■ CALL-HOLD (EXTENSION)
 ★ DETECTOR DISCONNECT

- DETECTORS ARE 2-CHANNEL RACK-MOUNTED
- DETECTOR TIMING FEATURES ARE ACCOMPLISHED THRU INTERNAL LOGIC OF THE CONTROLLER.
- DETECTOR LOOPS WITH SPECIAL FEATURES ALSO DETECT FOR NORMAL OPERATION



POLE SCHEDULE										
No.	TYPE	STANDARD HGT.	SIG. MA.	LUM. MA.	LUM. HPSV	I.S.N.S. LEGEND	SIGNAL HEAD	VEHICLE	SIGNAL MOUNTING	PPB
(A)	1-A	10'					2W3C	TV-2-T	SP-1-T	((IC)) 6
(B)	24-4-80	30'	35'	12'	250W	GRAND AVE 5900	1W3C	MAS		
							1W3C	SV-1-T	SP-1-T	((IP)) 4
(C)	19-2-80	30'	25'	12'	250W	JURUPA AVE 5900	1W3C	MAS		((IC))
							3W3C	SV-3-TB	SP-2-T	((IP)) 2,4
(D)	1-A	10'					2W3C	TV-2-T	SP-1-T	((IC)) 8
(E)	24-4-80	35'	35'	12'	250W	GRAND AVE 6000	1W3C	MAS		
							1W3C	SV-1-T	SP-1-T	((IP)) 2
(F)	19-2-80	30'	25'	12'	250W	JURUPA AVE 5100	1W3C	MAS		((IC))
							3W3C	SV-3-TB	SP-2-T	((IP)) 6,8

- NOTES:
- 1A STANDARDS ARE ALUMINUM.
 - ALL VEHICULAR HEADS HAVE 12" LENSES.
 - LEFT-TURN HEADS HAVE ALL ARROWS.
 - LUMINAIRES ARE HIGH PRESSURE SODIUM VAPOR.
 - ((IC)) INDICATES CUCKOO SOUND; ((IP)) INDICATES PEEP-PEEP SOUND.

ENGINEER IN RESPONSIBLE CHARGE
 RICHARD D. McGRATH
 R.C.E. NO. 31952 EXPIRES _____
 DATE _____

CITY OF RIVERSIDE, CALIFORNIA DEPARTMENT OF PUBLIC WORKS			
APPROVED BY	BY	DATE	APPROVED BY
PRINCIPAL ENGINEER			DIRECTOR OF PUBLIC WORKS
P.W. INSPECTION			
TRAFFIC DIVISION			
CHIEF P.W. ENGR.			
PUBLIC UTILITIES			

TRAFFIC SIGNAL
 GRAND AVENUE
 AND
 JURUPA AVENUE
 SCALE: 1" = 20'

ACCT. NO.
30-576-317-02

X-403
 SHEET 1 OF 1
 FILE NAME: X403.DWG