

CONDUCTOR SCHEDULE

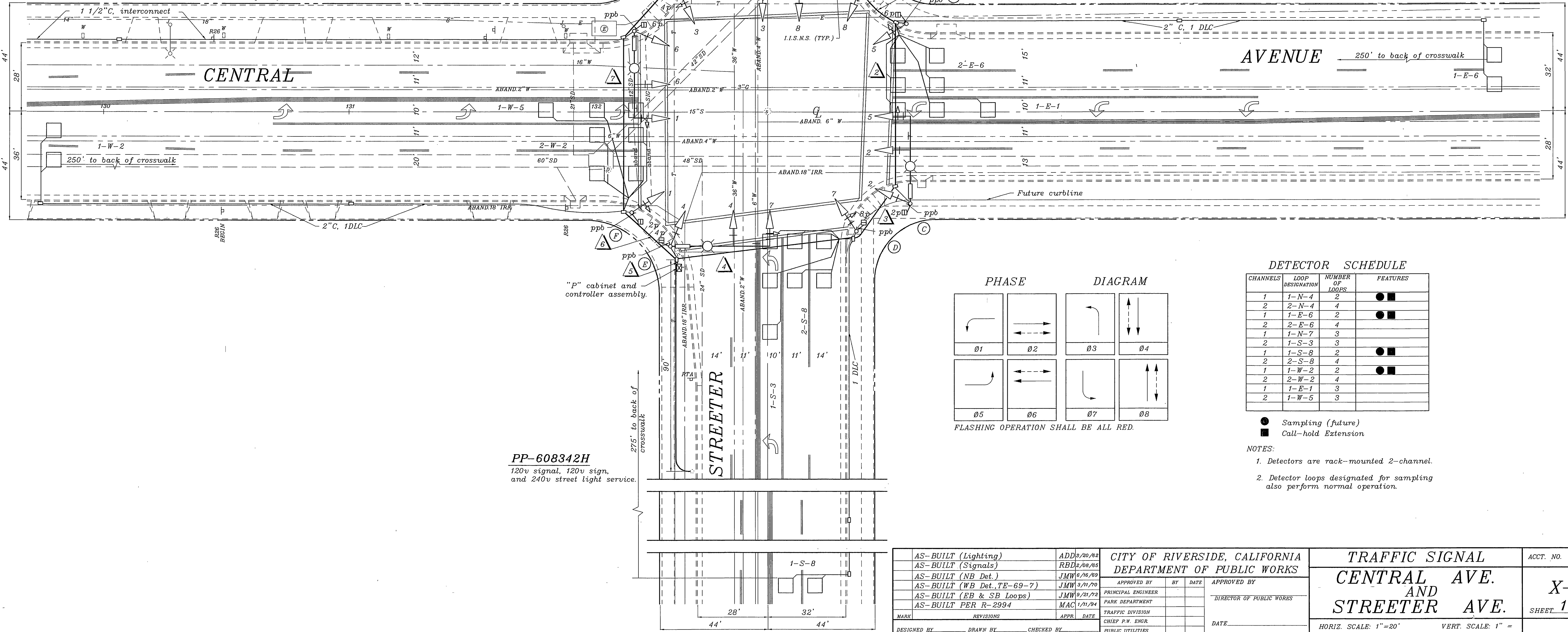
CONTROL FUNCTION	CONDUCTORS	RUNS							
		1	2	3	4	5	6	7	8
VEHICLE HEADS	#14 T.W.	-	-	-	-	-	-	-	-
PHASE 1				3	3	3	3	3	3
PHASE 2				3	3	3	3	3	3
PHASE 3		3	3	3	3	3	3	3	3
PHASE 4				3	3	3	3	3	3
PHASE 5				3	3	3	3	3	3
PHASE 6				3	3	3	3	3	3
PHASE 7				3	3	3	3	3	3
PHASE 8		3	3	3	3	3	3	3	3
PED HEADS									
PHASE 2			2	2	4				
PHASE 4				4	2	2	2		
PHASE 6		2	2	2	4	2	2		
PHASE 8		2	2	2	2	2			
PED PUSH BUTTON									
PHASE 2				1	2				
PHASE 4				2	2	1			
PHASE 6		1	1	1	1	2	1	1	1
PHASE 8		1	2	2	2				
SPARES		3	3	3	3	6	3	3	3
12V COMMON		1	1	1	1	2	1	1	1
DETECTORS	#12/2 P.E.			1	1	1	1		
PHASE 1					2	2			
PHASE 2					1	1			
PHASE 3					2	2	2	2	
PHASE 4					1	1			
PHASE 5					2	2	2		
PHASE 6		2	2	2	2				
PHASE 7					1	1	1	1	
PHASE 8					2	2			
I.I.S.N.S.	#12 T.W.	2	2	2	2	2	2		
120V COMMON	#10 T.W.	1	1	1	1	2	1	1	1
LUMINAIRES	#8 T.H.W.	2	2	2	2	2	2		
SIGNAL SERVICE INTERCONNECT	#6 T.H.W.					2			
#20 P.E.						1	1	1	
TOTAL	#14 T.W.	13	19	25	29	57	20	19	10
#12 T.W.		2	2	2	2	2	2		
#10 T.W.		1	1	1	1	2	1	1	1
#8 T.H.W.		2	2	2	2	2	2		
#6 T.H.W.						2			
#12/2 P.E.		1	1	4	12	8	3	3	
#20 P.E.						1	1	1	
#14 EQUIV.		21.5	36.5	42.5	55.5	107	49.5	39.5	20.5
CONDUIT SIZE		2"	2"	2 1/2"	3"	2-3"	3"	2 1/2"	2"

See Plan XL-235 for additional interconnect.
 1. Interconnect cable is 6 pair 20 gauge.
 2. Runs 4 & 7 have a depth of 12".

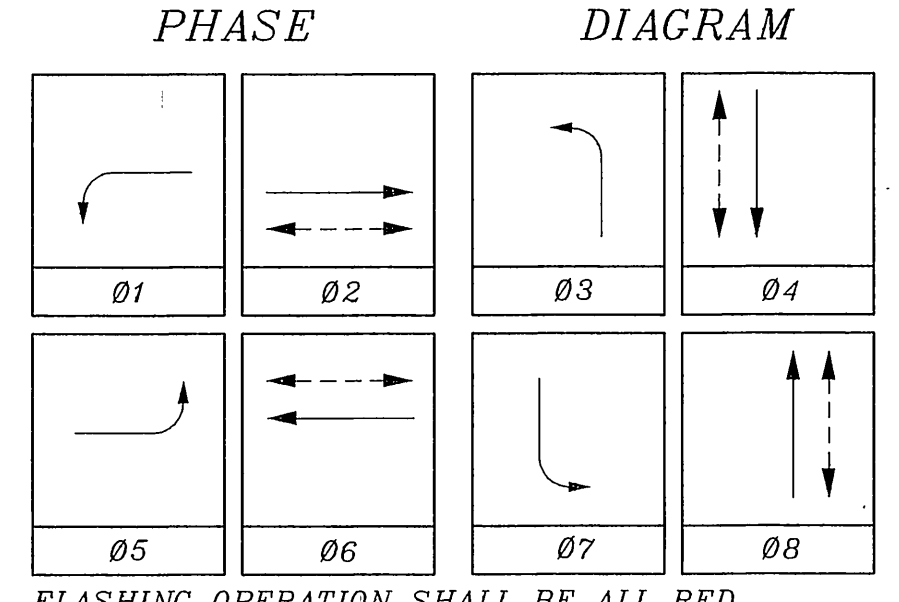
POLE SCHEDULE

No.	TYPE	STANDARD			LUM. HPSV	I.S.N.S. LEGEND	SIGNAL HEAD	SIGNAL MOUNTING VEHICLE	PPB PHASE	REMARKS
		HCT	SIG. M.A.	LUM. M.A.						
(A)	26-4-80	30'	40'	12'	250w	CENTRAL AV 6200	1W3C	MAS		
							1W3C	MAS		
							1W3C	SV-1-T	SP-1-T	6
(B)	1A	10'					1W3C	TV-1-T	SP-1-T	8
(C)	24-4-80	30'	35'	12'	250w	STREETER AV 6500	1W3C	MAS		
							1W3C	MAS		
							1W3C	SV-1-T	SP-1-T	8
(D)	1A	10'					1W3C	TV-1-T	SP-1-T	2
(E)	26-4-80	30'	40'	12'	250w	CENTRAL AV 6200	1W3C	MAS		Luminaire arm is straight.
							1W3C	MAS		
							1W3C	SV-1-T	SP-1-T	2
(F)	1A	10'					1W3C	TV-1-T	SP-1-T	4
(G)	24-4-80	30'	35'	12'	250w	STREETER AV 6500	1W3C	MAS		
							1W3C	MAS		
							1W3C	SV-1-T	SP-1-T	4
(H)	1A	10'					1W3C	TV-1-T	SP-1-T	6

NOTE:
 1. All left-turn indications have all arrows.
 2. All vehicular heads have 12" lenses.
 3. Luminaires are High Pressure Sodium Vapor.



PP-608342H
 120v signal, 120v sign, and 240v street light service.



DETECTOR SCHEDULE

CHANNELS	LOOP DESIGNATION	NUMBER OF LOOPS	FEATURES
1	1-N-4	2	● ■
2	2-N-4	4	● ■
1	1-E-6	2	● ■
2	2-E-6	4	● ■
1	1-N-7	3	● ■
2	1-S-3	3	● ■
1	1-S-8	2	● ■
2	2-S-8	4	● ■
1	1-W-2	2	● ■
2	2-W-2	4	● ■
1	1-E-1	3	● ■
2	1-W-5	3	● ■

● Sampling (future)
 ■ Call-hold Extension
 NOTES:
 1. Detectors are rack-mounted 2-channel.
 2. Detector loops designated for sampling also perform normal operation.

AS-BUILT (Lighting)	ADD 8/20/82	CITY OF RIVERSIDE, CALIFORNIA DEPARTMENT OF PUBLIC WORKS	TRAFFIC SIGNAL	ACCT. NO.	
AS-BUILT (Signals)	RBD 2/08/85		APPROVED BY _____ DATE _____ PRINCIPAL ENGINEER _____ PARK DEPARTMENT _____ TRAFFIC DIVISION _____ CHIEF P.W. ENGR _____ PUBLIC UTILITIES _____	CENTRAL AVE. AND STREETER AVE.	X-404 SHEET 1 OF 1
AS-BUILT (NB Det.)	JMW 6/16/89				
AS-BUILT (WB Det. TE-69-7)	JMW 3/11/70				
AS-BUILT (EB & SB Loops)	JMW 9/21/72				
AS-BUILT PER R-2994	MAC 1/11/84				
MARK REVISIONS	APPR. DATE	DATE			
DESIGNED BY _____	DRAWN BY _____	CHECKED BY _____	HORIZ. SCALE: 1"=20'	VERT. SCALE: 1"=	