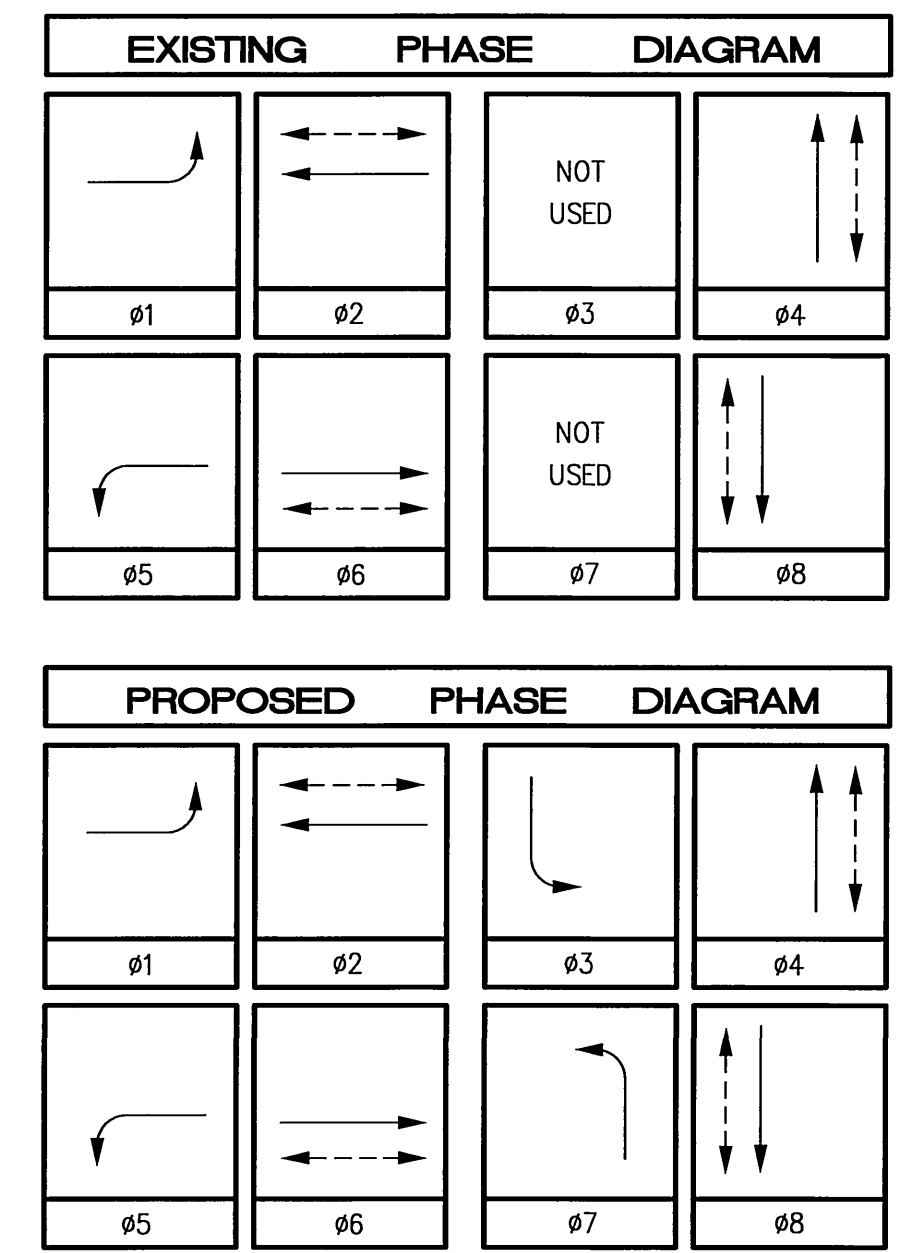


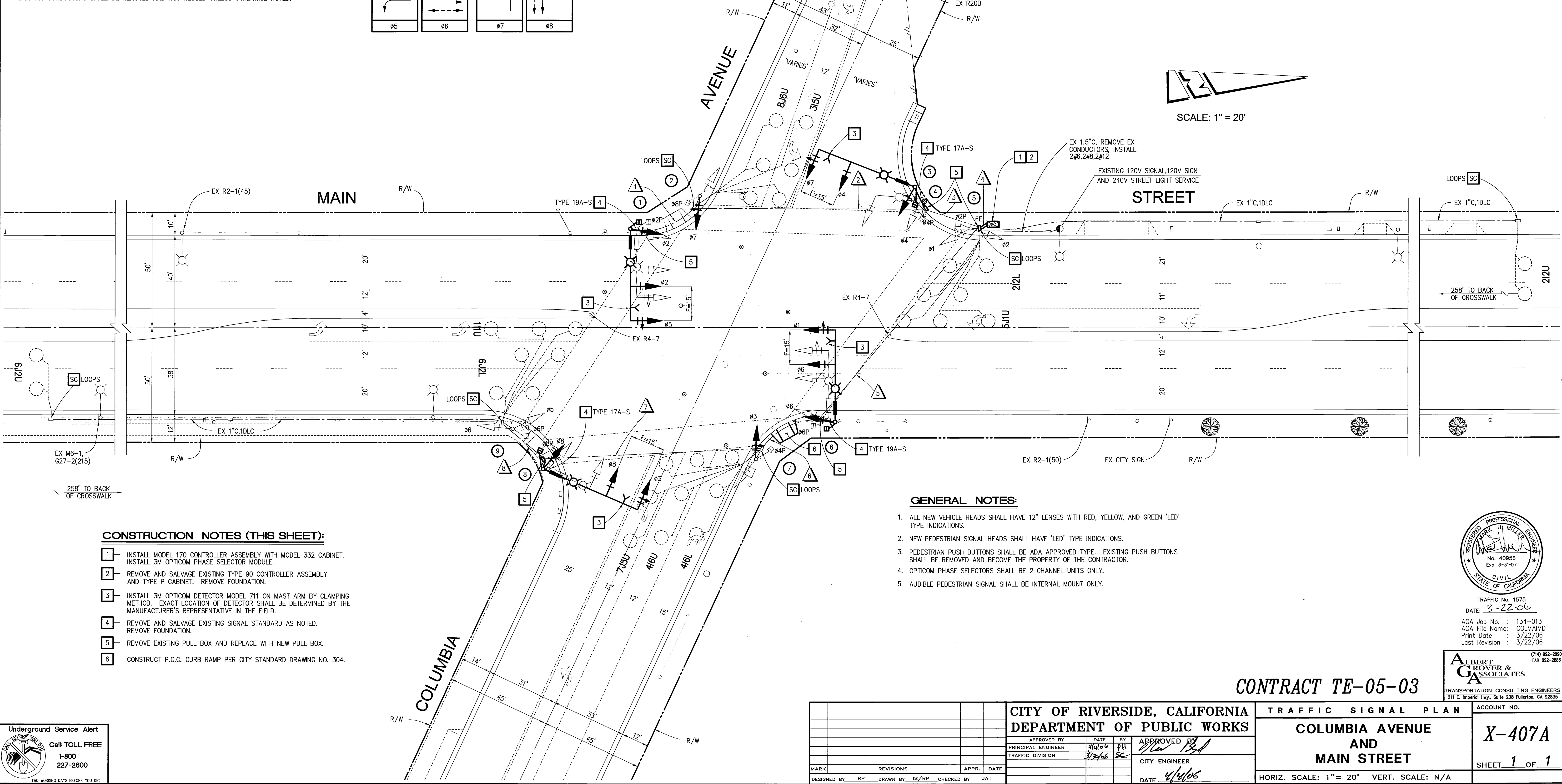
CONDUCTOR		TABLE							
CONTROL FUNCTION	CONDUCTORS	CONDUCTOR RUNS							
		1	2	3	4	5	6	7	8
VEHICLE & PEDESTRIAN HEADS, PEDESTRIAN PUSH BUTTONS, SPARES & COMMONS	12 CONDUCTOR IMSA	1	2	3	8	4	3	2	1
	3 CONDUCTOR IMSA	1	2	3	8	4	3	2	1
DETECTOR CABLE #16/2		-	-	-	1	1	1	1	1
PHASE 1		-	-	-	2	-	-	-	-
PHASE 2		-	1	1	1	-	-	-	-
PHASE 3		-	-	-	2	2	2	-	-
PHASE 4		-	-	-	1	-	-	-	-
PHASE 5		-	-	-	2	2	2	2	2
PHASE 6		-	-	-	1	1	1	-	-
PHASE 7		-	-	-	2	2	2	2	2
PHASE 8		-	1	1	1	-	-	-	-
TOTALS		-	2	2	11	6	6	3	3
EVPE CABLE #20/4		1	1	2	4	2	1	1	-
IISNS #12		2	2	2	-	2	2	2	-
LUMINAIRES #8		2	2	2	-	2	2	2	-
SIGNAL SERVICE #6		-	-	-	2	-	-	-	-
CONDUIT SIZE		1.5"	2"	2.5"	2-3.5" (N)	3"	3"	3"	2.5"

ALL CONDUIT IS EXISTING UNLESS OTHERWISE INDICATED AS (N) NEW. ALL CONDUCTORS ARE NEW. EXISTING CONDUCTORS SHALL BE REMOVED AND NOT REUSED UNLESS OTHERWISE NOTED.



No.	TYPE	HGT.	SIG. M.A.	LUM. M.A.	LUMINAIRE HPS	IISNS LEGEND	SIGNAL MOUNTING				PPB PHASE	REMARKS	
							VEHICLE		PED				
							VEHICLE	PED	VEHICLE	PED			
1	26-4-129(N)	30'	40'(N)	12'(N)	250W(N)	Columbia Ave 3800 (R)	MAS(N)	MAS(N)	SV-1-T(N)	SP-1-T(N)	((C))(N)	#8(N)	
2	1-A	10'	-	-	-	-	-	-	TV-2-T(N)	SP-1-T	((P))(N)	#2(N)	
3	26-4-129(N)	30'	45'(N)	12'(N)	250W(N)	Main ST 1100 (N)	MAS(N)	MAS(N)	SV-1-T(N)	SP-1-T(N)	((P))(N)	-	
4	PPB POST	40"	-	-	-	-	-	-	-	-	-	#2(N)	
5	1-A	10'	-	-	-	-	-	-	TV-2-T	SP-1-T	((C))(N)	#4(N)	
6	26-4-129(N)	30'	40'(N)	12'(N)	250W(N)	Columbia Ave 3700 (R)	MAS(N)	MAS(N)	SV-1-T(N)	SP-1-T(N)	((C))(N)	#4(N)	
7	1-A	10'	-	-	-	-	-	-	TV-2-T(N)	SP-1-T	((P))(N)	#6(N)	
8	26-4-129(N)	30'	45'(N)	12'(N)	250W(N)	Main ST 1200 (N)	MAS(N)	MAS(N)	SV-1-T(N)	SP-1-T(N)	((P))(N)	#6(N)	
9	1-A	10'	-	-	-	-	-	-	TV-2-T	SP-1-T	((C))(N)	#8(N)	

ALL EQUIPMENT IS EXISTING UNLESS OTHERWISE NOTED AS (N) NEW. ((C)) OR ((P)) - INDICATES AUDITORY PEDESTRIAN SIGNAL TO BE INSTALLED; ((C)) INDICATES CUCKOO SOUND; ((P)) INDICATES PEEP-PEEP SOUND. (R) = RELOCATE



**CONSTRUCTION NOTES (THIS SHEET):**

- INSTALL MODEL 170 CONTROLLER ASSEMBLY WITH MODEL 332 CABINET. INSTALL 3M OPTICOM PHASE SELECTOR MODULE.
- REMOVE AND SALVAGE EXISTING TYPE 90 CONTROLLER ASSEMBLY AND TYPE P CABINET. REMOVE FOUNDATION.
- INSTALL 3M OPTICOM DETECTOR MODEL 711 ON MAST ARM BY CLAMPING METHOD. EXACT LOCATION OF DETECTOR SHALL BE DETERMINED BY THE MANUFACTURER'S REPRESENTATIVE IN THE FIELD.
- REMOVE AND SALVAGE EXISTING SIGNAL STANDARD AS NOTED. REMOVE FOUNDATION.
- REMOVE EXISTING PULL BOX AND REPLACE WITH NEW PULL BOX.
- CONSTRUCT P.C.C. CURB RAMP PER CITY STANDARD DRAWING NO. 304.

**GENERAL NOTES:**

- ALL NEW VEHICLE HEADS SHALL HAVE 12" LENSES WITH RED, YELLOW, AND GREEN 'LED' TYPE INDICATIONS.
- NEW PEDESTRIAN SIGNAL HEADS SHALL HAVE 'LED' TYPE INDICATIONS.
- PEDESTRIAN PUSH BUTTONS SHALL BE ADA APPROVED TYPE. EXISTING PUSH BUTTONS SHALL BE REMOVED AND BECOME THE PROPERTY OF THE CONTRACTOR.
- OPTICOM PHASE SELECTORS SHALL BE 2 CHANNEL UNITS ONLY.
- AUDIBLE PEDESTRIAN SIGNAL SHALL BE INTERNAL MOUNT ONLY.



CITY OF RIVERSIDE, CALIFORNIA DEPARTMENT OF PUBLIC WORKS			
APPROVED BY	DATE	BY	APPROVED BY
PRINCIPAL ENGINEER	4/1/06	PH	PH
TRAFFIC DIVISION	3/24/06	SC	SC
MARK	REVISIONS	APPR.	DATE
DESIGNED BY	RP	DRAWN BY	IS/RP
CHECKED BY	JAT		

TRAFFIC SIGNAL PLAN		ACCOUNT NO.
COLUMBIA AVENUE AND MAIN STREET		X-407A
SHEET 1 OF 1		
HORIZ. SCALE: 1" = 20'		VERT. SCALE: N/A



TRAFFIC No. 1575  
DATE: 3-22-06  
AGA Job No.: 134-013  
AGA File Name: COLMAMMD  
Print Date: 3/22/06  
Last Revision: 3/22/06

ALBERT GROVER & ASSOCIATES  
TRANSPORTATION CONSULTING ENGINEERS  
211 E. Imperial Hwy., Suite 208 Fullerton, CA 92835  
(714) 992-2990  
FAX 992-2883

CONTRACT TE-05-03

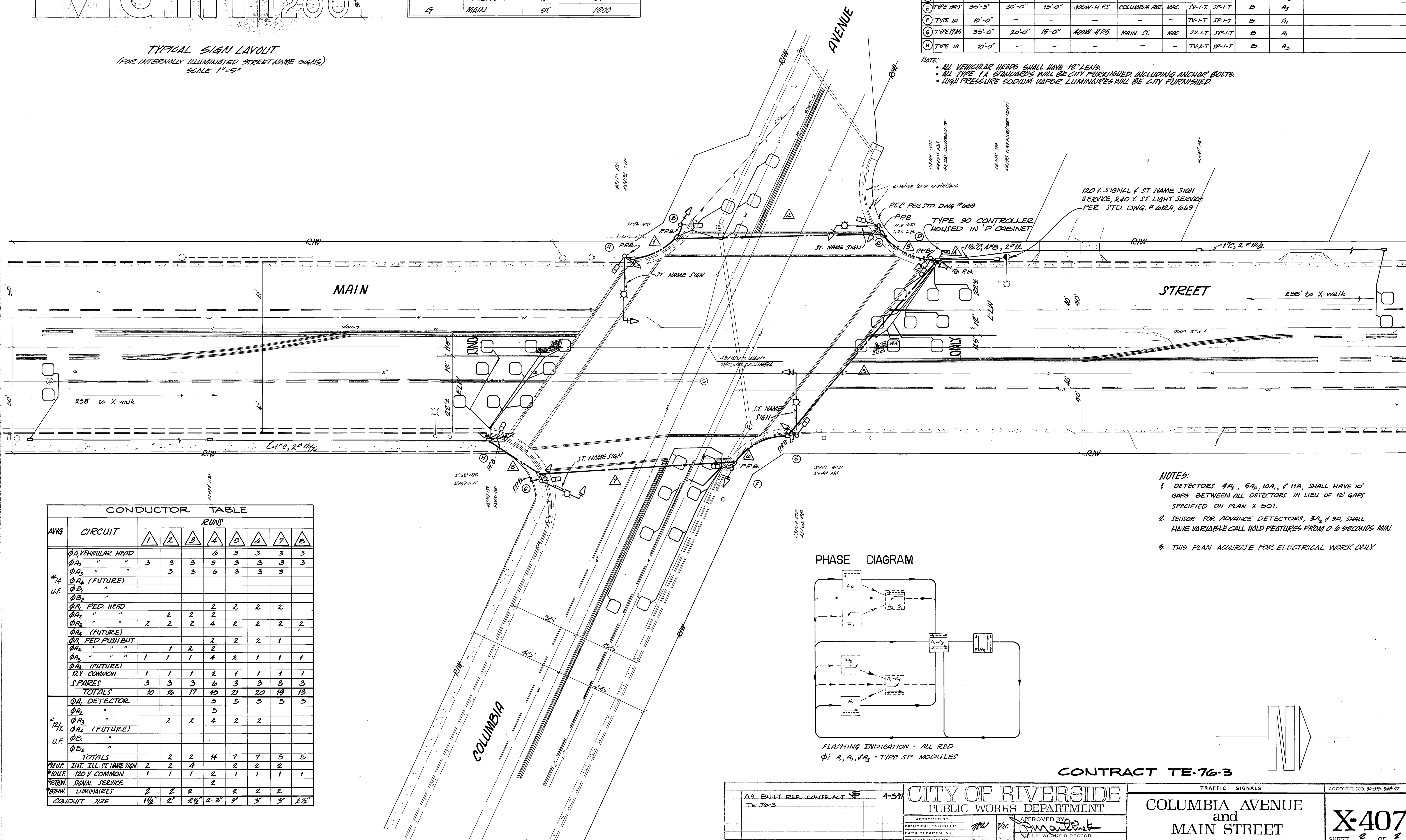
# Main St. 1200

TYPICAL SIGN LAYOUT  
(FOR INTERMEDIATELY ILLUMINATED STREET NAME SIGNS)  
SCALE 1"=5'

STREET NAME SIGN LEGEND			
LOCATION	STREET NAME	DESIGNATOR	BLOCK NO.
A	COLUMBIA AVE	AVE	3800
C	MAIN ST.	ST.	1100
E	COLUMBIA AVE	AVE	3700
G	MAIN ST.	ST.	1200

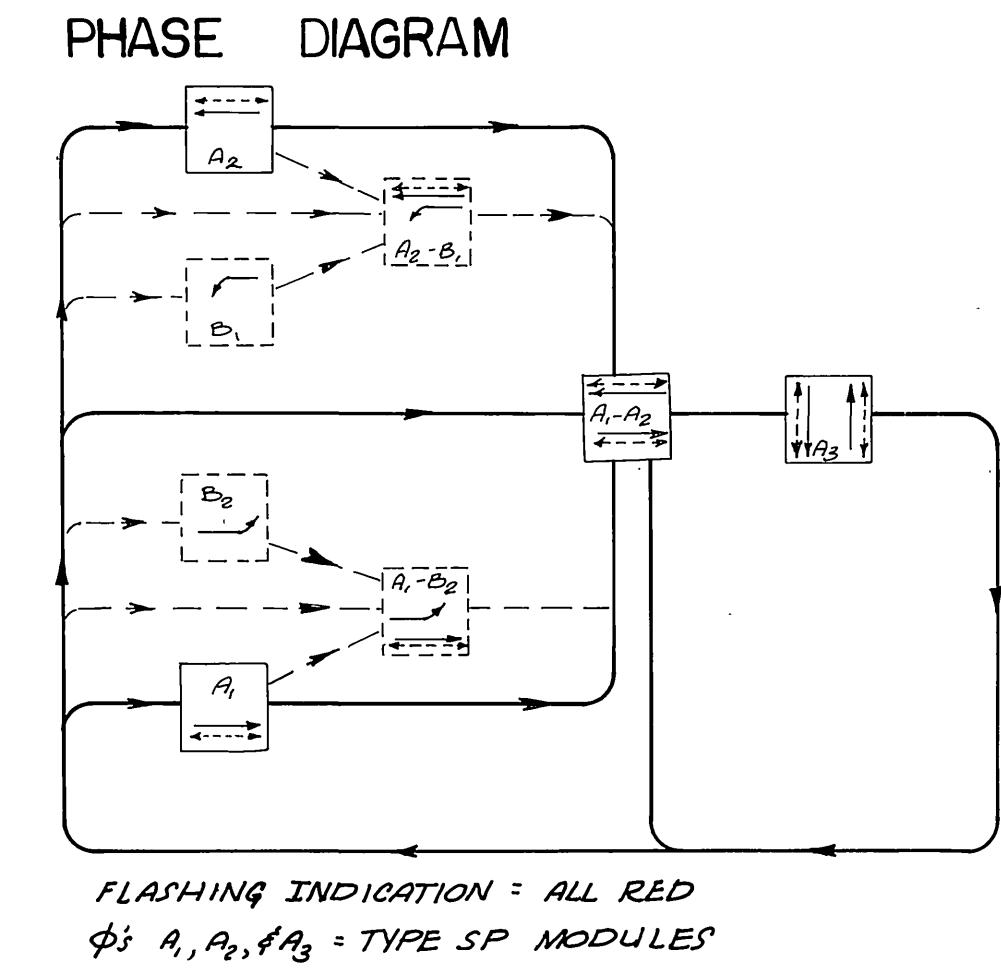
No.	TYPE	STANDARD			LUMINAIRE	I.S.N.S. LEGEND	SCHEDULE		REMARKS
		HEIGHT	SIG. MA.	LUM. MA.			SIGNAL MTG.	PED. PUSH BTN.	
A	TYPE 17AS	35'-9"	30'-0"	15'-0"	400W H.P.S.	COLUMBIA AVE. MAS.	SV-1-T	SP-1-T	B A <sub>3</sub>
B	TYPE 1A	10'-0"	-	-	-	-	TV-1-T	SP-1-T	B A <sub>2</sub>
C	TYPE 17AS	35'-9"	20'-0"	8'-0"	400W H.P.S.	MAIN ST. MAS.	SV-1-T	SP-1-T	B A <sub>2</sub>
D	TYPE 1A	10'-0"	-	-	-	-	TV-2-T	SP-1-T	B A <sub>3</sub>
E	TYPE 17AS	35'-9"	30'-0"	15'-0"	400W H.P.S.	COLUMBIA AVE. MAS.	SV-1-T	SP-1-T	B A <sub>3</sub>
F	TYPE 1A	10'-0"	-	-	-	-	TV-1-T	SP-1-T	B A <sub>1</sub>
G	TYPE 17AS	35'-0"	20'-0"	15'-0"	400W H.P.S.	MAIN ST. MAS.	SV-1-T	SP-1-T	B A <sub>1</sub>
H	TYPE 1A	10'-0"	-	-	-	-	TV-2-T	SP-1-T	B A <sub>3</sub>

NOTE:  
 • ALL VEHICULAR HEADS SHALL HAVE 12" LENS  
 • ALL TYPE 1A STANDARDS SHALL BE CITY FURNISHED, INCLUDING ANCHOR BOLTS  
 • HIGH PRESSURE SODIUM VAPOR LUMINAIRES WILL BE CITY FURNISHED



NOTES:  
 1. DETECTORS 4A<sub>2</sub>, 5A<sub>2</sub>, 10A<sub>1</sub>, & 11A, SHALL HAVE 10' GAPS BETWEEN ALL DETECTORS IN LIEU OF 15' GAPS SPECIFIED ON PLAN X-501.  
 2. SENSOR FOR ADVANCE DETECTORS, 3A<sub>2</sub> & 3A, SHALL HAVE VARIABLE CALL HOLD FEATURES FROM 0-6 SECONDS MAX.  
 3. THIS PLAN ACCURATE FOR ELECTRICAL WORK ONLY

AWG	CIRCUIT	CONDUCTOR TABLE							
		1	2	3	4	5	6	7	8
#14 U.F.	ΦA VEHICULAR HEAD				6	3	3	3	3
	ΦA <sub>2</sub> " "	3	3	3	9	3	3	3	3
	ΦA <sub>3</sub> " "		3	3	6	3	3	3	
	ΦA <sub>4</sub> (FUTURE)								
	ΦB <sub>1</sub> " "								
	ΦB <sub>2</sub> " "								
	ΦA <sub>1</sub> PED. HEAD				2	2	2	2	
	ΦA <sub>2</sub> " "		2	2	2	2	2	2	
	ΦA <sub>3</sub> " "	2	2	2	4	2	2	2	2
	ΦA <sub>4</sub> (FUTURE)								
	ΦA <sub>1</sub> PED. PUSH BUT.			1	2	2	2	1	
	ΦA <sub>2</sub> " "		1	1	2	2	2	1	
ΦA <sub>3</sub> " "	1	1	1	4	2	1	1	1	
ΦA <sub>4</sub> (FUTURE)									
RY COMMON	1	1	1	2	1	1	1	1	
SPARES	3	3	3	6	3	3	3	3	
TOTALS	10	16	17	45	21	20	19	13	
#12 U.F.	ΦA <sub>1</sub> DETECTOR				5	5	5	5	
	ΦA <sub>2</sub> " "				5				
	ΦA <sub>3</sub> " "	2	2	4	2	2			
	ΦA <sub>4</sub> (FUTURE)								
ΦB <sub>1</sub> " "									
ΦB <sub>2</sub> " "									
TOTALS		2	2	14	7	7	5	5	
#12 U.F.	INT. ILL. ST. NAME SIGN	2	2	4		2	2	2	
#10 U.F.	120 V. COMMON	1	1	1	2	1	1	1	
#8 U.F.	SIGNAL SERVICE			2					
#8 U.F.	LUMINAIRES	2	2	2	2	2	2	2	
CONDUIT SIZE		1 1/2"	2"	2 1/2"	2-3"	3"	3"	2 1/2"	



CONTRACT TE-76-3

A <sub>2</sub> BUILT PER CONTRACT # 4-577		CITY OF RIVERSIDE PUBLIC WORKS DEPARTMENT		TRAFFIC SIGNALS		ACCOUNT NO. 30-978-388-07
TE 76-3		APPROVED BY: [Signature]		APPROVED BY: [Signature]		COLUMBIA AVENUE and MAIN STREET
DESIGNED BY: JMW		PRINCIPAL ENGINEER: [Signature]		PUBLIC WORKS DIRECTOR: [Signature]		X-407
DRAWN BY: [Signature]		TRAFFIC DIVISION: [Signature]		DATE: 7-28-76		SHEET 2 OF 2
CHECKED BY: [Signature]		CHIEF P.W. ENGINEER: [Signature]		DATE: 7-28-76		FILE NO.
PUBLIC UTILITIES		DATE: 7-28-76		HORIZ. SCALE: 1" = 20'		VERT. SCALE: 1" = N/A