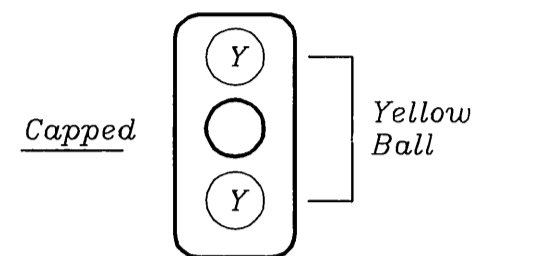
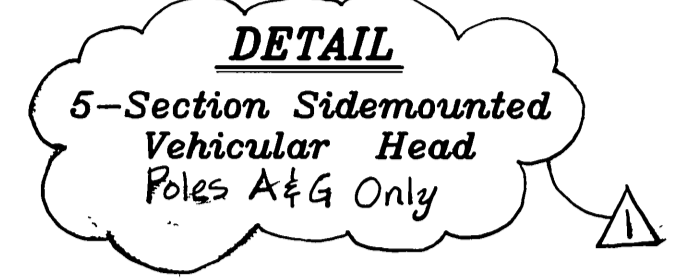
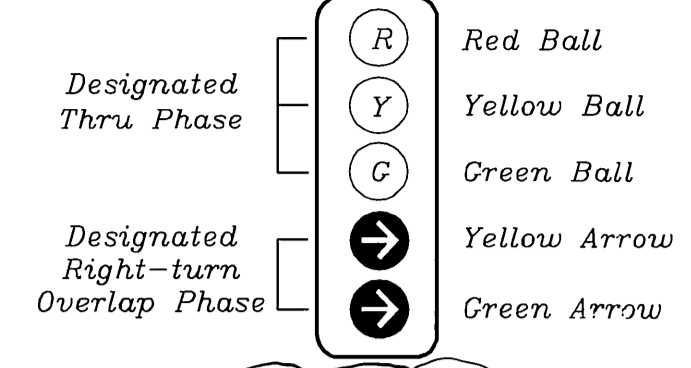


EQUIPMENT SCHEDULE

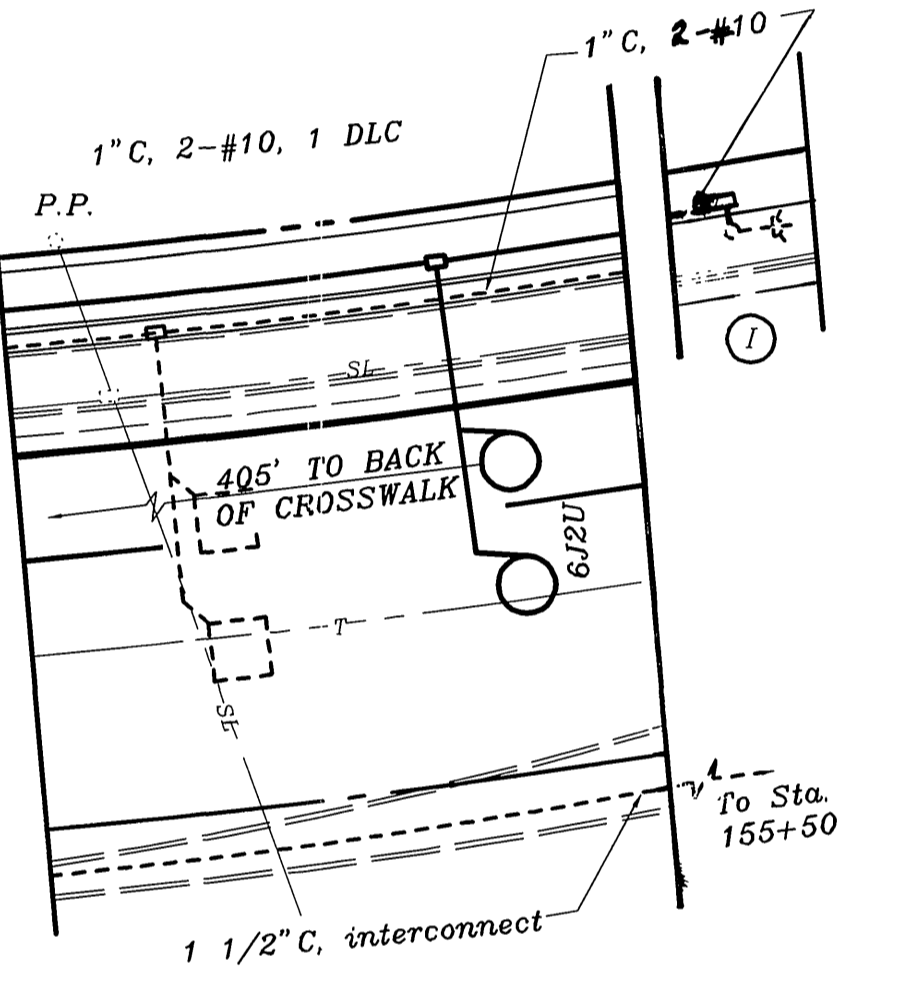
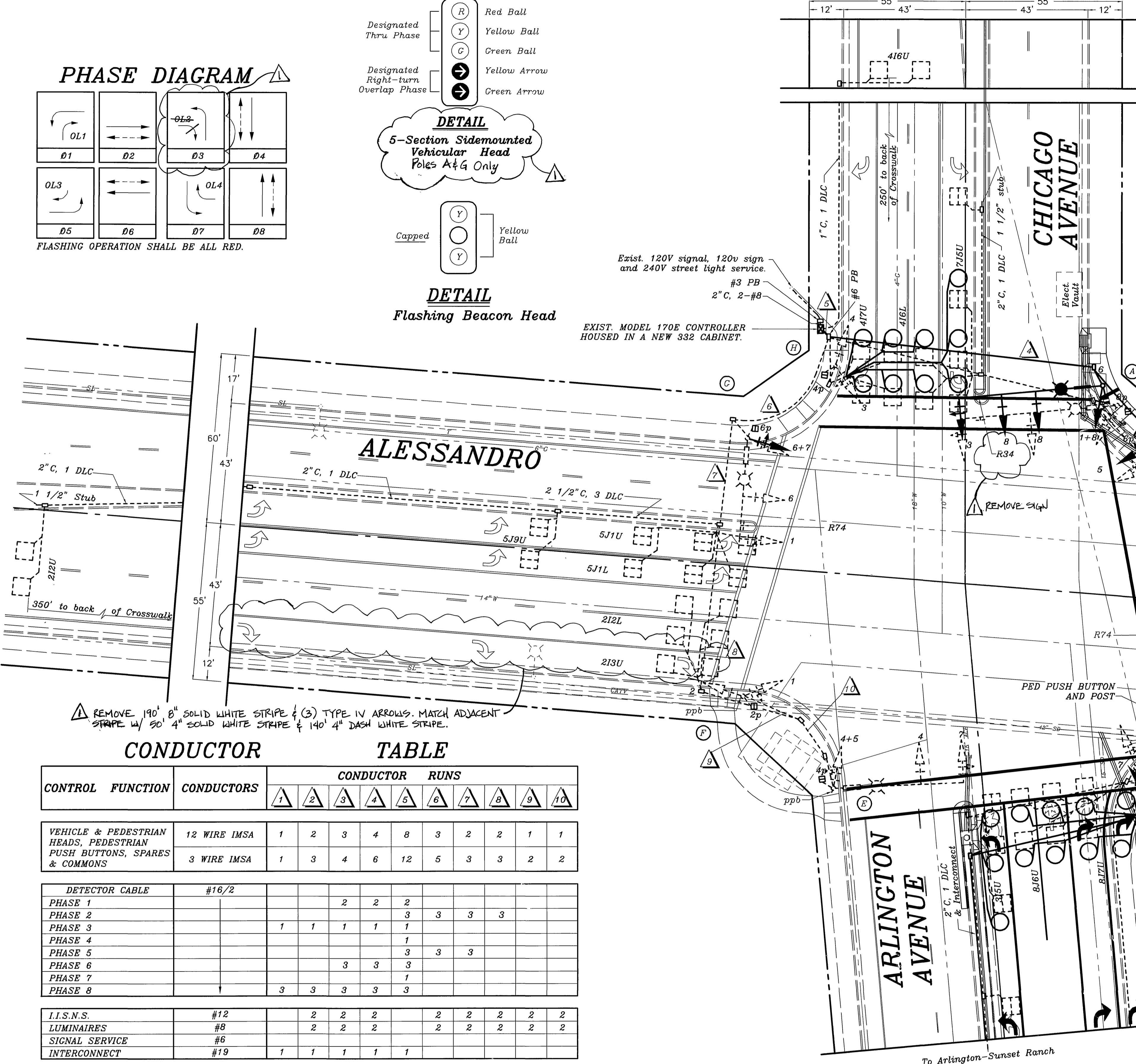
NO.	SIGNAL STANDARD			LUMINAIRE		I.I.S.N.S. LEGEND	SIGNAL MOUNTINGS		PPB PHASE	REMARKS	
	TYPE	H' CHT	M.A.	L.A.	H.P.S.V.		VEHICLE	PEDESTRIAN			
(A)	29-5-129(N)	30'(N)	55'(N)	15'(N)	400W(N)	ALESSANDRO(N)	BLVD 5900	3-MAS(N) SV-1-T(N)	SP-1-T(N)	6,8(N)	REMOVE AND SALVAGE EXIST. POLE AND EQUIP., NEW SV-1-T IS 5 SECTION
(B)	1A(N)	10'(N)						TV-2-T(N)	SP-1-T(N)	8,6(N)	R. S. EXIST. POLE AND EQUIP.
(C)	29-5-129(N)	30'(N)	55'(N)	15'(N)	400W(N)	ARLINGTON(N)	AV 2100	3-MAS(N) SV-1-T(N)	SP-1-T(N)	8,2(N)	REMOVE AND SALVAGE EXIST. POLE AND EQUIP., NEW SV-1-T IS 5 SECTION
(D)	1A(N)	10'(N)						TV-2-T(N)	SP-1-T(N)	2,8(N)	R. S. EXIST. POLE AND EQUIP.
(E)	26-4-70	30'	45'	15'	400W	ALESSANDRO	BLVD 5900	2-MAS SV-1-T	SP-1-T	2	
(F)	1A	10'						TV-2-T	SP-1-T	4	
(G)	24-4-80	30'	35'	15'	400W	CHICAGO	AV 2000	MAS SV-1-T(N)	SP-1-T	4	NEW SV-1-T IS 5 SECTION
(H)	1A	10'						TV-2-T	SP-1-T	6	
(I)	1A	10'						TV-1			

NOTES:
 1. ALL VEHICULAR HEADS SHALL HAVE 12" LENSES.
 2. ALL LEFT TURN HEADS SHALL HAVE ALL ARROWS.
 3. PEDESTRIAN PUSH BUTTONS SHALL BE INSTALLED ON THE POLE IN THE QUADRANT NEAREST THE CROSSWALK SERVING THE PHASE.

(A) LOCATE CENTER OF POLE 2'-6" BEHIND CURB FACE



Exist. 120V signal, 120v sign and 240V street light service.
 #3 PB
 2" C, 2-#8
 Exist. Model 170E CONTROLLER HOUSED IN A NEW 332 CABINET.



CONDUCTOR TABLE

CONTROL FUNCTION	CONDUCTORS	CONDUCTOR RUNS																			
		1	2	3	4	5	6	7	8	9	10										
VEHICLE & PEDESTRIAN HEADS, PEDESTRIAN PUSH BUTTONS, SPARES & COMMONS	12 WIRE IMSA 3 WIRE IMSA	1	2	3	4	8	3	2	2	1	1	1	3	4	6	12	5	3	3	2	2
DETECTOR CABLE	#16/2				2	2	2														
PHASE 1																					
PHASE 2																					
PHASE 3		1	1	1	1	1	1														
PHASE 4																					
PHASE 5																					
PHASE 6																					
PHASE 7																					
PHASE 8		3	3	3	3	3	3														
I.I.S.N.S.	#12		2	2	2					2	2	2	2	2	2	2	2	2	2	2	2
LUMINAIRES	#8		2	2	2					2	2	2	2	2	2	2	2	2	2	2	2
SIGNAL SERVICE	#6																				
INTERCONNECT	#19	1	1	1	1	1	1														
CONDUIT SIZE		3"	3.5"	3.5"	3.5"	2-3"	3"	3"	3"	2.5"	2.5"	2"									
		(N)	(N)	(N)	(N)	(E)	(E)	(E)	(E)	(E)	(E)	(E)									

NOTE:
 1. SEE SPECIAL PROVISIONS FOR ADDITIONAL INFORMATION ON I.M.S.A. CABLE.
 2. INTERCONNECT CABLE SHALL BE 6 PAIR #19 GAUGE (SEE SPECIAL PROVISIONS).

GENERAL NOTES

- 1 - Detector loops shall be installed in the presence of the Traffic Engineer or his representative.
- 2 - All signing, striping, and pavement marking requirements shall be completed at least one day prior to turn-on.
- 3 - Typical detector loop spacing: 10', 15', and 30' (where applicable).
- 4 - Pavement Delineation shown hereon is for reference only. See plan XL-496 for proposed striping.
- 4 - See also Plan R-3793 for other improvements.

IMPORTANT NOTICE
 Section 4216.4217 of the Government Code requires a Dig Alert identification number to be issued before a "Permit to Excavate" will be valid. For your Dig Alert, Number call **CALL TOLL FREE 1-800-227-2600**
 TWO WORKING DAYS BEFORE YOU DIG UNDERGROUND SERVICE ALERT

ENGINEER IN RESPONSIBLE CHARGE
 THOMAS JOHN BOYD
 R.C.E. No. C 36170 expires 6/30/2006
 DATE 4/16/06

CITY OF RIVERSIDE, CALIFORNIA DEPARTMENT OF PUBLIC WORKS
 APPROVED BY: [Signature]
 PRINCIPAL ENGINEER: DJE
 TRAFFIC DIVISION: [Signature]
 DATE: 4/16/06

TRAFFIC SIGNAL MODIFICATION
ALESSANDRO BLVD., ARLINGTON AVE. AND CHICAGO AVE.

ACCT. NO. 8578930214-44030200
X-412A
 SHEET 1 OF 1
 FILE NAME: X412A.DWG
 SCALE: 1" = 20'

