

**EQUIPMENT**

**SCHEDULE**

NO.	SIGNAL STANDARD		LUMINAIRE		I.I.S.N.S.		SIGNAL MOUNTINGS		PPB	REMARKS
	TYPE	H'GHT	M.A.	L.A.	H.P.S.V.	LEGEND	VEHICLE	PEDESTRIAN		
(A)	17-2-80(N)	30'	20'(N)	12'(N)	250W(N)		MAS(N)		4(N)	Remove and salvage exist. pole and equip. except S.N.S., relocate S.N.S. to new pole
							SV-1-T(N)	SP-1-T(N)		
(B)	1A(N)	10'					TV-1-T(N)	SP-1-T(N)	6(N)	Remove and salvage exist. pole and equip. Reuse exist. foundation.
(C)	19-3-70(N)	30'	25'(N)	12'(N)	250W(N)		MAS(N)			
							MAS(N)			
							SV-1-T(N)	SP-1-T(N)	6(N)	Remove and salvage exist. pole and equip.
(D)	1A(R)	7'						TP-1-T(N)	8(R)	Remove and salvage exist. equip.
(E)	19-2-70(E)	30'	25'(E)	12'(N)	250W(N)		MAS(E)			ROTATE SP-1-T AS SHOWN. INSTALL STRAIGHT SHAFT LUMINAIRE ARM. PROVIDE NEW PED. FRAMEWORK
							SV-1-T(E)	SP-1-T(N)	8(E)	
(F)	1A(N)	10'					TV-1-T(N)	SP-1-T(N)	2(N)	Remove and salvage exist. pole and equip.
(G)	19-3-70(N)	30'	25'(N)	12'(N)	250W(N)		MAS(N)			
							MAS(N)			
							SV-1-T(N)	SP-1-T(N)	2(N)	Remove and salvage exist. pole and equip.
(H)	1A(E)	7'						TP-1-T(E)	4(E)	ROTATE TP-1-T AS SHOWN.

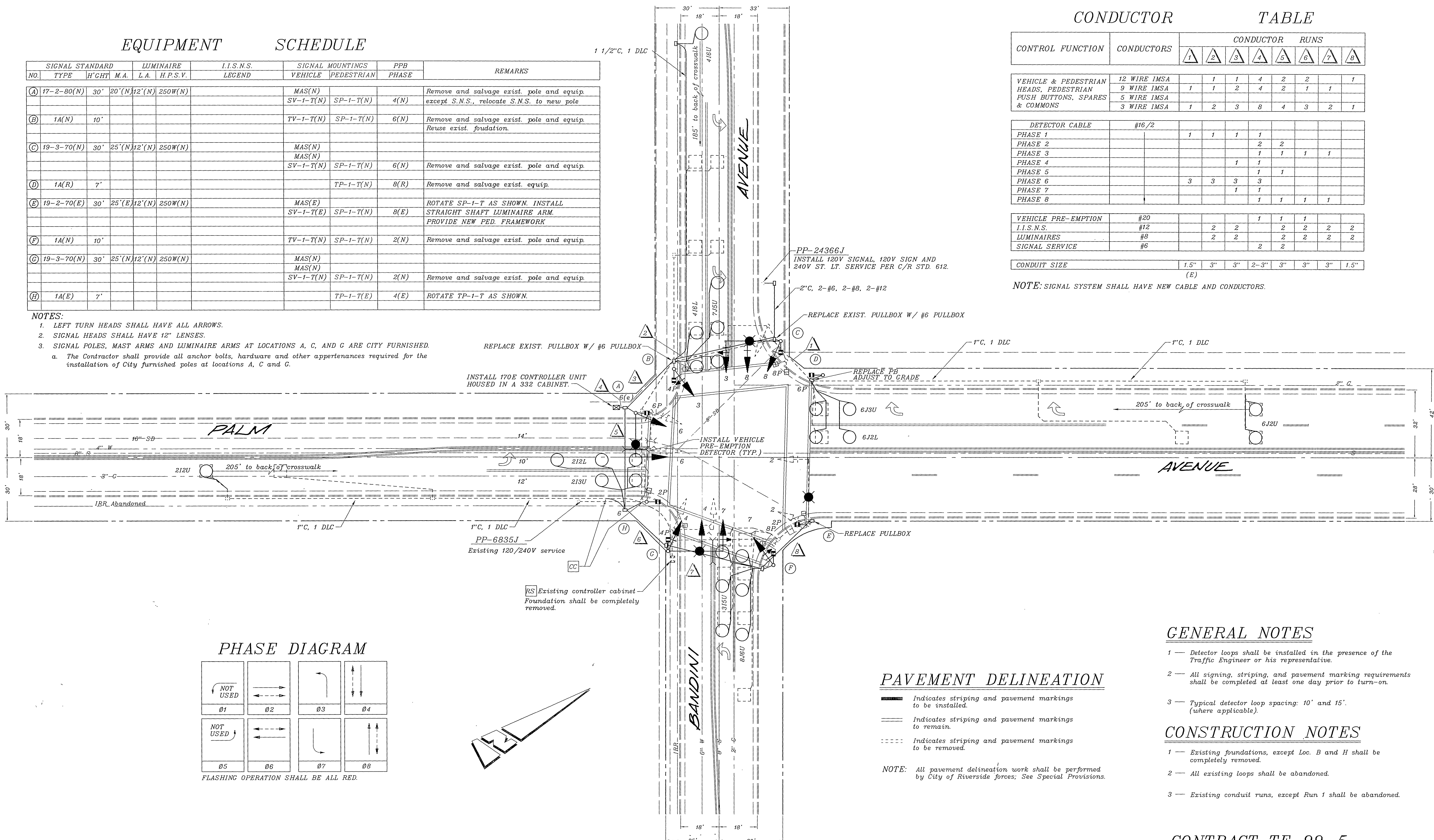
**NOTES:**

- LEFT TURN HEADS SHALL HAVE ALL ARROWS.
- SIGNAL HEADS SHALL HAVE 12" LENSES.
- SIGNAL POLES, MAST ARMS AND LUMINAIRE ARMS AT LOCATIONS A, C, AND G ARE CITY FURNISHED.
  - The Contractor shall provide all anchor bolts, hardware and other appertenances required for the installation of City furnished poles at locations A, C and G.

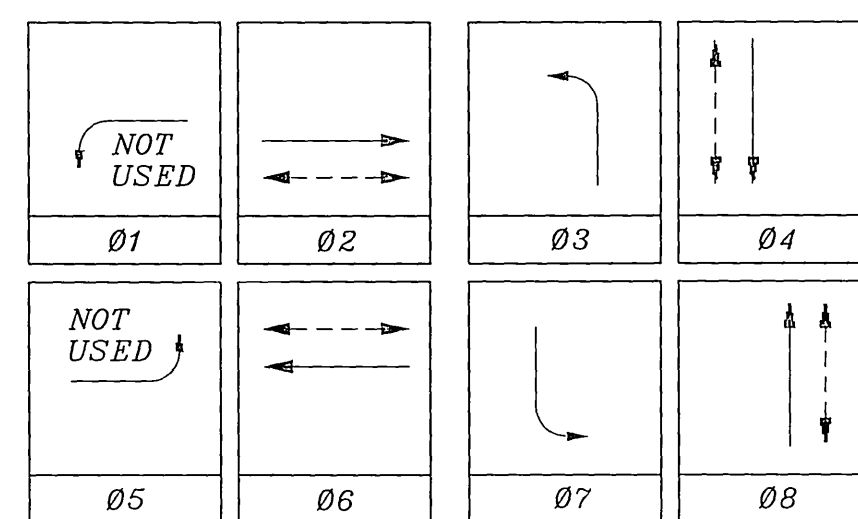
**CONDUCTOR TABLE**

CONTROL FUNCTION	CONDUCTORS	CONDUCTOR RUNS							
		1	2	3	4	5	6	7	8
VEHICLE & PEDESTRIAN HEADS, PEDESTRIAN PUSH BUTTONS, SPARES & COMMONS	12 WIRE IMSA		1	1	4	2	2		1
	9 WIRE IMSA	1	1	2	4	2	1	1	
	5 WIRE IMSA								
	3 WIRE IMSA	1	2	3	8	4	3	2	1
DETECTOR CABLE #16/2									
PHASE 1		1	1	1	1				
PHASE 2					2	2			
PHASE 3					1	1	1	1	
PHASE 4					1	1			
PHASE 5					1	1			
PHASE 6		3	3	3	3				
PHASE 7					1	1			
PHASE 8					1	1	1	1	1
VEHICLE PRE-EMPTION	#20				1	1	1		
I.I.S.N.S.	#12		2	2	2	2	2	2	2
LUMINAIRES	#8		2	2	2	2	2	2	2
SIGNAL SERVICE	#6				2	2			
CONDUIT SIZE		1.5"	3"	3"	2-3"	3"	3"	3"	1.5"

NOTE: SIGNAL SYSTEM SHALL HAVE NEW CABLE AND CONDUCTORS.



**PHASE DIAGRAM**



FLASHING OPERATION SHALL BE ALL RED.

**PAVEMENT DELINEATION**

- Indicates striping and pavement markings to be installed.
- Indicates striping and pavement markings to remain.
- Indicates striping and pavement markings to be removed.

NOTE: All pavement delineation work shall be performed by City of Riverside forces; See Special Provisions.

**GENERAL NOTES**

- Detector loops shall be installed in the presence of the Traffic Engineer or his representative.
- All signing, striping, and pavement marking requirements shall be completed at least one day prior to turn-on.
- Typical detector loop spacing: 10' and 15' (where applicable).

**CONSTRUCTION NOTES**

- Existing foundations, except Loc. B and H shall be completely removed.
- All existing loops shall be abandoned.
- Existing conduit runs, except Run 1 shall be abandoned.

**CONTRACT TE-99-5**

**IMPORTANT NOTICE**  
 Section 4216/4217 of the Government Code requires a Dig Alert Identification Number to be issued before a "Trench to Excavate" will be valid. For your Dig Alert ID, Number call  
**CALL TOLL FREE**  
 TWO WORKING DAYS BEFORE YOU DIG  
**UNDERGROUND SERVICE ALERT**  
 1-800-227-2600

**ENGINEER IN RESPONSIBLE CHARGE**  
  
 THOMAS J. BOYD  
 R.C.E. No. 36179 expires 8/30/00  
 DATE 3/21/00

**REGISTERED PROFESSIONAL ENGINEER**  
 THOMAS JOHN BOYD  
 No. 36170  
 Exp. 06-30-2000  
 CIVIL  
 STATE OF CALIFORNIA

DESIGNED BY: MAC DRAWN BY: MAC CHECKED BY: \_\_\_\_\_

CITY OF RIVERSIDE, CALIFORNIA  
 DEPARTMENT OF PUBLIC WORKS

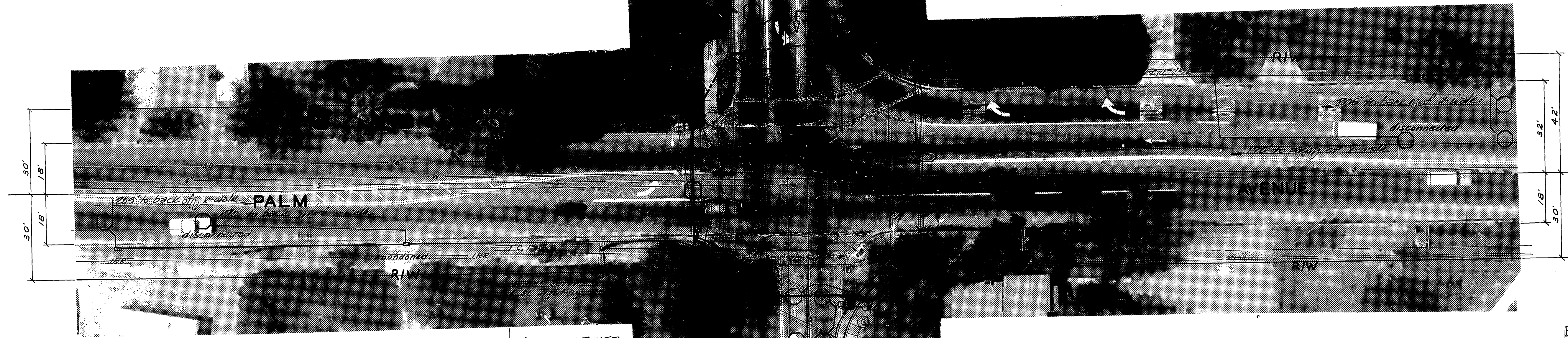
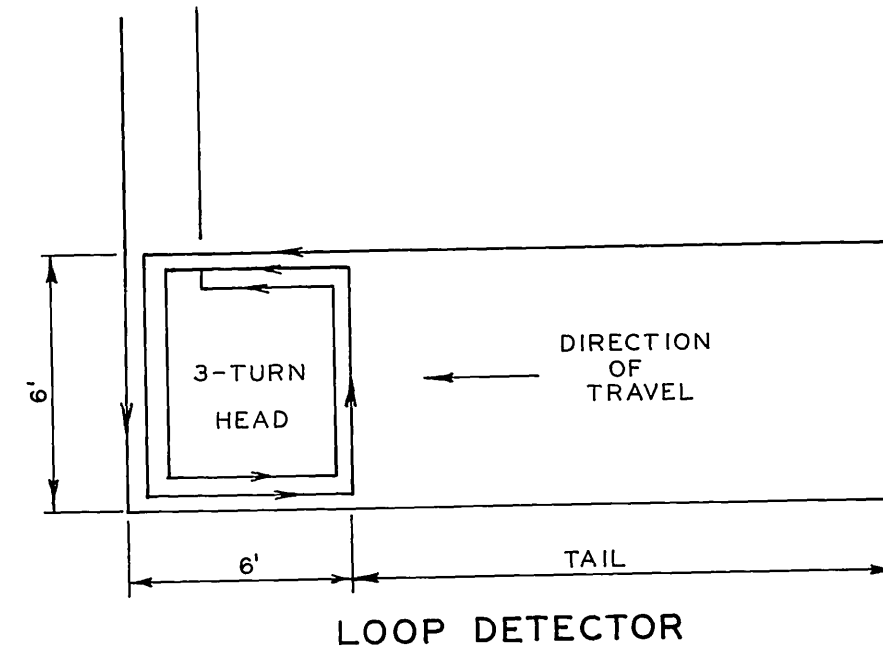
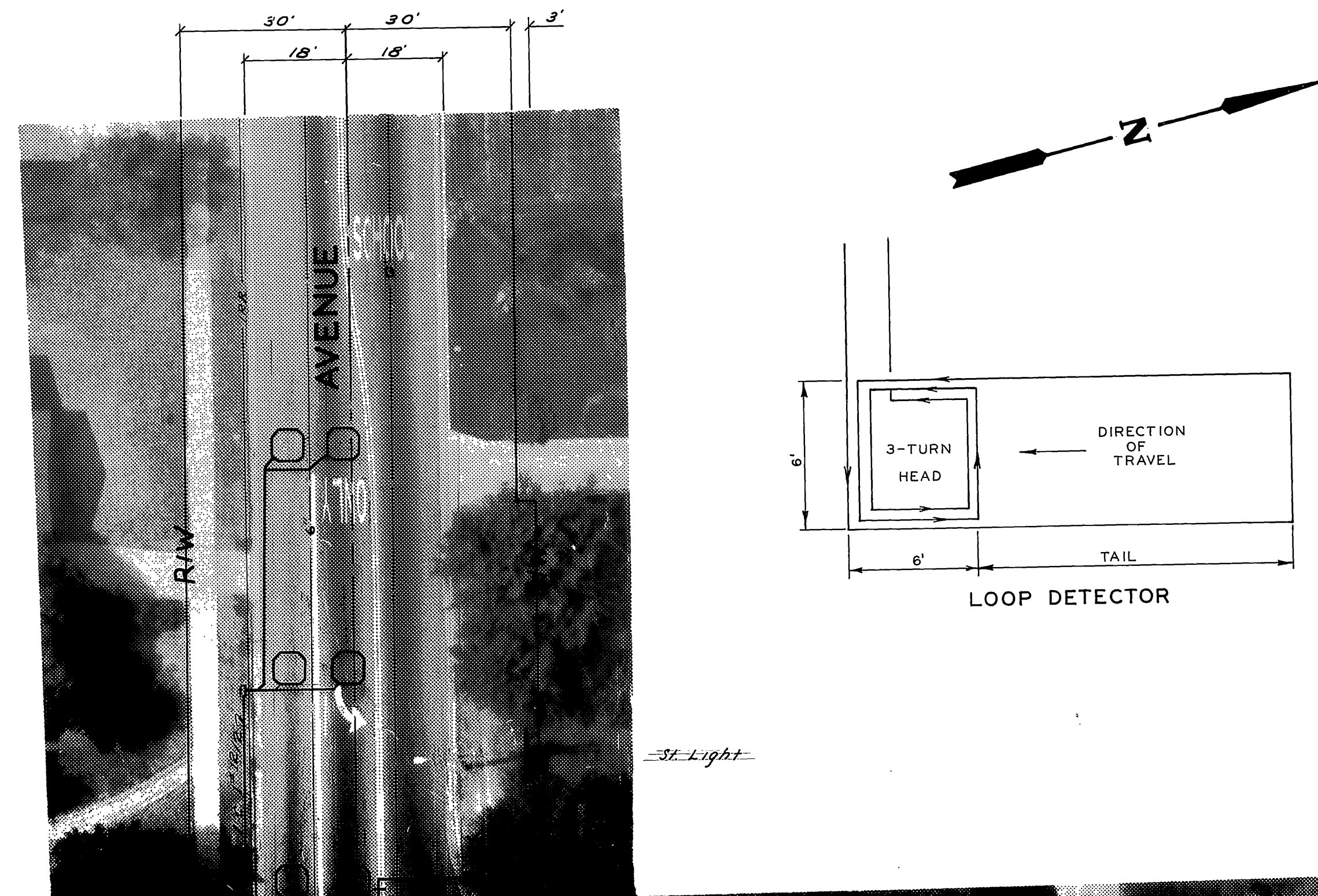
APPROVED BY*	BY	DATE
ENGINEERING MANAGER	R. McBrat	4-5-00
PRINCIPAL ENGINEER		
P.W. INSPECTION		
TRAFFIC DIVISION		
PUBLIC UTILITIES		

TRAFFIC SIGNAL MODIFICATION  
**BANDINI AVENUE @ PALM AVENUE**  
 SCALE: 1" = 20'

ACCT. NO. 0432-541600-440302-35085  
**X-423A**  
 SHEET 1 OF 1  
 FILE NAME: X423.DWG

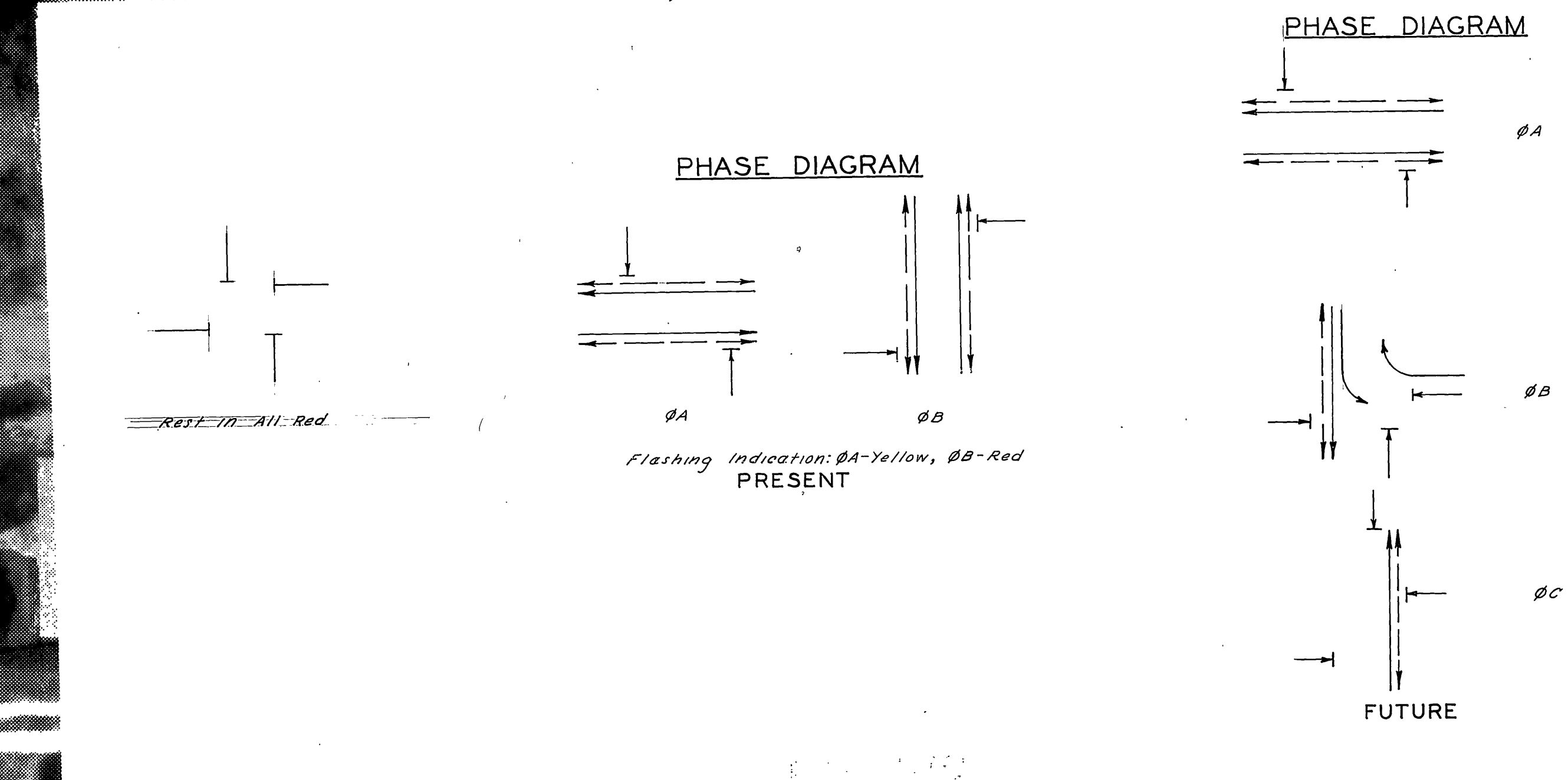


POLE AND SIGNAL SCHEDULE							
LOCATION	STANDARD	LUMINAIRE	SIGNALS			WALK-DON'T WALK	
			TYPE	MTG.	LENS SIZE	TYPE	MTG.
Ⓐ	7-Type 1					2-W2C	W-2"
Ⓑ	Type XII	10,000MV	1-W3C 1-W3C	B-1 M2, MA	3-8" 3-12"		
Ⓒ	7-Type 1					1-W2C	W-1
Ⓓ	68J0G1B	20,000MV	1-W3C 1-W3C	B-1 M2, 18'MA	3-8" 3-12"	1-W2C	W-0
Ⓔ	7-Type 1					1-W2C	W-1
Ⓕ	68J0G1B	10,000MV	1-W3C 1-W3C	B-1 M2, 18'MA	3-8" 3-12"	1-W2C	W-0
Ⓖ	7-Type 1					1-W2C	W-0
Ⓗ	TYPE 19	20,000MV	1-W3C 1-W3C	B-1 M2, 18'MA	3-8" 3-12"	1-W2C	W-0



TYPE 90 CONTROLLER  
IN A TYPE 19 CABINET.

Conductor Run	CONDUCTOR SCHEDULE																											
	1				2				3				4				5				6				7			
	8	10	12	14	8	10	12	14	8	10	12	14	8	10	12	14	8	10	12	14	8	10	12	14	8	10	12	14
Conductors																												
ØA			3					3				6				3												
ØB												3								3								3
ØC (Future)																												
ØA W-DW								2				4				2				2				2				2
ØB W-DW (Future ØC)								2				4				2				2				2				2
ØA PPB								1				4				2				2				2				1
ØB PPB (Future ØC)								1				4				3				2				1				1
ØA Det.												4				2				2				2				2
ØB Det.								1				3				2				2				2				
ØC Det. (Future)																												
Spares			3					3				3				3				3				3				3
120V Neutral		1						1				1				1				1				1				1
12V Neutral		1						1				1				1				1				1				1
Signal Service												2				2				2				2				2
Lighting Service		2						2				2				2				2				2				2
ØA + ØB Yellow												1				1				1				1				1
Total Conductors	2	1	2	8	2	1	3	10	2	1	3	7	2	4	1	6	2	1	5	4	2	1	4	4	2	1	3	2
Conduit Size		1 1/2"						2"				3"				3"				2"				2"				2"



AS BUILT ØA ADV. LOOPS AS BUILT LOOPS PER Ø7 REVISED. AS BUILT LOOPS ØA AS BUILT IN W CORNER PER R-1656 AS BUILT (206' 10" ØB) AS BUILT (200 FT) AS BUILT (Signal Installation)			MAR 5/8/86 MAR 9/7/86 MAR 19/86 MAR 2/5/89 MAR 7/28/89 MAR 7/2/89			<b>CITY OF RIVERSIDE, CALIFORNIA</b> <b>DEPARTMENT OF PUBLIC WORKS</b>			PALM AVENUE & BANDINI AVENUE			ACCOUNT NO. <b>X-423</b>		
DESIGNED BY: _____ DRAWN BY: JMW CHECKED BY: _____			APPROVED BY: _____ SENIOR ENGINEER PARK DEPARTMENT TRAFFIC DIVISION ASSISTANT CITY ENG.			APPROVED BY: _____ DIRECTOR OF PUBLIC WORKS			<b>TRAFFIC SIGNALS</b>			SHEET _____ OF _____		
DATE: _____			DATE: _____			DATE: _____			HORIZ. SCALE: 1" = 20' VERT. SCALE: 1" = _____			S.S. PROJECT NO. _____		