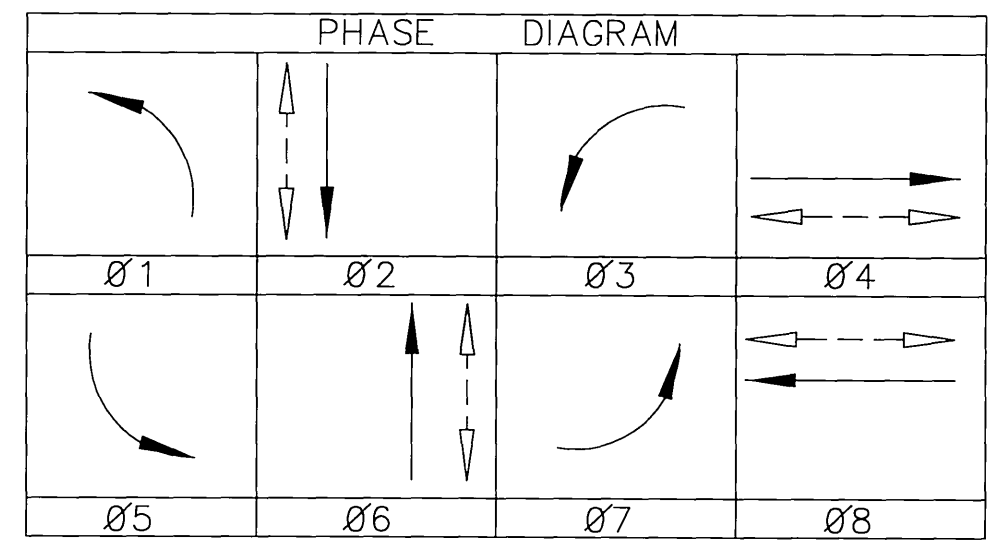


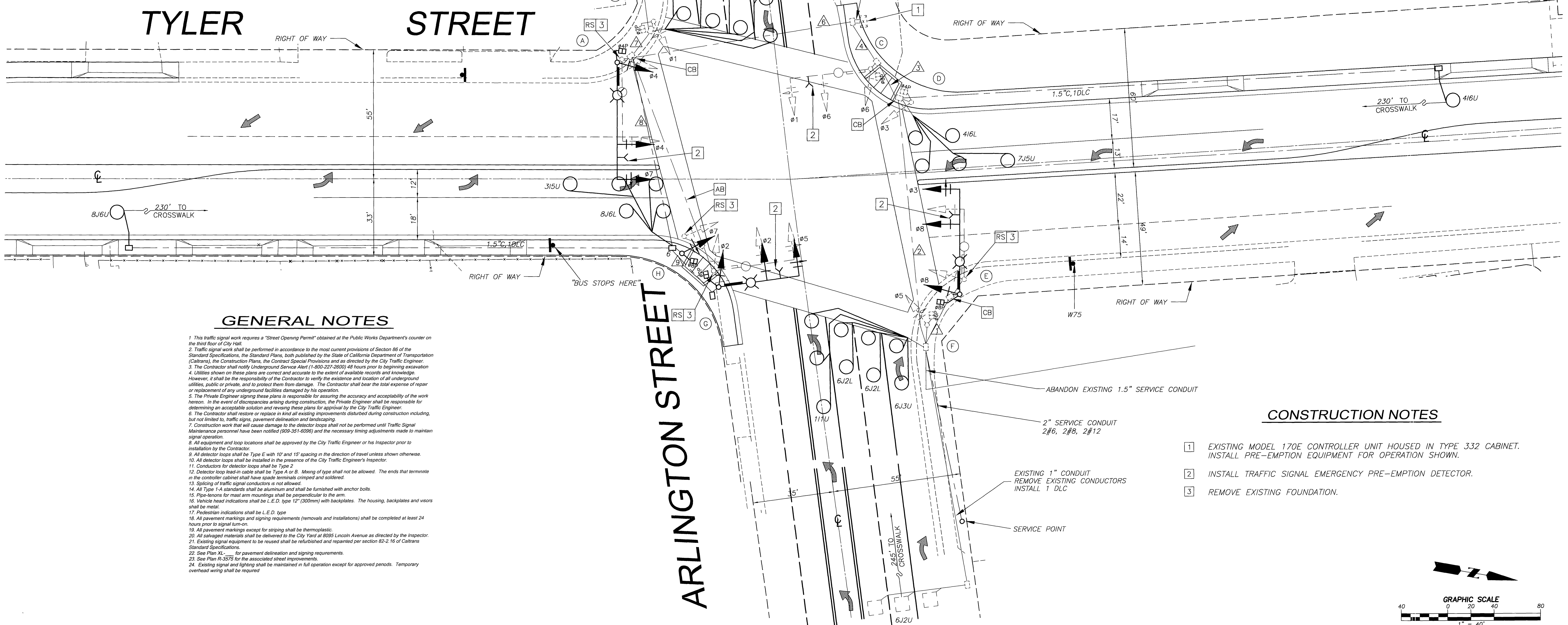
CONDUCTOR TABLE										
CONTROL FUNCTION	CONDUCTORS	CONDUCTOR RUNS								
		1	2	3	4	5	6	7	8	9
VEHICLE & PEDESTRIAN HEADS, PEDESTRIAN PUSH BUTTONS, SPARES AND COMMONS	12 CONDUCTOR CABLE	1	2	3	4	5	6	7	8	9
	3 CONDUCTOR CABLE	1	2	3	4	5	6	7	8	9
DETECTOR CABLE	#16/2									
PHASE 1		1	1	1	1					
PHASE 2						4	4	4		
PHASE 3						1	1	1	1	
PHASE 4				2	2	2				
PHASE 5						1	1	1	1	
PHASE 6			4	4	4	4				
PHASE 7			1	1	1	1				
PHASE 8						2	2	2	2	
TOTAL			5	8	8	16	8	5	3	
PRE-EMPTION CABLE	4#20	1	1	1	2	4	2		1	1
INTERCONNECT CABLE	6-PAIR #19									
I.L.S.N.S.	#12	2	2	2	2	2	2	2	2	2
LUMINAIRES	#8	2	2	2	2	2	2	2	2	2
SIGNAL SERVICE	#6	2	2	2	2	2	2	2	2	2
CONDUIT SIZE		3"	2.5"	3"	2-3"	3"	2.5"	3"	3"	3"
(N) = NEW (E) = EXISTING		E	E	E	E	E	E	N	N	N
PERCENT FILL		10%	36%	32%	40%	37%	38%	17%	21%	10%



EQUIPMENT SCHEDULE														
NO.	SIGNAL STANDARD	TYPE	HEIGHT	M.A.	LUMINAIRE	M.A.	H.P.S.V.	I.L.S.N.S. LEGEND	SIGNAL MOUNTINGS			PPB PHASE	REMARKS	
									VEHICLE	PEDESTRIAN	AUDIBLE			
(A)	29-5-80		30'	50'	12'	250W		ARLINGTON AVE 10300	MAS					
									SV-1-T	SP-1-T	((C))		2	
(B)	1-A (E)		10' (E)						TV-1-T (E)	SP-1-T	((P))		4 (E)	
(C)	24-4-80 (E)		30' (E)	35' (E)	12' (E)	250W (E)		TYLER ST 6400	MAS (E)					
									SV-1-T (E)	SP-1-T	((P))		4	
(D)	1-A (E)		10' (E)						TV-1-T (E)	SP-1-T	((C))		8 (E)	
(E)	26-4-80		30'	45'	12'	250W		ARLINGTON AVE 10200	MAS					
									SV-1-T	SP-1-T	((C))		6	
(F)	1-A (E)		10' (E)						TV-1-T (E)	SP-1-T	((P))		8 (E)	
(G)	24-4-80		30'	35'	12'	250W		TYLER ST 6200	MAS					
									SV-1-T	SP-1-T	((P))		8	
(H)	1-A		10'						TV-1-T	SP-1-T	((C))		2	

NOTE:
1. SEE SPECIAL PROVISIONS FOR ADDITIONAL INFORMATION ON EMERGENCY PRE-EMPTION CABLE

NOTES:
1. REMOVE AND SALVAGE ALL EQUIPMENT NOT TO BE REUSED.
2. ALL VEHICLE HEADS SHALL HAVE 12" LENSES WITH ALL LED INDICATIONS.
3. ALL LEFT TURN HEADS SHALL HAVE ALL ARROW INDICATIONS.
4. PEDESTRIAN PUSH BUTTONS SHALL BE INSTALLED ON THE POLE IN THE QUADRANT NEAREST THE CROSSWALK SERVING THAT PHASE.
5. TYPE 1-A STANDARDS SHALL BE ALUMINUM.
6. LUMINAIRES SHALL BE HIGH PRESSURE SODIUM VAPOR.
7. ((C)) OR ((P)) - INDICATES AUDIBLE PEDESTRIAN SIGNAL TO BE INSTALLED.
8. ((C)) INDICATES CUCKOO SOUND; ((P)) INDICATES PEEP-PEEP SOUND.
9. LOCATION OF EMERGENCY PRE-EMPTION DETECTORS SHALL BE AS DETERMINED IN THE FIELD BY THE MANUFACTURERS REPRESENTATIVE.
10. (E) INDICATES EXISTING EQUIPMENT TO REMAIN.

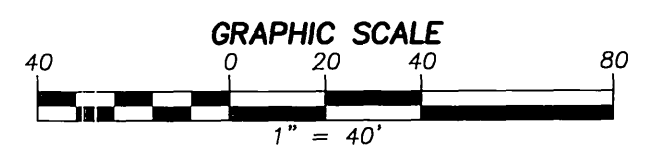


GENERAL NOTES

- This traffic signal work requires a "Street Opening Permit" obtained at the Public Works Department's counter on the third floor of City Hall.
- Traffic signal work shall be performed in accordance to the most current provisions of Section 86 of the Standard Specifications, the Standard Plans, both published by the State of California Department of Transportation (Caltrans), the Construction Plans, the Contract Special Provisions and as directed by the City Traffic Engineer.
- The Contractor shall notify Underground Service Alert (1-800-227-2600) 48 hours prior to beginning excavation.
- Utilities shown on these plans are correct and accurate to the extent of available records and knowledge. However, it shall be the responsibility of the Contractor to verify the existence and location of all underground utilities, public or private, and to protect them from damage. The Contractor shall bear the total expense of repair or replacement of any underground facilities damaged by his operation.
- The Private Engineer signing these plans is responsible for assuring the accuracy and acceptability of the work herein. In the event of discrepancies arising during construction, the Private Engineer shall be responsible for determining an acceptable solution and revising these plans for approval by the City Traffic Engineer.
- The Contractor shall restore or replace in kind all existing improvements disturbed during construction including, but not limited to, traffic signs, pavement delineation and landscaping.
- Construction work that will cause damage to the detector loops shall not be performed until Traffic Signal Maintenance personnel have been notified (909-351-6096) and the necessary timing adjustments made to maintain signal operation.
- All equipment and loop locations shall be approved by the City Traffic Engineer or his Inspector prior to installation by the Contractor.
- All detector loops shall be Type E with 10' and 15' spacing in the direction of travel unless shown otherwise.
- All detector loops shall be installed in the presence of the City Traffic Engineer's Inspector.
- Conductors for detector loops shall be Type 2.
- Detector loop lead-in cable shall be Type A or B. Mating of type shall not be allowed. The ends that terminate in the controller cabinet shall have spade terminals crimped and soldered.
- Splicing of traffic signal conductors is not allowed.
- All Type 1-A standards shall be aluminum and shall be furnished with anchor bolts.
- Pipe-fittings for mast arm mountings shall be perpendicular to the arm.
- Vehicle head indications shall be L.E.D. type 12" (300mm) with backplates. The housing, backplates and visors shall be metal.
- Pedestrian indications shall be L.E.D. type.
- All pavement markings and signing requirements (removals and installations) shall be completed at least 24 hours prior to signal turn-on.
- All pavement markings except for striping shall be thermoplastic.
- All salvaged materials shall be delivered to the City Yard at 8095 Lincoln Avenue as directed by the Inspector.
- Existing signal equipment to be reused shall be refurbished and repainted per section 62-2.16 of Caltrans Standard Specifications.
- See Plan XL for pavement delineation and signing requirements.
- See Plan R-3575 for the associated street improvements.
- Existing signal and lighting shall be maintained in full operation except for approved periods. Temporary overhead wiring shall be required.

CONSTRUCTION NOTES

- EXISTING MODEL 170E CONTROLLER UNIT HOUSED IN TYPE 332 CABINET. INSTALL PRE-EMPTION EQUIPMENT FOR OPERATION SHOW.
- INSTALL TRAFFIC SIGNAL EMERGENCY PRE-EMPTION DETECTOR.
- REMOVE EXISTING FOUNDATION.



FILE WITH R-3575

0:\78603\SIGNAL PLANS_Tyler and Arlington_Signaling 10/14/03_08.31

	DESIGNED BY: MG	DRAWN BY: MG	CHECKED BY: SJH	<p>937 SOUTH VIA LATA SUITE 500 COLTON, CA 92324 PH. (909) 783-0101 FAX (909) 783-0108</p>	<p>Underground Service Alert Call: TOLL FREE 1-800-227-2600 TWO WORKING DAYS BEFORE YOU DIG</p>	<p>CITY OF RIVERSIDE, CALIFORNIA PUBLIC WORKS DEPARTMENT</p> <p>APPROVED BY: [Signature] DATE: 10/15/03</p> <p>DEPUTY P.W. DIRECTOR: [Signature] DATE: 10/15/03</p> <p>TRAFFIC ENGINEER: [Signature] DATE: 10/15/03</p> <p>INSPECTION: [Signature] DATE: 10/15/03</p> <p>STREET SERVICES: [Signature] DATE: 10/15/03</p>	<p>TRAFFIC SIGNAL MODIFICATION</p> <p>TYLER STREET AND ARLINGTON AVENUE</p> <p>SCALE: 1" = 20'</p>	<p>ACCT. NO. 000-00000-00000-00000</p> <p>X-428A</p> <p>SHEET 1 OF 1</p> <p>FILE NO.</p>
	PLANS PREPARED UNDER THE SUPERVISION OF:	<p>MARK GREENWOOD RCE 57989 DATE: 10/15/03</p>						

NO. 57989 10/15/03

CONDUCTOR TABLE

CONTROL FUNCTION	CONDUCTORS	CONDUCTOR RUNS								
		1	2	3	4	5	6	7	8	9
VEHICLE & PEDESTRIAN HEADS, PEDESTRIAN PUSH BUTTONS, SPARES & COMMONS	12 WIRE IMSA	1	1	1	2	1				
	9 WIRE IMSA		1	1	3	6	3	3	2	1
	5 WIRE IMSA									
	3 WIRE IMSA	1	2	1	4	8	4	3	2	1
DETECTOR CABLE	#16/2									
PHASE 1					1	1	1	1	1	1
PHASE 2				3	3	3				
PHASE 3							2	2	2	
PHASE 4				1	1	1				
PHASE 5					3	3	3	3	3	3
PHASE 6										
PHASE 7										
PHASE 8			3	3	3	3				
I.I.S.N.S.	#12	2	2		2	2	2	2	2	2
LUMINAIRES	#8	2	2		2	2	2	2	2	2
SIGNAL SERVICE	#6				2	2	2	2	2	2

CONDUIT SIZE	2"	2"	2.5"	3"	2-3"	3"	3"	2.5"	3"
	(E)	(E)	(E)	(N)	(N)	(N)	(E)	(E)	(E)

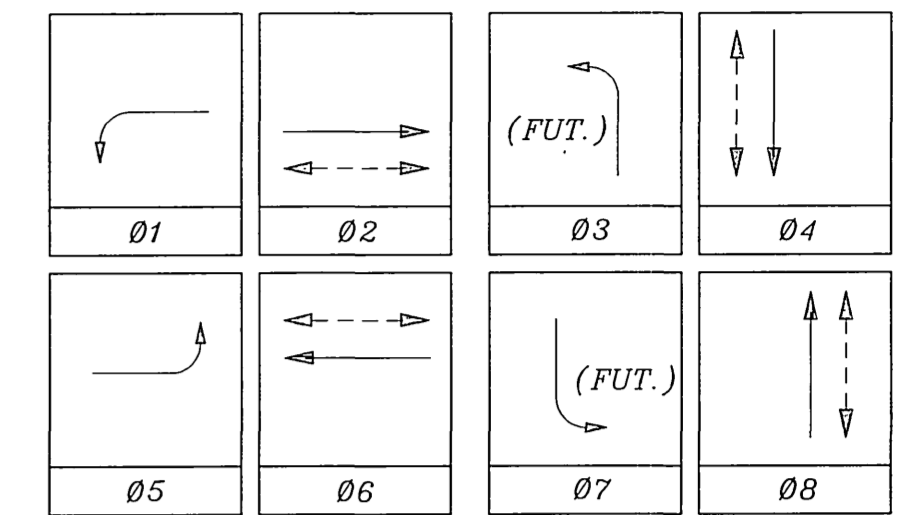
NOTE: SIGNAL SYSTEM SHALL HAVE NEW CABLES AND CONDUCTORS; SEE CONTRACT SPECIAL PROVISIONS FOR ADDITIONAL INFORMATION ON I.M.S.A. CABLE.

DETECTOR SCHEDULE

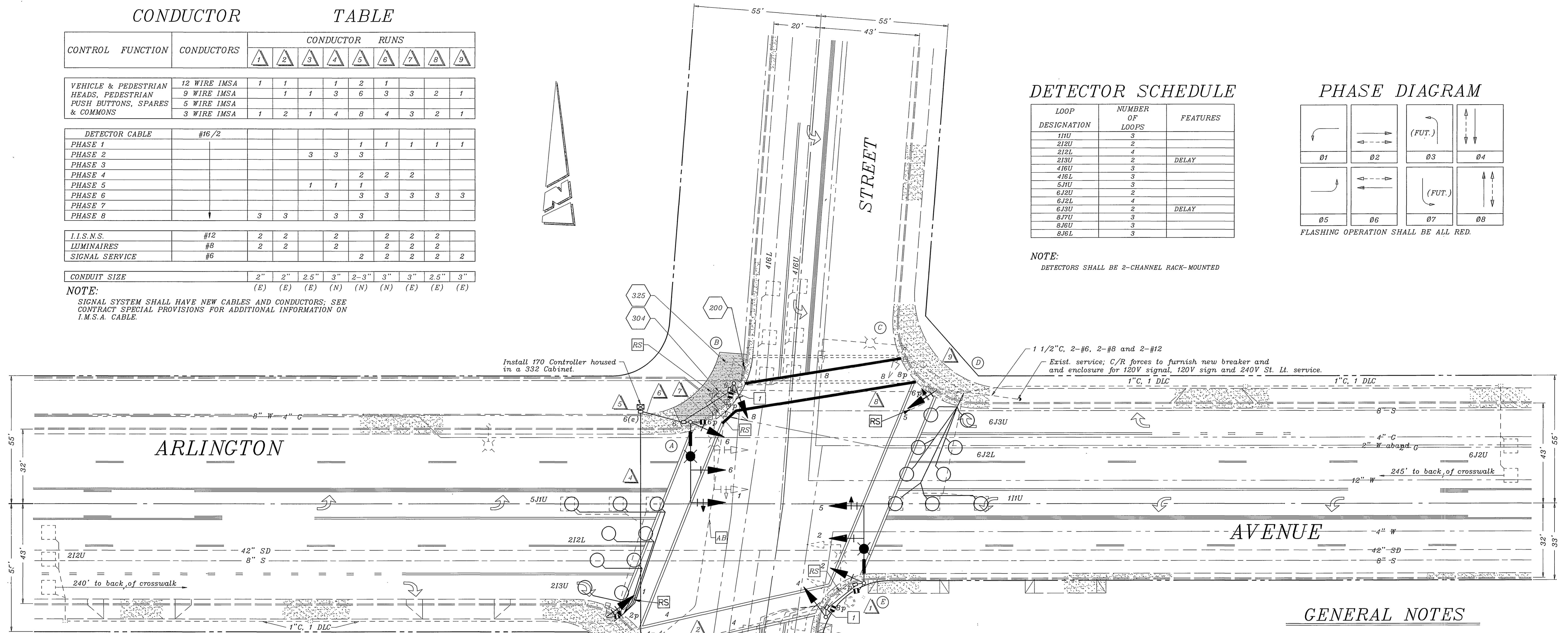
LOOP DESIGNATION	NUMBER OF LOOPS	FEATURES
11U	3	
212U	2	
212L	4	
213U	2	DELAY
416U	3	
416L	3	
511U	3	
6J2U	2	
6J2L	4	
6J3U	2	DELAY
8J7U	3	
8J6U	3	
8J6L	3	

NOTE: DETECTORS SHALL BE 2-CHANNEL RACK-MOUNTED

PHASE DIAGRAM



FLASHING OPERATION SHALL BE ALL RED.



POLE SCHEDULE

STANDARD No.	TYPE	HCT.	SIG. M.A.	LUM. M.A.	LUM. HPSV	I.I.S.N.S. LEGEND	SIGNAL HEAD	SIGNAL MOUNTING VEHICLE	PPB PHASE	REMARKS
(A)	24-4-80(N)	30'	35'(N)	12'(N)	250W(R)	TYLER AV 6300	1W3C(N)	MAS(N)		
							1W3C(R)	MAS(R)		
							1W3C(N)	SV-1-T(N)	SP-1-T(N)	4(N)
(B)	1A(N)	10'					1W3C(N)	TV-1-T(N)	SP-1-T(N)	6(N)
(C)	19-2-70(E)	30'	30'(E)	15'(E)	250W(E)		1W3C(E)	MAS(E)		
							1W3C(E)	SV-1-T(E)	SP-1-T(E)	6(E)
(D)	1A(E)	10'					1W3C(E)	TV-1-T(E)	SP-1-T(E)	8(E)
(E)	24-4-80(N)	30'	35'(N)	12'(N)	250W(R)	TYLER AV 6300	1W3C(N)	MAS(N)		
							1W3C(R)	MAS(R)		
							1W3C(N)	SV-1-T(N)	SP-1-T(N)	4(N)
(F)	1A(N)	10'					1W3C(N)	TV-1-T(N)	SP-1-T(N)	6(N)
(G)	24-3-70(E)	30'	35'(E)	15'(E)	250W(E)		1W3C(E)	MAS(E)		
							1W3C(E)	SV-1-T(E)	SP-1-T(E)	6(E)
										ROTATE PED. SIGNAL AS INDICATED.
(H)	1A(E)	10'					1W3C(E)	TV-1-T(E)	SP-1-T(E)	8(E)
										ROTATE PED. SIGNAL AS INDICATED.

- NEW VEHICULAR HEADS SHALL HAVE ALL 12" LENSES.
- NEW LEFT-TURN HEADS SHALL HAVE ALL ARROWS.
- EQUIPMENT NOT TO BE REUSED SHALL BE SALVAGED.
- (N) = NEW, (E) = EXISTING and (R) = RELOCATE.

PAVEMENT DELINEATION

- Indicates striping and pavement markings to be installed.
 - Indicates striping and pavement markings to remain.
 - Indicates striping and pavement markings to be removed.
- NOTE: All pavement delineation work shall be performed by City of Riverside forces; See Special Provisions.

GENERAL NOTES

- Detector loops shall be installed in the presence of the Traffic Engineer or his representative.
- Typical detector loop spacing: 10', 15', and 30' (where applicable).

CONSTRUCTION NOTES

- Replace existing pullbox with No. 5 or No. 6 pullbox as indicated.
- Construct wheelchair ramp per City of Riverside Standard Drawing No. 304.
- Remove existing sidewalk and wheelchair ramp and construct P.C.C. concrete sidewalk per City of Riverside Standard Drawing No. 325.
- Construct P.C.C. concrete curb per City of Riverside Standard Drawing No. 200.

CONTRACT TE-94-5

ENGINEER IN RESPONSIBLE CHARGE

 RICHARD D. McGRATH
 R.C.E. No. 31952 expires 12-31-96
 DATE 11-13-94

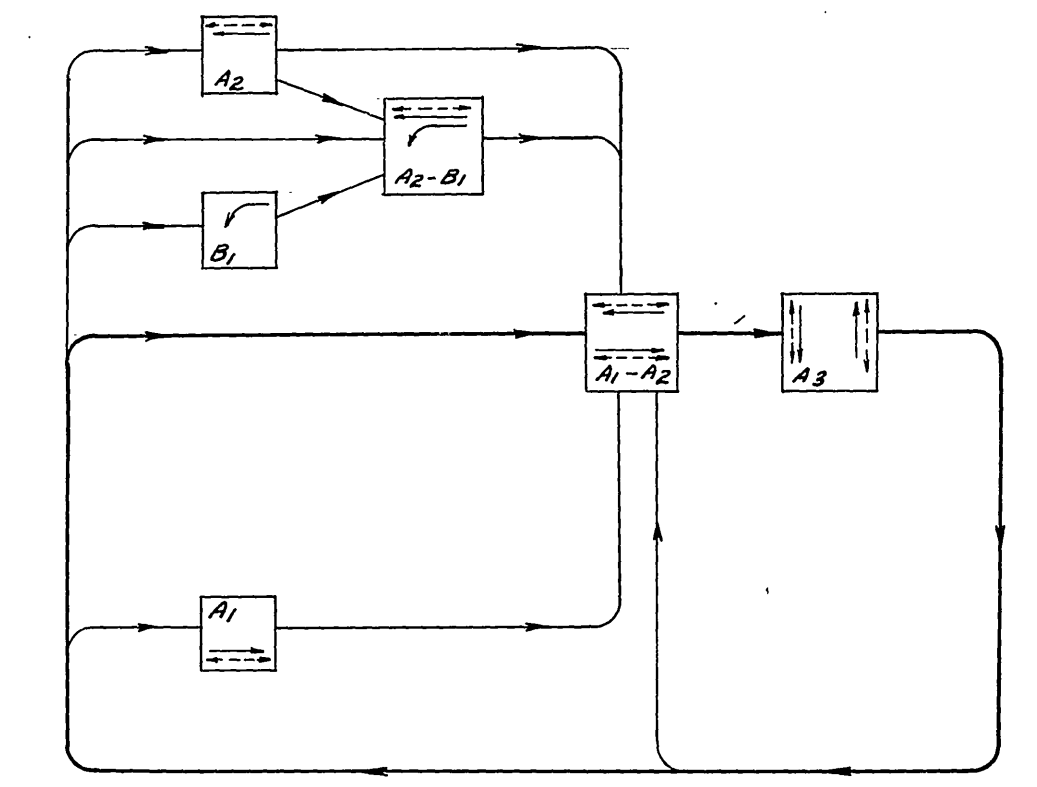
CITY OF RIVERSIDE, CALIFORNIA
 DEPARTMENT OF PUBLIC WORKS
 APPROVED BY: [Signature]
 PRINCIPAL ENGINEER
 P.W. INSPECTION: [Signature]
 TRAFFIC DIVISION: [Signature]
 CHIEF P.W. ENGR. [Signature]
 DATE 11/14/94

TRAFFIC SIGNAL REVISION
ARLINGTON AVENUE @ TYLER STREET
 SCALE: 1" = 20'
 ACCT. NO. 430-541600-440303-35018
X-428
 SHEET 1 OF 1
 FILE NAME: X428.DWG

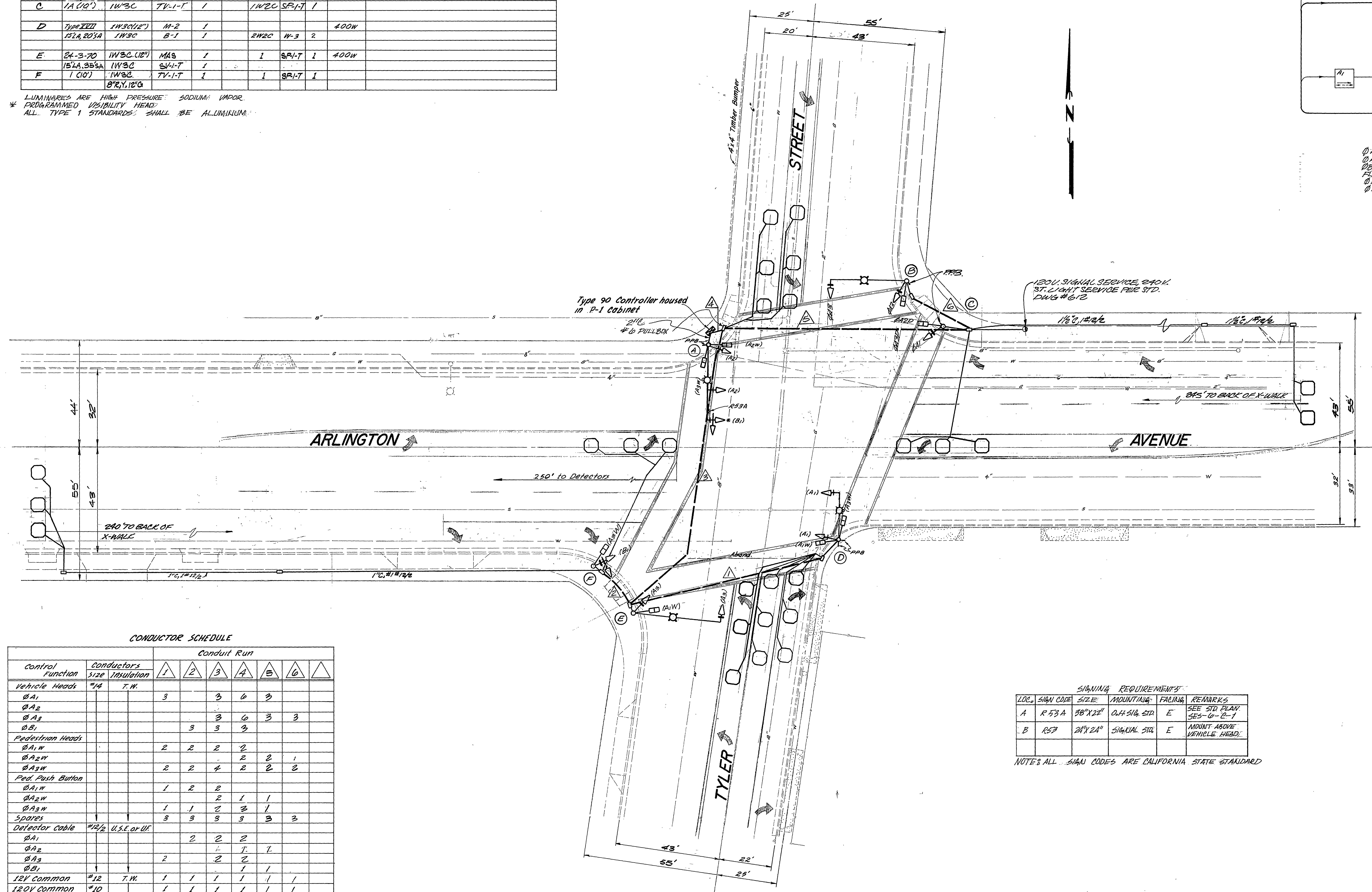
EQUIPMENT SCHEDULE

Location	Standard	Vehicle Equipment				Ped. Equipment			Luminaire	Remarks
		Heads	Mtg's	Back Plate	Louvers	Heads	Mtg's	PPB's		
A	Type III	1W3C(12")	M-2	1					400W	
		15LA, 35SA	1W3C(12")	M-2	1					
B	1A-2-70	1W3C	B-1	1		2W2C	W-3	2	400W	
		15LA, 35SA	1W3C(12")	MAS	1					
C	1A(10')	1W3C	SV-I-T	1		1W2C	SP-I-T	1	400W	
		15LA, 35SA	1W3C	SV-I-T	1					
D	Type III	1W3C(12")	M-2	1					400W	
		15LA, 35SA	1W3C	B-1	1		2W2C	W-3		
E	24-3-70	1W3C(12")	MAS	1			SP-I-T	1	400W	
		15LA, 35SA	1W3C	SV-I-T	1					
F	1(10')	1W3C	TV-I-T	1			SP-I-T	1	400W	
		15LA, 35SA	1W3C	TV-I-T	1					

LUMINAIRES ARE HIGH PRESSURE SODIUM VAPOR.
 * PROGRAMMED VISIBILITY HEAD.
 ALL TYPE 1 STANDARDS SHALL BE ALUMINUM.



PHASE DIAGRAM
 OA1, OA2 - TYPE DD MODULE
 OB1, OB2 - TYPE SF MODULE
 OC1, OC2 - TYPE S MODULE
 FLASHING INDICATIONS:
 OA1, OA2 - YELLOW
 OB1, OB2 - RED



CONDUCTOR SCHEDULE

Control Function	Conductors size	Insulation	Conduit Run							
			1	2	3	4	5	6	7	
Vehicle Heads	#14	T.W.								
OA1			3		3	6	3			
OA2					3	6	3	3		
OA3					3	3	3			
Pedestrian Heads										
OA1W			2	2	2	2				
OA2W					2	2	1			
OA3W			2	2	4	2	2	2		
Ped. Push Button										
OA1W			1	2	2					
OA2W					2	1	1			
OA3W			1	1	2	3	1			
Spares			3	3	3	3	3	3		
Detector Cable	#12/2	U.S.E. or U.F.								
OA1				2	2	2				
OA2					1	1	1			
OA3			2		2	2				
OB1					1	1				
12V Common	#12	T.W.	1	1	1	1	1	1		
120V Common	#10		1	1	1	1	1	1		
Signal Service	#8						2	2		
Luminaires		T.H.W.	2		2		2	2		
Totals	#14	T.W.	12	13	24	28	15	8		
	#12	U.S.E. or U.F.	2	2	4	6	1			
	#10	T.W.	1	1	1	1	1	1		
	#8		1	1	1	1	1	1		
	#9	T.H.W.			2	2	2	2		
Conduit size			2"	2"	2 1/2"	2 3/4"	2 1/2"	2"		

SIGNING REQUIREMENTS

LOC.	SIAM CODE	SIZE	MOUNTING	FACING	REMARKS
A	R 53 A	30" X 24"	OUT SIG. STD.	E	SEE STD. PLAN SES-6-C-1
B	R 57	24" X 24"	SIGNAL SIG.	E	MOUNT ABOVE VEHICLE HEAD

NOTE: ALL SIAM CODES ARE CALIFORNIA STATE STANDARD

As-built per St. Improve R-021 MHL 4/1/84 As-built per R-172-634 (SD) MHL 4/1/80 As-built per Change Order R-230 MHL 7/1/81 As-built per new ledger 36-TYLER MHL 4/1/83 As-built per Cont. TE-72-1 W.R. R-28/83/84 MARK REVISIONS APPR. DATE		CITY OF RIVERSIDE, CALIFORNIA DEPARTMENT OF PUBLIC WORKS	TRAFFIC SIGNALS ARLINGTON AVE. & TYLER STREET	ACC. NO. X-428 SHEET OF FILE NO.
APPROVED BY OFFICE ENGINEER PARK DEPARTMENT TRAFFIC DIVISION ASSISTANT CITY ENGR.	BY DATE	APPROVED BY DIRECTOR OF PUBLIC WORKS DATE	HORIZ. SCALE: 1" = 20' VERT. SCALE: 1" =	DESIGNED BY JMM DRAWN BY JMM CHECKED BY