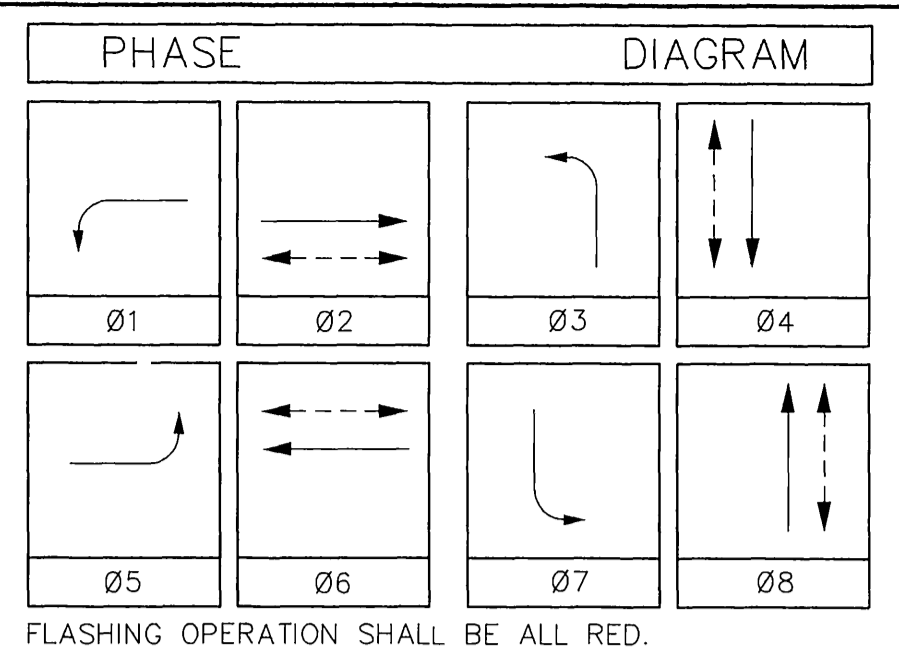


CONDUCTOR		TABLE									
CONTROL FUNCTION	CONDUCTORS		CONDUIT RUNS								
	I.M.S.A. SIZE	INSULATION	1	2	3	3A	4	5	6	7	8
VEHICLE & PEDESTRIAN HEADS, PEDESTRIAN PUSH BUTTONS, SPARES & COMMONS	12	P.E.	1	1	1	3	5	2	2	1	
DETECTOR CABLE	#16/2	P.E.									
PHASE 1							1	1	1	1	
PHASE 2						2	2				
PHASE 3				1	2	1	1				
PHASE 4							1	1			
PHASE 5							1	1			
PHASE 6							2	2	2	2	
PHASE 7				1			1	1			
PHASE 8											
TOTALS			2	2	5	10	5	3	3		
INTERCONNECT CABLE	#19	P.E.									
I.I.S.N.S.	#12	T.W.	2	2	2	2	2	2	2	2	
LUMINAIRES	#8	T.H.W.	2	2	2	2	2	2	2	2	
SIGNAL SERVICE	#6	T.W.				2					
CONDUIT SIZE			2"	2.5"	2"	2"	3.5"	2-3.5"	3.5	3	2"

(E) = EXISTING, (N) = NEW



STANDARD	NO.	TYPE	HGT.	SIG.	M.A.	LUM. M.A.	LUM. HPSV	POLE			REMARKS	
								I.I.S.N.S. LEGEND (N)	SIGNAL MOUNTING VEHICLE	PPB AUDIBLE PHASE		
19-4-80(N)	30'	30'	12'	250W(R)	ARLINGTON AVE 6300	MAS(N)					REUSE MAS HEAD, LUMINAIRE, AND PPB; PROVIDE AND INSTALL EQUIPMENT AS INDICATED; [RS] OTHER EQUIP-	
						MAS(N)					MENT	
						SV-1-T(R)	SP-1-T(R)	((IC))	6(R)			
1A(E)	10'					TV-2-T(N)	SP-1-T(E)	((IP))	8(E)			REUSE PPB; PROVIDE AND INSTALL EQUIPMENT AS INDICATED; [RS] OTHER EQUIP-
												DICATED; [RS] OTHER EQUIP-
26-4-80(N)	30'	40'	12'	250W(R)	RUTLAND AVE 6300	MAS(N)					REUSE MAS HEAD, LUMINAIRE, AND PPB; PROVIDE AND	
						MAS(R)					INSTALL EQUIPMENT AS INDICATED; [RS] OTHER EQUIP-	
						SV-1-T(R)	SP-1-T(N)	((IP))	8(R)			MENT. SEE NOTE 4.
1A(N)	10'					TV-1-T(N)	SP-1-T(N)	((IC))	2(N)			
19-4-80(N)	30'	25'	12'	250W(R)	ARLINGTON AVE 9500	MAS(N)					REUSE MAS HEAD, LUMINAIRE, AND PPB; PROVIDE AND	
						MAS(R)					INSTALL EQUIPMENT AS INDICATED; [RS] OTHER EQUIP-	
						SV-1-T(N)	SP-1-T(R)	((IC))	2(R)			MENT. SEE NOTE 4.
1A(N)	10'					TV-2-T(N)	SP-1-T(N)	((IP))	4(R)			SEE REMARKS FOR (E)
24-4-80(N)	30'	35'	12'	250W(R)	RUTLAND AVE 6400	MAS(N)					REUSE MAS HEAD, LUMINAIRE, AND PPB; PROVIDE AND	
						MAS(R)					INSTALL EQUIPMENT AS INDICATED; [RS] OTHER EQUIP-	
						SV-1-T(R)	SP-1-T(R)	((IP))	4(R)			MENT. [RL] R2-45 WESTERLY (SEE PLAN FOR LOCATION).
1A(N)	10'					TV-1-T(N)	SP-1-T(R)	((IC))	6(R)			SEE REMARKS FOR (E)

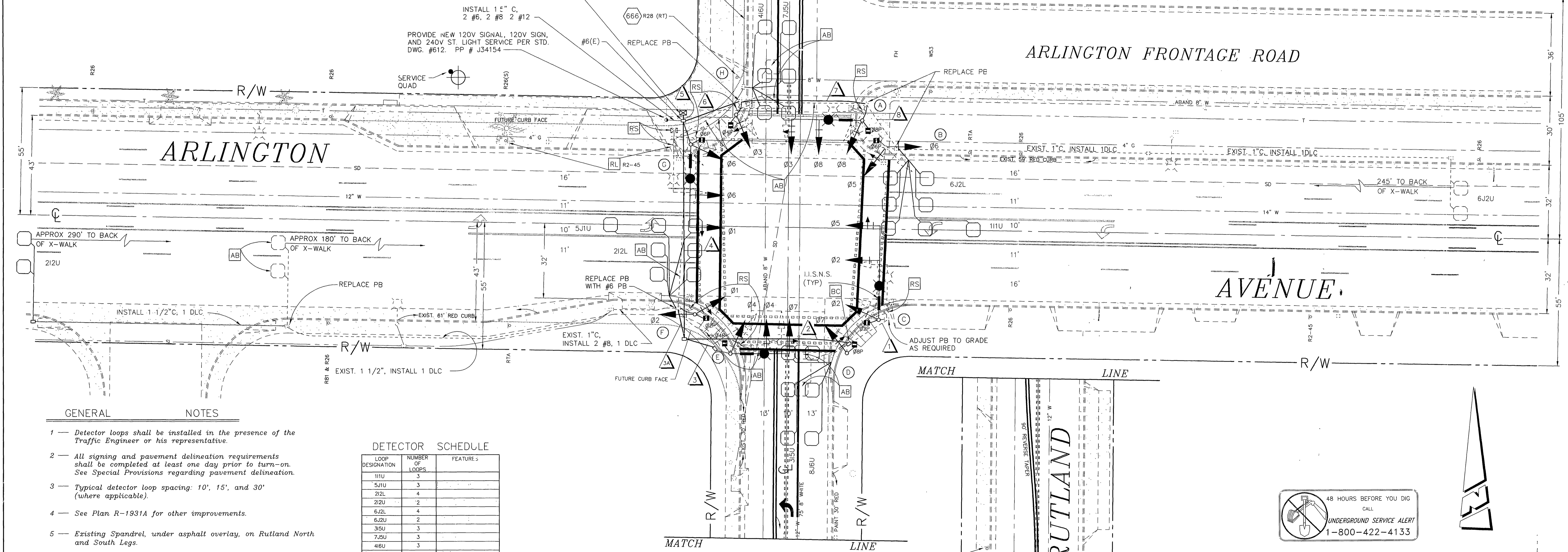
(E) = EXISTING, (N) = NEW, (R) = RELOCATED

Notes:

- New 1A poles shall be Aluminum.
- All vehicular heads shall have 12" lens; left turn heads shall have all arrows.
- ((IC)) or ((IP)) - indicates auditory pedestrian signal to be installed. C: indicates cuckoo sound. P: indicates peep-peep sound.
- Existing poles and arms at Locations E and C, shall become the property of the contractor.

Note:

- Electrical system shall have all new cables and conductors.
- I.M.S.A. cable shall be required as applicable; see Special Provisions.



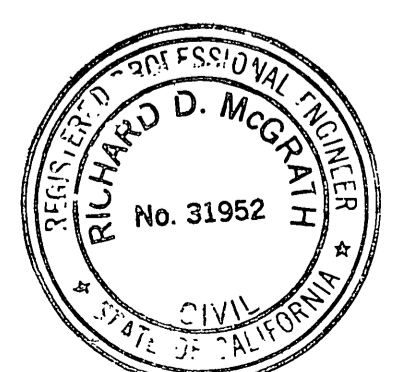
- GENERAL NOTES**
- Detector loops shall be installed in the presence of the Traffic Engineer or his representative.
 - All signing and pavement delineation requirements shall be completed at least one day prior to turn-on. See Special Provisions regarding pavement delineation.
 - Typical detector loop spacing: 10', 15', and 30' (where applicable).
 - See Plan R-1931A for other improvements.
 - Existing Spandrel, under asphalt overlay, on Rutland North and South Legs.
 - Pavement Delineation shown hereon is for reference only. City forces shall perform all permanent painting (installation and removals) work.

LOOP DESIGNATION	NUMBER OF LOOPS	FEATURES
111U	3	
5J1U	3	
212L	4	
212U	2	
6J2L	4	
6J2U	2	
315U	3	
7J5U	3	
416U	3	
8J6U	3	

Detectors shall be 2-channel rack-mounted

PAVEMENT DELINEATION

- Indicates striping and pavement markings to be installed.
- Indicates striping and pavement markings to remain.
- Indicates striping and pavement markings to be removed.



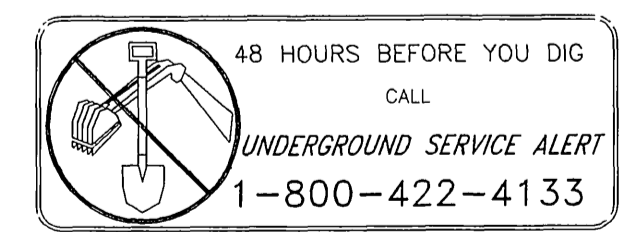
ENGINEER IN RESPONSIBLE CHARGE
 Richard D. McGrath
 RICHARD D. McGRATH
 R.C.E. No. 31952 expires 12/31/99
 DATE July 7, 1999

APPROVED BY: [Signature]
 PRINCIPAL ENGINEER
 P.W. INSPECTION: [Signature]
 TRAFFIC DIVISION: [Signature]
 CHIEF P.W. ENGR: [Signature]
 PUBLIC UTILITIES: [Signature]

CITY OF RIVERSIDE, CALIFORNIA
 DEPARTMENT OF PUBLIC WORKS

TRAFFIC SIGNAL MODIFICATION
ARLINGTON AVENUE
 AND
RUTLAND AVENUE

ACCT. NO. 0430-541600-440125-35058
X-432
 SHEET 1 OF 1



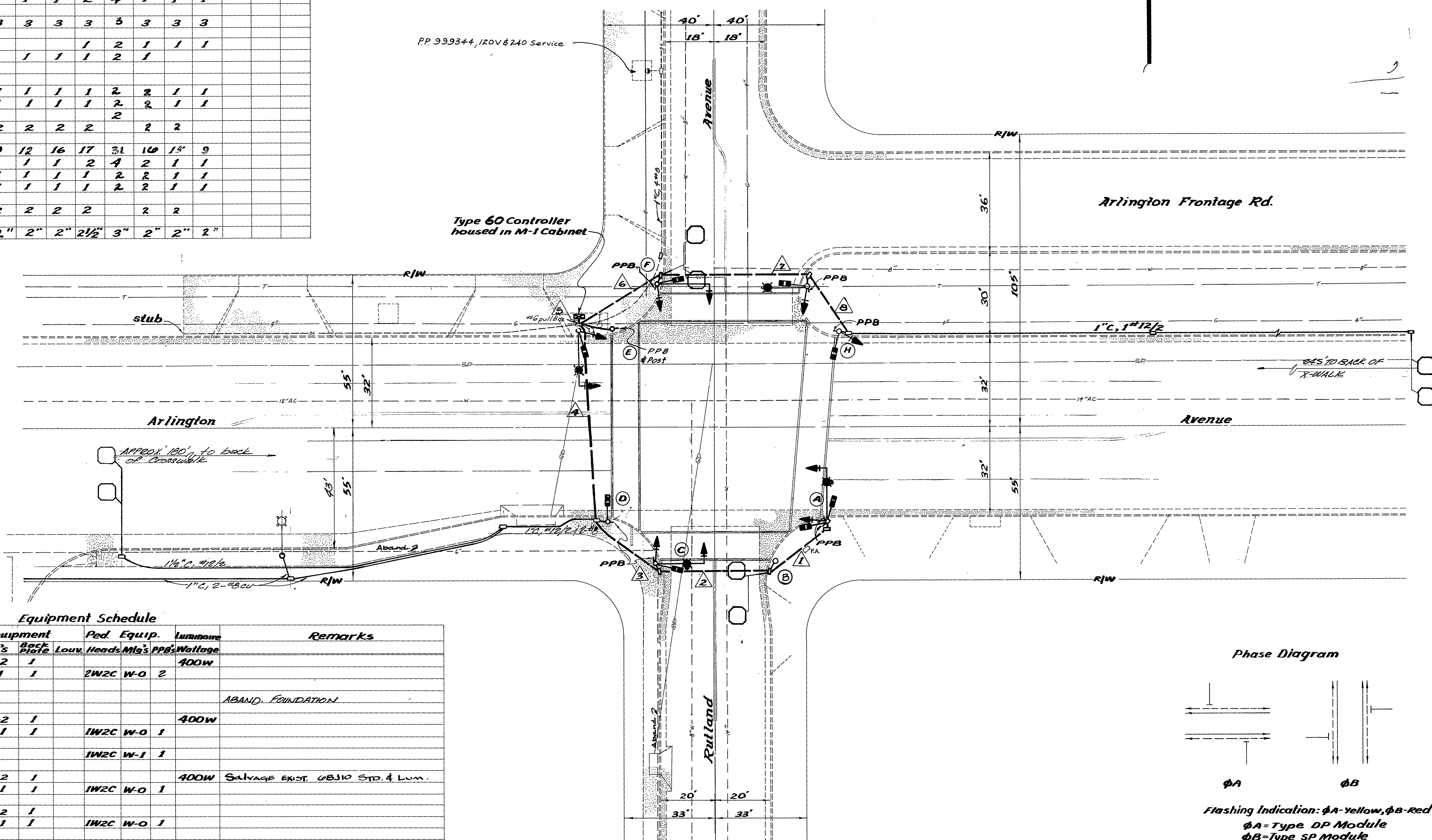
FEDERAL AID PROJECT NO. STPLNHG-5058(19)

CONTRACTOR'S LICENSE REQUIREMENTS "A" OR "C-10" **CONTRACT TE-94-3**

SCALE: 1" = 20'

Conductor Schedule

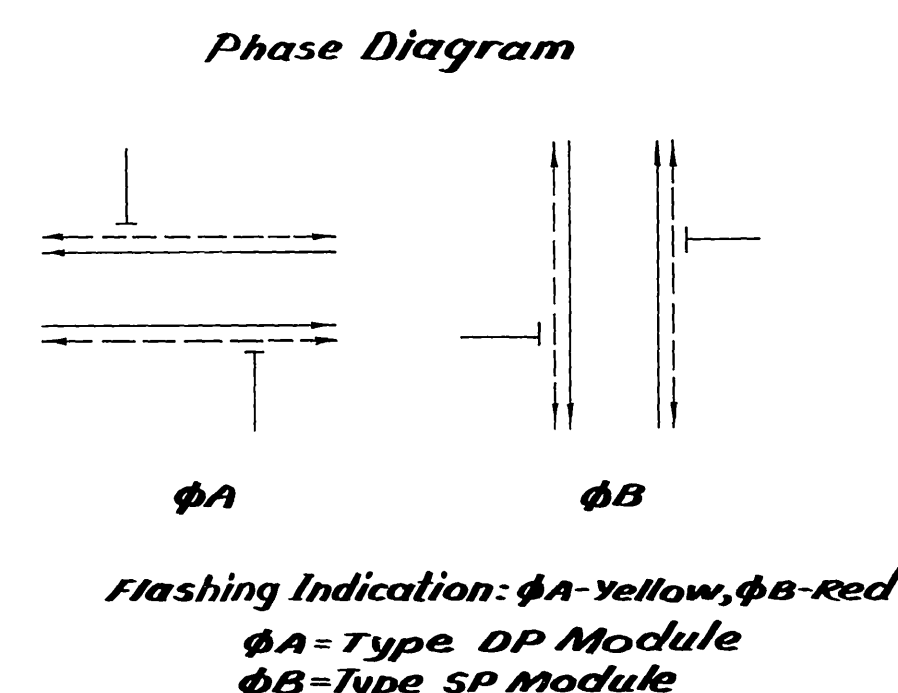
Control Function	Conductors		Conduit Run											
	Size	Insulation	1	2	3	4	5	6	7	8	9	10	11	12
Vehicle Heads	#14	T.W.	3	3	3	3	4	3	3	3				
φA														
φB														
φC (future)														
Ped. Heads			2	2	2	2	4	2	2					
φAw														
φBw			2	2	2	2	4	2	2					
Ped. Push Button			1	1	2	2	4	2	1					
φAw														
φBw			1	1	1	2	4	1	1					
Spares			3	3	3	3	3	3	3					
Detector Cable	#12	P.E.				1	2	1	1					
φA														
φB			1	1	1	2	1							
φC (future)														
12V Common	#12	T.W.	1	1	1	1	2	2	1					
120V Common	#10		1	1	1	1	2	2	1					
Signal Service	#8					2								
Luminaires		T.H.W.	2	2	2	2		2	2					
Totals	#14	T.W.	9	12	16	17	31	10	15	9				
	#12	P.E.		1	1	2	4	2	1	1				
	#12	T.W.	1	1	1	1	2	2	1	1				
	#10		1	1	1	1	2	2	1	1				
	#8	T.H.W.	2	2	2	2		2	2					
Conduit Size			2"	2"	2"	2 1/2"	3"	2"	2"	2"				



Equipment Schedule

Location	Standard	Vehicle Equipment			Ped. Equip.			Luminaire	Remarks
		Heads	Mfg's	Back Plate	Louv.	Heads	Mfg's		
A	Type XVII 151A, 205A	1W3C(12") 1W3C	M-2 B-1	1 1				400W	
B									ABAND. FOUNDATION
C	Type XVIII 101A, 105A	1W3C(12") 1W3C	M-2 B-1	1 1				400W	
D	Type I								
E	Type XVII 151A, 205A	1W3C(12") 1W3C	M-2 B-1	1 1				400W	SALVAGE EXIST. 08310 STD. & Lum.
F	Type XVII 205A	1W3C(12") 1W3C	M-2 B-1	1 1					
G	Type IX 151A	1W3C(12")	B-1	1				400W	
H	Type I	1W3C	A-2	1					

All TYPE I standards are aluminum.
Luminaires are High Pressure Sodium Vapor.



As Built per Cont. 73-1 As Built per Cont. TB 73-1 Deleted Loc. (B), incorporated to Loc. (A) Re-Built per R-2711	12-15-73 AS 12-9-76 MKC 4-3-81 MKC 7-3-81	CITY OF RIVERSIDE, CALIFORNIA PUBLIC WORKS DEPARTMENT	TRAFFIC SIGNALS	ACCOUNT No. 30-570-302-07 DRAWING NUMBER
APPROVED BY PRINCIPAL ENGINEER PARK DEPARTMENT TRAFFIC DIVISION CHIEF PUB. WKS. ENGR.	BY DATE	APPROVED BY DIRECTOR OF PUBLIC WORKS	ARLINGTON AVENUE AND RUTLAND AVENUE	X-432 SHEET 1 OF 1
DESIGNED BY JMW DRAWN BY JMW CHECKED BY	APPR. DATE	DATE	SCALE: 1" = 20'	