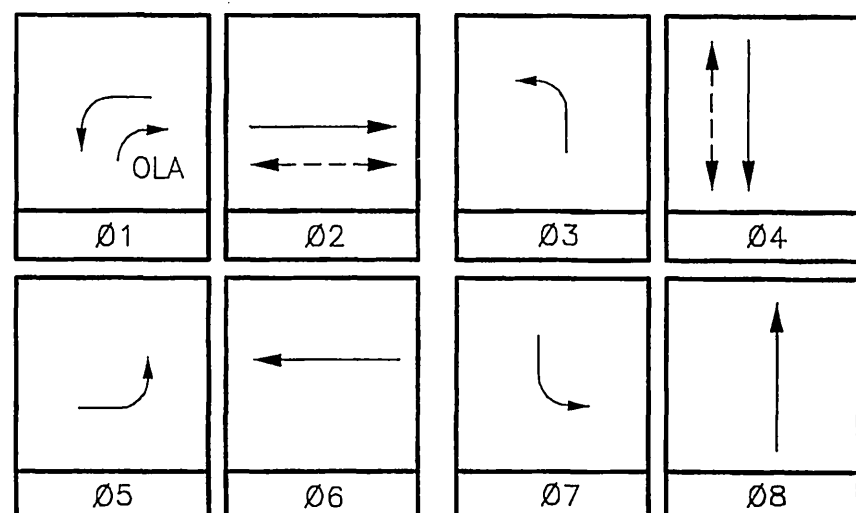


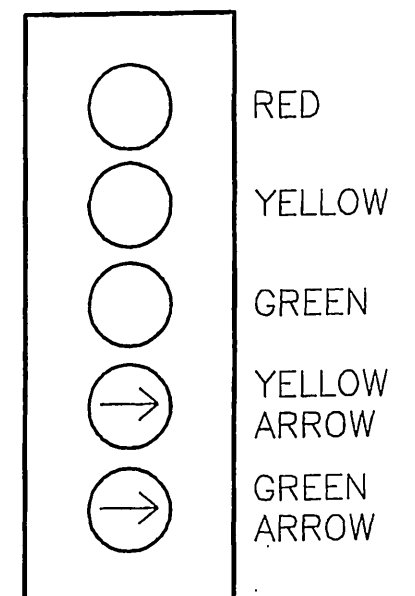
GENERAL NOTES:

- DETECTOR LOOPS SHALL BE INSTALLED IN THE PRESENCE OF THE TRAFFIC ENGINEER OR HIS REPRESENTATIVE.
- ALL SIGNING, STRIPING, AND PAVEMENT MARKINGS REQUIREMENTS SHALL BE COMPLETED AT LEAST ONE DAY TO TURN-ONS.
- TYPICAL DETECTOR LOOP SPACING: 10', 15' AND 30' (WHERE APPLICABLE).
- ALL VEHICLE HEADS SHALL HAVE 12" LENSES WITH RED, YELLOW, AND GREEN 'LED' TYPE INDICATIONS
- PEDESTRIAN SIGNAL HEADS SHALL HAVE 'LED' TYPE INDICATIONS.
- PEDESTRIAN PUSH BUTTON SHALL BE ADA APPROVED TYPE.
- SEE PLAN XL-213 AND XL-531 FOR PAVEMENT DELINEATION.
- SEE PLAN _____ FOR STREET IMPROVEMENTS.

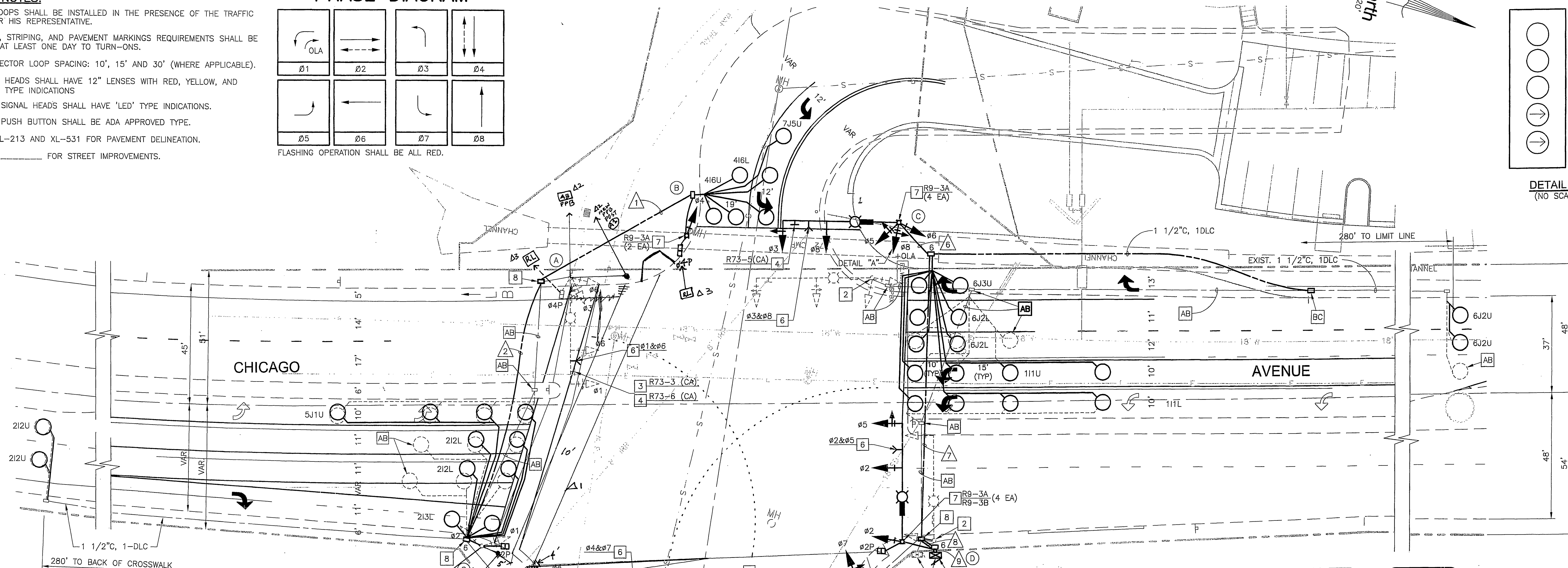
PHASE DIAGRAM



FLASHING OPERATION SHALL BE ALL RED.



DETAIL "A"
(NO SCALE)



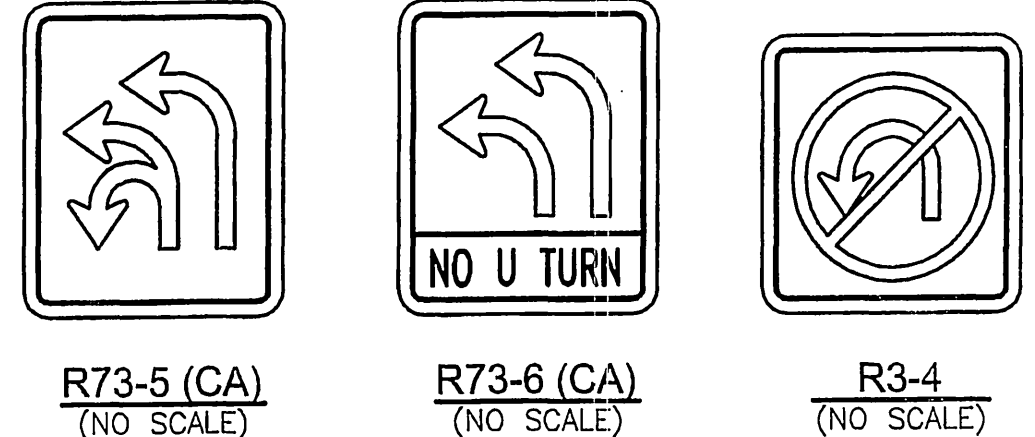
CONDUCTOR TABLE

CONTROL FUNCTION	CONDUCTORS	CONDUCTOR RUNS								
		1	2	3	4	5	6	7	8	9
VEHICLE & PEDESTRIAN HEADS, PEDESTRIAN PUSH BUTTONS, SPARES & COMMONS	12 WIRE IMSA	1	3	4	5	6	2	2	9	9
	3 WIRE IMSA	1	2	3	4	5	*2	*2	8	8
DETECTOR CABLE	#16/2	-	-	-	-	-	-	-	-	-
PHASE 1		-	-	-	-	-	-	-	2	2
PHASE 2		-	-	3	3	3	-	-	3	3
PHASE 3		-	-	-	-	2	-	-	2	2
PHASE 4		2	2	2	2	2	-	-	2	2
PHASE 5		-	-	1	1	1	-	-	1	1
PHASE 6		-	-	-	-	-	-	-	3	3
PHASE 7		1	1	1	1	1	-	-	1	1
PHASE 8		-	-	-	-	3	-	-	3	3
TOTALS		3	3	7	7	12	-	-	5	17
I.I.S.N.S.	#12	-	2	2	2	2	2	2	-	-
LUMINAIRES	#8	-	2	2	2	2	2	2	-	-
SIGNAL SERVICE	#6	-	-	-	-	2	-	-	2	2
EVP CABLE		-	1	1	2	2	1	1	2	2
CONDUIT SIZE		2"	3"	3"	3"	3"	3"	3"	2-4"	2-4"
(E)=EXISTING (N)=NEW		(N)	(N)	(E)	(N)	(E)	(N)	(N)	(N)	(N)

NOTE: REMOVE ALL EXISTING SIGNAL CABLES AND CONDUCTORS. FURNISH AND INSTALL NEW SIGNAL CABLES AND CONDUCTORS.
* FUTURE

CONSTRUCTION NOTES:

- REMOVE EXISTING CONTROLLER ASSEMBLY AND TYPE P CABINET. REMOVE EXISTING FOUNDATION. INSTALL MODEL 170 CONTROLLER ASSEMBLY WITH MODEL 332 CABINET.
- REMOVE EXISTING POLE, EQUIPMENT AND FOUNDATION.
- REMOVE EXISTING MAST ARM MOUNTED SIGN.
- INSTALL NEW MAST ARM MOUNTED SIGN AS INDICATED.
- CONTRACTOR SHALL FURNISH AND INSTALL CLARY BATTERY BACK UP SYSTEM MODEL "SP1250-R/N PLUS". BATTERY SHALL BE HOUSED IN AN EXTERNAL CABINET.
- INSTALL EMERGENCY VEHICLE PRE-EMPTION DETECTORS.
- INSTALL SIGN ON THE POLE.
- REMOVE EXISTING PULLBOX AND INSTALL NEW PULLBOX.



EQUIPMENT SCHEDULE

NO.	SIGNAL STANDARD TYPE	H'GHT	M.A.	LUMINAIRE M.A.	H.P.S.V.	I.I.S.N.S. LEGEND	SIGNAL MOUNTINGS			PPB PHASE	REMARKS
							VEHICLE	PEDESTRIAN	AUDIBLE		
A1	26A-4-70	35'	40'	15'	400W	Central	2-MAS	SV-2-T	SP-1-T	A3	INSTALL NEW ADA PPB
A2	PPB POST	3'10"									REMOVE EXIST. PPB AND PEDESTRIAN HEAD
B	1-A(N)	10'					TV-1-T(N)	SP-1-T		A3	RELOCATE PEDESTRIAN HEAD A3
C	26-4-100(N)	30'	45'(N)	15'(N)	400W(N)	Chicago	2-MAS(N)	SV-3-T(N)			F=20' REMOVE EXIST. POLE AND FOUNDATION
D	26-4-100(N)	30'	45'(N)	15'(N)	400W(N)	Central	2-MAS(N)	SV-1-T(N)	SP-1-T(N)		REMOVE EXIST. POLE AND FOUNDATION F=20'
E	1A (N)	10'					TV-2-T(N)			2(N)	REMOVE EXIST. POLE
F	61-5-100(N)	30'	65'(N)	15'(N)	400W(N)	Chicago	2-MAS(N)	SV-1-T(N)	SP-1-T(N)	2(N)	F=20' REMOVE EXIST. POLE AND FOUNDATION
G	1-A	10'					TV-2-T	SP-1-T(R)			ROTATE PED. HEAD

ALL EXISTING UNLESS NOTED OTHERWISE.
(N) - NEW EQUIPMENT
(R) - RELOCATED EQUIPMENT

IMPORTANT NOTICE
Section 4216/4217 of the Government Code requires a Dig Alert identification number to be placed before a permit to excavate will be valid. For your Dig Alert ID, Number call CALL TOLL FREE 48 HOURS BEFORE YOU DIG UNDERGROUND SERVICE ALERT 1-800-227-2600

PREPARED BY:
PMK Associates, Inc
IRVINE, CA
(949) 466-3126
DATE 1-8-07

PREPARED BY:
WRC Consultant Services Inc.
1800 E. Garry Ave Suite 213
Santa Ana, CA 92705
Tel: (949) 833-8388
Fax: (949) 833-8380
LAN-YIN LI WEBER, P.E.
R.C.E. No. 35894 expires 12-31-07

DESIGNED BY: _____ DRAWN BY: _____ CHECKED BY: _____

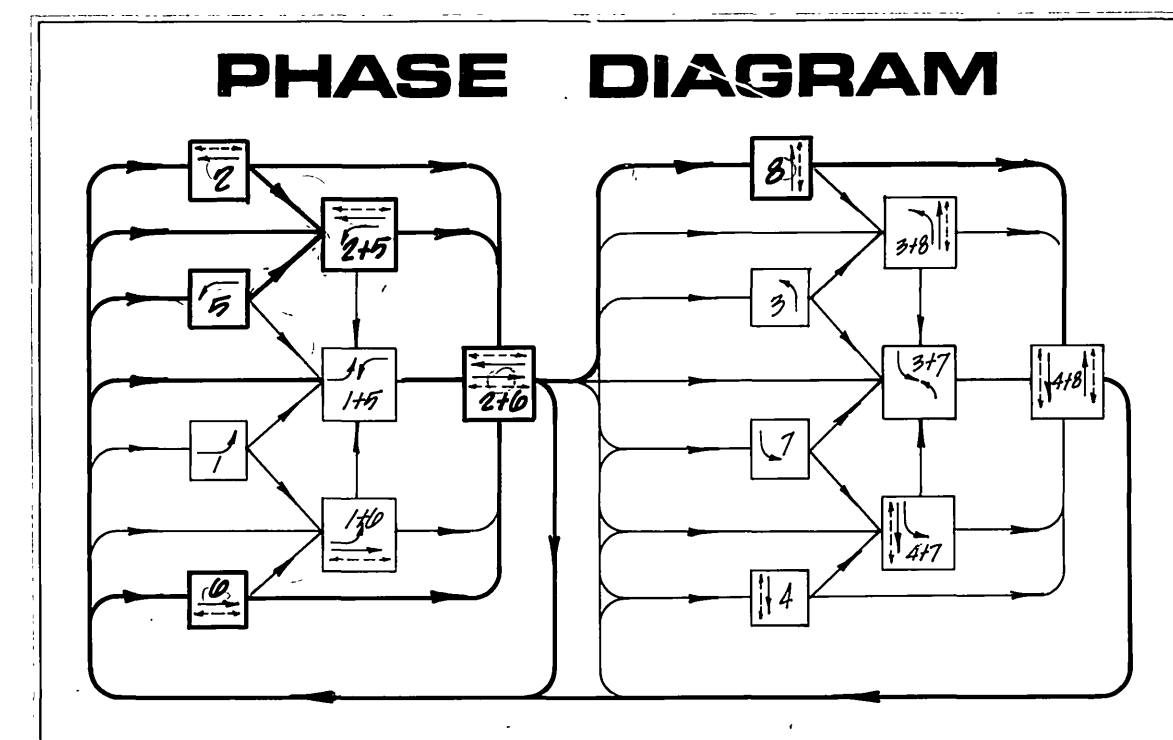
CITY OF RIVERSIDE, CALIFORNIA
PUBLIC WORKS DEPARTMENT
APPROVED BY: _____ DATE: 1/8/07
CITY ENGINEER

ANDULKA PARK
PHASE 2 IMPROVEMENTS
CENTRAL AVENUE AT CHICAGO AVENUE
SIGNAL MODIFICATION PLAN
HORIZONTAL SCALE: AS NOTED VERTICAL SCALE: AS NOTED

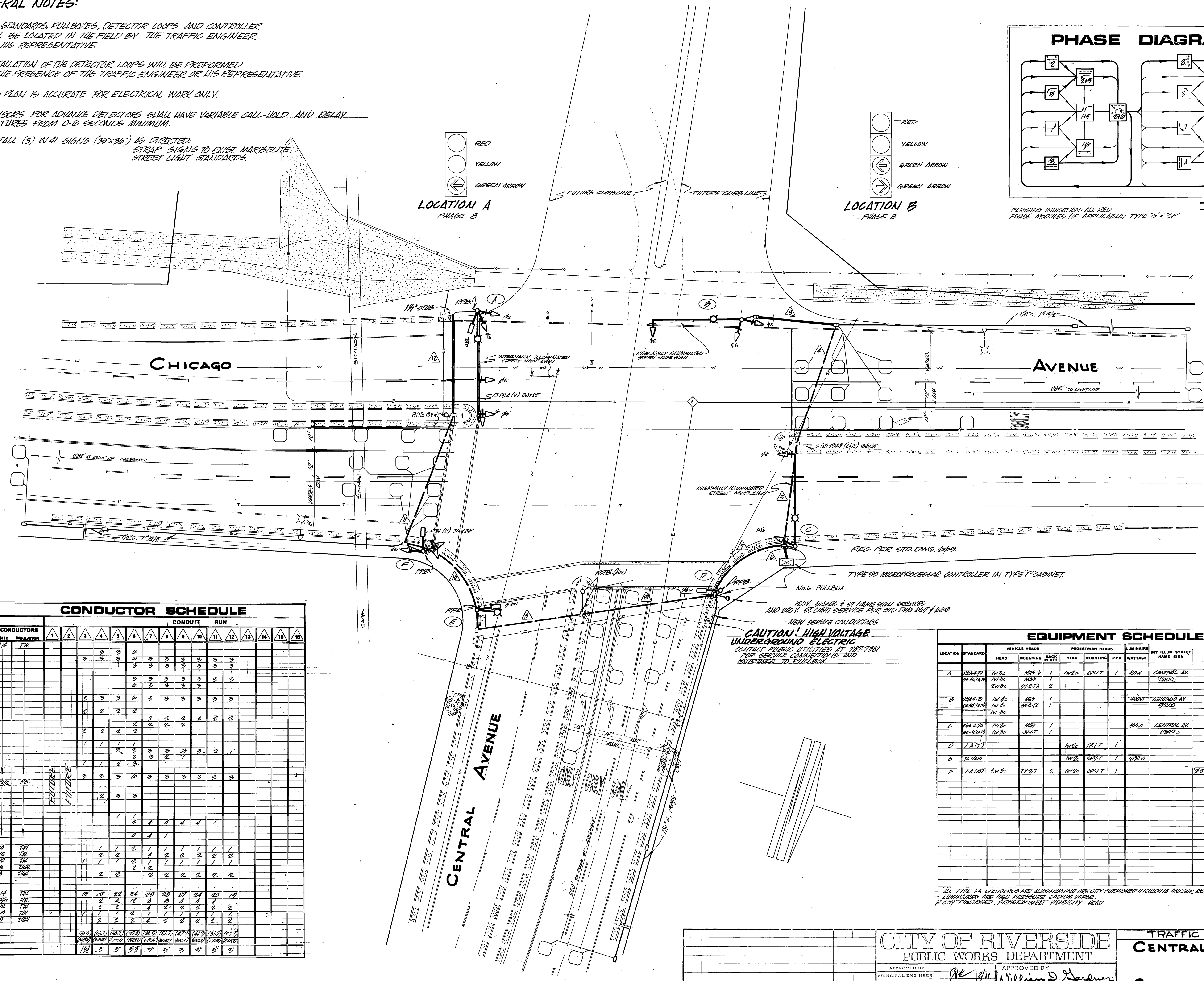
ACCT. NO. 9205300611 483002X
X-445A
SHEET 1 OF 1

GENERAL NOTES:

1. ALL STANDARDS, PULLBOXES, DETECTOR LOOPS AND CONTROLLER WILL BE LOCATED IN THE FIELD BY THE TRAFFIC ENGINEER OR HIS REPRESENTATIVE.
2. INSTALLATION OF THE DETECTOR LOOPS WILL BE PERFORMED IN THE PRESENCE OF THE TRAFFIC ENGINEER OR HIS REPRESENTATIVE.
3. THIS PLAN IS ACCURATE FOR ELECTRICAL WORK ONLY.
4. SENSORS FOR ADVANCE DETECTORS SHALL HAVE VARIABLE CALL-HOLD AND DELAY FEATURES FROM 0-6 SECONDS MINIMUM.
5. INSTALL (3) WAI SIGNS (30"x36") AS DIRECTED STRAP SIGNS TO EXIST MARBELITE STREET LIGHT STANDARDS.



FLASHING INDICATION: ALL RED PHASE MODULES (IF APPLICABLE) TYPE "S" 1" 20"



CONDUCTOR SCHEDULE		CONDUIT RUN																
CONTROL FUNCTION	CONDUCTORS SIZE INSULATION	1	2	3	4	5	6	7	8	9	10	11	12	13	14	15	16	
VEHICLE HEADS PHASE 1	#14 TR			3	3	3	3	3	3	3	3	3	3	3	3	3	3	
PHASE 2 (FUT)	#14 TR			2	2	2	2	2	2	2	2	2	2	2	2	2	2	
PHASE 3 (FUT)	#14 TR			1	1	1	1	1	1	1	1	1	1	1	1	1	1	
PHASE 4 (FUT)	#14 TR			1	1	1	1	1	1	1	1	1	1	1	1	1	1	
SPACED DETECTOR CABLE PHASE 1	#14 TR			3	3	3	3	3	3	3	3	3	3	3	3	3	3	
PHASE 2	#14 TR			3	3	3	3	3	3	3	3	3	3	3	3	3	3	
PHASE 3	#14 TR			3	3	3	3	3	3	3	3	3	3	3	3	3	3	
PHASE 4	#14 TR			3	3	3	3	3	3	3	3	3	3	3	3	3	3	
TEN COMMON	#14 TR			1	1	1	1	1	1	1	1	1	1	1	1	1	1	
INT. ALL ST. NAME SIG	#12 TR			2	2	2	2	2	2	2	2	2	2	2	2	2	2	
720 V. COMMON	#10 TR			1	1	1	1	1	1	1	1	1	1	1	1	1	1	
SIGNAL SERVICE	#8 TR			2	2	2	2	2	2	2	2	2	2	2	2	2	2	
LUMINAIRE	#8 TR			2	2	2	2	2	2	2	2	2	2	2	2	2	2	
INTERCONNECT	#8 TR			2	2	2	2	2	2	2	2	2	2	2	2	2	2	
TOTALS				17	17	22	22	24	24	28	28	27	27	27	27	27	27	
CONDUIT SIZE			1 1/2"	2"	2"	2 1/2"	2 1/2"	3"	3"	3"	3"	3"	3"	3"	3"	3"	3"	

EQUIPMENT SCHEDULE										
LOCATION	STANDARD	VEHICLE HEADS		PEDESTRIAN HEADS		LUMINAIRE		INT ILLUM STREET NAME SIGN	REMARKS	
		HEAD	MOUNTING	HEAD	MOUNTING	PPB	WATTAGE			
A	SEA-470 SEA-490	1w3c 1w3c	MS-3 MS-3	1 1	1w2c 1w2c	SP-IT SP-IT	1 1	400W 400W	CENTRAL AV VERDO.	
B	SEA-470 SEA-490	1w4c 1w4c	MS-3 MS-3	1 1	1w2c 1w2c	SP-IT SP-IT	1 1	400W 400W	CHICAGO AV VERDO.	
C	SEA-470 SEA-490	1w3c 1w3c	MS-3 MS-3	1 1	1w2c 1w2c	SP-IT SP-IT	1 1	400W 400W	CENTRAL AV VERDO.	
D	1A (F)				1w2c	TR-IT	1			
E	1E-700	1w3c	MS-3		1w2c	SP-IT	1	200W		
F	1A (O)	1w3c	MS-3	2	1w2c	SP-IT	1		2" x 5" VERDO - 5" x 5" 1" GREEN ARROW	

- ALL TYPE 1A STANDARDS ARE ALUMINUM AND ARE CITY FURNISHED INCLUDING ANCHOR BOLTS.
- LUMINAIRE ARE HIGH PRESSURE SODIUM VAPOR.
- CITY FURNISHED, PROGRAMMED VISIBILITY HEAD.

<p>CITY OF RIVERSIDE PUBLIC WORKS DEPARTMENT</p> <p>APPROVED BY PRINCIPAL ENGINEER PARK DEPARTMENT TRAFFIC DIVISION CHIEF P.W. ENGINEER PUBLIC UTILITIES</p>		<p>APPROVED BY WILLIAM D. SANDERS PUBLIC WORKS DIRECTOR</p> <p>DATE 8/11/78</p>		<p>TRAFFIC SIGNALS CENTRAL AVENUE @ CHICAGO AVENUE</p>		<p>ACCOUNT NO. 32574-378-07 X-445 SHEET 1 OF 1 FILE NO.</p>	
<p>DESIGNED BY [Signature]</p>		<p>APPROVAL DATE 4/16/79</p>		<p>HORIZ. SCALE: 1" = 20'</p>		<p>VERT. SCALE: 1" = 10'</p>	