

CONTROL FUNCTION	CONDUCTORS	CONDUIT RUN																			
		1	2	3	4	5	6	7	8	9	10	11	12	13	14	15	16	17	18	19	20
VEHICLE HEADS	#14 TW																				
OL	#14 TW	3	3	3	3	3	3	3	3	3	3	3	3	3	3	3	3	3	3	3	3
VEHICLE HEADS	#14 TW																				
PEDESTRIAN HEADS	#14 TW																				
SPACES	#14 TW	1	1	1	1	1	1	1	1	1	1	1	1	1	1	1	1	1	1	1	1
DETECTORS	#14 TW	1	1	1	1	1	1	1	1	1	1	1	1	1	1	1	1	1	1	1	1
INTERCONNECT	#14 TW	1	1	1	1	1	1	1	1	1	1	1	1	1	1	1	1	1	1	1	1
TOTAL	#14 TW	16	21	26	47	16	12														

\*\* Includes additional cables for future application. Interconnect shall be 19 ga. twisted pair (See Special Provisions for details). NOTE: The Contractor shall leave an additional 30 feet of surplus cable and conductors distributed in the cabinet and pullboxes for runs 1 thru 4.

**CONSTRUCTION NOTES**

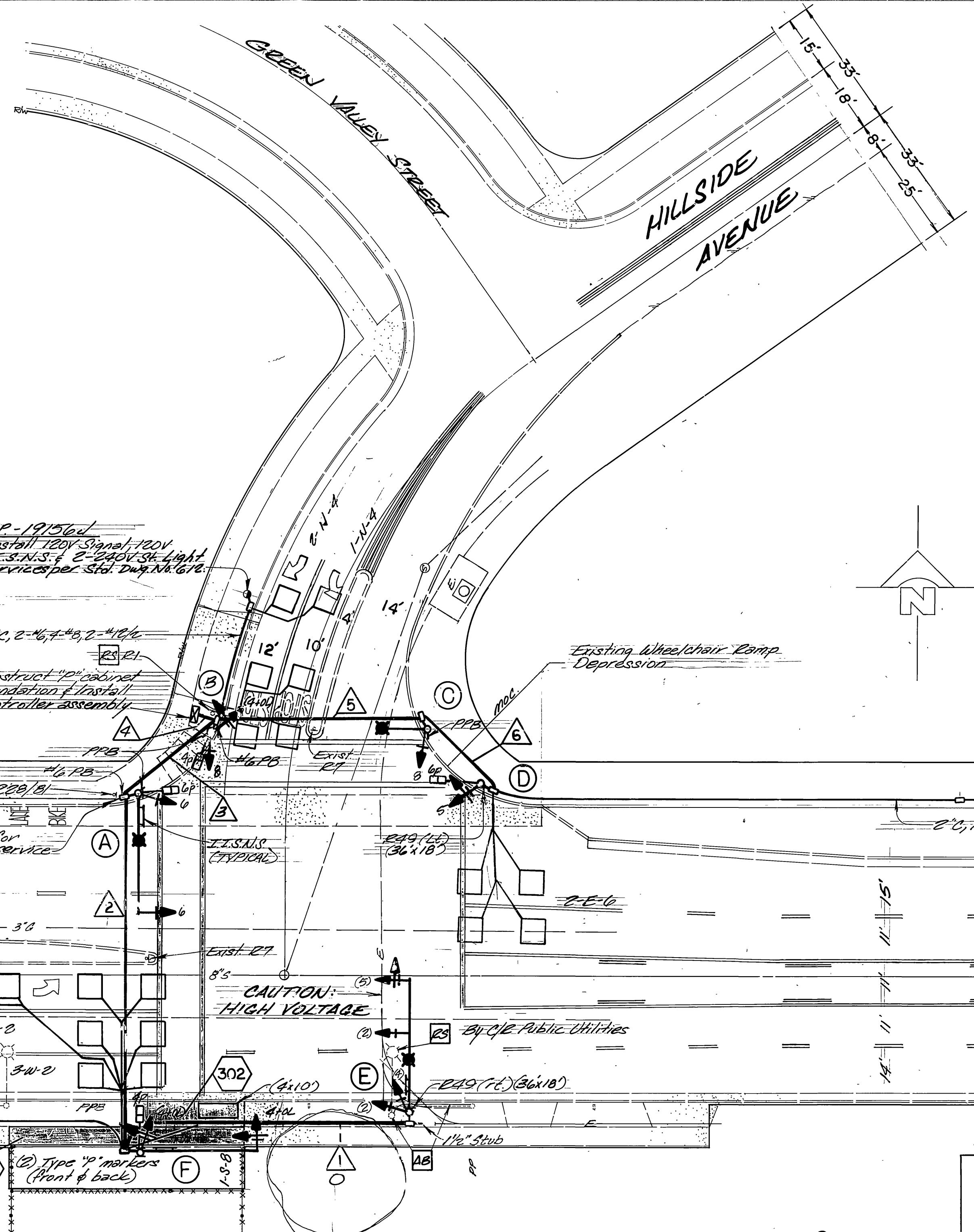
- Detector loops shall be installed in the presence of the Traffic Engineer or his representative.
- All signs, striping, and pavement marking (installations and/or removals) requirements must be completed at least one (1) day prior to turn on.
- Abandoned St. Lt. foundation must be completely removed.
- Install pullrope in all advanced detector conduits
- Typical spacing for detector loops: 10', 15', & 30' where applicable.
- Construct Driveway Approach per Std. Dwg. #302. (A=20', B=A+7') meet existing.
- Construct P.C.C. Sidewalk per Std. Dwg. #325.
- Install W41 sign & post on Hillside, south-bound approach, to be located in the field.

**STRIPING LEGEND**

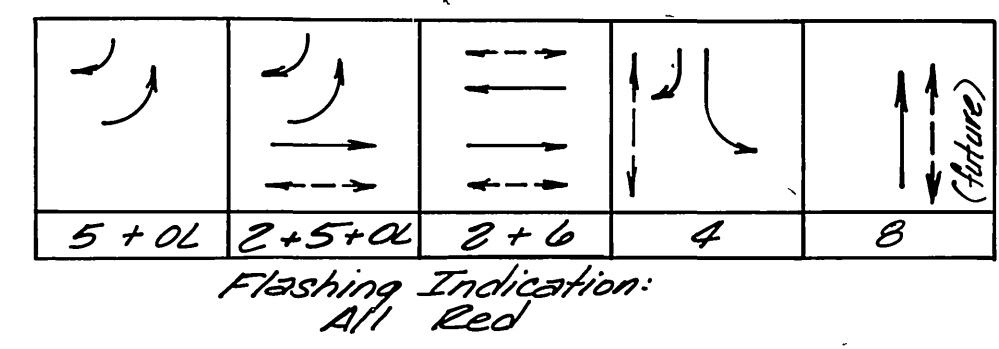
- New striping and/or pavement markings to be installed.
- Existing striping and/or pavement markings to remain.
- Existing striping and/or pavement markings to be removed.

**STRIPING QUANTITIES**

REMOVALS: 55 S.F.  
INSTALLATIONS: 250 S.F. (pavement markings)



**PHASE DIAGRAM**



**EQUIPMENT SCHEDULE**

LOCATION	STANDARD	VEHICLE HEADS		PEDESTRIAN HEADS		LUMINAIRE	INT ILLUM STREET NAME SIGN	REMARKS
		HEAD	MOUNTING	HEAD	MOUNTING			
A	19-E-80 12A, 205A	1W3C 1W3C	MAS SV-1-T	1 1	1W2C SP-1-T	250W	Hillside 8'x30'	Salvage post, relocate R29/b1 to new std.
B	1A(0)	1W3E	TV-2-T	2	1W2C SP-1-T			City furnished, Salvage R1 sign & post.
C	Type 15 12CA	1W3C	SV-1-T	1		250W		City furnished
D	1A(0)	1W3C	TV-1-T	1	1W2C SP-1-T			City furnished, strap R29 sign to standard.
E	24-4-80 12A, 205A	1W3C 1W3C	MAS SV-2-TB	1 2		250W	Hillside 8'x30'	Remove & salvage St. Lt. luminaire & St. Strap R29 sign to new standard.
F	18-2-80 265A	1W3C 1W3C	MAS SV-1-T	1	1W2C SP-1-T		Arlington 8'x30'	Strap 'F' markers and R29 sign to standard. T.I.S.A.S. sign message on one side only.

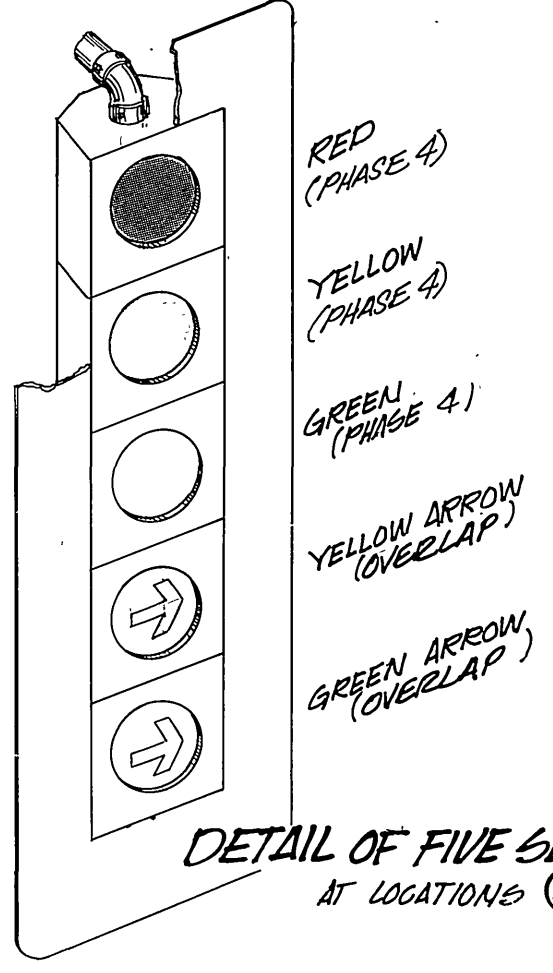
NOTES:  
1. Luminaires shall be High Pressure Sodium Vapor.  
2. All Vehicular Heads shall have (2) 4 pins left-turn heads shall be all screws; see detail for 5 section head.  
3. All Type 1A standards shall be aluminum.  
4. If Remarks indicate City furnished, the standard at that location will be provided by the City (See Special Provisions). Other standards will be supplied by the Contractor.  
5. Abandoned Foundations shall be completely removed.

**DETECTOR SCHEDULE**

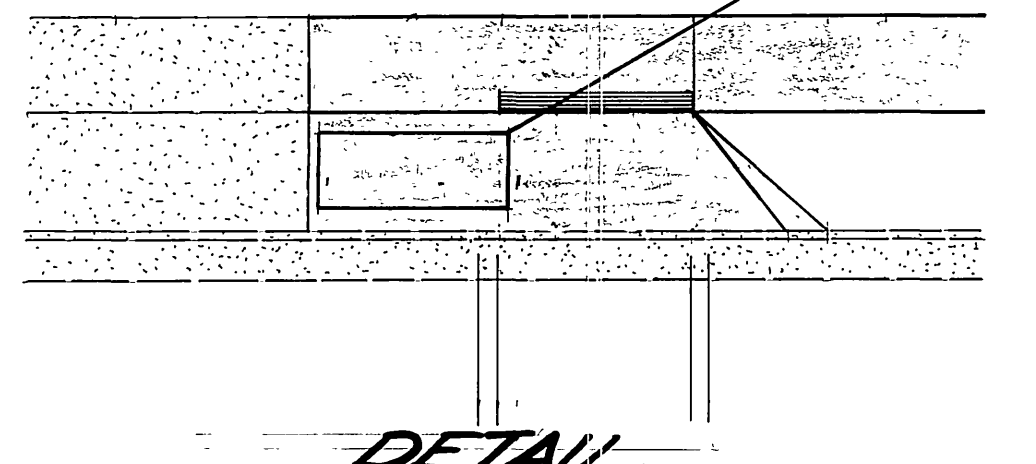
CHANNELS	LOOP DESIGNATION	NUMBER OF LOOPS	FEATURES
1	1-W-5	1	●
2	2-W-5	3	●
1	1-W-2	2	■
2	2-W-2	4	*
1	BLANK		
2	1-E-6	2	■
1	2-E-6	4	*
2	BLANK		
1	1-N-4	3	▲
2	2-N-4	3	▲
1	1-S-B	1	▲
2	BLANK		

**Detector Notes and Legend**

- Detectors shall be 2-channel rack-mounted.
  - See Special Provisions for details and other features.
  - Detector timing features shall be accomplished thru the internal logic of the controller unit.
  - Detector loops with special features shall also detect for normal operation.
- Sampling
  - Call-Hold (Extension)
  - ▲ Delay
  - \* Detector Disconnect (See Special Provisions)



DETAIL OF FIVE SECTION HEAD AT LOCATIONS (A) AND (E)



DETAIL DRIVEWAY APPROACH/WHEELCHAIR RAMP SCALE: 1"=10'

ENGINEER IN RESPONSIBLE CHARGE  
BARRY BECK  
R.C.E. No. 20900 expires 9/30/93  
DATE 4/13/90

DESIGNED BY MAR. DRAWN BY JMC. CHECKED BY JMC.

CITY OF RIVERSIDE PUBLIC WORKS DEPARTMENT  
APPROVED BY: [Signature]  
DATE: 4/13/90

CONTRACT TE-90-3  
TRAFFIC SIGNALS  
Arlington Avenue at Hillside Avenue  
X-453  
SHEET 1 OF 1  
HORIZ. SCALE: 1" = 20' VERT. SCALE: 1" = 10'